



01735390

103-10383

# EnCana OIL & GAS (USA) INC.

## ADDENDUM TO LEGAL PLAT FOR

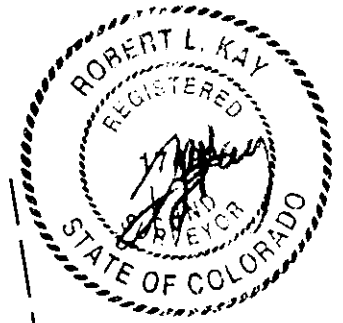
SDC #7344

SECTION 12, T4S, R102W, 6th P.M.

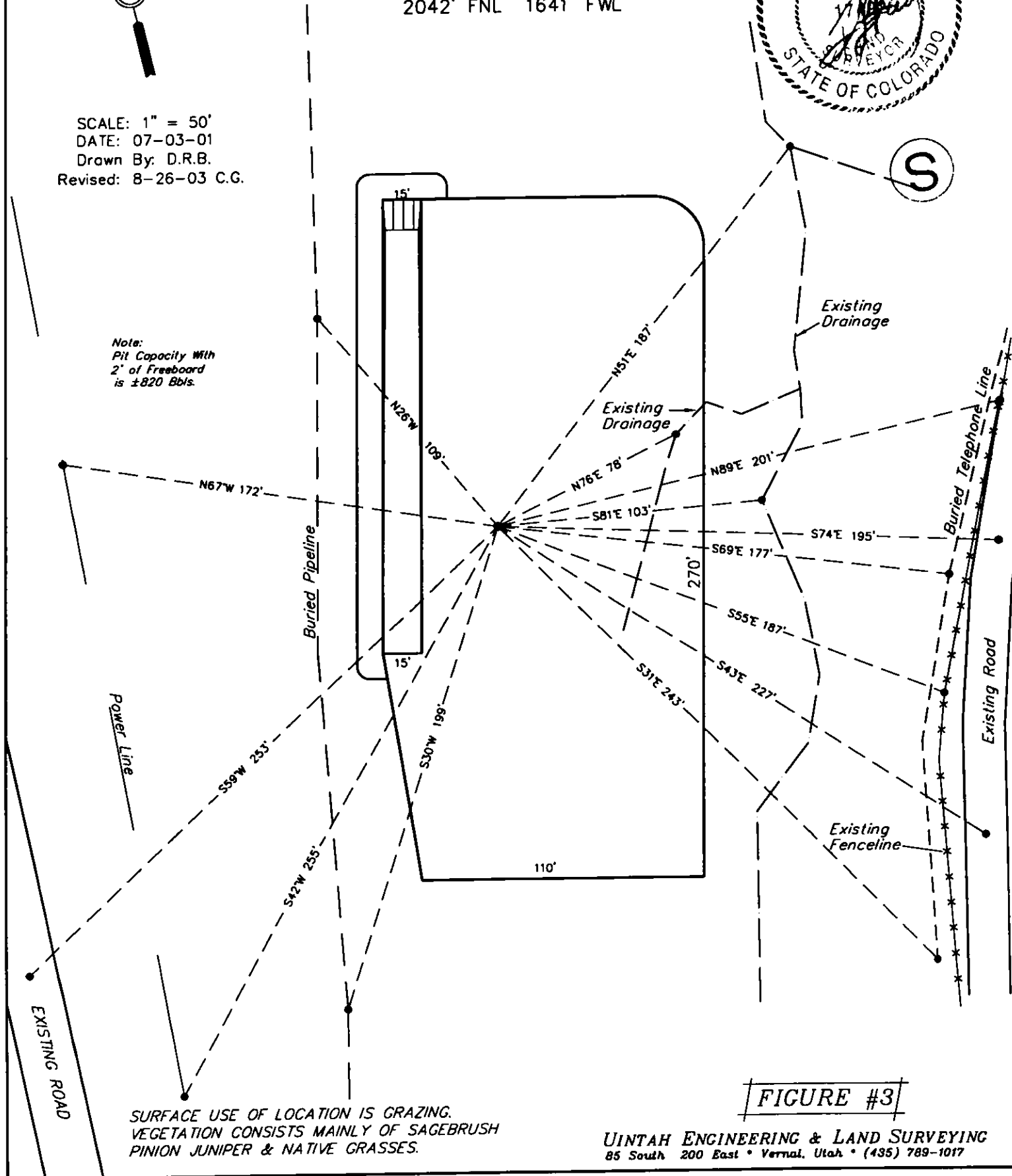
2042' FNL 1641' FWL



SCALE: 1" = 50'  
DATE: 07-03-01  
Drawn By: D.R.B.  
Revised: 8-26-03 C.G.



Note:  
Pit Capacity With  
2' of Freeboard  
is ±820 Bbls.



SURFACE USE OF LOCATION IS GRAZING.  
VEGETATION CONSISTS MAINLY OF SAGEBRUSH  
PINION JUNIPER & NATIVE GRASSES.

FIGURE #3