

**BLED SOE 9-33-5-44**

QC MJH

API # 125-09700 Loc. # 337021

FIELD NAME BALLYNEAL - #1970

Spud Date 12/11/2005

Basin DENVER - JULESBURG

Location NESE 33 5N 44W 6

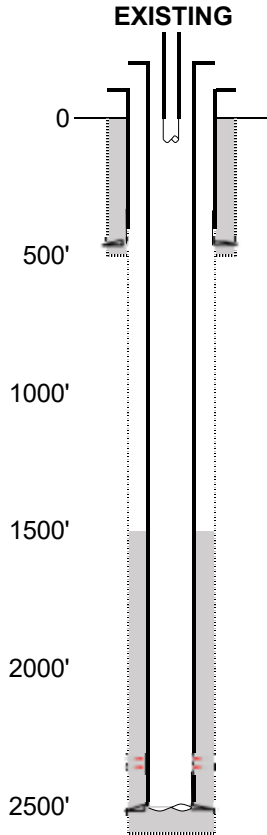
Elevation GL (ft) 3728

Elevation KB (ft) 3733

TD (ft) 2530

PBTD (ft) 2465

Formation Tops



Existing Casing and Cement Coverage

SURF: Size: 7", Hole Size: 9.875 in.  
Depth: 476 ft., Weight: UNK  
Cement: 185 sx, Top: 0 ft., Method: Vis

Deepest DWR w/in 1 mi. = 380'

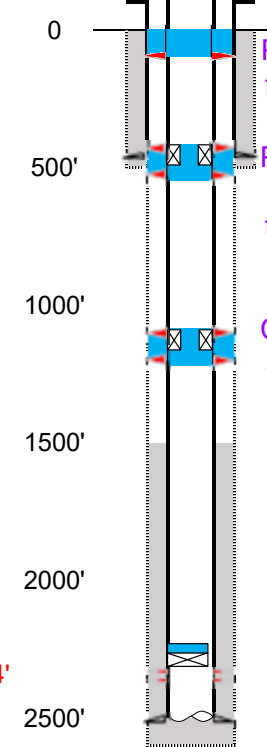
1ST, Size: 4.5", Hole Size: 6.25"  
Depth: 2507', Weight: UNK  
Cement: 75 sx, TOC: 1530', Method: CBL

tubing UNK  
TOC = 1530' (CBL)  
NBRR Perfs 2324' - 2369'  
PBTD (ft) 2465'  
TD (ft) 2530'

NIOBRARA - 2324'

**PROPOSED**

Depth Plug Placement



Perf at 100', pump 20 sx through perfs. Leave 10 sx inside to surface.

Perf at 526' & 426' CICR @ 476', pump 40 sx through perfs. Leave 10 sx on top.

Perf at 1200' & 1100' CICR @ 1150', pump 40 sx through perfs. Leave 10 sx on top.

CBL Required

VERIFY TOC w/ CBL

Pressure test casing after setting CIBP.

CIBP w/ 2 sx @ 2249' (75' above top perf).

NIOBRARA - 2324'