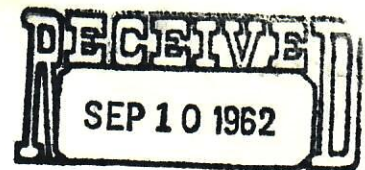
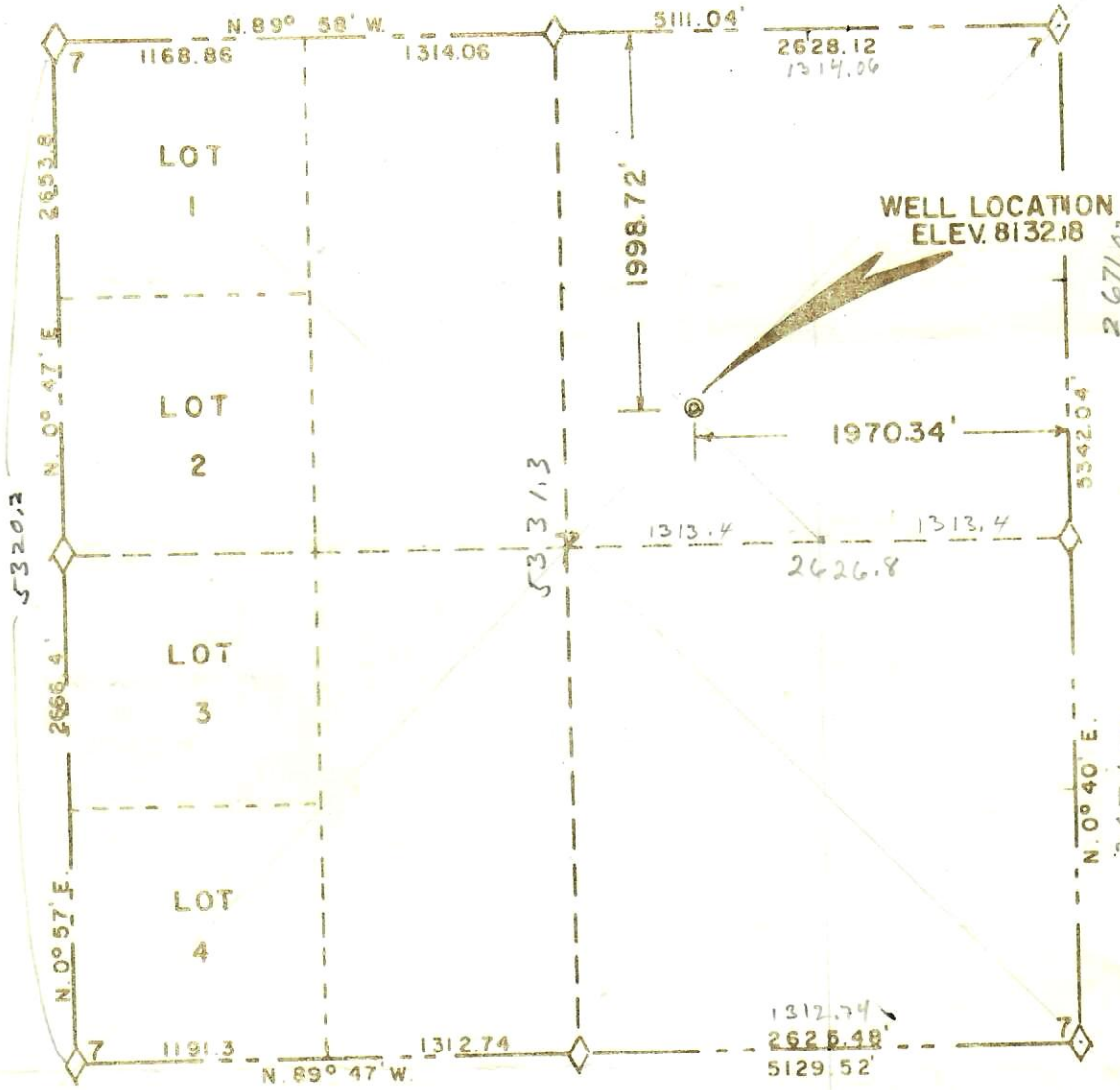


WELL LOCATION
 CTR. S.W. 1/4 NE. 1/4 SECTION 7,
 T. 9N., R. 80W. 6th. PM.



OIL & GAS
 CONSERVATION COMMISSION



SCALE 1"=1000'

R.P. 200'	Ft. South.	Elev. 8131.1
R.P. 200'	Ft. North.	Elev. 8133.5
R.P. 200'	Ft. East	Elev. 8129.9
R.P. 200'	Ft. West	Elev. 8135.4



NOTE:- Elevation run from U.S.G.S. datum.

Richard J. Mandeville do hereby certify that this map was plotted from notes of a field survey made under my supervision on November 16, 1961.

Richard J. Mandeville
 Registered Engineer & Land Surveyor C.J.B.

WESTERN ENGINEERS
 WELL LOCATION
 TEXACO INC.
 GOVT. LANMAN A-NO.1
 JACKSON COUNTY, COLORADO
 SURVEYED *C.J.B.*
 DRAWN *C.J.B.*
 Grand Junction, Colo 11-21-61

2666.4
 2653.8
 5320.2