

Inspection/Audit Photos

Location: GRAND VALLEY RESOURCES INC ANDERSON #17-4 PAD

Location ID: 315470

Date: 02/5/2026



Photo # 1669 Entrance to location



Photo # 1686 Operator Emergency Contact Number is not in service

Inspection/Audit Photos

Location: GRAND VALLEY RESOURCES INC ANDERSON #17-4 PAD

Location ID: 315470

Date: 02/5/2026



Photo # 1670 Location



Photo # 1671 Location

Inspection/Audit Photos

Location: GRAND VALLEY RESOURCES INC ANDERSON #17-4 PAD

Location ID: 315470

Date: 02/5/2026



Photo # 1673 Location



Photo # 1685 Location

Inspection/Audit Photos

Location: GRAND VALLEY RESOURCES INC ANDERSON #17-4 PAD

Location ID: 315470

Date: 02/5/2026



Photo # 1716 NE corner of location



Photo # 1717 SE corner of location

Inspection/Audit Photos

Location: GRAND VALLEY RESOURCES INC ANDERSON #17-4 PAD

Location ID: 315470

Date: 02/5/2026



Photo # 1718 SW corner of location



Photo # 1719 NW corner of location

Inspection/Audit Photos

Location: GRAND VALLEY RESOURCES INC ANDERSON #17-4 PAD

Location ID: 315470

Date: 02/5/2026



Photo # 1676 Bradenhead is inaccessible



Photo # 1692 Open ended piping/wildlife hazard/available for entry by wildlife

Inspection/Audit Photos

Location: GRAND VALLEY RESOURCES INC ANDERSON #17-4 PAD

Location ID: 315470

Date: 02/5/2026



Photo # 1694 Staining on location near production tank unload line

Photo # 1696 Staining on location near production tank unload line

Inspection/Audit Photos

Location: GRAND VALLEY RESOURCES INC ANDERSON #17-4 PAD

Location ID: 315470

Date: 02/5/2026



Photo # 1697 Small amount of Weeds/undesirable plant species in secondary containment presents a potential fire hazard



Photo # 1700 Small amount of Weeds/undesirable plant species in secondary containment presents a potential fire hazard

Inspection/Audit Photos

Location: GRAND VALLEY RESOURCES INC ANDERSON #17-4 PAD

Location ID: 315470

Date: 02/5/2026



Photo # 1704 Small amount of Weeds/undesirable plant species near pump jack presents a potential fire hazard



Photo # 1709 Debris

Inspection/Audit Photos

Location: GRAND VALLEY RESOURCES INC ANDERSON #17-4 PAD

Location ID: 315470

Date: 02/5/2026



Photo # 1711 Debris



Photo # 1712 Debris

Inspection/Audit Photos

Location: GRAND VALLEY RESOURCES INC ANDERSON #17-4 PAD

Location ID: 315470

Date: 02/5/2026



Photo # 1713 Debris

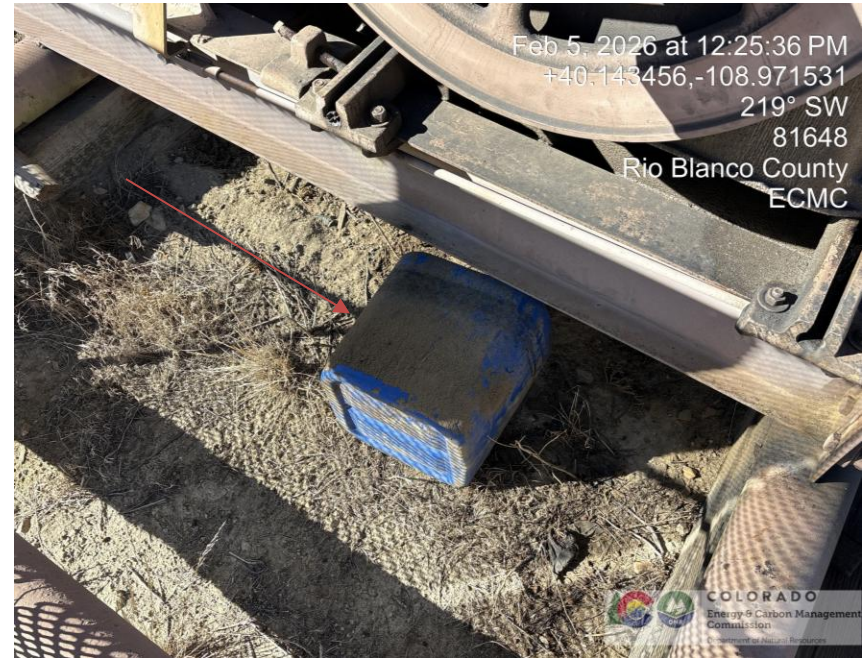


Photo # 1714 Debris

Inspection/Audit Photos

Location: GRAND VALLEY RESOURCES INC ANDERSON #17-4 PAD

Location ID: 315470

Date: 02/5/2026



Photo # 1715 Debris



Photo # 1726 Unmarked deadman

Inspection/Audit Photos

Location: GRAND VALLEY RESOURCES INC ANDERSON #17-4 PAD

Location ID: 315470

Date: 02/5/2026



Photo # 1727 Unmarked deadman



Photo # 1728 Unmarked deadman

Inspection/Audit Photos

Location: GRAND VALLEY RESOURCES INC ANDERSON #17-4 PAD

Location ID: 315470

Date: 02/5/2026

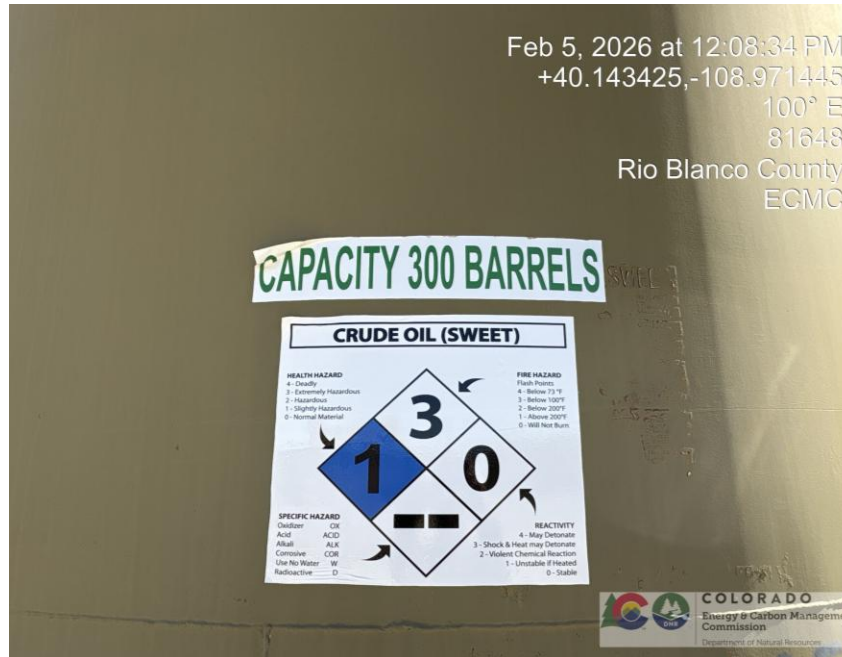


Photo # 1687 Production tank label lacks operator name & contact number