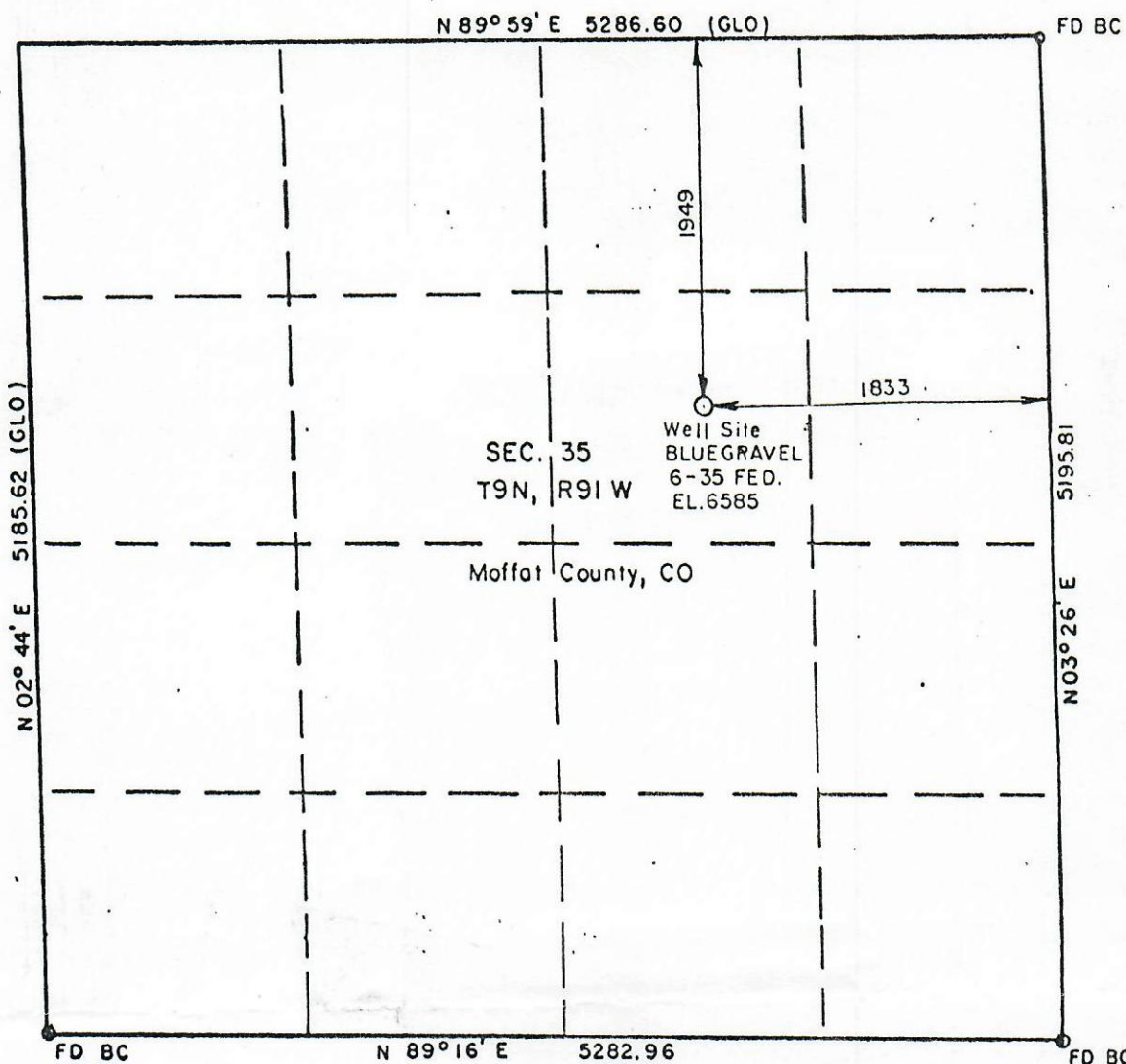




00257849

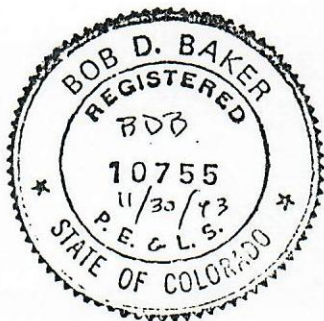


1" = 1000'

Elevation based on USGS Quad Map  
 No Improvements within 200'  
 Surface Use is Rangeland  
 Operator : GRYNBERG PETROLEUM CO.

SURVEYOR'S CERTIFICATE

I, Bob D. Baker, a duly registered Land Surveyor in the State of Colorado, do hereby certify that the survey represented by this plat was done by me and that said plat is correct to the best of my knowledge and belief.



By Bob D. Baker  
 BOB D. BAKER, PE-PLS  
 Colorado Reg. No. 10755

Date November 30, 1993

RECEIVED  
 NOV 30 1993  
 11/29/93