

# ROCKY MOUNTAIN GEO-ENGINEERING CO.

WELL SITE GEOLOGY — MUD LOGGING

2450 INDUSTRIAL BLVD.

PHONE 243-3044

GRAND JUNCTION, COLORADO 81501

COMPANY *DEVON CORPORATION* LOCATION *W 1/2 SE 1/4 SEC 4, T9N-R92W*  
 WELL # *1-4 FEDERAL* COUNTY *MOFFAT*  
 FIELD *HOUSEL GULCH* STATE *COLORADO*  
 ELEVATION *GL 6950 KB 6962 (EST)* DRILLING FLUID *WATER*

FROM TO  
 DEPTH LOGGED *550*  
 DATE LOGGED *4 DEC 80*

ENGINEERS *L. AMOROSO GEOLOGIST*  
*L. HINDERGARD*

	SHALE		DOLOMITE		COAL		TRACE		CORE NO.	NB - NEW BIT NR - NO RETURNS CO - CIRCULATE OUT NS - NO SAMPLE TG - TRIP GAS DTG - DOWN TIME GAS
	SANDSTONE		CHERT		ANHY-GYP		FAIR		DST NO.	
	LIMESTONE		SALT		SILTSTONE		GOOD		DEVIATION	
	00261164									

DRILLING RATE, IN MIN./FT. 5'	LITHOLOGY	OIL SHOW	CHROMATOGRAPH HYDROCARBONS IN PPM				REMARKS													
			T	F	G	M=1000 PPM	WT	VIS	WL	PH	CKE									
5 10 15 20			TOTAL GAS	METHANE	ETHANE	BUTANE	PROPANE	PENTANE												
			5	10	25	50	100	200	400											
			1 SM	1M	2M	5M														
<i>4 DEC 80</i>																				<i>Rigged up &amp; Ready to Log @ 9:00 AM 2 DEC 80</i>
<i>NO DRILLING PARAMETERS RECORDED</i>																				<i>DRILL STARTED 11:30 AM 4 DEC 80</i>
																				<i>SH GY-GYBAN SLTY OCL MICA BENT</i>
																				<i>SS CLR SM WH CG-MG RND-SBANG PRED WSRT UN CONS - SL CONS</i>
																				<i>SH AA</i>
																				<i>SS CLR-SMKY MG SM CG SBAND ANG PRED WSRT SH GY-GYBAN SLTY SM MICA CARB STR &amp; INCL</i>

WELL NAME: DEVON #1-4 FEDERAL

DRILLING RATE, IN MIN./FT. S'	LITHOLOGY		OIL SHOW T F G	CHROMATOGRAPH HYDROCARBONS IN PPM				REMARKS						
	INTER- PRETIVE	DEPTH		PERCENT- AGE	TOTAL GAS	METHANE	ETHANE PROPANE	BUTANE PENTANE	M=1000 PPM	WT	VIS	WL	PH	CKE
5 0 5 20		0-1/4 700			NO GAS									SS AA SM CHT FRAGS SHAA SM GRD TO YEL BEN SLTST MICA TR BIOT, VOLC PTLS
		50												SLTST YELBRN SM SDY ARG ABUN BIOT, MICA, VOLC PTLS
		800												SS AA SS CLR-WH CG SM MG, SBRND-ANG M-MSLT UNCONS SM CHT FRAGS
		50												SS AA SH GY-CYAN SLTY SM MICA OCC BENT
		900												SS WH-CLR MG-CG SBRND- ANG MSLT UNCONS CHT FRAG SM PYR CLUS
		50												SH AA SM YEL-BRN SLTY
		1000												SS AA SH GYCN - YELBRN-REDBRN SM SLTY SM BENT
		50												SLTST YELBRN ARG SFT SS CLR-SMKY-PK CG SM MG, SBRNG-ANG MSLT UNCONS SA CHT FRAGS PYR INCL

GEOLOGICAL  
NOT WORKING

WELL NAME:

DRILLING RATE IN MIN./FT. S'				LITHOLOGY		OIL SHOW		CHROMATOGRAPH HYDROCARBONS IN PPM				REMARKS							
5	0	5	10	INTER- PRETIVE	DEPTH	PERCENT- AGE	T F G	TOTAL GAS	METHANE	ETHANE	PROPANE	BUTANE	PENTANE	WT	VIS	WL	PH	CKE	
																			SS CLR - SMKY CG - FG
																			SBANG - ANG MSRT
																			SH GY - GYGN BLKY SFT,
					1100														SH BRN - REDBRN - YELGN
																			SLTY SM BENT
																			SSAA
					1150														SSWH - SMKY FG - MG
																			SBAND - SBANG WSRT
																			UNCONS
					1200			NO GAS											
																			SSAA MG - CG
																			SSWH - SMKY - PK CG - MG
					1250														SBAND - SBANG UNCONS MSRT
					1300														SS CLR CG - MG MSRT
																			UNCONS CARB INCL TR PYR
																			SH GYGN - YELBRN - REDBRN
																			SFT BLKY
																			SS CL MG MSRT
					1350														UNCONS SM COAL SM MICA
																			SS AA INC SH
																			SH GYGN - GYBRN - YELBRN - BRNRD
					1400														SFT SL CALC

● INST CK

NO GAS



WELL NAME:

DRILLING RATE IN MIN./FT. 5'				LITHOLOGY		OIL SHOW T F G	CHROMATOGRAPH HYDROCARBONS IN PPM				REMARKS								
				INTER- PRETIVE	DEPTH		PERCENT- AGE	TOTAL GAS — METHANE — — —		ETHANE — — — PROPANE — — —	M=1000 PPM BUTANE — — — PENTANE ·····		WT	VIS	WL	PH	CKE		
					1800														
				NS		NS													SHAKER BYPASS NO SAMPLE
					50														
																			SS CLR - smky MG-CG SBRND - SBANG MSRT UNCONS SM GLAUC SH LT-MAY-YELGN-MRN SLTY SM CARB INCL PL PTGS FOSS FRAGS OLG PYR INCL
					1900														
																			TR C 1
					50														SS AA
					2000														SS WH-CLR CG-MG SBRND SBANG MSRT SM OVGTH UNCONS SH CY-CYBRN SM VGT SLTY CARB INCL SM PL PTGS SM MICA
					50														SH AA SM -> ABN VGT TRM
					2100														
																			SS WH-CLR CG-MG SBRND- SBANG MSRT UNCONS
					50														

WELL NAME:

DRILLING RATE IN MIN./FT. 5		LITHOLOGY		OIL SHOW	CHROMATOGRAPH HYDROCARBONS IN PPM					REMARKS									
		INTER- PRETIVE	DEPTH	PERCENT- AGE	T F G	TOTAL GAS — METHANE — — —				ETHANE — — —	BUTANE — — —	PROPANE — — —	PENTANE — — —	WT	VIS	WL	PH	CKE	
5	10					5	10	25	50	100	200	400							
			0-0				5m	1m	2m	5m									SS AA
			2200								100 GAS								SH MGY-GYBRN-GYCN SLTY SM SDY ARG SFT-FRM
																			SS CLR-SMKY FG-MG SM CG ANG-SBRND PSRT UNCONS
			50																
			2300																SH M-DKGY-REDBRN SLTY BLKY SFT-FRM
			50																SS CLR-SMKY CG-FG SBRND-SBANG PSRT
			2400																SH GN-GY-MRN SLTY COAL PTGS
			50																SS CLR-SMKY MG-FG SBRND-SBANG MSRT UNCONS CHT FRAGS
			50																SSAA SM SMKY-ROSE SM CG
			2500																SH AA SM VGT CARB INCL
			50																SS CLR SM PK SBRND-ANG MSRT UNCONS
																			SH GYCN-YELBRN-GYBRN SLTY IP SM BENT SM CARB INCL ALL PYR CLS

BIT #2 MADE  
 1978 1 IN 2 3 HRS  
 6 DEC 87  
 NB STEEL  
 RPM 800  
 WDG 20/35M  
 PP 1000  
 SP 112



WELL NAME:

DRILLING RATE IN MIN./FT. 5'		LITHOLOGY		OIL SHOW		CHROMATOGRAPH HYDROCARBONS IN PPM				REMARKS							
MIN./FT. 5'		INTERPRETIVE	DEPTH	PERCENTAGE	T F G	TOTAL GAS	METHANE	ETHANE	BUTANE	PROPANE	PENTANE	WT	VIS	WL	PH	CKE	
						5	10	25	50	100	200	400					
6 0 15 20																	SS AA INCR MA SM Fe STN
			50				CG										SH GY-DKGY BRN SM VGT SLTY MEM
							CG										SS CLR MA-FG SBAND - SBAND MSRT UNCONS OCC CHT PTGS
			3000				CG										SLTST GY-GYAN - BRN ARG SFT
							CG										SS CLR - SMKY MA-FG OCC SBAND - ARG M-PSRT UNCONS SM CHT FRAGS
			50				CG										SH GY-VGT SLTY BLKY IP SM BENT
-7-18 FCYD							CG	TG									STUCK - FISHING - Rig Repair
																	100 CPM CORRELIDE 43 MIN LAG
			3100					CG									SS CLR - MKY VCG - CG SBAND - SBAND MSRT UNCONS SM GY FG - CG DIRTY SM CHT
																	COAL STRG BIT FRM SLTST GYBRN - GY SM SDY ARG GLAUC INCL
			50					CG									SH GY - DKGY - GYAN VSLTY SM CARB INCL SM GRDG TO SLTST
																	SS AA SM FG - VFG GN - WH ARG SM CARB INCL SM CHT FRAGS
			3200														SS CLR - MKY - ROSE VCG - ARG SMVFG ARG IP PSRT
																	SH GY - GYAN - GN SLTY OCC SDY MICA STR COAL SB BIT
			50														9.1 36 8.8 9 2/32
																	SH GY - GYAN - GN SLSTN OCC CHT FRAG RD - TR CLR SS CG
			3300														8.9 35 9.5 9 2/32

RPM 80  
WOB 35/400  
PP 200  
SPM 10

19 DEC NOT WORKING  
RPM 60  
WOB 35/40  
PP 200  
SPM 10

WELL NAME:

DRILLING RATE, IN MIN./FT. S		LITHOLOGY		OIL SHOW	CHROMATOGRAPH HYDROCARBONS IN PPM					REMARKS									
		INTERPRETIVE	DEPTH		PERCENTAGE	T	F	G	TOTAL GAS	METHANE	ETHANE	BUTANE	PROPANE	PENTANE	WT	VIS	WL	PH	CKE
5	10	15	20																
6 EOLC GRAPH NOT LOGGING			3300						150	10	25	50	100	200	400				
									1.5M	1M	2M	4M							
			50																
			3400																
			50																
			3500																
			0-3/4																
			50																
			3600																
			50																

20 DEC  
RPH 60  
WOB 30/45M  
PP 2100  
SPM 111

(FT UNION)

CG

SH GY-GN OCC SLTSM CLR SS - BRN SS CONS, ANG-SUBRND  
SH GY-GN, OCC SLTSM, TR CLR SS - BRN SS CONS, ANG-SUBRND, SOME - CHT FRAGS BRN  
AA with less CHT FRAGS  
SH GY-GN, OCC SLTSM, TR CLR SS - ANG-SUBRND, BRN SS  
SS CLR-MKY VCG - CG ANG - SBAND MSRT UNCONS SM BIT COAL INCL  
SLTST MGY - GYBRN ARG SM SDY SM CARB/COAL INCL  
SH GY SM SLTY OCC PYR INCL  
SS SM CLR-MKY VCG - MK SBAND-RND SM WH-GY VFC WSRT VSLTY ARG SM GLAUC INCL  
SS SM CLR-MKY CG-MG SBAND-RND SM WH-GY VSLTY SH GLAUC & PYR incl OCC  
SS SM CLR CG-MG SUBRND LRGBOAL INCL  
COAL SM SB BIT PRED BIT SM PYR INCL  
SH GY-GYBRN SM SMTH SPLTY CARB/COAL INCL SM PL PTGS  
COAL LIG-SB BIT SM CARBS H  
SLTST GY-GYBRN ARG CARB INCL  
SH GY-DKGY-GYGN SM SLTY PRED SMTH BLKY CARB INCL  
SS WH-LTGY FA SM VFC SBAND-SBAND M-WSRT ABUN CARB INCL MIA FLKS SM ARG DIRTY  
9.0 38 9.0 9.0 3/32  
SLTST GY-GN - GYBRN ARG SHY SM SDY CARB INCL  
SH GY-GYGN PRED SMTH SM SLTY  
SLTST AA



WELL NAME: DEVON #1-4 FEDERAL

DRILLING RATE IN MIN./FT.	LITHOLOGY		OIL SHOW T F G	CHROMATOGRAPH HYDROCARBONS IN PPM						REMARKS							
	INTER- PRETIVE	DEPTH		PERCENT- AGE	TOTAL GAS — METHANE — — —		ETHANE — — —	BUTANE — — —	WT	VIS	WL	PH	CKE				
					PROPANE — — —	PENTANE — — —	M=1000 PPM										
0 10 20 RPM 60 VOB 35/40m PP 2100 SPM 110		50		11	24	44	84	100	200	400							SLTST GY-GYGN ARG GROS TO VFG SS WH WSRT FG COAL BLK BRIT SH SMTH GY SLTY BLKY SS WH WSRT MG OCC COAL STR SH SMTH GY BLKY SLTY SS WH WSRT CG-MG SH AA SS CLR-WH MG-FG WSRT SH BLK SM BLKY SS CLR-WH-MG MG-FG WSRT SAND - CLR-MKY - MG-FG WSRT-UNCONS SH - GY-BLK-SM-BLKY SAND - CLR-MKY - FG-WSRT-WROD- SH - GY-BLK - SM - BLKY SAND AA OCC PYR INCL - UNCONS SS WH - GY WSRT FG SH GY-BLK SM
		100															SHALE SHAKER DOWN - NO SAMPLES AVAILABLE S.9 40 8 10 2/32
		200															
		300															
		400															
		500															
		600															
		700															
		800															
		900															
		1000															
		1100															
		1200															
		1300															
		1400															
		1500															
		1600															
		1700															
		1800															
		1900															
		2000															
		2100															
		2200															
		2300															
		2400															
		2500															
		2600															
		2700															
		2800															
		2900															
		3000															
		3100															
		3200															
		3300															
		3400															
		3500															
		3600															
		3700															
		3800															
		3900															
		4000															
		4100															
		4200															
		4300															
		4400															
		4500															
		4600															
		4700															
		4800															
		4900															
		5000															
		5100															
		5200															
		5300															
		5400															
		5500															
		5600															
		5700															
		5800															
		5900															
		6000															
		6100															
		6200															
		6300															
		6400															
		6500															
		6600															
		6700															
		6800															
		6900															
		7000															
		7100															
		7200															
		7300															
		7400															
		7500															
		7600															
		7700															
		7800															
		7900															
		8000															
		8100															
		8200															
		8300															
		8400															
		8500															
		8600															
		8700															
		8800															
		8900															
		9000															
		9100															
		9200															
		9300															
		9400															
		9500															
		9600															
		9700															
		9800															
		9900															
		10000															

SH GYBRN - GY SLTY BLKY  
SM CARB INCL SFT-FRM  
COAL BLK BIT BRN  
SS WH-CLR FG-CG SBRND  
M-PSRT SM UNCONS SM CALC CHST  
OCC GLAUC INCL



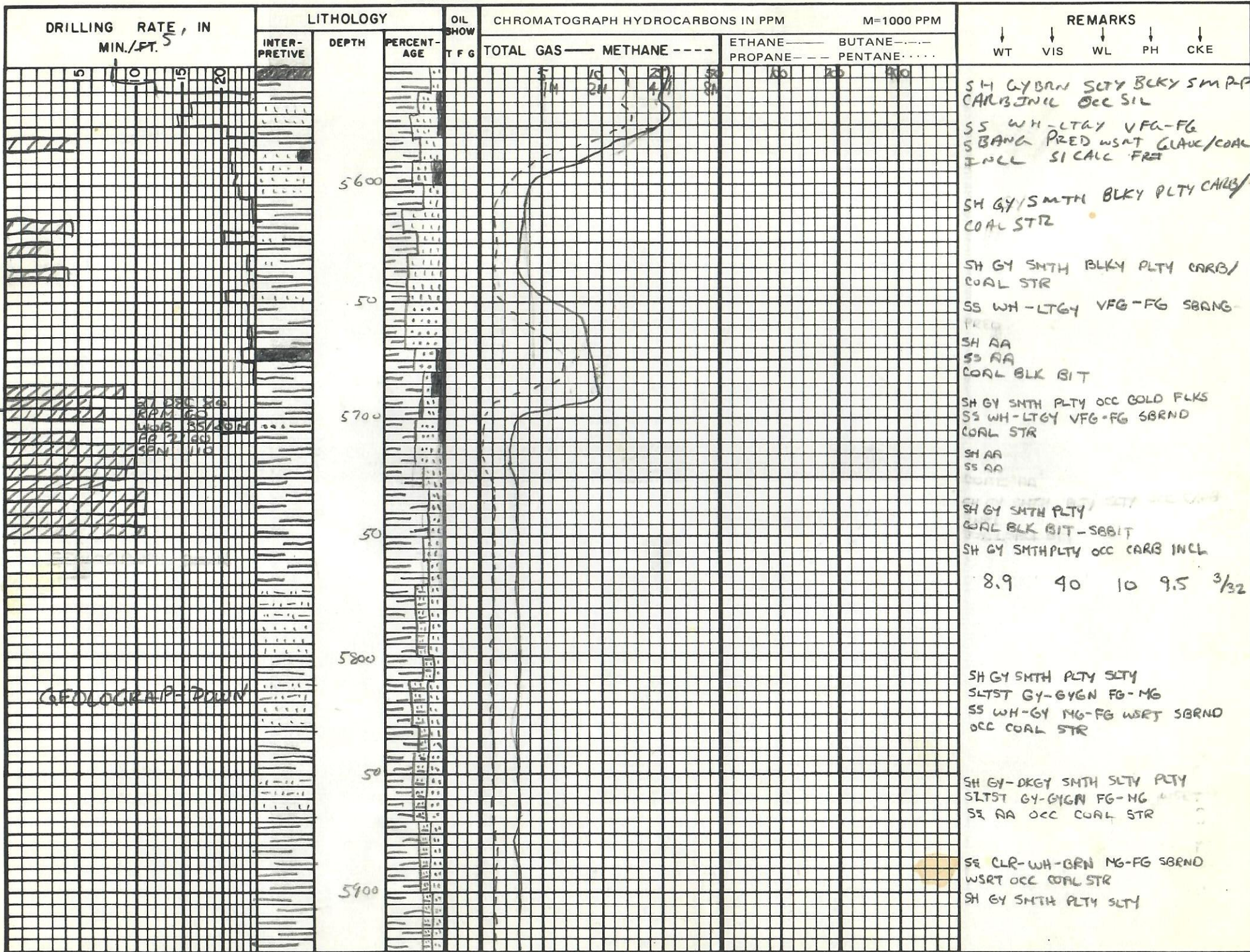
DRILLING RATE, IN MIN./FT. 5'	LITHOLOGY		OIL SHOW T F G	CHROMATOGRAPH HYDROCARBONS IN PPM M=1000 PPM					REMARKS						
	INTER- PRETIVE	DEPTH		PERCENT- AGE	TOTAL GAS	METHANE	ETHANE	BUTANE	PROPANE	PENTANE	WT	VIS	WL	PH	CKE
<p>29 DEC 80</p> <p>AP3 STC F-2</p> <p>RPM 58</p> <p>WHS 35/40M</p> <p>PP 2100</p> <p>SPM 110</p>		4800		5 (M)	10	25	50	100	200						<p>COAL BLK BIT</p> <p>SH GY PLY SLTY W/ CALC SMT</p> <p>SS CLR-WH MG-FG WSET WRND</p> <p>COAL BLK BIT</p> <p>8.9 35 10 9.5 3/32</p> <p>SH AA SM VGT SLTY</p>
<p>Power Down</p>		50													<p>COAL BLK BIT-SBBIT FRM- BRIT</p> <p>SS GY-WH VFG-FG Prod us R</p> <p>SM VSLTY ABUN GLAUC</p> <p>SH GY BRN-GY SLTY IP PL</p> <p>PTGS COAL STR</p> <p>COAL BLK BIT-SBBIT SM SHY</p>
		4900													<p>SS WH-GY FG OCC MA SBAND</p> <p>WSET GLAUC &amp; CARB INCL</p> <p>SH GY SMTH SM SLTY</p>
		50													SHAA
		5000													<p>COAL BLK BIT-SM BIT SM SHY</p> <p>SS WH-GY BRN FG-MG SBRND</p> <p>WSET OCC CARB. INCL</p> <p>SH GY SMTH BLKY SLTY</p> <p>COAL AA</p> <p>SS WH-GY FG-MG SBRND OCC</p> <p>GLAUC &amp; CARB INCL</p> <p>SH AA</p> <p>COAL BLK BRIT</p> <p>SS WH-BRN FG-MG SBRND</p> <p>SH GY SMTH PLY SLTY</p> <p>COAL BLK BRIT</p>
		50													<p>100 SM CARBIDE</p> <p>TR MIN AG</p> <p>CHR 43</p>
<p>25 DEC 80</p> <p>RPM 60</p> <p>WHS 32/40M</p> <p>PP 2150</p> <p>SPM 115</p>		5100													<p>SH AA</p> <p>SS AA OCC CARB INCL</p> <p>TR COAL</p> <p>SS CLR-WH MG-FG WRND OCC</p> <p>GLAUC INCL</p> <p>SH GY PLY SMTH</p> <p>COAL BLK BRIT</p> <p>SS WH-BRN MG SBRND OCC GLAUC &amp;</p> <p>CARB INCL</p> <p>SH GY SMTH SLTY</p> <p>COAL BLK SUBBIT</p>
		50													<p>SS AA</p> <p>SH AA</p> <p>COAL BLK BIT</p>

WELL NAME:

DRILLING RATE IN MIN./FT. 5	LITHOLOGY		OIL SHOW T F G	CHROMATOGRAPH HYDROCARBONS IN PPM					REMARKS					
	INTER- PRETIVE	DEPTH		PERCENT- AGE	TOTAL GAS — METHANE — — —		ETHANE — — —	BUTANE — — —	PROPANE — — —	PENTANE — — —	WT	VIS	WL	PH
5 0 5 20		75		10	25	50	100	200	400					
		5200												COAL BLK BIT BRIT-FRM
														SH AA SM TAN-BRN SMTH
														BLKY
														COAL AA
														SH GYBRN SLTY COAL INCL
		50												COAL BLK BIT
														SS WH-GY VFG-FG SBRND-
														SBRNG WSRT SLTY ARG IP
														CALL CNT GLAK INCL
														SH GY-LYBRN SLTY IP CARB
		5300												COAL INCL
														SH GY SMTH SM SLTY CARB
														INCL
		50												SS WH-GY-BRN VFG-FG SBRND
														SH AA
														COAL BLK BIT
														SS AA
														SH GY SMTH SLTY CARB INCL
														SS AA OCC COAL STR
														SH AA
		5400												SH GY-BLK SMTH SLTY CARB INCL
														SS WH-GY-BRN VFG-FG SBRNG-
														SBRND WSRT
														COAL BLK BIT
														SH GY-BLK BLKY SLTY OCC CARB INCL
														SS GY-FG WSRT WRND
		50												COAL BLK BIT
														SH AA
														COAL BLK BIT
														8.8 39 9 9.5 3/32
		5500												COAL BLK -BRN BLK SBRND-BIT
														SH GY SMTH SLTY OCC CARB INCL
														SH AA SM CARB STR

LOG ON CASE NO.  
75 min LOG  
CHRE-60

WELL NAME:



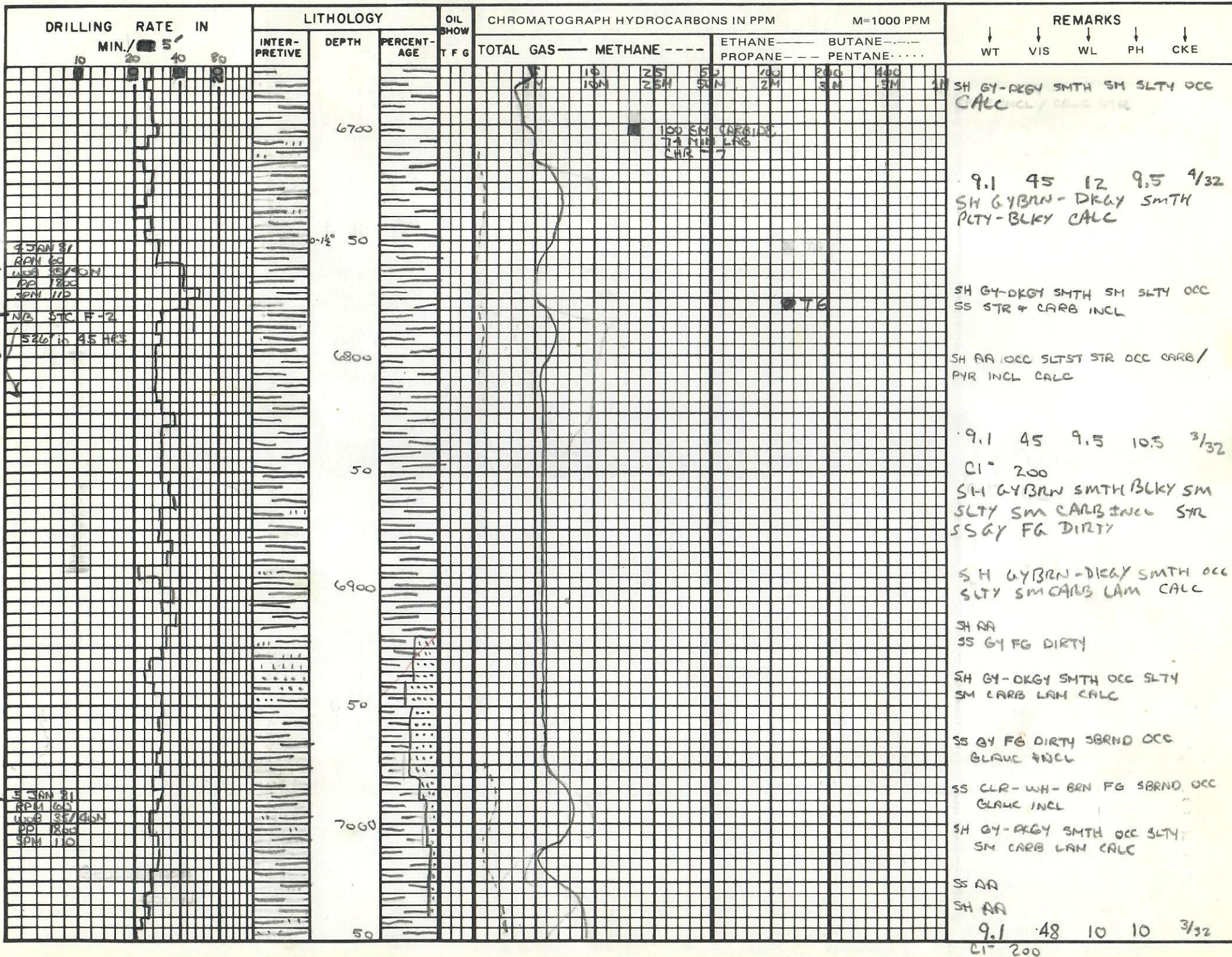
GEOLOGRAPH=DOWN

21 DSC 24  
KAM 25  
LWB 25/26  
FG 21/22  
SEN 115

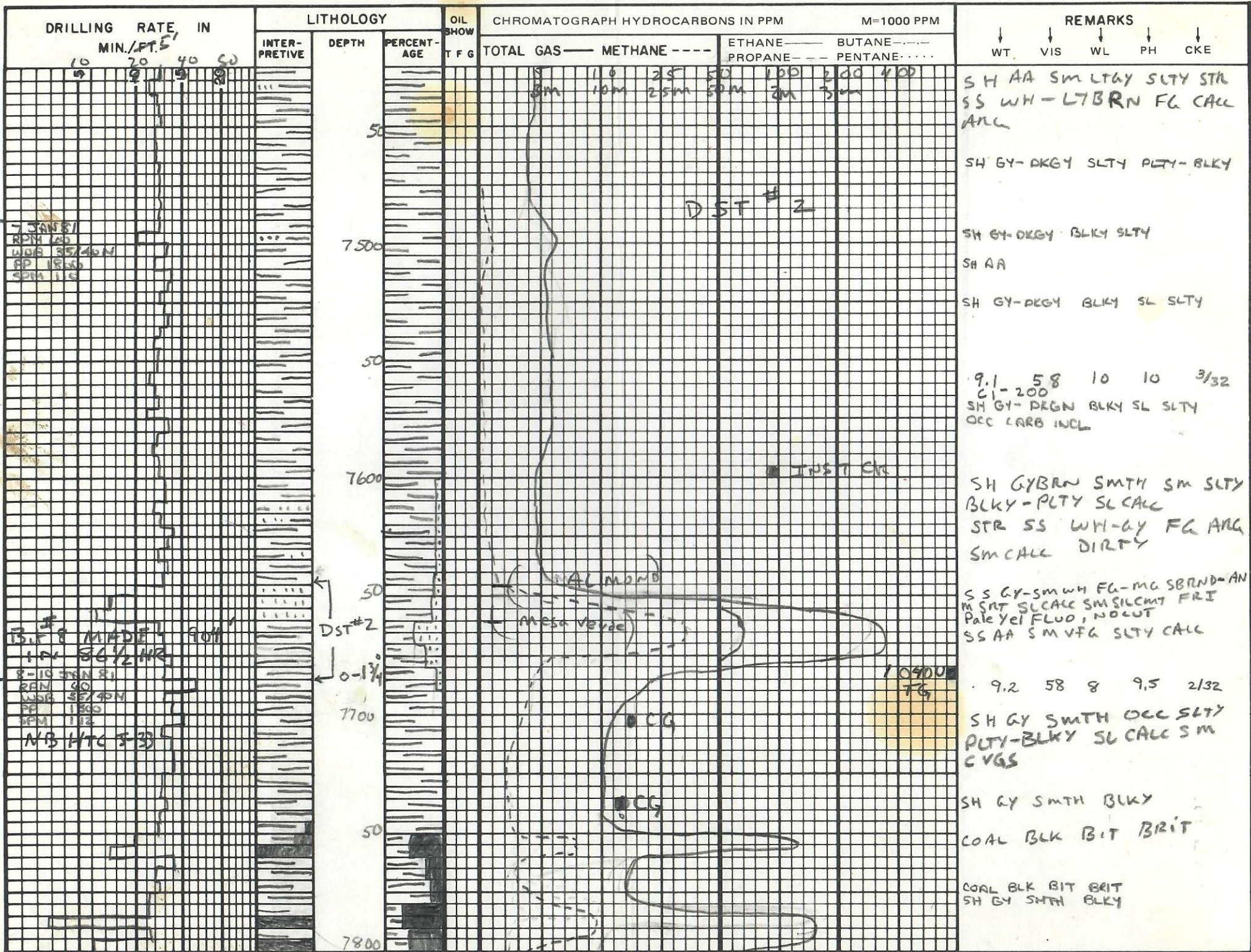




WELL NAME:



WELL NAME:



7 JAN 81  
RPM 120  
LOG 35/40M  
PP 18/20  
SPM 112

B.F. MADE 90H  
1-1/2 SC 1/2 HR  
8-10 3/4 N 81  
RAN 40  
LOG 35/40M  
PP 18/20  
SPM 112  
NB HTC 33

ALMOMB  
Ares Verde

DST #2  
0-1 3/4

10900  
FG

DST # 2

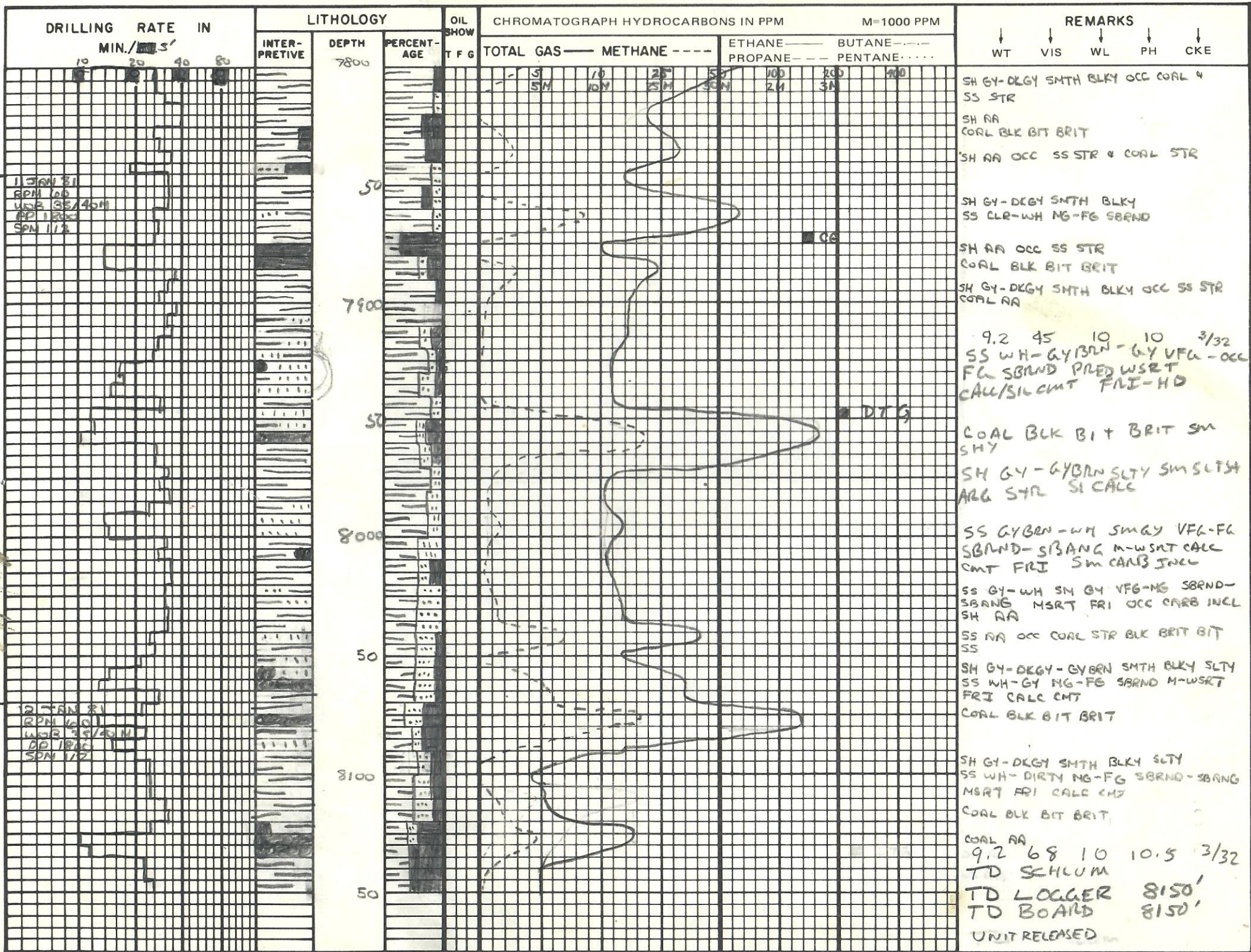
DST CR

CG

CG



WELL NAME:



11 JAN 81  
RPM 100  
LOG 35/45M  
DP 1800  
SPM 112

12 JAN 81  
RPM 100  
LOG 35/45M  
DP 1800  
SPM 112

9.2 45 10 10 3/32  
SS WH-GY/BRN-GY VFG-occ  
FL SBAND PRED WSRT  
CAL/SILCMT FRI-HD

DTG

COAL BLK BIT BRIT SM  
SHY  
SH GY-GY/BRN SLTY SM SLTY  
ARG STR SILCALC

SS GY/BRN-WH SM GY VFG-FG  
SBAND-SBANG M-WSRT CALC  
CMT FRI SM CARB INCL

SS GY-WH SM GY VFG-MG SBAND-  
SBANG MSRT FRI OCC CARB INCL  
SH RA

SS RA OCC COAL STR BLK BRIT BIT  
SS

SH GY-DKGY-GY/BRN SMTH BLKY SLTY  
SS WH-GY NG-FG SBAND M-WSRT  
FRI CALC CMT  
COAL BLK BIT BRIT

SH GY-DKGY SMTH BLKY SLTY  
SS WH-DIRTY NG-FG SBAND-SBANG  
MSRT FRI CALC CMT  
COAL BLK BIT BRIT

COAL RA  
9.2 68 10 10.5 3/32  
TD SCHLUM  
TD LOGGER 8150'  
TD BOARD 8150'  
UNIT RELEASED

RECEIVED  
OCT 27 1980

COLO. OIL & GAS CONS. COMM.



# MSM CONSULTANTS INC.

ENGINEERING • ARCHITECTURE • SURVEYING • PLANNING  
570 West 44th Avenue • Denver Colorado 80216 • (303) 455-7321

DRAWN BY

**NG**

DESIGNED BY

CHECKED BY  
**LAH**

APPROVED BY

**LFH**

## DEVON CORPORATION

**HOUSEL GULCH FEDERAL NO. 1-4**  
SW, SE, Section 4, T9N, R 92W  
6th P.M., Moffat County, Colorado

FILE NO

**74195**

SCALE

**1" = 3.95 mi**

DATE

**7/31/80**

SHEET NO.

**1 of 1**



# Resource Marketing Services Inc.

821 17th Street, Denver, Colorado 80202 • (303) 892-9185

October 24, 1980

Oil & Gas Conservation Commission  
1313 Sherman Street, Room 721  
Denver, CO 80203

Attn: Mr. Jules DeSalvo

Re: Application for Permit to Drill  
Devon Corporation

Dear Mr. DeSalvo:

Enclosed, please find a copies of the Application for Permit to Drill  
for Devon Corporation for the following locations:

Colorado

Federal # 229  
Sec. 29, T. 6S., R. 102W  
Garfield County, Colorado

Federal # 130  
Sec. 30, T. 6S, R. 102W  
Garfield County, Colorado

House Gulch # 1-4  
Sec. 4, T. 9N, R. 92W  
Moffat County, Colorado

Also enclosed is a check to cover the filing and service fees.  
Resource Marketing Services, Inc., is handling the filing of these  
wells. If you have any questions, please do not hesitate to call.

Very truly yours,

RESOURCE MARKETING SERVICES, INC.

Thomas deG. Graham

TdG/nw  
Encls.

DEPARTMENT OF THE INTERIOR  
GEOLOGICAL SURVEY

RECEIVED

NOV 19 1980

APPLICATION FOR PERMIT TO DRILL, DEEPEN, OR PLUG BACK

1a. TYPE OF WORK  
 DRILL  DEEPEN  COLO. OIL & GAS CONSV. COMM. PLUG BACK

b. TYPE OF WELL  
 OIL WELL  GAS WELL  OTHER  SINGLE ZONE  MULTIPLE ZONE

2. NAME OF OPERATOR  
 Devon Corporation

3. ADDRESS OF OPERATOR  
 Suite 400, Market Center, 1624 Market St., Denver, CO 80202

4. LOCATION OF WELL (Report location clearly and in accordance with any State requirements.)  
 At surface 268' FSL, <sup>1630'</sup> 1730' FEL, Section 4, T. 9N, R92W, 6th P.M.,  
 At proposed prod. zone Moffat County, Colorado  
 SAME

14. DISTANCE IN MILES AND DIRECTION FROM NEAREST TOWN OR POST OFFICE\*  
 25.2 miles northwest from Craig, Colorado

13. DISTANCE FROM PROPOSED\* LOCATION TO NEAREST PROPERTY OR LEASE LINE, FT. 268'  
 (Also to nearest drilg. unit line, if any)

18. DISTANCE FROM PROPOSED LOCATION\* TO NEAREST WELL, DRILLING, COMPLETED, OR APPLIED FOR, ON THIS LEASE, FT.

21. ELEVATIONS (Show whether DF, RT, Grt, etc.)  
 6950' Ungr.

23. PROPOSED CASING AND CEMENTING PROGRAM

SIZE OF HOLE	SIZE OF CASING	WEIGHT PER FOOT	SETTING DEPTH	QUANTITY OF CEMENT
16"	10-3/4" NEW	36#	300'	250 sacks
7-7/8"	5-1/2" NEW	20#	8000'	150 sacks

State of Colorado  
 Colorado Oil and Gas Conservation Commission  
 State Centennial Building  
 313 Sherman Street  
 Denver, Colorado 80203

IN ABOVE SPACE DESCRIBE PROPOSED PROGRAM: If proposal is to deepen or plug back, give data on present productive zone and proposed new productive zone. If proposal is to drill or deepen directionally, give pertinent data on subsurface locations and measured and true vertical depths. Give blowout preventer program, if any.

24. SIGNED [Signature] TITLE Petroleum Engineer DATE Aug 18, 1980

PERMIT NO. \_\_\_\_\_ APPROVAL DATE \_\_\_\_\_

APPROVED BY (Orig. Sgd.) R. A. Henricks FOR E. W. GUYNN DISTRICT ENGINEER DATE NOV 11 1980

CONDITIONS OF APPROVAL, IF ANY: \_\_\_\_\_

CONDITIONS OF APPROVAL ATTACHED TO OPERATOR'S COPY

\*See Instructions On Reverse Side

NOTICE OF APPROVAL

5. LEASE DESIGNATION AND SERIAL NO.  
 C-13833

6. IF INDIAN, ALLOTTEE OR TRIBE NAME

7. UNIT AGREEMENT NAME

8. FARM OR LEASE NAME  
 Federal

9. WELL NO.  
 # 1-4

10. FIELD AND POOL, OR WILDCAT  
 Wildcat

11. SEC., T., R., M., OR BLK. AND SURVEY OR AREA  
 SWSE Sec. 4, T.9N, R.92W

12. COUNTY OR PARISH  
 Moffat Co.

13. STATE  
 Colorado

17. NO. OF ACRES ASSIGNED TO THIS WELL  
 320

20. ROTARY OR CABLE TOOLS  
 Rotary

22. APPROX. DATE WORK WILL START\*  
 Sept. 1, 1980

DVR
RJP
JAM
JJD
RLS
CGM

FLARING OR VENTING OF GAS IS SUBJECT TO REG. DATED 1/1/80

CO. STATE OIL

