



CCL / VDL
GAMMA RAY
RADIAL CEMENT BOND LOG

Company CHEVRON
Well MONFORT PM K 03-13
Field WATTENBERG
County WELD State COLORADO

Location: API #: 05-123-14121
LAT: 40.335734074
LONG: -104.771400211
SEC 3 TWP 4 N RGE 66 W
Permanent Datum 4,728' Elevation 4,715'
Log Measured From KB
Drilling Measured From KB
Other Services N/A
Elevation K.B. 4,728'
D.F. 4727'
G.L. 4715'

| | |
|------------------------|---------------|
| Date | 01-JAN-2026 |
| Run Number | ONE |
| Depth Driller | 7445' |
| Depth Logger | 3006' |
| Bottom Logged Interval | 3000' |
| Top Log Interval | SURFACE |
| Open Hole Size | 8-5/8" |
| Type Fluid | WATER |
| Density / Viscosity | --- |
| Max. Recorded Temp. | 126.8°F |
| Estimated Cement Top | SEE LOG |
| Time Well Ready | ROA |
| Time Logger on Bottom | 14:50 |
| Equipment Number | 473 |
| Location | GREELEY |
| Recorded By | JOSH KRAL |
| Witnessed By | BRANDON TRACY |

| Borehole Record | | | Tubing Record | | | | |
|-----------------|-----|------|---------------|------|--------|------|----|
| Run Number | Bit | From | To | Size | Weight | From | To |
| | | | | | | | |
| | | | | | | | |
| | | | | | | | |

| | | | | |
|-------------------|--------|---------|---------|--------|
| Casing Record | Size | Mgt/Ft | Top | Bottom |
| Surface String | 8-5/8" | 24 # | SURFACE | 312' |
| Prot. String | | | | |
| Production String | 4-1/2" | 15.10 # | SURFACE | 7395' |
| Liner | | | | |

<<< Fold Here >>>

All interpretations are opinions based on inferences from electrical or other measurements and we cannot and do not guarantee the accuracy or correctness of any interpretation, and we shall not, except in the case of gross or willful negligence on our part, be liable or responsible for any loss, costs, damages, or expenses incurred or sustained by anyone resulting from any interpretation made by any of our officers, agents or employees. These interpretations are also subject to our general terms and conditions set out in our current Price Schedule.

Comments

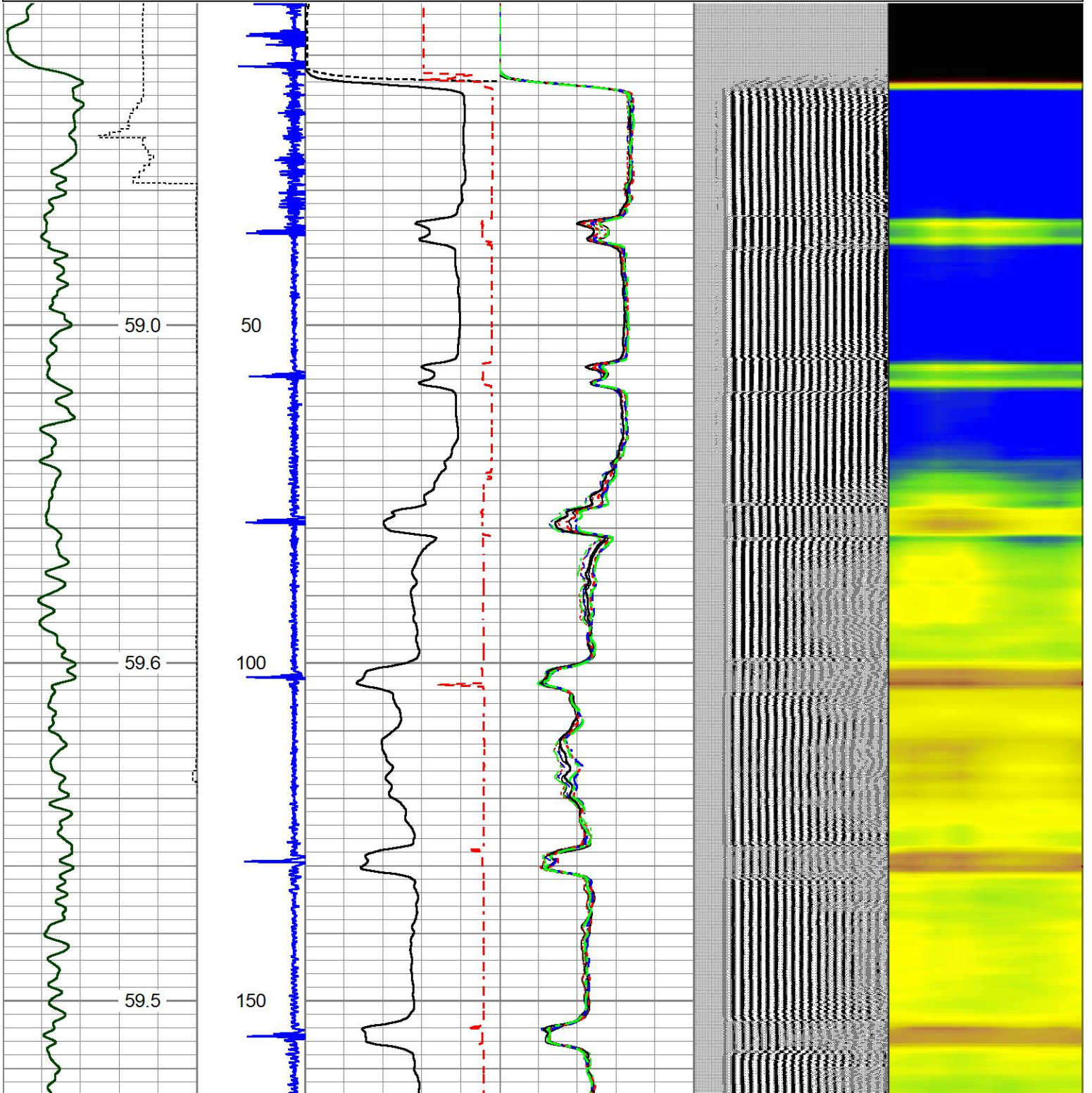
RBL LOGGED PER CUSTOMER REQUEST
FREE PIPE = 81.2 mV
ZERO PSI ON WELL
THANK YOU FOR CHOOSING JMR SERVICES

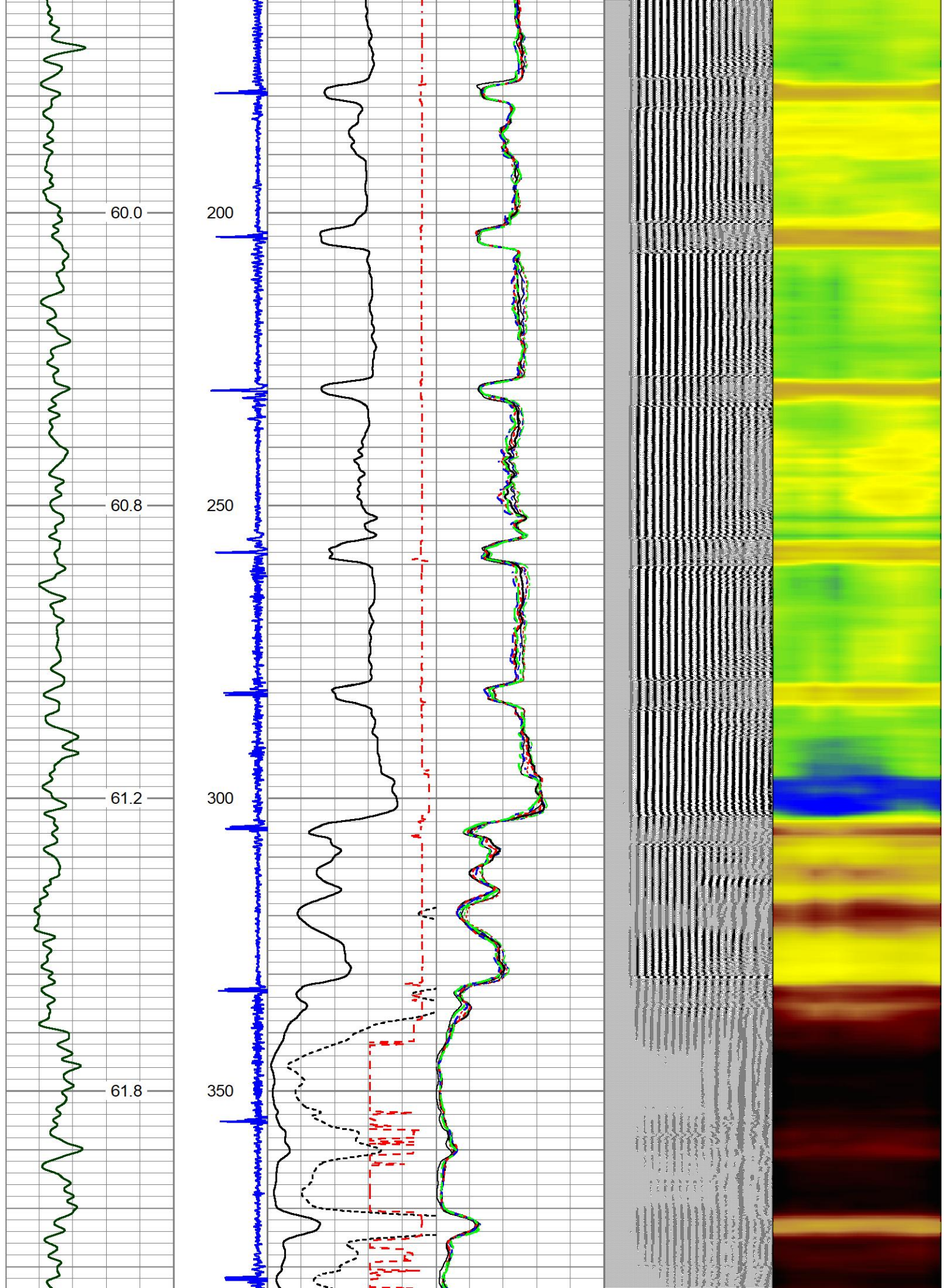


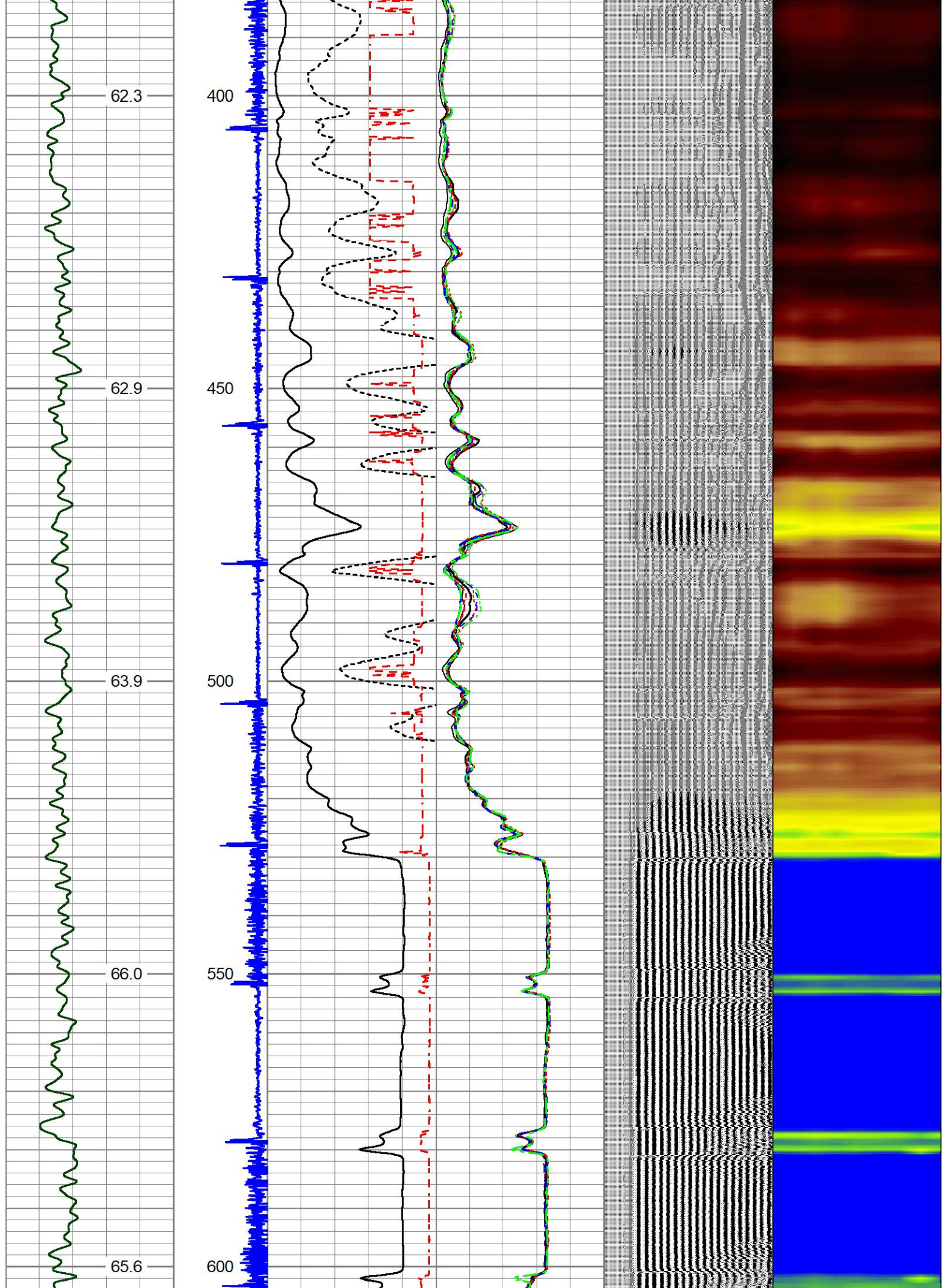
MAIN PASS

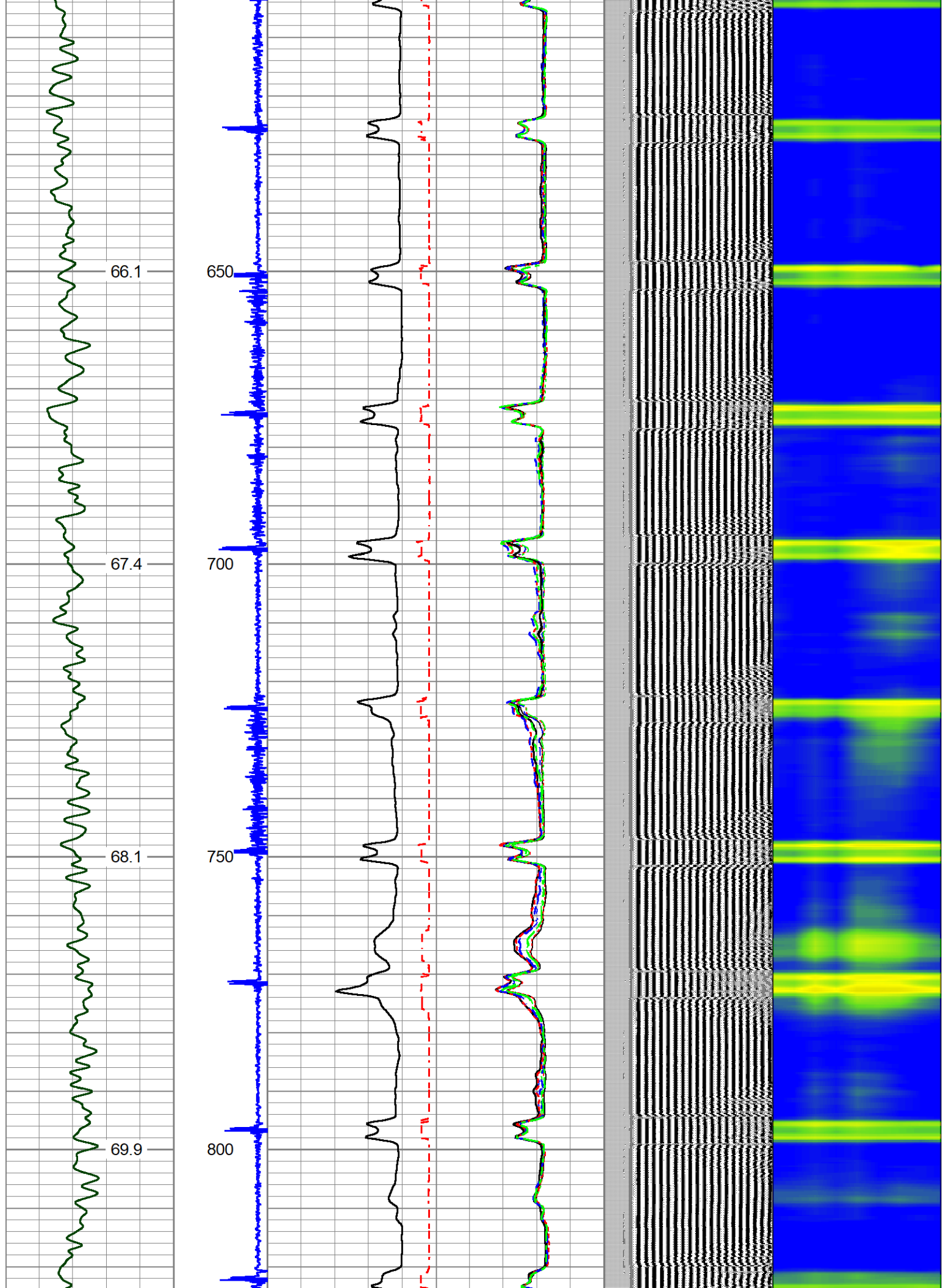
Database File chevron_monfort_pm_k03-13_rbl_1.db
 Dataset Pathname Rig_12-473/Monfort_PM_K03-13/run1/pass5
 Presentation Format rblchevron
 Dataset Creation Tue Jan 06 14:53:07 2026
 Charted by Depth in Feet scaled 1:240

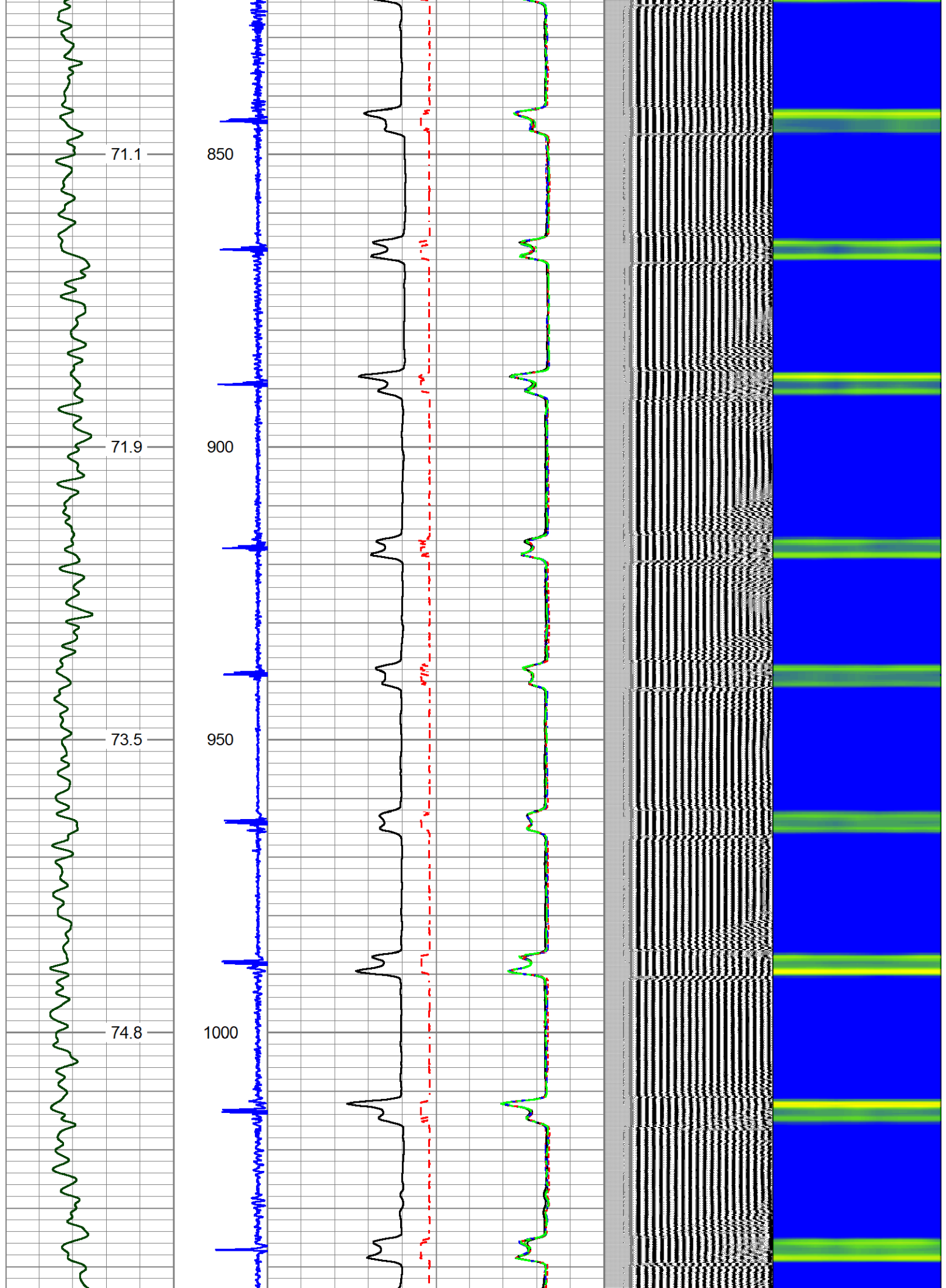
| | | | | | | | | | | | | | | | | | |
|--------|-----------|------|----|-----|---|-------|-------------|-----|---|-------|-----|-----|------------|------|---|------------|---|
| 0 | GR (GAPI) | 250 | -9 | CCL | 1 | 0 | AMP (mV) | 100 | 0 | AMPS1 | 150 | 200 | VDL (usec) | 1200 | 1 | Cement Map | 8 |
| LSPD | | | | | | 0 | AMPx10 (mV) | 20 | 0 | AMPS2 | 150 | | | | | | |
| 100 | (ft/min) | -100 | | | | TT3FT | | | 0 | AMPS3 | 150 | | | | | | |
| | | | | | | 1200 | (usec) | 200 | 0 | AMPS4 | 150 | | | | | | |
| TEMP | | | | | | | | | 0 | AMPS5 | 150 | | | | | | |
| (degF) | | | | | | | | | 0 | AMPS6 | 150 | | | | | | |
| | | | | | | | | | 0 | AMPS7 | 150 | | | | | | |
| | | | | | | | | | 0 | AMPS8 | 150 | | | | | | |

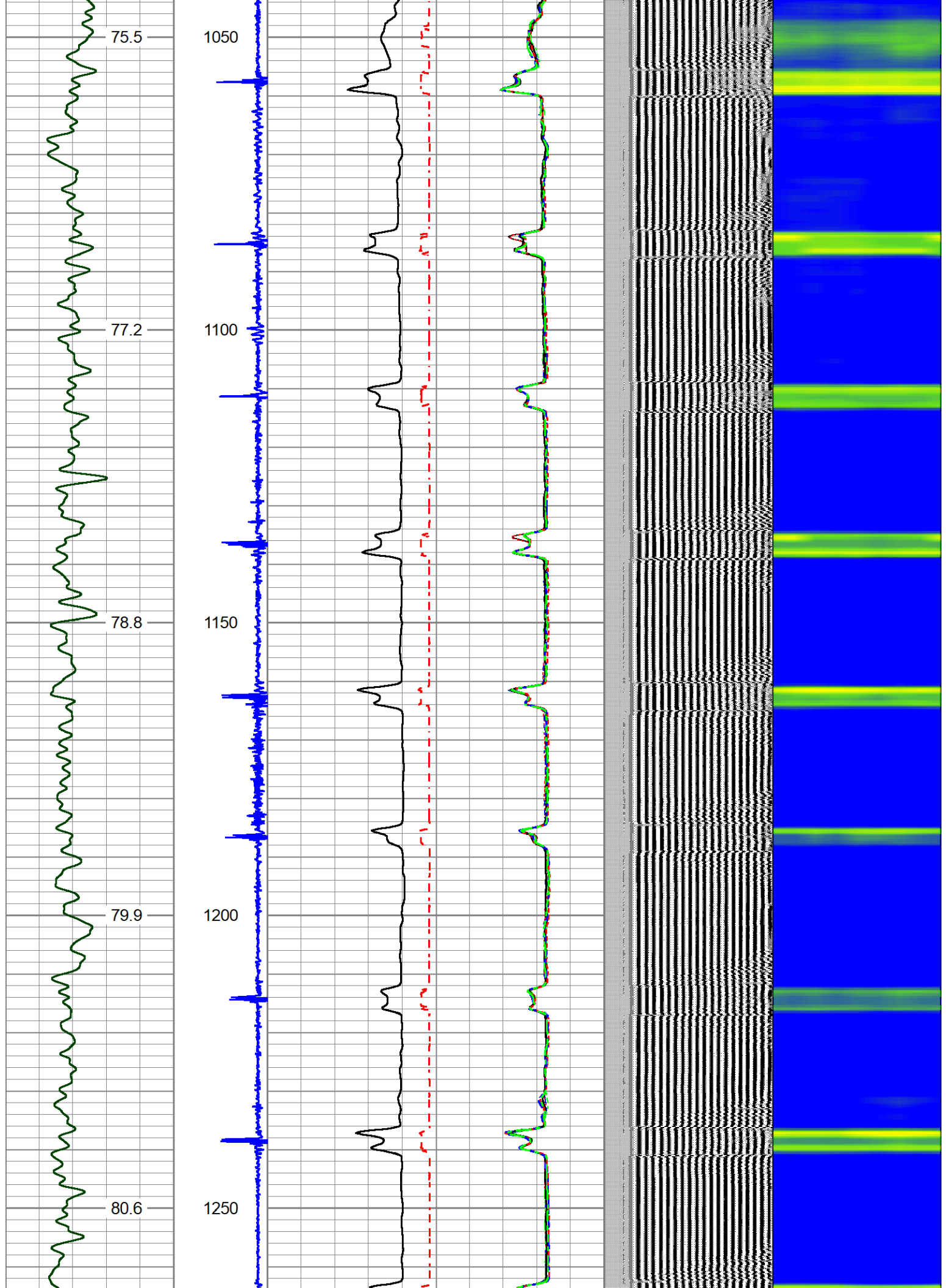


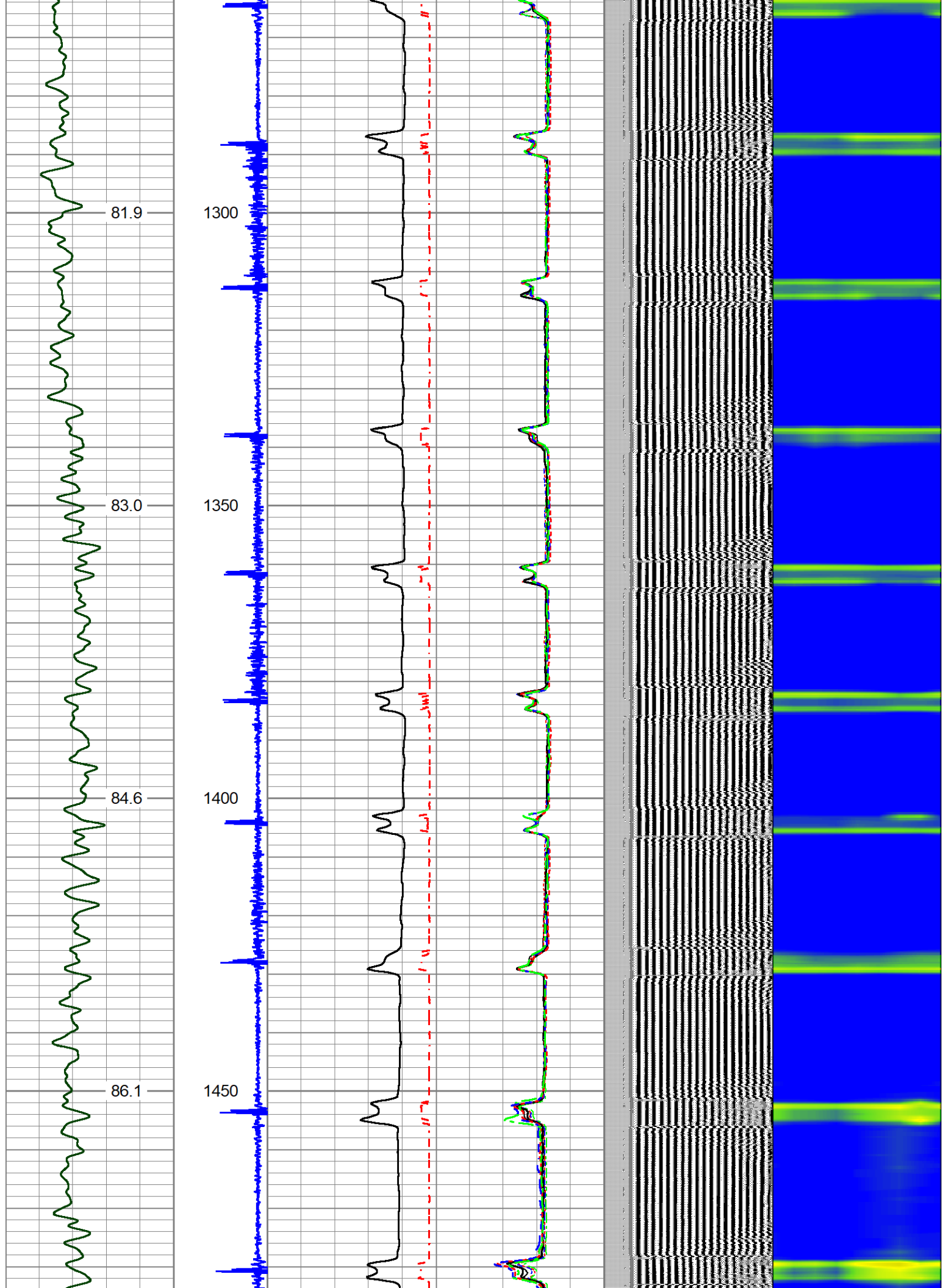


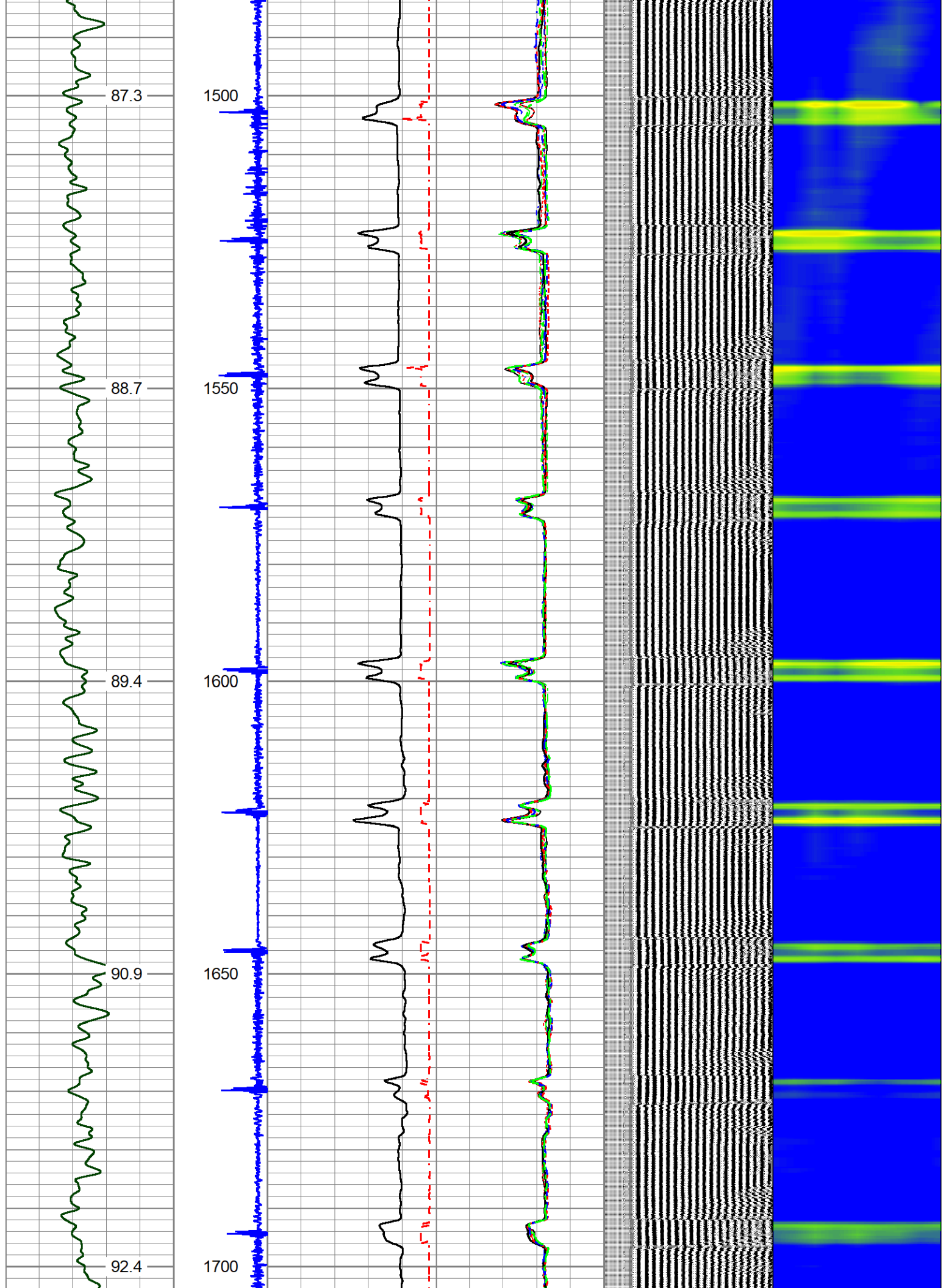


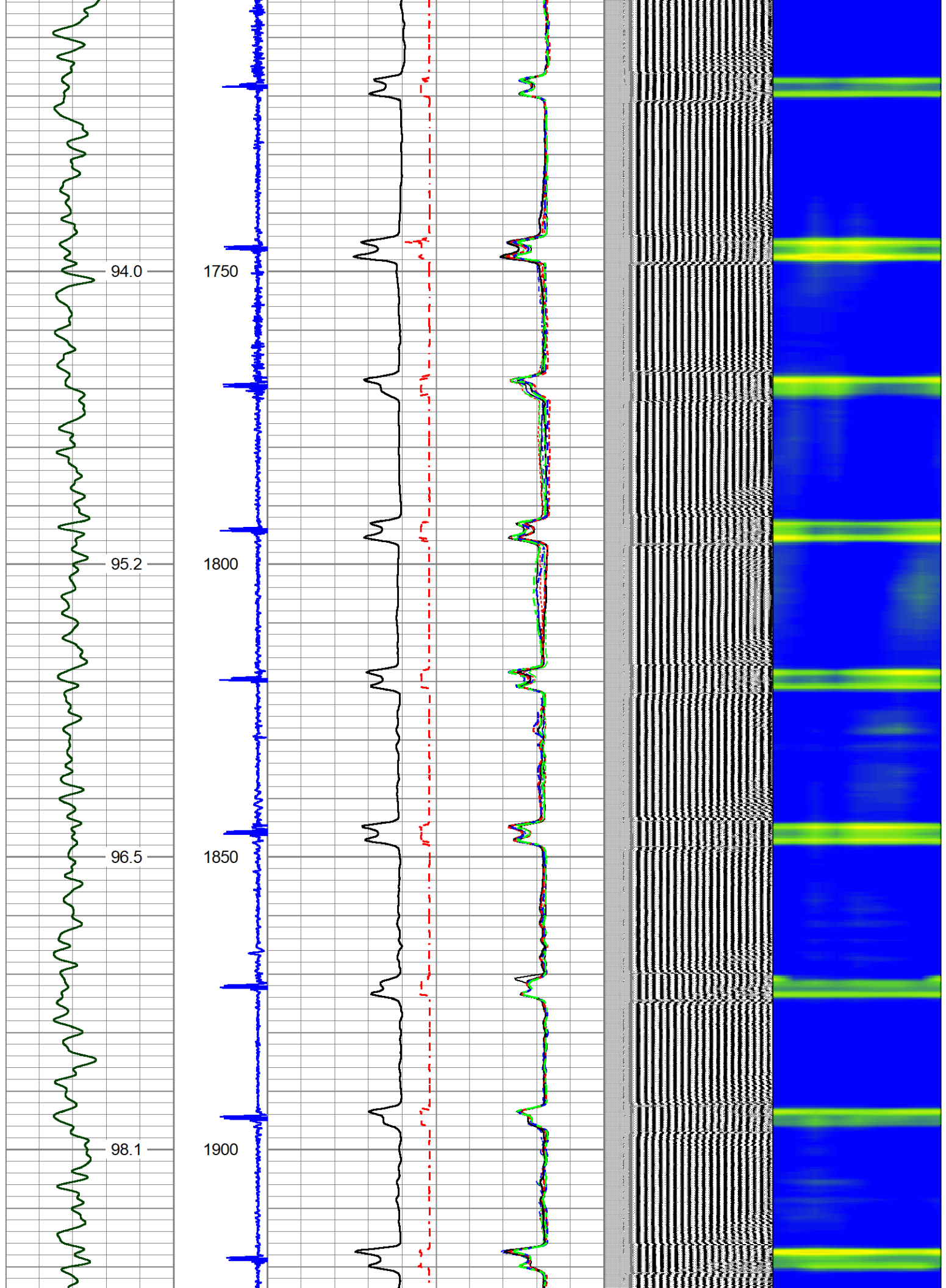


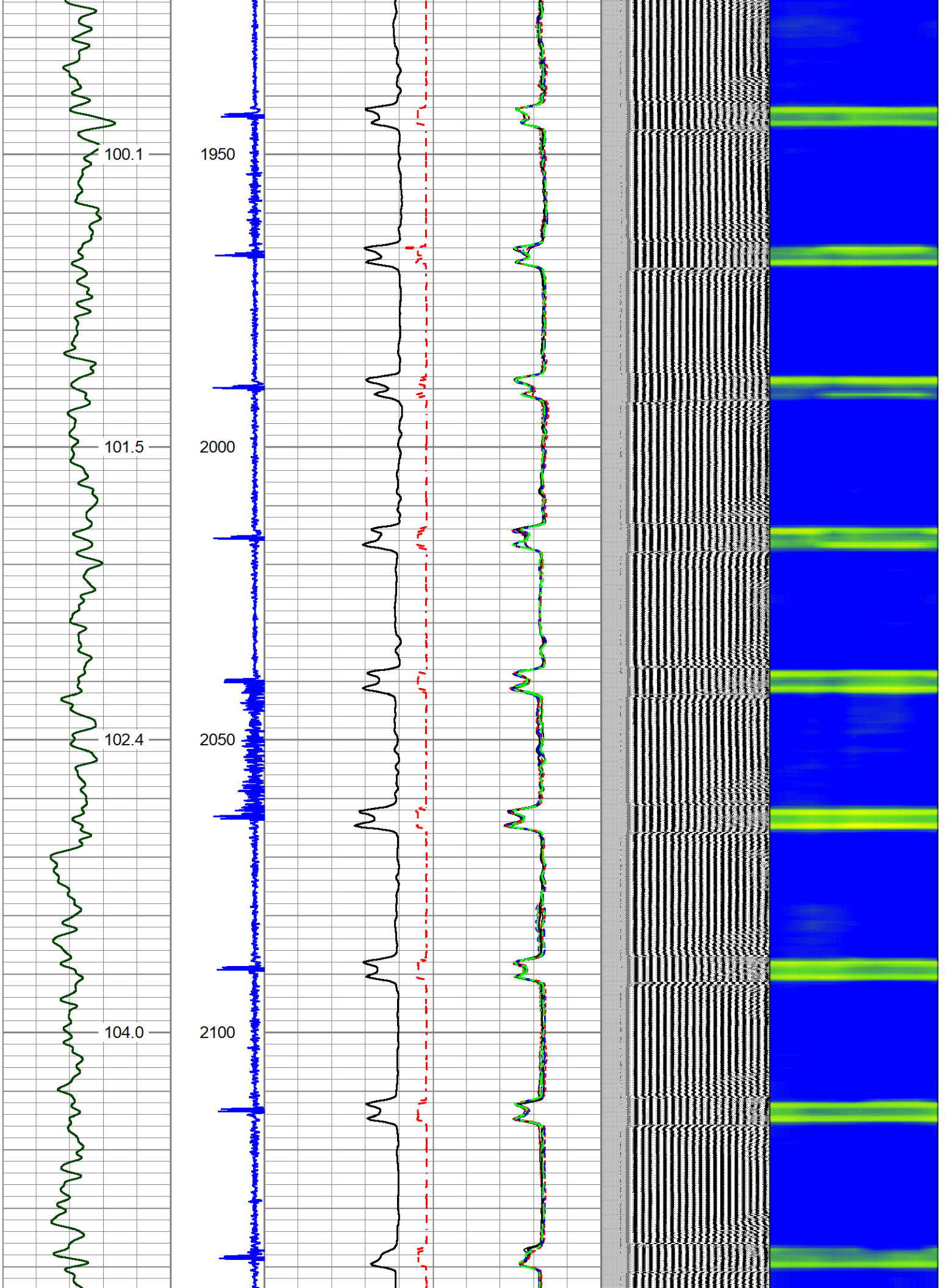


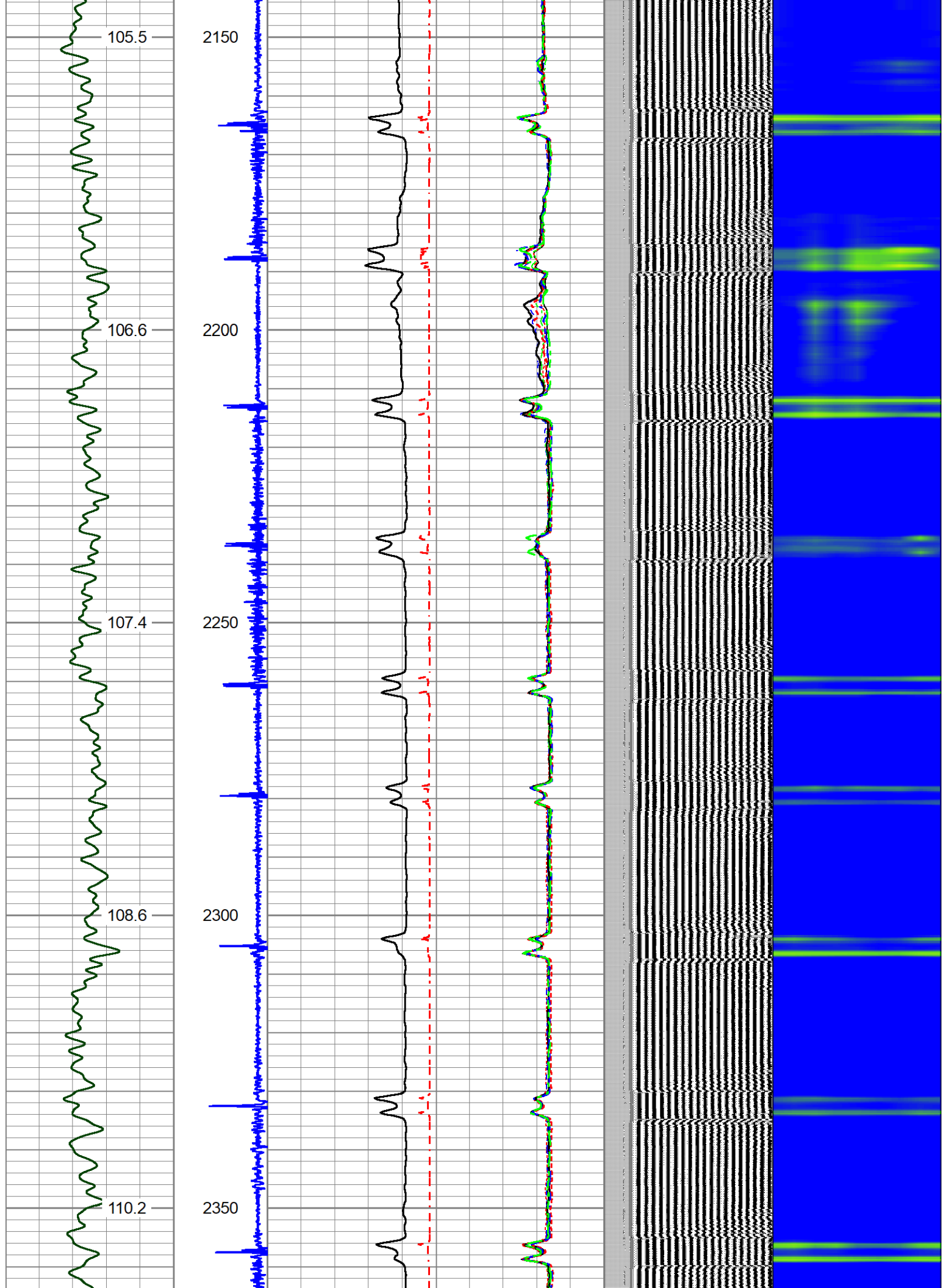


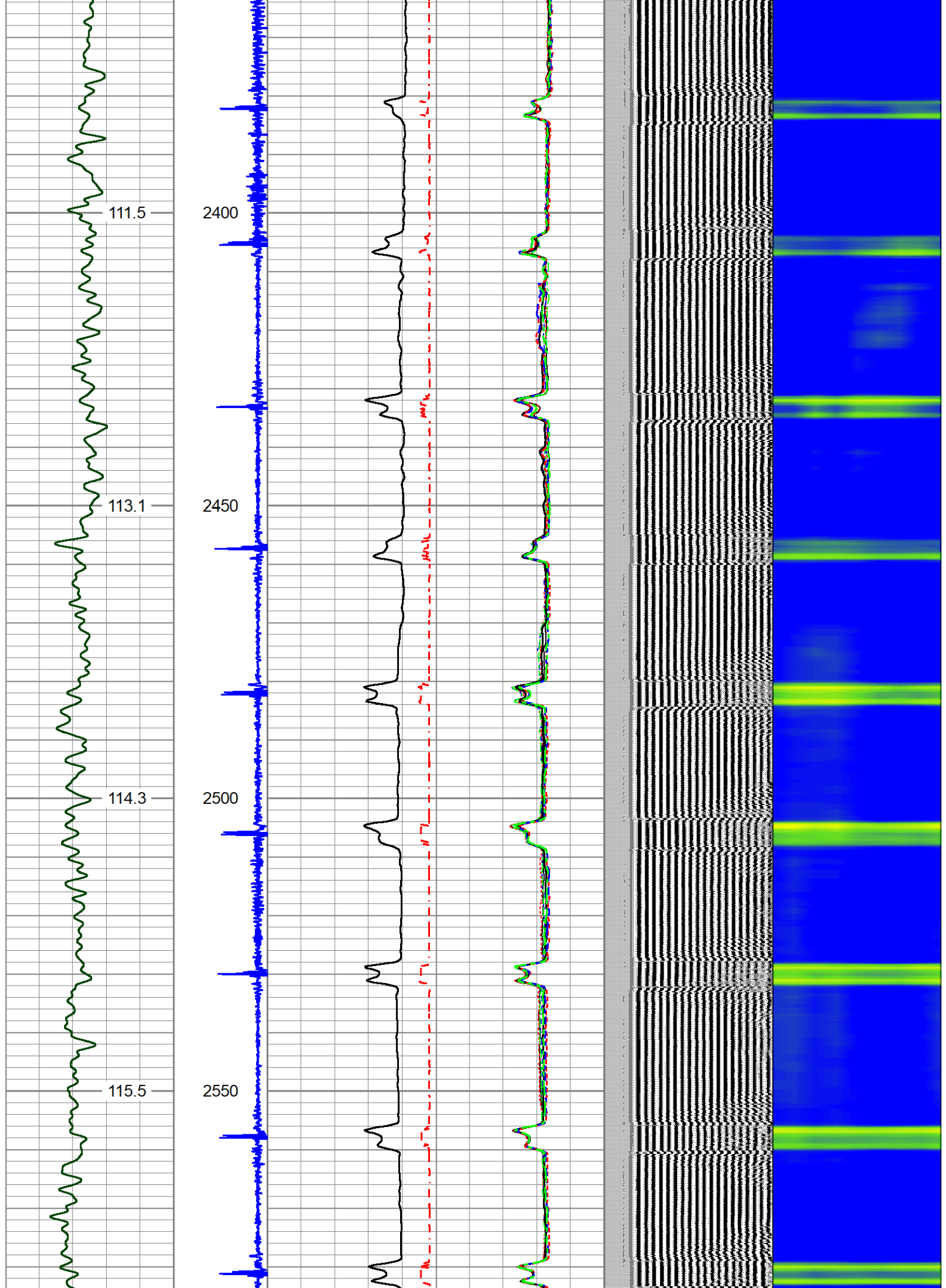


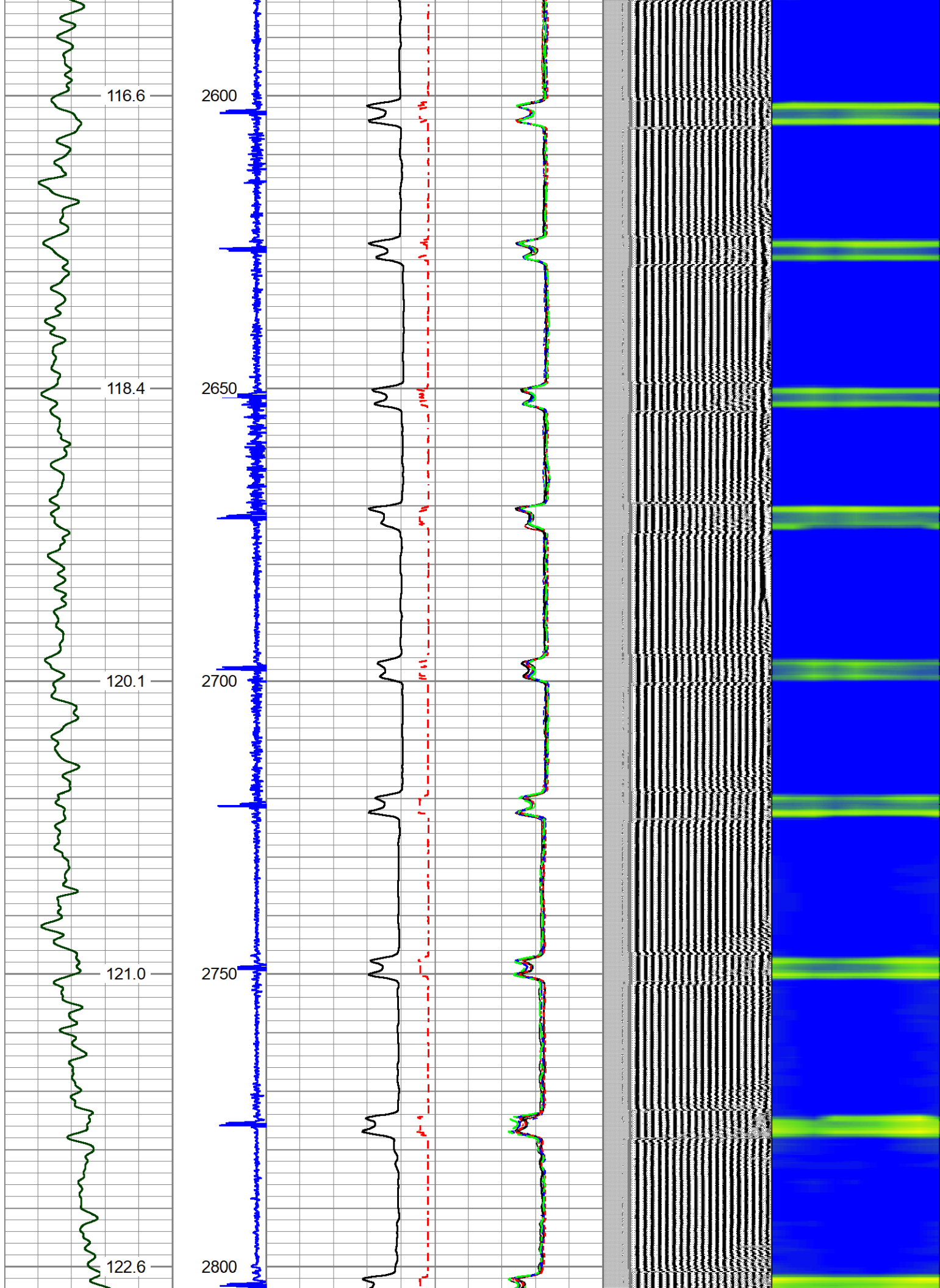


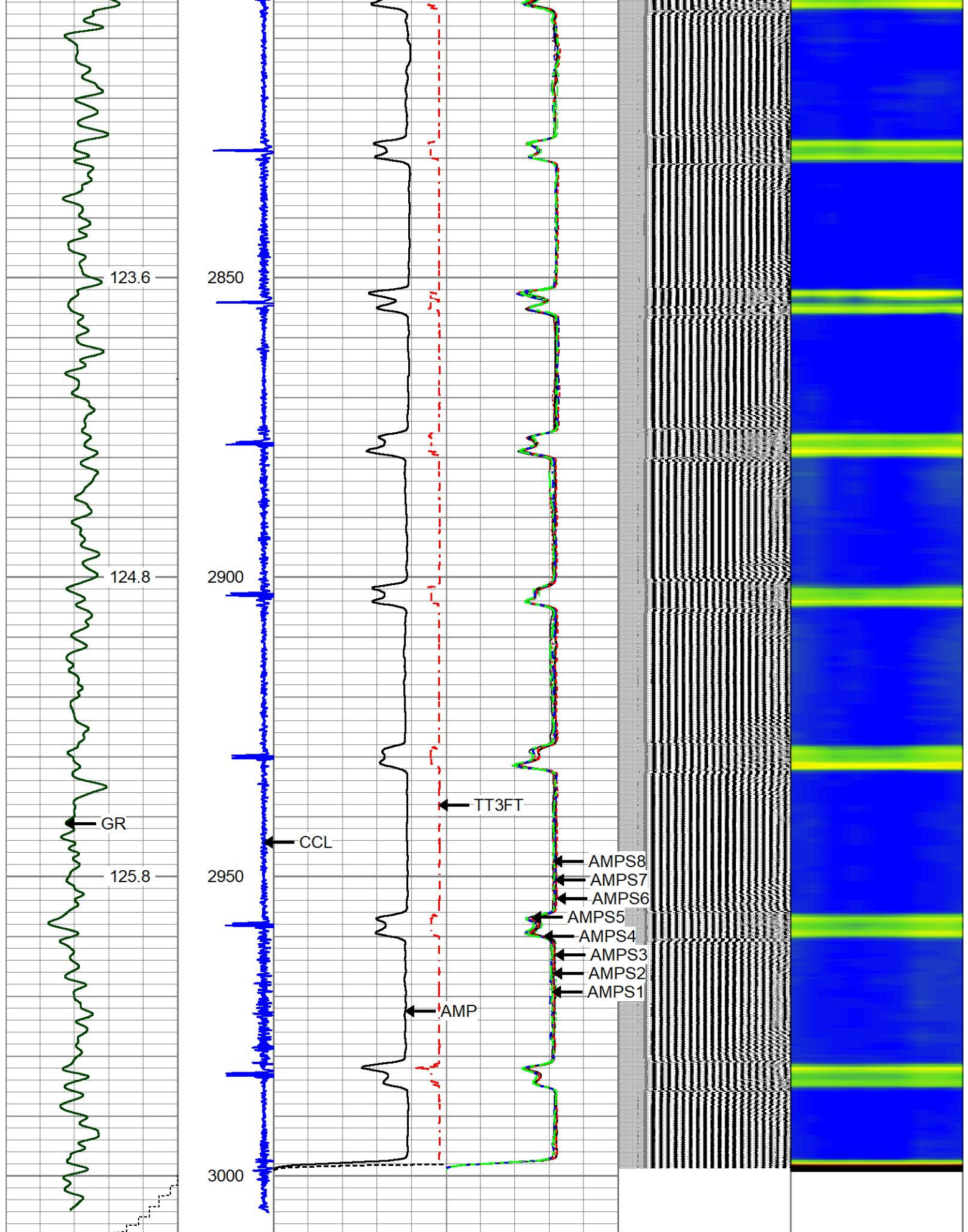












| | | | | | | | | | | | | | | | | | |
|-----|-----------|------|----|-----|---|---|----------|-------------|----|-------|-------|-----|------------|------|---|------------|---|
| 0 | GR (GAPI) | 250 | -9 | CCL | 1 | 0 | AMP (mV) | 100 | 0 | AMPS1 | 150 | 200 | VDL (usec) | 1200 | 1 | Cement Map | 8 |
| | LSPD | | | | | | 0 | AMPx10 (mV) | 20 | 0 | AMPS2 | 150 | | | | | |
| 100 | (ft/min) | -100 | | | | | | TT3FT | | 0 | AMPS3 | 150 | | | | | |

TEMP
(degF)

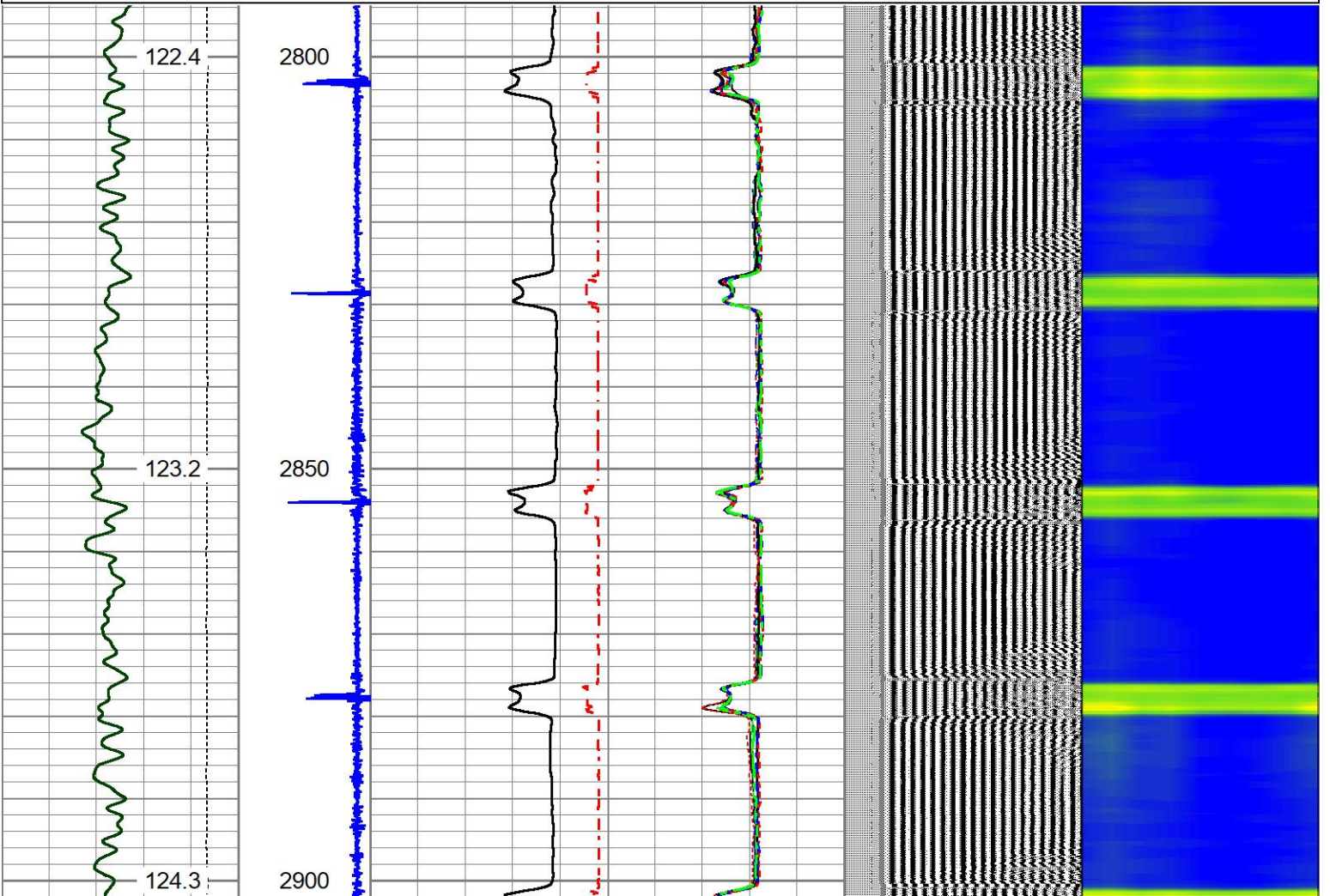
| | | | | | |
|------|--------|-----|---|-------|-----|
| 1200 | (usec) | 200 | 0 | AMPS4 | 150 |
| 0 | | | 0 | AMPS5 | 150 |
| 0 | | | 0 | AMPS6 | 150 |
| 0 | | | 0 | AMPS7 | 150 |
| 0 | | | 0 | AMPS8 | 150 |

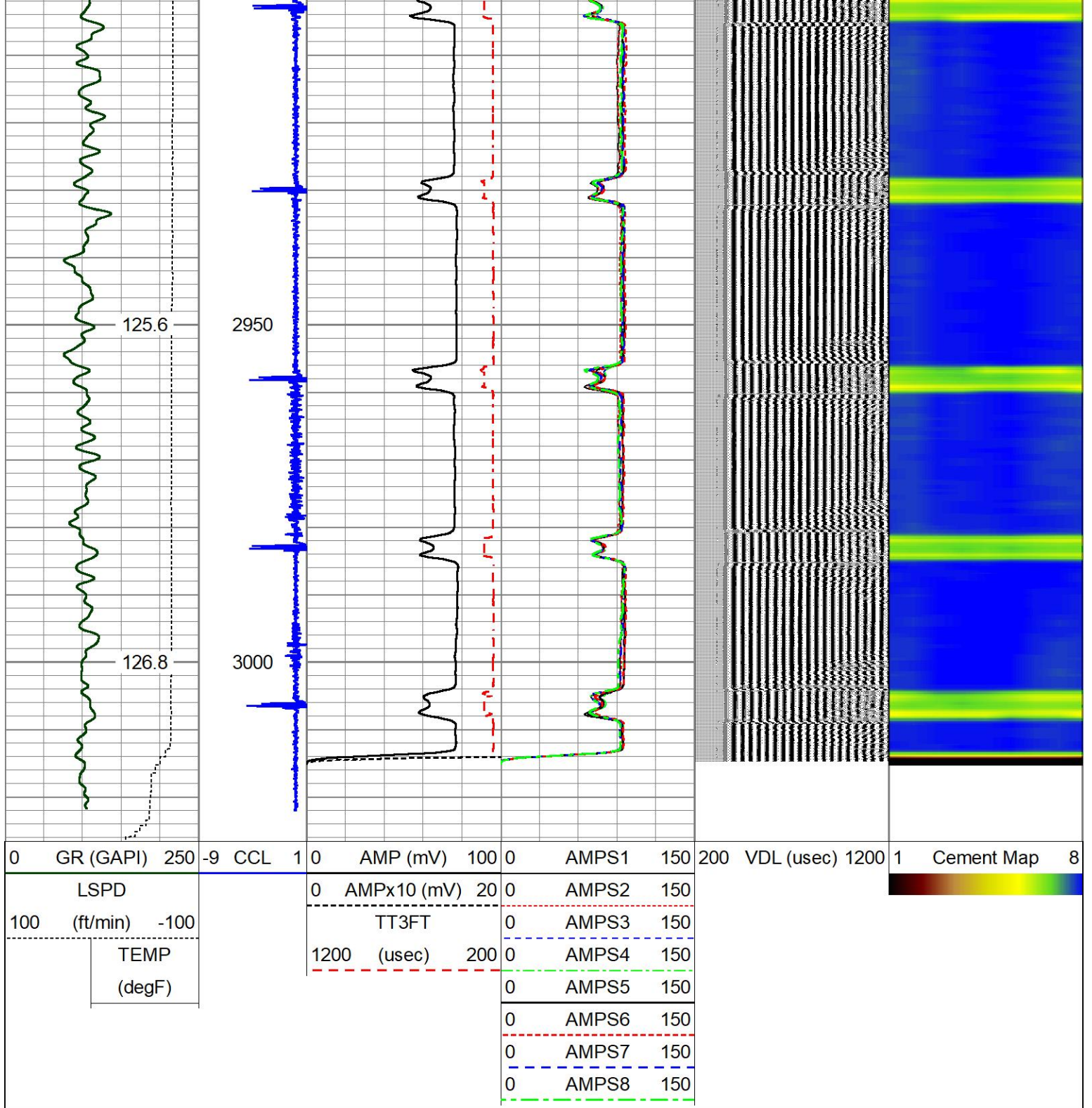


REPEAT PASS

Database File: chevron_monfort_pm_k03-13_rbl_1.db
 Dataset Pathname: Rig_12-473/Monfort_PM_K03-13/run1/pass4
 Presentation Format: rblchevron
 Dataset Creation: Tue Jan 06 14:48:18 2026
 Charted by: Depth in Feet scaled 1:240

| | | | | | | | | | | | | | | | | | | |
|-----|-----------|------|----|-----|---|------|-------------|-----|---|-------|-----|-----|------------|------|---|------------|---|--|
| 0 | GR (GAPI) | 250 | -9 | CCL | 1 | 0 | AMP (mV) | 100 | 0 | AMPS1 | 150 | 200 | VDL (usec) | 1200 | 1 | Cement Map | 8 | |
| | LSPD | | | | | 0 | AMPx10 (mV) | 20 | 0 | AMPS2 | 150 | | | | | | | |
| 100 | (ft/min) | -100 | | | | | TT3FT | | 0 | AMPS3 | 150 | | | | | | | |
| | TEMP | | | | | 1200 | (usec) | 200 | 0 | AMPS4 | 150 | | | | | | | |
| | (degF) | | | | | | | | 0 | AMPS5 | 150 | | | | | | | |
| | | | | | | | | | 0 | AMPS6 | 150 | | | | | | | |
| | | | | | | | | | 0 | AMPS7 | 150 | | | | | | | |
| | | | | | | | | | 0 | AMPS8 | 150 | | | | | | | |





Log Variables

Database: C:\ProgramData\Warrior\Data\chevron_monfort_pm_k03-13_rbl_1.db
 Dataset: Rig_12-473/Monfort_PM_K03-13/run1/pass5/_vars_

Top - Bottom

| | | | | | | | |
|-------------------------|-----------------------|------------------------|----------------------|---------------------|---------------------------|--------------------|--------------------|
| BHTEMP_Src TEMP | BOREID in 7.875 | BOTTEMP degF 100 | CASEOD in 4.5 | CASETHCK in 0 | CASEWGHT lb/ft 15.1 | MAXAMPL mV 0 | MINAMPL mV 1 |
| MINATTN db/ft 0.8 | PERFS No | PPT uSec 0 | SRFTEMP degF 0 | TDEPTH ft 0 | | | |

Variable Description

BHTEMP_Src : BHTEMP Input Source Selector
 BOREID : Borehole I.D.
 BOTTEMP : Bottom Hole Temperature
 CASEOD : Casing O.D.
 CASETHCK : Casing Thickness
 CASEWGHT : Casing Weight
 MAXAMPL : Maximum Amplitude

MINAMPL : Minimum Amplitude
 MINATTN : Minimum Attenuation
 PERFS : Perforation Flag
 PPT : Predicted Pipe Time
 SRFTEMP : Surface Temperature
 TDEPTH : Total Depth

Calibration Report

Database File chevron_monfort_pm_k03-13_rbl_1.db
 Dataset Pathname Rig_12-473/Monfort_PM_K03-13/run1/pass5
 Dataset Creation Tue Jan 06 14:53:07 2026

Gamma Ray Calibration Report

Serial Number: GCT275-0BP0_base
 Tool Model: GCT275-0BP0
 Performed: (Not Performed)

Calibrator Value: 1.0 GAPI

Background Reading: 0.0 cps
 Calibrator Reading: 1.0 cps

Sensitivity: 1.0000 GAPI/cps

Segmented Cement Bond Log Calibration Report

Serial Number: 2.75T_base
 Tool Model: Probe275T

Calibration Casing Diameter: 4.500 in
 Calibration Depth: 631.243 ft

Master Calibration, performed Tue Jan 06 14:39:49 2026:

| | Raw (v) | | Calibrated (mv) | | Results | |
|-----|---------|-------|-----------------|---------|---------|--------|
| | Zero | Cal | Zero | Cal | Gain | Offset |
| 3' | 0.005 | 1.880 | 0.250 | 81.196 | 43.159 | 0.037 |
| CAL | 0.006 | 0.805 | | | | |
| 5' | 0.006 | 1.770 | 0.250 | 81.196 | 45.887 | -0.003 |
| SUM | | | | | | |
| S1 | 0.073 | 1.962 | 0.000 | 100.000 | 52.945 | -3.885 |
| S2 | 0.005 | 1.981 | 0.000 | 100.000 | 50.618 | -0.271 |
| S3 | 0.006 | 1.925 | 0.000 | 100.000 | 52.101 | -0.293 |
| S4 | 0.005 | 1.947 | 0.000 | 100.000 | 51.504 | -0.280 |
| S5 | 0.005 | 1.874 | 0.000 | 100.000 | 53.511 | -0.293 |
| S6 | 0.005 | 1.834 | 0.000 | 100.000 | 54.677 | -0.291 |
| S7 | 0.005 | 1.852 | 0.000 | 100.000 | 54.141 | -0.277 |
| S8 | 0.005 | 1.888 | 0.000 | 100.000 | 53.096 | -0.270 |

Internal Reference Calibration, performed (Not Performed):

| | Raw (v) | | Calibrated (v) | | Results | |
|-----|---------|-------|----------------|-------|---------|--------|
| | Zero | Cal | Zero | Cal | Gain | Offset |
| CAL | 0.000 | 0.000 | 0.006 | 0.805 | 1.000 | 0.000 |

Air Zero Calibration, performed (Not Performed):

| | Raw (v) | Calibrated (v) | Results |
|-----|---------|----------------|---------|
| | Zero | Zero | Offset |
| 3' | 0.000 | 0.000 | 0.000 |
| 5' | 0.000 | 0.000 | 0.000 |
| SUM | | | |
| S1 | 0.000 | 0.000 | 0.000 |
| S2 | 0.000 | 0.000 | 0.000 |
| S3 | 0.000 | 0.000 | 0.000 |
| S4 | 0.000 | 0.000 | 0.000 |
| S5 | 0.000 | 0.000 | 0.000 |
| S6 | 0.000 | 0.000 | 0.000 |
| S7 | 0.000 | 0.000 | 0.000 |
| S8 | 0.000 | 0.000 | 0.000 |

Temperature Calibration Report

Serial Number: 2.75T_base
 Tool Model: Probe275T
 Performed: Fri May 24 11:05:51 2019

| | Reference | Reading |
|-----------------|-------------|-------------|
| Low Reference: | 100.00 degF | 108.60 degF |
| High Reference: | 350.00 degF | 405.00 degF |

Gain: 0.84
 Offset: 8.40
 Delta Spacing: 1

| Sensor | Offset (ft) | Schematic | Description | Length (ft) | O.D. (in) | Weight (lb) | |
|---------------|-------------|-----------|--|--|-----------|-------------|--|
| Error_Ct | 20.58 | | CENT-BC275-0000 Probe 2.75" Bowspring Centralizer | 2.83 | 2.75 | 24.00 | |
| RadiiHeadVolt | 17.75 | | | | | | |
| TEMP | 14.95 | | | | | | |
| WVFS8 | 12.80 | | | RBT-Probe275T (2.75T_base) 2.75" Radial with Integral Temperature Sub | 9.20 | 2.75 | |
| WVFS7 | 12.80 | | | | | | |
| WVFS6 | 12.80 | | | | | | |
| WVFS5 | 12.80 | | | | | | |
| WVFS4 | 12.80 | | | | | | |
| WVFS3 | 12.80 | | | | | | |
| WVFS2 | 12.80 | | | | | | |
| WVFS1 | 12.80 | | | | | | |
| WVFCAL | 12.80 | | | | | | |
| WVF3FT | 12.80 | | | | | | |

