



00260724

SECTION 32  
T. 9 N., R. 81 W., 6th P. M.  
JACKSON COUNTY, COLORADO

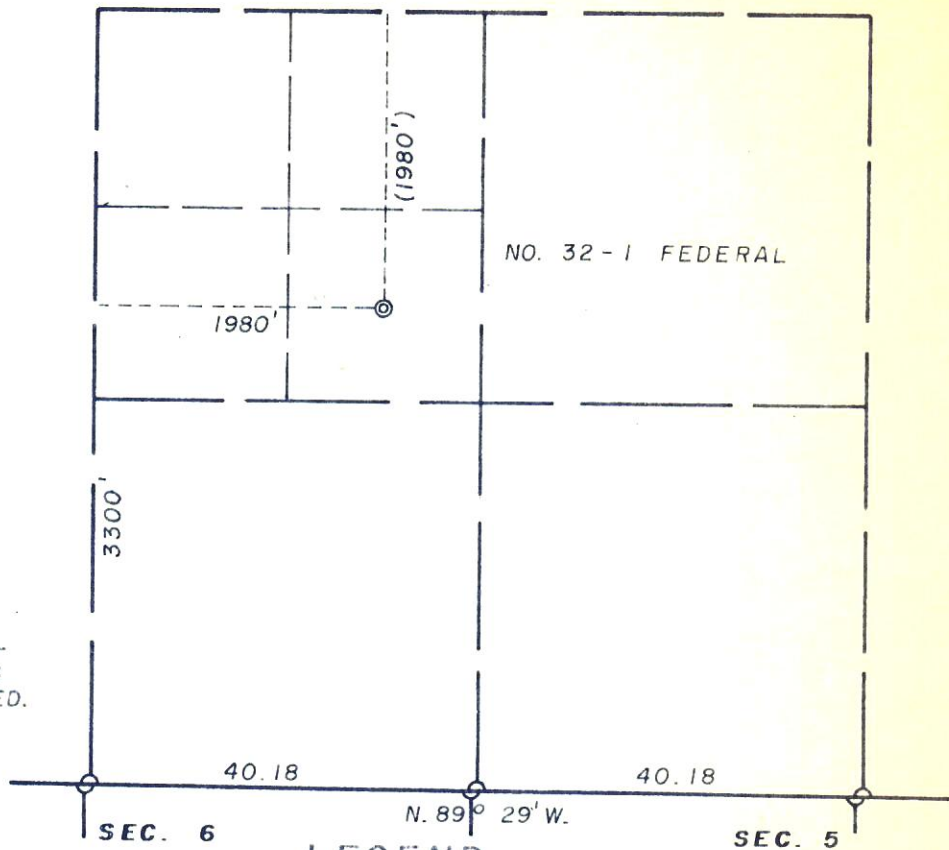
RECEIVED  
JUN 8 1975  
COLO. OIL & GAS CONS. COMM.



SCALE

1" = 20 Chains

DISTANCES ARE EXPRESSED IN CHAINS EXCEPT AS INDICATED.



LEGEND

- U. S. Government Brass Cap corner ○
- Original stone corner, properly marked, firmly set ●
- Iron pipe set at proportionate distance ■
- Corner established by others as indicated □
- Brass cap set B.C.
- Temporary corner set this survey △
- Dependent Resurvey ———
- Protraction - - - - -
- Well location ◎

ELEVATIONS:

Before grading

LOCATION.....	8330
R.P. 100' N.....	8331
R.P. 100' S.....	8328
R.P. 100' E.....	8329
R.P. 100' W.....	8332

ELEV'S. REFERRED TO

32	T. 9 N., R. 81 W.
6   5	T. 8 N., R. 81 W.
ELEV. 8299	

SURVEY AND PLAT BY:  
**WILLIAM G. LADD** consulting engineer  
 SUITE 304 WESTERN RESOURCES BLDG., CASPER, WYOMING  
 Direct solar lines and electronically measured distances, Ref. Bk. No. 121, P. 62

PLATTED FIELD NOTES OF SURVEY  
 MARKING WELL LOCATION  
 SE 1/4 NW 1/4, SECTION 32  
 FOR

BURTON - HAWKS EXPLORATION CO., LTD., CASPER, WYO.

Dated: 5 - 22 - 1975  
Work Order No. 4175

*William G. Ladd*  
 CERTIFIED TRUE & CORRECT, SURVEYOR  
 WYOMING REG NO. 519 P.E. & L.S.