

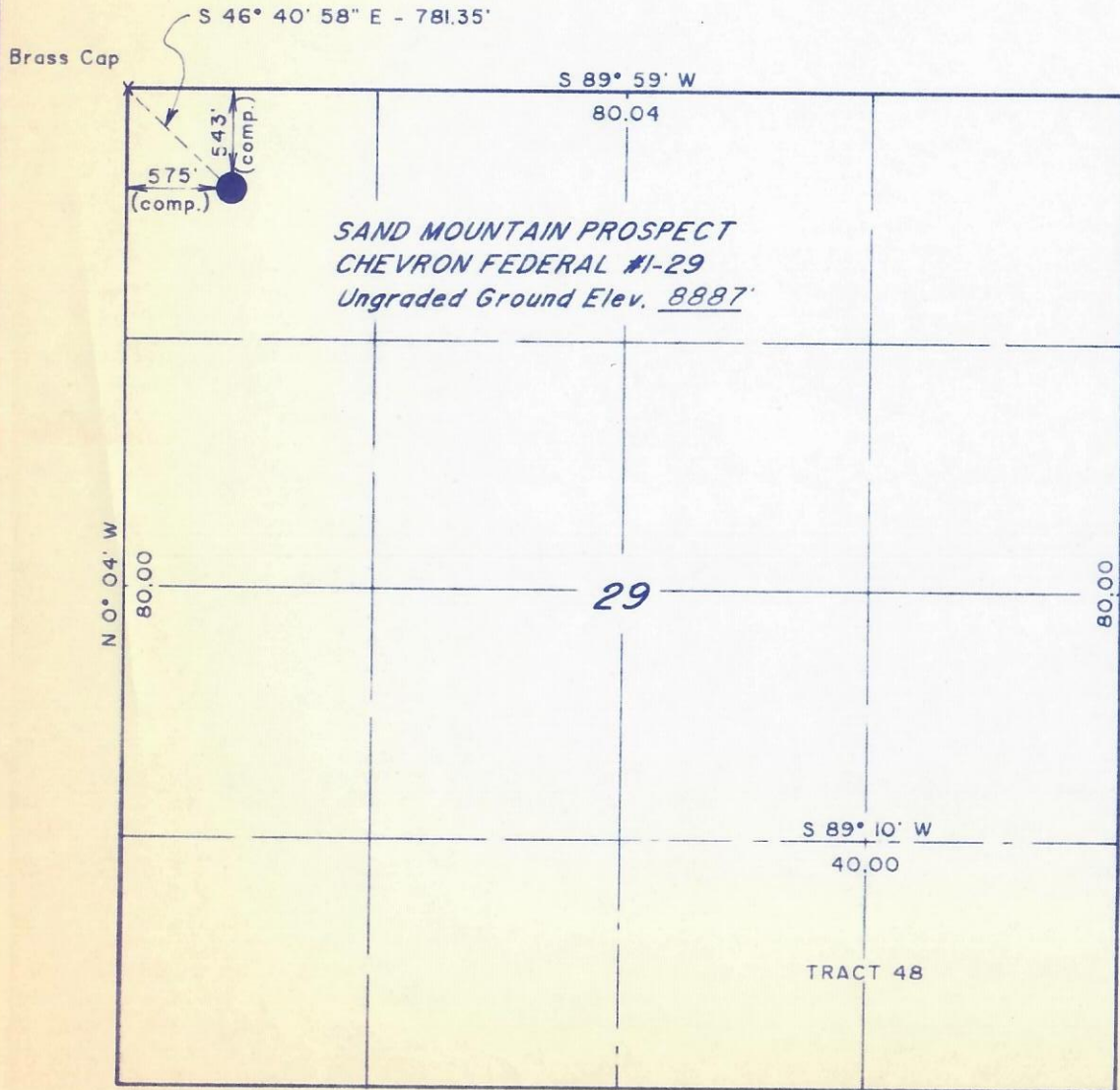
T 9 N, R 86 W, 6th P.M.

PROJECT
CHEVRON U.S.A., INC.

WELL LOCATION, SAND MOUNTAIN PROSPECT
CHEVRON FEDERAL #1 - 29, LOCATED AS
SHOWN IN THE NW 1/4 NW 1/4 SECTION 29,
T 9 N, R 86 W, 6th P.M., ROUTT CO.,
COLORADO.

BASIS OF ELEVATION

SPOT ELEVATION ON A RIDGE IN THE NW 1/4 NE 1/4, SECTION 29,
T 9 N, R 86 W, 6th P.M., TAKEN FROM THE PILOT KNOB
QUADRANGLE, COLORADO - ROUTT COUNTY 7.5 MINUTE
QUADRANGLE TOPOGRAPHY MAP PUBLISHED BY THE U.S.
DEPARTMENT OF THE INTERIOR, GEOLOGICAL SURVEY IN 1971.
SAID ELEVATION IS MARKED AS BEING 8923'.



CERTIFICATE

THIS IS TO CERTIFY THAT THE ABOVE PLAT WAS PREPARED FROM
FIELD NOTES OF ACTUAL SURVEYS MADE BY ME OR UNDER MY
SUPERVISION AND THAT THE SAME ARE TRUE AND CORRECT TO THE
BEST OF MY KNOWLEDGE AND BELIEF

Lawrence Kay
REGISTERED LAND SURVEYOR
REGISTRATION NO 9019
STATE OF Colorado

UINTAH ENGINEERING & LAND SURVEYING P. O. BOX Q - 85 SOUTH - 200 EAST VERNAL, UTAH - 84078			
SCALE	1" = 1000'	DATE	7-9-87
PARTY	LDT GDT KH DLS	REFERENCES	GLO
WEATHER	FAIR	FILE	CHEVRON - MISC.

Basis of Bearings is a solar
observation taken on June 25, 1987.
X = Located Section Corners

ATTACHMENT A

Revised 8-21-87

