

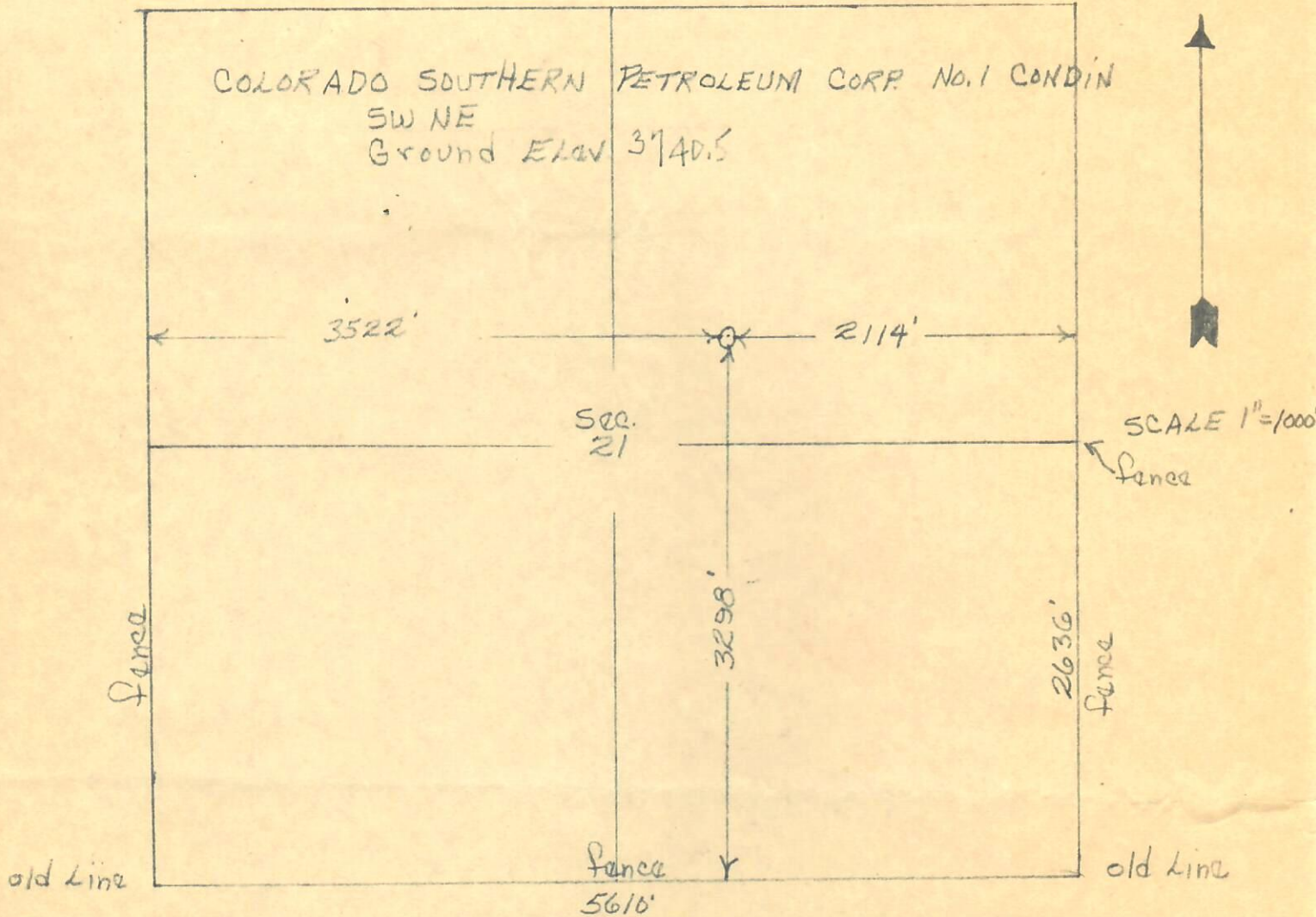
CERTIFICATE OF SURVEY

for
Colorado Southern Petr. Corp.
Logan County, Colorado

RECEIVED
AUG 21 1957

OIL & GAS
CONSERVATION COMMISSION

T10N R49W 6PM.



I hereby certify that the above plat is an accurate representation of a correct survey showing the location of Colorado Southern Petr. Corp. - Condin No. 1 Oilwell in C SW $\frac{1}{4}$ NE $\frac{1}{4}$ Sec. 21 T10N R49W 6PM. The elevation of the ground at the stake is 3740.5 from U.S.G.S. Bench Mark.

Fort Morgan, Colorado
August 10, 1957.

Leslie Osborne
Registered Professional Engineer
State of Colorado.

