

UNITED STATES
DEPARTMENT OF THE INTERIOR
BUREAU OF LAND MANAGEMENT



00257137

FORM APPROVED
Budget Bureau No. 1004-0135
Expires: September 30, 1990

5. Lease Designation and Serial No.

D-28963

6. If Indian, Allottee or Tribe Name

SUNDRY NOTICES AND REPORTS ON WELLS

Do not use this form for proposals to drill or to deepen or reentry to a different reservoir.
Use "APPLICATION FOR PERMIT—" for such proposals

SUBMIT IN TRIPLICATE

1. Type of Well

Oil Well Gas Well Other

2. Name of Operator

Conoco Inc.

3. Address and Telephone No.

851 Werner Court, Casper, WY 82601 (307) 261-7800

4. Location of Well (Footage, Sec., T., R., M., or Survey Description)

665' FNL, 2100' FEL (NW/NE), Sec. 11, T9N, R79W, 6th P.M.

7. If Unit or CA, Agreement Designation

McCallum Unit

8. Well Name and No.

McCallum Unit No. 3

9. API Well No.

05-057-06060

10. Field and Pool, or Exploratory Area

McCallum/Frontier

11. County or Parish, State

Jackson, CO

5. CHECK APPROPRIATE BOX(S) TO INDICATE NATURE OF NOTICE, REPORT, OR OTHER DATA

TYPE OF SUBMISSION

TYPE OF ACTION

- Notice of Intent
- Subsequent Report
- Final Abandonment Notice

- Abandonment
- Recompletion
- Plugging Back
- Casing Repair
- Altering Casing
- Other

- Change of Plans
- New Construction
- Non-Routine Fracturing
- Water Shut-Off
- Conversion to Injection

(Note: Report results of multiple completion on Well Completion or Recompletion Report and Log form.)

6. Describe Proposed or Completed Operations (Clearly state all pertinent details, and give pertinent dates, including estimated date of starting any proposed work. If well is directionally drilled, give subsurface locations and measured and true vertical depths for all markers and zones pertinent to this work.)

A previous sundry dated 1/25/91 for this well was submitted, requesting permission to plug and abandon the Lakota perforations and recomplete to the Frontier. It was stated in that previous sundry that "If commercial production cannot be established from the Frontier, the well will be P&A'd".

Work was done on the well, and commercial production from the Frontier could not be established. However, upon further evaluation, it was decided that it would be beneficial to recomplete the well as a Pierre "B" injector, instead of plugging it. A summary of the work done to date is attached. Conoco is requesting permission to recomplete the well to the Pierre "B" formation as an injection well. A summary of the proposed work is also attached.

RECEIVED

MAR 18 1991

BLM-Craig (3), WOGCC (2), Well File, ADN

COLO. OIL & GAS CONS. COMM

14. I hereby certify that the foregoing is true and correct:

Signed Mark S. Cetera Title Administrative Supervisor Date March 13, 1991

(This space for Federal or State office use)

Approved by Ed DiMattera Title SR. PETROLEUM ENGINEER Date APR 03 1991
Conditions of approval, if any:

This U.S.C. Section 10101 makes it a crime for any person knowingly and willfully to make to any department or agency of the United States any false statement or representations as to any matter within its jurisdiction.

WORK DONE TO DATE

- 2/11/91 RIH with bit & 7" scraper. Tagged fill at 5,239' GL. Circulated hole down to 5,334' GL. Lost circulation. Shut in for night.
- 2/12/91 POOH with tubing. RIH with tubing and cement retainer. Set retainer st 5,138' GL. Pumped 122 sacks of cement below retainer. Pressured up to 850#. Stung out of retainer. Pumped 16 sacks above retainer. POOH with tubing. Shut in well.
- 2/14/91 RIH with bit and scraper. Tagged cement at 5,043' GL. Circulated hole with 3% KCL for 2 hours. POOH. Logged well and ran gauge ring. Ran packer and perf guns with wireline and set packer. GIH with tubing and stung into packer. Shut in well.
- 2/15/91 Swabbed tubing. Dropped bar to set off guns. Shot perfs at 4,540'-4,560' KB (4,530'-4,550' GL). Waited 30 minutes. Swabbed 1/4 bbl fluid. Shut in well.
- 2/18/91 Swabbed tubing. No fluid. Laid down 20 joints of tubing out of derrick. Shut in well.

RECEIVED

MAR 18 1991

COLO. OIL & GAS CONS. COMM.

1. Notify Colorado Oil & Gas Commission and Bureau of Land Management 48 hours prior to rig up to allow them to witness the plugging operations.
2. RIH with 3/4" overshot on sandline to retrieve perforating bar. POOH with perforating bar. Make 1 swab run and report any fluid recovered to engineering before plugging off Frontier.
3. Establish an injection rate below the packer using lease water- maximum surface pressure not to exceed 1200 psig. Mix and pump 56 sacks cement down tubing. Displace 42 sacks of the cement below the packer.
4. Sting out of the packer and spot the remaining 14 sacks of cement on top of the packer.
5. Pull tubing uphole to 4,257'. Pump 47.1 bbls 9 ppg mud and pull tubing uphole to +/- 3,121'.
6. Mix and pump 224 sacks cement down tubing. Pull tubing up to 2,195'. Pump 19.5 bbls 9 ppg mud. Pull tubing uphole to 1,700'. Mix and pump 23 sacks cement down tubing.
7. Pull tubing uphole to 1,530'. Reverse clean. POOH. Wait on cement 8 hours.
8. RIH with bit and scraper to new PBTD (approximately 1,560' KB). Drill out to 1,560' if cement is tagged shallower. POOH. RIH with model AD-1 packer to 1,560' and set packer. Pressure test backside to 500 psi to determine if casing leaks exist. If casing will not hold pressure, isolate casing leaks to within 60' (consult with engineering if casing leaks are found). POOH. If casing leaks are severe (greater than 60' of leaks), shut down and prepare to run 4-1/2" liner.

PROCEDURE TO RUN 4-1/2" LINER IF EXISTING CASING
HAS EXTENSIVE DAMAGE

1. RIH with 1,560' (39 jts) of 4-1/2" 10.5 lb/ft, J-55 casing.
2. MIRU cementers. Mix and pump 165 sacks of cement down 4-1/2" casing. Drop cementing plug and displace with 24.6 barrels (2,035) of Pierre "B" lease water. WO cement 8 hours.
3. RIH with bit and scraper and tag cement. Top of cement should be approximately at 1,550' to allow for enough rat hole. Drill out to 1,550' if shallower. POOH.
4. Load casing with water and pressure test casing to 500 psig for 15 minutes.

PIERRE "B" RECOMPLETION PROCEDURE

1. MIRU perforators.

RECEIVED

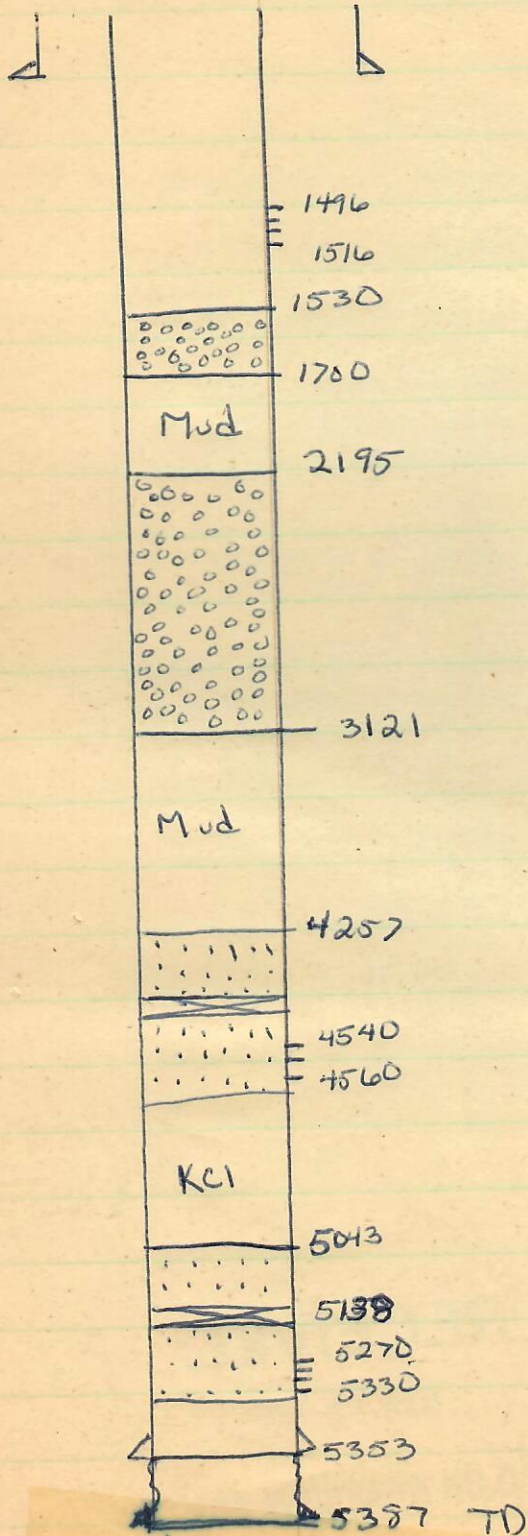
MAR 18 1991

COLO. OIL & GAS COM. COMM.

2. RIH with perforating guns and GR/CCL to 1,530'. Correlate depth to attached Petro-Log Radioactivity Log dated 9-17-87. Perforate the Pierre "B" from 1,496' to 1,516' KB. POOH and RD perforators.
3. MIRU acidizing trucks.
4. Acidize the Pierre "B" at 1/2 BPM pumping 2 bbls acid into each foot of perforations.
5. Displace final barrel of acid into perms at 1,496'-1,497' KB.
6. RIH with model AD-1 packer on 2-3/8" tubing to 1,462' KB. Set packer at 1,462' KB.
7. Perform UIC test. Load backside with Pierre "B" produced water and 2 gals Nalco 4907 corrosion inhibitor. Pressure test to 1,000 psig to satisfy requirements. Notify Larry Robins with the Colorado Oil and Gas Commission at (303) 894-2100 24 hours prior to test. Rig down.
8. Connect injection line from well No. 99 to wellhead and put on injection at maximum allowable surface pressure of 923 psig.
9. After injection rates have stabilized, an injection survey will be conducted to evaluate injection performance. Also, the injection survey will be required by regulatory commissions.

031191

RECEIVED
MAR 18 1991
COLO. OIL & GAS CONS. COM.



2800
 Cement
 across "P"
 Pierre "B" will send
 samples