

For (Nc)



UNITED STATES DEPARTMENT OF THE INTERIOR BUREAU OF LAND MANAGEMENT

SUBMIT IN DUPLICATE*

(See other instructions on reverse side)

Form approved. Budget Bureau No. 1004-0137 Expires August 31, 1985

5. LEASE DESIGNATION AND SERIAL NO.

D-028961

6. IF INDIAN, ALLOTTEE OR TRIBE NAME

7. UNIT AGREEMENT NAME

McCallum Unit

8. FARM OR LEASE NAME

9. WELL NO.

126

10. FIELD AND POOL, OR WILDCAT

McCallum/Pierre "B"

11. SEC., T., R., M., OR BLOCK AND SURVEY OR AREA

Sec. 1, T9N, R79W, 6th P.M.

12. COUNTY OR PARISH

Jackson

13. STATE

CO

WELL COMPLETION OR RECOMPLETION REPORT AND LOG *

1a. TYPE OF WELL: OIL WELL [X] GAS WELL [] DRY [X] Other []

b. TYPE OF COMPLETION: NEW WELL [] WORK OVER [X] DEEP-EN [] PLUG BACK [] DIFF. RESVR. [] Other []

2. NAME OF OPERATOR CONOCO INC.

3. ADDRESS OF OPERATOR 851 WERNER COURT, CASPER, WY 82601

4. LOCATION OF WELL (Report location clearly and in accordance with any State requirements)*

At surface 167' FSL, 67' FWL, (SW/SW) At top prod. interval reported below Same At total depth Same

14. PERMIT NO. 05-057-06356 DATE ISSUED 06/19/90

12. COUNTY OR PARISH JACKSON 13. STATE CO

15. DATE SPUDDED 10/10/90 16. DATE T.D. REACHED 10/18/90 17. DATE COMPL. (Ready to prod.) 10/18/90 18. ELEVATIONS (DF, RKB, RT, GR, ETC.)* 8,228' GR, 8,235' KB 19. ELEV. CASINGHEAD

20. TOTAL DEPTH, MD & TVD 664' 21. PLUG, BACK T.D., MD & TVD Surface 22. IF MULTIPLE COMPL., HOW MANY* 23. INTERVALS DRILLED BY 24. PRODUCING INTERVAL(S), OF THIS COMPLETION—TOP, BOTTOM, NAME (MD AND TVD)* Pierre "B" - P&A 25. WAS DIRECTIONAL SURVEY MADE No

26. TYPE ELECTRIC AND OTHER LOGS RUN None 27. WAS WELL CORED No

28. CASING RECORD (Report all strings set in well)

Table with 6 columns: CASING SIZE, WEIGHT, LB./FT., DEPTH SET (MD), HOLE SIZE, CEMENTING RECORD, AMOUNT PULLED. Row 1: 8-5/8", 24#, 176', 12-1/4", 110 sks Class "G"

29. LINER RECORD and 30. TUBING RECORD tables. LINER RECORD columns: SIZE, TOP (MD), BOTTOM (MD), SACKS CEMENT*, SCREEN (MD). TUBING RECORD columns: SIZE, DEPTH SET (MD), PACKER SET (MD). None

31. PERFORATION RECORD (Interval, size and number) N/A 32. ACID, SHOT, FRACTURE, CEMENT SQUEEZE, ETC. Table with columns: DEPTH INTERVAL (MD), AMOUNT AND KIND OF MATERIAL USED

RECEIVED JAN 25 1991

33.* COLO. OIL & GAS CONS. COMM. PRODUCTION DATE FIRST PRODUCTION N/A PRODUCTION METHOD (Flowing, gas lift, pumping—size and type of pump) WELL STATUS (Producing or shut-in)

Table with columns: DATE OF TEST, HOURS TESTED, CHOKE SIZE, PROD'N. FOR TEST PERIOD, OIL—BBL., GAS—MCF., WATER—BBL., GAS-OIL RATIO, FLOW, TUBING PRESS., CASING PRESSURE, CALCULATED 24-HOUR RATE, OIL—BBL., GAS—MCF., WATER—BBL., OIL GRAVITY-API (CORR.)

34. DISPOSITION OF GAS (Sold, used for fuel, vented, etc.) TEST WITNESSED BY

35. LIST OF ATTACHMENTS Note: Well was plugged with 130 sks "G" and 35 sks lite from T.D. to surface.

36. I hereby certify that the foregoing and attached information is complete and correct as determined from all available records

SIGNED [Signature] TITLE Administrative Supervisor DATE 01/09/91

BLM-CRAIG(3); COGCC(2); AFF 473; ADN (See instructions and spaces for Additional Data on Reverse Side)

Title 18 U.S.C. Section 1001, makes it a crime for any person knowingly and willfully to make to any department or agency of the United States any false, fictitious or fraudulent statements or representations as to any matter within its jurisdiction.

Vertical stamp with initials SP, RK and other markings.

2-12-91

37. SUMMARY OF POROUS ZONES: (Show all important zones of porosity and contents thereof; cored intervals; and all drill-stem, tests, including depth interval tested, cushion used, time tool open, flowing and shut-in pressures, and recoveries):

38.

GEOLOGIC MARKERS

FORMATION	TOP	BOTTOM	DESCRIPTION, CONTENTS, ETC.	NAME	TOP	
					MEAS. DEPTH	TRUE VERT. DEPTH
				Pierre "B"	580'	

MINCO 21002A03.8.110.0100

1991 5 2 1061

RECEIVED



10-POINT PLAN

1. Geological Surface Formation: Pierre "A"

2. Geological Marker Tops:

<u>Formation</u>	<u>Drilled Depth</u>
Pierre "A"	Surface
Pierre "B"	580'
T.D.	660'

3. Depths at which water, oil, gas or other mineral bearing formations are expected to be encountered:

<u>Formation</u>	<u>Est. Top</u>
Pierre "B"	580', oil and water

4. Proposed Casing Program (all new):

<u>Depth</u>	<u>Size</u>	<u>Weight</u>	<u>Type</u>	<u>Cement</u>
0' - 150'	8-5/8"	24#	K-55, STC	Estimated 60 cu.ft.
0' - T.D.	5-1/2"	15.5#	J-55, STC	Estimated 114 cu.ft.

Minimum design factors for tension, collapse and burst are: 2.0 coupling and 1.5 body; 1.0; and 1.0, respectively.

Centralizers:

Surface Casing - Set at 60' intervals up from shoe (4 total).
Production Casing - Set at 90' intervals up from shoe (8 total).

5. Operator's Specifications for Pressure Control Equipment:

- Minimum working pressure on rams and BOPE will be 2,000 psi.
- Function test and visual inspection of the BOP stack will be conducted daily and noted in the Daily Drilling Report.
- Both high and low pressure tests of the BOP stack will be conducted weekly and any time flange seals are broken for repair or service.

5. Operator's Specifications for Pressure Control Equipment - (Continued)

- d. Ram type preventors and related control equipment will be pressure tested to 70% of their rated working pressure for a period of 10 minutes.
- e. An accumulator system and hydraulic controls (main and back-up controls) will be required with one set located at the accumulator and another on the drilling floor.
- f. All production casing strings will be pressure tested to .22 psi/ft. of setting depth or 1,500 psi (whichever is greater) after cementing and prior to drill-out.
- g. Surface casing cement must be circulated to surface. If there are inadequate cement returns, surface casing will be cemented from the surface with 1" pipe.

6. Proposed Circulating Medium:

<u>Depth</u>	<u>Mud Type</u>	<u>Density (lb/gal)</u>	<u>Funnel Viscosity (Sec/Ot)</u>	<u>Water Loss</u>
0'-150'	Native/ Fresh Water	- -	- -	- -
150'-T.D.	Gelled 2% KCL Water	8.6 - 9.6	30 - 50	< 200 cc

The mud system on the rig will be monitored by professional mud engineers who will monitor mud weight, viscosity, and physical make-up of the drilling mud.

7. Auxiliary Equipment:

- a. Kelly Cock - Yes
- b. Floats at Bit - Yes
- c. Monitoring equipment on the mud system - Visually
- d. Full opening safety valve on rig floor - Yes

8. Testing, Logging and Coring:

- a. Cores - None.
- b. DST - None
- c. Logging - IES/SP/FDC/GR/Cal
- d. Formation and Completion Interval - Pierre "B"
- e. Sand Fracturing - Unknown; will submit Form 3160-3 for approval if necessary.
- f. Samples - 10' samples from 150' to T.D.

ATTACHMENT TO FORM 3160-3
10-POINT PLAN
MCCALLUM UNIT NO. 126
JUNE 11, 1990
PAGE THREE

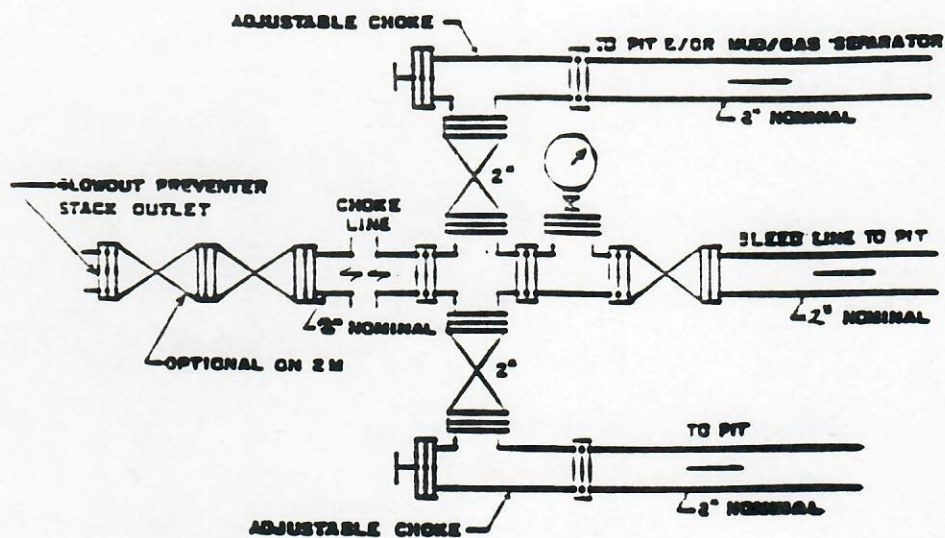
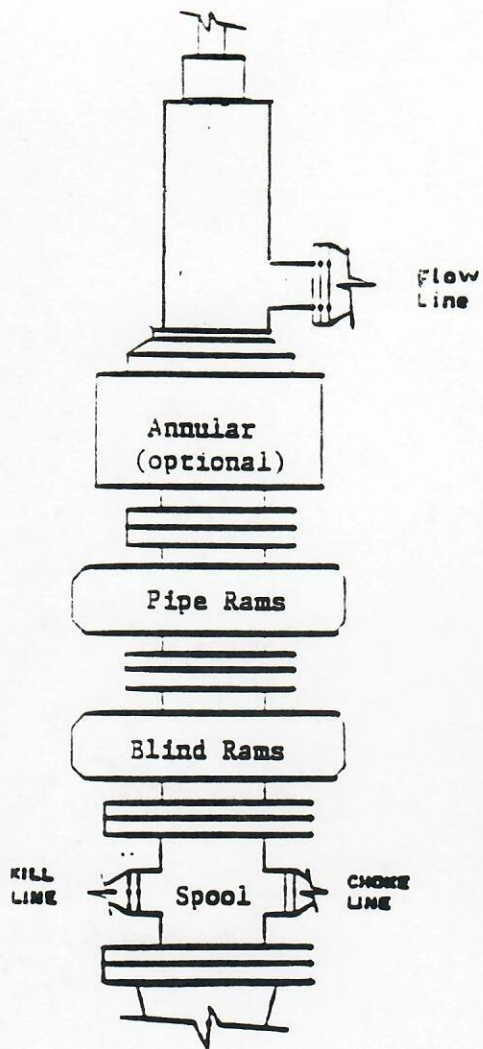
9. Abnormal Pressures or Temperatures; Potential Hazards:

Estimated BHP is 290 psi and estimated BHT is 60 degrees. No abnormal pressures or temperatures are anticipated.

10. Anticipated Starting Date and Duration:

June 25, 1990 - 3 days

**BOP SCHEMATIC
INCLUDING AIR DRILLING COMPONENTS**



DOUBLE RAM TYPE PREVENTERS WITH ROTATING HEAD

Minimum BOP Stack	2000 psi Working Pressure
One Pipe Ram	2000 psi Working Pressure
One Blind Ram	2000 psi Working Pressure
One Annular	2000 psi Working Pressure (optional)
Well Head	2000 psi Working Pressure
Manifold	2000 psi Working Pressure
Rotating Head	500 psi Working Pressure

13-Point Surface Use Plan

1. Existing Roads

- a. Proposed well site - 167' FSL, 67' FWL, (SW/SW), Section 1, T9N, R79W, Jackson County, Colorado (See Exhibits I, II and III).
- b. Route and distance from nearest town or locatable reference point - 7 miles from Walden, Colorado (See Exhibit II).
- c. Access road - (See Exhibit II).
- d. Exploratory well - All existing roads within a three-mile radius - Not applicable.
- e. Development well - All roads within a one-mile radius (See Exhibit II).
- f. Plans for improvement and/or maintenance of existing roads - Existing roads will be maintained in good or improved condition.
- g. Traffic control measures will be used during the drilling operation on both existing roads and planned access roads.

2. Planned Access Roads

- a. Width - Approximately 12' travel surface (See Exhibits II and III).
- b. Maximum grades - As currently exists (See Exhibit III).
- c. Turnouts - If any, will be constructed in accordance with the BLM/USGS Oil & Gas brochure.
- d. Drainage design - Prior to construction of the access road, all surface vegetation and the top 6" of soil will be removed and windrowed or stockpiled at one side of the road construction area.
- e. Location and size of culverts and major cuts and fills - No culverts will be required (See Exhibit III).
- f. Surfacing material - Gravel.

- g. Gates and fence cuts - None
- h. Existing and new access roads will be maintained in good or improved condition. They will be upgraded and maintained as necessary to prevent soil erosion and accommodate year round traffic.
- i. All equipment and vehicles will be confined to the access road, pad, and area specified in this APD.

3. Location of Existing Wells Within One Mile

- a. Water wells - See Exhibit V.
- b. Abandoned wells - See Exhibit V.
- c. Temporarily abandoned wells - See Exhibit V.
- d. Disposal wells - See Exhibit V.
- e. Drilling wells - See Exhibit V.
- f. Producing wells - See Exhibit V.
- g. Shut-in wells - See Exhibit V.
- h. Injection wells - See Exhibit V.
- i. Monitoring or observation wells for other resources - None

4. Location of Existing and/or Proposed Facilities

- a. Facilities and lines within a one-mile radius of location -
 - (1) Tank batteries - (See Exhibit II)
 - (2) Production facilities - (See Exhibit II).
 - (3) Oil gathering lines - (See Exhibit II)
 - (4) Gas gathering lines - None
 - (5) Injection lines - None
 - (6) Disposal lines - None
- b. Proposed production facilities - The existing battery will be utilized. Production facilities (including dikes), if any are constructed, will be placed on the cut portion of the location and a minimum of 10 feet from the toe of the back cut.

- c. All permanent above-the-ground structures, tank batteries, etc. that will remain longer than six months will be painted Desert Brown (Munsell standard color No. 10YR 6/3). The exception being that Wyoming Occupation Health and Safety Act Rules and Regulations are to be complied with where special safety colors are required.
- d. Produced hydrocarbons will be put in a test tank on location during completion work. Produced water will be put in the reserve pit during completion work per NTL-2B.
- e. Graders will be used whenever possible to construct or clear the pipeline right-of-way to the new or existing production facilities. The right-of-way will not be cleared more than 30 feet wide (preferably 6 feet wide on the soil stockpile side and 24 feet wide on the working side of the trench) without approval. Bladed materials will be placed back into the cleared route once construction is completed.
- f. Pipeline construction will not block or change the natural course of any drainage. Suspended pipelines shall provide adequate clearance for maximum runoff.
- g. All slopes which exceed 8% grade will be water barred per pages 29-32 of the "Surface Operating Standards for Oil and Gas Exploration and Development" pamphlet.
- h. Pipeline trenches will be maintained in order to correct settlement and erosion.

5. Location and Type of Water Supply

- a. Fresh water from the Canadian River will be hauled to the location from an existing tank at the Pierre "B" battery. Presently there is an existing pump and flowline to transfer water to the tank for battery use.
- b. Water wells to be drilled on lease - None

6. Source of Construction Material

- a. All material required for construction purposes will be available at drilling site. Sand and gravel, if any should be required, will be obtained from a pit located in the McCallum Unit.

7. Methods of Handling Water and Waste Disposal

- a. Cuttings - Into reserve pit.
- b. Drilling fluids - Into reserve pit.
- c. Sewage - Self-contained, chemically treated porta-potty or bore hole will be on location. Any sewage left on location will be buried at least six feet deep upon well completion.
- d. Trash Bin - The trash bin will be covered and enclosed on four sides and 3/4 of the top will be covered with small mesh wire to prevent trash from being carried or blown off site. After the trash bin is no longer needed, the trash will be transported off-site and placed in the county waste site. No trash will be placed in the reserve pit.
- e. Reserve pit - The reserve pit will be fenced on three sides during drilling and the fourth side at the time the rig is removed. Fluids collected in the reserve pit will be hauled to the Pierre "B" battery for disposal.

8. Ancillary Facilities

- a. Camp-On location - Two trailers will be provided; one for the Conoco Drilling Foreman and the other for the drilling crew.

9. Well Site Layout

- a. Cross sections of drill site with cuts and fills (See Exhibits III through IV).
- b. Location of mud tanks, reserve and trash pits, pipe racks, and soil material stockpiles (See Exhibit III).
- c. Rig orientation, parking areas and access roads (See Exhibits III).
- d. Pits - Unlined (See Exhibit III).
- e. All equipment and vehicles will be confined to the access road, pad and area specified in this APD.

10. Plans for Restoration of Surface

- a. Pits will be backfilled and the location levelled to conform to the original contour of the land.
- b. Revegetation and rehabilitation - The location and the flowline right-of-way will be recontoured and seeded with 10 lbs/acre of the following seed type:

<u>Species</u>	<u>Purity</u>	<u>Germ</u>
Whtg - Crusted	30.65	53
Brome - Smooth	24.06	93
Whtg - Slender	14.63	90
Ryegrass	14.88	96
Whtg - Western	4.02	91

- c. Rehabilitation will commence during completion operations. First revegetation will be started within six months of completing the well. The Area Manager, Bureau of Land Management, Kremmling, will be contacted if there are any questions concerning the rehabilitation stipulations at (303) 724-3437.
- d. Oil on pit - If oil is on the pit, it will be removed and hauled by truck to the Pierre "B" battery.
- e. A Notice of Intent to Abandon and a Subsequent Report of Abandonment will be submitted for abandonment approval.

11. Other Information

- a. If any cultural values are observed during construction and operations, leave them intact and notify the Area Manager, Bureau of Land Management, Kremmling, Colorado, 80454, at (303) 724-3437.
- b. The holder of this authorization shall immediately bring any paleontological resources or fossils discovered as a result of operations under this authorization to the attention of the authorized officer. The holder shall suspend construction activities in the vicinity of such discovery until notified to proceed by the authorized officer. The authorized office will evaluate, or will have evaluated, such discoveries not later than 5 working days after being notified, and will determine what action shall be taken with respect to such discoveries. The decision as to the appropriate measures to mitigate adverse effects to significant paleontological resources will be made by the authorized officer after consulting with the holder. The holder may be responsible for the cost of any investigations necessary for the evaluation, and for any mitigative measures.

- c. There will be no drilling between December 16 and April 15 for the protection of deer wintering areas.
- d. Landowner: Bureau of Land Management

6-11-90
Date

P.R. DeFoe
Operator Representative
(WY-06-3160-23)

12. Operator's Representative

- a. Responsible for all aspects of this plan:

Mr. Pat R. DeFoe
Production Superintendent
Conoco Inc.
851 Werner Court
Casper, Wyoming 82601

(307) 261-7800

13. Certification

I hereby certify that I, or persons under my direct supervision, have inspected the proposed drill site and access route; that I am familiar with the conditions which presently exist; that the statements made in this plan are, to the best of my knowledge, true and correct; and, that other work associated with the operations proposed herein will be performed by Conoco Inc. and its contractors and sub-contractors in conformity with this plan and the terms and conditions under which it is approved.

This statement is subject to the provisions of 18.U.S.C. 1001 for the filing of a false statement.

6-11-90
Date

P.R. DeFoe
Pat R. DeFoe - Conoco Inc.

6-12-90
Date

Bob L. Gibson
Bob L. Gibson - Conoco Inc.

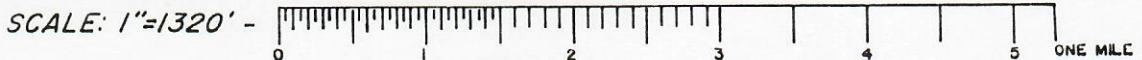
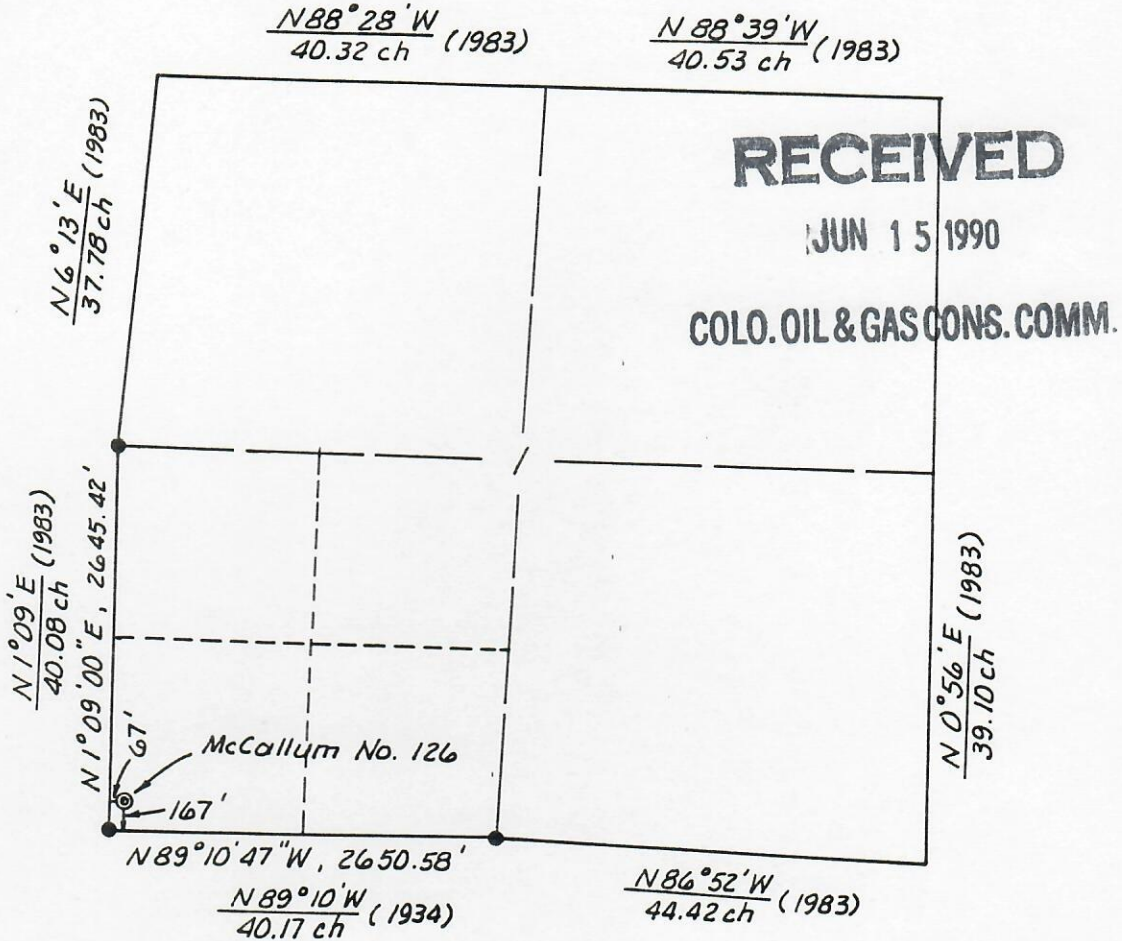
WELL LOCATION PLAT

Conoco, Inc. McCallum Well No. 126
 Located in the SW/4, SW/4, Section 1, T 9 N, R 79 W, 6th P.M.
 Jackson County, Colorado



NOTE: Basis of bearing is an assumed bearing of N 1°09'E on the west line of the SW/4 of the section.

● = Found brass cap survey monument

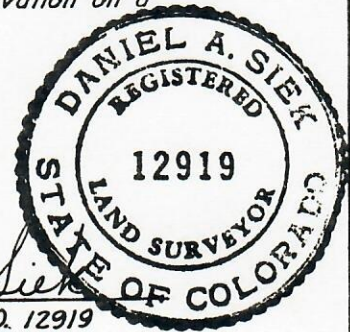


I, Daniel A. Siek, of Casper, Wyoming, do hereby certify that in accordance with a request from Martin Martinez of Casper, Wy., for Conoco, Inc. I made a survey on May 9, 1990, for location and elevation of the above well. As shown on the above map, the wellsite is in the SW/4, SW/4, of Section 1, Township 9 North, Range 79 West of the 6th Principal Meridian, Jackson County, Colorado. The elevation is 8228 feet, ungraded ground. Elevation datum is a spot elevation on a U.S.G.S. Topo map.

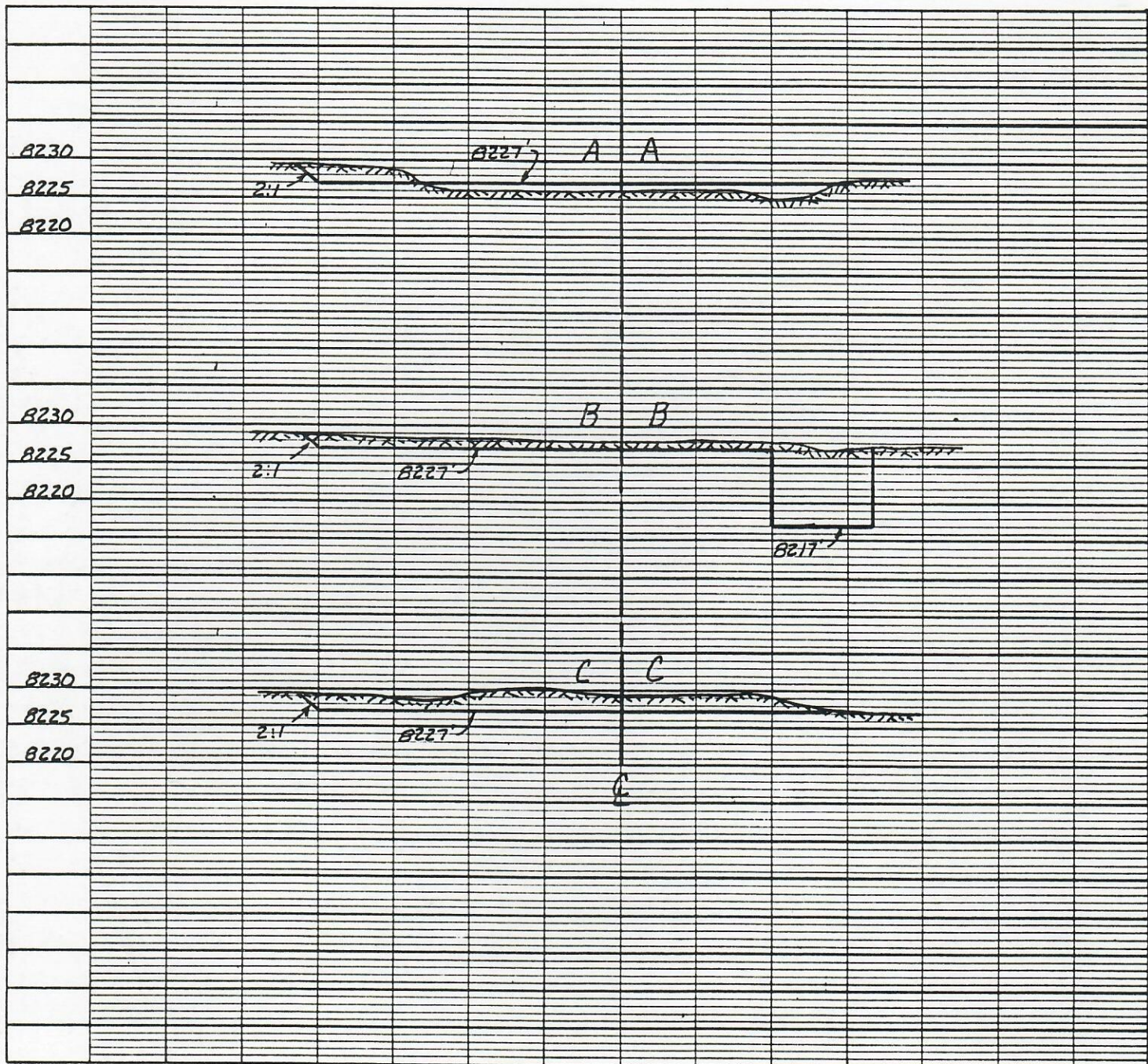
- REFERENCE POINT 200' North, elevation = 8226.5 feet.
- REFERENCE POINT 200' South, elevation = 8229.2 feet.
- REFERENCE POINT 200' East, elevation = 8225.4 feet.
- REFERENCE POINT 200' West, elevation = 8228.7 feet.

EXHIBIT I

Daniel A. Siek
 COLORADO R.L.S. NO. 12919



Conoco, Inc. McCallum No. 126
 Located in the SW/4, SW/4, Section 1, T9 N, R79 W, 6th P.M.
 Jackson County, Colorado



CROSS-SECTION OF LAYDOWN DIRECTION AND RESERVE PIT
 HORIZONTAL SCALE: 1" = 30', VERTICAL SCALE: 1" = 20'

EXHIBIT IV

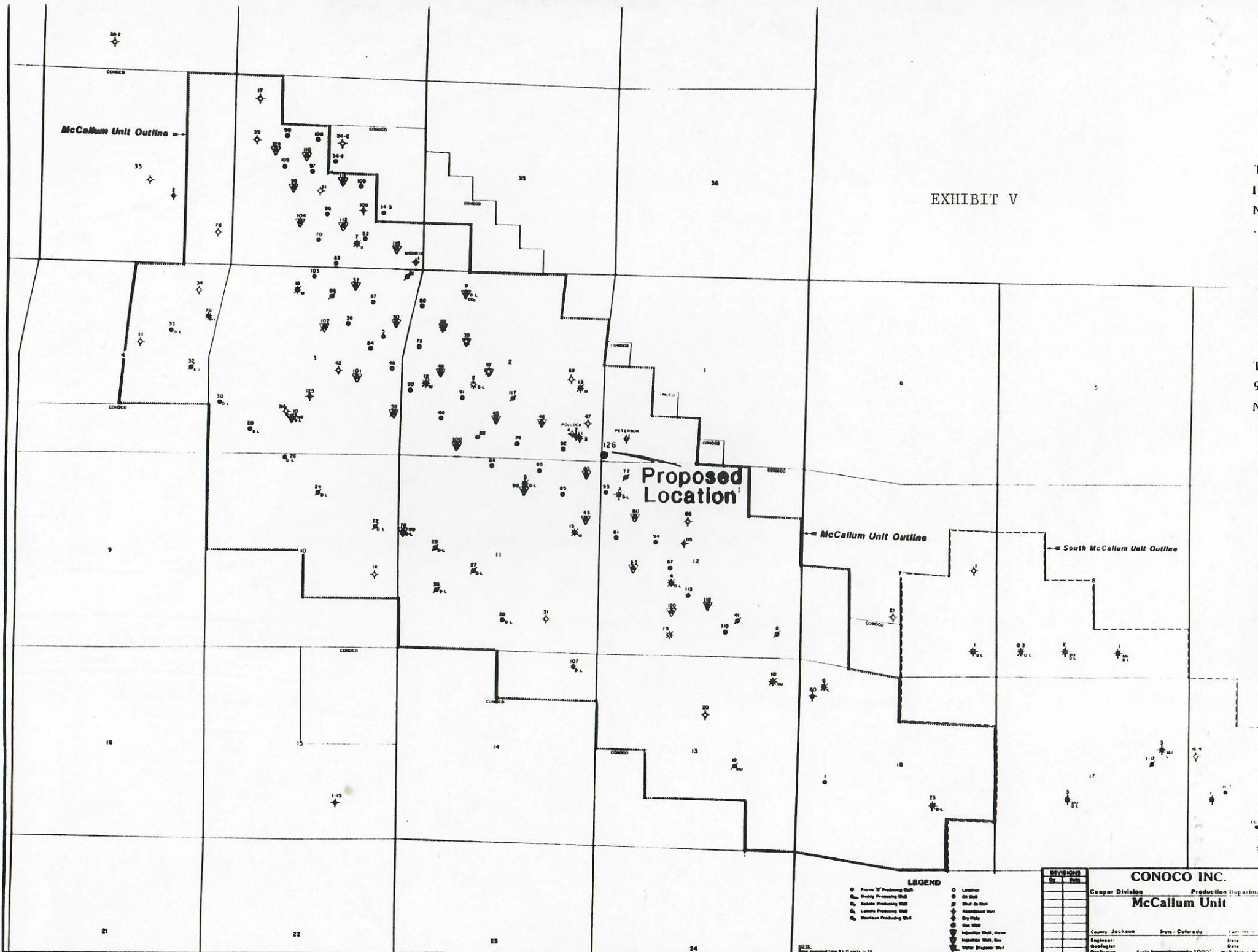
PREPARED BY
 SIEK SURVEYING SERVICE
 P.O. BOX 1765, CASPER, WYOMING, 82602
 PHONE (307) 266-6829
 DATE: 5/10/90 JOB NO. 57-90

SHEET 2 OF 2

EXHIBIT V

T
10
N.

T
9
N.



- LEGEND**
- Probe W' Producing Well
 - Probe W' Producing Well
 - Shaly Producing Well
 - Shaly Producing Well
 - Lentic Producing Well
 - Lentic Producing Well
 - Non-Producing Well
 - Non-Producing Well
 - Water Well
 - Water Well
 - Oil Well
 - Oil Well
 - Gas Well
 - Gas Well
 - Steam Well
 - Steam Well
 - Water Well, Other
 - Water Well, Other

REVISIONS	
By	Date

CONOCO INC.
Casper Division Production Department
McCallum Unit

County: Jackson State: Colorado Date: 1951
 Engineer: Date: 1951
 Geologist: Date: 1951
 Draftsman: Date: 1951

Scale: 1" = 1000'

1022
 Map prepared from S.L.O. 10211-11-78