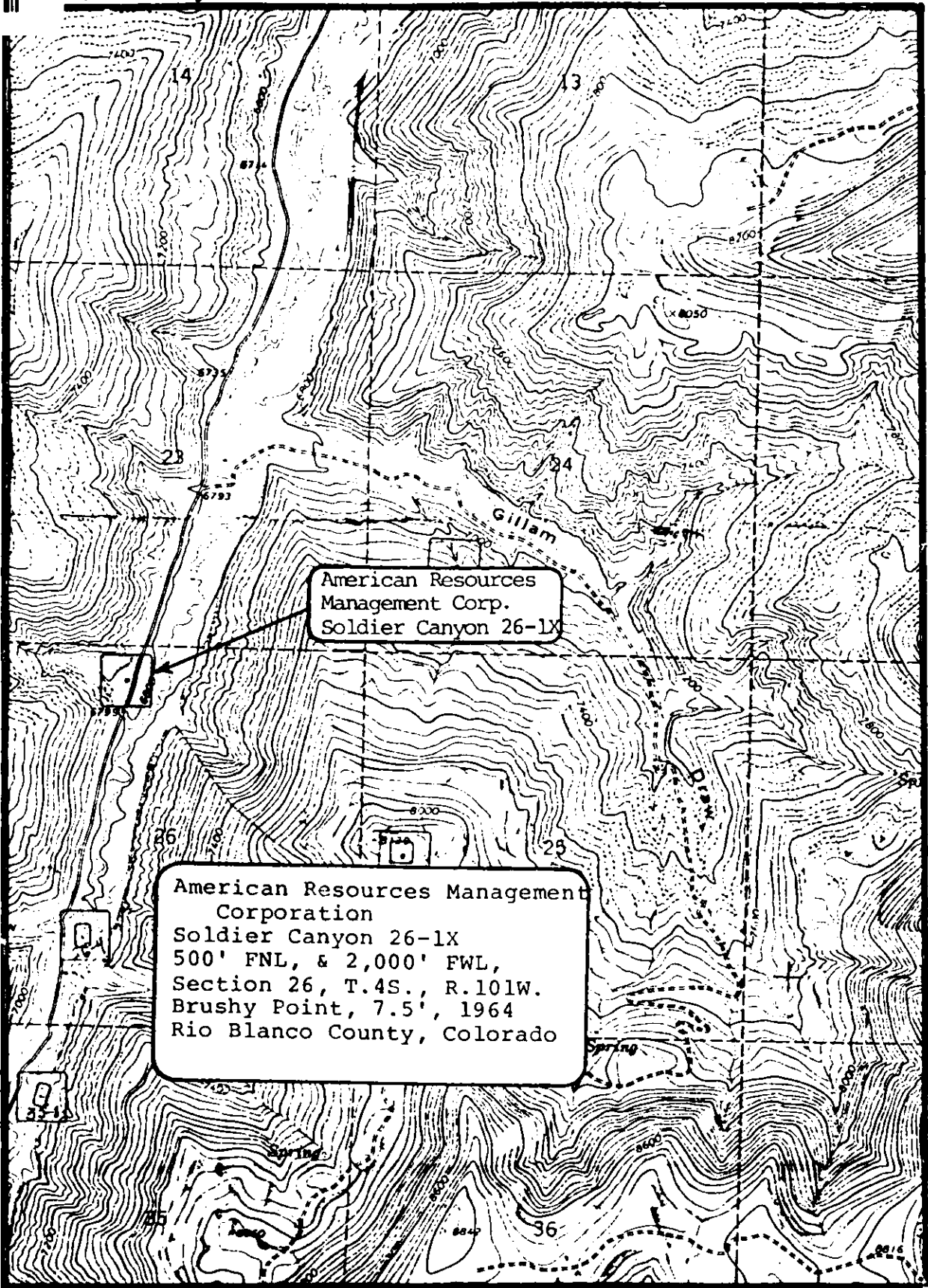




01735491

103-C9150



American Resources  
Management Corp.  
Soldier Canyon 26-1X

American Resources Management  
Corporation  
Soldier Canyon 26-1X  
500' FNL, & 2,000' FWL,  
Section 26, T.4S., R.101W.  
Brushy Point, 7.5', 1964  
Rio Blanco County, Colorado

