

SITE ASSESSMENT REPORT
RITCHEY 1-27 1 WELLHEAD & FLOWLINE

ECMC REMEDIATION # 39449

Prepared for:

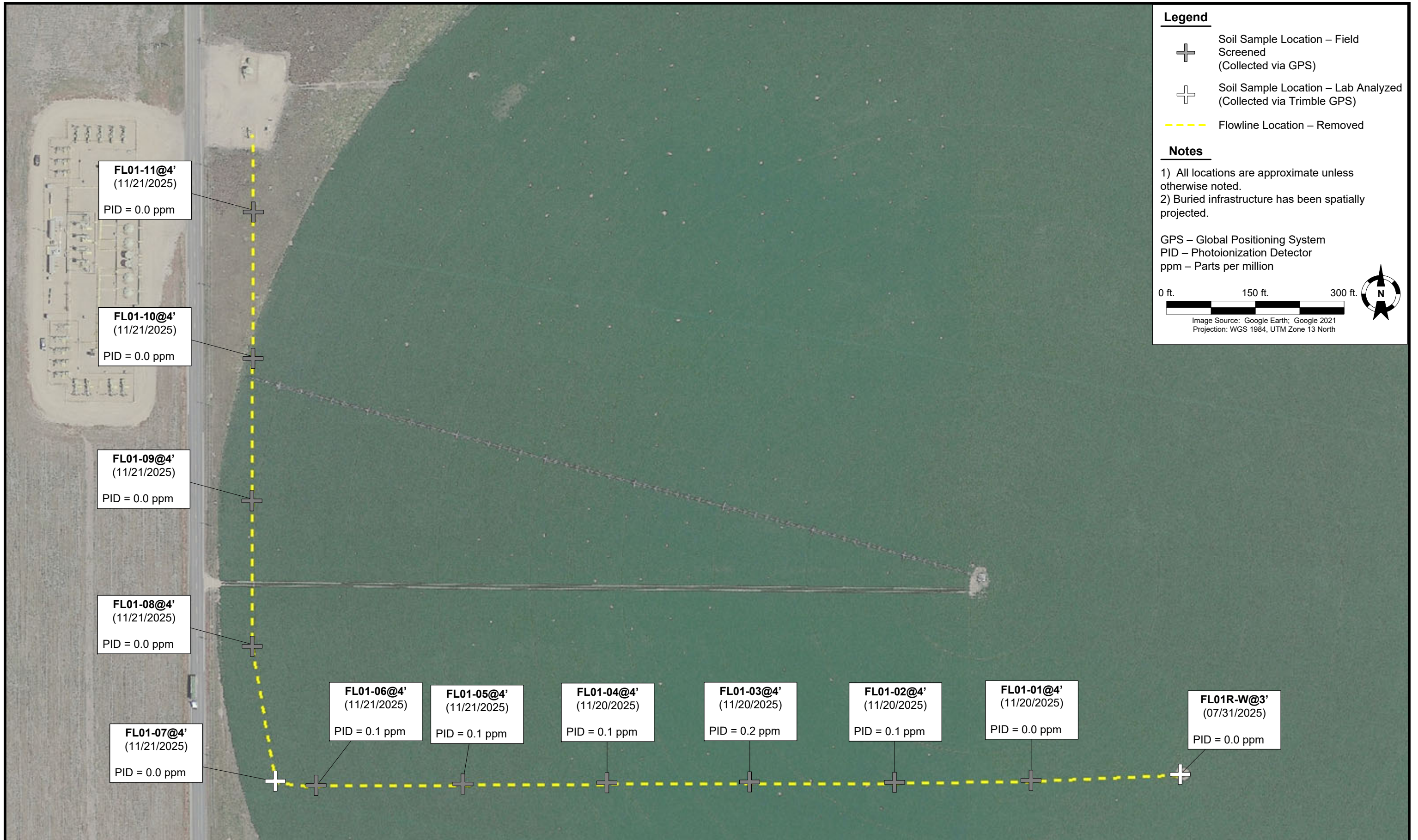


1099 18th Street
Suite 1500
Denver, CO 80202

Prepared by:



4725 Independence Street
Wheat Ridge, CO 80033



DATE: January 22, 2026

DESIGNED BY: J. Whritenour

DRAWN BY: A. Haug



Noble Energy, Inc – 100322 – DJ Basin
RITCHEY 1-27 1 Flowline
 SENW, Section 27, Township 3 North, Range 65 West
 Weld County, Colorado

SOIL SAMPLE LOCATION MAP
 (07/31/2025 – 11/21/2025)

FIGURE 1



DATE: January 22, 2026

DESIGNED BY: J. Whritenour

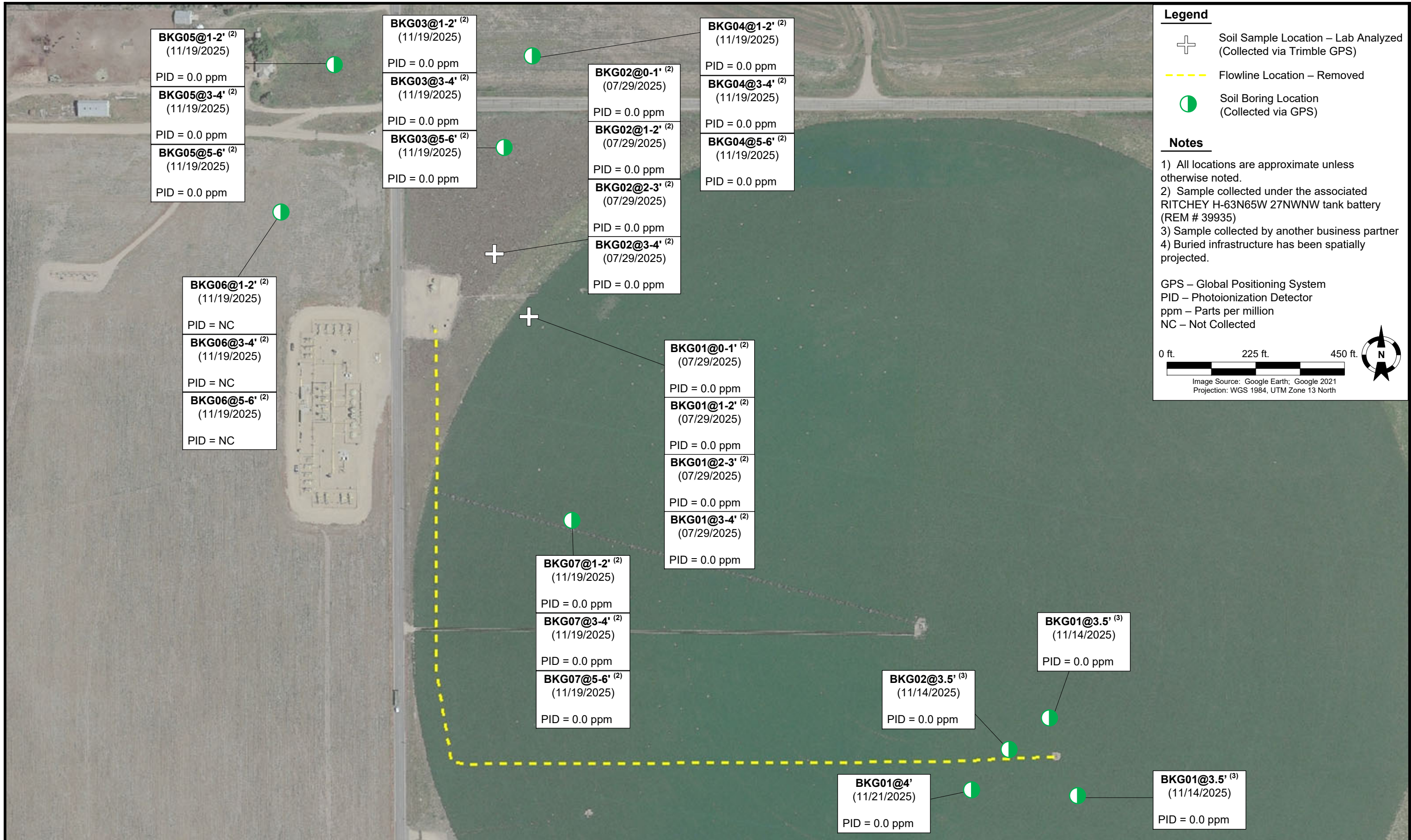
DRAWN BY: A. Haug



Noble Energy, Inc – 100322 – DJ Basin
RITCHEY 1-27 1 Flowline
 SENW, Section 27, Township 3 North, Range 65 West
 Weld County, Colorado

SOIL SAMPLE LOCATION MAP
 (07/31/2025 & 11/14/2025)

FIGURE 2



Legend

- ⊕ Soil Sample Location – Lab Analyzed (Collected via Trimble GPS)
- Flowline Location – Removed
- Soil Boring Location (Collected via GPS)

Notes

- 1) All locations are approximate unless otherwise noted.
- 2) Sample collected under the associated RITCHEY H-63N65W 27NWNW tank battery (REM # 39935)
- 3) Sample collected by another business partner
- 4) Buried infrastructure has been spatially projected.

GPS – Global Positioning System
 PID – Photoionization Detector
 ppm – Parts per million
 NC – Not Collected

0 ft. 225 ft. 450 ft.

Image Source: Google Earth; Google 2021
 Projection: WGS 1984, UTM Zone 13 North

DATE: January 23, 2026

DESIGNED BY: J. Whritenour

DRAWN BY: A. Haug



Tasman, Inc.
 4725 Independence Street
 Wheat Ridge, CO 80033

Noble Energy, Inc – 100322 – DJ Basin
RITCHEY 1-27 1 Flowline
 SENW, Section 27, Township 3 North, Range 65 West
 Weld County, Colorado

SOIL SAMPLE LOCATION MAP
 (07/29/2025 – 11/21/2025)

FIGURE 3

TABLE 1
FIELD DATA SUMMARY TABLE
NOBLE ENERGY, INC. - 100322
RITCHEY 1-27 1 WELLHEAD AND FLOWLINE, WELD COUNTY, COLORADO
REM # 39449



Sample ID	Sample Date	Depth (ft. bgs)	GPS Data ¹ Latitude/Longitude		PDOP Value	VOC Concentration ² (ppm)
FL01R-W@3'	07/31/2025	3	40.199126	-104.653315	1.1	0.0
WH01@4' ^[4]	11/14/2025	4	40.199139	-104.653304	0.9	0.8
WH01-N@3' ^[4]	11/14/2025	3	40.199153	-104.653305	1.1	1.3
WH01-E@3' ^[4]	11/14/2025	3	40.199140	-104.653288	1.0	0.7
WH01-S@3' ^[4]	11/14/2025	3	40.199128	-104.653304	0.9	0.7
WH01-W@3' ^[4]	11/14/2025	3	40.199137	-104.653327	1.0	1.5
FL01-01@4'	11/20/2025	4	40.199097	-104.654214	1.0	0.0
FL01-02@4'	11/20/2025	4	40.199092	-104.655040	0.8	0.1
FL01-03@4'	11/20/2025	4	40.199094	-104.655920	0.7	0.2
FL01-04@4'	11/20/2025	4	40.199095	-104.656782	0.7	0.1
FL01-05@4'	11/21/2025	4	40.199091	-104.657656	1.2	0.1
FL01-06@4'	11/21/2025	4	40.199089	-104.658544	1.2	0.1
FL01-07@4'	11/21/2025	4	40.199113	-104.658794	0.9	0.0
FL01-08@4'	11/21/2025	4	40.199737	-104.658928	1.0	0.1
FL01-09@4'	11/21/2025	4	40.200411	-104.658922	1.0	0.0
FL01-10@4'	11/21/2025	4	40.201075	-104.658915	1.0	0.0
FL01-11@4'	11/21/2025	4	40.201753	-104.658913	1.0	0.0
BKG01@0-1 ^[3]	07/29/2025	0-1	40.202191	-104.658059	1.0	0.0
BKG01@1-2' ^[3]	07/29/2025	1-2	40.202191	-104.658059	1.0	0.0
BKG01@2-3' ^[3]	07/29/2025	2-3	40.202191	-104.658059	1.0	0.0
BKG01@3-4' ^[3]	07/29/2025	3-4	40.202191	-104.658059	1.0	0.0
BKG02@0-1 ^[3]	07/29/2025	0-1	40.202638	-104.658378	1.0	0.0
BKG02@1-2' ^[3]	07/29/2025	1-2	40.202638	-104.658378	1.0	0.0
BKG02@2-3' ^[3]	07/29/2025	2-3	40.202638	-104.658378	1.0	0.0
BKG02@3-4' ^[3]	07/29/2025	3-4	40.202638	-104.658378	1.0	0.0
BKG01@3.5' ^[4]	11/14/2025	3.5	40.199401	-104.653359	0.9	0.0
BKG02@3.5' ^[4]	11/14/2025	3.5	40.199172	-104.653729	0.9	0.0
BKG03@3.5' ^[4]	11/14/2025	3.5	40.198844	-104.653141	0.9	0.0
BKG03@1-2' ^[3]	11/19/2025	1-2	40.203377	-104.658290	0.9	0.0
BKG03@3-4' ^[3]	11/19/2025	3-4	40.203377	-104.658290	0.9	0.0
BKG03@5-6' ^[3]	11/19/2025	5-6	40.203377	-104.658290	0.9	0.0
BKG04@1-2' ^[3]	11/19/2025	1-2	40.204008	-104.658045	0.8	0.0
BKG04@3-4' ^[3]	11/19/2025	3-4	40.204008	-104.658045	0.8	0.0
BKG04@5-6' ^[3]	11/19/2025	5-6	40.204008	-104.658045	0.8	0.0
BKG05@1-2' ^[3]	11/19/2025	1-2	40.203959	-104.659819	0.8	0.0
BKG05@3-4' ^[3]	11/19/2025	3-4	40.203959	-104.659819	0.8	0.0
BKG05@5-6' ^[3]	11/19/2025	5-6	40.203959	-104.659819	0.8	0.0
BKG06@1-2' ^[3]	11/19/2025	1-2	40.202918	-104.660337	0.8	NC
BKG06@3-4' ^[3]	11/19/2025	3-4	40.202918	-104.660337	0.8	NC
BKG06@5-6' ^[3]	11/19/2025	5-6	40.202918	-104.660337	0.8	NC
BKG07@1-2' ^[3]	11/19/2025	1-2	40.200788	-104.657683	0.9	0.0
BKG07@3-4' ^[3]	11/19/2025	3-4	40.200788	-104.657683	0.9	0.0
BKG07@5-6' ^[3]	11/19/2025	5-6	40.200788	-104.657683	0.9	0.0
BKG01@4'	11/20/2025	4	40.198883	-104.654064	1.0	0.0

Notes:

1. Global Positioning System (GPS) data is provided in decimal degrees using North American Datum (NAD) 83 UTM Zone 13 North.
2. Volatile organic compound (VOC) concentrations are measured in the field using a photoionization detector (PID).
3. Sample collected during decommissioning of the associated RITCHEY H-63N65W 27NWNW tank battery (REM # 39935).
4. Sample collected by another business partner

PDOP = Position Dilution of Precision

ppm = Parts per million

ft. = Feet

bgs = Below ground surface

NC = Not collected

NA = Not analyzed

Source material characterization sample, excavated and transported off site for disposal.

Material excavated and transported off site for disposal.

TABLE 2
SUMMARY OF VOLATILE ORGANIC SOIL CHEMISTRY DATA
NOBLE ENERGY, INC. - 100322
RITCHEY 1-27 1 WELLHEAD AND FLOWLINE, WELD COUNTY, COLORADO
REM # 39449



Sample ID	Sample Date	Depth (ft. bgs)	Benzene (mg/kg)	Toluene (mg/kg)	Ethyl-Benzene (mg/kg)	Xylenes (mg/kg)	1,2,4-Trimethyl-Benzene (mg/kg)	1,3,5-Trimethyl-Benzene (mg/kg)	Naphthalene (mg/kg)	TPH (mg/kg)	TPH GRO (mg/kg)	TPH DRO (mg/kg)	TPH ORO (mg/kg)
ECMC Table 915-1 Limits (Residential SSL)			1.2	490	5.8	58	30	27	2	500	500**		
ECMC Table 915-1 Limits (Protection of Groundwater SSL)			0.0026	0.69	0.78	9.9	0.0081	0.0087	0.0038	500	500**		
FL01R-W@3'	07/31/2025	3	<0.0011	<0.0021	<0.0021	<0.0021	<0.0021	<0.0021	<0.0022	166.3	<0.21	48.3	118
WH01-W@3' ^[4]	11/14/2025	3	<0.0011	<0.0021	<0.0021	<0.0021	<0.0021	<0.0021	<0.0021	59.2	<0.21	19.2	40.0
FL01-07@4'	11/21/2025	4	<0.0011	<0.0022	<0.0022	<0.0022	<0.0022	<0.0022	<0.0022	<6.7	<0.22	<4.5	<6.7

Notes:

- 1. Bold** values exceed the ECMC Table 915-1 limit(s).
- Red & blue highlighted soil analytical values indicate an exceedance of the referenced soil screening level (SSL).
- ** Summation of GRO+DRO+ORO must be less than 500 mg/kg.
- Sample collected by another business partner

ECMC = Energy and Carbon Management Commission

(<) = Analytical result is less than the indicated laboratory reporting limit.

TPH-GRO = Total petroleum hydrocarbons - gasoline range organics

TPH-DRO = Total petroleum hydrocarbons - diesel range organics

TPH-ORO = Total petroleum hydrocarbons - oil range organics

mg/kg = Milligrams per kilogram

ft. = Feet

bgs = Below ground surface

NA = Not analyzed

Source material characterization sample, excavated and transported off site for disposal.

Material excavated and transported off site for disposal.

TABLE 3
SUMMARY OF POLYCYCLIC AROMATIC HYDROCARBON SOIL CHEMISTRY DATA
NOBLE ENERGY, INC. - 100322
RITCHEY 1-27 1 WELLHEAD AND FLOWLINE, WELD COUNTY, COLORADO
REM # 39449



Sample ID	Sample Date	Depth (ft. bgs)	Acenaphthene (mg/kg)	Anthracene (mg/kg)	Benzo (a) Anthracene (mg/kg)	Benzo (a) Pyrene (mg/kg)	Benzo (b) Fluoranthene (mg/kg)	Benzo (k) Fluoranthene (mg/kg)	Chrysene (mg/kg)	Dibenzo (a,h) Anthracene (mg/kg)	Fluoranthene (mg/kg)	Fluorene (mg/kg)	Indeno (1,2,3-cd) Pyrene (mg/kg)	Pyrene (mg/kg)	1-Methyl-Naphthalene (mg/kg)	2-Methyl-Naphthalene (mg/kg)
ECMC Table 915-1 Limits (Residential SSL)			360	1800	1.1	0.11	1.1	11	110	0.11	240	240	1.1	180	18	24
ECMC Table 915-1 Limits (Protection of Groundwater SSL)			0.55	5.8	0.011	0.24	0.3	2.9	9	0.096	8.9	0.54	0.98	1.3	0.006	0.019
FL01R-W@3'	07/31/2025	3	<0.0043	<0.0043	<0.0054	<0.0043	<0.0043	<0.0043	<0.0043	<0.0043	<0.0043	<0.0043	<0.0043	<0.0043	<0.0043	<0.0043
WH01-W@3' ^[4]	11/14/2025	3	<0.0042	<0.0042	<0.0052	<0.0042	<0.0042	<0.0042	<0.0042	<0.0042	<0.0042	<0.0042	<0.0042	<0.0042	<0.0042	<0.0042
FL01-07@4'	11/21/2025	4	<0.0044	<0.0044	<0.0055	<0.0044	<0.0044	<0.0044	<0.0044	<0.0044	<0.0044	<0.0044	<0.0044	<0.0044	<0.0044	<0.0044

Notes:

1. **Bold** values exceed the ECMC Table 915-1 limit(s).
2. Red & blue highlighted soil analytical values indicate an exceedance of the referenced soil screening level (SSL).
3. * Indicates laboratory minimum detection limit in excess of SSL.
4. Sample collected by another business partner

ECMC = Energy and Carbon Management Commission

(<) = Analytical result is less than the indicated laboratory reporting limit.

mg/kg = Milligrams per kilogram

ft. = Feet

bgs = Below ground surface

NA = Not analyzed

Source material characterization sample, excavated and transported off site for disposal.

Material excavated and transported off site for disposal.

TABLE 4
SUMMARY OF SOIL SUITABILITY FOR RECLAMATION
NOBLE ENERGY, INC. - 100322
RITCHEY 1-27 1 WELLHEAD AND FLOWLINE, WELD COUNTY, COLORADO
REM # 39449



Sample ID	Sample Date	Depth (ft. bgs)	pH (Standard Units)	EC (mmhos/cm)	SAR (Standard Units)	Boron (mg/L)
ECMC Table 915-1 Soil Suitability Limits			6 - 8.3	<4	<6	2
FL01R-W@3'	07/31/2025	3	7.52	1.4	5.51	<0.50
WH01-W@3' ^[6]	11/14/2025	3	7.90	2.2	4.44	<0.50
FL01-07@4'	11/21/2025	4	7.73	4.3	5.03	0.534
BKG01@0-1' ^[4]	07/29/2025	0-1	7.62	3.6	7.08	<0.50
BKG01@1-2' ^[4]	07/29/2025	1-2	7.18	2.5	6.73	<0.50
BKG01@2-3' ^[4]	07/29/2025	2-3	7.11	3.2	5.69	<0.50
BKG01@3-4' ^[4]	07/29/2025	3-4	7.87	2.3	7.00	<0.50
BKG02@0-1' ^[4]	07/29/2025	0-1	7.29	0.37	0.468	<0.50
BKG02@1-2' ^[4]	07/29/2025	1-2	7.48	2.5	6.32	0.593
BKG02@2-3' ^[4]	07/29/2025	2-3	7.25	2.0	7.27	0.660
BKG02@3-4' ^[4]	07/29/2025	3-4	7.74	5.1	6.91	0.568
BKG03@1-2' ^[4]	11/19/2025	1-2	7.88	0.56	0.616	0.705
BKG01@3.5' ^[6]	11/14/2025	3.5	8.07	1.5	4.39	<0.50
BKG02@3.5' ^[6,7]	11/14/2025	3.5	8.08	1.4	4.10	<0.50
BKG03@3.5' ^[6]	11/14/2025	3.5	7.96	1.5	4.21	<0.50
BKG03@3-4' ^[4]	11/19/2025	3-4	7.87	16.1	18.2	0.715
BKG03@5-6' ^[4]	11/19/2025	5-6	7.79	8.6	11.8	1.36
BKG04@1-2' ^[4]	11/19/2025	1-2	7.69	1.7	3.81	<0.50
BKG04@3-4' ^[4]	11/19/2025	3-4	7.86	2.7	4.39	<0.50
BKG04@5-6' ^[4]	11/19/2025	5-6	7.74	11.6	13.6	<0.50
BKG05@1-2' ^[4,5]	11/19/2025	1-2	7.92	2.8	4.17	<0.50
BKG05@3-4' ^[4,5]	11/19/2025	3-4	7.98	8.1	12.3	3.06
BKG05@5-6' ^[4,5]	11/19/2025	5-6	8.18	4.0	16.0	1.53
BKG06@1-2' ^[4]	11/19/2025	1-2	7.63	0.91	2.46	<0.50
BKG06@3-4' ^[4]	11/19/2025	3-4	7.78	3.6	7.46	<0.50
BKG06@5-6' ^[4]	11/19/2025	5-6	7.90	0.52	0.668	0.605
BKG07@1-2' ^[4]	11/19/2025	1-2	7.92	3.5	4.76	<0.50
BKG07@3-4' ^[4]	11/19/2025	3-4	7.91	5.5	9.19	<0.50
BKG07@5-6' ^[4]	11/19/2025	5-6	7.72	6.6	8.26	<0.50
BKG01@4'	11/21/2025	4	7.94	1.1	4.15	<0.50
Maximum Background Concentration			-	16.1	-	-

Notes:

- Bold** faced values exceed the ECMC Table 915-1 limit(s), but are within background concentrations.
- Bold** faced values exceed the ECMC Table 915-1 limit(s) and native background concentrations.
- Brown highlighted soil analytical values indicate a regulatory exceedance.
- Sample collected during decommissioning of the associated RITCHEY H-63N65W 27NWNW tank battery (REM # 39935).
- Sample omitted from maximum background concentration calculations due to proximity to a proposed or constructed line per COA on ECMC Doc #404350548
- Sample collected by another business partner
- Sample omitted from maximum background values due to proximity to former oil and gas operations

ECMC = Energy and Carbon Management Commission

(<) = Analytical result is less than the indicated laboratory reporting limit.

mg/L = Milligrams per liter

ft. = Feet

bgs = Below ground surface

NA = Not analyzed

EC = Electrical conductivity

SAR = Sodium adsorption ratio

mmhos/cm = Millimhos per centimeter

Source material characterization sample, excavated and transported off site for disposal.

Material excavated and transported off site for disposal.

TABLE 5
SUMMARY OF METALS IN SOIL CHEMISTRY DATA
NOBLE ENERGY, INC. - 100322
RITCHEY 1-27 1 WELLHEAD AND FLOWLINE, WELD COUNTY, COLORADO
REM # 39449



Sample ID	Sample Date	Depth (ft. bgs)	Arsenic (mg/kg)	Barium (mg/kg)	Cadmium (mg/kg)	Chromium (VI) ⁶ (mg/kg)	Copper (mg/kg)	Lead (mg/kg)	Nickel (mg/kg)	Selenium (mg/kg)	Silver (mg/kg)	Zinc (mg/kg)
ECMC Table 915-1 Limits (Residential SSL)			0.68	15000	71	0.3	3100	400	1500	390	390	23000
ECMC Table 915-1 Limits (Protection of Groundwater SSL)			0.29	82	0.38	0.00067	46	14	26	0.26	0.8	370
FL01R-W@3'	07/31/2025	3	1.5	44.8	0.34	<0.44	7.7	20.9	3.7	<0.22	<0.055	22.9
WH01-W@3' ^[9]	11/14/2025	3	1.6	48.9	0.25	0.57	9.0	17.9	3.7	<0.20	<0.099	23.4
FL01-07@4'	11/21/2025	4	1.8	62.0	0.11	<0.43	7.2	4.5	4.7	0.24	<0.10	20.3
BKG01@0-1' ^[7]	07/29/2025	0-1	1.7	42.9	<0.11	<0.43	3.6	3.7	3.5	<0.43	<0.11	13.0
BKG01@1-2' ^[7]	07/29/2025	1-2	1.3	41.8	<0.12	<0.45	3.7	3.6	3.9	<0.46	<0.12	13.6
BKG01@2-3' ^[7]	07/29/2025	2-3	1.5	47.9	<0.12	<0.47	4.2	4.0	4.4	<0.46	<0.12	16.8
BKG01@3-4' ^[7]	07/29/2025	3-4	1.4	46.0	<0.10	<0.45	4.2	4.1	4.5	<0.42	<0.10	16.0
BKG02@0-1' ^[7]	07/29/2025	0-1	1.5	43.1	<0.097	<0.40	4.1	4.5	5.0	<0.39	<0.097	15.0
BKG02@1-2' ^[7]	07/29/2025	1-2	2.3	66.8	<0.11	<0.45	5.5	6.1	6.6	<0.44	<0.11	24.6
BKG02@2-3' ^[7]	07/29/2025	2-3	2.0	62.7	<0.11	<0.43	5.2	5.7	6.8	<0.43	<0.11	23.0
BKG02@3-4' ^[7]	07/29/2025	3-4	1.8	56.6	<0.13	<0.54	3.5	3.5	4.6	<0.51	<0.13	13.7
BKG01@3.5' ^[9]	11/14/2025	3.5	1.6	46.5	<0.090	<0.43	3.6	4.2	4.1	<0.18	<0.090	15.6
BKG02@3.5' ^[9,10]	11/14/2025	3.5	1.7	55.6	<0.092	<0.43	4.3	4.2	4.0	<0.18	<0.092	15.8
BKG03@3.5' ^[9]	11/14/2025	3.5	1.3	38.1	<0.10	<0.42	2.9	3.4	3.0	<0.20	<0.10	12.6
BKG03@1-2' ^[7]	11/19/2025	1-2	2.9	91.6	0.13	<0.45	8.7	8.4	9.2	<0.21	<0.10	35.7
BKG03@3-4' ^[7]	11/19/2025	3-4	3.8	82.7	0.13	<0.43	5.5	5.8	7.3	0.32	<0.099	23.6
BKG03@5-6' ^[7]	11/19/2025	5-6	5.5	223	0.35	<0.48	15.5	14.4	15.9	<0.24	<0.12	57.6
BKG04@1-2' ^[7]	11/19/2025	1-2	1.9	148	0.10	<0.42	6.0	6.0	6.2	<0.19	<0.094	25.8
BKG04@3-4' ^[7]	11/19/2025	3-4	1.8	61.3	<0.093	<0.41	4.2	4.5	4.2	<0.19	<0.093	17.1
BKG04@5-6' ^[7]	11/19/2025	5-6	2.2	77.0	0.14	<0.43	5.7	5.4	5.6	<0.19	<0.096	23.3
BKG05@1-2' ^[7,8]	11/19/2025	1-2	3.2	114	0.097	<0.45	6.4	5.8	6.7	<0.19	<0.093	22.3
BKG05@3-4' ^[7,8]	11/19/2025	3-4	3.3	114	0.13	<0.44	7.1	9.6	11.4	0.21	<0.095	35.2
BKG05@5-6' ^[7,8]	11/19/2025	5-6	7.8	279	0.28	<0.48	12.9	10.6	13.9	0.29	<0.11	36.7
BKG06@1-2' ^[7]	11/19/2025	1-2	1.5	43.2	<0.095	<0.41	3.6	3.4	3.3	<0.19	<0.095	13.1
BKG06@3-4' ^[7]	11/19/2025	3-4	3.2	167	0.21	<0.44	7.1	6.9	8.3	<0.19	<0.096	27.5
BKG06@5-6' ^[7]	11/19/2025	5-6	3.3	84.1	0.12	<0.44	6.9	6.9	7.8	<0.20	<0.099	27.7

TABLE 5
SUMMARY OF METALS IN SOIL CHEMISTRY DATA
NOBLE ENERGY, INC. - 100322
RITCHEY 1-27 1 WELLHEAD AND FLOWLINE, WELD COUNTY, COLORADO
REM # 39449



Sample ID	Sample Date	Depth (ft. bgs)	Arsenic (mg/kg)	Barium (mg/kg)	Cadmium (mg/kg)	Chromium (VI) ⁶ (mg/kg)	Copper (mg/kg)	Lead (mg/kg)	Nickel (mg/kg)	Selenium (mg/kg)	Silver (mg/kg)	Zinc (mg/kg)
ECMC Table 915-1 Limits (Residential SSL)			0.68	15000	71	0.3	3100	400	1500	390	390	23000
ECMC Table 915-1 Limits (Protection of Groundwater SSL)			0.29	82	0.38	0.00067	46	14	26	0.26	0.8	370
BKG07@1-2' ^[7]	11/19/2025	1-2	2.2	60.3	0.12	<0.41	4.4	4.2	4.5	<0.20	<0.10	16.3
BKG07@3-4' ^[7]	11/19/2025	3-4	1.6	98.1	0.24	<0.47	6.3	5.1	6.0	0.23	<0.099	22.9
BKG07@5-6' ^[7]	11/19/2025	5-6	1.6	78.5	<0.10	<0.43	4.0	5.5	5.4	<0.20	<0.10	18.3
BKG01@4'	11/21/2025	4	1.8	51.5	<0.10	<0.42	6.2	3.8	4.4	<0.21	<0.10	14.6
1.25x Maximum Background Concentration			6.9	-	-	0.50	-	18.0	-	-	-	-

Notes:

1. **Bold** faced values exceed the ECMC Table 915-1 limit(s), but are within 1.25x background concentrations.
 2. **Red** faced values exceed the ECMC Table 915-1 limit(s) and native background concentrations.
 3. Red & blue highlighted soil analytical values indicate an exceedance of the referenced soil screening level (SSL).
 4. Reporting limit used for 1.25 multiplier when all background results for a specific metal are non-detect.
 5. * Indicates laboratory minimum detection limit in excess of SSL.
 6. Compound falls within the ECMC Table 915-1 footnote 9.
 7. Sample collected during decommissioning of the associated RITCHEY H-63N65W 27NWNW tank battery (REM # 39935).
 8. Sample omitted from maximum background concentration calculations due to proximity to a proposed or constructed line per COA on ECMC Doc #404350548
 9. Sample collected by another business partner
 10. Sample omitted from maximum background values due to proximity to former oil and gas operations
- Laboratory reporting limit used for 1.25x maximum background calculation for analytes with no detections
 ECMC = Energy & Carbon Management Commission
 (<) = Analytical result is less than the indicated laboratory reporting limit.
 mg/kg = Milligrams per kilogram
 ft. = Feet
 bgs = Below ground surface
 NA = Not analyzed

Source material characterization sample, excavated and transported off site for disposal.

Material excavated and transported off site for disposal.



CLIENT: Noble Energy		SITE NAME: Ritchey 1-27 1					DATE: 11/20/2025	REM. PROJECT #: 39449	WEATHER: Overcast, 40's	
SITE DIRECTIONS: CR 43 and CR 30. South 0.1 miles and east into.							JOB#: 10650			
LEGALS AND LAT/LONG: 40.19912924, -104.6533082							TASMAN PERSONNEL: KE			
SOIL TYPES: Poorly Graded Sand - SP							SURFACE GRADIENT: East			
SOIL SAMPLING							FACILITY INFRASTRUCTURE			
Date/Time	Soil Sample ID	PID (ppm)	Visual	Olfactory	Photo?	Screen or Lab Sample?	EQUIPMENT		Quantity	
							Above Ground Storage Tank (AST)			
11-20-2025 15:08	FL01-01@4'	0.0	No Staining	No Odor	Yes	Grab	Buried or Partially Buried Vessel			
11-20-2025 15:15	FL01-02@4'	0.1	No Staining	No Odor	Yes	Grab	Separator			
11-20-2025 15:24	FL01-03@4'	0.2	No Staining	No Odor	Yes	Grab	Emission Control Device (ECD)			
11-20-2025 15:40	FL01-04@4	0.1	No Staining	No Odor	Yes	Grab	Dump Line			
							Wellhead			
							Flowline		1 ✓	
							Other:			
							Soil Loads Removed			
							IMPACTED SOIL IDENTIFIED? No			
							ESTIMATED VOLUME OF IMPACTS:			
							Date	Number	CY	
							Total Removed		0 0	
							Disposal Facility:			
							Groundwater Recovery			
							DATE GW ENCOUNTERED:		DEPTH:	
							GROUNDWATER IN CONTACT WITH IMPACTED SOIL? N/A			
							LNAPL OR SHEEN OBSERVED ON GW?			
GROUNDWATER SAMPLING							Date	BBLs		
Date/Time	Groundwater Sample ID	Depth Collected	Turbid?	Sheen?	Odor?	Photo?				
							Total Removed		0	
							Disposal Facility:			

Chevron Rockies Business Unit

Field Qualitative Criteria for ECMC Reporting Associated with the Discovery of Potentially Impacted Material

If answered **Yes** to any of the questions listed below, this may suggest the presence of potentially impacted materials as outlined in ECMC Rule 912. Out of an abundance of caution, a “Yes” response will be reported to the ECMC within 24 hours after discovery, regardless of laboratory results. **Immediately notify the RBU Remediation Team.** Include a copy of this Field Qualitative Spill Criteria Checklist in the field Report.

Please answer the following questions when on-site:

1. Is there visible petroleum hydrocarbon staining in the soil? No_____
2. Does the soil sample from the stained area have a petroleum odor? No_____
3. Is there a petroleum hydrocarbon sheen on the nearby surface water? No_____
4. Does there appear to be a sheen of the surface of accumulated groundwater or seeps within the excavation indicative of petroleum? No_____
5. Is stained soil in contact with groundwater? No_____

Please Include relevant photos of the site conditions for items 1-5.

Location name: Ritchey 1-27 1

Please Circle Facility Type: Flowline



Photographic Log



Equipment ID: FL01-01 @ 4'		Equipment Type: Flowline	
Material:	Volume:	Contents:	
Notes/Conditions: FL01-01 @ 4'			

Equipment ID: FL01-02 @ 4'		Equipment Type: Flowline	
Material:	Volume:	Contents:	
Notes/Conditions: FL01-02 @ 4'			



Photographic Log



Equipment ID: FL01-03@4'

Equipment Type: Flowline

Material:

Volume:

Contents:

Notes/Conditions: FL01-03@4'

Equipment ID: FL01-04@4'

Equipment Type: Flowline

Material:

Volume:

Contents:

Notes/Conditions: FL01-04@4'



CLIENT: Noble Energy		SITE NAME: Ritchey 1-27 1					DATE: 11/21/2025	REM. PROJECT #: 39449	WEATHER: Cloudy, rainy, 40's	
SITE DIRECTIONS: CR 43 and CR 30, south 0.1 miles and east into							JOB#: 10650			
LEGALS AND LAT/LONG: 40.19912924, -104.6533082							TASMAN PERSONNEL: KE			
SOIL TYPES: Poorly Graded Sand - SP							SURFACE GRADIENT: East			
SOIL SAMPLING							FACILITY INFRASTRUCTURE			
Date/Time	Soil Sample ID	PID (ppm)	Visual	Olfactory	Photo?	Screen or Lab Sample?	EQUIPMENT		Quantity	
							Above Ground Storage Tank (AST)			
11-21-2025 09:06	FL01-05@4	0.1	No Staining	No Odor	Yes	Grab	Buried or Partially Buried Vessel			
11-21-2025 09:10	FL01-06@4'	0.1	No Staining	No Odor	Yes	Grab	Separator			
11-21-2025 09:22	FL01-07@4'	0.0	No Staining	No Odor	Yes	Lab	Emission Control Device (ECD)			
11-21-2025 09:33	FL01-08@4'	0.1	No Staining	No Odor	Yes	Grab	Dump Line			
11-21-2025 09:40	FL01-08@4'	0.0	No Staining	No Odor	Yes	Grab	Wellhead			
11-21-2025 09:49	FL01-09@4'	0.0	No Staining	No Odor	Yes	Grab	Flowline		1 ✓	
11-21-2025 10:22	FL01-10@4'	0.0	No Staining	No Odor	Yes	Grab	Other:			
11-21-2025 10:37	FL01-11@4'	0.0	No Staining	No Odor	Yes	Grab	Soil Loads Removed			
11-21-2025 11:48	BKG01@4'	0.0	No Staining	No Odor	Yes	Lab	IMPACTED SOIL IDENTIFIED?			
							ESTIMATED VOLUME OF IMPACTS:			
							Date	Number	CY	
							Total Removed		0 0	
							Disposal Facility:			
							Groundwater Recovery			
							DATE GW ENCOUNTERED:		DEPTH:	
							GROUNDWATER IN CONTACT WITH IMPACTED SOIL?			
							LNAPL OR SHEEN OBSERVED ON GW?			
GROUNDWATER SAMPLING							Date	BBLs		
Date/Time	Groundwater Sample ID	Depth Collected	Turbid?	Sheen?	Odor?	Photo?				
							Total Removed		0	
							Disposal Facility:			

Chevron Rockies Business Unit

Field Qualitative Criteria for ECMC Reporting Associated with the Discovery of Potentially Impacted Material

If answered **Yes** to any of the questions listed below, this may suggest the presence of potentially impacted materials as outlined in ECMC Rule 912. Out of an abundance of caution, a “Yes” response will be reported to the ECMC within 24 hours after discovery, regardless of laboratory results. **Immediately notify the RBU Remediation Team.** Include a copy of this Field Qualitative Spill Criteria Checklist in the field Report.

Please answer the following questions when on-site:

1. Is there visible petroleum hydrocarbon staining in the soil? No
2. Does the soil sample from the stained area have a petroleum odor? No
3. Is there a petroleum hydrocarbon sheen on the nearby surface water? No
4. Does there appear to be a sheen of the surface of accumulated groundwater or seeps within the excavation indicative of petroleum? No
5. Is stained soil in contact with groundwater? No

Please Include relevant photos of the site conditions for items 1-5.

Location name: Ritchey 1-27 1

Please Circle Facility Type: Flowline



Photographic Log



Equipment ID: FL01-05 @ 4'		Equipment Type: Flowline	
Material:	Volume:	Contents:	
Notes/Conditions: Facing east			

Equipment ID: FL01-06 @ 4'		Equipment Type: Flowline	
Material:	Volume:	Contents:	
Notes/Conditions: facing east			



Photographic Log



Equipment ID: FL01-07 @ 4'		Equipment Type: Flowline	
Material:	Volume:	Contents:	
Notes/Conditions: Facing southeast			

Equipment ID: FL01-08 @ 4'		Equipment Type: Flowline	
Material:	Volume:	Contents:	
Notes/Conditions: Facing south			



Photographic Log



Equipment ID: FL01-09@4'		Equipment Type: Flowline	
Material:	Volume:	Contents:	
Notes/Conditions: Facing south			

Equipment ID: FL01-10@4'		Equipment Type: Flowline	
Material:	Volume:	Contents:	
Notes/Conditions: Facing south			



Photographic Log



Equipment ID: FL01-11 @4'

Equipment Type: Flowline

Equipment ID:

Equipment Type:

Material:

Volume:

Contents:

Material:

Volume:

Contents:

Notes/Conditions: Facing south

Notes/Conditions:



4725 Independence St., Suite 100
Wheat Ridge, CO 80033

CLIENT: Noble Energy Inc.
LOGGED BY: Nelson Davis
PROJECT MANAGER: AJ Engelhardt
DRILLING CONTRACTOR: Tasman Inc.
DRILLING EQUIPMENT: Hand Auger
DRILL BIT SIZE (INCHES): 3.25
DATE STARTED - COMPLETED: 11/19/2025 - 11/19/2025
TOTAL BORING DEPTH (FT BGS): 6
DEPTH TO WATER (FT BGS): Not Encountered

RITCHEY H-63N65W 27NWNW	
BORING LOG ID: BKG03	
LOCATION: South of BKG04	
LATITUDE (NAD 83): 40.203377	
LONGITUDE (NAD 83): -104.658291	
ABANDONMENT METHOD: Native Soil	

Depth (feet)	Drilling Method	Water	Lithologic Description	USCS	PID (ppm)	Lab	Recovery %
0.00-5.00	Hand Auger		0.00-5.00 Ft: Brown, silty sand, fine sand, medium dense, dry, no odour, no staining.	SM	0.00-1.00 Ft, 0.0		100
1.00-2.00					1.00-2.00 Ft, 0.0	BKG03@1-2' 1050	
2.00-3.00					2.00-3.00 Ft, 0.0		
3.00-4.00					3.00-4.00 Ft, 0.0	BKG03@3-4' 1100	
4.00-5.00					4.00-5.00 Ft, 0.0		
5.00-6.00			5.00-6.00 Ft: Light brown, clayey sand, fine sand, medium dense, moist, no odour, no staining.	SC	5.00-6.00 Ft, 0.0	BKG03@5-6' 1110	
			BKG03 Terminated at 6 Ft (Groundwater not encountered)				



4725 Independence St., Suite 100
Wheat Ridge, CO 80033

CLIENT: Noble Energy Inc.
LOGGED BY: Nelson Davis
PROJECT MANAGER: AJ Engelhardt
DRILLING CONTRACTOR: Tasman Inc.
DRILLING EQUIPMENT: Hand Auger
DRILL BIT SIZE (INCHES): 3.25
DATE STARTED - COMPLETED: 11/19/2025 - 11/19/2025
TOTAL BORING DEPTH (FT BGS): 6
DEPTH TO WATER (FT BGS): Not Encountered

RITCHEY H-63N65W 27NWNW	
BORING LOG ID: BKG04	LOCATION: North-eastern most BKG location
LATITUDE (NAD 83): 40.204008	LONGITUDE (NAD 83): -104.658045
ABANDONMENT METHOD: Native Soil	

Depth (feet)	Drilling Method	Water	Lithologic Description	USCS	PID (ppm)	Lab	Recovery %
0.00-5.00	Hand Auger		0.00-5.00 Ft: Brown, silty sand, fine sand, medium dense, dry, no odour, no staining.	SM	0.00-1.00 Ft, 0.0		100
1.00-2.00					1.00-2.00 Ft, 0.0	BKG04@1-2" 1220	
2.00-3.00					2.00-3.00 Ft, 0.0		
3.00-4.00					3.00-4.00 Ft, 0.0	BKG04@3-4' 1230	
4.00-5.00					4.00-5.00 Ft, 0.0		
5.00-6.00			5.00-6.00 Ft: Light brown, poorly graded sand, fine sand, medium dense, dry, no odour, no staining.	SP	5.00-6.00 Ft, 0.0	BKG04@5-6' 1240	
BKG04 Terminated at 6 Ft (Groundwater not encountered)							



4725 Independence St., Suite 100
Wheat Ridge, CO 80033

CLIENT: Noble Energy Inc.
LOGGED BY: Nelson Davis
PROJECT MANAGER: AJ Engelhardt
DRILLING CONTRACTOR: Tasman Inc.
DRILLING EQUIPMENT: Hand Auger
DRILL BIT SIZE (INCHES): 3.25
DATE STARTED - COMPLETED: 11/19/2025 - 11/19/2025
TOTAL BORING DEPTH (FT BGS): 6
DEPTH TO WATER (FT BGS): Not Encountered

RITCHEY H-63N65W 27NWNW
BORING LOG ID: BKG06
LOCATION: South of BKG05
LATITUDE (NAD 83): 40.202918
LONGITUDE (NAD 83): -104.660337
ABANDONMENT METHOD: Native Soil

Depth (feet)	Drilling Method	Water	Lithologic Description	USCS	PID (ppm)	Lab	Recovery %
0.00-4.00	Hand Auger		0.00-4.00 Ft: Brown, silty sand, fine sand, medium dense, dry, no odour, no staining.	SM	0.00-1.00 Ft, NC		100
1.00-2.00					1.00-2.00 Ft, NC	BKG06@1-2" 1120	
2.00-3.00					2.00-3.00 Ft, NC		
3.00-4.00					3.00-4.00 Ft, NC	BKG06@3-4' 1130	
4.00-6.00				4.00-6.00 Ft: Tan, poorly graded sand, fine sand, medium dense, dry, no odour, no staining.	SP	4.00-5.00 Ft, NC	
5.00-6.00				5.00-6.00 Ft, NC		BKG06@5-6' 1140	
BKG06 Terminated at 6 Ft (Groundwater not encountered)							

