



# Site Data Integrity Review and Remedial Action Plan – NCLP PC AA04-05

PREPARED ON BEHALF OF  
CHEVRON USA, INC. FOR

Colorado Energy and Carbon  
Management Commission

Department of Natural Resources

DATE  
January 19, 2026

## REM ID 30352



## CONTENTS

1.	INTRODUCTION	1
1.1	SITE DETAILS AND BACKGROUND	1
2.	SITE INVESTIGATION AND SAMPLING ACTIVITIES	2
2.1	SPILL DISCOVERY AND FOLLOW-UP INVESTIGATION ACTIVITIES	2
2.2	SAMPLE ANALYSIS SUMMARY	3
2.2.1	Soil	3
2.2.2	Groundwater	7
3.	CONDITIONS OF APPROVAL (COAS)	8
4.	PLANNED/RECOMMENDED ACTIVITIES	13

### LIST OF TABLES

TABLE 1	INITIAL FORMS SUMMARY	1
TABLE 2	SENSITIVE RECEPTORS SUMMARY	2
TABLE 3	OVERVIEW OF ANALYTICAL LABORATORY REPORTS CONTAINING ANALYTICAL DATA FROM HISTORICAL SITE SOIL INVESTIGATIONS	3
TABLE 4	DETAILS OF OBSERVED DATA ALTERATIONS IN THE SOIL ANALYTICAL LABORATORY REPORT SUBMITTED TO ECMC	5
TABLE 5	DETAILS OF OBSERVED DATA ALTERATIONS AND DISCREPANCIES IN SOIL SUMMARY TABLES AND FIGURES PRESENTED TO ECMC	6
TABLE 6	SUMMARY OF ALL COAS	8
APPENDIX A	CORRECTED SOIL ANALYTICAL RESULTS SUMMARY FIGURE AND TABLES	
APPENDIX B	ALTERED ANALYTICAL LABORATORY REPORT SUBMITTED BY EAGLE TO ECMC	

## ACRONYMS AND ABBREVIATIONS

<b>Acronym</b>	<b>Description</b>
bgs	below ground surface
Chevron	Chevron U.S.A. Inc.
COA	Conditions of Approval
DIR	Data Integrity Review
Doc No.	Document Number
Eagle	Eagle Environmental Consulting, LLC
ECMC	Energy and Carbon Management Commission
ERM	Environmental Resources Management, Inc.
ft	feet
GSSL	Groundwater Soil Screening Level
NFA	No Further Action
Noble	Noble Energy, Inc. (ECMC Operator Number 100322)
Origins	Origins Laboratory Inc.
QA/QC	Quality Assurance/Quality Control
RAP	Remedial Action Plan
REM #	Remediation Project Number
RSSL	Residential Soil Screening Level
SDG	Sample Delivery Group

# 1. INTRODUCTION

As part of Noble Energy, Inc.'s (Noble's) Voluntary Disclosure under Colorado Energy and Carbon Management Commission (ECMC) Rule 525.e. (Disclosure), Noble and/or its affiliated entities engaged Environmental Resources Management, Inc. (ERM) to conduct a comprehensive review and assessment of prior environmental consulting work (Data Integrity Review or DIR) associated with remediation projects (Projects) included within its Disclosure.

The scope of the DIR includes: (1) identifying potential errors, omissions, discrepancies, and/or other relevant deficiencies associated with the disclosed misconduct of a prior environmental consultant that affected Noble Projects and (2) independently assessing the affected Noble Projects to provide assurance that the work performed to date is consistent with ECMC requirements and to provide recommendations to address and remediate the potential misconduct, if needed, consistent with ECMC requirements, including those specified in ECMC's May 20, 2025 Operator Instructions.

Additionally, ERM has conducted a thorough review of all the previously submitted Form 27s to summarize the outstanding Conditions of Approval (COAs). The scope of the COAs review includes: (1) examining all COAs issued by the ECMC for Form 27 documents previously submitted during each project's remediation cycle; (2) determining the current status of each COA (pending, in progress or complete); and (3) identifying and documenting outstanding COAs and required next steps.

ERM has prepared this memorandum to memorialize the findings associated with its DIR of **REM # 30352** (NCLP PC AA04-05 [Project or site]) and to summarize all outstanding COAs, along with recommendations and planning activities, as part of a Remedial Action Plan (RAP). This DIR/RAP memorandum advances the project toward closure and No Further Action (NFA) status.

Results of the DIR are presented in Appendix A (Figure A-1).

## 1.1 SITE DETAILS AND BACKGROUND

- Facility Name: NCLP PC AA04-05
- Facility Type: Well
- Release ID: N/A
- Latitude/Longitude: 40.517612, -104.448838
- Potentially Impacted Media: soil

The initial regulatory forms submitted for this site are summarized in Table 1 below.

**TABLE 1 INITIAL FORMS SUMMARY**

Initial Form Type (19 or 27)	Date	REM ID Present (Yes or No)	Spill/Release Type (decommissioning or active)
Form 27 (Doc No. 403449299)	06/29/2023	Yes	Decommissioning

The sensitive receptors identified at the site are based primarily on information provided in Form 19 and Form 27 submissions, as summarized in Table 2 below.

**TABLE 2 SENSITIVE RECEPTORS SUMMARY**

<b>Receptor</b>	<b>Finding</b>
Most sensitive adjacent land use	Grassland
Domestic water well within ¼ mile?	No
Surface water within ¼ mile?	Yes
Groundwater less than 20 feet (ft) below ground surface (bgs)	No
Other potential receptors within ¼ mile?	<ul style="list-style-type: none"> <li>• Well Within Pronghorn Winter Concentration Area HPH</li> <li>• Aquatic Native Species Conservation Waters 0.06mi E</li> <li>• Freshwater Emergent Wetland 0.01mi W, 0.06mi E</li> </ul>
Other potential receptors	<ul style="list-style-type: none"> <li>• N/A</li> </ul>

## 2. SITE INVESTIGATION AND SAMPLING ACTIVITIES

The details contained in this Section 2 are intended to serve as a summary of site investigation and sampling activities that were undertaken prior to submission of this DIR/RAP memorandum. Where available, company names for environmental consultants and laboratories have been included to indicate which entities conducted work and/or submitted documentation and data to Chevron U.S.A. Inc. (Chevron) and/or ECMC. Additionally, in cases where ERM was unable to locate documentation indicating that investigation and sampling results were submitted to ECMC, this has been noted.

### 2.1 SPILL DISCOVERY AND FOLLOW-UP INVESTIGATION ACTIVITIES

- The Initial Form 27 (Doc No. 403449299; approved) submitted on June 29, 2023 by Chevron indicated that pursuant to Rule 911 a site investigation would be conducted pertaining to the NCLP CC AA04-05 wellhead cut and cap. The flowline was previously abandoned in place on September 28, 2018, and Colorado Oil and Gas Conservation Commission was notified on Form 44 (Doc No. 402090968; approved, submitted on March 3, 2020).
- The site investigation pertaining to the wellhead cut and cap was conducted on October 16, 2023 by Eagle Environmental Consulting LLC (Eagle) of Wheat Ridge, Colorado. The wellhead *Closure Assessment Summary – October 2023* prepared by Eagle was submitted as an attachment to Supplemental Form 27 (Doc No. 403739914; approved) submitted on April 2, 2024. Laboratory analytical results are associated with lab report sample delivery group (SDG) Y310441 and Y311075. The analytical summary is included in Appendix A (Tables A-1 through A-5).
- A request for NFA was requested on October 27, 2024 in Supplemental Form 27 (Doc No. 403971475; denied) submitted by ERM. The NFA request was subsequently denied by ECMC for REM 30352 on December 5, 2024 with the removal of the request due to discrepancies in analytical data associated with the Remediation project.

## 2.2 SAMPLE ANALYSIS SUMMARY

### 2.2.1 SOIL

- No organic impacts in soil at the Site were detected above action levels as detailed in Appendix A (Tables A-2 and A-3).
- Exceedances of ECMC Table 915-1 values or local background levels, where applicable, were observed for arsenic (Residential Soil Screening Level/Groundwater Soil Screening Level (RSSL/GSSL)) as detailed in Appendix A (Figure A-1 and Table A-5). The arsenic exceedance identified in WH-FS-01@8' was delineated on November 2, 2023, and subsequent background sample did not indicate any additional exceedance.

#### 2.2.1.1 INDEPENDENT EVALUATION OF SOIL SAMPLE LABORATORY DATA

This section presents the results of ERM's independent evaluation of soil sample laboratory data conducted as part of the DIR. Upon receipt of encrypted laboratory reports provided directly from the laboratory, ERM conducted a thorough and systematic review of all laboratory documentation submitted by Eagle to ECMC, along with all summary tables and figures included with site investigation reports as part of previous Form 27 submittals.

All data including Quality Assurance/Quality Control (QA/QC) results, presented by Eagle in the submitted laboratory reports, summary tables, figures, and ECMC Forms (e.g., Form 27) narratives were compared against the encrypted laboratory reports. Any identified data alterations and discrepancies were thoroughly documented and have been addressed and summarized in this memorandum. Table 3 provides an overview of the analytical laboratory reports reviewed during this independent evaluation, including key metadata and findings summary. Corrected summary tables and figures for the soil analytical results are included in Appendix A (Tables A-2 through A-5). The analytical report containing data alterations is included in Appendix B, with the altered values highlighted in yellow, and will be uploaded to ECMC's webforms portal along with Form 27 for the DIR package.

**TABLE 3 OVERVIEW OF ANALYTICAL LABORATORY REPORTS CONTAINING ANALYTICAL DATA FROM HISTORICAL SITE SOIL INVESTIGATIONS**

Laboratory Report SDG Number	Sample Date	Lab	Sampled by	Comment
Y310441 (Page 8 – Appendix B)	10/16/2023	Origins	Eagle Environmental Consulting, LLC (Eagle)	ERM is in possession of the encrypted lab report; <b>data alterations and discrepancies were observed</b> , as detailed below.
Y311075 (Pages 5 – Appendix B)	10/16/2023	Origins	Eagle	ERM is in possession of the encrypted lab report; <b>data alterations and discrepancies were observed</b> , as detailed below.

- Table 4 details the observed data alterations associated with soil analytical analyses submitted to ECMC by Eagle as part of a *Closure Assessment Summary – October 2023* included as an attachment with Supplemental Form 27 Doc No. 403971475 (submitted October 27, 2024; denied).
  - In this instance, the observed alterations were limited to changed analyte concentrations. No other types of alterations (e.g., reporting limits, narratives, omitted analyses) were observed.
- Table 5 lists observed data alterations and data discrepancies in summary tables and figures in the Site Investigation Reports included as attachments with Supplementary Form 27s.
  - In this instance, the observed alterations were limited to changed analyte concentrations. No other types of alterations were observed.

TABLE 4 DETAILS OF OBSERVED DATA ALTERATIONS IN THE SOIL ANALYTICAL LABORATORY REPORT SUBMITTED TO ECMC

Laboratory Report SDG Number	Laboratory Report Page Number	Sample ID	Sample Depth (ft)	Sample Date	Analyte <sup>1</sup>	Laboratory Report Issuance Date to Consultant	Laboratory Report Data Reported and/or Submitted by Consultant	Encrypted Laboratory Report Reissuance Date to ERM	Encrypted Reissuance of Laboratory Report Delivered to ERM by Lab	ECMC Table 915-1 GSSLs
Y310441-01	8	WH-FS-01@8'	8	10/16/2023	Arsenic	10/31/2023	1.64	02/13/2025	4.00	0.29 / 7.075*
Y311075-01	2	Background-01@2	2'	11/02/2023	Arsenic	11/21/2023	1.78	02/13/2025	5.66	0.29 / 7.075*

Eagle = Eagle Environmental Consulting, LLC; ECMC = Colorado Energy and Carbon Management Commission; ERM = Environmental Resources Management, Inc.; ft = feet; GSSL = Groundwater Soil Screening Level; Origins = Origins Laboratory Inc.; SDG = Sample Delivery Group.

<sup>1</sup>Units: milligrams per kilogram (mg/kg) for all analytes.

\*Local Cleanup Level: 1.25\*background collected from sample Background-01@2' (Arsenic, 5.66 mg/kg).

Yellow cells indicate values lower than encrypted lab report data.

Bolded value indicates exceedance of the ECMC 915-1 GSSL or the local cleanup level, where applicable.

**TABLE 5      DETAILS OF OBSERVED DATA ALTERATIONS AND DISCREPANCIES IN SOIL SUMMARY TABLES AND FIGURES PRESENTED TO ECMC**

Sample ID	Sample Depth (ft)	Sample Date	Sampled by	Form 27 Doc No.	Source Figure	Source Table	Analyte	Data Presented by Consultant	Laboratory Report Data Reported and/or Provided by Consultant	Encrypted Reissuance of Laboratory Report Data Delivered to ERM by Lab	ECMC Table 915-1 GSSLs
WH-FS-01@8'	8	10/16/2023	Eagle	403971475	Figure 5	Table 2	Arsenic	1.64	1.64	4.00	0.29 / 7.075*
Background-01@2	2'	11/02/2023	Eagle	403971475	Figure 5	Table 2	Arsenic	1.78	1.78	5.66	0.29 / 7.075*

Eagle = Eagle Environmental Consulting, LLC; ECMC = Colorado Energy and Carbon Management Commission; ERM = Environmental Resources Management, Inc.; ft = feet; GSSL = Groundwater Soil Screening Level.

<sup>1</sup>Units: milligrams per kilogram (mg/kg) for all analytes

\*Local Cleanup Level: 1.25\*background collected from sample Background-01@2' (Arsenic, 5.66 mg/kg).

Yellow cells indicate values lower than encrypted lab report data.

Bolded value indicates exceedance of the ECMC 915-1 GSSL or the local cleanup level, where applicable.

### 2.2.2 GROUNDWATER

- No groundwater was encountered during decommissioning activities. Thus, groundwater investigation activities have not been conducted.

### 3. CONDITIONS OF APPROVAL (COAS)

All COAs documented in historical Form 27 submittals for the project are summarized in Table 6 below, including their current status and the proposed activities needed to resolve pending items and advance the project toward NFA status.

TABLE 6 SUMMARY OF ALL COAS

COA /General comment	Status	Notes	Form 27 Doc No.	Submission Date
1.a Operator shall collect confirmation soil samples as described in the Rule 915.e.(2). Operator will analyze soil samples for total petroleum hydrocarbons (C6-C36), Table 915-1 Organic Compounds in Soil, Table 915-1 metals, and Table 915-1 Soil Suitability for Reclamation (Electrical conductivity, Sodium adsorption ratio, and pH by saturated paste method, boron (hot water soluble)).	Complete	Soil samples were collected and analyzed per request. The data was included in <i>Closure Assessment Summary – October 2023</i> as an attachment to Supplemental Form 27 (Doc No. 403971475; denied) submitted on October 27, 2024.	Initial Form 27 Doc No. 403449299	06/29/2023
1.b If groundwater is encountered, Operator will analyze groundwater samples for Table 915-1 Groundwater Inorganic Parameters (total dissolved solids, sulfate, chloride) and organic compounds in groundwater.	Complete	Groundwater was not encountered as documented in <i>Closure Assessment Summary – October 2023</i> as an attachment to Supplemental Form 27 (Doc No. 403971475; denied) submitted on October 27, 2024.	Initial Form 27 Doc No. 403449299	06/29/2023
2.a "Final decommissioning documentation will be provided on a Supplemental Form 27 within 60 days.	Complete	A Form 6-Well Abandonment Report was submitted on 11/28/2023 (Doc No. 403608544; Approved on 3/15/2024). Therefore, this COA has been satisfied.	Supplemental Form 27 Doc No. 403739914	04/02/2024
3.a ECMC has removed the NFA request due to discrepancies in analytical data associated with the Remediation project.	Complete	Comment noted	Supplemental Form 27 Doc No. 403971475	10/27/2024

COA / General comment	Status	Notes	Form 27 Doc No.	Submission Date
3.b ECMC has denied this Form 27 due to the following discrepancies in analytical data associated with the Remediation project. Operator will submit a replacement Form 27 for this project that includes the following components: <ul style="list-style-type: none"> <li>A statement from the Operator indicating that this project is included in the DIR.</li> </ul>	Complete	This COA has been satisfied with the submittal of this Supplemental Form 27 that includes a DIR documenting all identified data anomalies in the project record.	Supplemental Form 27 Doc No. 403971475	10/27/2024
3.c Operator will submit a replacement Form 27 for this project that includes the following components: <ul style="list-style-type: none"> <li>A site-specific description describing any data anomalies in the project record.</li> </ul>	Complete	This COA has been satisfied with the submittal of this Supplemental Form 27 that includes a DIR documenting all identified data anomalies in the project record.	Supplemental Form 27 Doc No. 403971475	10/27/2024
3.d Operator will submit a replacement Form 27 for this project that includes the following components: <ul style="list-style-type: none"> <li>The original, correct laboratory analytical report as a stand-alone attachment.</li> </ul>	Complete	This COA has been satisfied with the submittal of this Supplemental Form 27 that includes, as a standalone attachment, the encrypted laboratory reports received directly from the laboratories.	Supplemental Form 27 Doc No. 403971475	10/27/2024
3.e Operator will submit a replacement Form 27 for this project that includes the following components: <ul style="list-style-type: none"> <li>a Form 19 document ID as a Related Document, if necessary to report a Spill or Release.</li> </ul>	Complete	Based on the DIR, no organic exceedances were found. Therefore, a submittal of an additional Form 19 is not necessary to report a spill or release.	Supplemental Form 27 Doc No. 403971475	10/27/2024
4.a ECMC has denied this form as the Operator has provided no substantial and verifiable information as to how the documentation was verified, who verified the information, and how the conclusion that 'Laboratory data is reflective of field conditions' was determined.	Complete	This COA has been satisfied with the submittal of this Supplemental Form 27 that includes, as a standalone attachment, the encrypted laboratory reports received directly from the laboratories.	Supplemental Form 27 Doc No. 404086722	02/07/2025

COA /General comment	Status	Notes	Form 27 Doc No.	Submission Date
4.b ECMC will not approve additional forms until the missing information is provided.	Complete	This COA has been satisfied with the submittal of this Supplemental Form 27 that includes a thorough DIR.	Supplemental Form 27 Doc No. 404086722	02/07/2025
5.a ECMC has denied this form as the Operator has provided no substantial and verifiable information as to how the documentation was verified, who verified the information, and how the conclusion that 'Laboratory data is reflective of field conditions' was determined.	Complete	This COA has been satisfied with the submittal of this Supplemental Form 27 that includes, as a standalone attachment, the encrypted laboratory reports received directly from the laboratories.	Supplemental Form 27 Doc No. 404119913	03/10/2025
5.b. ECMC will not approve additional forms until the missing information is provided.	Complete	This COA has been satisfied with the submittal of this Supplemental Form 27 that includes a thorough DIR.	Supplemental Form 27 Doc No. 404119913	03/10/2025
6.a ECMC has denied this Form 27 due to the following discrepancies in analytical data associated with the Remediation project. Operator will submit a replacement Form 27 for this project that includes the following components: <ul style="list-style-type: none"> <li>A statement from the Operator indicating that this project is included in the DIR.</li> </ul>	Complete	This COA has been satisfied with the submittal of this Supplemental Form 27 that includes a statement, in the Operator Comments indicating that this project is included in the DIR.	Supplemental Form 27 Doc No. 404134683	03/20/2025
6.b Operator will submit a replacement Form 27 for this project that includes the following components: <ul style="list-style-type: none"> <li>A site-specific description describing any data anomalies in the project record.</li> </ul>	Complete	This COA has been satisfied with the submittal of this Supplemental Form 27 that includes a DIR documenting all identified data anomalies in the project record.	Supplemental Form 27 Doc No. 404134683	03/20/2025
6.c Operator will submit a replacement Form 27 for this project that includes the following components: <ul style="list-style-type: none"> <li>The original, correct laboratory analytical report as a stand-alone attachment.</li> </ul>	Complete	This COA has been satisfied with the submittal of this Supplemental Form 27 that includes, as a standalone attachment, the encrypted laboratory reports received directly from the laboratories.	Supplemental Form 27 Doc No. 404134683	03/20/2025

COA /General comment	Status	Notes	Form 27 Doc No.	Submission Date
6.d Operator will submit a replacement Form 27 for this project that includes the following components: <ul style="list-style-type: none"> <li>• a Form 19 document ID as a Related Document, if necessary to report a Spill or Release.</li> </ul>	Complete	Based on the DIR, no organic exceedances were found. Therefore, a submittal of an additional Form 19 is not necessary to report a spill or release.	Supplemental Form 27 Doc No. 404134683	03/20/2025
6.e ECMC will not approve any future forms until all of this information has been provided and verified	Complete	This COA has been satisfied with the submittal of this Supplemental Form 27 that includes a thorough DIR.	Supplemental Form 27 Doc No. 404134683	03/20/2025
7.a.This is the 5th denial for the same or similar issues related to reporting on this Project number.	Complete	The Operator acknowledges the repeated denials and understands the need for improved reporting. Corrective steps will be taken to address outstanding COAs, and the operator will provide accurate updates through future Supplemental Form 27 submittals.	Supplemental Form 27 Doc No. 404143308	03/28/2025
7.b ECMC will not approve any future forms until all of this information has been provided.	Complete	This COA has been satisfied with the submittal of this Supplemental Form 27 that includes a thorough DIR.	Supplemental Form 27 Doc No. 404143308	03/28/2025
7.c. This form was reviewed by the following ECMC personnel prior to denial/conditional approval: <ul style="list-style-type: none"> <li>• Area Environmental Protection Specialist</li> <li>• Area Supervisor</li> <li>• Environmental Data Group Supervisor</li> </ul>	Complete	Comment noted	Supplemental Form 27 Doc No. 404143308	03/28/2025
7.d ECMC has denied this Form 27 due to the following discrepancies in analytical data associated with the Remediation project. Operator will submit a replacement Form 27 for this project that includes the following components:	Complete	This COA has been satisfied with the submittal of this Supplemental Form 27 that includes a statement, in the Operator Comments indicating that this project is included in the DIR.	Supplemental Form 27 Doc No. 404143308	03/28/2025

COA /General comment	Status	Notes	Form 27 Doc No.	Submission Date
<ul style="list-style-type: none"> <li>A statement from the Operator indicating that this project is included in the DIR.</li> </ul>				
<p>7.e Operator will submit a replacement Form 27 for this project that includes the following components:</p> <ul style="list-style-type: none"> <li>A site-specific description describing any data anomalies in the project record.</li> </ul>	Complete	This COA has been satisfied with the submittal of this Supplemental Form 27 that includes a DIR documenting all identified data anomalies in the project record.	Supplemental Form 27 Doc No. 404143308	03/28/2025
<p>7.f Operator will submit a replacement Form 27 for this project that includes the following components:</p> <ul style="list-style-type: none"> <li>The original, correct laboratory analytical report as a stand-alone attachment.</li> </ul>	Complete	This COA has been satisfied with the submittal of this Supplemental Form 27 that includes, as a standalone attachment, the encrypted laboratory reports received directly from the laboratories.	Supplemental Form 27 Doc No. 404143308	03/28/2025
<p>7.g Operator will submit a replacement Form 27 for this project that includes the following components:</p> <ul style="list-style-type: none"> <li>a Form 19 document ID as a Related Document, if necessary to report a Spill or Release.</li> </ul>	Complete	Based on the DIR, no organic exceedances were found. Therefore, a submittal of an additional Form 19 is not necessary to report a spill or release.	Supplemental Form 27 Doc No. 404143308	03/28/2025

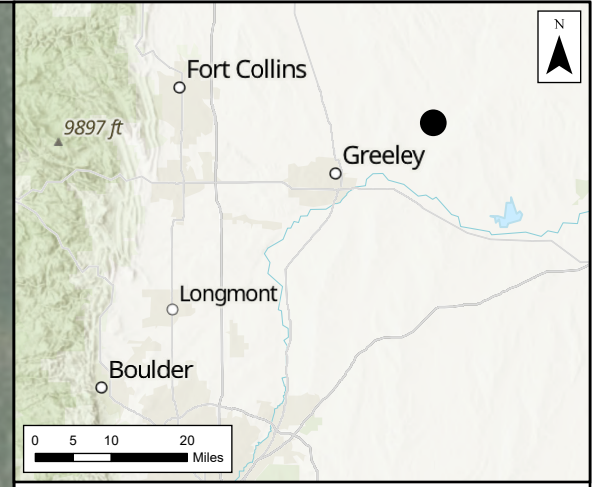
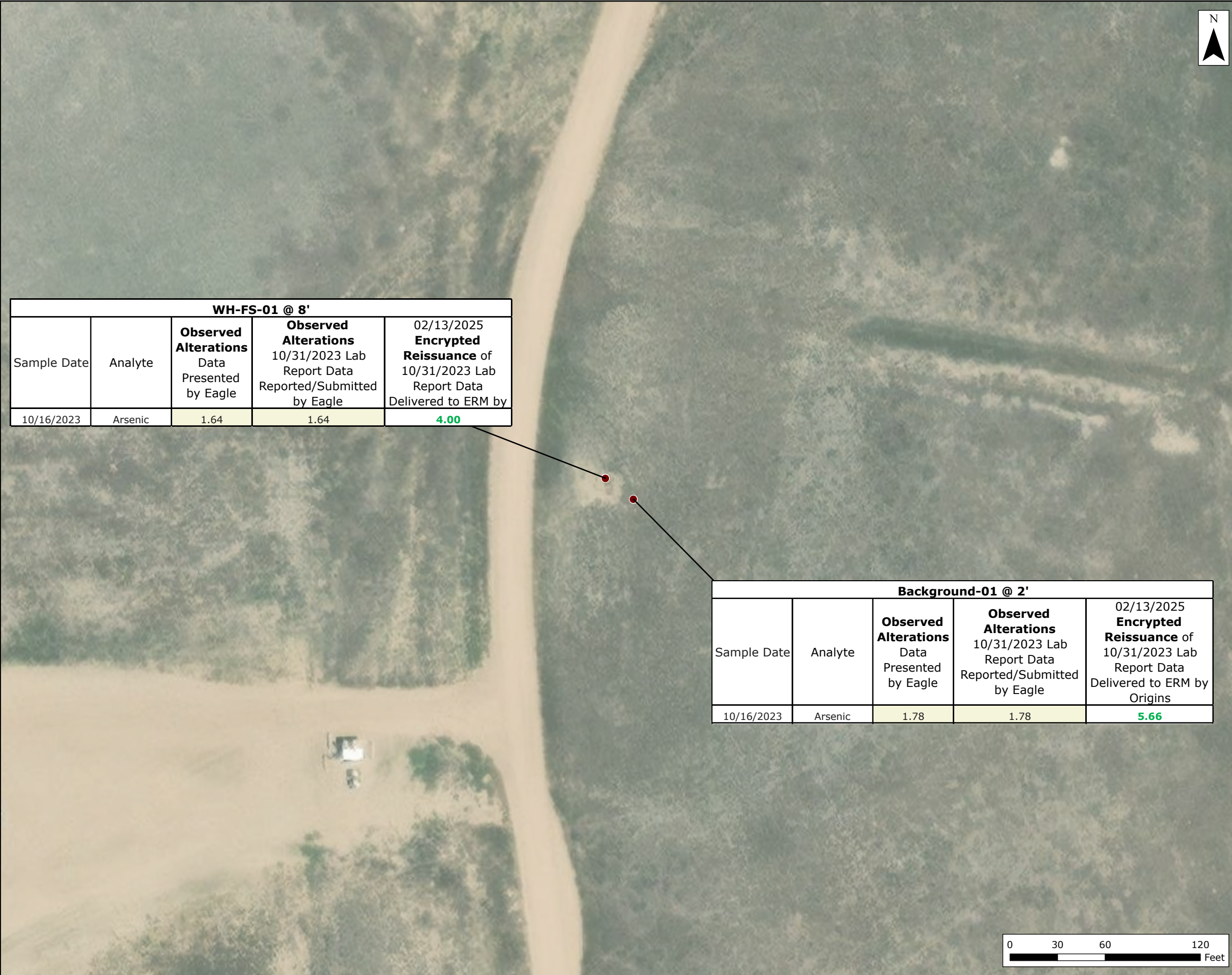
## 4. PLANNED/RECOMMENDED ACTIVITIES

In response to the confirmed alterations described in Section 2.2 the following initial corrective actions have been implemented:

- Submittal of a Supplemental Form 27, including this DIR memorandum and summary tables and figure updated based on the encrypted laboratory report.
- Additionally, this Supplemental Form 27 includes documentation of all outstanding COAs along with a RAP to address all pending activities for this site. The following site activities are planned:
- This DIR did not identify any data alterations requiring additional site investigations or corrective actions. The current analytical results are below RSSL, GSSL, and/or Local clean up action levels. Therefore, operator requests NFA for REM 30352.

APPENDIX A

CORRECTED SOIL ANALYTICAL RESULTS  
SUMMARY FIGURE AND TABLES



**Legend**

- Soil Sample Location

Notes:

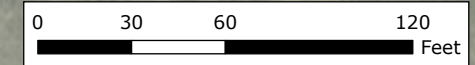
Yellow cells indicate values lower than encrypted lab report data.  
 Green values are above ECMC Table 915-1 and representative of background levels.

ECMC Table 915-1 GSSLs Listed in mg/kg  
 Arsenic = 0.29 (max. BG = 5.66) (1.25x max. BG = 7.075)

ECMC = Energy and Carbon Management Commission  
 WH = Wellhead  
 GSSL = Groundwater Soil Screening Levels  
 mg/kg = milligram per kilogram

WH-FS-01 @ 8'				
Sample Date	Analyte	Observed Alterations Data Presented by Eagle	Observed Alterations 10/31/2023 Lab Report Data Reported/Submitted by Eagle	02/13/2025 Encrypted Reissuance of 10/31/2023 Lab Report Data Delivered to ERM by
10/16/2023	Arsenic	1.64	1.64	4.00

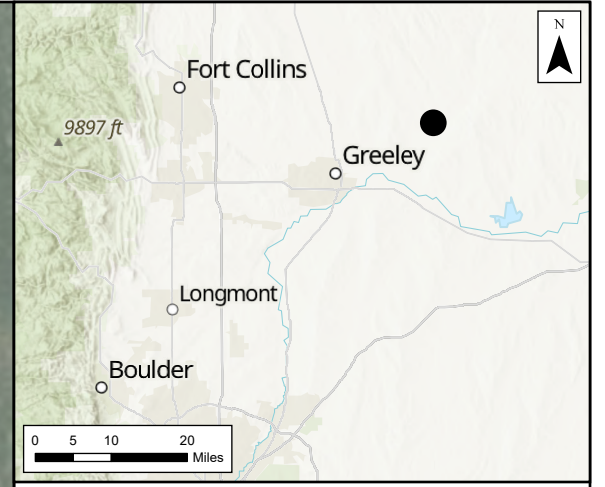
Background-01 @ 2'				
Sample Date	Analyte	Observed Alterations Data Presented by Eagle	Observed Alterations 10/31/2023 Lab Report Data Reported/Submitted by Eagle	02/13/2025 Encrypted Reissuance of 10/31/2023 Lab Report Data Delivered to ERM by Origins
10/16/2023	Arsenic	1.78	1.78	5.66



**Figure A-1**  
**Observed Data Alterations and Discrepancies for Soil Samples for Data Integrity Review**

NCLP PC AA04-05  
 REM# 30352  
 Operator: 100322  
 Weld County, CO





**Legend**

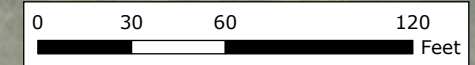
- Soil Sample Location

Notes:  
 Sampling conducted by former consultant on 16 Oct 2023.  
 Green values are above ECMC Table 915-1 and representative of background levels.

Analytical results below laboratory detection limits, sample coordinates not available, or within compliance of ECMC Table 915-1 not shown.

ECMC Table 915-1 GSSLs Listed in mg/kg  
 Arsenic = 0.29 (max. BG = 5.66) (1.25x max. BG = 7.075)

ECMC = Energy and Carbon Management Commission  
 ft bgs = feet below ground surface  
 WH = Wellhead  
 GSSL = Groundwater Soil Screening Levels  
 mg/kg = milligram per kilogram



**Figure A-2**  
**Exceedance Values**  
**in Soil Samples**  
 NCLP PC AA04-05  
 REM# 30352  
 Operator: 100322  
 Weld County, CO



**TABLE A-1**  
**HISTORICAL SOIL SAMPLE AND FIELD SCREENING INFORMATION**  
**OPERATOR (NOBLE 10032)**  
**NCLP PC AA04-05, WELD COUNTY, COLORADO**  
**REM # 30352**

Sample ID	Sample Date	Depth (ft bgs)	GPS Data Latitude	GPS Data Longitude	VOC Concentration (ppm)
Background-01@2' †	10/16/2023	2	40.51757	-104.44878	NA
WH-FS-01@8' †	10/16/2023	8	40.51761	-104.44884	NA

Notes:

1. Global Positioning System (GPS) data is provided in decimal degrees using North American Datum (NAD) 83.
2. Volatile organic compound (VOC) concentrations are measured in the field using a photoionization detector (PID).

ECMC = Energy and Carbon Management Commission

ppm = Parts per million

ft bgs = Feet below ground surface

NA = Not available

PID data not available at this time. This information will be included in future submission, if it becomes available.

† = EAGLE

**TABLE A-2**  
**HISTORICAL SOIL ANALYTICAL RESULTS SUMMARY TABLE - ORGANICS**  
**OPERATOR (NOBLE 100322)**  
**NCLP PC AA04-05, WELD COUNTY, COLORADO**  
**REM # 30352**

Sample ID	Sample Date	Depth (ft bgs)	Benzene (mg/kg)	Toluene (mg/kg)	Ethyl-benzene (mg/kg)	Xylenes (mg/kg)	1,2,4-Trimethyl-Benzene (mg/kg)	1,3,5-Trimethyl-Benzene (mg/kg)	Naphthalene (mg/kg)	TPH	TPH GRO (mg/kg)	TPH DRO (mg/kg)	TPH ORO (mg/kg)
<b>ECMC Table 915-1 Limits (Residential SSL)</b>			<b>1.2</b>	<b>490</b>	<b>5.8</b>	<b>58</b>	<b>30</b>	<b>27</b>	<b>2</b>	<b>500</b>	<b>500**</b>		
<b>ECMC Table 915-1 Limits (Protection of Groundwater)</b>			<b>0.0026</b>	<b>0.69</b>	<b>0.78</b>	<b>9.9</b>	<b>0.0081</b>	<b>0.0087</b>	<b>0.0038</b>	<b>500</b>	<b>500**</b>		
WH-FS-01@8' †	10/16/2023	8	< 0.00200 Ua	< 0.00200 Ua	< 0.00200 Ua	< 0.00200 Ua	< 0.00200 Ua	< 0.00200 Ua	< 0.00380 Ua	< 100	< 0.200 Ua	< 25.0 Ua	< 100 Ua

Notes:

1. Bold values exceed the ECMC Table 915-1 limit(s)
2. Red & blue highlighted soil analytical values indicate an exceedance of the referenced soil screening level (SSL)
3. \* Indicates laboratory reporting limit in excess of SSL
4. \*\* Summation of GRO+DRO+ORO must be less than 500 mg/kg

ECMC = Energy and Carbon Management Commission

(<) = Analytical result is less than the indicated laboratory reporting limit.

TPH-GRO = Total petroleum hydrocarbons - gasoline range organics

TPH-DRO = Total petroleum hydrocarbons - diesel range organics

TPH-ORO = Total petroleum hydrocarbons - oil range organics

mg/kg = Milligrams per kilogram

ft bgs = Feet below ground surface

NA = Not analyzed

Assume wet weight on all historical data unless the lab data specifies wet vs. dry.

† = EAGLE

Qualifier Definition(s)

**Origins Laboratory, Inc:**

Ua = Sample is Non-Detect.

**TABLE A-3  
HISTORICAL SOIL ANALYTICAL RESULTS SUMMARY TABLE - PAHs  
OPERATOR (NOBLE 100322)  
NCLP PC AA04-05, WELD COUNTY, COLORADO  
REM # 30352**

Sample ID	Sample Date	Depth (ft bgs)	Acenaphthene (mg/kg)	Anthracene (mg/kg)	Benzo(a) anthracene (mg/kg)	Benzo(a) pyrene (mg/kg)	Benzo(b) fluoranthene (mg/kg)	Benzo(k) fluoranthene (mg/kg)	Chrysene (mg/kg)	Dibenzo(a,h) anthracene (mg/kg)	Fluoranthene (mg/kg)	Fluorene (mg/kg)	Indeno(1,2,3-cd)pyrene (mg/kg)	Pyrene (mg/kg)	1-Methyl-Naphthalene (mg/kg)	2-Methyl-Naphthalene (mg/kg)
<b>ECMC Table 915-1 Limits (Residential SSL)</b>			<b>360</b>	<b>1800</b>	<b>1.1</b>	<b>0.11</b>	<b>1.1</b>	<b>11</b>	<b>110</b>	<b>0.11</b>	<b>240</b>	<b>240</b>	<b>1.1</b>	<b>180</b>	<b>18</b>	<b>24</b>
<b>ECMC Table 915-1 Limits (Protection of Groundwater)</b>			<b>0.55</b>	<b>5.8</b>	<b>0.011</b>	<b>0.24</b>	<b>0.3</b>	<b>2.9</b>	<b>9</b>	<b>0.096</b>	<b>8.9</b>	<b>0.54</b>	<b>0.98</b>	<b>1.3</b>	<b>0.006</b>	<b>0.019</b>
WH-FS-01@8' †	10/16/2023	8	< 0.020 Ua	< 0.020 Ua	< 0.005 Ua	< 0.020 Ua	< 0.020 Ua	< 0.020 Ua	< 0.020 Ua	< 0.020 Ua	< 0.020 Ua	< 0.020 Ua	< 0.020 Ua	< 0.020 Ua	< 0.002 Ua	< 0.002 Ua

Notes:  
1. Bold values exceed the ECMC Table 915-1 limit(s)  
2. Red & blue highlighted soil analytical values indicate an exceedance of the referenced soil screening level (SSL)  
3. \* Indicates laboratory reporting limit in excess of SSL  
ECMC = Energy and Carbon Management Commission  
(<) = Analytical result is less than the indicated laboratory reporting limit.  
PAH= Polycyclic Aromatic Hydrocarbon  
mg/kg = Milligrams per kilogram  
ft bgs = Feet below ground surface  
NA = Not analyzed  
Assume wet weight on all historical data unless the lab data specifies wet vs. dry.  
† = EAGLE  
Qualifier Definition(s)  
**Origins Laboratory, Inc:**  
Ua = Sample is Non-Detect.

**TABLE A-4**  
**HISTORICAL SOIL ANALYTICAL RESULTS SUMMARY TABLE - SSR**  
**OPERATOR (NOBLE 100322)**  
**NCLP PC AA04-05, WELD COUNTY, COLORADO**  
**REM # 30352**

Sample ID	Sample Date	Depth (ft bgs)	pH (Standard Units)	EC (mmhos/cm)	SAR (Standard Units)	Boron (mg/L)
<b>ECMC Table 915-1 Soil Suitability Limits</b>			<b>6-8.3</b>	<b>4</b>	<b>6</b>	<b>2</b>
WH-FS-01@8' †	10/16/2023	8	8.09	0.660	2.23	0.110
<b>Maximum Background Concentration</b>			<b>NA</b>	<b>NA</b>	<b>NA</b>	<b>NA</b>

Notes:

1. **Bold** faced values exceed the ECMC Table 915-1 limit(s), but are within background concentrations.
2. **Bold** faced values exceed the ECMC Table 915-1 limit(s) and native background concentrations.
3. **Brown highlighted** soil analytical values indicate an exceedance of Table 915-1.

ECMC = Energy and Carbon Management Commission

NA = Not analyzed

ft bgs = Feet below ground surface

mg/L = milligrams per liter

mmhos/cm = millimhos per centimeter

SSR= Soil Suitability for Reclamation

EC = Eletrical Conductivity

SAR = Sodium Adsorption Ratio

Assume wet weight on all historical data unless the lab data specifies wet vs. dry.

† = EAGLE

**TABLE A-5**  
**HISTORICAL SOIL ANALYTICAL RESULTS SUMMARY TABLE - METALS**  
**OPERATOR (NOBLE 100322)**  
**NCLP PC AA04-05, WELD COUNTY, COLORADO**  
**REM # 30352**

Sample ID	Sample Date	Depth (ft bgs)	Arsenic (mg/kg)	Barium (mg/kg)	Cadmium (mg/kg)	Chromium (VI) (mg/kg)	Copper (mg/kg)	Lead (mg/kg)	Nickel (mg/kg)	Selenium (mg/kg)	Silver (mg/kg)	Zinc (mg/kg)
ECMC Table 915-1 Limits (Residential SSL)			0.68	15000	71	0.3	3100	400	1500	390	390	23000
ECMC Table 915-1 Limits (Protection of Groundwater)			0.29	82	0.38	0.00067	46	14	26	0.26	0.8	370
Background-01@2' †	10/16/2023	2	5.66	NA	NA	NA	NA	NA	NA	NA	NA	NA
WH-FS-01@8' †	10/16/2023	8	4.00	38.9	< 0.0960	< 0.310* U	29.5	< 9.60	< 9.60	< 0.0960	< 0.0960	< 96.0
1.25x Maximum Background Concentration			7.075	NA	NA	NA	NA	NA	NA	NA	NA	NA

Notes:

1. **Bold** faced values exceed the ECMC Table 915-1 limit(s), but are within 1.25x background concentrations.
2. **Red** faced values exceed the ECMC Table 915-1 limit(s) and native background concentrations.
3. Red & blue highlighted soil analytical values indicate an exceedance of the referenced soil screening level (SSL).
4. Non-detect background results accounted for in the highest background concentration by using the reporting limit.

ECMC = Energy and Carbon Management Commission

(<) = Analytical result is less than the indicated laboratory reporting limit.

ft bgs = Feet below ground surface

mg/kg = Milligrams per kilogram

\* Indicates laboratory reporting limit in excess of SSL

NA = Not analyzed

Assume wet weight on all historical data unless the lab data specifies wet vs. dry.

† = EAGLE

Qualifier Definition(s)

**Origins Laboratory, Inc:**

U = Sample is Non-Detect.

APPENDIX B

ALTERED ANALYTICAL LABORATORY  
REPORT SUBMITTED BY EAGLE TO ECMC



October 31, 2023

Eagle Environmental Consulting, LLC

Andrew Newberry

8000 W 44th Ave

Wheat Ridge CO 80033

Project Name - Noble - NCLP PC #AA04-05

Project Number - [none]

Attached are your analytical results for Noble - NCLP PC #AA04-05 received by Origins Laboratory, Inc. October 16, 2023. This project is associated with Origins project number Y310441-01.

The analytical results in the following report were analyzed under the guidelines of EPA Methods. These methods are identified as follows; "SW" are defined in SW-846, "EPA" are defined in 40CFR part 136 and "SM" are defined in the most current revision of Standard Methods For the Examination of Water and Wastewater.

The analytical results apply specifically to the samples and analyses specified per the attached Chain of Custody. As such, this report shall not be reproduced except in full, without the written approval of Origin's laboratory.

Unless otherwise noted, the analytical results for all soil samples are reported on a wet weight basis. All analytical analyses were performed under NELAP guidelines unless noted by a data qualifier.

Any holding time exceedances, deviations from the method specifications or deviations from Origins Laboratory's Standard Operating Procedures are outlined in the case narrative.

Thank you for selecting Origins for your analytical needs. Please contact us with any questions concerning this report, or if we can help with anything at all.

Origins Laboratory, Inc.  
303.433.1322  
o-squad@oelabinc.com



1725 Elk Place, Denver, CO 80211 | Phone: 303.433.1322 | Fax: 303.265.9645

Eagle Environmental Consulting, LLC  
8000 W 44th Ave  
Wheat Ridge CO 80033

Andrew Newberry  
Project Number: [none]  
Project: Noble - NCLP PC #AA04-05

CROSS REFERENCE REPORT

Sample ID	Laboratory ID	Matrix	Date Sampled	Date Received
WH-FS-01@8'	Y310441-01	Soil	October 16, 2023 13:35	10/16/2023 15:45

Origins Laboratory, Inc.



*The results in this report apply to the samples analyzed in accordance with the chain of custody document. This analytical report must be reproduced in its entirety.*



Eagle Environmental Consulting, LLC  
 8000 W 44th Ave  
 Wheat Ridge CO 80033

Andrew Newberry  
 Project Number: [none]  
 Project: Noble - NCLP PC #AA04-05

Origins Laboratory

F-012207-01-R1  
 Effective Date: 01/09/12

**Sample Receipt Checklist**

Origins Work Order: YB10441 Client: Eagle  
 Client Project ID: NCLP PC #AA04-05  
 Checklist Completed by: TJH/EHS Shipped Via: FD  
 Date/time completed: 10/17/23 (UPS, FedEx, Hand Delivered, Pick-up, etc.)  
 Airbill #: N/A  
 Matrix(s) Received: (Check all that apply): X Soil/Solid      Water      Other:       
 Cooler Number/Temperature: 1, 4.3 °C /      °C /      °C (Describe) °C  
 Thermometer ID: T004

Requirement Description	Yes	No	N/A	Comments (if any)
If samples require cooling, was the temperature between 0°C to ≤ 6°C <sup>(1)</sup> ?	/			
Is there ice present (document if blue ice is used)	/			
Are custody seals present on cooler? (if so, document in comments if they are signed and dated, broken or intact)		/		
Are custody seals present on each sample container? (if so, document in comments if they are signed and dated, broken or intact)		/		
Were all samples received intact <sup>(1)</sup> ?	/			
Was adequate sample volume provided <sup>(1)</sup> ?	/			
Are short holding time analytes or samples with HTs due within 48 hours present <sup>(1)</sup> ?		/		
Is a chain-of-custody (COC) present and filled out completely <sup>(1)</sup> ?	/			
Does the COC agree with the number and type of sample bottles received <sup>(1)</sup> ?	/			
Do the sample IDs on the bottle labels match the COC <sup>(1)</sup> ?	/			
Is the COC properly relinquished by the client with date and time recorded <sup>(1)</sup> ?	/			
For volatiles in water – is there headspace (> ¼ inch bubble) present? <b>If yes, contact client and note in narrative.</b>			/	
Are samples preserved that require preservation and was it checked <sup>(1)</sup> ? (note ID of confirmation instrument used in comments) / (preservation is not confirmed for subcontracted analyses in order to insure sample integrity)/(pH <2 for samples preserved with HNO3, HCL, H2SO4) / (pH >10 for samples preserved with NaAsO2+NaOH, ZnAc+NaOH)			/	
Additional Comments (if any):				

<sup>(1)</sup>If NO, then contact the client before proceeding with analysis and note date, time and person contacted as well as the corrective action to in the additional comments (above) and the case narrative.

Reviewed by (Project Manager) [Signature]

Date/Time Reviewed 10/18/23

Origins Laboratory, Inc.

[Signature]

The results in this report apply to the samples analyzed in accordance with the chain of custody document. This analytical report must be reproduced in its entirety.

Eagle Environmental Consulting, LLC  
 8000 W 44th Ave  
 Wheat Ridge CO 80033

Andrew Newberry  
 Project Number: [none]  
 Project: Noble - NCLP PC #AA04-05

**WH-FS-01@8'**  
**10/16/2023 1:35:00PM**

Analyte	Result	Min Detection Limit	Reporting Limit	Units	Dilution	Batch	Prepared	Analyzed	Notes
---------	--------	---------------------	-----------------	-------	----------	-------	----------	----------	-------

**Origins Laboratory, Inc.**  
**Y310441-01 (Soil)**

**Boron (DTPA Sorbitol)**

Boron	0.110		0.100	mg/L	1	B3J1810	10/18/2023	10/19/2023	
-------	-------	--	-------	------	---	---------	------------	------------	--

**DRO/ORO by EPA 8015D**

Diesel (C10-C28)	ND		25.0	mg/kg	1	B3J1702	10/17/2023	10/19/2023	Ua
Residual Range Organics (C28-C40)	ND		100	"	"	"	"	"	Ua

Surrogate: o-Terphenyl	73.9 %		50-150			"	"	"	
------------------------	--------	--	--------	--	--	---	---	---	--

**GBTEX+TMBs by 8260D**

1,2,4-Trimethylbenzene	ND		0.00200	mg/kg	1	B3J1707	10/17/2023	10/18/2023	Ua
1,3,5-Trimethylbenzene	ND		0.00200	"	"	"	"	"	Ua
Benzene	ND		0.00200	"	"	"	"	"	Ua
Ethylbenzene	ND		0.00200	"	"	"	"	"	Ua
Naphthalene	ND		0.00380	"	"	"	"	"	Ua
Toluene	ND		0.00200	"	"	"	"	"	Ua
Xylenes, total	ND		0.00200	"	"	"	"	"	Ua
Gasoline Range Hydrocarbons	ND		0.200	"	"	"	"	"	Ua

Origins Laboratory, Inc.



*The results in this report apply to the samples analyzed in accordance with the chain of custody document. This analytical report must be reproduced in its entirety.*

Eagle Environmental Consulting, LLC  
 8000 W 44th Ave  
 Wheat Ridge CO 80033

Andrew Newberry  
 Project Number: [none]  
 Project: Noble - NCLP PC #AA04-05

**WH-FS-01@8'**

**10/16/2023 1:35:00PM**

Analyte	Result	Min Detection Limit	Reporting Limit	Units	Dilution	Batch	Prepared	Analyzed	Notes
---------	--------	---------------------	-----------------	-------	----------	-------	----------	----------	-------

**Origins Laboratory, Inc.**  
**Y310441-01 (Soil)**

**GBTEX+TMBs by 8260D**

Surrogate: 1,2-Dichloroethane-d4	114 %		70-130			B3J17 07	10/17/2023	10/18/2023	
Surrogate: Toluene-d8	87.5 %		70-130			"	"	"	
Surrogate: 4-Bromofluorobenzene	98.8 %		70-130			"	"	"	

**Metals by Saturated Paste by EPA 6010**

Calcium	2.43		0.499	meq/L	10	[CALC]	10/18/2023	10/19/2023	
Magnesium	1.14		0.823	"	"	"	"	"	
Sodium	2.97		0.435	"	"	"	"	"	

**PAH by EPA 8270E**

1-Methylnaphthalene	ND		0.002	mg/kg	1	B3J1821	10/18/2023	10/26/2023	Ua
2-Methylnaphthalene	ND		0.002	"	"	"	"	"	Ua
Acenaphthene	ND		0.020	"	"	"	"	"	Ua
Anthracene	ND		0.020	"	"	"	"	"	Ua
Benzo (a) anthracene	ND		0.005	"	"	"	"	"	Ua
Benzo (a) pyrene	ND		0.020	"	"	"	"	"	Ua
Benzo (b) fluoranthene	ND		0.020	"	"	"	"	"	Ua
Benzo (k) fluoranthene	ND		0.020	"	"	"	"	"	Ua
Chrysene	ND		0.020	"	"	"	"	"	Ua
Dibenz (a,h) anthracene	ND		0.020	"	"	"	"	"	Ua

Origins Laboratory, Inc.



The results in this report apply to the samples analyzed in accordance with the chain of custody document. This analytical report must be reproduced in its entirety.

Eagle Environmental Consulting, LLC  
 8000 W 44th Ave  
 Wheat Ridge CO 80033

Andrew Newberry  
 Project Number: [none]  
 Project: Noble - NCLP PC #AA04-05

**WH-FS-01@8'**

**10/16/2023 1:35:00PM**

Analyte	Result	Min Detection Limit	Reporting Limit	Units	Dilution	Batch	Prepared	Analyzed	Notes
---------	--------	---------------------	-----------------	-------	----------	-------	----------	----------	-------

**Origins Laboratory, Inc.**  
**Y310441-01 (Soil)**

**PAH by EPA 8270E**

Fluoranthene	ND		0.020	mg/kg	1	B3J1821	10/18/2023	10/26/2023	Ua
Fluorene	ND		0.020	"	"	"	"	"	Ua
Indeno (1,2,3-cd) pyrene	ND		0.020	"	"	"	"	"	Ua
Pyrene	ND		0.020	"	"	"	"	"	Ua

Surrogate: Fluorene-d10	95.0 %		60-130			"	"	"	
Surrogate: Anthracene-d10	95.8 %		60-130			"	"	"	
Surrogate: Pyrene-d10	132 %		60-130			"	"	"	S-04
Surrogate: Benzo (a) pyrene-d12	99.6 %		60-130			"	"	"	

**pH in Soil by 9045D**

pH	8.09			pH Units	1	B3J1813	10/18/2023	10/19/2023	
----	------	--	--	----------	---	---------	------------	------------	--

**SAR by 20B Saturated Paste**

SAR	2.23		0.0100	SAR	1	B3J1806	10/18/2023	10/19/2023	
-----	------	--	--------	-----	---	---------	------------	------------	--

**Specific Conductance Mod. 9050A**

Specific Conductance (EC)	0.660		0.00500	mmhos/cm	1	B3J1813	10/18/2023	10/19/2023	
---------------------------	-------	--	---------	----------	---	---------	------------	------------	--

**Table 915 metals by EPA 6020B**

Origins Laboratory, Inc.



The results in this report apply to the samples analyzed in accordance with the chain of custody document. This analytical report must be reproduced in its entirety.

Eagle Environmental Consulting, LLC  
 8000 W 44th Ave  
 Wheat Ridge CO 80033

Andrew Newberry  
 Project Number: [none]  
 Project: Noble - NCLP PC #AA04-05

**WH-FS-01@8'**

**10/16/2023 1:35:00PM**

Analyte	Result	Min Detection Limit	Reporting Limit	Units	Dilution	Batch	Prepared	Analyzed	Notes
---------	--------	---------------------	-----------------	-------	----------	-------	----------	----------	-------

**Origins Laboratory, Inc.**  
**Y310441-01 (Soil)**

**Table 915 metals by EPA 6020B**

Arsenic	1.64		0.0960	mg/kg	10	B3J1720	10/17/2023	10/20/2023	
Barium	38.9		9.60	"	"	"	"	"	
Cadmium	ND		0.0960	"	"	"	"	"	
Copper	29.5		9.60	"	"	"	"	"	
Lead	ND		9.60	"	"	"	"	"	
Nickel	ND		9.60	"	"	"	"	"	
Selenium	ND		0.0960	"	"	"	"	"	
Silver	ND		0.0960	"	"	"	"	"	
Zinc	ND		96.0	"	"	"	"	"	

**Total Metals by 7196A**

Hexavalent Chromium	ND	0.124	0.310	mg/kg dry	1	2510704	10/19/2023	10/19/2023	U
---------------------	----	-------	-------	-----------	---	---------	------------	------------	---

Origins Laboratory, Inc.



*The results in this report apply to the samples analyzed in accordance with the chain of custody document. This analytical report must be reproduced in its entirety.*

Eagle Environmental Consulting, LLC  
 8000 W 44th Ave  
 Wheat Ridge CO 80033

Andrew Newberry  
 Project Number: [none]  
 Project: Noble - NCLP PC #AA04-05

**Extractable Petroleum Hydrocarbons by 8015D - Quality Control**  
**Origins Laboratory, Inc.**

Analyte	Result	Reporting Limit	Units	Spike Level	Source Result	%REC	%REC Limits	RPD	RPD Limit	Notes
<b>Batch B3J1702 - EPA 3550B</b>										
<b>Blank (B3J1702-BLK1)</b>										
					Prepared: 10/17/2023 Analyzed: 10/18/2023					
Diesel (C10-C28)	ND	25.0	mg/kg							Ua
Residual Range Organics (C28-C40)	ND	100	"							Ua
Surrogate: o-Terphenyl	28		"	24.9		112	50-150			

Origins Laboratory, Inc.



*The results in this report apply to the samples analyzed in accordance with the chain of custody document. This analytical report must be reproduced in its entirety.*

Eagle Environmental Consulting, LLC  
 8000 W 44th Ave  
 Wheat Ridge CO 80033

Andrew Newberry  
 Project Number: [none]  
 Project: Noble - NCLP PC #AA04-05

**Extractable Petroleum Hydrocarbons by 8015D - Quality Control**  
**Origins Laboratory, Inc.**

Analyte	Result	Reporting Limit	Units	Spike Level	Source Result	%REC	%REC Limits	RPD	RPD Limit	Notes
---------	--------	-----------------	-------	-------------	---------------	------	-------------	-----	-----------	-------

**Batch B3J1702 - EPA 3550B**

**LCS (B3J1702-BS1)**

Prepared: 10/17/2023 Analyzed: 10/18/2023

Diesel (C10-C28)	881	50.0	mg/kg	1000		88.1	70-130			
Residual Range Organics (C28-C40)	952	200	"	1000		95.2	70-130			
Surrogate: o-Terphenyl	40		"	49.8		80.0	50-150			

Origins Laboratory, Inc.



*The results in this report apply to the samples analyzed in accordance with the chain of custody document. This analytical report must be reproduced in its entirety.*

Eagle Environmental Consulting, LLC  
 8000 W 44th Ave  
 Wheat Ridge CO 80033

Andrew Newberry  
 Project Number: [none]  
 Project: Noble - NCLP PC #AA04-05

**Extractable Petroleum Hydrocarbons by 8015D - Quality Control**  
**Origins Laboratory, Inc.**

Analyte	Result	Reporting Limit	Units	Spike Level	Source Result	%REC	%REC Limits	RPD	RPD Limit	Notes
<b>Batch B3J1702 - EPA 3550B</b>										
<b>Matrix Spike (B3J1702-MS1)</b>		<b>Source: Y310434-01</b>			Prepared: 10/17/2023 Analyzed: 10/18/2023					
Diesel (C10-C28)	30800	50.0	mg/kg	1000	37900	NR	70-130			QM-07
Residual Range Organics (C28-C40)	42500	200	"	1000	38100	437	70-130			QM-07
Surrogate: o-Terphenyl	160		"	49.8		331	50-150			S-04

Origins Laboratory, Inc.



*The results in this report apply to the samples analyzed in accordance with the chain of custody document. This analytical report must be reproduced in its entirety.*

Eagle Environmental Consulting, LLC  
 8000 W 44th Ave  
 Wheat Ridge CO 80033

Andrew Newberry  
 Project Number: [none]  
 Project: Noble - NCLP PC #AA04-05

**Extractable Petroleum Hydrocarbons by 8015D - Quality Control**  
**Origins Laboratory, Inc.**

Analyte	Result	Reporting Limit	Units	Spike Level	Source Result	%REC	%REC Limits	RPD	RPD Limit	Notes
<b>Batch B3J1702 - EPA 3550B</b>										
<b>Matrix Spike Dup (B3J1702-MSD1)</b>					<b>Source: Y310434-01</b>					Prepared: 10/17/2023 Analyzed: 10/18/2023
Diesel (C10-C28)	28600	50.0	mg/kg	1000	37900	NR	70-130	7.49	35	QM-07
Residual Range Organics (C28-C40)	37500	200	"	1000	38100	NR	70-130	12.5	35	QM-07
Surrogate: o-Terphenyl	410		"	49.8		824	50-150			S-04

Origins Laboratory, Inc.



*The results in this report apply to the samples analyzed in accordance with the chain of custody document. This analytical report must be reproduced in its entirety.*

Eagle Environmental Consulting, LLC  
 8000 W 44th Ave  
 Wheat Ridge CO 80033

Andrew Newberry  
 Project Number: [none]  
 Project: Noble - NCLP PC #AA04-05

**Extractable Petroleum Hydrocarbons by 8015D - Quality Control**  
**Origins Laboratory, Inc.**

Analyte	Result	Reporting Limit	Units	Spike Level	Source Result	%REC	%REC Limits	RPD	RPD Limit	Notes
---------	--------	-----------------	-------	-------------	---------------	------	-------------	-----	-----------	-------

**Batch B3J1707 - EPA 5030 (soil)**

**Blank (B3J1707-BLK1)**

Prepared: 10/17/2023 Analyzed: 10/17/2023

1,2,4-Trimethylbenzene	ND	0.00200	mg/kg							Ua
1,3,5-Trimethylbenzene	ND	0.00200	"							Ua
Benzene	ND	0.00200	"							Ua
Ethylbenzene	ND	0.00200	"							Ua
Naphthalene	ND	0.00380	"							Ua
Toluene	ND	0.00200	"							Ua
Xylenes, total	ND	0.00200	"							Ua
Gasoline Range Hydrocarbons	ND	0.200	"							Ua
Surrogate: 1,2-Dichloroethane-d4	0.14		"	0.125	115		70-130			
Surrogate: Toluene-d8	0.12		"	0.125	97.3		70-130			
Surrogate: 4-Bromofluorobenzene	0.12		"	0.125	94.0		70-130			

Origins Laboratory, Inc.



*The results in this report apply to the samples analyzed in accordance with the chain of custody document. This analytical report must be reproduced in its entirety.*

Eagle Environmental Consulting, LLC  
 8000 W 44th Ave  
 Wheat Ridge CO 80033

Andrew Newberry  
 Project Number: [none]  
 Project: Noble - NCLP PC #AA04-05

**Volatile Organic Compounds by GC/MS SW846 8260D - Quality Control**  
**Origins Laboratory, Inc.**

Analyte	Result	Reporting Limit	Units	Spike Level	Source Result	%REC	%REC Limits	RPD	RPD Limit	Notes
---------	--------	-----------------	-------	-------------	---------------	------	-------------	-----	-----------	-------

**Batch B3J1707 - EPA 5030 (soil)**

**LCS (B3J1707-BS1)**

Prepared: 10/17/2023 Analyzed: 10/17/2023

1,2,4-Trimethylbenzene	0.0892	0.00200	mg/kg	0.100		89.2	70-130			
1,3,5-Trimethylbenzene	0.0891	0.00200	"	0.100		89.1	70-130			
Benzene	0.0833	0.00200	"	0.100		83.3	70-130			
Ethylbenzene	0.0848	0.00200	"	0.100		84.8	70-130			
Naphthalene	0.0845	0.00380	"	0.100		84.5	70-130			
Toluene	0.0864	0.00200	"	0.100		86.4	70-130			
o-Xylene	0.0909	0.00200	"	0.100		90.9	70-130			
m,p-Xylene	0.178	0.00400	"	0.200		88.8	70-130			
Surrogate: 1,2-Dichloroethane-d4	0.14		"	0.125		115	70-130			
Surrogate: Toluene-d8	0.12		"	0.125		99.0	70-130			
Surrogate: 4-Bromofluorobenzene	0.12		"	0.125		94.4	70-130			

Origins Laboratory, Inc.



*The results in this report apply to the samples analyzed in accordance with the chain of custody document. This analytical report must be reproduced in its entirety.*

Eagle Environmental Consulting, LLC  
 8000 W 44th Ave  
 Wheat Ridge CO 80033

Andrew Newberry  
 Project Number: [none]  
 Project: Noble - NCLP PC #AA04-05

**Volatile Organic Compounds by GC/MS SW846 8260D - Quality Control**  
**Origins Laboratory, Inc.**

Analyte	Result	Reporting Limit	Units	Spike Level	Source Result	%REC	%REC Limits	RPD	RPD Limit	Notes
---------	--------	-----------------	-------	-------------	---------------	------	-------------	-----	-----------	-------

Batch B3J1707 - EPA 5030 (soil)

Matrix Spike (B3J1707-MS1)	Source: Y310415-21			Prepared: 10/17/2023 Analyzed: 10/18/2023						
1,2,4-Trimethylbenzene	0.0790	0.00200	mg/kg	0.100	ND	79.0	70-130			
1,3,5-Trimethylbenzene	0.0767	0.00200	"	0.100	ND	76.7	70-130			
Benzene	0.0985	0.00200	"	0.100	ND	98.5	70-130			
Ethylbenzene	0.0877	0.00200	"	0.100	ND	87.7	70-130			
Naphthalene	0.0906	0.00380	"	0.100	ND	90.6	70-130			
Toluene	0.0910	0.00200	"	0.100	ND	91.0	70-130			
o-Xylene	0.0873	0.00200	"	0.100	ND	87.3	70-130			
m,p-Xylene	0.180	0.00400	"	0.200	ND	89.9	70-130			
Surrogate: 1,2-Dichloroethane-d4	0.13		"	0.125		105	70-130			
Surrogate: Toluene-d8	0.12		"	0.125		94.6	70-130			
Surrogate: 4-Bromofluorobenzene	0.13		"	0.125		103	70-130			

Origins Laboratory, Inc.



The results in this report apply to the samples analyzed in accordance with the chain of custody document. This analytical report must be reproduced in its entirety.

Eagle Environmental Consulting, LLC  
 8000 W 44th Ave  
 Wheat Ridge CO 80033

Andrew Newberry  
 Project Number: [none]  
 Project: Noble - NCLP PC #AA04-05

**Volatile Organic Compounds by GC/MS SW846 8260D - Quality Control**  
**Origins Laboratory, Inc.**

Analyte	Result	Reporting Limit	Units	Spike Level	Source Result	%REC	%REC Limits	RPD	RPD Limit	Notes
---------	--------	-----------------	-------	-------------	---------------	------	-------------	-----	-----------	-------

Batch B3J1707 - EPA 5030 (soil)

Matrix Spike Dup (B3J1707-MSD1)	Source: Y310415-21			Prepared: 10/17/2023 Analyzed: 10/18/2023						
1,2,4-Trimethylbenzene	0.0851	0.00200	mg/kg	0.100	ND	85.1	70-130	7.46	20	
1,3,5-Trimethylbenzene	0.0823	0.00200	"	0.100	ND	82.3	70-130	7.09	20	
Benzene	0.109	0.00200	"	0.100	ND	109	70-130	10.0	20	
Ethylbenzene	0.0963	0.00200	"	0.100	ND	96.3	70-130	9.32	20	
Naphthalene	0.102	0.00380	"	0.100	ND	102	70-130	11.4	20	
Toluene	0.0983	0.00200	"	0.100	ND	98.3	70-130	7.80	20	
o-Xylene	0.0962	0.00200	"	0.100	ND	96.2	70-130	9.61	20	
m,p-Xylene	0.197	0.00400	"	0.200	ND	98.7	70-130	9.25	20	
Surrogate: 1,2-Dichloroethane-d4	0.13		"	0.125		106	70-130			
Surrogate: Toluene-d8	0.12		"	0.125		93.3	70-130			
Surrogate: 4-Bromofluorobenzene	0.13		"	0.125		105	70-130			

Origins Laboratory, Inc.



*The results in this report apply to the samples analyzed in accordance with the chain of custody document. This analytical report must be reproduced in its entirety.*

Eagle Environmental Consulting, LLC  
 8000 W 44th Ave  
 Wheat Ridge CO 80033

Andrew Newberry  
 Project Number: [none]  
 Project: Noble - NCLP PC #AA04-05

**Volatile Organic Compounds by GC/MS SW846 8260D - Quality Control**  
**Origins Laboratory, Inc.**

Analyte	Result	Reporting Limit	Units	Spike Level	Source Result	%REC	%REC Limits	RPD	RPD Limit	Notes
---------	--------	-----------------	-------	-------------	---------------	------	-------------	-----	-----------	-------

**Metals by EPA 6000/7000 Series Methods - Quality Control**  
**Origins Laboratory, Inc.**

Analyte	Result	Reporting Limit	Units	Spike Level	Source Result	%REC	%REC Limits	RPD	RPD Limit	Notes
---------	--------	-----------------	-------	-------------	---------------	------	-------------	-----	-----------	-------

**Batch B3J1720 - EPA 3050B**

**Blank (B3J1720-BLK1)**

Prepared: 10/17/2023 Analyzed: 10/20/2023

Arsenic	ND	0.000100	mg/kg							
Barium	ND	0.0100	"							
Cadmium	ND	0.000100	"							
Copper	ND	0.0100	"							
Lead	ND	0.0100	"							
Nickel	ND	0.0100	"							
Selenium	ND	0.000100	"							
Silver	ND	0.000100	"							
Zinc	ND	0.100	"							

**LCS (B3J1720-BS1)**

Prepared: 10/17/2023 Analyzed: 10/20/2023

Arsenic	0.0497	0.000100	mg/kg	0.0500		99.4	80-120			
Barium	4.98	0.0100	"	5.00		99.5	80-120			
Cadmium	0.0509	0.000100	"	0.0500		102	80-120			
Copper	0.542	0.0100	"	0.500		108	80-120			
Lead	0.0504	0.0100	"	0.0500		101	80-120			
Nickel	0.0491	0.0100	"	0.0500		98.2	80-120			
Selenium	0.0478	0.000100	"	0.0500		95.7	80-120			
Silver	0.0479	0.000100	"	0.0500		95.8	80-120			
Zinc	0.506	0.100	"	0.500		101	80-120			

**Matrix Spike (B3J1720-MS1)**

Source: Y310404-03

Prepared: 10/17/2023 Analyzed: 10/20/2023

Origins Laboratory, Inc.



*The results in this report apply to the samples analyzed in accordance with the chain of custody document. This analytical report must be reproduced in its entirety.*

Eagle Environmental Consulting, LLC  
 8000 W 44th Ave  
 Wheat Ridge CO 80033

Andrew Newberry  
 Project Number: [none]  
 Project: Noble - NCLP PC #AA04-05

**Metals by EPA 6000/7000 Series Methods - Quality Control**  
**Origins Laboratory, Inc.**

Analyte	Result	Reporting Limit	Units	Spike Level	Source Result	%REC	%REC Limits	RPD	RPD Limit	Notes
---------	--------	-----------------	-------	-------------	---------------	------	-------------	-----	-----------	-------

**Batch B3J1720 - EPA 3050B**

<b>Matrix Spike (B3J1720-MS1)</b>		<b>Source: Y310404-03</b>			<b>Prepared: 10/17/2023 Analyzed: 10/20/2023</b>					
Arsenic	6.53	0.0946	mg/kg	4.73	1.71	102	75-125			
Barium	546	9.46	"	473	58.5	103	75-125			
Cadmium	5.05	0.0946	"	4.73	0.0499	106	75-125			
Copper	55.5	9.46	"	47.3	3.95	109	75-125			
Lead	9.83	9.46	"	4.73	5.29	96.1	75-125			
Nickel	9.76	9.46	"	4.73	5.09	98.8	75-125			
Selenium	4.49	0.0946	"	4.73	0.0634	93.5	75-125			
Silver	4.64	0.0946	"	4.73	0.0317	97.4	75-125			
Zinc	71.3	94.6	"	47.3	21.0	106	75-125			
<b>Matrix Spike Dup (B3J1720-MSD1)</b>		<b>Source: Y310404-03</b>			<b>Prepared: 10/17/2023 Analyzed: 10/20/2023</b>					
Arsenic	6.41	0.0930	mg/kg	4.65	1.71	101	75-125	1.86	20	
Barium	524	9.30	"	465	58.5	100	75-125	4.09	20	
Cadmium	4.81	0.0930	"	4.65	0.0499	102	75-125	4.75	20	
Copper	53.2	9.30	"	46.5	3.95	106	75-125	4.32	20	
Lead	10.0	9.30	"	4.65	5.29	102	75-125	1.96	20	
Nickel	10.1	9.30	"	4.65	5.09	107	75-125	3.19	20	
Selenium	4.40	0.0930	"	4.65	0.0634	93.4	75-125	1.87	20	
Silver	4.43	0.0930	"	4.65	0.0317	94.7	75-125	4.52	20	
Zinc	69.6	93.0	"	46.5	21.0	105	75-125	2.35	20	

Origins Laboratory, Inc.



*The results in this report apply to the samples analyzed in accordance with the chain of custody document. This analytical report must be reproduced in its entirety.*

Eagle Environmental Consulting, LLC  
 8000 W 44th Ave  
 Wheat Ridge CO 80033

Andrew Newberry  
 Project Number: [none]  
 Project: Noble - NCLP PC #AA04-05

**EPA 8270E (SW846) - Semivolatile Organic Compounds - Quality Control**  
**Origins Laboratory, Inc.**

Analyte	Result	Reporting Limit	Units	Spike Level	Source Result	%REC	%REC Limits	RPD	RPD Limit	Notes
---------	--------	-----------------	-------	-------------	---------------	------	-------------	-----	-----------	-------

**Batch B3J1821 - EPA 3580**

**Blank (B3J1821-BLK1)**

Prepared: 10/18/2023 Analyzed: 10/26/2023

1-Methylnaphthalene	ND	0.002	mg/kg							Ua
2-Methylnaphthalene	ND	0.002	"							Ua
Acenaphthene	ND	0.020	"							Ua
Anthracene	ND	0.020	"							Ua
Benzo (a) anthracene	ND	0.005	"							Ua
Benzo (a) pyrene	ND	0.020	"							Ua
Benzo (b) fluoranthene	ND	0.020	"							Ua
Benzo (g,h,i) perylene	ND	0.020	"							Ua
Benzo (k) fluoranthene	ND	0.020	"							Ua
Chrysene	ND	0.020	"							Ua
Dibenz (a,h) anthracene	ND	0.020	"							Ua
Fluoranthene	ND	0.020	"							Ua
Fluorene	ND	0.020	"							Ua
Indeno (1,2,3-cd) pyrene	ND	0.020	"							Ua
Naphthalene	ND	0.002	"							Ua
Phenanthrene	ND	0.020	"							Ua
Pyrene	ND	0.020	"							Ua
Surrogate: Fluorene-d10	190		ug/kg	200		97.0	60-130			
Surrogate: Anthracene-d10	200		"	200		99.8	60-130			
Surrogate: Pyrene-d10	260		"	200		129	60-130			
Surrogate: Benzo (a) pyrene-d12	190		"	200		96.1	60-130			

**LCS (B3J1821-BS1)**

Prepared: 10/18/2023 Analyzed: 10/26/2023

1-Methylnaphthalene	0.193	0.002	mg/kg	0.200		96.6	70-130			
2-Methylnaphthalene	0.191	0.002	"	0.200		95.5	70-130			
Acenaphthene	0.195	0.020	"	0.200		97.6	70-130			
Anthracene	0.172	0.020	"	0.200		86.1	70-130			

Origins Laboratory, Inc.



The results in this report apply to the samples analyzed in accordance with the chain of custody document. This analytical report must be reproduced in its entirety.

Eagle Environmental Consulting, LLC  
 8000 W 44th Ave  
 Wheat Ridge CO 80033

Andrew Newberry  
 Project Number: [none]  
 Project: Noble - NCLP PC #AA04-05

**EPA 8270E (SW846) - Semivolatile Organic Compounds - Quality Control**  
**Origins Laboratory, Inc.**

Analyte	Result	Reporting Limit	Units	Spike Level	Source Result	%REC	%REC Limits	RPD	RPD Limit	Notes
---------	--------	-----------------	-------	-------------	---------------	------	-------------	-----	-----------	-------

**Batch B3J1821 - EPA 3580**

**LCS (B3J1821-BS1)**

Prepared: 10/18/2023 Analyzed: 10/26/2023

Benzo (a) anthracene	0.168	0.005	mg/kg	0.200		83.8	70-130			
Benzo (a) pyrene	0.204	0.020	"	0.200		102	70-130			
Benzo (b) fluoranthene	0.203	0.020	"	0.200		102	70-130			
Benzo (g,h,i) perylene	0.197	0.020	"	0.200		98.3	70-130			
Benzo (k) fluoranthene	0.168	0.020	"	0.200		84.1	70-130			
Chrysene	0.183	0.020	"	0.200		91.4	70-130			
Dibenz (a,h) anthracene	0.190	0.020	"	0.200		95.0	70-130			
Fluoranthene	0.178	0.020	"	0.200		88.9	70-130			
Fluorene	0.195	0.020	"	0.200		97.3	70-130			
Indeno (1,2,3-cd) pyrene	0.203	0.020	"	0.200		102	70-130			
Naphthalene	0.198	0.002	"	0.200		98.9	70-130			
Phenanthrene	0.194	0.020	"	0.200		96.8	70-130			
Pyrene	0.228	0.020	"	0.200		114	70-130			
Surrogate: Fluorene-d10	200		ug/kg	200		99.3	60-130			
Surrogate: Anthracene-d10	200		"	200		99.0	60-130			
Surrogate: Pyrene-d10	250		"	200		123	60-130			
Surrogate: Benzo (a) pyrene-d12	200		"	200		100	60-130			

**Matrix Spike (B3J1821-MS1)**

Source: Y310437-01

Prepared: 10/18/2023 Analyzed: 10/26/2023

1-Methylnaphthalene	0.186	0.002	mg/kg	0.200	ND	93.0	70-130			
2-Methylnaphthalene	0.181	0.002	"	0.200	ND	90.4	70-130			
Acenaphthene	0.190	0.020	"	0.200	ND	95.0	70-130			
Anthracene	0.161	0.020	"	0.200	0.001	79.9	70-130			
Benzo (a) anthracene	0.189	0.005	"	0.200	ND	94.3	70-130			
Benzo (a) pyrene	0.193	0.020	"	0.200	ND	96.5	70-130			
Benzo (b) fluoranthene	0.181	0.020	"	0.200	ND	90.7	70-130			
Benzo (g,h,i) perylene	0.195	0.020	"	0.200	ND	97.3	70-130			

Origins Laboratory, Inc.



The results in this report apply to the samples analyzed in accordance with the chain of custody document. This analytical report must be reproduced in its entirety.

Eagle Environmental Consulting, LLC  
 8000 W 44th Ave  
 Wheat Ridge CO 80033

Andrew Newberry  
 Project Number: [none]  
 Project: Noble - NCLP PC #AA04-05

**EPA 8270E (SW846) - Semivolatile Organic Compounds - Quality Control**  
**Origins Laboratory, Inc.**

Analyte	Result	Reporting Limit	Units	Spike Level	Source Result	%REC	%REC Limits	RPD	RPD Limit	Notes
---------	--------	-----------------	-------	-------------	---------------	------	-------------	-----	-----------	-------

**Batch B3J1821 - EPA 3580**

<b>Matrix Spike (B3J1821-MS1)</b>		<b>Source: Y310437-01</b>			Prepared: 10/18/2023 Analyzed: 10/26/2023					
Benzo (k) fluoranthene	0.170	0.020	mg/kg	0.200	ND	84.9	70-130			
Chrysene	0.183	0.020	"	0.200	ND	91.5	70-130			
Dibenz (a,h) anthracene	0.195	0.020	"	0.200	ND	97.7	70-130			
Fluoranthene	0.187	0.020	"	0.200	ND	93.5	70-130			
Fluorene	0.191	0.020	"	0.200	ND	95.4	70-130			
Indeno (1,2,3-cd) pyrene	0.178	0.020	"	0.200	ND	89.1	70-130			
Naphthalene	0.189	0.002	"	0.200	ND	94.6	70-130			
Phenanthrene	0.181	0.020	"	0.200	ND	90.6	70-130			
Pyrene	0.198	0.020	"	0.200	ND	99.1	70-130			
Surrogate: Fluorene-d10	200		ug/kg	200		101	60-130			
Surrogate: Anthracene-d10	200		"	200		98.9	60-130			
Surrogate: Pyrene-d10	210		"	200		106	60-130			
Surrogate: Benzo (a) pyrene-d12	200		"	200		101	60-130			

<b>Matrix Spike Dup (B3J1821-MSD1)</b>		<b>Source: Y310437-01</b>			Prepared: 10/18/2023 Analyzed: 10/26/2023					
1-Methylnaphthalene	0.190	0.002	mg/kg	0.200	ND	95.2	70-130	2.36	20	
2-Methylnaphthalene	0.191	0.002	"	0.200	ND	95.3	70-130	5.31	20	
Acenaphthene	0.196	0.020	"	0.200	ND	97.9	70-130	2.95	20	
Anthracene	0.172	0.020	"	0.200	0.001	85.3	70-130	6.57	20	
Benzo (a) anthracene	0.171	0.005	"	0.200	ND	85.3	70-130	10.0	20	
Benzo (a) pyrene	0.210	0.020	"	0.200	ND	105	70-130	8.27	20	
Benzo (b) fluoranthene	0.205	0.020	"	0.200	ND	103	70-130	12.2	20	
Benzo (g,h,i) perylene	0.199	0.020	"	0.200	ND	99.4	70-130	2.11	20	
Benzo (k) fluoranthene	0.174	0.020	"	0.200	ND	86.9	70-130	2.29	20	
Chrysene	0.185	0.020	"	0.200	ND	92.4	70-130	0.973	20	
Dibenz (a,h) anthracene	0.193	0.020	"	0.200	ND	96.6	70-130	1.12	20	
Fluoranthene	0.177	0.020	"	0.200	ND	88.3	70-130	5.73	20	

Origins Laboratory, Inc.



The results in this report apply to the samples analyzed in accordance with the chain of custody document. This analytical report must be reproduced in its entirety.

Eagle Environmental Consulting, LLC  
 8000 W 44th Ave  
 Wheat Ridge CO 80033

Andrew Newberry  
 Project Number: [none]  
 Project: Noble - NCLP PC #AA04-05

**EPA 8270E (SW846) - Semivolatile Organic Compounds - Quality Control**  
**Origins Laboratory, Inc.**

Analyte	Result	Reporting Limit	Units	Spike Level	Source Result	%REC	%REC Limits	RPD	RPD Limit	Notes
---------	--------	-----------------	-------	-------------	---------------	------	-------------	-----	-----------	-------

**Batch B3J1821 - EPA 3580**

<b>Matrix Spike Dup (B3J1821-MSD1)</b>	<b>Source: Y310437-01</b>			<b>Prepared: 10/18/2023 Analyzed: 10/26/2023</b>						
Fluorene	0.192	0.020	mg/kg	0.200	ND	95.9	70-130	0.532	20	
Indeno (1,2,3-cd) pyrene	0.175	0.020	"	0.200	ND	87.7	70-130	1.62	20	
Naphthalene	0.197	0.002	"	0.200	ND	98.6	70-130	4.07	20	
Phenanthrene	0.192	0.020	"	0.200	ND	96.1	70-130	5.80	20	
Pyrene	0.231	0.020	"	0.200	ND	115	70-130	15.2	20	
Surrogate: Fluorene-d10	200		ug/kg	200		99.3	60-130			
Surrogate: Anthracene-d10	200		"	200		97.7	60-130			
Surrogate: Pyrene-d10	250		"	200		125	60-130			
Surrogate: Benzo (a) pyrene-d12	200		"	200		99.9	60-130			

Origins Laboratory, Inc.



*The results in this report apply to the samples analyzed in accordance with the chain of custody document. This analytical report must be reproduced in its entirety.*

Eagle Environmental Consulting, LLC  
 8000 W 44th Ave  
 Wheat Ridge CO 80033

Andrew Newberry  
 Project Number: [none]  
 Project: Noble - NCLP PC #AA04-05

**Classical Chemistry Parameters - Quality Control**  
**Origins Laboratory, Inc.**

Analyte	Result	Reporting Limit	Units	Spike Level	Source Result	%REC	%REC Limits	RPD	RPD Limit	Notes
---------	--------	-----------------	-------	-------------	---------------	------	-------------	-----	-----------	-------

**Batch B3J1806 - Saturated Paste Metals**

**Blank (B3J1806-BLK1)**

Prepared: 10/18/2023 Analyzed: 10/19/2023

Calcium PPM	ND	10.0	mg/L							
SAR	ND	0.0100	SAR							
Magnesium PPM	ND	10.0	mg/L							
Sodium PPM	ND	10.0	"							

**Duplicate (B3J1806-DUP1)**

**Source: Y310437-01**

Prepared: 10/18/2023 Analyzed: 10/19/2023

SAR	ND	0.0100	SAR		2.04				200	
Calcium PPM	27.4	10.0	mg/L		29.2			6.64	50	
Magnesium PPM	4.54	10.0	"		4.75			4.52	50	
Sodium PPM	44.6	10.0	"		45.0			1.00	50	

**Batch B3J1810 - DTPA Sorbitol Preparation**

**Blank (B3J1810-BLK1)**

Prepared: 10/18/2023 Analyzed: 10/19/2023

Boron	ND	0.100	mg/L							
-------	----	-------	------	--	--	--	--	--	--	--

**Duplicate (B3J1810-DUP1)**

**Source: Y310437-01**

Prepared: 10/18/2023 Analyzed: 10/19/2023

Boron	0.677	0.100	mg/L		0.687			1.38	50	
-------	-------	-------	------	--	-------	--	--	------	----	--

Origins Laboratory, Inc.



*The results in this report apply to the samples analyzed in accordance with the chain of custody document. This analytical report must be reproduced in its entirety.*

Eagle Environmental Consulting, LLC  
 8000 W 44th Ave  
 Wheat Ridge CO 80033

Andrew Newberry  
 Project Number: [none]  
 Project: Noble - NCLP PC #AA04-05

**Saturated Paste - Quality Control**  
**Origins Laboratory, Inc.**

Analyte	Result	Reporting Limit	Units	Spike Level	Source Result	%REC	%REC Limits	RPD	RPD Limit	Notes
---------	--------	-----------------	-------	-------------	---------------	------	-------------	-----	-----------	-------

**Batch B3J1813 - Saturated Paste pH/EC**

**Blank (B3J1813-BLK1)**

Prepared: 10/18/2023 Analyzed: 10/19/2023

Specific Conductance (EC) ND 0.00500 mmhos/cm

**Duplicate (B3J1813-DUP1)**

**Source: Y310437-01**

Prepared: 10/18/2023 Analyzed: 10/19/2023

pH	8.19		pH Units		8.21			0.244	25	
Specific Conductance (EC)	0.366	0.00500	mmhos/cm		0.378			3.23	25	

Origins Laboratory, Inc.



*The results in this report apply to the samples analyzed in accordance with the chain of custody document. This analytical report must be reproduced in its entirety.*

Eagle Environmental Consulting, LLC  
 8000 W 44th Ave  
 Wheat Ridge CO 80033

Andrew Newberry  
 Project Number: [none]  
 Project: Noble - NCLP PC #AA04-05

**Total Metals by 7196A - Quality Control**  
**GEL Laboratories, LLC**

Analyte	Result	Reporting Limit	Units	Spike Level	Source Result	%REC	%REC Limits	RPD	RPD Limit	Notes
<b>Batch 2510704 - SW846 3060A</b>										
<b>BLANK (1205550314-BLK)</b>					Prepared: 10/19/2023 Analyzed: 10/19/2023					
Hexavalent Chromium	ND	0.329	mg/kg				-			U
<b>LCS (1205550315-BKS)</b>					Prepared: 10/19/2023 Analyzed: 10/19/2023					
Hexavalent Chromium	3.18	0.324	mg/kg	3.24		98.4	80-120			
<b>DUP (1205550318 D)</b>					Source: 641711001 Prepared: 10/19/2023 Analyzed: 10/19/2023					
Hexavalent Chromium	ND	0.310	mg/kg dry		<0.124		0-50	N/A	50	U
<b>MS (1205550319 S)</b>					Source: 641711001 Prepared: 10/19/2023 Analyzed: 10/19/2023					
Hexavalent Chromium	2.31	0.310	mg/kg dry	3.10	<0.124	73.4	75-125			
<b>ILCS (1205550320-ILCS)</b>					Prepared: 10/19/2023 Analyzed: 10/19/2023					
Hexavalent Chromium	5.96	0.302	mg/kg	6.17		96.6	80-120			

Origins Laboratory, Inc.



*The results in this report apply to the samples analyzed in accordance with the chain of custody document. This analytical report must be reproduced in its entirety.*

Eagle Environmental Consulting, LLC  
8000 W 44th Ave  
Wheat Ridge CO 80033

Andrew Newberry  
Project Number: [none]  
Project: Noble - NCLP PC #AA04-05

**Notes and Definitions**

Ua Sample is Non-Detect.

U Result not detected above the detection limit

S-04 The surrogate recovery for this sample is outside of established control limits due to a sample matrix effect.

QM-07 The spike recovery was outside acceptance limits for the MS and/or MSD. The batch was accepted based on acceptable LCS recovery.

ND Analyte NOT DETECTED at or above the reporting limit

RPD Relative Percent Difference

All soil results are reported on a wet weight basis.

Calculated results may use J-flag data (instead of reported "ND") as part of calculation to provide a more accurate result.

Origins Laboratory, Inc.



*The results in this report apply to the samples analyzed in accordance with the chain of custody document. This analytical report must be reproduced in its entirety.*

Jordan A. Bynon, Project Manager



November 21, 2023

**Eagle Environmental Consulting, LLC**

**Andrew Newberry**

**8000 W 44th Ave**

**Wheat Ridge CO 80033**

**Project Name - Noble - NCLP PC #AA04-05**

**Project Number - [none]**

Attached are your analytical results for Noble - NCLP PC #AA04-05 received by Origins Laboratory, Inc. November 02, 2023. This project is associated with Origins project number Y311075-01.

The analytical results in the following report were analyzed under the guidelines of EPA Methods. These methods are identified as follows; "SW" are defined in SW-846, "EPA" are defined in 40CFR part 136 and "SM" are defined in the most current revision of Standard Methods For the Examination of Water and Wastewater.

The analytical results apply specifically to the samples and analyses specified per the attached Chain of Custody. As such, this report shall not be reproduced except in full, without the written approval of Origin's laboratory.

Unless otherwise noted, the analytical results for all soil samples are reported on a wet weight basis. All analytical analyses were performed under NELAP guidelines unless noted by a data qualifier.

Any holding time exceedances, deviations from the method specifications or deviations from Origins Laboratory's Standard Operating Procedures are outlined in the case narrative.

Thank you for selecting Origins for your analytical needs. Please contact us with any questions concerning this report, or if we can help with anything at all.

Origins Laboratory, Inc.  
303.433.1322  
o-squad@oelabinc.com



1725 Elk Place, Denver, CO 80211 | Phone: 303.433.1322 | Fax: 303.265.9645

Eagle Environmental Consulting, LLC  
8000 W 44th Ave  
Wheat Ridge CO 80033

Andrew Newberry  
Project Number: [none]  
Project: Noble - NCLP PC #AA04-05

CROSS REFERENCE REPORT

Sample ID	Laboratory ID	Matrix	Date Sampled	Date Received
Background-01@2'	Y311075-01	Soil	October 16, 2023 13:37	11/02/2023 15:45

Origins Laboratory, Inc.



*The results in this report apply to the samples analyzed in accordance with the chain of custody document. This analytical report must be reproduced in its entirety.*



Eagle Environmental Consulting, LLC  
 8000 W 44th Ave  
 Wheat Ridge CO 80033

Andrew Newberry  
 Project Number: [none]  
 Project: Noble - NCLP PC #AA04-05

Origins Laboratory F-012207-01-R1  
Effective Date: 01/09/12

**Sample Receipt Checklist**


Origins Work Order: 4311075 Client: Eagle  
 Checklist Completed by: EHS Client Project ID: NCLP PC #AA04-05  
 Date/time completed: 11/2/23 Shipped Via: HD  
 (UPS, FedEx, Hand Delivered, Pick-up, etc.)  
 Airbill #: N/A

Matrix(s) Received: (Check all that apply):  Soil/Solid  Water  Other: \_\_\_\_\_  
 Cooler Number/Temperature: 11315 °c / \_\_\_\_\_ °c / \_\_\_\_\_ °c (Describe) \_\_\_\_\_ °c  
 Thermometer ID: 7004

Requirement Description	Yes	No	N/A	Comments (if any)
If samples require cooling, was the temperature between 0°C to ≤ 6°C <sup>(1)</sup> ?	<input checked="" type="checkbox"/>			
Is there ice present (document if blue ice is used)	<input checked="" type="checkbox"/>			
Are custody seals present on cooler? (if so, document in comments if they are signed and dated, broken or intact)		<input checked="" type="checkbox"/>		
Are custody seals present on each sample container? (if so, document in comments if they are signed and dated, broken or intact)		<input checked="" type="checkbox"/>		
Were all samples received intact <sup>(1)</sup> ?	<input checked="" type="checkbox"/>			
Was adequate sample volume provided <sup>(1)</sup> ?	<input checked="" type="checkbox"/>			
Are short holding time analytes or samples with HTs due within 48 hours present <sup>(1)</sup> ?		<input checked="" type="checkbox"/>		
Is a chain-of-custody (COC) present and filled out completely <sup>(1)</sup> ?	<input checked="" type="checkbox"/>			
Does the COC agree with the number and type of sample bottles received <sup>(1)</sup> ?	<input checked="" type="checkbox"/>			
Do the sample IDs on the bottle labels match the COC <sup>(1)</sup> ?	<input checked="" type="checkbox"/>			
Is the COC properly relinquished by the client with date and time recorded <sup>(1)</sup> ?	<input checked="" type="checkbox"/>			
For volatiles in water – is there headspace (> ¼ inch bubble) present? If yes, contact client and note in narrative.			<input checked="" type="checkbox"/>	
Are samples preserved that require preservation and was it checked <sup>(1)</sup> ? (note ID of confirmation instrument used in comments) / (preservation is not confirmed for subcontracted analysis in order to insure sample integrity) (pH < 2 for samples preserved with HNO <sub>3</sub> , HCL, H <sub>2</sub> SO <sub>4</sub> ) / (pH > 10 for samples preserved with NaAsO <sub>2</sub> +NaOH, ZnAc+NaOH)			<input checked="" type="checkbox"/>	
Additional Comments (if any):				

<sup>(1)</sup>if NO, then contact the client before proceeding with analysis and note date/time and person contacted as well as the corrective action to in the additional comments (above) and the case narrative.

Reviewed by: JB (Project Manager) Date/Time Reviewed: 11-6-23

Origins Laboratory, Inc.  


The results in this report apply to the samples analyzed in accordance with the chain of custody document. This analytical report must be reproduced in its entirety.

Eagle Environmental Consulting, LLC  
8000 W 44th Ave  
Wheat Ridge CO 80033

Andrew Newberry  
Project Number: [none]  
Project: Noble - NCLP PC #AA04-05

**Background-01@2'**  
**10/16/2023 1:37:00PM**

Analyte	Result	Reporting Limit	Units	Dilution	Batch	Analyst	Prepared	Analyzed	Notes
---------	--------	-----------------	-------	----------	-------	---------	----------	----------	-------

**Origins Laboratory, Inc.**  
**Y311075-01 (Soil)**

**Table 915 metals by EPA 6020B**

Arsenic	1.78	0.0884	mg/kg	10	B3K0730	CIH	11/07/2023	11/09/2023	
---------	------	--------	-------	----	---------	-----	------------	------------	--

Origins Laboratory, Inc.



*The results in this report apply to the samples analyzed in accordance with the chain of custody document. This analytical report must be reproduced in its entirety.*

Eagle Environmental Consulting, LLC  
 8000 W 44th Ave  
 Wheat Ridge CO 80033

Andrew Newberry  
 Project Number: [none]  
 Project: Noble - NCLP PC #AA04-05

**Metals by EPA 6000/7000 Series Methods - Quality Control**  
**Origins Laboratory, Inc.**

Analyte	Result	Reporting Limit	Units	Spike Level	Source Result	%REC	%REC Limits	RPD	RPD Limit	Notes
---------	--------	-----------------	-------	-------------	---------------	------	-------------	-----	-----------	-------

**Batch B3K0730 - EPA 3050B**

**Blank (B3K0730-BLK1)**

Prepared: 11/07/2023 Analyzed: 11/09/2023

Arsenic	ND	0.000100	mg/kg							
Barium	ND	0.0100	"							
Cadmium	ND	0.000100	"							
Copper	ND	0.0100	"							
Lead	ND	0.0100	"							
Nickel	ND	0.0100	"							
Selenium	ND	0.000100	"							
Silver	ND	0.000100	"							
Zinc	ND	0.100	"							

**LCS (B3K0730-BS1)**

Prepared: 11/07/2023 Analyzed: 11/09/2023

Arsenic	0.0479	0.000100	mg/kg	0.0500		95.8	80-120			
Barium	5.07	0.0100	"	5.00		101	80-120			
Cadmium	0.0522	0.000100	"	0.0500		104	80-120			
Copper	0.478	0.0100	"	0.500		95.6	80-120			
Lead	0.0504	0.0100	"	0.0500		101	80-120			
Nickel	0.0484	0.0100	"	0.0500		96.7	80-120			
Selenium	0.0517	0.000100	"	0.0500		103	80-120			
Silver	0.0486	0.000100	"	0.0500		97.2	80-120			
Zinc	0.438	0.100	"	0.500		87.6	80-120			

**Matrix Spike (B3K0730-MS1)**

**Source: Y311073-01**

Prepared: 11/07/2023 Analyzed: 11/09/2023

Arsenic	8.74	0.0970	mg/kg	4.85	3.98	98.3	75-125			
Barium	561	9.70	"	485	65.6	102	75-125			
Cadmium	5.09	0.0970	"	4.85	0.124	102	75-125			
Copper	54.3	9.70	"	48.5	6.29	99.1	75-125			
Lead	11.3	9.70	"	4.85	7.12	85.6	75-125			

Origins Laboratory, Inc.



*The results in this report apply to the samples analyzed in accordance with the chain of custody document. This analytical report must be reproduced in its entirety.*

Eagle Environmental Consulting, LLC  
 8000 W 44th Ave  
 Wheat Ridge CO 80033

Andrew Newberry  
 Project Number: [none]  
 Project: Noble - NCLP PC #AA04-05

**Metals by EPA 6000/7000 Series Methods - Quality Control**  
**Origins Laboratory, Inc.**

Analyte	Result	Reporting Limit	Units	Spike Level	Source Result	%REC	%REC Limits	RPD	RPD Limit	Notes
---------	--------	-----------------	-------	-------------	---------------	------	-------------	-----	-----------	-------

**Batch B3K0730 - EPA 3050B**

<b>Matrix Spike (B3K0730-MS1)</b>		<b>Source: Y311073-01</b>			<b>Prepared: 11/07/2023 Analyzed: 11/09/2023</b>					
Nickel	12.2	9.70	mg/kg	4.85	8.52	74.8	75-125			QM-07
Selenium	4.72	0.0970	"	4.85	0.0723	95.8	75-125			
Silver	4.62	0.0970	"	4.85	0.0265	94.7	75-125			
Zinc	74.2	97.0	"	48.5	29.9	91.4	75-125			
<b>Matrix Spike Dup (B3K0730-MSD1)</b>		<b>Source: Y311073-01</b>			<b>Prepared: 11/07/2023 Analyzed: 11/09/2023</b>					
Arsenic	9.04	0.0986	mg/kg	4.93	3.98	103	75-125	3.31	20	
Barium	579	9.86	"	493	65.6	104	75-125	3.23	20	
Cadmium	5.25	0.0986	"	4.93	0.124	104	75-125	3.10	20	
Copper	56.9	9.86	"	49.3	6.29	103	75-125	4.60	20	
Lead	11.3	9.86	"	4.93	7.12	85.7	75-125	0.676	20	
Nickel	12.7	9.86	"	4.93	8.52	84.2	75-125	4.25	20	
Selenium	5.17	0.0986	"	4.93	0.0723	103	75-125	9.16	20	
Silver	4.72	0.0986	"	4.93	0.0265	95.2	75-125	2.19	20	
Zinc	76.6	98.6	"	49.3	29.9	94.7	75-125	3.19	20	

Origins Laboratory, Inc.



*The results in this report apply to the samples analyzed in accordance with the chain of custody document. This analytical report must be reproduced in its entirety.*

Eagle Environmental Consulting, LLC  
8000 W 44th Ave  
Wheat Ridge CO 80033

Andrew Newberry  
Project Number: [none]  
Project: Noble - NCLP PC #AA04-05

---

### Notes and Definitions

QM-07 The spike recovery was outside acceptance limits for the MS and/or MSD. The batch was accepted based on acceptable LCS recovery.

ND Analyte NOT DETECTED at or above the reporting limit

RPD Relative Percent Difference

All soil results are reported at a wet weight basis.

Origins Laboratory, Inc.



*The results in this report apply to the samples analyzed in accordance with the chain of custody document. This analytical report must be reproduced in its entirety.*

---

Jordan A. Bynon, Project Manager