

Inspection Photos

Location Name: TEP ROCKY MOUNTAIN LLC FEDERAL-67S96W 8NWN (MV 15-8 Pad)

Location ID: 334805



Photo # 7672 From entrance to location



Photo # 7673 Location

Inspection Photos

Location Name: TEP ROCKY MOUNTAIN LLC FEDERAL-67S96W 8NWNE (MV 15-8 Pad)

Location ID: 334805



Photo # 7674 Location



Photo # 7675 Location

Inspection Photos

Location Name: TEP ROCKY MOUNTAIN LLC FEDERAL-67S96W 8NWNE (MV 15-8 Pad)

Location ID: 334805



Photo # 7676 Location



Photo # 7677 Location

Inspection Photos

Location Name: TEP ROCKY MOUNTAIN LLC FEDERAL-67S96W 8NWNE (MV 15-8 Pad)

Location ID: 334805



Photo # 7678 Location



Photo # 7679 Unused western pump near methanol tank

Inspection Photos

Location Name: TEP ROCKY MOUNTAIN LLC FEDERAL-67S96W 8NWNE (MV 15-8 Pad)

Location ID: 334805



Photo # 7680 Tank label on methanol tank faded & starting to become illegible & label lacks operator name

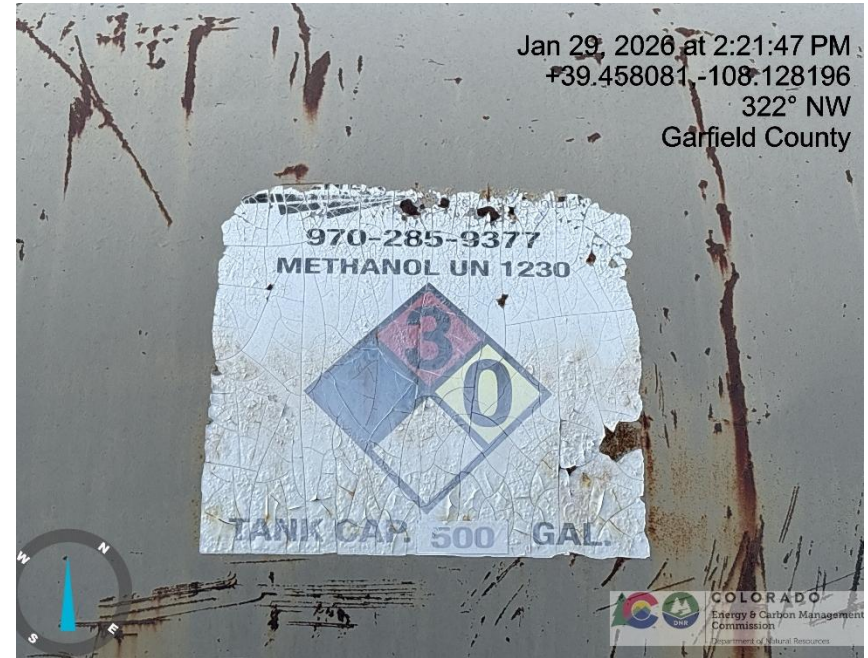


Photo # 7681 Tank label on methanol tank faded & starting to become illegible & label lacks operator name

Inspection Photos

Location Name: TEP ROCKY MOUNTAIN LLC FEDERAL-67S96W 8NWNE (MV 15-8 Pad)

Location ID: 334805



Photo # 7682 Methanol tank



Photo # 7683 Open ended load line

Inspection Photos

Location Name: TEP ROCKY MOUNTAIN LLC FEDERAL-67S96W 8NWNE (MV 15-8 Pad)

Location ID: 334805



Photo # 7684 Open ended load line



Photo # 7685 Open ended load line

Inspection Photos

Location Name: TEP ROCKY MOUNTAIN LLC FEDERAL-67S96W 8NWNE (MV 15-8 Pad)

Location ID: 334805



Photo # 7686 Open ended load line



Photo # 7687 Debris in tank battery secondary containment

Inspection Photos

Location Name: TEP ROCKY MOUNTAIN LLC FEDERAL-67S96W 8NWNE (MV 15-8 Pad)

Location ID: 334805



Photo # 7688 Debris in tank battery secondary containment



Photo # 7689 Majority of paint has peeled off 200 bbl tank & tank starting to rust

Inspection Photos

Location Name: TEP ROCKY MOUNTAIN LLC FEDERAL-67S96W 8NWNE (MV 15-8 Pad)

Location ID: 334805

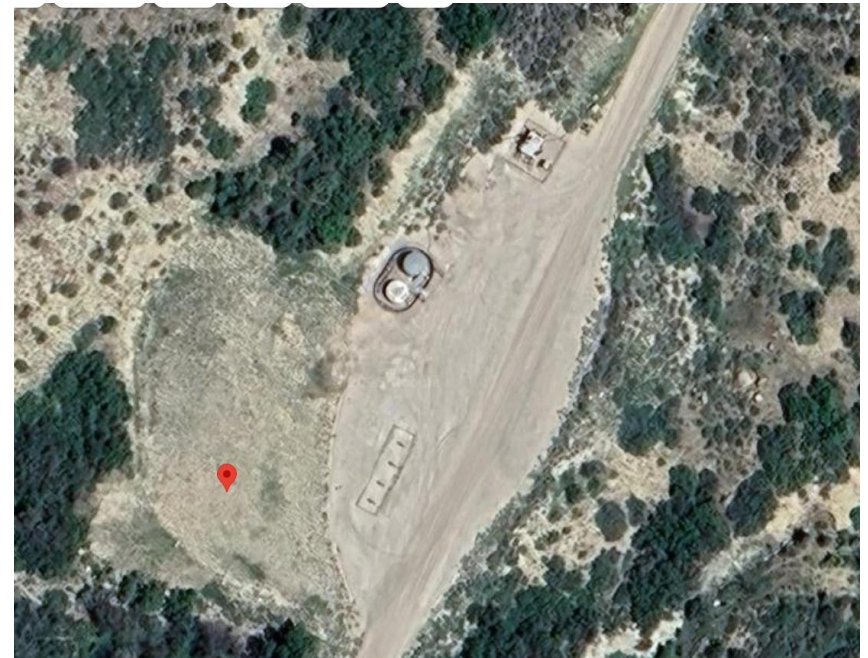


Photo # 7690 Scout Card records coordinates for the FEDERAL GM 331-8 well - Coordinates appear to be off by approximately 101 ft (coordinates incorrect/not in compliance with CECMC Rules 216 & 414 – records require updating)

Photo # 7691 Scout Card records coordinates for the FEDERAL GM 331-8 well - Coordinates appear to be off by approximately 101 ft (coordinates incorrect/not in compliance with CECMC Rules 216 & 414 – records require updating)

Inspection Photos

Location Name: TEP ROCKY MOUNTAIN LLC FEDERAL-67S96W 8NWNE (MV 15-8 Pad)

Location ID: 334805

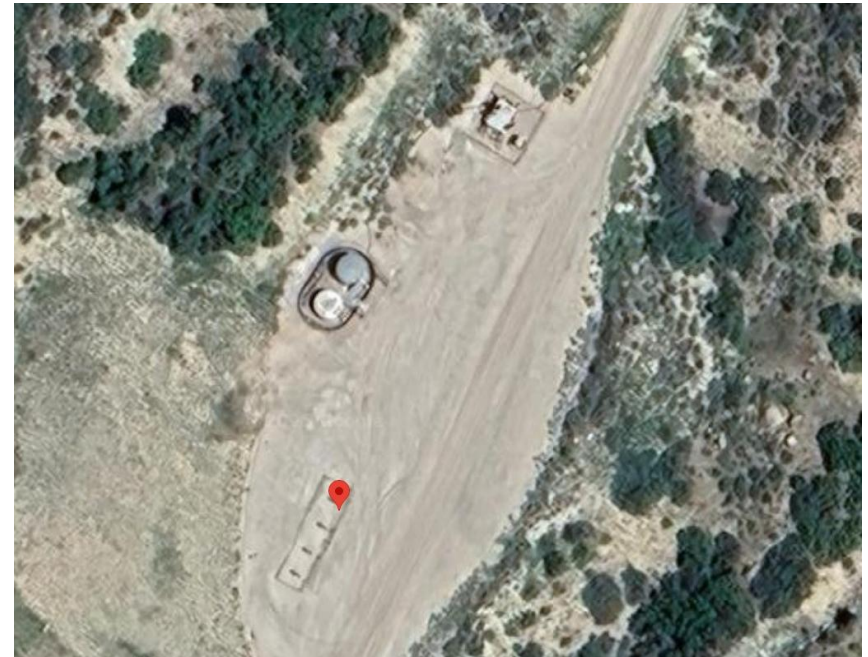
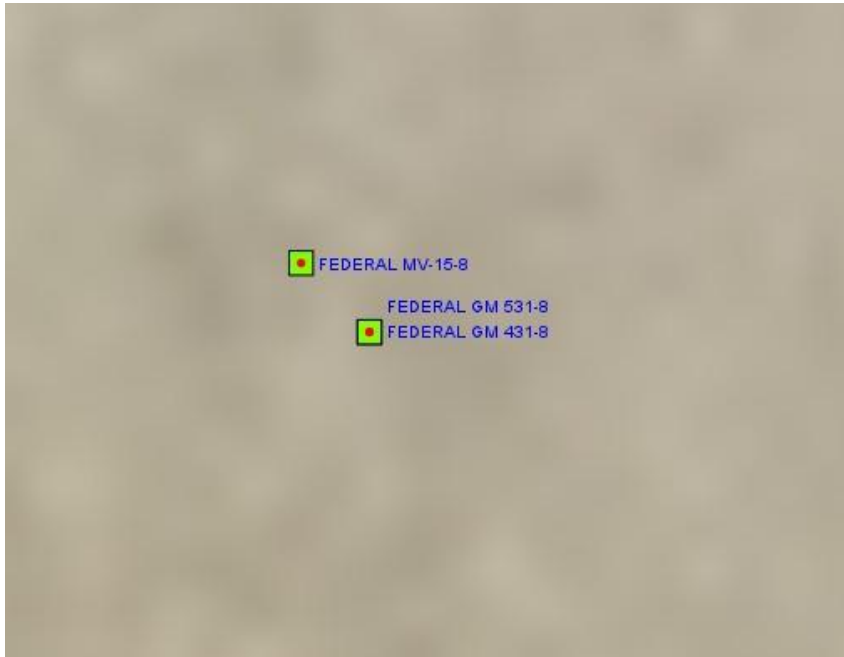


Photo # 7692 Scout Card records “as drilled” coordinates for the FEDERAL GM 431-8 & FEDERAL GM 531-8 wells (Coordinates for both wells are identical - coordinates incorrect/not in compliance with CECMC Rules 216 & 414 – records require updating)

Photo # 7693 Scout Card records “as drilled” coordinates for the FEDERAL GM 431-8 & FEDERAL GM 531-8 wells (Coordinates for both wells are identical - coordinates incorrect/not in compliance with CECMC Rules 216 & 414 – records require updating)