

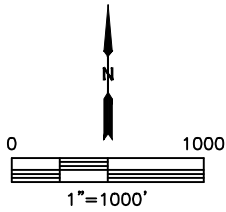
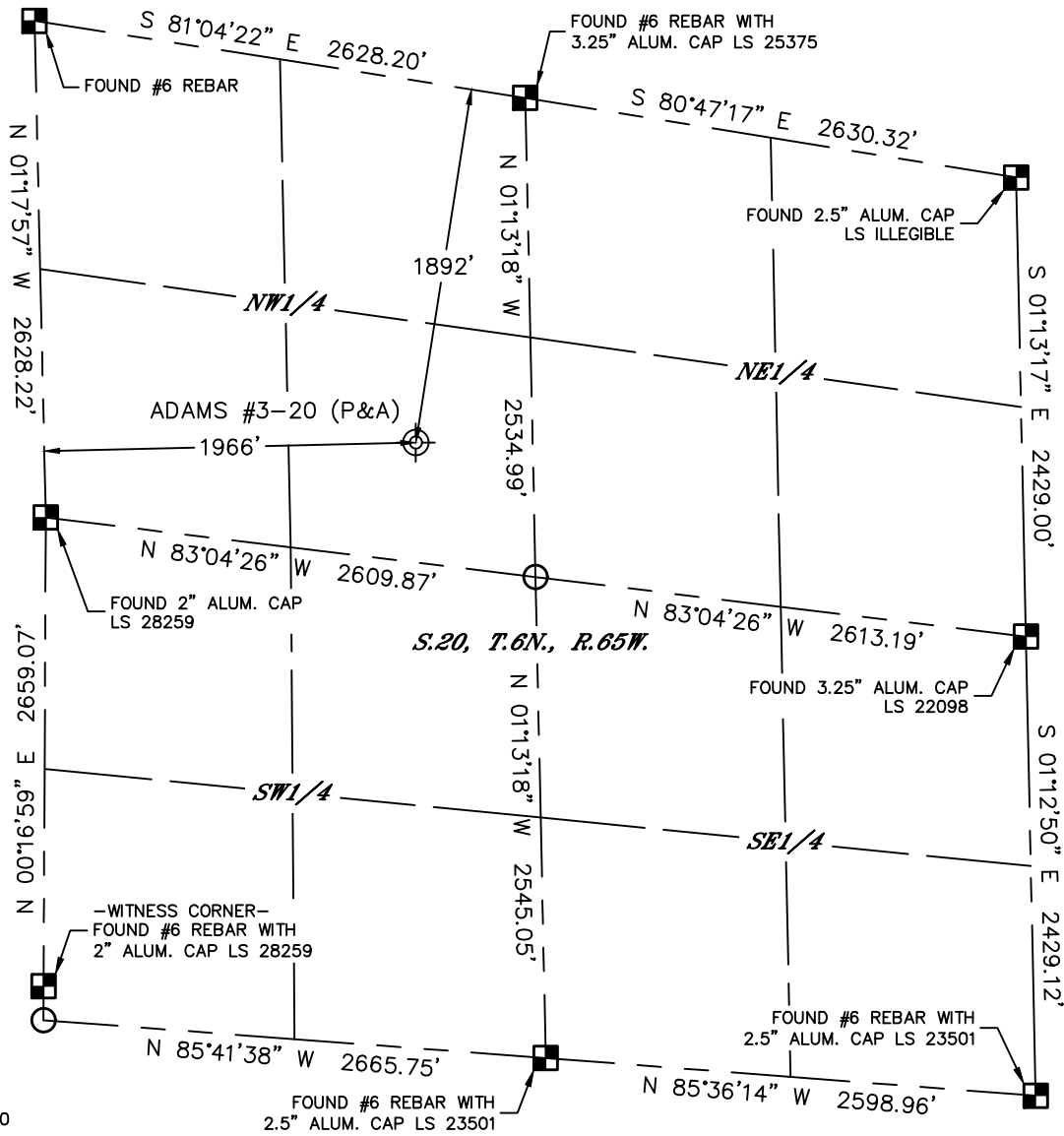


Lat40°, Inc. 6250 W. 10th Street, Unit 2, Greeley, CO 970-515-5294

# PLUGGED AND ABANDONED WELL EXHIBIT

ADAMS #3-20

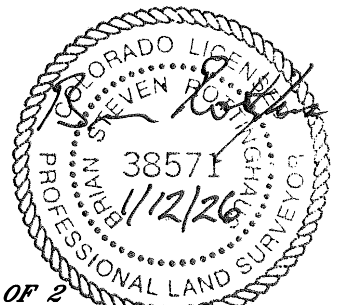
SECTION: 20  
TOWNSHIP: 6N  
RANGE: 65W  
6TH. P.M.  
WELD COUNTY, CO



|  |          |              |            |                        |                |                       |           |  |
|--|----------|--------------|------------|------------------------|----------------|-----------------------|-----------|--|
| CLIENT: CHEVRON ROCKIES BUSINESS UNIT  |          |              |            | LANDMAN: TYLER BEAVERS |                |                       |           |  |
| INSTRUMENT OPERATOR: JESSE CORRAL  |          |              |            | SURVEY DATE: 1/6/2026  |                | SURFACE USE: CROPLAND |           |  |
| SHL FOOTAGE  |          | SHL LAT °    | SHL LONG ° | SHL PDOP               | SHL ELEV (FT.) | SHL 1/4/1/4           | SHL S-T-R |  |
| 1892   | FNL 1966 | FWL 40.47481 | -104.68965 | 0.9                    | 4734           | SEW                   | 20-6-65   |  |
| DESCRIPTION: FOUND STRONG METAL DETECTOR RING AT NOTED POSITION. ALSO FOUND OTHER SMALLER RINGS RUNNING IN A NORTHERLY DIRECTION, POSSIBLE OLD FLOWLINE. |          |              |            |                        |                |                       |           |  |

NOTE:  
 1) Bearings shown are Grid Bearings of the Colorado State Plane Coordinate System, North Zone, North American Datum 1983. The lineal dimensions as contained herein are based upon the "U.S. Survey Foot."  
 2) Distances to section lines measured at 90 degrees from said section lines.  
 3) Ground elevations are based on an observed GPS elevation (NAVD 1988 DATUM).  
 4) Latitude and Longitude shown are (NAD 83 DATUM).  
 5) Sectional data as shown hereon is from previous surveys and was not verified for this P&A Exhibit.  
 6) This map does not represent a boundary survey.

- LEGEND
- = ALIQUOT MONUMENT AS DESCRIBED
  - = CALCULATED POSITION
  - = ABANDONED WELL



**SHEET 1 OF 2**  
 Brian S. Rottinghaus—On behalf of Lat40°, Inc.  
 Colorado Licensed Professional Land Surveyor No. 38571  
 DATE: 1/12/2026  
 PROJECT#: 2025427



Lat40°, Inc. 6250 W. 10th Street, Unit 2, Greeley, CO 970-515-5294

# PLUGGED AND ABANDONED WELL EXHIBIT

ADAMS #3-20

SECTION: 20  
TOWNSHIP: 6N  
RANGE: 65W  
6TH. P.M.  
WELD COUNTY, CO  
DATE: 1/6/2026



VIEW NORTH



VIEW WEST



VIEW EAST



VIEW SOUTH