



103-10388

EnCana OIL & GAS (USA) INC.

ADDENDUM TO LEGAL PLAT FOR

SDC FED. #7365

SECTION 18, T4S, R101W, 6th P.M.

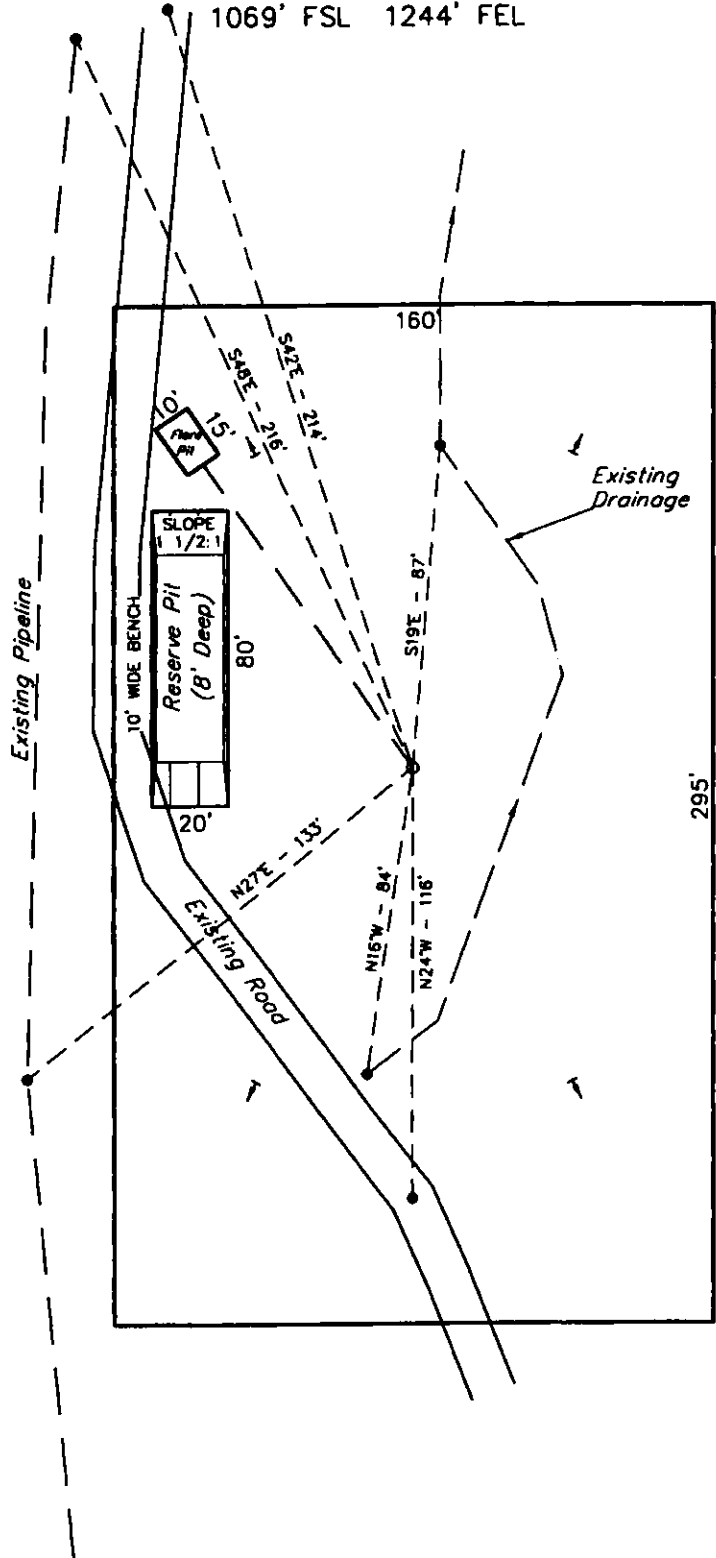
1069' FSL 1244' FEL



SCALE: 1" = 50'
DATE: 9-19-03
Drawn By: C.G.



Total Pit Capacity
w/2' of Freeboard
= 1,390 Bbls. ±
Total Pit Volume
= 400 Cu. Yds.



SURFACE USE OF LOCATION IS GRAZING.
VEGETATION CONSISTS MAINLY OF SAGEBRUSH,
JUNIPERS & NATIVE GRASSES.

UINTAH ENGINEERING & LAND SURVEYING
85 So. 200 East • Vernal, Utah 84078 • (435) 789-1017