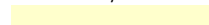

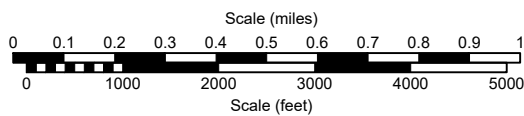
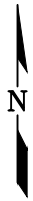
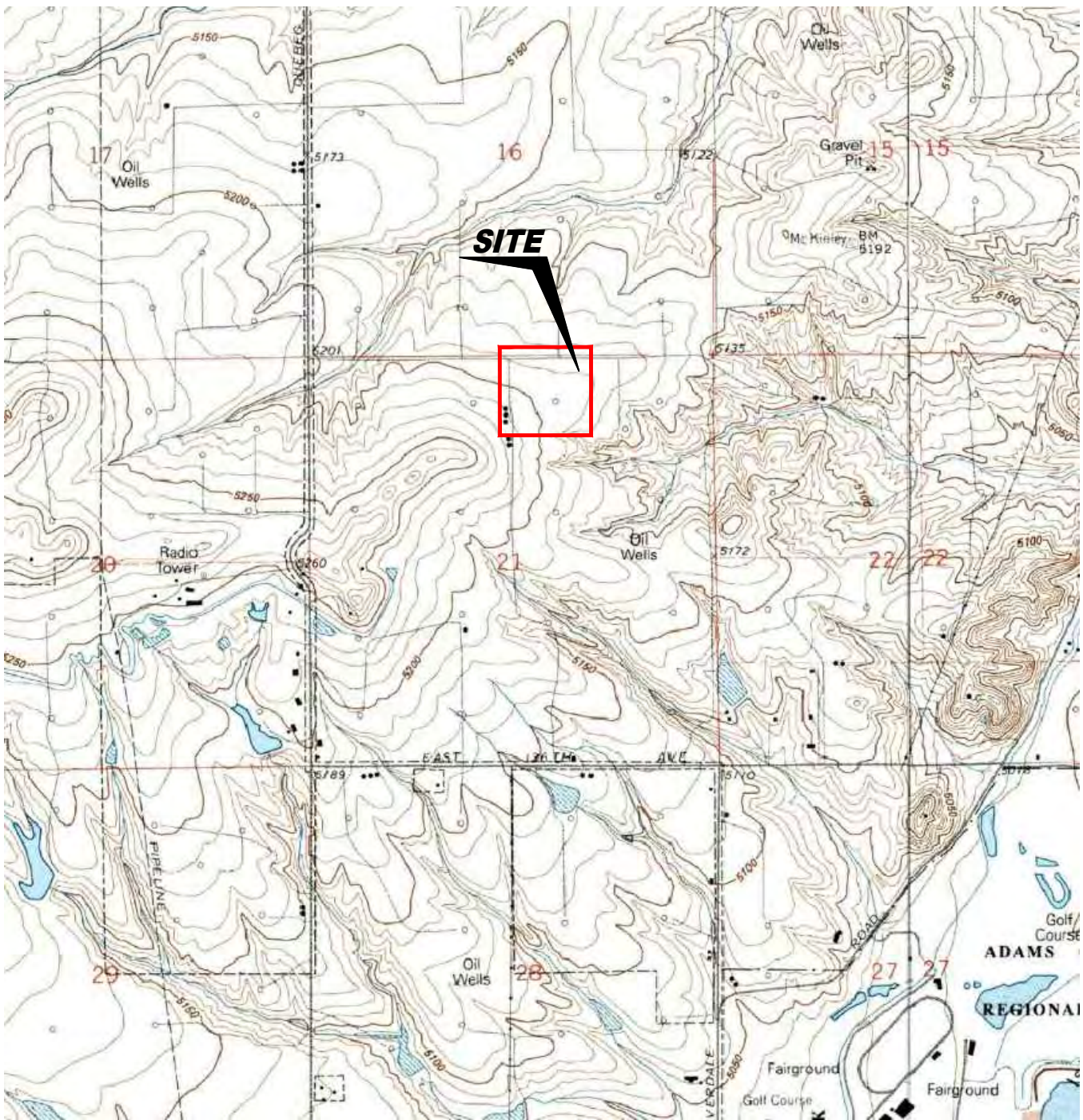


TABLE 1  
SUMMARY OF VOLATILE ORGANIC SOIL CHEMISTRY DATA  
PDC 69175  
KORTUM LD PAD, ADAMS COUNTY, COLORADO  
REM # TBD

Sample ID	Sample Date	Depth (ft)	Benzene (mg/kg)	Toluene (mg/kg)	Ethyl-Benzene (mg/kg)	Xylenes (mg/kg)	1,2,4-Trimethyl-Benzene (mg/kg)	1,3,5-Trimethyl-Benzene (mg/kg)	Naphthalene (mg/kg)	TPH (mg/kg)	TPH GRO (mg/kg)	TPH DRO (mg/kg)	TPH ORO (mg/kg)
ECMC Table 915-1 Limits (Residential SSL)			1.2	490	5.8	58	30	27	2	500	500**		
ECMC Table 915-1 Limits (Protection of Groundwater SSL)			0.0026	0.69	0.78	9.9	0.0081	0.0087	0.0038	500	500**		
Waste Char	1/26/2026	0.2	pending	pending	pending	pending	pending	pending	pending	pending	pending	pending	pending

1. Bold values exceed the ECMC Table 915-1 limit(s)  
2. Red & blue highlighted soil analytical values indicate an exceedance of the referenced soil screening level (SSL)  
3. \* Indicates laboratory minimum detection limit in excess of SSL  
4. \*\* Summation of GRO+DRO+ORO must be less than 500 mg/kg  
NA - Not analyzed  
 = Source material characterization sample, excavated and transported off site for disposal.  
 = Material excavated and transported off site for disposal.



USGS 7.5 MINUTE SERIES (TOPOGRAPHIC)

Figure 1  
**SITE LOCATION MAP**

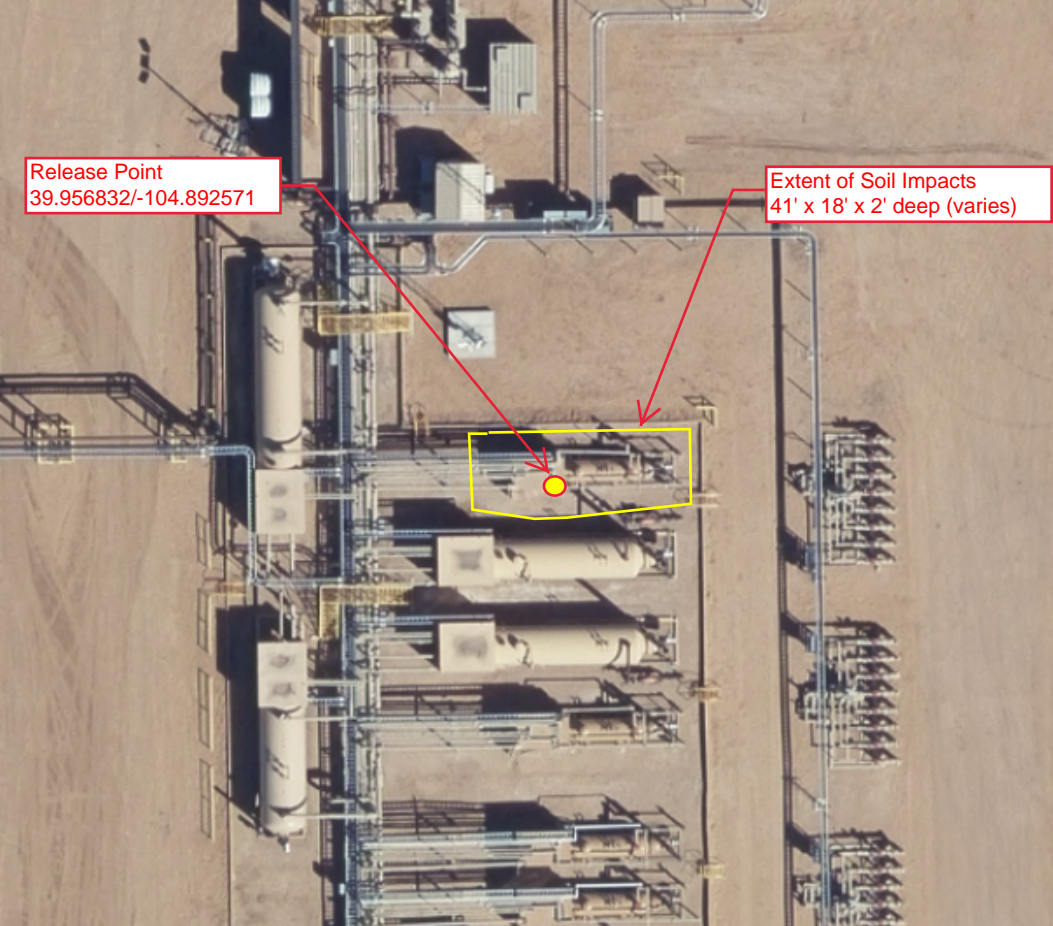
**PDC Energy, Inc. ~ Kortum LD 33 Pad**  
 NWNE Sec. 21, T1S, R67W, 6th PM  
 Adams County, Colorado  
 39.956832°, -104.892571°

Project # <b>CO24-110</b>	API #	Initial Spill/Release Report Doc#
Date <b>1/15/25</b>	Filename <b>24110T</b>	



Release Point  
39.956832/-104.892571

Extent of Soil Impacts  
41' x 18' x 2' deep (varies)



# Photo Log



*Description:*

# Photo Log



*Description:*

--

# Photo Log



*Description:*

--

# Photo Log



*Description:*

--

# Photo Log



*Description:*

# Photo Log



*Description:*

--

# Photo Log



*Description:*

--

# Photo Log



*Description:*

# Photo Log



*Description:*

--

# Photo Log



***Description:***