

# Inspection Photos

01/22/2026

**Operator:** TEP Rocky Mountain LLC #96850

**Location ID:** 336017

**Inspection Doc:** 719200702

Garfield County, CO

Emily Gaasche  
NW Reclamation Specialist  
ECMC



**COLORADO**

**Energy & Carbon Management  
Commission**

Department of Natural Resources

## Inspection Photos

Operator Name: TEP Rocky Mountain LLC #96850

Location ID: 336017



**Photo 1:** Photos showing an overview of the location looking north and south, respectively.



**COLORADO**

**Energy & Carbon Management  
Commission**

Department of Natural Resources

## Inspection Photos

Operator Name: TEP Rocky Mountain LLC #96850

Location ID: 336017



**Photo 2:** Photos showing an overview of the location looking east and west, respectively.



**COLORADO**

**Energy & Carbon Management  
Commission**

Department of Natural Resources

## Inspection Photos

Operator Name: TEP Rocky Mountain LLC #96850

Location ID: 336017



**Photo 3:** Photos showing an overview of the southern and western interim areas, respectively. See inspection #719200568 for additional reclamation details.



**COLORADO**

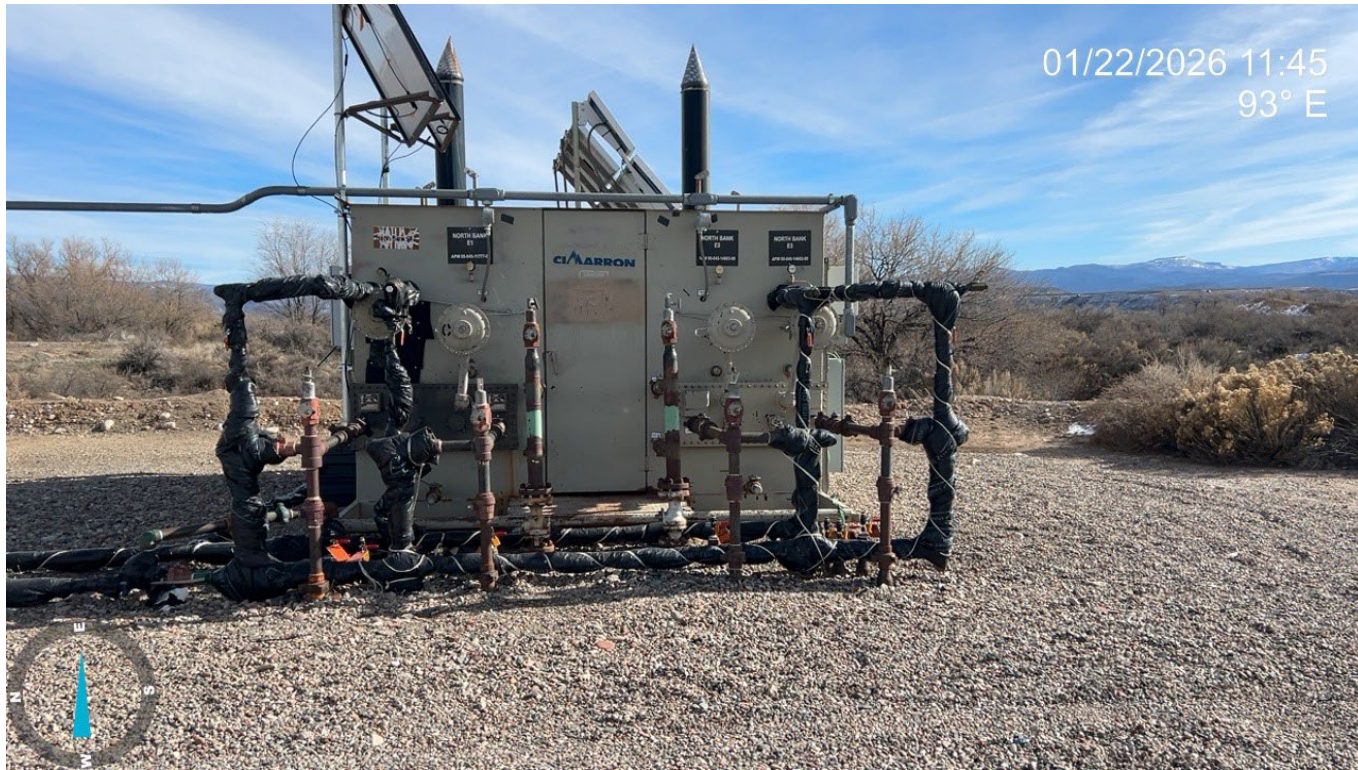
**Energy & Carbon Management  
Commission**

Department of Natural Resources

## Inspection Photos

Operator Name: TEP Rocky Mountain LLC #96850

Location ID: 336017



**Photo 4:** Photo showing unclear Operator contact information has been removed from separator equipment. The Corrective Action from inspection #719200568 has been resolved.



**COLORADO**

**Energy & Carbon Management  
Commission**

Department of Natural Resources

## Inspection Photos

Operator Name: TEP Rocky Mountain LLC #96850

Location ID: 336017



**Photo 5:** Photo showing damaged perimeter fencing has been removed from the location. The Corrective Action from inspection #719200568 has been resolved.



**COLORADO**

**Energy & Carbon Management  
Commission**

Department of Natural Resources