



**SECTOR CEMENT BOND
GAMMA RAY
CCL LOG**

Comp. POCO OPERATING
Well KALLSEN 1
Field WATTENBERG
Co. ADAMS
State COLORADO

Company **POCO OPERATING**
Well **KALLSEN 1**
Field **WATTENBERG**
County **ADAMS** State **COLORADO**

Location: API #: 05-001-08057
1120' FNL & 1320' FEL
SEC 1S TWP 6SW RGE 6
Permanent Datum GL Elevation 5072'
Log Measured From GL 0' Above Perm. Datum
Drilling Measured From KB
Other Services
NONE
Elevation
K.B. N/A
D.F. N/A
G.L. 5072'

Date of Service	06-JAN-2026
Run Number	ONE
Depth Driller or PBTD	7898'
Depth Logger	7000'
Bottom Log Interval	2500'
Top Log Interval	SURFACE
Open Hole Size	8.625"
Type Fluid	H2O
Fluid Level	50'
Fluid Density	N/A
Max. Recorded Temperature	N/A
Max. Wellhead Pressure	ZERO-PSI
Wellhead Connection	2 7/8" PUP
Estimated Cement Top	SEE LOG
Unit Number	495094
Wireline Size	9/32"
Location	FT. MORGAN
Recorded By	J. SMITH
Witnessed By	BRENT DULLECK
Surface Casing	Size 8.625" W/Ft 2.4# Top SURFACE Bottom 212'
Production Casing	Size 5 1/2" W/Ft 17# Top SURFACE Bottom 7931'
Liner Casing	
Tubing Record	

<<< Fold Here >>>

All interpretations are opinions based on inferences from electrical or other measurements and Ranger Energy Services cannot and does not guarantee the accuracy or correctness of any interpretation, and Ranger Energy Services will not be liable or responsible for any loss, costs, damages, or expenses incurred or sustained by anyone resulting from any interpretation made by any of our officers, agents or employees.

Comments

N/A DENOTES NOT AVAILABLE OR NON-APPLICABLE.
LOG CORRELATED TO GL

THANK YOU FOR USING RANGER ENERGY SERVICES! FIELD TICKET #

Your Ranger Energy Services Crew	Tool Data - Services	Serial Number
Engineer: SMITH Operator: KOTT Operator: HARPER Operator:		

Operator	Offset (ft)	Schematic	Description	Length (ft)	O.D. (in)	Weight (lb)
----------	-------------	-----------	-------------	-------------	-----------	-------------

Sensor	Offset (ft)	Schematic	Description	Length (ft)	O.D. (in)	Weight (lb)
			Cable_Head-1_7/16 Titan 1 7/16" Cable Head	1.02	1.44	3.31
IntTemp	12.34					
WVFS8	9.09		RBT-Probe (070150) Probe Radii Bond Tool with Digital Telemetry	8.75	2.75	90.00
WVFS7	9.09					
WVFS6	9.09					
WVFS5	9.09					
WVFS4	9.09					
WVFS3	9.09					
WVFS2	9.09					
WVFS1	9.09					
WVFCAL	9.09					
WVF3FT	9.09					
WVF5FT	8.09					
ErrCt	4.84					
CCL	3.89					
GR	2.65		GR_analog-GR275B (071129) 275 Gamma-CCL (Pulse) Top Detector	4.57	2.75	55.00
			Bull_Plug-1_7/16_GO Titan 1 7/16" Female Bull Plug	0.27	1.44	1.00

Dataset: poco_kallsen 1_05-001-08057_20260106_scbl-gr-ccl.db: field/well/run_2/pass_5
 Total length: 14.60 ft
 Total weight: 149.31 lb
 O.D.: 2.75 in

Log Variables

DatabaseC:\ProgramData\Warrior\Data\poco_kallsen 1_05-001-08057_20260106_scbl-gr-ccl.db
 Dataset field/well/run_2/pass_5/_vars_

Top - Bottom

BOREID in 8.75	BOTTEMP degF 100	CASEOD in 5.5	CASETHCK in 0.361	CASEWGHT lb/ft 17	MAXAMPL mV 71.9	MINAMPL mV 2.2	MINATTN db/ft 0.8
PERFS No	PPT usec 263	SRFTEMP degF 40	TDEPTH ft 2500				

Variable Description

BOREID : Borehole I.D.
 BOTTEMP : Bottom Hole Temperature
 CASEOD : Casing O.D.
 CASETHCK : Casing Thickness

CASEWGHT : Casing Weight
 MAXAMPL : Maximum Amplitude
 MINAMPL : Minimum Amplitude
 MINATTN : Minimum Attenuation

PERFS : Perforation Flag
 PPT : Predicted Pipe Time
 SRFTEMP : Surface Temperature
 TDEPTH : Total Depth

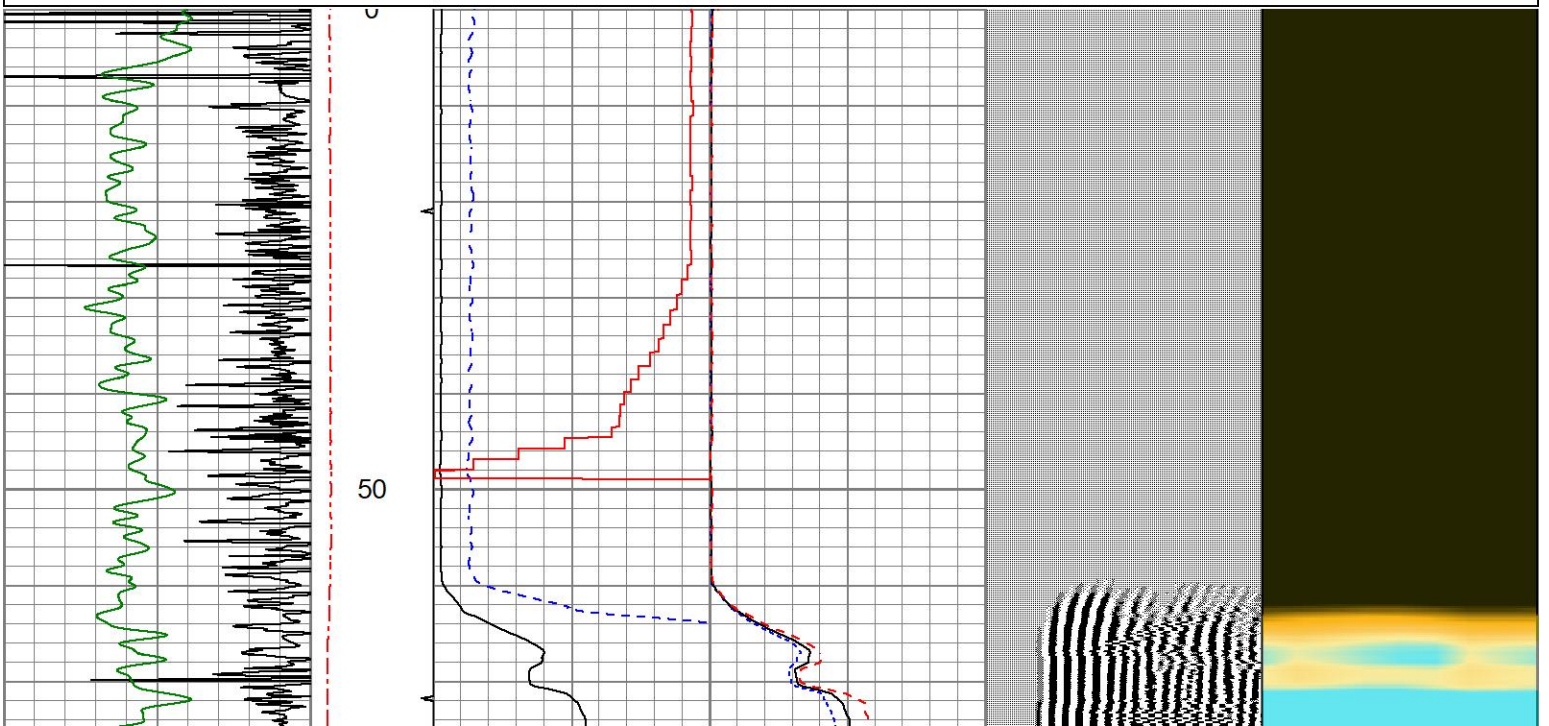


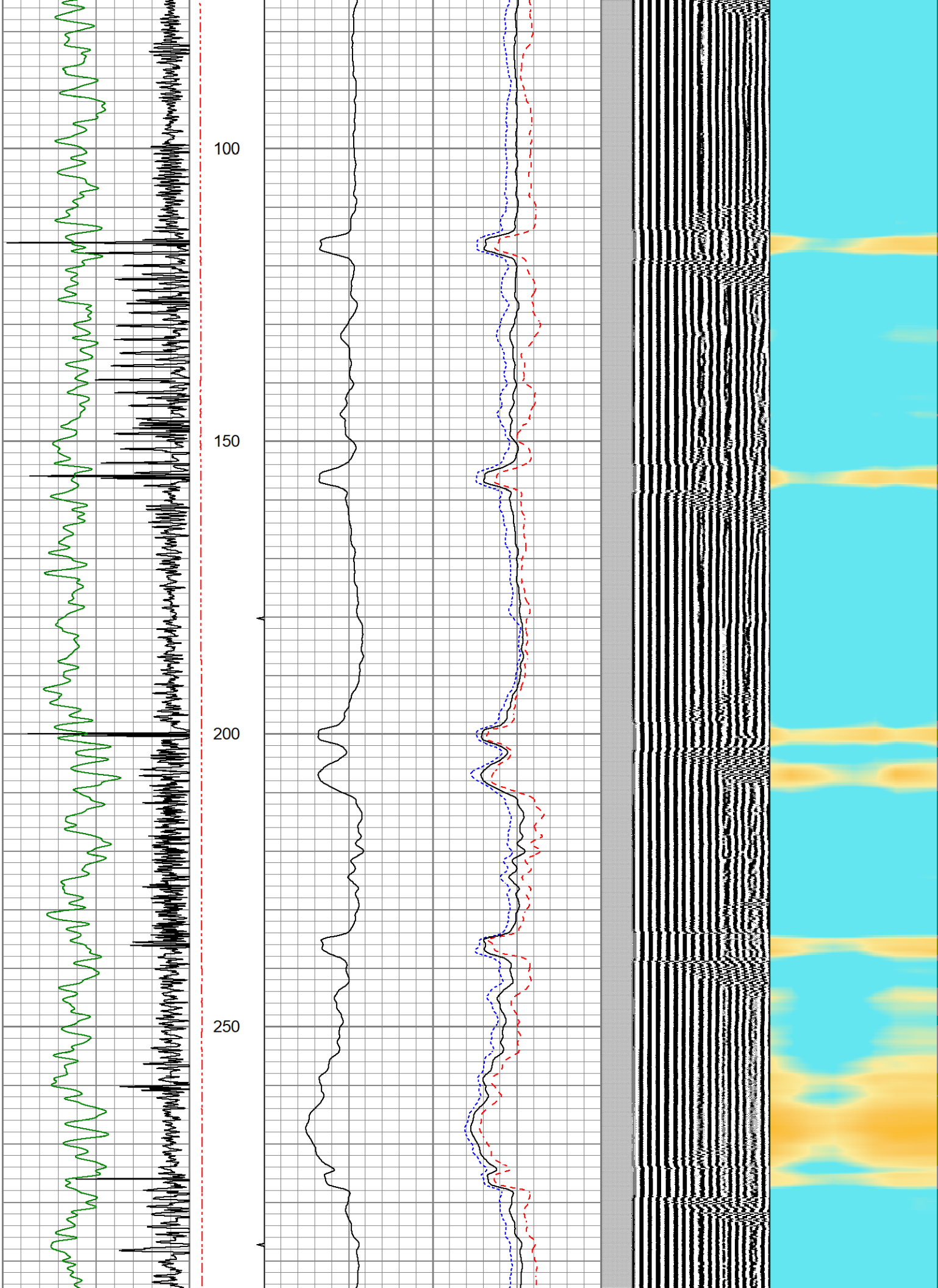
MAIN PASS

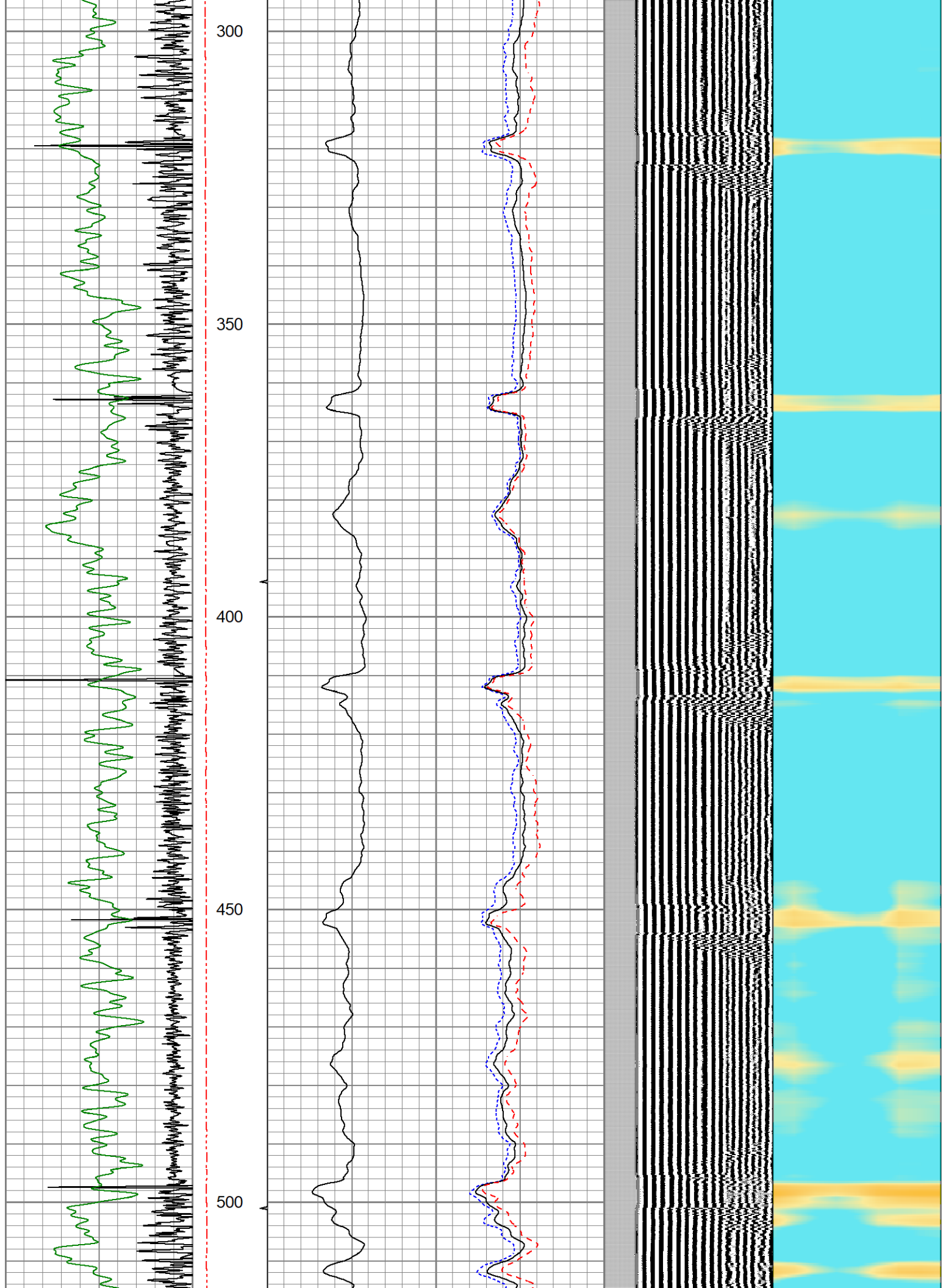
0 PSI APPLIED AT SURFACE

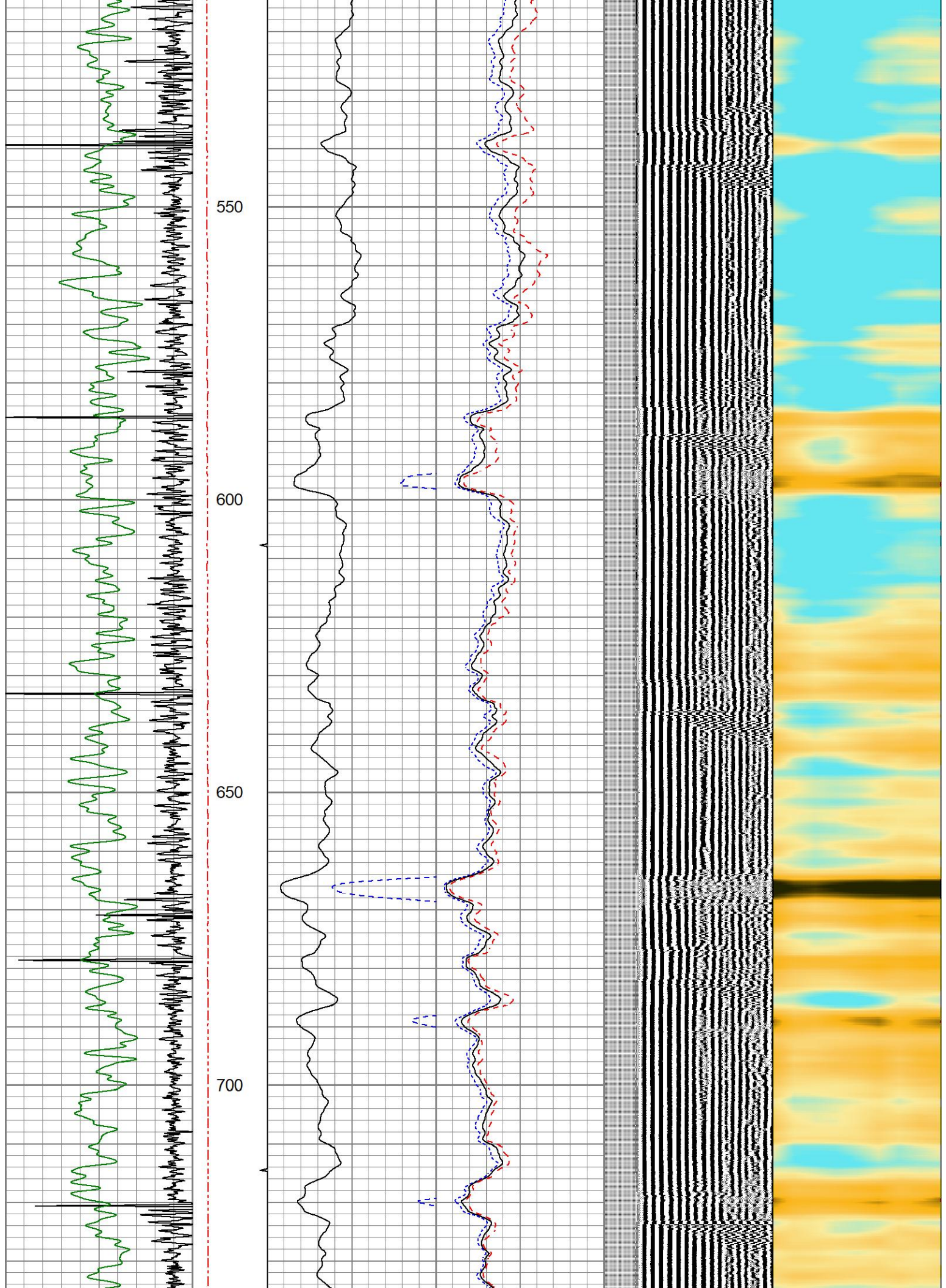
Database File poco_kallsen 1_05-001-08057_20260106_scbl-gr-ccl.db
 Dataset Pathname run_2/pass_5
 Presentation Format res_scbl_co_verdad
 Dataset Creation Tue Jan 06 10:50:27 2026
 Charted by Depth in Feet scaled 1:240

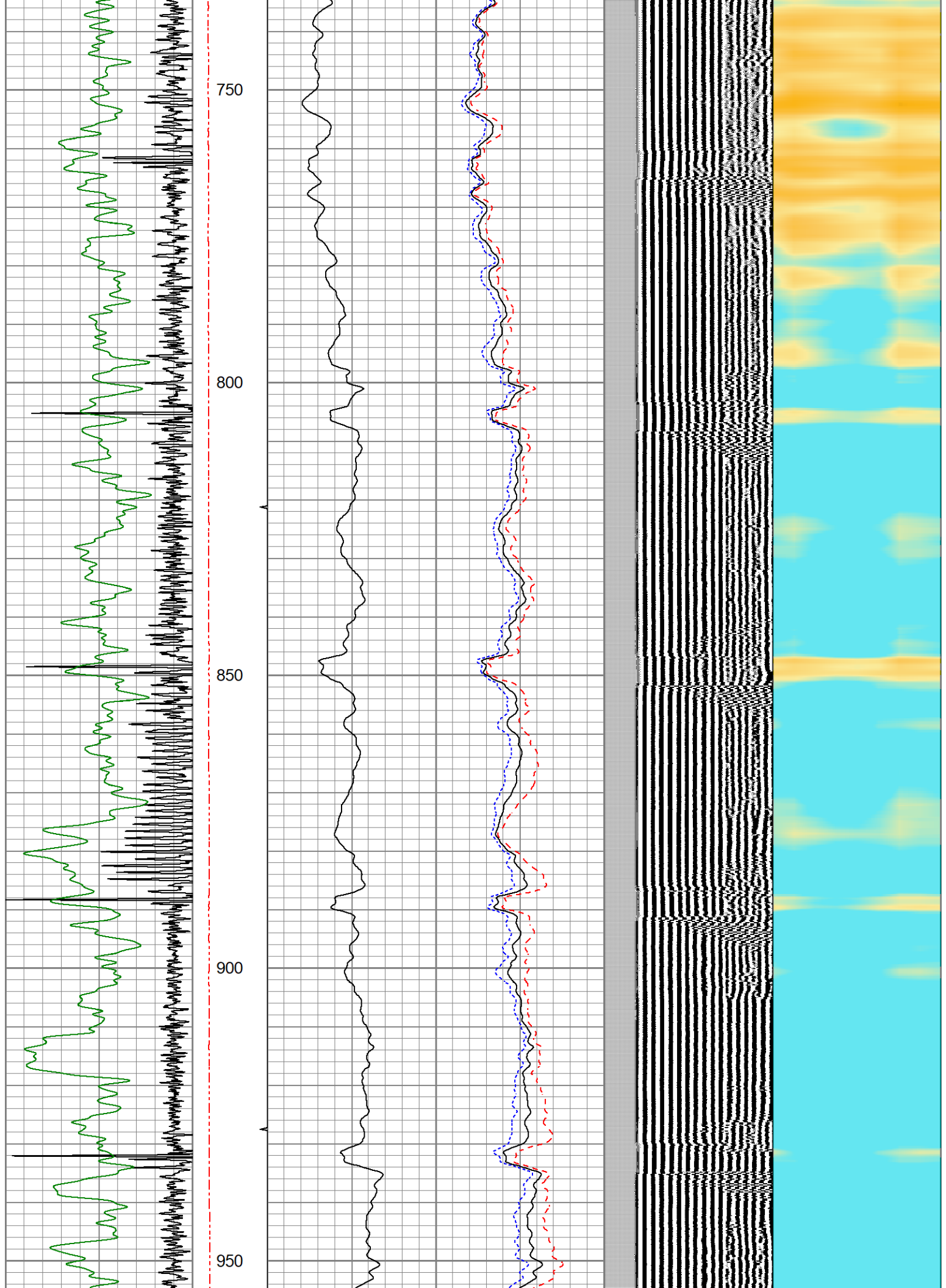
250 3FT TT (usec) 150	LTEN	3' Amplitude	0 Sector Min Amp 150	200 VDL (usec) 1200	1 Sector Map 8
-9 Collar Locator 1	(lb)	(mV) 100	Sector Avg Amp		
Gamma Ray	0 2000	3' Amplified	0 150		
0 (GAPI) 150	MINMK	Amplitude X 5	Sector Max Amp		
	10 0 0	(mV) 20	0 150		
		0 LSPD (ft/min)-100			

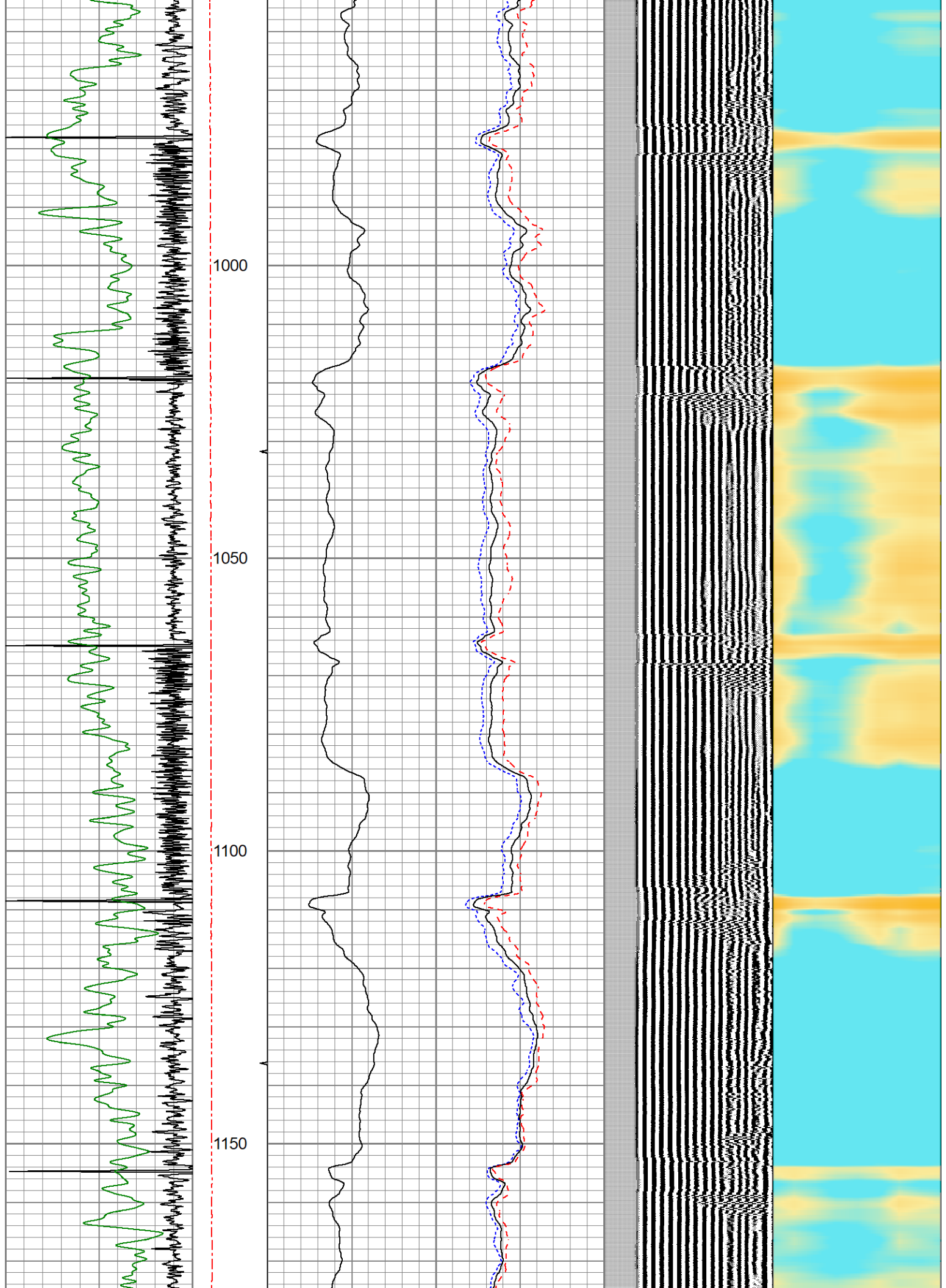


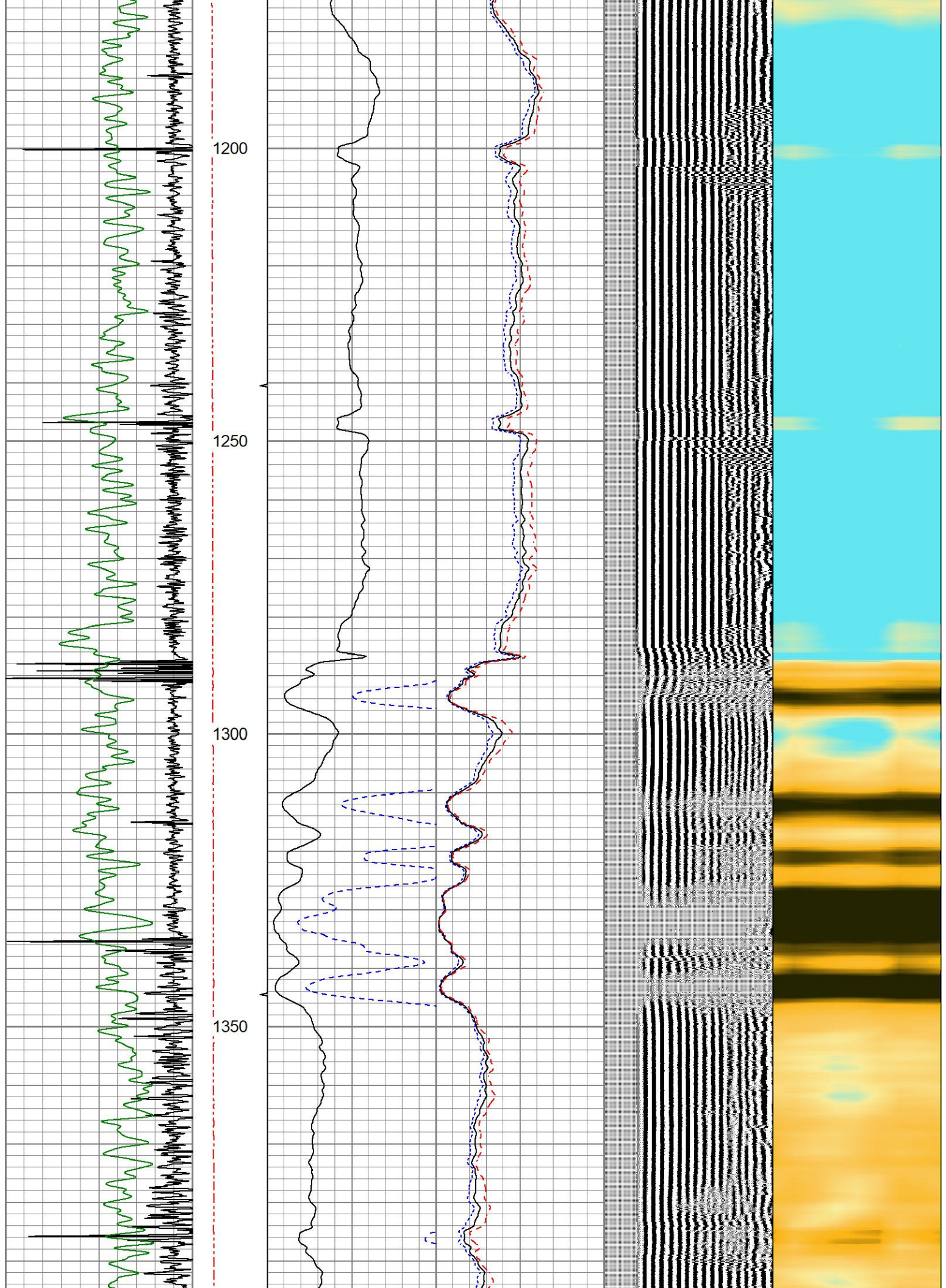


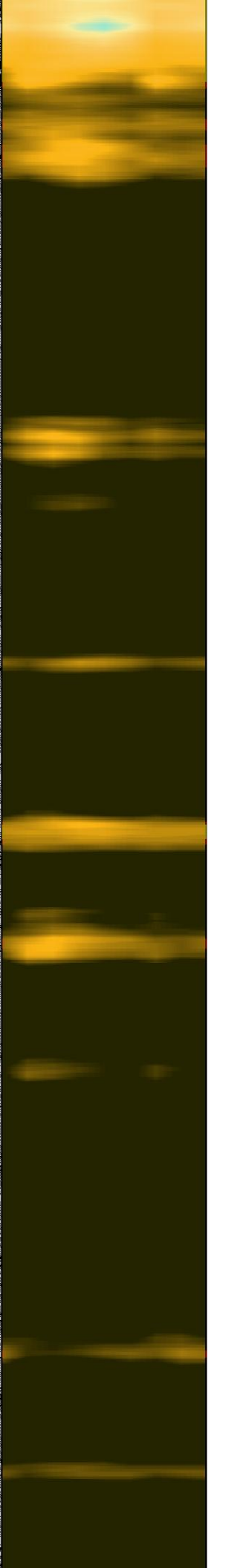
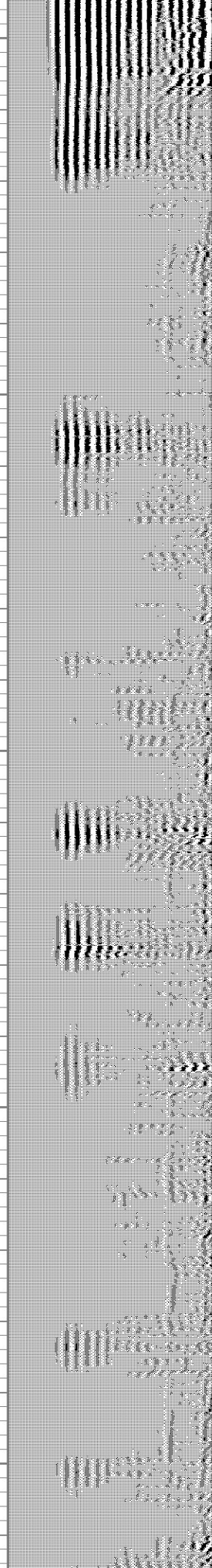
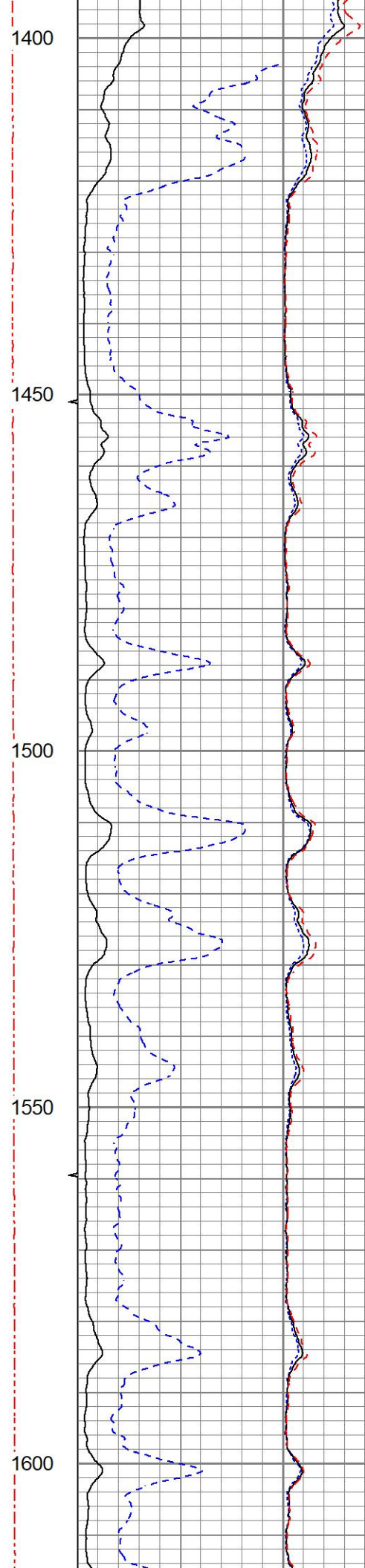
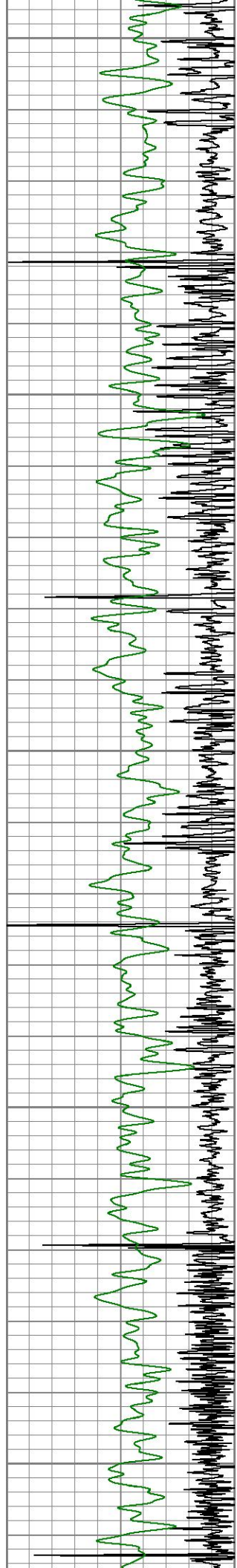


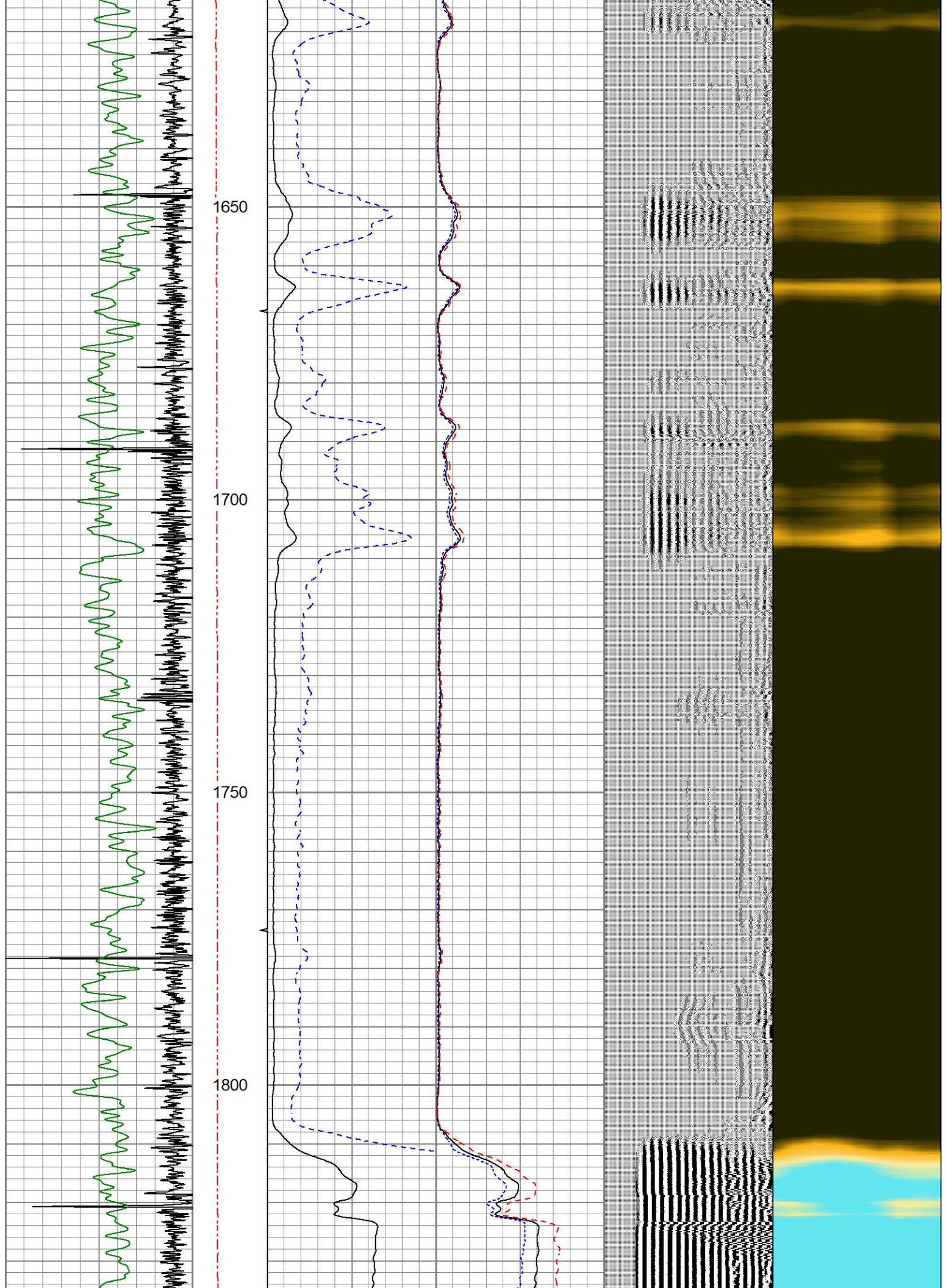


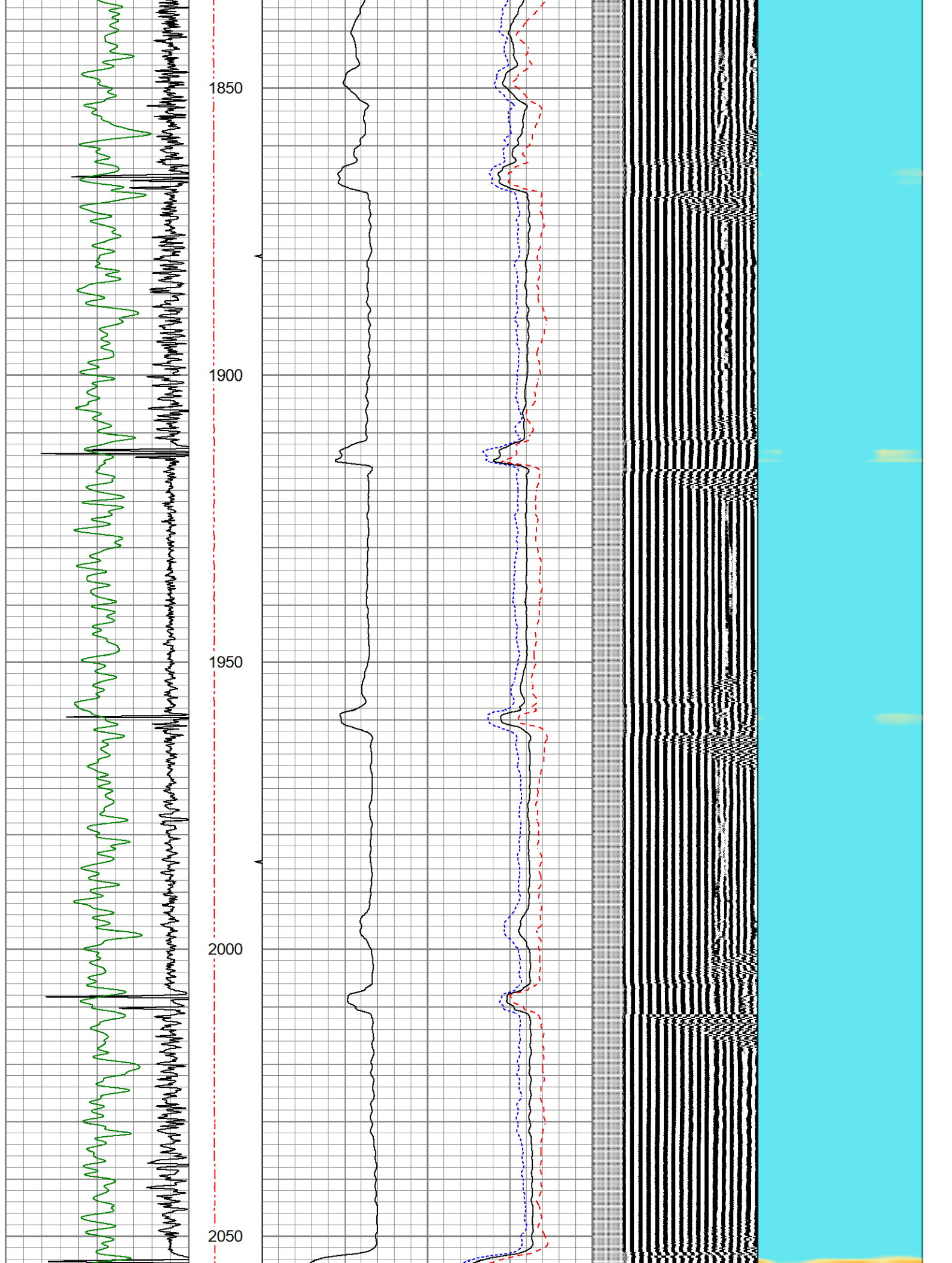


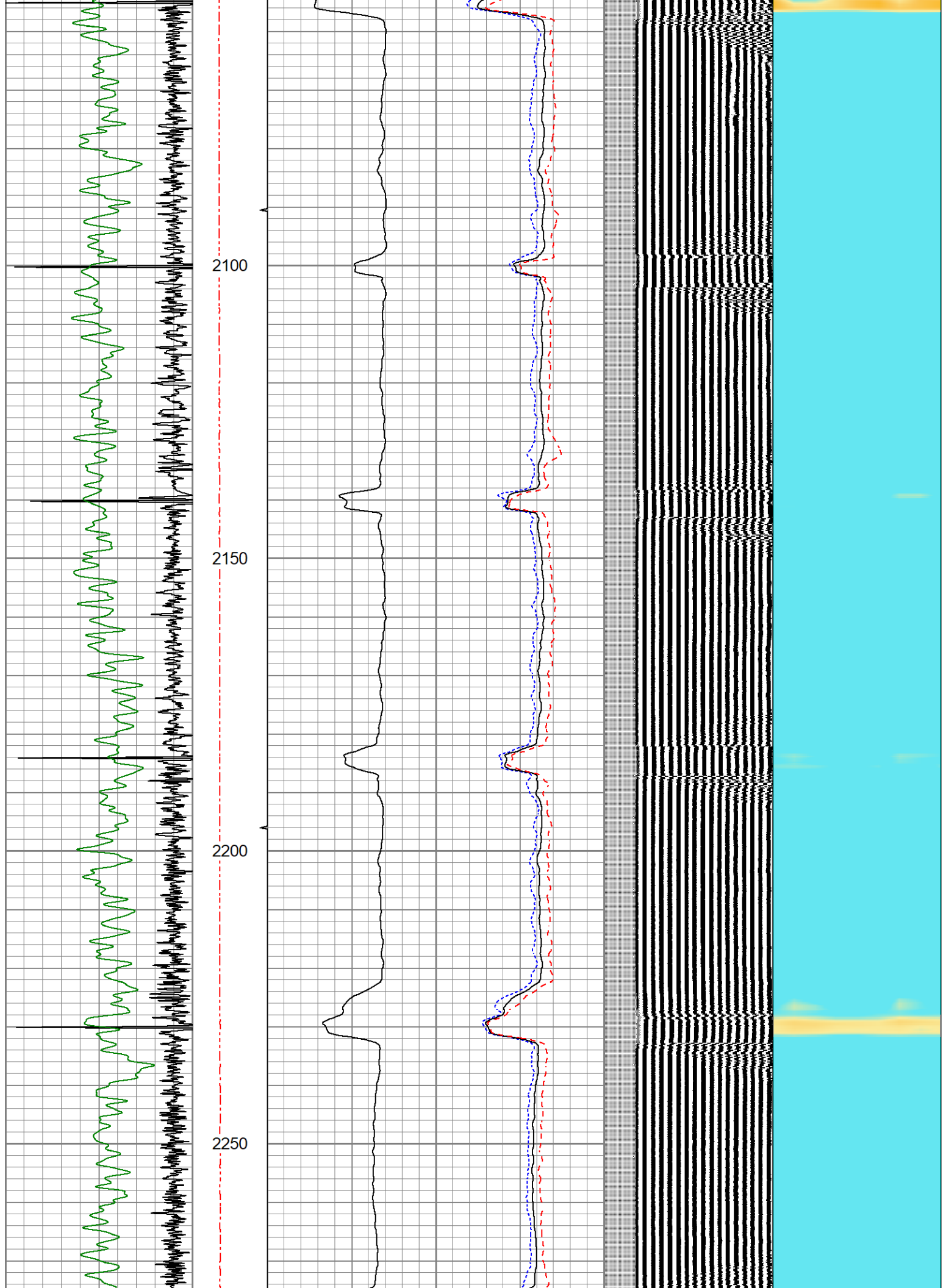


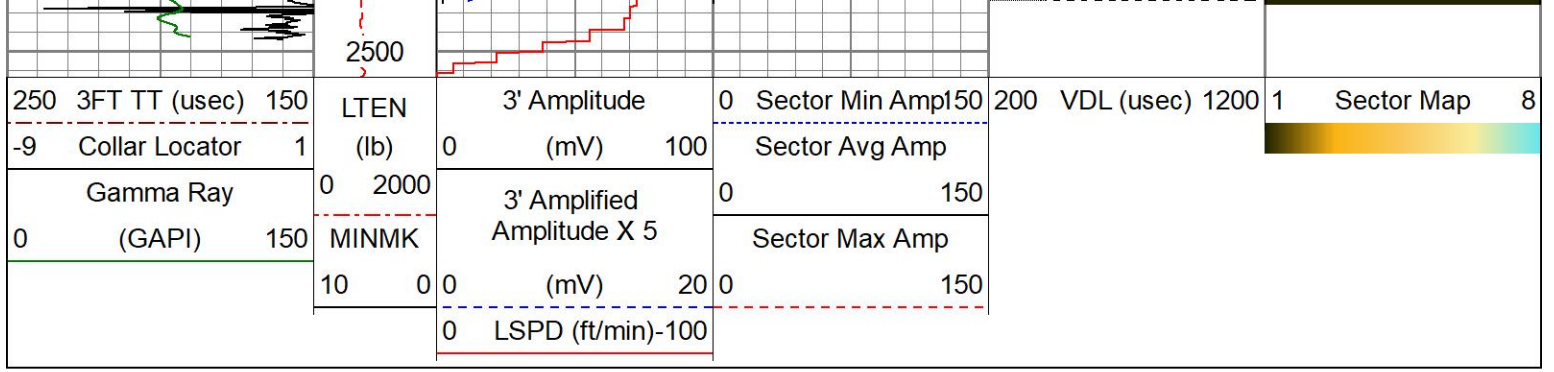








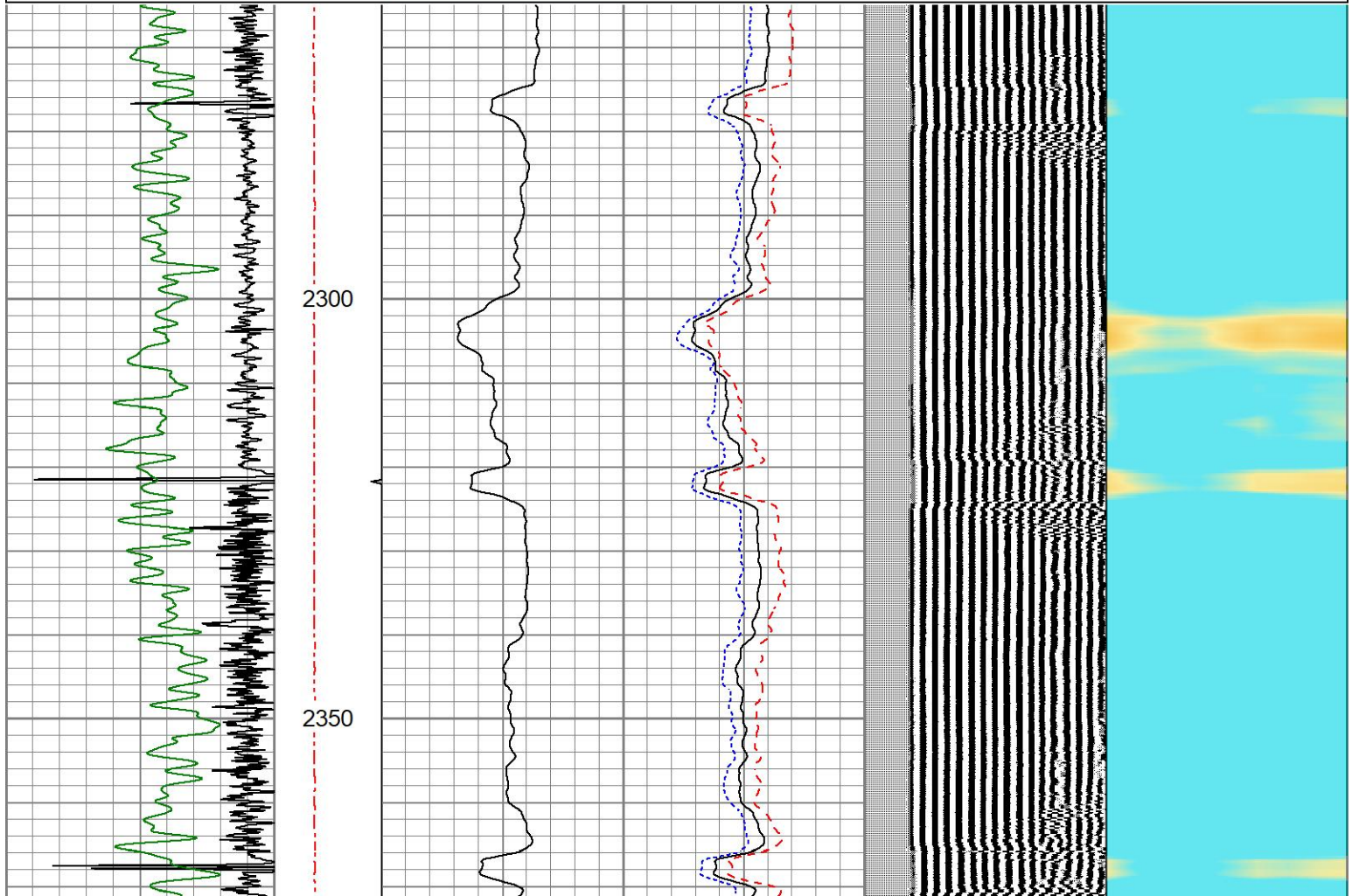
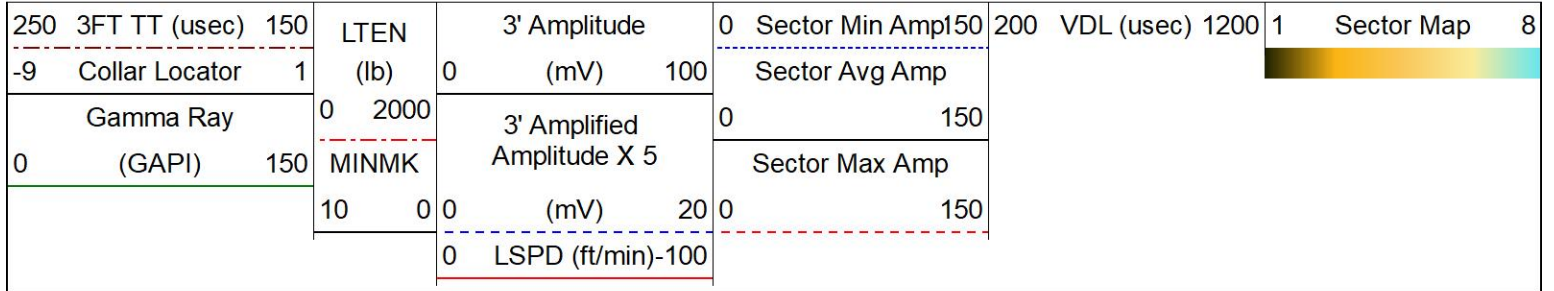


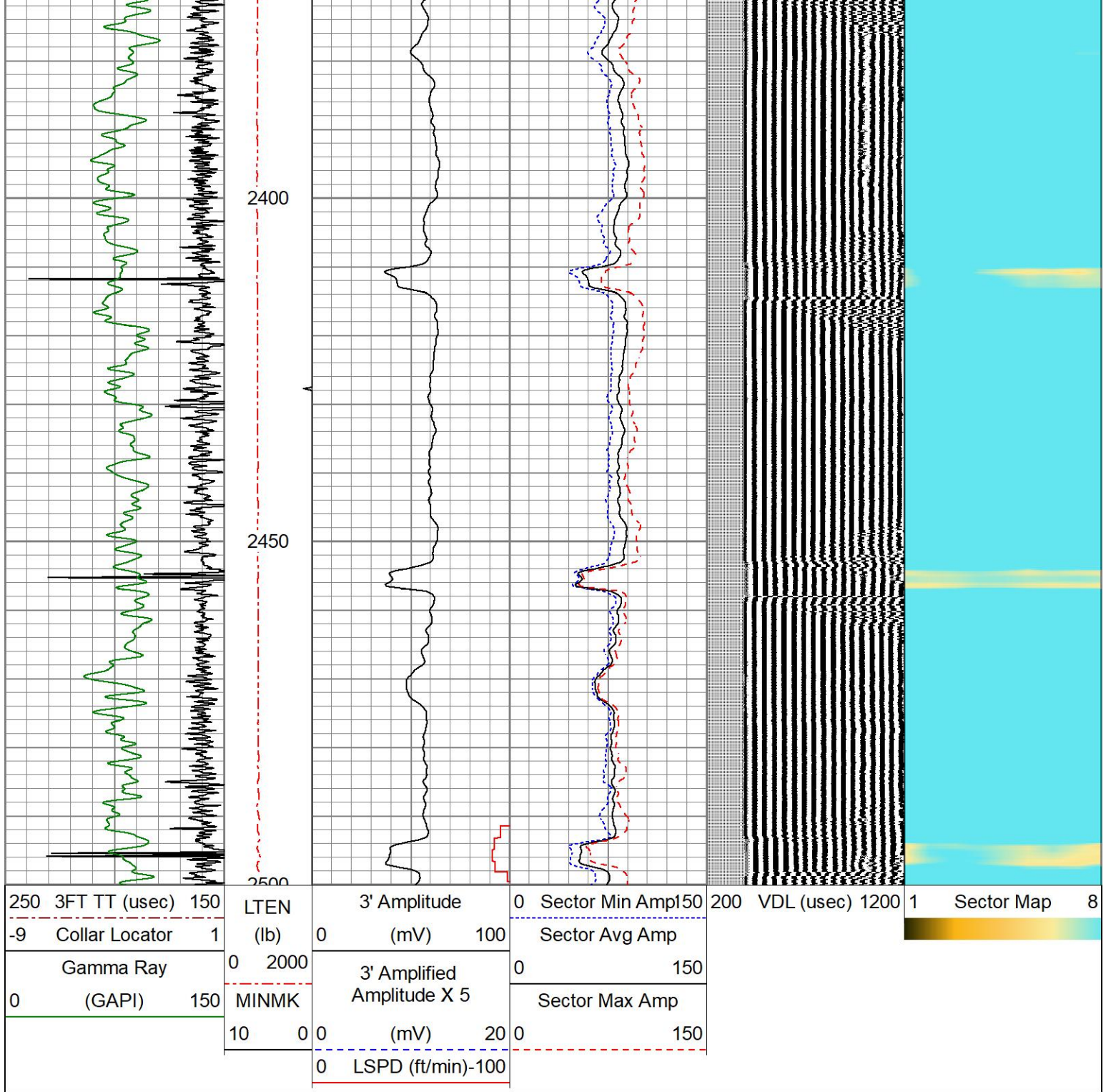


REPEAT PASS

0 PSI APPLIED AT SURFACE

Database File poco_kallsen 1_05-001-08057_20260106_scbl-gr-ccl.db
 Dataset Pathname run_2/pass_4
 Presentation Format res_scbl_co_verdad
 Dataset Creation Tue Jan 06 10:25:28 2026
 Charted by Depth in Feet scaled 1:240





Calibration Report

Database File poco_kallsen 1_05-001-08057_20260106_scbl-gr-ccl.db
 Dataset Pathname run_2/pass_5
 Dataset Creation Tue Jan 06 10:50:27 2026

Gamma Ray Calibration Report

Serial Number: 071129
 Tool Model: GR275B
 Performed: Mon Jun 27 09:11:45 2022

Calibrator Value: 250.0 GAPI

Background Reading: 34.9 cps
 Calibrator Reading: 302.3 cps

Sensitivity: 0.8500 GAPI/cps

Segmented Cement Bond Log Calibration Report

Serial Number: 070150
 Tool Model: Probe
 Calibration Casing Diameter: 5.500 in
 Calibration Depth: 31.333 ft

Master Calibration, performed Tue Jan 6 09:52:19 2026:

	Raw (v)		Calibrated (mv)		Results	
	Zero	Cal	Zero	Cal	Gain	Offset
3'	0.000	1.073	2.200	71.921	64.954	2.200
CAL	0.000	1.102				
5'	0.000	1.071	2.200	71.921	65.082	2.200
SUM						
S1	0.000	1.110	0.000	100.000	90.051	0.000
S2	0.000	1.060	0.000	100.000	94.316	0.000
S3	0.000	1.052	0.000	100.000	95.027	0.000
S4	0.000	1.038	0.000	100.000	96.312	0.000
S5	0.000	1.055	0.000	100.000	94.809	0.000
S6	0.000	1.097	0.000	100.000	91.144	0.000
S7	0.000	1.077	0.000	100.000	92.892	0.000
S8	0.000	1.097	0.000	100.000	91.168	0.000

Internal Reference Calibration, performed (Not Performed):

	Raw (v)		Calibrated (v)		Results	
	Zero	Cal	Zero	Cal	Gain	Offset
CAL	0.000	0.000	0.000	1.102	1.000	0.000

Air Zero Calibration, performed Tue Jan 6 09:51:27 2026:

	Raw (v)	Calibrated (v)	Results
	Zero	Zero	Offset
3'	0.000	0.000	0.000
5'	0.000	0.000	0.000
SUM			
S1	0.000	0.000	0.000
S2	0.000	0.000	0.000
S3	0.000	0.000	0.000
S4	0.000	0.000	0.000
S5	0.000	0.000	0.000
S6	0.000	0.000	0.000
S7	0.000	0.000	0.000
S8	0.000	0.000	0.000



Company **POCO OPERATING**
 Well **KALLSEN 1**
 Field **WATTENBERG**
 County **ADAMS**
 State **COLORADO**