

FREMONT ENVIRONMENTAL INC.

December 31, 2025

Mr. Daniel Peterson
Noble Energy Inc.
2115 117th Ave.
Greeley, CO 80634

Subject: **Excavation Report**
70 Ranch USX BB 09-99HZ
API # 05-123-30639
NWNW Sec. 9, T5N, R63W
Weld County, Colorado
Fremont Project No. C024-232
Remediation # 36492

Dear Mr. Peterson:

Enclosed please find a copy of the above-referenced Excavation Report for 70 Ranch USX BB 09-99HZ former flowline location in Weld County, Colorado. The enclosed report describes excavation and sampling efforts to remediate impacted soil at the site.

Please contact me at (603) 477-6907 if you require any additional information.

Fremont appreciates the opportunity to provide this service.

Sincerely,
FREMONT ENVIRONMENTAL INC.



Ethan D. Black, PG
Consultant

Enclosure

EXCAVATION REPORT

NOBLE ENERGY INC.

70 RANCH USX BB 09-99HZ

WELD COUNTY, COLORADO

FREMONT PROJECT NO. C024-232

API # 05-123-30639, REMEDIATION # 36492

Prepared by:

Fremont Environmental Inc.

1759 Redwing Lane

Broomfield, CO 80020

(303) 956-8714

December 31, 2025

TABLE OF CONTENTS

1.0 INTRODUCTION	1
2.0 BACKGROUND INFORMATION	1
2.1 Site Location	1
2.2 Site History	1
3.0 FIELD ACTIVITIES	2
3.1 Soil Excavation and Sampling.....	2
4.0 DISCUSSION	4
5.0 REMARKS.....	4

Tables

Table 1:	Field Data Summary
Table 2:	Summary of Volatile Organic Soil Chemistry Data
Table 3:	Summary of Polycyclic Aromatic Hydrocarbon Soil Chemistry Data
Table 4:	Summary of Inorganic Soil Chemistry Data
Table 5:	Summary of Metals Soil Chemistry Data

Figures

Figure 1:	Site Location Map
Figure 2:	Site Map
Figure 3:	Organic Soil Chemistry Map
Figure 4:	Metals And Inorganic Soil Chemistry Map
Figure 5:	Background Sample Soil Chemistry Map

Appendix

Appendix A:	Photo Log
-------------	-----------

EXCAVATION REPORT

NOBLE ENERGY INC.

70 RANCH USX BB 09-99HZ

WELD COUNTY, COLORADO

FREMONT PROJECT NO. C024-232

API # 05-123-30639, REMEDIATION # 36492

1.0 INTRODUCTION

The purpose of this document is to present information collected during the multi-day excavation of soils at the 70 Ranch USX BB 09-99HZ former flowline (70 Ranch) location in Weld County, Colorado. This excavation project was completed on April 8, 2025.

2.0 BACKGROUND INFORMATION

2.1 Site Location

The 70 Ranch flowline is located approximately 6.5 miles northeast of Kersey, Colorado in Weld County as shown on Figure 1. The site is located in a rural and agricultural area approximately 2.4 miles southeast of the intersection of County Road 61 and County Road 62. The location is further described as the NW $\frac{1}{4}$ of the NW $\frac{1}{4}$ of Section 9, Township 5N, Range 63W.

2.2 Site History

The site consists of the former 70 Ranch USX BB 09-99HZ oil well. The 70 Ranch USX BB 09-99HZ well was drilled in 2010 to a true vertical depth of approximately 6,551 feet.

A historical release was reported by Fremont Environmental, Inc. on October 15, 2024, following receipt of laboratory analytical data that indicated the FL04-3.0 ft flowline directional change sample, collected on October 9, 2024, during the 70 Ranch USX BB09-99HZ flowline decommissioning, exceeded ECMC Table 915-1 standards for benzo(a)anthracene at 0.0229 mg/kg.

Another historical release was reported by Entrada Consulting Group on October 16, 2024, following receipt of laboratory analytical data that indicated the FLR01 wellhead flowline riser sample, collected on September 16, 2024, during the 70 Ranch USX BB09-99HZ wellhead decommissioning, exceeded ECMC Table 915-1 standards for 1-methylnaphthalene at 0.012 mg/kg.

Excavation was undertaken to address the impacts observed following wellhead and flowline decommissioning activities at the 70 Ranch USX BB09-99HZ. Groundwater was not encountered during the excavation.

3.0 FIELD ACTIVITIES

3.1 Soil Excavation and Sampling

Soil remediation efforts consisted of the excavation and disposal of petroleum-impacted soil at two locations (FLR01 and FL04-3.0 ft) along the former 70 Ranch flowline. Generally, the subsurface consists of well-sorted sand extending approximately five feet below ground surface (bgs). Groundwater was not encountered in either excavation. The excavation extents are illustrated on Figure 2.

The two-day excavation was completed along the 70 Ranch on April 8, 2025. The excavation extents measure approximately 15'x15'x5' deep. Soil samples were collected as grab samples from the excavation sidewalls at four feet and from the excavation floors at five feet bgs.

The soil samples were analyzed by Pace Analytical Services, LLC in Mount Juliet, Tennessee for benzene, toluene, ethylbenzene and total xylenes (BTEX), naphthalene, 1,2,4-trimethylbenzene and 1,3,5-trimethylbenzene (TMB), total petroleum hydrocarbons (TPH) - gasoline range organics (TPH-GRO) by EPA Method 8260B, and TPH - diesel range organics (TPH-DRO) and TPH - residual range organics (TPH-ORO) by EPA

Method 8015M, polycyclic aromatic hydrocarbons (PAHs): acenaphthene, anthracene, benzo (a) anthracene, benzo (a) pyrene, benzo (b) fluoranthene, chrysene, dibenz (a,h) anthracene, fluoranthene, fluorene, indeno (1,2,3-cd) pyrene, pyrene, 1-methylnaphthalene, 2-methylnaphthalene by EPA method 8270E-SIM, Total Metals by EPA method 6020, and hexavalent chromium by EPA method 7199, sodium absorption ratio (SAR) by calculated results, specific conductance by Mod. 9050A and, pH by 9045D. The laboratory reports and chain-of-custody documentation are included as standalone attachments.

A summary of the laboratory data for the soil samples is included in Tables 2 through 5. The laboratory analyses indicate that organic petroleum constituents in all 10 soil samples collected from the sidewalls and floor of the April 2025 excavations achieved the Colorado Energy and Carbon Management Commission's (ECMC) Table 915-1 protection of groundwater soil screening levels (PGSSLs) of organic constituents.

Twenty-five background samples, collected at similar depths and lithologies, in native soil off-site, adjacent to the former 70 Ranch wellhead and flowline, exceeded the ECMC Table 915-1 soil suitability for reclamation constituents pH, the ECMC Table 915-1 residential soil screening limits (RSSLs) for arsenic, and the ECMC Table 915-1 PGSSLs for barium, lead, and selenium. All excavation confirmation samples comply with Table 915-1 standards when compared to background concentration levels.

A total of approximately 42 cubic yards of petroleum-impacted soil were removed via excavation by Fortress Industrial from the location during the April 2025 excavation. Impacted soil was disposed of at Buffalo Ridge Landfill in Keenesburg, CO as non-hazardous waste. The excavation was backfilled with clean imported soil.

4.0 DISCUSSION


As demonstrated by the soil sampling, petroleum-impacted soil was removed from the two 70 Ranch flowline impacted locations by excavation. This was confirmed by analysis of soil samples collected from the exterior sidewalls and the floor, which were below the ECMC Table 915-1 PGSSLs for organic petroleum constituents in all 10 confirmation samples collected upon completion of the April 2025 excavation. Groundwater was not encountered in either of the two excavations.

Background samples were collected in twenty-five locations from areas not impacted by oil and gas development at similar depths and lithologies as confirmation samples collected at the location and analyzed for ECMC Table 915-1 metals and soil suitability for reclamation standards (SSR) (pH, EC, SAR, and Boron). The samples were used to characterize native soil and successfully attribute elevated metals and inorganic concentrations observed in the excavation confirmation samples to native soil conditions.

5.0 REMARKS

The discussion and conclusions contained in this report represent our professional opinions. These opinions are based on currently available information and are arrived at in accordance with currently accepted hydrogeologic and engineering practices at this time and location. Other than this, no warranty is implied or intended.

This report was prepared by **FREMONT ENVIRONMENTAL INC.**



12/31/25

Date _____

Ethan D. Black, P.G.

Geologist

Reviewed by:



Ethan Black
for PVH

12/3/25

Date _____

Paul V. Henehan, P.E.

Senior Consultant

TABLES

TABLE 1
FIELD DATA SUMMARY TABLE
NOBLE 100322
70 RANCH USX BB 09-99HZ, WELD COUNTY, COLORADO
REM # 36492

Sample ID	Sample Date	Consultant	Depth (ft)	GPS Data		PDOP Value	VOC Concentration (ppm)
				Latitude	Longitude		
WH01@6	9/16/2024	Entrada	6	40.4206280	-104.4483980	-	62.8
FLR01@4	9/16/2024	Entrada	4	40.4206290	-104.4484240	-	5.8
WH01-N@4	9/16/2024	Entrada	4	40.4206430	-104.4483970	-	102.3
WH01-E@4	9/16/2024	Entrada	4	40.4206280	-104.4483740	-	32.6
WH01-S@4	9/16/2024	Entrada	4	40.4206140	-104.4483990	-	1.4
FL01-3.0	10/9/2024	Fremont	3	40.4203149	-104.4478109	0.9	0.0
FL01RW-3.0	10/9/2024	Fremont	3	40.4206367	-104.4483993	1.0	0.3
FL02-3.0	10/9/2024	Fremont	3	40.4201279	-104.4473635	0.8	0.0
FL03-3.0	10/9/2024	Fremont	3	40.4200166	-104.4463926	0.8	0.3
FL04-3.0	10/9/2024	Fremont	3	40.4198400	-104.4444171	0.9	0.0
SEP01FL-3.0	10/8/2024	Fremont	3	40.4203685	-104.4443441	0.8	1.1
NE WALL 4FT (FLR01)	04/07/2025	Fremont	4	40.4206377	-104.4483918	-	0.0
SE WALL 4FT (FLR01)	04/07/2025	Fremont	4	40.4206145	-104.4483952	-	0.0
NW WALL 4FT (FLR01)	04/07/2025	Fremont	4	40.4206446	-104.4484328	0.7	0.0
SW WALL 4FT (FLR01)	04/07/2025	Fremont	4	40.4206163	-104.4484338	-	0.0
FLOOR 5FT (FLR01)	04/07/2025	Fremont	5	40.4206287	-104.4484160	-	0.0
N WALL 4FT (FL04)	04/08/2025	Fremont	4	40.4198399	-104.4443984	0.8	0.0
S WALL 4FT (FL04)	04/08/2025	Fremont	4	40.4198071	-104.4443977	0.8	0.0
E WALL 4FT (FL04)	04/08/2025	Fremont	4	40.4198260	-104.4443718	0.8	0.0
W WALL 4FT (FL04)	04/08/2025	Fremont	4	40.4198229	-104.4444240	0.9	0.0
FLOOR 5FT (FL04)	04/08/2025	Fremont	5	40.4198399	-104.4444000	-	0.0
BG01	10/9/2024	Fremont	0.5, 2, 4	40.4195473	-104.4438417	0.8	0.0
BG02	10/9/2024	Fremont	0.5, 2, 4	40.4200420	-104.4432338	0.8	0.0
BG03	10/9/2024	Fremont	0.5, 2, 4	40.4203564	-104.4432508	0.8	0.0
BG04	10/9/2024	Fremont	0.5, 2, 4	40.4206625	-104.4435325	0.9	0.0

**TABLE 1
FIELD DATA SUMMARY TABLE
NOBLE 100322
70 RANCH USX BB 09-99HZ, WELD COUNTY, COLORADO
REM # 36492**

Sample ID	Sample Date	Consultant	Depth (ft)	GPS Data		PDOP Value	VOC Concentration (ppm)
				Latitude	Longitude		
BG05	10/9/2024	Fremont	0.5, 2, 4	40.4208751	-104.4442787	0.9	0.0
BKG-1	4/8/2025	Fremont	4,5	40.4196239	-104.4446588	0.80	0.0
BKG-2	4/8/2025	Fremont	4,5	40.4197174	-104.4471685	0.80	0.0
BKG-3	4/8/2025	Fremont	4,5	40.4209728	-104.4470730	0.70	0.0
BKG-4	4/8/2025	Fremont	4,5	40.4203412	-104.4457739	0.70	0.0
BKG-5	4/8/2025	Fremont	4,5	40.4210025	-104.4444424	0.70	0.0

1. Global Positioning System (GPS) data is provided in decimal degrees using North American Datum (NAD) 83 UTMZone 13 North.

2. Volatile organic compound (VOC) concentrations are measured in the field using a photoionization detector (PID).

PDOP = Position Dilution of Precision

ppm = Parts per million

in. = Inches

ft. = Feet

bgs = Below ground surface

Material excavated and transported off site for disposal.

TABLE 2
SUMMARY OF VOLATILE ORGANIC SOIL CHEMISTRY DATA
NOBLE 100322
70 RANCH USX BB 09-99HZ, WELD COUNTY, COLORADO
REM # 36492

Sample ID	Sample Date	Depth (ft)	Benzene (mg/kg)	Toluene (mg/kg)	Ethyl-Benzene (mg/kg)	Xylenes (mg/kg)	1,2,4-Trimethyl-Benzene (mg/kg)	1,3,5-Trimethyl-Benzene (mg/kg)	Naphthalene (mg/kg)	TPH (mg/kg)	TPH GRO (mg/kg)	TPH DRO (mg/kg)	TPH ORO (mg/kg)
ECMC Table 915-1 Limits (Residential SSL)			1.2	490	5.8	58	30	27	2	500	500**		
ECMC Table 915-1 Limits (Protection of Groundwater SSL)			0.0026	0.69	0.78	9.9	0.0081	0.0087	0.0038	500	500**		
FLR01@4	9/16/2024	4	<0.00200	<0.00200	<0.00200	<0.00200	<0.00200	<0.00200	<0.002	0.383	0.383	<25.0	<100
WH01-N@4	9/16/2024	4	<0.00200	<0.00200	<0.00200	<0.00200	<0.00200	<0.00200	<0.002	<125.200	<0.200	<25.0	<100
FL01RW - 3.0	10/9/2024	3	<0.0020	<0.0050	<0.0050	<0.010	<0.0050	<0.0050	<0.0038	<500	<0.50	<50	<50
FL02 - 3.0	10/9/2024	3	<0.0020	<0.0050	<0.0050	<0.010	<0.0050	<0.0050	<0.0038	<500	<0.50	<50	<50
FL03 - 3.0	10/9/2024	3	<0.0020	<0.0050	<0.0050	<0.010	<0.0050	<0.0050	<0.0038	<500	<0.50	<50	<50
FL04 - 3.0	10/9/2024	3	<0.0020	<0.0050	<0.0050	<0.010	<0.0050	<0.0050	<0.0038	<500	<0.50	<50	<50
SEP01FL-3.0	10/8/2024	3	<0.0020	<0.0050	<0.0050	<0.010	<0.0050	<0.0050	<0.0038	<500	<0.50	<50	<50
NE WALL 4FT (FLR01)	04/07/2025	4	<0.00100	0.00327	<0.00250	0.00088	<0.00500	<0.00500	<0.0200	<500	0.0894	26.8	53.6
SE WALL 4FT (FLR01)	04/07/2025	4	<0.00100	0.00264	<0.00250	<0.00650	<0.00500	<0.00500	<0.0200	<500	0.0253	<4.00	<4.00
NW WALL 4FT (FLR01)	04/07/2025	4	<0.00100	<0.00500	<0.00250	<0.00650	<0.00500	<0.00500	<0.0200	<500	0.147	1.83	2.44
SW WALL 4FT (FLR01)	04/07/2025	4	<0.00100	<0.00500	<0.00250	<0.00650	<0.00500	<0.00500	<0.0200	<500	0.0264	<4.00	<4.00
FLOOR 5FT (FLR01)	04/07/2025	5	<0.00100	<0.00500	<0.00250	<0.00650	<0.00500	<0.00500	<0.0200	<500	0.0229	<4.00	<4.00
N WALL 4FT (FL04)	04/08/2025	4	<0.00100	0.002	<0.00250	<0.00650	<0.00500	<0.00500	<0.0200	<500	<0.100	<4.00	1.42
S WALL 4FT (FL04)	04/08/2025	4	<0.00100	0.00228	<0.00250	<0.00650	<0.00500	<0.00500	<0.0200	<500	<0.100	1.67	2.6
E WALL 4FT (FL04)	04/08/2025	4	<0.00100	0.00197	<0.00250	0.0014	<0.00500	<0.00500	<0.0200	<500	0.0265	1.86	4.05
W WALL 4FT (FL04)	04/08/2025	4	<0.00100	0.0021	<0.00250	<0.00650	<0.00500	<0.00500	<0.0200	<500	<0.100	<4.00	1.89
FLOOR 5FT (FL04)	04/08/2025	5	<0.00100	0.00205	<0.00250	<0.00650	<0.00500	<0.00500	<0.0200	<500	<0.100	<4.00	0.752

1. Bold values exceed the ECMC Table 915-1 limit(s)
 2. Red & blue highlighted soil analytical values indicate an exceedance of the referenced soil screening level (SSL)
 3. * Indicates laboratory minimum detection limit in excess of SSL
 4. ** Summation of GRO+DRO+ORO must be less than 500 mg/kg
- (<) = Analytical result is less than the indicated laboratory reporting limit.
TPH-GRO = Total petroleum hydrocarbons - gasoline range organics
TPH-DRO = Total petroleum hydrocarbons - diesel range organics
TPH-ORO = Total petroleum hydrocarbons - oil range organics
mg/kg = Milligrams per kilogram
ft. = Feet
bgs = Below ground surface
NA - Not analyzed
- Material excavated and transported off site for disposal.

TABLE 3
SUMMARY OF POLYCYCLIC AROMATIC HYDROCARBON SOIL CHEMISTRY DATA
NOBLE 100322
70 RANCH USX BB 09-99HZ, WELD COUNTY, COLORADO
REM # 36492

Sample ID	Sample Date	Depth (ft)	Acenaphthene (mg/kg)	Anthracene (mg/kg)	Benzo (a) Anthracene (mg/kg)	Benzo (a) Pyrene (mg/kg)	Benzo (b) Fluoranthene (mg/kg)	Benzo (k) Fluoranthene (mg/kg)	Chrysene (mg/kg)	Dibenzo (a,h) Anthracene (mg/kg)	Fluoranthene (mg/kg)	Fluorene (mg/kg)	Indeno (1,2,3-cd) Pyrene (mg/kg)	Pyrene (mg/kg)	1-Methyl - Naphthalene (mg/kg)	2-Methyl- Naphthalene (mg/kg)
ECMC Table 915-1 Limits (Residential SSL)			360	1800	1.1	0.11	1.1	11	110	0.11	240	240	1.1	180	18	24
ECMC Table 915-1 Limits (Protection of Groundwater SSL)			0.55	5.8	0.011	0.24	0.3	2.9	9	0.096	8.9	0.54	0.98	1.3	0.006	0.019
FLR01@4	9/16/2024	4	<0.020	<0.020	<0.005	<0.020	<0.020	<0.020	<0.020	<0.020	<0.020	0.055	<0.020	0.024	0.012	0.014
WH01-N@4	9/16/2024	4	<0.020	<0.020	<0.005	<0.020	<0.020	<0.020	<0.020	<0.020	<0.020	<0.020	<0.020	<0.020	<0.002	<0.002
FL01RW - 3.0	10/9/2024	3	<0.00500	<0.00500	<0.00500	<0.00500	<0.00500	<0.00500	<0.00500	<0.00500	<0.00500	<0.00500	<0.00500	<0.00500	<0.00500	<0.00500
FL02 - 3.0	10/9/2024	3	<0.00500	<0.00500	<0.00500	<0.00500	<0.00500	<0.00500	<0.00500	<0.00500	<0.00500	<0.00500	<0.00500	<0.00500	<0.00500	<0.00500
FL03 - 3.0	10/9/2024	3	<0.00500	<0.00500	<0.00500	<0.00500	<0.00500	<0.00500	<0.00500	<0.00500	<0.00500	<0.00500	<0.00500	<0.00500	<0.00500	<0.00500
FL04 - 3.0	10/9/2024	3	<0.00500	0.0107	0.0229	0.0128	0.0192	0.00796	0.0217	<0.00500	0.0495	<0.00500	0.0102	0.0431	<0.00500	<0.00500
SEP01FL-3.0	10/8/2024	3	<0.00500	<0.00500	<0.00500	<0.00500	<0.00500	<0.00500	<0.00500	<0.00500	<0.00500	<0.00500	<0.00500	<0.00500	<0.00500	<0.00500
NE WALL 4FT (FLR01)	04/07/2025	4	<0.00600	<0.00600	<0.00600	<0.00600	<0.00600	<0.00600	<0.00600	<0.00600	<0.00600	<0.00600	<0.00600	<0.00600	<0.0200	<0.0200
SE WALL 4FT (FLR01)	04/07/2025	4	<0.00600	<0.00600	<0.00600	<0.00600	<0.00600	<0.00600	<0.00600	<0.00600	<0.00600	<0.00600	<0.00600	<0.00600	<0.0200	<0.0200
NW WALL 4FT (FLR01)	04/07/2025	4	<0.00600	<0.00600	<0.00600	<0.00600	<0.00600	<0.00600	<0.00600	<0.00600	<0.00600	<0.00600	<0.00600	<0.00600	<0.0200	<0.0200
SW WALL 4FT (FLR01)	04/07/2025	4	<0.00600	<0.00600	<0.00600	<0.00600	<0.00600	<0.00600	<0.00600	<0.00600	<0.00600	<0.00600	<0.00600	<0.00600	<0.0200	<0.0200
FLOOR 5FT (FLR01)	04/07/2025	5	<0.00600	<0.00600	<0.00600	<0.00600	<0.00600	<0.00600	<0.00600	<0.00600	<0.00600	<0.00600	<0.00600	<0.00600	<0.0200	<0.0200
N WALL 4FT (FL04)	04/08/2025	4	<0.00600	<0.00600	<0.00600	<0.00600	<0.00600	<0.00600	<0.00600	<0.00600	<0.00600	<0.00600	<0.00600	<0.00600	<0.0200	<0.0200
S WALL 4FT (FL04)	04/08/2025	4	<0.00600	<0.00600	<0.00600	<0.00600	<0.00600	<0.00600	<0.00600	<0.00600	<0.00600	<0.00600	<0.00600	<0.00600	<0.0200	<0.0200
E WALL 4FT (FL04)	04/08/2025	4	<0.00600	<0.00600	<0.00600	<0.00600	<0.00600	<0.00600	<0.00600	<0.00600	0.00403	<0.00600	<0.00600	0.00365	<0.0200	<0.0200
W WALL 4FT (FL04)	04/08/2025	4	<0.00600	<0.00600	<0.00600	<0.00600	<0.00600	<0.00600	<0.00600	<0.00600	<0.00600	<0.00600	<0.00600	<0.00600	<0.0200	<0.0200
FLOOR 5FT (FL04)	04/08/2025	5	<0.00600	<0.00600	<0.00600	<0.00600	<0.00600	<0.00600	<0.00600	<0.00600	<0.00600	<0.00600	<0.00600	<0.00600	<0.0200	<0.0200

1. Bold values exceed the ECMC Table 915-1 limit(s)

2. Red & blue highlighted soil analytical values indicate an exceedance of the referenced soil screening level (SSL)

3. * Indicates laboratory minimum detection limit in excess of SSL

4. ** Summation of GRO+DRO+ORO must be less than 500 mg/kg

(<) = Analytical result is less than the indicated laboratory reporting limit.

TPH-GRO = Total petroleum hydrocarbons - gasoline range organics

TPH-DRO = Total petroleum hydrocarbons - diesel range organics

TPH-ORO = Total petroleum hydrocarbons - oil range organics

mg/kg = Milligrams per kilogram

ft. = Feet

bgs = Below ground surface

NA - Not analyzed

Material excavated and transported off site for disposal.

TABLE 4
SUMMARY OF SOIL SUITABILITY FOR RECLAMATION
NOBLE 100322
70 RANCH USX BB 09-99HZ, WELD COUNTY, COLORADO
REM # 36492

Sample ID	Sample Date	Depth (ft)	pH (Standard Units)	EC (mmhos/cm)	SAR (Standard Units)	Boron (mg/L)
ECMC Table 915-1 Soil Suitability Limits			6 - 8.3	<4	<6	2
FLR01@4	9/16/2024	4	8.39	0.222	0.182	<0.100
WH01-N@4	9/16/2024	4	8.31	0.22	0.606	<0.101
FLO1RW - 3.0	10/9/2024	3	8.72	0.103	0.249	<2.00
FL02 - 3.0	10/9/2024	3	6.79	0.271	0.444	<2.00
FL03 - 3.0	10/9/2024	3	8.45	0.153	0.42	<2.00
FL04 - 3.0	10/9/2024	3	6.71	0.0744	0.0702	<2.00
SEP01FL-3.0	10/8/2024	3	7.87	0.132	0.0603	<2.00
NE WALL 4FT (FLR01)	04/07/2025	4	8.25	0.282	0.4	0.0899
SE WALL 4FT (FLR01)	04/07/2025	4	8.15	0.0761	0.351	0.0293
NW WALL 4FT (FLR01)	04/07/2025	4	8.74	0.208	1.98	0.06
SW WALL 4FT (FLR01)	04/07/2025	4	8.24	0.16	2.36	<1.00
FLOOR 5FT (FLR01)	04/07/2025	5	7.72	0.0732	1.87	0.0263
N WALL 4FT (FL04)	04/08/2025	4	7.1	0.0657	0.285	0.0568
S WALL 4FT (FL04)	04/08/2025	4	7.6	0.171	0.137	0.0567
E WALL 4FT (FL04)	04/08/2025	4	6.29	0.0602	0.256	0.0635
W WALL 4FT (FL04)	04/08/2025	4	7.21	0.0368	0.18	0.058
FLOOR 5FT (FL04)	04/08/2025	5	7.36	0.0691	0.165	0.0544
BG01 - 0.5'	10/09/2024	0.5	6.06	0.0554	0.0196	<2.00
BG02 - 0.5'	10/09/2024	0.5	6.14	0.0468	0.0217	<2.00
BG03 - 0.5'	10/09/2024	0.5	6.31	0.0819	0.023	<2.00
BG04 - 0.5'	10/09/2024	0.5	6.15	0.0644	0.0241	<2.00
BG05 - 0.5'	10/09/2024	0.5	6.35	0.045	0.0169	<2.00
BG01 - 2.0'	10/09/2024	2	6.89	0.0429	0.0237	<2.00
BG02 - 2.0'	10/09/2024	2	7.11	0.0534	0.0217	<2.00
BG03 - 2.0'	10/09/2024	2	7.1	0.0613	0.0194	<2.00
BG04 - 2.0'	10/09/2024	2	7.05	0.0469	0.0188	<2.00
BG05 - 2.0'	10/09/2024	2	6.93	0.0654	0.0206	<2.00

TABLE 4
SUMMARY OF SOIL SUITABILITY FOR RECLAMATION
NOBLE 100322
70 RANCH USX BB 09-99HZ, WELD COUNTY, COLORADO
REM # 36492

Sample ID	Sample Date	Depth (ft)	pH (Standard Units)	EC (mmhos/cm)	SAR (Standard Units)	Boron (mg/L)
ECMC Table 915-1 Soil Suitability Limits			6 - 8.3	<4	<6	2
BG01 - 4.0'	10/09/2024	4	7.24	0.0343	0.0216	<2.00
BG02 - 4.0'	10/09/2024	4	7.28	0.0342	0.0193	<2.00
BG03 - 4.0'	10/09/2024	4	6.88	0.0359	0.02	<2.00
BG04 - 4.0'	10/09/2024	4	7.28	0.0316	0.0187	<2.00
BG05 - 4.0'	10/09/2024	4	7.23	0.0321	0.0203	<2.00
BKG-1 4FT	04/07/2025	4	8.64	0.186	1.17	<1.00
BKG-1 5FT	04/07/2025	5	8.53	0.123	0.88	<1.00
BKG-2 4FT	04/07/2025	4	8.17	0.291	0.415	0.0854
BKG-2 5FT	04/07/2025	5	8.27	0.0322	0.454	0.0858
BKG-3 4FT	04/07/2025	4	8.63	0.129	1.65	0.0367
BKG-3 5FT	04/07/2025	5	8.75	0.172	1.88	0.0412
BKG-4 4FT	04/07/2025	4	7.86	0.0587	0.385	0.0436
BKG-5 4FT	04/07/2025	4	8.11	0.109	0.744	<1.00
BKG-4 4FT	04/08/2025	4	6.84	0.101	0.232	0.0498
BKG-4 5FT	04/08/2025	5	7.16	0.461	0.281	0.0494
Maximum Background Concentration			8.75	0.461	1.88	0.0858

1. **Bold** faced values exceed the ECMC Table 915-1 limit(s), but are within background concentrations.

2. **Bold** faced values exceed the ECMC Table 915-1 limit(s) and native background concentrations.

3. Brown highlighted soil analytical values indicate a regulatory exceedance.

NA - Not analyzed/Not applicable

Material excavated and transported off site for disposal.

TABLE 5
SUMMARY OF METALS IN SOIL CHEMISTRY DATA
NOBLE 100322
70 RANCH USX BB 09-99HZ, WELD COUNTY, COLORADO
REM # 36492

Sample ID	Sample Date	Depth (ft)	Arsenic (mg/kg)	Barium (mg/kg)	Cadmium (mg/kg)	Chromium (VI) (mg/kg)	Copper (mg/kg)	Lead (mg/kg)	Nickel (mg/kg)	Selenium (mg/kg)	Silver (mg/kg)	Zinc (mg/kg)
ECMC Table 915-1 Limits (Residential SSL)			0.68	15000	71	0.3	3100	400	1500	390	390	23000
ECMC Table 915-1 Limits (Protection of Groundwater SSL)			0.29	82	0.38	0.00067	46	14	26	0.26	0.8	370
FLR01@4	9/16/2024	4	2.01	203	<0.0886	<0.244	<8.86	34.6	3.49	<0.230	<0.0886	<32.8
WH01-N@4	9/16/2024	4	2.55	76.9	<0.0859	<0.244	<8.59	5.98	2.86	<0.223	<0.0859	<31.8
FL01RW - 3.0	10/9/2024	3	1.69	54.9	<0.200	<0.30	2.18	6.08	2.02	<0.260	<0.0200	8.76
FL02 - 3.0	10/9/2024	3	1.75	33.9	<0.200	<0.30	6.81	3.68	4.68	<0.260	0.0763	16.5
FL03 - 3.0	10/9/2024	3	3.06	67.4	<0.200	<0.30	2.76	4.54	3.03	0.334	<0.0200	12.2
FL04 - 3.0	10/9/2024	3	2.22	34.3	<0.200	<0.30	2.77	3.64	2.39	<0.260	<0.0200	10.2
SEP01FL-3.0	10/8/2024	3	1.76	37.2	<0.200	<0.30	2.12	3.82	1.77	<0.260	<0.0200	8.83
NE WALL 4FT (FLR01)	04/07/2025	4	2.05	217	0.108	<1.00	4.88	38.5	3.47	0.348	<0.500	16.6
SE WALL 4FT (FLR01)	04/07/2025	4	1.64	28	<1.00	<1.00	2.25	2.44	1.79	0.214	<0.500	9.6
NW WALL 4FT (FLR01)	04/07/2025	4	1.76	45.2	<1.00	<1.00	2.56	3.71	2.14	0.204	<0.500	11
SW WALL 4FT (FLR01)	04/07/2025	4	1.65	30.6	<1.00	<1.00	1.81	3.2	2.28	0.353	<0.500	8.32
FLOOR 5FT (FLR01)	04/07/2025	5	2.6	23	<1.00	<1.00	1.89	1.88	1.75	<2.50	<0.500	9.54
N WALL 4FT (FL04)	04/08/2025	4	1.28	32	<1.00	<1.00	1.95	2.9	1.9	0.287	<0.500	8.8
S WALL 4FT (FL04)	04/08/2025	4	1.72	28.4	<1.00	<1.00	2.14	2.47	2.26	0.224	<0.500	12
E WALL 4FT (FL04)	04/08/2025	4	1.7	31.9	<1.00	<1.00	2.33	3.63	1.95	0.231	<0.500	10.8
W WALL 4FT (FL04)	04/08/2025	4	2.15	35.2	<1.00	<1.00	2.25	2.78	2.66	0.231	<0.500	11.1
FLOOR 5FT (FL04)	04/08/2025	5	2.69	41.7	<1.00	<1.00	2.55	2.63	2.83	0.186	<0.500	11.7
BG01 - 0.5'	10/09/2024	0.5	1.3	22.4	<0.200	<0.30	1.72	3.38	1.4	<0.260	<0.0200	7.61
BG02 - 0.5'	10/09/2024	0.5	1.46	28.2	<0.200	<0.30	1.88	5.74	1.52	<0.260	<0.0200	8.11
BG03 - 0.5'	10/09/2024	0.5	1.8	23.3	<0.200	<0.30	1.77	3.84	1.4	<0.260	<0.0200	7.53
BG04 - 0.5'	10/09/2024	0.5	1.47	23.5	<0.200	<0.30	1.89	3.59	1.55	<0.260	<0.0200	8.22
BG05 - 0.5'	10/09/2024	0.5	1.48	24.2	<0.200	<0.30	1.84	3.69	1.56	<0.260	<0.0200	8.33
BG01 - 2.0'	10/09/2024	2	2.41	44.7	<0.200	<0.30	1.85	5.11	2.12	<0.260	<0.0200	7.75
BG02 - 2.0'	10/09/2024	2	1.48	25.2	<0.200	<0.30	1.6	2.49	1.46	<0.260	<0.0200	6.58
BG03 - 2.0'	10/09/2024	2	1.89	28.7	<0.200	<0.30	1.74	3.56	1.65	<0.260	<0.0200	7.59
BG04 - 2.0'	10/09/2024	2	1.59	25.5	<0.200	<0.30	1.53	2.57	1.48	<0.260	<0.0200	8.12
BG05 - 2.0'	10/09/2024	2	1.79	26.7	<0.200	<0.30	1.61	2.36	1.6	<0.260	<0.0200	6.83
BG01 - 4.0'	10/09/2024	4	1.96	24.4	<0.200	<0.30	1.47	3.16	1.54	<0.260	<0.0200	7.15
BG02 - 4.0'	10/09/2024	4	2.87	31.6	<0.200	<0.30	1.85	2.72	2.02	<0.260	<0.0200	8.37
BG03 - 4.0'	10/09/2024	4	1.5	24.2	<0.200	<0.30	1.42	2.49	1.48	<0.260	<0.0200	6.52
BG04 - 4.0'	10/09/2024	4	1.68	25.7	<0.200	<0.30	1.28	2.29	1.46	<0.260	<0.0200	6.35
BG05 - 4.0'	10/09/2024	4	1.81	39.7	<0.200	<0.30	1.42	2.44	1.54	<0.260	<0.0200	6.23
BKG-1 4FT	04/07/2025	4	1.45	31.8	<1.00	<1.00	1.94	2.26	2.1	<2.50	<0.500	10.5
BKG-1 5FT	04/07/2025	5	2.19	49.3	<1.00	<1.00	2.51	5.55	2.32	<2.50	<0.500	10.6
BKG-2 4FT	04/07/2025	4	2.92	192	0.169	<1.00	5.88	66.9	3.58	<2.50	<0.500	17.1

TABLE 5
SUMMARY OF METALS IN SOIL CHEMISTRY DATA
NOBLE 100322
70 RANCH USX BB 09-99HZ, WELD COUNTY, COLORADO
REM # 36492

Sample ID	Sample Date	Depth (ft)	Arsenic (mg/kg)	Barium (mg/kg)	Cadmium (mg/kg)	Chromium (VI) (mg/kg)	Copper (mg/kg)	Lead (mg/kg)	Nickel (mg/kg)	Selenium (mg/kg)	Silver (mg/kg)	Zinc (mg/kg)
ECMC Table 915-1 Limits (Residential SSL)			0.68	15000	71	0.3	3100	400	1500	390	390	23000
ECMC Table 915-1 Limits (Protection of Groundwater SSL)			0.29	82	0.38	0.00067	46	14	26	0.26	0.8	370
BKG-2 5FT	04/07/2025	5	4.23	394	0.163	<1.00	6.75	106	4.74	0.294	<0.500	23.6
BKG-3 4FT	04/07/2025	4	2.81	29	<1.00	<1.00	2.5	2.65	2.34	<2.50	<0.500	12.3
BKG-3 5FT	04/07/2025	5	2.84	901	<1.00	<1.00	3.15	4.88	3.35	0.209	<0.500	16.5
BKG-4 4FT	04/07/2025	4	2.44	23.9	<1.00	<1.00	1.92	2.07	2.06	0.368	<0.500	9.29
BKG-5 4FT	04/07/2025	4	1.55	35.6	<1.00	<1.00	1.75	7.13	1.92	<2.50	<0.500	10.1
BKG-4 4FT	04/08/2025	4	1.82	33.3	<1.00	<1.01	2.28	2.49	2.51	0.219	<0.500	11
BKG-4 5FT	04/08/2025	5	2.51	74.2	<1.00	<1.00	2.33	8.75	2.73	0.387	<0.500	12
1.25x Maximum Background Concentration			5.29	1126.25	0.21	0.00	8.44	132.50	5.93	0.48	0.00	29.50

1. **Bold** faced values exceed the ECMC Table 915-1 limit(s), but are within 1.25x background concentrations.

2. **Bold** faced values exceed the ECMC Table 915-1 limit(s) and native background concentrations.

3. Red & blue highlighted soil analytical values indicate an exceedance of the referenced soil screening level (SSL).

4. Non-detect background results accounted for in the highest background concentration by using the reporting limit.

ECMC = Energy & Carbon Management Commission

(<) = Analytical result is less than the indicated laboratory reporting limit.

mg/kg = Milligrams per kilogram

ft. = Feet

bgs = Below ground surface

* Indicates laboratory minimum detection limit in excess of SSL

NA - Not analyzed/Not applicable

Material excavated and transported off site for disposal.

FIGURES

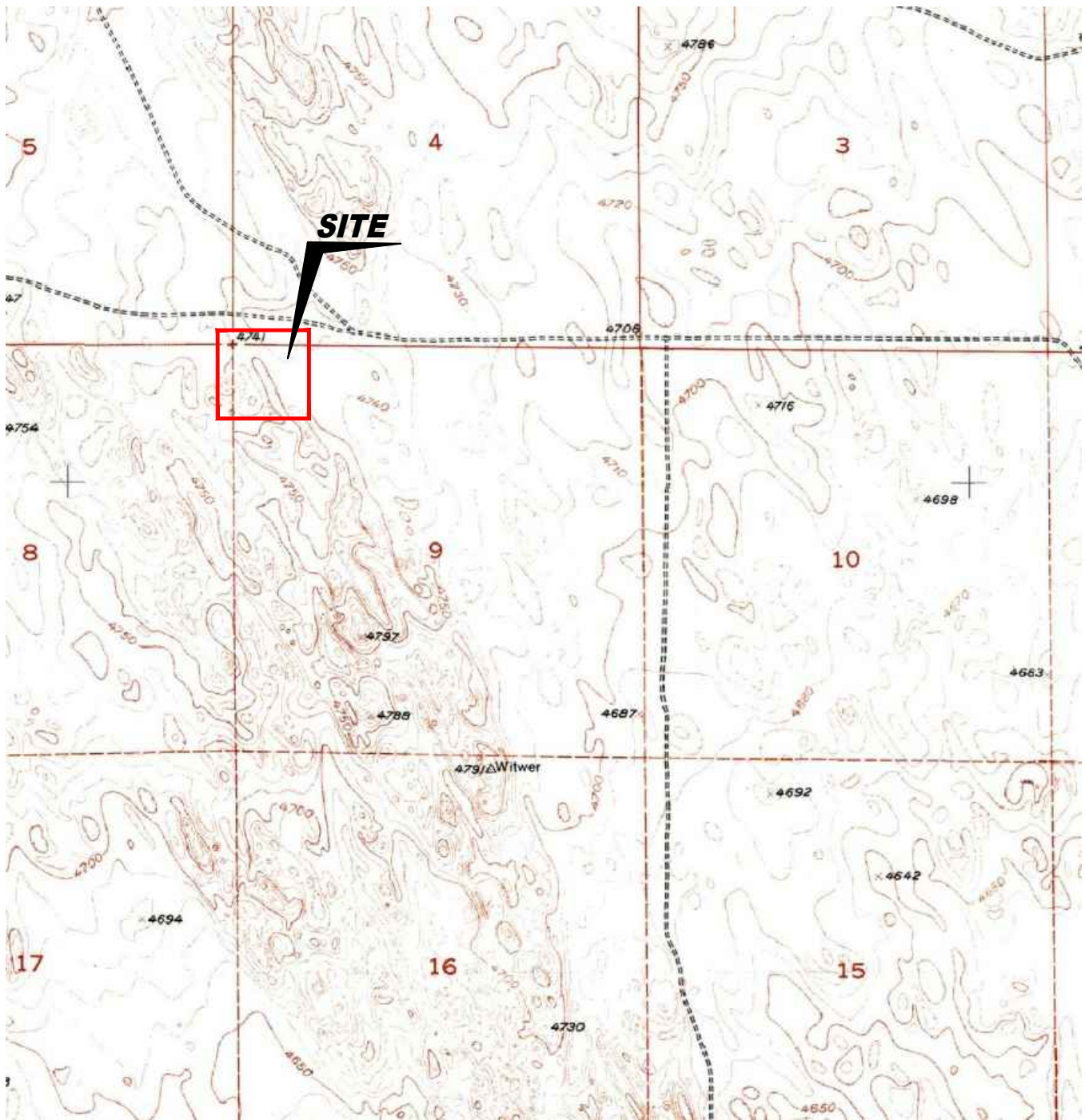


Figure 1
SITE LOCATION MAP

Noble Energy, Inc.
70 RANCH USX BB 09-99HZ
 NWNW Sec. 9, T5N, R63W, 6th PM
 Weld County, Colorado
 40.420624°, -104.448388°

Project No. CO24-232	API # 05-123-30639	Facility #
Date 1/5/26	Remediation # 36492	Filename 24232T1



USGS 7.5 MINUTE SERIES (TOPOGRAPHIC)



LEGEND

● SOIL BORING LOCATION	○ ABOVE GROUND STORAGE TANK	FORMER FACILITY	— EXTENT OF EXCAVATION
▲ DECOMMISSIONING PID READING LOCATION	▲ EXCAVATION PID READING LOCATION	EXCAVATED AREA	- - - FORMER FLOW LINE
			— FENCE LINE
			CONTAINMENT BERM
			— CONTAINMENT WALL

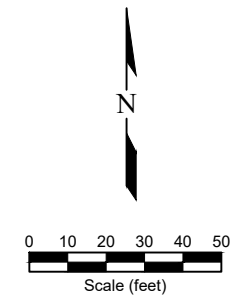


Figure 2
SITE MAP
Noble Energy, Inc.
70 RANCH USX BB 09-99HZ
 NWNW Sec. 9, T5N, R63W, 6th PM
 Weld County, Colorado
 40.420624°, -104.448388°

Project No. CO24-232	API # 05-123-30639	Facility #	
Date 1/5/26	Remediation # 36492	Filename 24232Q1	



LEGEND

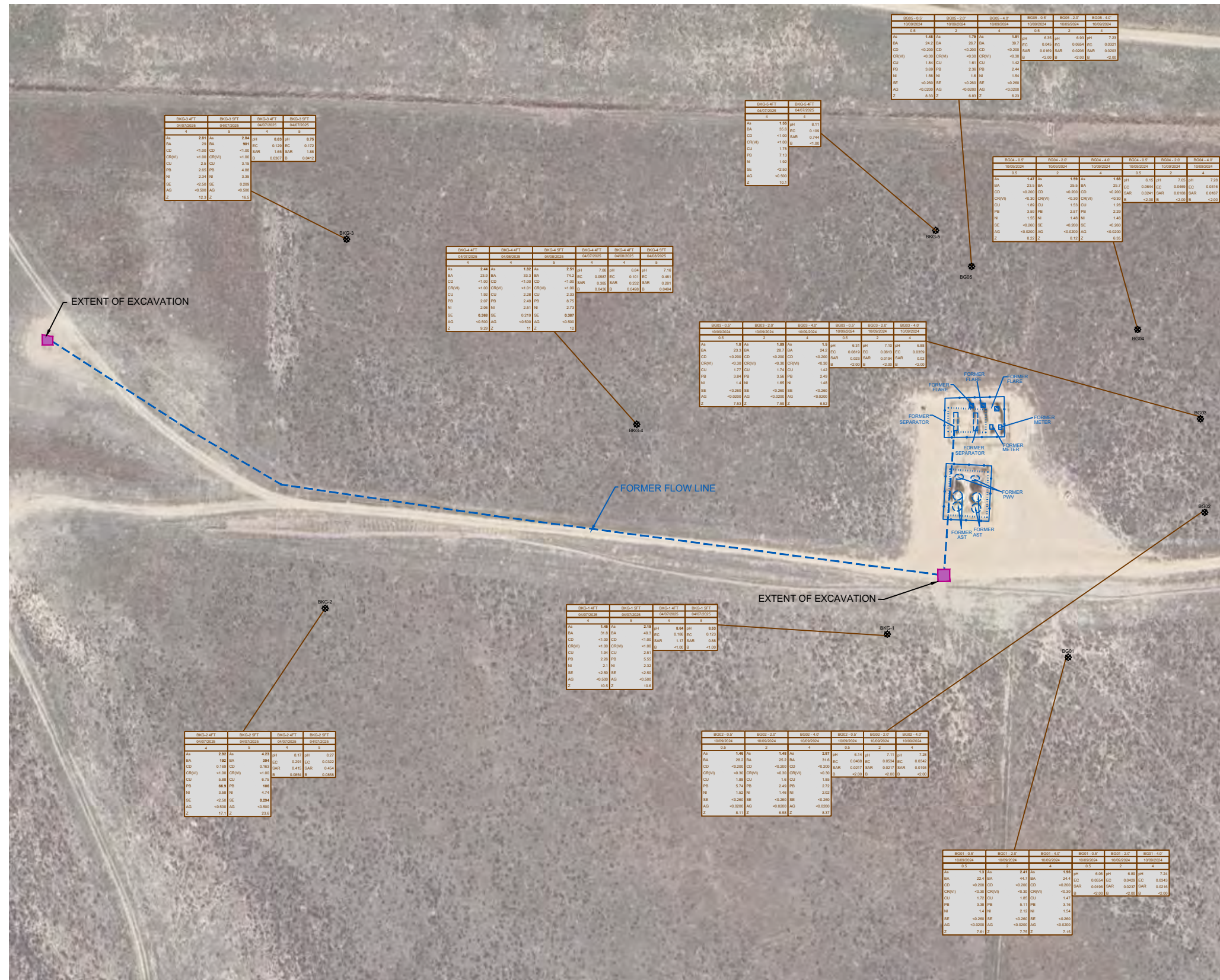
- SOIL BORING LOCATION
- ABOVE GROUND STORAGE TANK
- FORMER FACILITY
- FORMER FLOW LINE
- FENCE LINE
- CONTAINMENT BERM
- CONTAINMENT WALL
- DECOMMISSIONING SOIL SAMPLE LOCATION
- EXCAVATED AREA

SAMPLE	SAMPLE ID	SAMPLE	SAMPLE ID
DATE	DATE SAMPLED	DATE	DATE SAMPLED
DEPTH	DEPTH (ft)	DEPTH	DEPTH (ft)
As	<0.01	As	<0.01
BA	<0.01	BA	<0.01
CD	<0.01	CD	<0.01
CR(V)	<0.05	CR(V)	<0.05
Ni	<0.05	Ni	<0.05
Pb	<0.05	Pb	<0.05
Se	<0.5	Se	<0.5
Ag	<0.05	Ag	<0.05
Z	<0.05	Z	<0.05



Figure 4
METALS AND INORGANIC SOIL CHEMISTRY MAP
 Noble Energy, Inc.
 70 RANCH USX BB 09-99HZ
 NWNW Sec. 9, T5N, R63W, 6th PM
 Weld County, Colorado
 40.420624°, -104.448388°

Project No. CO24-232	API # 05-123-30639	Facility #	
Date 1/5/26	Remediation # 36492	Filename 24232Q1	



**Figure 5
BACKGROUND SAMPLE SOIL CHEMISTRY MAP
Noble Energy, Inc.
70 RANCH USX BB 09-99HZ
NWNW Sec. 9, T5N, R63W, 6th PM
Weld County, Colorado
40.420624°, -104.448388°**

Project No. CO24-232	API # 05-123-30639	Facility #	
Date 1/5/26	Remediation # 36492	Filename 24232Q1	

APPENDIX
PHOTO LOG

Photo Log



Description:

Photo Log



Description:

--

Photo Log



Description:

Photo Log



Description:

Photo Log



Description:

Photo Log



Description:

--

Photo Log



Description: