

Form 19 Data Package

Federal 32-10 FL1-B7
Remediation #: 41913



Prepared for:
CRESTONE PEAK RESOURCES OPERATING LLC - 10633

November 25, 2025

SWNE Sec. 10 T3S, R65W, 6th

Facility ID: 473092
API #: 123-17137

Tables

Table 1
Soil Sample Locations
CRESTONE PEAK RESOURCES OPERATING LLC
Federal 32-10 FL1-B7
Remediation Project #41913

Sample ID	Date	Depth	PID (ppm)	Latitude	Longitude	Accuracy Value (meters)	Photo (Y/N)	Lab (Y/N)
FL1-B12@4	10/29/2025	4	0	40.242306	-104.646391	0.31	Yes	Yes
FL1-N12@3	10/29/2025	3	0	40.242316	-104.646391	0.24	Yes	No
FL1-E12@3	10/29/2025	3	0	40.242314	-104.646384	0.29	Yes	No
FL1-S12@3	10/29/2025	3	0	40.242301	-104.646387	0.3	Yes	No
FL1-W12@3	10/29/2025	3	0	40.242304	-104.646399	0.29	Yes	No
FL1-B12@3	10/29/2025	3	0	40.242316	-104.646398	0.17	Yes	Yes
FL1-B1@3	10/29/2025	3	0	40.242449	-104.646468	0.18	Yes	Yes
FL1-B2@3	10/29/2025	3	0	40.242763	-104.646584	0.35	Yes	No
FL1-B3@3	10/29/2025	3	0	40.243108	-104.646633	0.28	Yes	Yes
FL1-B4@3	10/29/2025	3	0	40.243408	-104.646673	0.26	Yes	No
FL1-B5@3	10/29/2025	3	0	40.243699	-104.64671	0.34	Yes	Yes
FL1-B6@3	10/29/2025	3	0	40.24405	-104.646818	0.31	Yes	No
FL1-B7@3	10/29/2025	3	0	40.244388	-104.646986	0.36	Yes	Yes
FL1-B8@3	10/29/2025	3	0	40.244545	-104.64702	0.25	Yes	No
FL1-B9@3	10/29/2025	3	0	40.244737	-104.646973	0.18	Yes	Yes
FL10-B10@3	10/30/2025	3	0	40.244869	-104.646884	0.22	Yes	No
FL1-B11@3	10/30/2025	3	1	40.24504	-104.646743	0.25	Yes	Yes

Notes

PID photoionization detector
ppm parts per million

Table 2
Soil Sample Analytical Results
Crestone Peak Resources Operating LLC - 10633
Federal 32-10 FL1-B7
Remediation Project # 41913

Constituent of Concern	ECMC Table 915	ECMC Table 915-	Results						
	1 RSSL's	1 GWSSL's	FL1-B12@4	FL1-B1@3	FL1-B3@3	FL1-B5@3	FL1-B7@3	FL1-B9@3	FL1-B11@3
Sample Name	--	--	FL1-B12@4	FL1-B1@3	FL1-B3@3	FL1-B5@3	FL1-B7@3	FL1-B9@3	FL1-B11@3
Date	--	--	10/29/2025	10/29/2025	10/29/2025	10/29/2025	10/29/2025	10/29/2025	10/30/2025
PID (ppm)	--	--	0.0	0.0	0.0	0.0	0.0	0.0	0.0
Depth (feet)	--	--	4	3	3	3	3	3	3
TPH (mg/kg)									
TPH - GRO	--	--	<2.69	<2.73	<3.35	<3.44	<2.85	<2.69	<3.15
TPH - DRO	--	--	<4.15	<4.18	<4.68	<4.76	<4.28	<4.15	<4.52
TPH - ORO	--	--	6.89	5.98	5.03	<4.76	<4.28	<4.15	<4.52
TPH - Total	500	--	<13.73	<12.89	<13.06	<12.96	<11.41	<10.99	<12.19
Soil Suitability for Reclamation									
EC (mmhos/cm)	4	--	0.22	0.11	0.118	0.115	0.0928	0.143	0.173
SAR (ratio)	6	--	0.605	0.214	0.982	0.183	0.951	0.256	0.162
pH (units)	6-8.3	--	8.06	6.81	6.92	7.69	7.25	7.30	8.49
boron (mg/L)	2	--	<0.100	<0.100	<0.100	<0.100	<0.100	<0.100	<0.100
Organic Compounds in Soils (mg/kg)									
benzene	1.2	0.0026	<0.00108	<0.00109	<0.00134	<0.00138	<0.00114	<0.00108	<0.00126
toluene	490	0.69	<0.0108	<0.0109	<0.0134	<0.0138	<0.0114	<0.0108	<0.0126
ethylbenzene	5.8	0.78	<0.0108	<0.0109	<0.0134	<0.0138	<0.0114	<0.0108	<0.0126
total xylenes	58	9.9	<0.108	<0.109	<0.134	<0.138	<0.114	<0.108	<0.126
1,2,4-trimethylbenzene	30	0.0081	<0.00538	<0.00546	<0.00671	<0.00689	<0.00570	<0.00538	<0.00630
1,3,5-trimethylbenzene	27	0.0087	<0.00538	<0.00546	<0.00671	<0.00689	<0.00570	<0.00538	<0.00630
naphthalene	2	0.0038	0.00590	0.00839	0.00537	0.00531	0.00572	0.00454	0.00473
acenaphthene	360	0.55	<0.0343	<0.0345	<0.0386	<0.0392	<0.0353	<0.0342	<0.0373
anthracene	1800	5.8	<0.0343	<0.0345	<0.0386	<0.0392	<0.0353	<0.0342	<0.0373
benz(a)anthracene	1.1	0.011	<0.00623	<0.00627	<0.00702	<0.00713	<0.00642	<0.00623	<0.00678
benzo(a)pyrene	0.11	0.24	<0.0343	<0.0345	<0.0386	<0.0392	<0.0353	<0.0342	<0.0373
benzo(b)fluoranthene	1.1	0.3	<0.0343	<0.0345	<0.0386	<0.0392	<0.0353	<0.0342	<0.0373
benzo(k)fluoranthene	11	2.9	<0.0343	<0.0345	<0.0386	<0.0392	<0.0353	<0.0342	<0.0373
chrysene	110	9	<0.0343	<0.0345	<0.0386	<0.0392	<0.0353	<0.0342	<0.0373
dibenzo(a,h)anthracene	0.11	0.096	<0.0343	<0.0345	<0.0386	<0.0392	<0.0353	<0.0342	<0.0373
fluoranthene	240	8.9	<0.0343	<0.0345	<0.0386	<0.0392	<0.0353	<0.0342	<0.0373
fluorene	240	0.54	<0.0343	<0.0345	<0.0386	<0.0392	<0.0353	<0.0342	<0.0373
indeno(1,2,3-cd)pyrene	1.1	0.98	<0.0343	<0.0345	<0.0386	<0.0392	<0.0353	<0.0342	<0.0373
pyrene	180	1.3	<0.0343	<0.0345	<0.0386	<0.0392	<0.0353	<0.0342	<0.0373
1-methylnaphthalene	18	0.006	<0.00311	<0.00314	<0.00351	<0.00357	<0.00321	<0.00311	<0.00339
2-methylnaphthalene	24	0.019	<0.0125	<0.0125	<0.0140	<0.0143	<0.0128	<0.0125	<0.0136
Metals in Soils (mg/kg)									
arsenic	0.68	0.29	1.13	1.09	1.12	1.20	0.941	1.05	1.45
barium	15000	82	39.0	42.7	31.5	39.3	30.6	35.1	46.4
cadmium	71	0.38	<0.108	<0.105	<0.117	<0.119	<0.107	<0.104	<0.113
chromium (VI)	0.3	0.00067	<0.208	<0.209	<0.234	<0.238	<0.214	<0.208	<0.226
copper	3100	46	<10.8	<10.5	<11.7	<11.9	<10.7	<10.4	<11.3
lead	400	14	18.9	<10.5	<11.7	<11.9	<10.7	<10.4	<11.3
nickel	1500	26	<10.8	<10.5	<11.7	<11.9	<10.7	<10.4	<11.3
selenium	390	0.26	0.212	0.205	0.205	0.135	0.199	0.151	0.165
silver	390	0.8	<0.540	<0.523	<0.585	<0.594	<0.535	<0.519	<0.565
zinc	23000	370	<54.0	<52.3	<58.5	<59.4	<53.5	<51.9	<56.5

Notes

ECMC	Colorado Energy and Carbon Management Commission
RSSL	Residential Soil Screening Level
GWSSL	Protection of Groundwater Soil Screening Level
NA	not measured / not applicable
ppm	parts per million
TPH	total petroleum hydrocarbons
mg/kg	milligrams per kilogram
GRO	gasoline range organics
DRO	diesel range organics
ORO	oil range organics
EC	electrical conductivity
mmhos/cm	millimhos per centimeter
SAR	sodium adsorption ratio
mg/L	milligrams per liter
<	less than laboratory reporting limit
bold	result exceeds the applicable standard (after comparing to background, where applicable)
bold	result exceeds the applicable standard (after comparing to background, where applicable)
	reported detection limit is higher than standard

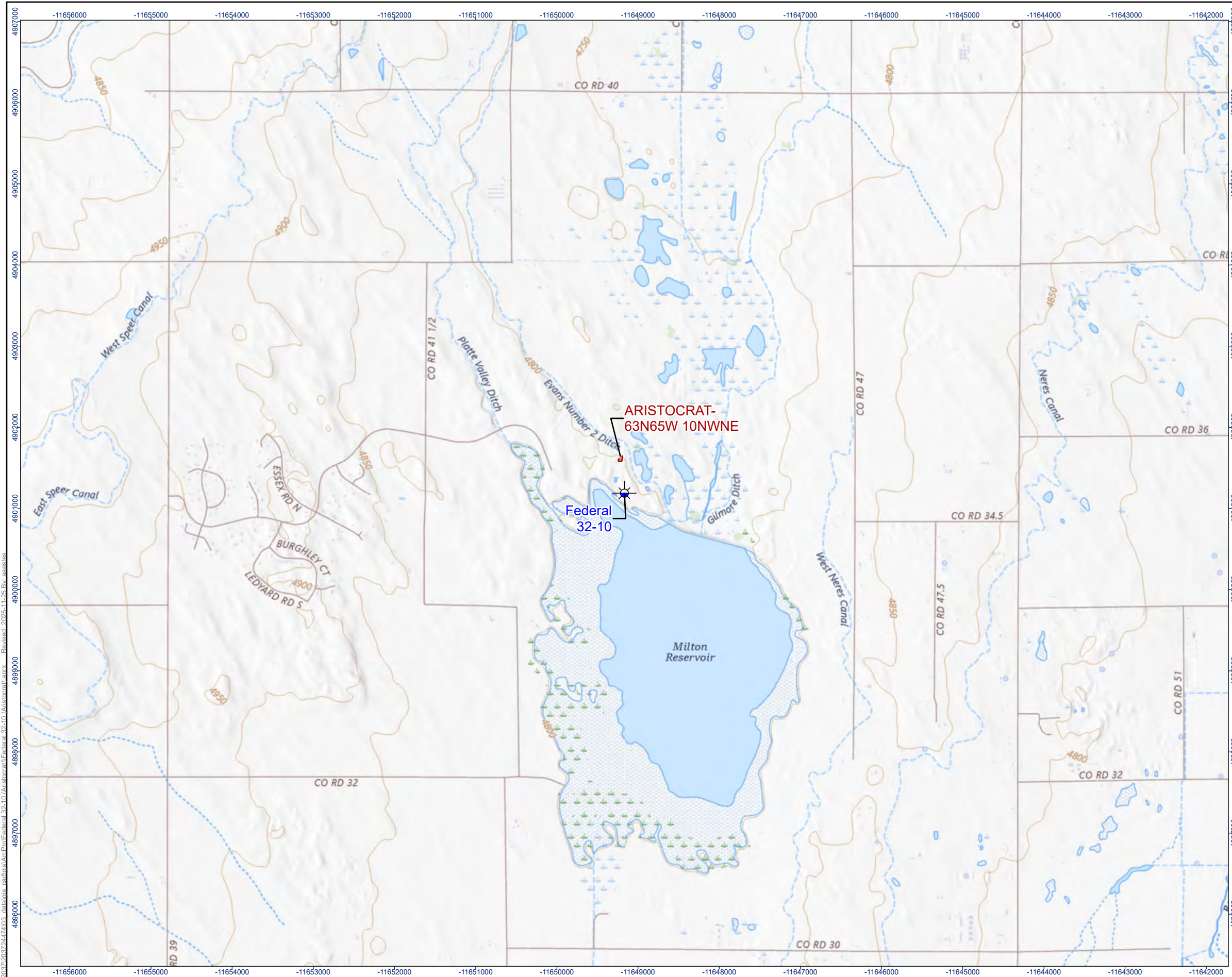
Table 3
Background Soil Sample Analytical Results
Crestone Peak Resources Operating LLC - 10633
Federal 32-10 FL1-B7
Remediation Project # 41913

Constituent of Concern	ECMC Table	ECMC Table 915-	Results				
	915-1 RSSL's	1 GWSSL's	BG1-B1@1	BG2-B1@1	BG3-B1@3	BG4-B1@3	BG5-B1@4
Sample Name	--		BG1-B1@1	BG2-B1@1	BG3-B1@3	BG4-B1@3	BG5-B1@4
Date	--		11/19/2025	11/19/2025	11/19/2025	11/19/2025	11/19/2025
PID (ppm)	--		2	3	3	2	1
Depth	--		1	1	3	3	4
Soil Suitability for Reclamation							
EC (mmhos/cm)	4		0.216	0.255	0.285	0.390	0.256
SAR (ratio)	6		1.82	1.42	1.58	1.81	1.69
pH (units)	6-8.3		6.94	6.64	7.13	7.08	7.37
boron (mg/L)	2		0.0263	0.0263	0.0326	0.0575	0.0523
Metals in Soils (mg/kg)							
arsenic	0.68	0.29	1.30	1.43	0.922	1.35	1.23
barium	15000	82	36.4	33.7	32.5	42.8	40.7
cadmium	71	0.38	<0.114	<0.104	<0.109	<0.106	<0.105
chromium (VI)	0.3	0.00067	<0.209	<0.208	<0.209	<0.212	<0.211
copper	3100	46	<11.4	<10.4	<10.9	<10.6	<10.5
lead	400	14	<11.4	<10.4	<10.9	<10.6	<10.5
nickel	1500	26	<11.4	<10.4	<10.9	<10.6	<10.5
selenium	390	0.26	0.207	0.203	<0.109	0.192	0.180
silver	390	0.8	<0.571	<0.521	<0.543	<0.529	<0.527
zinc	23000	370	<57.1	<52.1	<54.3	<52.9	<52.7

Notes

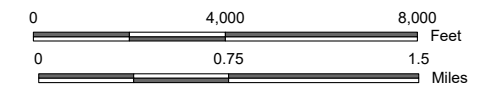
ECMC	Colorado Energy and Carbon Management Commission
RSSL	Residential Soil Screening Level
GWSSL	Protection of Groundwater Soil Screening Level
--	not measured / not applicable
ppm	parts per million
mg/kg	milligrams per kilogram
EC	electrical conductivity
mmhos/cm	millimhos per centimeter
SAR	sodium adsorption ratio
mg/L	milligrams per liter
<	less than laboratory reporting limit
	result exceeds the applicable standard
	result exceeds the applicable standard
	reported detection limit is higher than standard

Figures



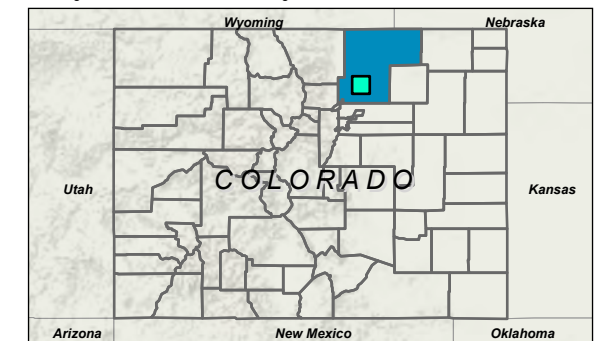
Legend

- Wellhead Location
- Tank Battery Location



(At original document size of 11x17) 1:48,000

- Notes**
1. Coordinate System: WGS 1984 Web Mercator Auxiliary Sphere
 2. Background: USGS 7.5 Minute Quadrangle



Project Location
 SWNE SEC 10 T3N R65W
 WELD COUNTY, COLORADO

Drawn by AE on 11/25/2025
 Reviewed by CR on 11/25/2025
 203724474

Client/Project
 CRESTONE PEAK RESOURCES OPERATING LLC –
 10633 Federal 32-10 FL1-B7
 (Remediation #41913)

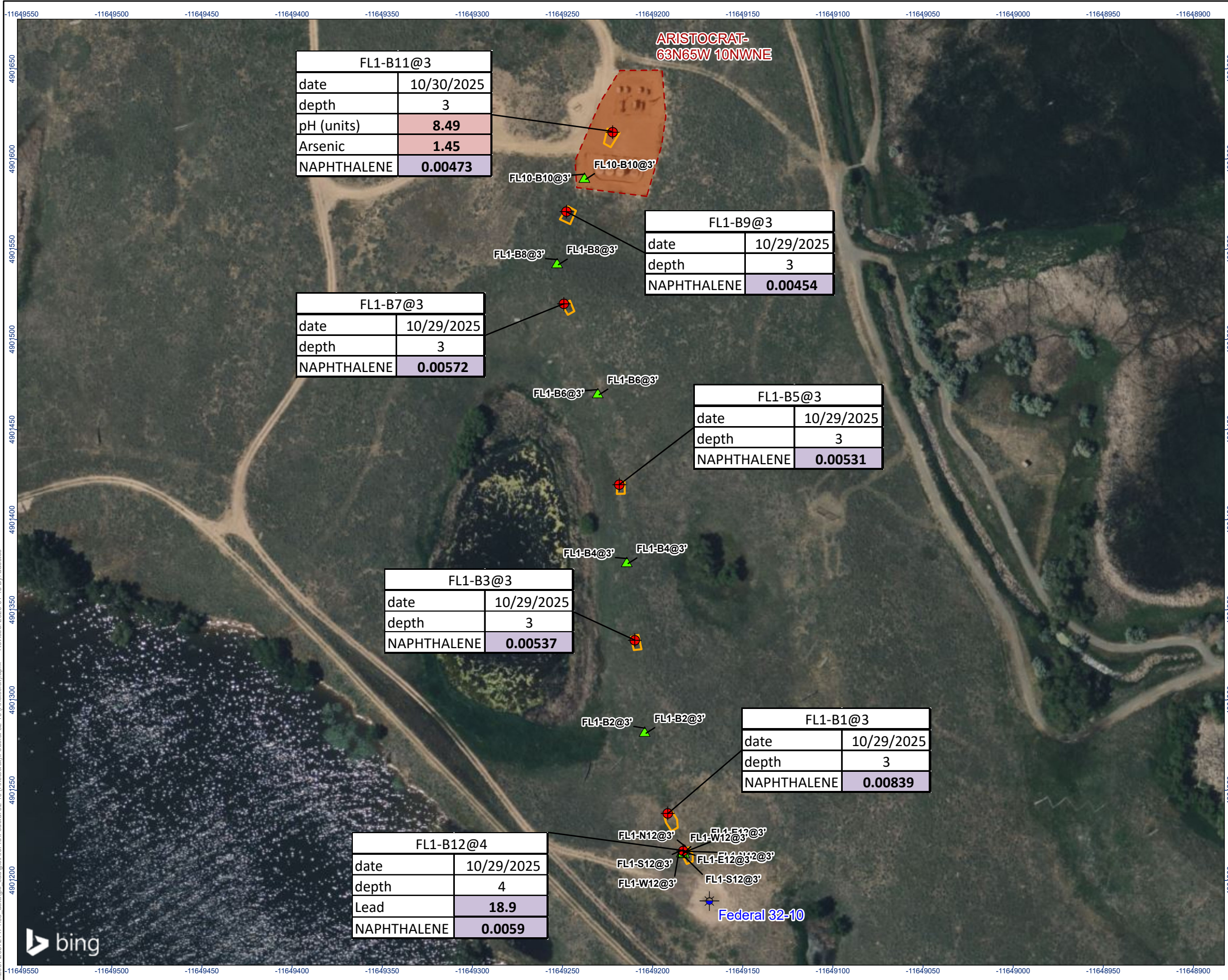
Figure No.

1

Title

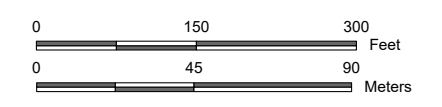
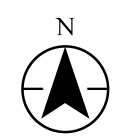
SITE LOCATION MAP

L:\2023\20230724\74003_data\03_data\03_data\Federal_32-10_Aristocrat\Aristocrat_32-10_Federal_32-10_Aristocrat.dwg - Revised: 2025-11-25 By: aaestias



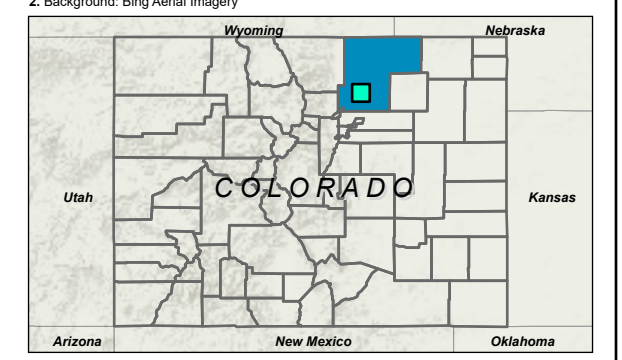
Legend

- Wellhead Location
- Field Screening Location Without Observable Impacts
- Soil Sample Location With Lab Exceedance(s)
- Approximate Excavation Extent
- Tank Battery Location



(At original document size of 11x17) 1:2,160

- Notes**
1. Coordinate System: WGS 1984 Web Mercator Auxiliary Sphere
 2. Background: Bing Aerial Imagery



Project Location
 NENE SEC 25 T7N R67W
 WELD COUNTY, COLORADO

Drawn by AE on 1/15/2026
 Reviewed by CR on 1/15/2026
 203724474

Client/Project
 CRESTONE PEAK RESOURCES OPERATING LLC – 10633
 Federal 32-10 FL1-B7
 (Remediation #41913)

Figure No.

2

Title
SOIL SAMPLE LOCATIONS

U:\203724474\GIS\ArcPro\Federal 32-10 (Aristocrat)\Federal 32-10 (Aristocrat)\aprx Revised: 2025-01-15 By: aaestes



Photographic Log

Sample ID: **FL1-B12@4**
Location:
40.242306, -
104.646391
Depth (ft): 4



Sample ID: **FL1-N12@3**
Location:
40.242316, -
104.646391
Depth (ft): 3



Sample ID: **FL1-E12@3**

Location:
40.242314, -
104.646384

Depth (ft): 3



Sample ID: **FL1-S12@3**

Location:
40.242301, -
104.646387

Depth (ft): 3



Sample ID: **FL1-W12@3**

Location:
40.242304, -
104.646399

Depth (ft): 3



Sample ID: **FL1-B12@3**

Location:
40.242316, -
104.646398

Depth (ft): 3



Sample ID: **FL1-B1@3**

Location:
40.242449, -
104.646468

Depth (ft): 3



Sample ID: **FL1-B2@3**

Location:
40.242763, -
104.646584

Depth (ft): 3



Sample ID: **FL1-B3@3**

Location:
40.243108, -
104.646633

Depth (ft): 3



Sample ID: **FL1-B4@3**

Location:
40.243408, -
104.646673

Depth (ft): 3



Sample ID: **FL1-B5@3**
Location:
40.243699, -104.64671
Depth (ft): 3



Sample ID: **FL1-B6@3**
Location:
40.24405, -104.646818
Depth (ft): 3



Sample ID: **FL1-B7@3**

Location:
40.244388, -
104.646986

Depth (ft): 3



Sample ID: **FL1-B8@3**

Location:
40.244545, -104.64702

Depth (ft): 3



Sample ID: **FL1-B9@3**

Location:
40.244737, -
104.646973

Depth (ft): 3



Sample ID: **FL10-B10@3**

Location:
40.244869, -104.646884

Depth (ft): 3



Sample ID: **FL1-B11@3**

Location:
40.24504, -104.646743

Depth (ft): 3

