

# Form 19 Data Package

Federal 32-10 FL1-B5  
Remediation #: 41913



Prepared for:  
CRESTONE PEAK RESOURCES OPERATING LLC - 10633

November 25, 2025

SWNE Sec. 10 T3S, R65W, 6th

Facility ID: 473092  
API #: 123-17137

## **Tables**

**Table 1**  
Soil Sample Locations  
CRESTONE PEAK RESOURCES OPERATING LLC  
Federal 32-10 FL1-B5  
Remediation Project #41913

Sample ID	Date	Depth	PID (ppm)	Latitude	Longitude	Accuracy Value (meters)	Photo (Y/N)	Lab (Y/N)
FL1-B12@4	10/29/2025	4	0	40.242306	-104.646391	0.31	Yes	Yes
FL1-N12@3	10/29/2025	3	0	40.242316	-104.646391	0.24	Yes	No
FL1-E12@3	10/29/2025	3	0	40.242314	-104.646384	0.29	Yes	No
FL1-S12@3	10/29/2025	3	0	40.242301	-104.646387	0.3	Yes	No
FL1-W12@3	10/29/2025	3	0	40.242304	-104.646399	0.29	Yes	No
FL1-B12@3	10/29/2025	3	0	40.242316	-104.646398	0.17	Yes	Yes
FL1-B1@3	10/29/2025	3	0	40.242449	-104.646468	0.18	Yes	Yes
FL1-B2@3	10/29/2025	3	0	40.242763	-104.646584	0.35	Yes	No
FL1-B3@3	10/29/2025	3	0	40.243108	-104.646633	0.28	Yes	Yes
FL1-B4@3	10/29/2025	3	0	40.243408	-104.646673	0.26	Yes	No
FL1-B5@3	10/29/2025	3	0	40.243699	-104.64671	0.34	Yes	Yes
FL1-B6@3	10/29/2025	3	0	40.24405	-104.646818	0.31	Yes	No
FL1-B7@3	10/29/2025	3	0	40.244388	-104.646986	0.36	Yes	Yes
FL1-B8@3	10/29/2025	3	0	40.244545	-104.64702	0.25	Yes	No
FL1-B9@3	10/29/2025	3	0	40.244737	-104.646973	0.18	Yes	Yes
FL10-B10@3	10/30/2025	3	0	40.244869	-104.646884	0.22	Yes	No
FL1-B11@3	10/30/2025	3	1	40.24504	-104.646743	0.25	Yes	Yes

**Notes**

PID                    photoionization detector  
ppm                    parts per million

**Table 2**  
**Soil Sample Analytical Results**  
**Crestone Peak Resources Operating LLC - 10633**  
**Federal 32-10 FL1-B5**  
**Remediation Project # 41913**

Constituent of Concern	ECMC Table 915	ECMC Table 915-	Results						
	1 RSSL's	1 GWSSL's	FL1-B12@4	FL1-B1@3	FL1-B3@3	FL1-B5@3	FL1-B7@3	FL1-B9@3	FL1-B11@3
Sample Name	--	--	FL1-B12@4	FL1-B1@3	FL1-B3@3	FL1-B5@3	FL1-B7@3	FL1-B9@3	FL1-B11@3
Date	--	--	10/29/2025	10/29/2025	10/29/2025	10/29/2025	10/29/2025	10/29/2025	10/30/2025
PID (ppm)	--	--	0.0	0.0	0.0	0.0	0.0	0.0	0.0
Depth (feet)	--	--	4	3	3	3	3	3	3
<b>TPH (mg/kg)</b>									
TPH - GRO	--	--	<2.69	<2.73	<3.35	<3.44	<2.85	<2.69	<3.15
TPH - DRO	--	--	<4.15	<4.18	<4.68	<4.76	<4.28	<4.15	<4.52
TPH - ORO	--	--	6.89	5.98	5.03	<4.76	<4.28	<4.15	<4.52
TPH - Total	500	--	<13.73	<12.89	<13.06	<12.96	<11.41	<10.99	<12.19
<b>Soil Suitability for Reclamation</b>									
EC (mmhos/cm)	4	--	0.22	0.11	0.118	0.115	0.0928	0.143	0.173
SAR (ratio)	6	--	0.605	0.214	0.982	0.183	0.951	0.256	0.162
pH (units)	6-8.3	--	8.06	6.81	6.92	7.69	7.25	7.30	<b>8.49</b>
boron (mg/L)	2	--	<0.100	<0.100	<0.100	<0.100	<0.100	<0.100	<0.100
<b>Organic Compounds in Soils (mg/kg)</b>									
benzene	1.2	0.0026	<0.00108	<0.00109	<0.00134	<0.00138	<0.00114	<0.00108	<0.00126
toluene	490	0.69	<0.0108	<0.0109	<0.0134	<0.0138	<0.0114	<0.0108	<0.0126
ethylbenzene	5.8	0.78	<0.0108	<0.0109	<0.0134	<0.0138	<0.0114	<0.0108	<0.0126
total xylenes	58	9.9	<0.108	<0.109	<0.134	<0.138	<0.114	<0.108	<0.126
1,2,4-trimethylbenzene	30	0.0081	<0.00538	<0.00546	<0.00671	<0.00689	<0.00570	<0.00538	<0.00630
1,3,5-trimethylbenzene	27	0.0087	<0.00538	<0.00546	<0.00671	<0.00689	<0.00570	<0.00538	<0.00630
naphthalene	2	0.0038	<b>0.00590</b>	<b>0.00839</b>	<b>0.00537</b>	<b>0.00531</b>	<b>0.00572</b>	<b>0.00454</b>	<b>0.00473</b>
acenaphthene	360	0.55	<0.0343	<0.0345	<0.0386	<0.0392	<0.0353	<0.0342	<0.0373
anthracene	1800	5.8	<0.0343	<0.0345	<0.0386	<0.0392	<0.0353	<0.0342	<0.0373
benz(a)anthracene	1.1	0.011	<0.00623	<0.00627	<0.00702	<0.00713	<0.00642	<0.00623	<0.00678
benzo(a)pyrene	0.11	0.24	<0.0343	<0.0345	<0.0386	<0.0392	<0.0353	<0.0342	<0.0373
benzo(b)fluoranthene	1.1	0.3	<0.0343	<0.0345	<0.0386	<0.0392	<0.0353	<0.0342	<0.0373
benzo(k)fluoranthene	11	2.9	<0.0343	<0.0345	<0.0386	<0.0392	<0.0353	<0.0342	<0.0373
chrysene	110	9	<0.0343	<0.0345	<0.0386	<0.0392	<0.0353	<0.0342	<0.0373
dibenzo(a,h)anthracene	0.11	0.096	<0.0343	<0.0345	<0.0386	<0.0392	<0.0353	<0.0342	<0.0373
fluoranthene	240	8.9	<0.0343	<0.0345	<0.0386	<0.0392	<0.0353	<0.0342	<0.0373
fluorene	240	0.54	<0.0343	<0.0345	<0.0386	<0.0392	<0.0353	<0.0342	<0.0373
indeno(1,2,3-cd)pyrene	1.1	0.98	<0.0343	<0.0345	<0.0386	<0.0392	<0.0353	<0.0342	<0.0373
pyrene	180	1.3	<0.0343	<0.0345	<0.0386	<0.0392	<0.0353	<0.0342	<0.0373
1-methylnaphthalene	18	0.006	<0.00311	<0.00314	<0.00351	<0.00357	<0.00321	<0.00311	<0.00339
2-methylnaphthalene	24	0.019	<0.0125	<0.0125	<0.0140	<0.0143	<0.0128	<0.0125	<0.0136
<b>Metals in Soils (mg/kg)</b>									
arsenic	0.68	0.29	1.13	1.09	1.12	1.20	0.941	1.05	<b>1.45</b>
barium	15000	82	39.0	42.7	31.5	39.3	30.6	35.1	46.4
cadmium	71	0.38	<0.108	<0.105	<0.117	<0.119	<0.107	<0.104	<0.113
chromium (VI)	0.3	0.00067	<0.208	<0.209	<0.234	<0.238	<0.214	<0.208	<0.226
copper	3100	46	<10.8	<10.5	<11.7	<11.9	<10.7	<10.4	<11.3
lead	400	14	<b>18.9</b>	<10.5	<11.7	<11.9	<10.7	<10.4	<11.3
nickel	1500	26	<10.8	<10.5	<11.7	<11.9	<10.7	<10.4	<11.3
selenium	390	0.26	0.212	0.205	0.205	0.135	0.199	0.151	0.165
silver	390	0.8	<0.540	<0.523	<0.585	<0.594	<0.535	<0.519	<0.565
zinc	23000	370	<54.0	<52.3	<58.5	<59.4	<53.5	<51.9	<56.5

**Notes**

ECMC	Colorado Energy and Carbon Management Commission
RSSL	Residential Soil Screening Level
GWSSL	Protection of Groundwater Soil Screening Level
NA	not measured / not applicable
ppm	parts per million
TPH	total petroleum hydrocarbons
mg/kg	milligrams per kilogram
GRO	gasoline range organics
DRO	diesel range organics
ORO	oil range organics
EC	electrical conductivity
mmhos/cm	millimhos per centimeter
SAR	sodium adsorption ratio
mg/L	milligrams per liter
<	less than laboratory reporting limit
<b>bold</b>	result exceeds the applicable standard (after comparing to background, where applicable)
<b>bold</b>	result exceeds the applicable standard (after comparing to background, where applicable)
	reported detection limit is higher than standard

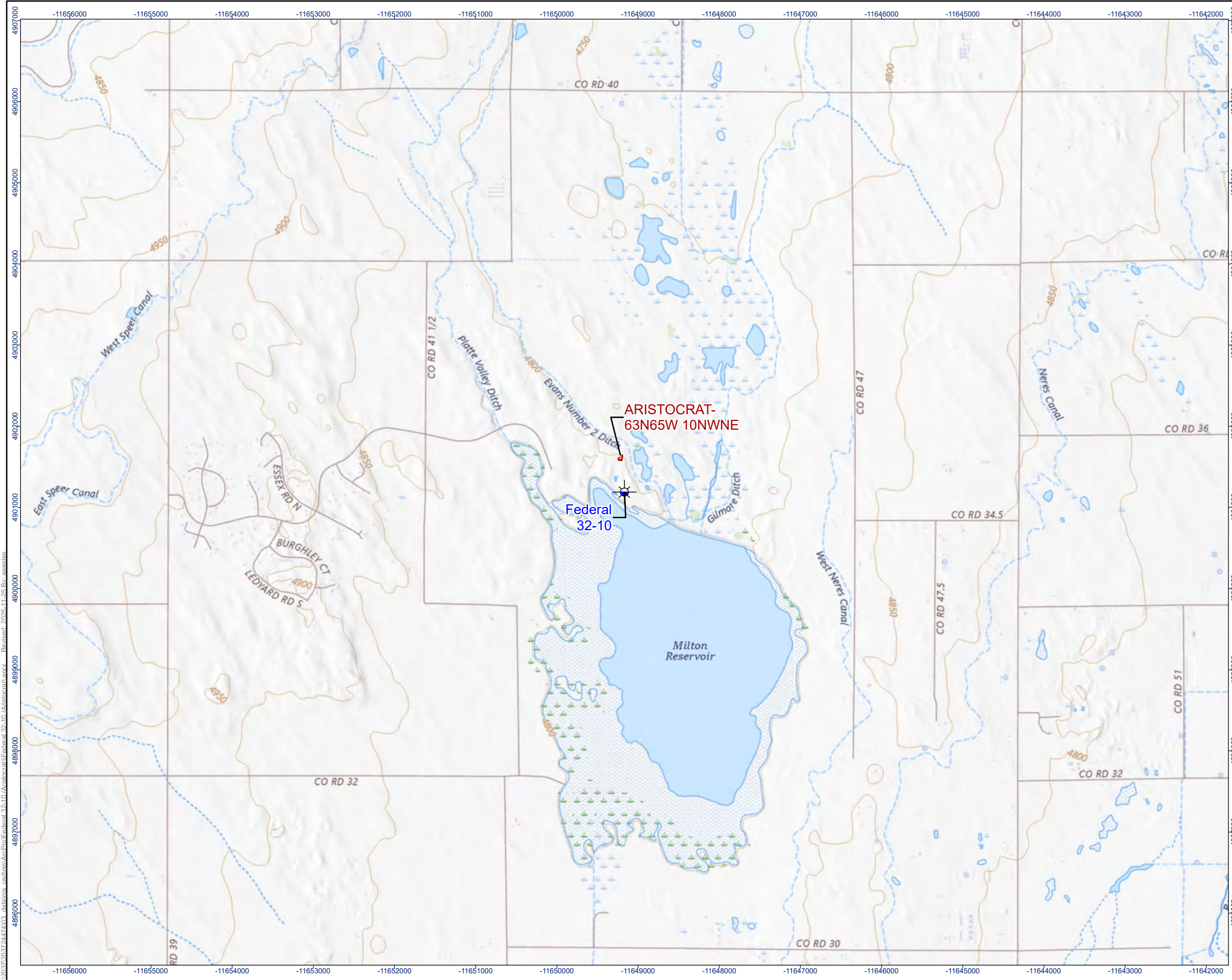
**Table 3**  
**Background Soil Sample Analytical Results**  
**Crestone Peak Resources Operating LLC - 10633**  
**Federal 32-10 FL1-B5**  
**Remediation Project # 41913**

Constituent of Concern	ECMC Table	ECMC Table 915-	Results				
	915-1 RSSL's	1 GWSSL's	BG1-B1@1	BG2-B1@1	BG3-B1@3	BG4-B1@3	BG5-B1@4
Sample Name	--		BG1-B1@1	BG2-B1@1	BG3-B1@3	BG4-B1@3	BG5-B1@4
Date	--		11/19/2025	11/19/2025	11/19/2025	11/19/2025	11/19/2025
PID (ppm)	--		2	3	3	2	1
Depth	--		1	1	3	3	4
<b>Soil Suitability for Reclamation</b>							
EC (mmhos/cm)	4		0.216	0.255	0.285	0.390	0.256
SAR (ratio)	6		1.82	1.42	1.58	1.81	1.69
pH (units)	6-8.3		6.94	6.64	7.13	7.08	7.37
boron (mg/L)	2		0.0263	0.0263	0.0326	0.0575	0.0523
<b>Metals in Soils (mg/kg)</b>							
arsenic	0.68	0.29	1.30	1.43	0.922	1.35	1.23
barium	15000	82	36.4	33.7	32.5	42.8	40.7
cadmium	71	0.38	<0.114	<0.104	<0.109	<0.106	<0.105
chromium (VI)	0.3	0.00067	<0.209	<0.208	<0.209	<0.212	<0.211
copper	3100	46	<11.4	<10.4	<10.9	<10.6	<10.5
lead	400	14	<11.4	<10.4	<10.9	<10.6	<10.5
nickel	1500	26	<11.4	<10.4	<10.9	<10.6	<10.5
selenium	390	0.26	0.207	0.203	<0.109	0.192	0.180
silver	390	0.8	<0.571	<0.521	<0.543	<0.529	<0.527
zinc	23000	370	<57.1	<52.1	<54.3	<52.9	<52.7



**Notes**

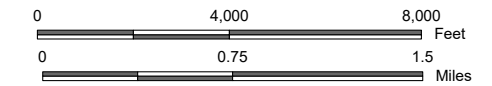
ECMC	Colorado Energy and Carbon Management Commission
RSSL	Residential Soil Screening Level
GWSSL	Protection of Groundwater Soil Screening Level
--	not measured / not applicable
ppm	parts per million
mg/kg	milligrams per kilogram
EC	electrical conductivity
mmhos/cm	millimhos per centimeter
SAR	sodium adsorption ratio
mg/L	milligrams per liter
<	less than laboratory reporting limit
	result exceeds the applicable standard
	result exceeds the applicable standard
	reported detection limit is higher than standard

## Figures



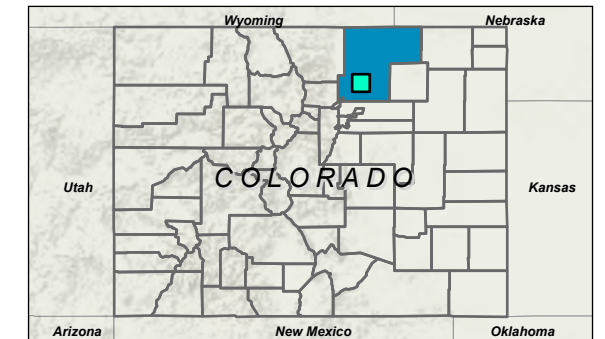
**Legend**

-  Wellhead Location
-  Tank Battery Location



(At original document size of 11x17) 1:48,000

- Notes**
1. Coordinate System: WGS 1984 Web Mercator Auxiliary Sphere
  2. Background: USGS 7.5 Minute Quadrangle



**Project Location**  
 SWNE SEC 10 T3N R65W  
 WELD COUNTY, COLORADO

Drawn by AE on 11/25/2025  
 Reviewed by CR on 11/25/2025  
 203724474

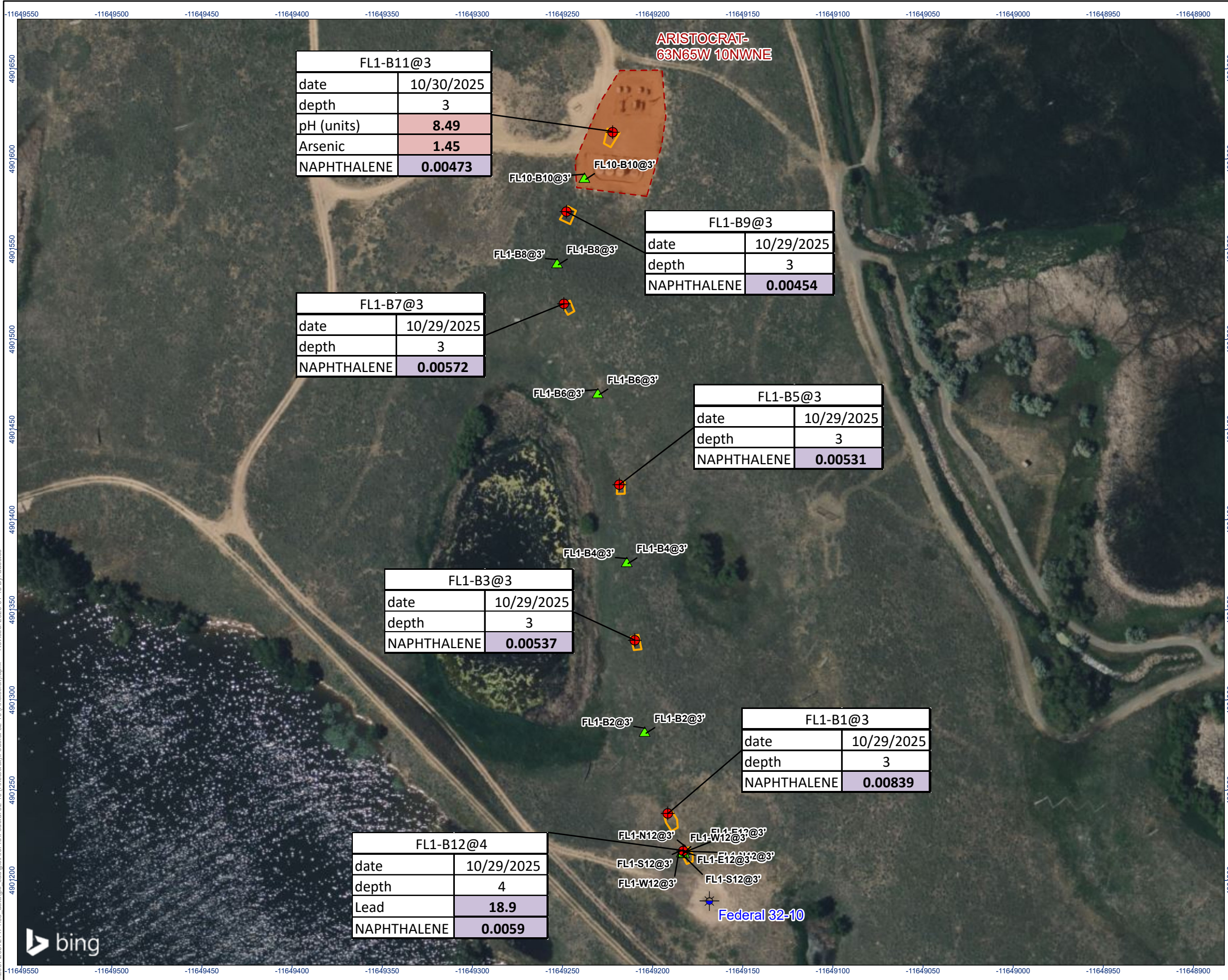
**Client/Project**  
 CRESTONE PEAK RESOURCES OPERATING LLC – 10633  
 Federal 32-10 FL1-B5  
 (Remediation #41913)

**Figure No.**

**1**

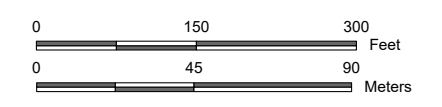
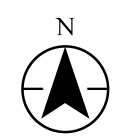
**Title**  
**SITE LOCATION MAP**

L:\2023\20230724\2403\_data\gis\_cad\gis\Federal\_32-10\_Aristocrat\Aristocrat\_32-10\_Federal\_32-10\_Aristocrat.aprx\_ Revised: 2025-11-25 By: aaestias



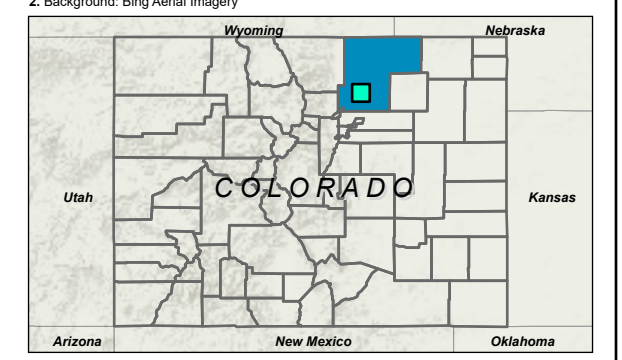
**Legend**

- Wellhead Location
- Field Screening Location Without Observable Impacts
- Soil Sample Location With Lab Exceedance(s)
- Approximate Excavation Extent
- Tank Battery Location



(At original document size of 11x17) 1:2,160

- Notes**
1. Coordinate System: WGS 1984 Web Mercator Auxiliary Sphere
  2. Background: Bing Aerial Imagery



**Project Location**  
 NENE SEC 25 T7N R67W  
 WELD COUNTY, COLORADO

Drawn by AE on 1/15/2026  
 Reviewed by CR on 1/15/2026  
 203724474

**Client/Project**  
 CRESTONE PEAK RESOURCES OPERATING LLC – 10633  
 Federal 32-10 FL1-B5  
 (Remediation #41913)

**Figure No.**

**2**

**Title**  
**SOIL SAMPLE LOCATIONS**

U:\203724474\GIS\ArcPro\Federal 32-10 (Aristocrat)\Federal 32-10 (Aristocrat)\aprx Revised: 2025-01-15 By: aaestes



# **Photographic Log**

Sample ID: **FL1-B12@4**

Location:  
40.242306, -  
104.646391

Depth (ft): 4



Sample ID: **FL1-N12@3**

Location:  
40.242316, -  
104.646391

Depth (ft): 3



Sample ID: **FL1-E12@3**

Location:  
40.242314, -  
104.646384

Depth (ft): 3



Sample ID: **FL1-S12@3**

Location:  
40.242301, -  
104.646387

Depth (ft): 3



Sample ID: **FL1-W12@3**

Location:  
40.242304, -  
104.646399

Depth (ft): 3



Sample ID: **FL1-B12@3**

Location:  
40.242316, -  
104.646398

Depth (ft): 3



Sample ID: **FL1-B1@3**

Location:  
40.242449, -  
104.646468

Depth (ft): 3



Sample ID: **FL1-B2@3**

Location:  
40.242763, -  
104.646584

Depth (ft): 3



Sample ID: **FL1-B3@3**

Location:  
40.243108, -  
104.646633

Depth (ft): 3



Sample ID: **FL1-B4@3**

Location:  
40.243408, -  
104.646673

Depth (ft): 3



Sample ID: **FL1-B5@3**  
Location:  
40.243699, -104.64671  
Depth (ft): 3



Sample ID: **FL1-B6@3**  
Location:  
40.24405, -104.646818  
Depth (ft): 3



Sample ID: **FL1-B7@3**

Location:  
40.244388, -  
104.646986

Depth (ft): 3



Sample ID: **FL1-B8@3**

Location:  
40.244545, -104.64702

Depth (ft): 3



Sample ID: **FL1-B9@3**

Location:  
40.244737, -  
104.646973

Depth (ft): 3



Sample ID: **FL10-B10@3**

Location:  
40.244869, -104.646884

Depth (ft): 3



Sample ID: **FL1-B11@3**

Location:  
40.24504, -104.646743

Depth (ft): 3

