



**Multi Sensor 40 Arm Caliper
Magnetic Wall Thickness
Gamma Ray CCL
Log**

Company TEP Rocky Mountain LLC
Well AP #43-1-696
Field Parachute
County Garfield
State Colorado

Company TEP Rocky Mountain LLC
Well AP #43-1-696
Field Parachute
County Garfield State Colorado

Location: API #: 05-045-18424
SEC 1 TWP 6S RGE 96W
Permanent Datum Ground Level Elevation 8419
Log Measured From Kelly Bushing
Drilling Measured From Kelly Bushing
Other Services
Elevation
K.B. 8437'
D.F.
G.L. 8419'

| | | | |
|------------------------|----------------|---------------------|------------|
| Date | 15-DEC-2025 | Run Number | One |
| Depth Driller | 11620' | Depth Logger | 5016' |
| Bottom Logged Interval | 5016' | Top Log Interval | 2980' |
| Open Hole Size | 7.875" | Type Fluid | Water |
| Density / Viscosity | 8.34 Lb/Gal | Max. Recorded Temp. | 147°F |
| Estimated Cement Top | --- | Time Well Ready | ROA |
| Time Logger on Bottom | 12:45 | Equipment Number | 8102 |
| Location | Grand Junction | Recorded By | P. Edwards |
| Witnessed By | D. Winkler | | |

| Borehole Record | | | | Tubing Record | | | |
|-----------------|-----|------|----|---------------|--------|------|----|
| Run Number | Bit | From | To | Size | Weight | From | To |
| | | | | | | | |
| | | | | | | | |
| | | | | | | | |

| | | | | |
|-------------------|--------|--------|---------|--------|
| Casing Record | Size | Mgt/Ft | Top | Bottom |
| Surface String | 9.625" | 36# | Surface | 3525' |
| Prot. String | | | | |
| Production String | 4.5" | 11.6 | Surface | 11623' |
| Liner | | | | |

<<< Fold Here >>>

All interpretations are opinions based on inferences from electrical or other measurements and we cannot and do not guarantee the accuracy or correctness of any interpretation, and we shall not, except in the case of gross or willful negligence on our part, be liable or responsible for any loss, costs, damages, or expenses incurred or sustained by anyone resulting from any interpretation made by any of our officers, agents or employees. These interpretations are also subject to our general terms and conditions set out in our current Price Schedule.

Comments


Log ran as per customer request
Log correlated to Halliburton Cement Bond log dated 10-04-08
Thank you for choosing The Wireline Group!

API Casing Dimensions

*LOG columns indicate the Wall Thickness values that may be displayed on the Caliper Log in NEW casing due only to A.P.I. Dimensional Tolerances

| Casing O.D. | | WGT | Wall Thickness | | Casing I.D. | | | LOG* | |
|-------------|-----|-------|----------------|-----|-------------|-----|-----|------|-----|
| NOM | MAX | LB/FT | NOM | MIN | NOM | MAX | MIN | MAX | MIN |

| NOM. | MAX. | MIN. | LB/F 1 | NOM. | MIN. | NOM. | MAX. | MIN. | MAX. | MIN. |
|--------|--------|--------|--------|-------|-------|--------|--------|--------|------|------|
| 4.500 | 4.534 | 4.466 | 9.50 | .205 | .179 | 4.090 | 4.175 | 4.056 | .222 | .163 |
| | | | 10.50 | .224 | .196 | 4.052 | 4.142 | 4.018 | .241 | .179 |
| | | | 11.60 | .250 | .219 | 4.000 | 4.096 | 3.966 | .267 | .202 |
| | | | 13.50 | .290 | .254 | 3.920 | 4.026 | 3.886 | .307 | .237 |
| 5.000 | 5.038 | 4.963 | 15.10 | .337 | .295 | 3.826 | 3.944 | 3.792 | .354 | .278 |
| | | | 11.50 | .220 | .193 | 4.560 | 4.653 | 4.523 | .239 | .174 |
| | | | 13.00 | .253 | .221 | 4.494 | 4.595 | 4.457 | .272 | .203 |
| | | | 15.00 | .295 | .259 | 4.408 | 4.520 | 4.371 | .315 | .240 |
| 5.500 | 5.541 | 5.459 | 18.00 | .362 | .317 | 4.276 | 4.404 | 4.239 | .318 | .298 |
| | | | 23.20 | .493 | .431 | 4.014 | 4.175 | 3.977 | .512 | .413 |
| | | | 14.00 | .244 | .214 | 5.012 | 5.114 | 4.971 | .265 | .193 |
| | | | 15.50 | .275 | .241 | 4.950 | 5.060 | 4.909 | .296 | .220 |
| 6.625 | 6.675 | 6.575 | 17.00 | .304 | .266 | 4.892 | 5.009 | 4.851 | .325 | .245 |
| | | | 20.00 | .361 | .316 | 4.778 | 4.910 | 4.737 | .383 | .295 |
| | | | 23.00 | .415 | .363 | 4.670 | 4.815 | 4.629 | .436 | .343 |
| | | | 20.00 | .288 | .252 | 6.049 | 6.171 | 5.999 | .313 | .227 |
| 7.000 | 7.053 | 6.948 | 24.00 | .352 | .308 | 5.921 | 6.059 | 5.871 | .377 | .283 |
| | | | 28.00 | .417 | .365 | 5.791 | 5.945 | 5.741 | .442 | .340 |
| | | | 32.00 | .475 | .416 | 5.675 | 5.843 | 5.625 | .500 | .391 |
| | | | 17.00 | .231 | .202 | 6.538 | 6.648 | 6.486 | .257 | .176 |
| 7.625 | 7.682 | 7.568 | 20.00 | .272 | .238 | 6.456 | 6.577 | 6.404 | .298 | .212 |
| | | | 23.00 | .317 | .277 | 6.366 | 6.498 | 6.314 | .343 | .251 |
| | | | 26.00 | .362 | .317 | 6.276 | 6.419 | 6.224 | .388 | .291 |
| | | | 29.00 | .408 | .357 | 6.184 | 6.339 | 6.132 | .434 | .331 |
| | | | 32.00 | .453 | .396 | 6.094 | 6.260 | 6.042 | .479 | .370 |
| | | | 35.00 | .498 | .436 | 6.004 | 6.181 | 5.952 | .524 | .410 |
| 8.625 | 8.690 | 8.560 | 38.00 | .540 | .473 | 5.920 | 6.108 | 5.868 | .566 | .446 |
| | | | 24.00 | .300 | .263 | 7.025 | 7.157 | 6.968 | .329 | .234 |
| | | | 26.40 | .328 | .287 | 6.969 | 7.108 | 6.912 | .357 | .258 |
| | | | 29.70 | .375 | .328 | 6.875 | 7.026 | 6.818 | .404 | .300 |
| | | | 33.70 | .430 | .376 | 6.765 | 6.930 | 6.708 | .459 | .348 |
| 9.625 | 9.697 | 9.553 | 39.00 | .500 | .438 | 6.625 | 6.807 | 6.568 | .529 | .409 |
| | | | 45.30 | .595 | .521 | 6.435 | 6.641 | 6.378 | .624 | .492 |
| | | | 24.00 | .264 | .231 | 8.097 | 8.228 | 8.032 | .296 | .199 |
| | | | 28.00 | .304 | .266 | 8.017 | 8.158 | 7.952 | .336 | .234 |
| | | | 32.00 | .352 | .308 | 7.921 | 8.074 | 7.856 | .384 | .276 |
| | | | 36.00 | .400 | .350 | 7.825 | 7.990 | 7.760 | .432 | .318 |
| | | | 40.00 | .450 | .394 | 7.725 | 7.902 | 7.660 | .482 | .361 |
| 10.750 | 10.831 | 10.669 | 44.00 | .500 | .438 | 7.625 | 7.815 | 7.560 | .532 | .405 |
| | | | 49.00 | .557 | .487 | 7.511 | 7.715 | 7.446 | .589 | .455 |
| | | | 32.30 | .312 | .273 | 9.001 | 9.151 | 8.929 | .348 | .237 |
| | | | 36.00 | .352 | .308 | 8.921 | 9.081 | 8.849 | .388 | .272 |
| | | | 40.00 | .395 | .346 | 8.835 | 9.006 | 8.763 | .431 | .310 |
| | | | 43.50 | .435 | .381 | 8.755 | 8.936 | 8.683 | .471 | .345 |
| | | | 47.00 | .472 | .413 | 8.681 | 8.871 | 8.609 | .508 | .377 |
| 53.50 | .545 | .477 | 8.535 | 8.743 | 8.463 | .581 | .441 | | | |
| 10.750 | 10.831 | 10.669 | 58.40 | .595 | .521 | 8.435 | 8.656 | 8.363 | .631 | .485 |
| | | | 61.10 | .625 | .547 | 8.375 | 8.603 | 8.303 | .661 | .511 |
| | | | 32.75 | .279 | .244 | 10.192 | 10.342 | 10.111 | .319 | .204 |
| | | | 40.50 | .350 | .306 | 10.050 | 10.218 | 9.969 | .390 | .266 |
| | | | 45.50 | .400 | .350 | 9.950 | 10.131 | 9.869 | .440 | .310 |
| | | | 51.00 | .450 | .394 | 9.850 | 10.043 | 9.769 | .490 | .353 |
| 55.50 | .495 | .433 | 9.760 | 9.964 | 9.679 | .535 | .393 | | | |
| 60.70 | .545 | .477 | 9.660 | 9.877 | 9.579 | .585 | .437 | | | |
| 65.70 | .595 | .521 | 9.560 | 9.789 | 9.479 | .635 | .480 | | | |
| 71.10 | .650 | .569 | 9.450 | 9.693 | 9.369 | .690 | .528 | | | |

| | | |
|--|---------------------------|------------------------|
|  | PIPE TALLY SUMMARY | |
| | Company | TEP Rocky Mountain LLC |
| | Well | AP #43-1-696 |
| | Field | Parachute |
| County | Garfield | Colorado |

| JOINT CLASSIFICATION | | | Comments |
|----------------------|--------|----------|--|
| Range | Symbol | # Joints | |
| 0% to 10% | A | 55 | Thank you for choosing The Wireline Group! |
| 10% to 20% | B | 0 | |
| 20% to 30% | C | 0 | |
| 30% to 40% | D | 0 | |
| 40% to 50% | E | 0 | |

| Joint | Grade | Depth | Length | Max Pen % | Rem Wall | Pen Dep | Comment |
|-------|-------|--------|--------|-----------|----------|---------|---------|
| 1 | A | 2999.5 | 42.9 | 4% | 0.241 | 3039.8 | |
| 2 | A | 3042.4 | 41.9 | 2% | 0.245 | 3044.7 | |
| 3 | A | 3084.2 | 42.6 | 4% | 0.239 | 3124.1 | |
| 4 | A | 3126.9 | 42.8 | 3% | 0.243 | 3167.5 | |
| 5 | A | 3169.7 | 42.4 | 3% | 0.241 | 3208.0 | |
| 6 | A | 3212.1 | 41.1 | 4% | 0.240 | 3250.7 | |
| 7 | A | 3253.1 | 43.2 | 3% | 0.242 | 3290.7 | |
| 8 | A | 3296.3 | 42.3 | 2% | 0.244 | 3304.0 | |
| 9 | A | 3338.6 | 43.0 | 2% | 0.244 | 3376.2 | |
| 10 | A | 3381.6 | 43.8 | 4% | 0.241 | 3419.7 | |
| 11 | A | 3425.3 | 40.7 | 7% | 0.233 | 3459.9 | |
| 12 | A | 3466.1 | 41.5 | 2% | 0.244 | 3468.0 | |
| 13 | A | 3507.5 | 42.7 | 4% | 0.240 | 3509.2 | |
| 14 | A | 3550.2 | 42.7 | 3% | 0.242 | 3588.2 | |
| 15 | A | 3592.9 | 38.8 | 3% | 0.242 | 3601.7 | |
| 16 | A | 3631.7 | 43.7 | 3% | 0.242 | 3637.8 | |
| 17 | A | 3675.4 | 42.6 | 4% | 0.241 | 3698.4 | |
| 18 | A | 3718.0 | 42.7 | 3% | 0.243 | 3756.2 | |
| 19 | A | 3760.8 | 42.8 | 4% | 0.239 | 3788.0 | |
| 20 | A | 3803.6 | 43.3 | 4% | 0.240 | 3840.9 | |
| 21 | A | 3846.8 | 42.5 | 4% | 0.241 | 3887.4 | |
| 22 | A | 3889.3 | 42.5 | 3% | 0.241 | 3922.3 | |
| 23 | A | 3931.8 | 42.7 | 4% | 0.241 | 3953.9 | |
| 24 | A | 3974.5 | 42.9 | 6% | 0.236 | 4013.8 | |
| 25 | A | 4017.3 | 41.6 | 4% | 0.241 | 4020.6 | |
| 26 | A | 4059.0 | 44.0 | 4% | 0.240 | 4070.5 | |
| 27 | A | 4103.0 | 43.0 | 3% | 0.241 | 4107.0 | |
| 28 | A | 4146.0 | 42.6 | 5% | 0.238 | 4147.6 | |
| 29 | A | 4188.6 | 43.3 | 5% | 0.238 | 4227.1 | |
| 30 | A | 4232.0 | 42.5 | 4% | 0.239 | 4271.2 | |

Sheet: 1 of 2

15-DEC-2025



PIPE TALLY SUMMARY

Company TEP Rocky Mountain LLC
 Well AP #43-1-696
 Field Parachute
 County Garfield Colorado

JOINT CLASSIFICATION

Comments

| Range | Symbol | # Joints |
|-------------|--------|----------|
| 0% to 10% | A | 55 |
| 10% to 20% | B | 0 |
| 20% to 30% | C | 0 |
| 30% to 40% | D | 0 |
| 40% to 50% | E | 0 |
| 50% to 100% | | 0 |

Thank you for choosing The Wireline Group!

| Joint | Grade | Depth | Length | Max Pen % | Rem Wall | Pen Dep | Comment |
|-------|-------|--------|--------|-----------|----------|---------|---------|
| 31 | A | 4274.5 | 44.0 | 2% | 0.246 | 4278.6 | |
| 32 | A | 4318.5 | 28.1 | 6% | 0.236 | 4324.3 | |
| 33 | A | 4346.6 | 28.7 | 5% | 0.238 | 4372.3 | |
| 34 | A | 4375.3 | 33.3 | 6% | 0.236 | 4407.0 | |
| 35 | A | 4408.6 | 28.2 | 5% | 0.237 | 4431.1 | |
| 36 | A | 4436.8 | 34.8 | 5% | 0.237 | 4445.2 | |
| 37 | A | 4471.6 | 28.4 | 6% | 0.236 | 4485.6 | |
| 38 | A | 4500.0 | 28.4 | 5% | 0.237 | 4526.7 | |
| 39 | A | 4528.4 | 28.5 | 4% | 0.239 | 4549.7 | |
| 40 | A | 4556.9 | 28.6 | 6% | 0.236 | 4572.9 | |
| 41 | A | 4585.5 | 28.7 | 5% | 0.237 | 4591.3 | |
| 42 | A | 4614.2 | 27.8 | 7% | 0.233 | 4634.3 | |
| 43 | A | 4642.0 | 28.3 | 5% | 0.237 | 4646.8 | |
| 44 | A | 4670.2 | 28.8 | 6% | 0.235 | 4683.2 | |
| 45 | A | 4699.0 | 27.9 | 6% | 0.234 | 4713.6 | |
| 46 | A | 4726.9 | 28.7 | 5% | 0.239 | 4745.5 | |
| 47 | A | 4755.6 | 28.7 | 4% | 0.241 | 4764.7 | |

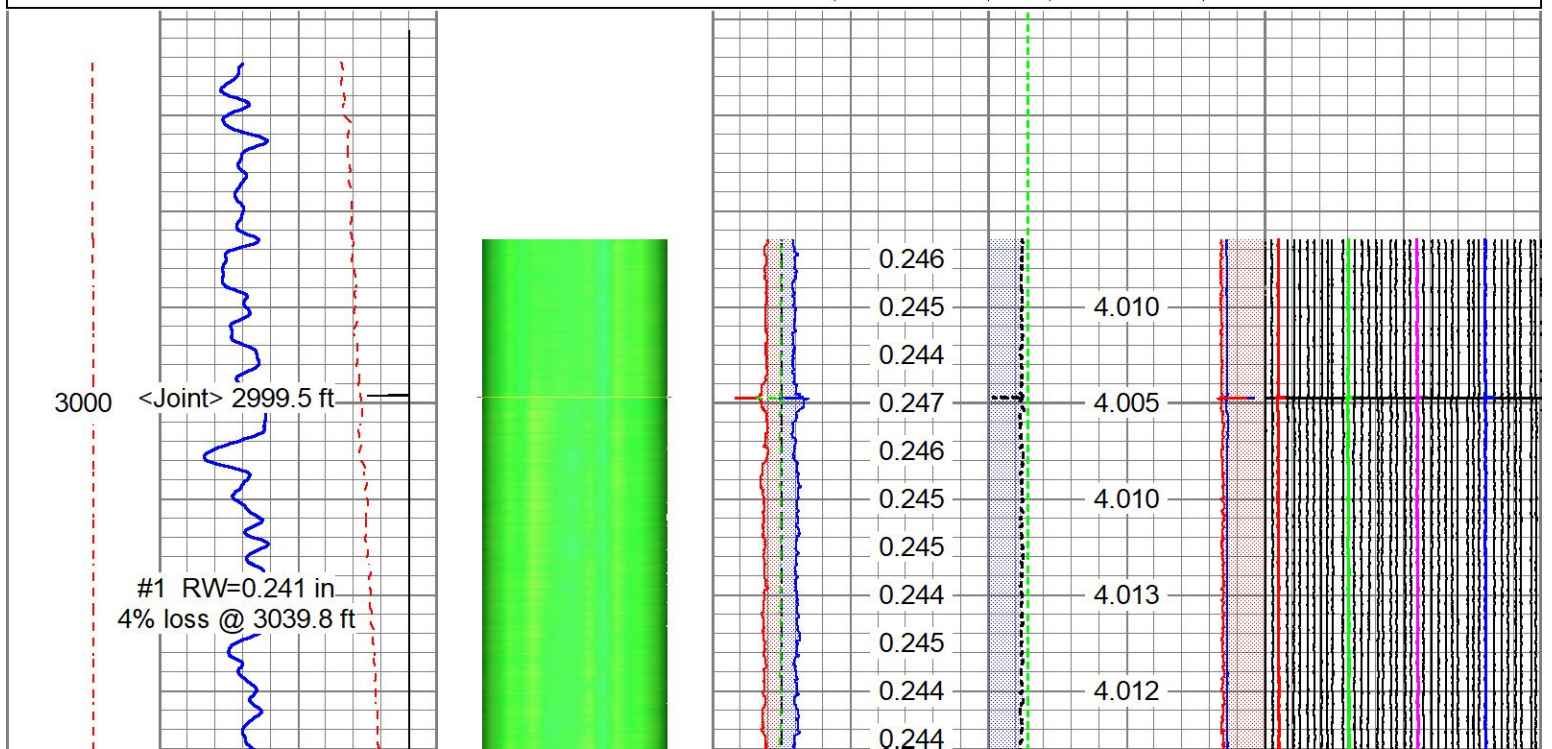
| | | | | | | | |
|----|---|--------|------|----|-------|--------|-------|
| 48 | A | 4784.3 | 28.1 | 5% | 0.237 | 4809.1 | |
| 49 | A | 4812.4 | 29.1 | 3% | 0.243 | 4816.1 | |
| 50 | A | 4841.4 | 28.0 | 4% | 0.240 | 4858.1 | |
| 51 | A | 4869.4 | 29.0 | 3% | 0.241 | 4896.9 | |
| 52 | A | 4898.4 | 28.3 | 4% | 0.240 | 4902.7 | |
| 53 | A | 4926.7 | 28.3 | 4% | 0.241 | 4937.6 | |
| 54 | A | 4954.9 | 29.0 | 3% | 0.243 | 4962.4 | |
| 55 | A | 4984.0 | 25.1 | 2% | 0.244 | 4987.9 | |
| 56 | | 5009.1 | 0.0 | | 0.000 | 0.0 | 0 0 0 |

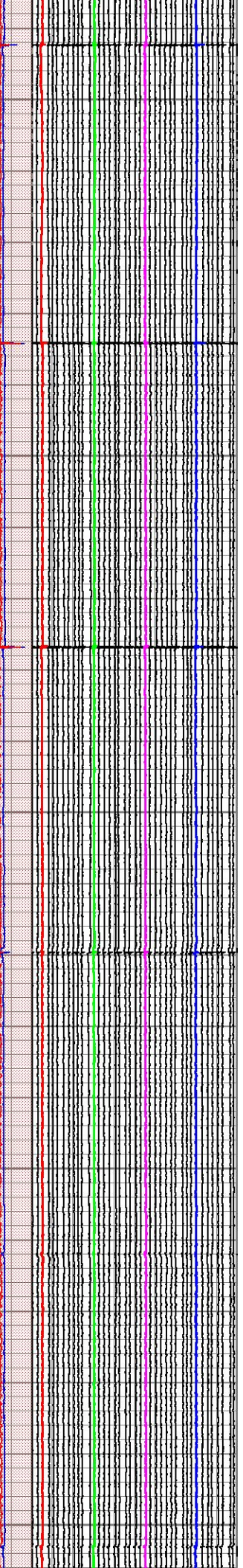
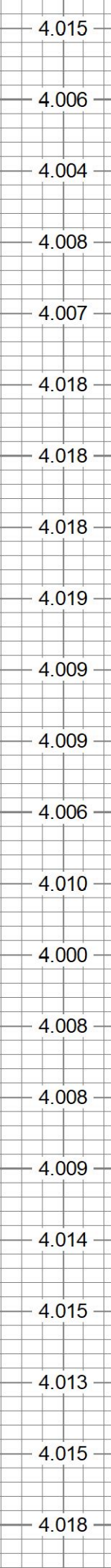
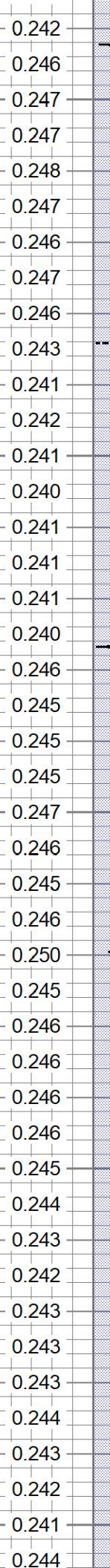
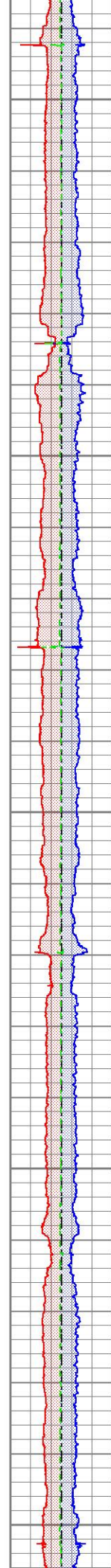
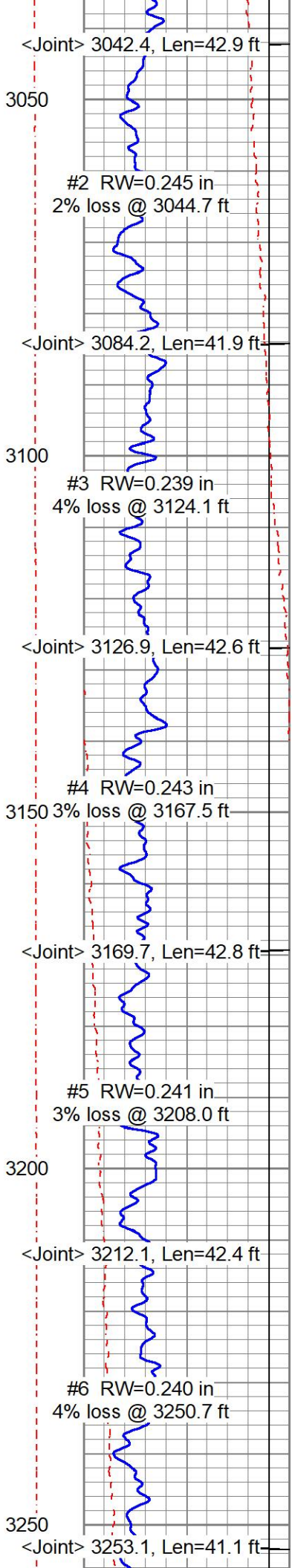


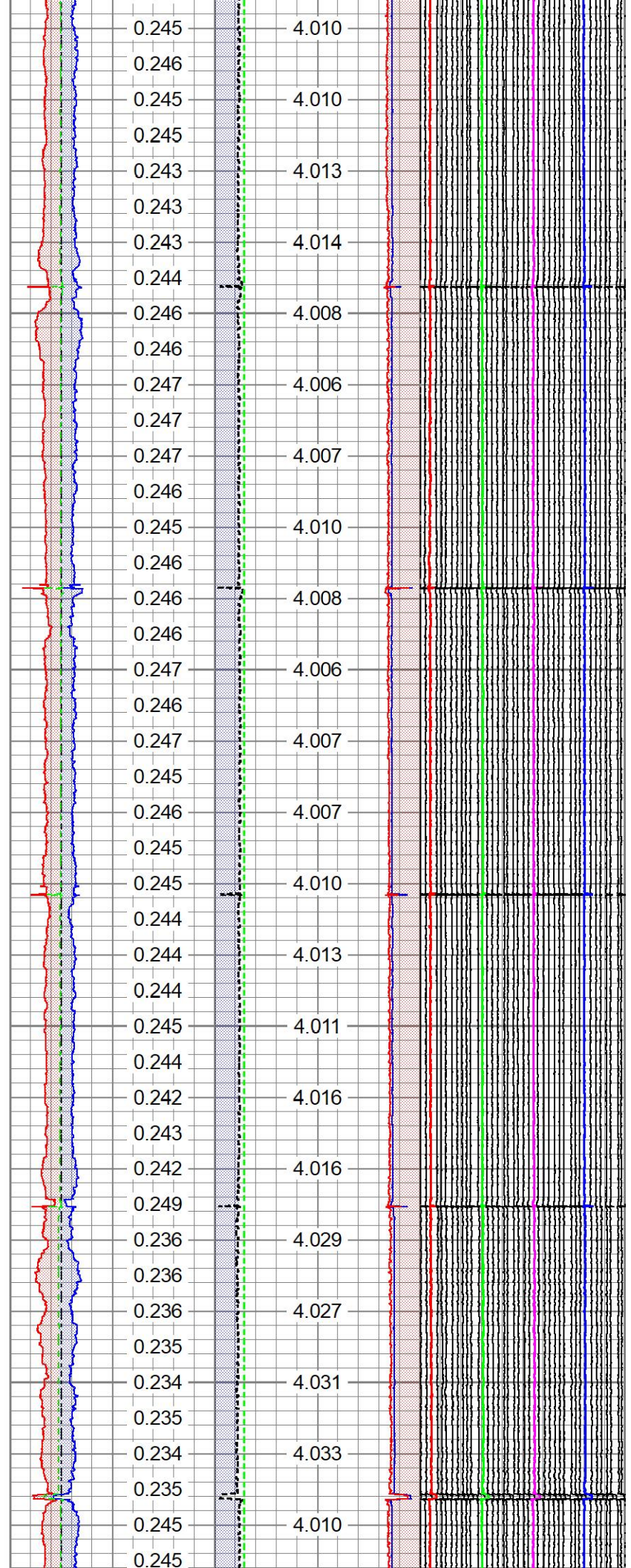
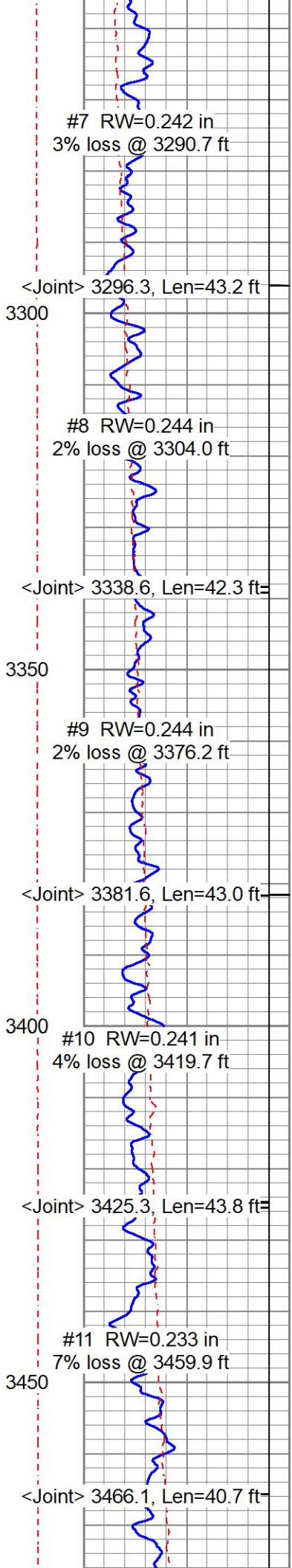
Main Pass 5" = 100' (0 PSI)

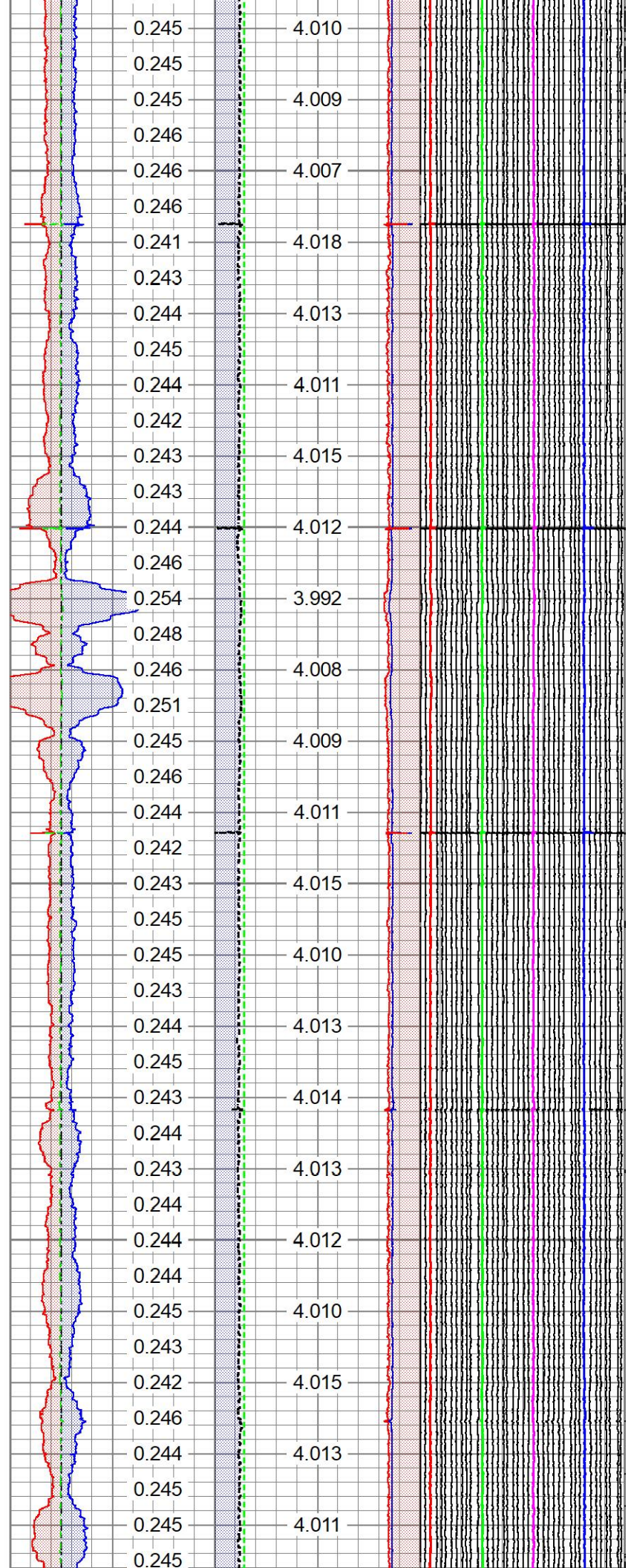
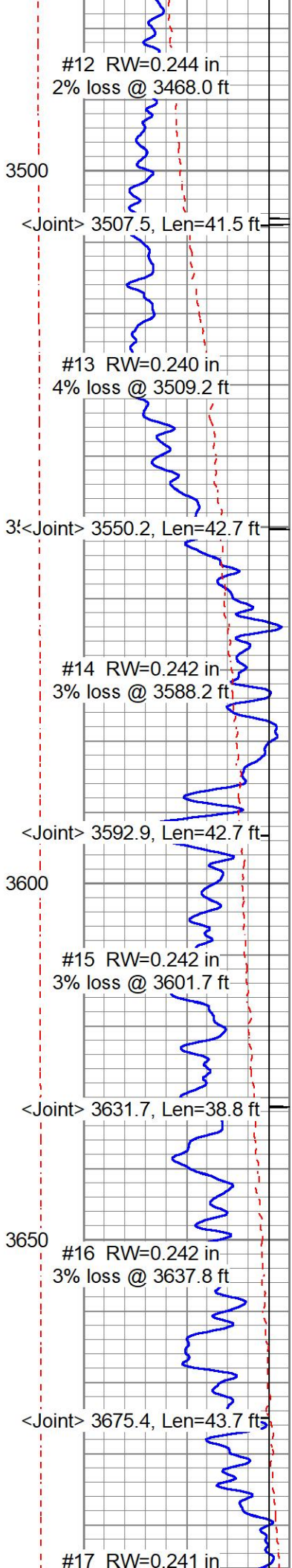
Database File tep ap #43-1-696 mac40 iq.db
 Dataset Pathname main.rc
 Presentation Format 8CMSC4~2
 Dataset Creation Mon Dec 15 15:13:32 2025
 Charted by Depth in Feet scaled 1:240

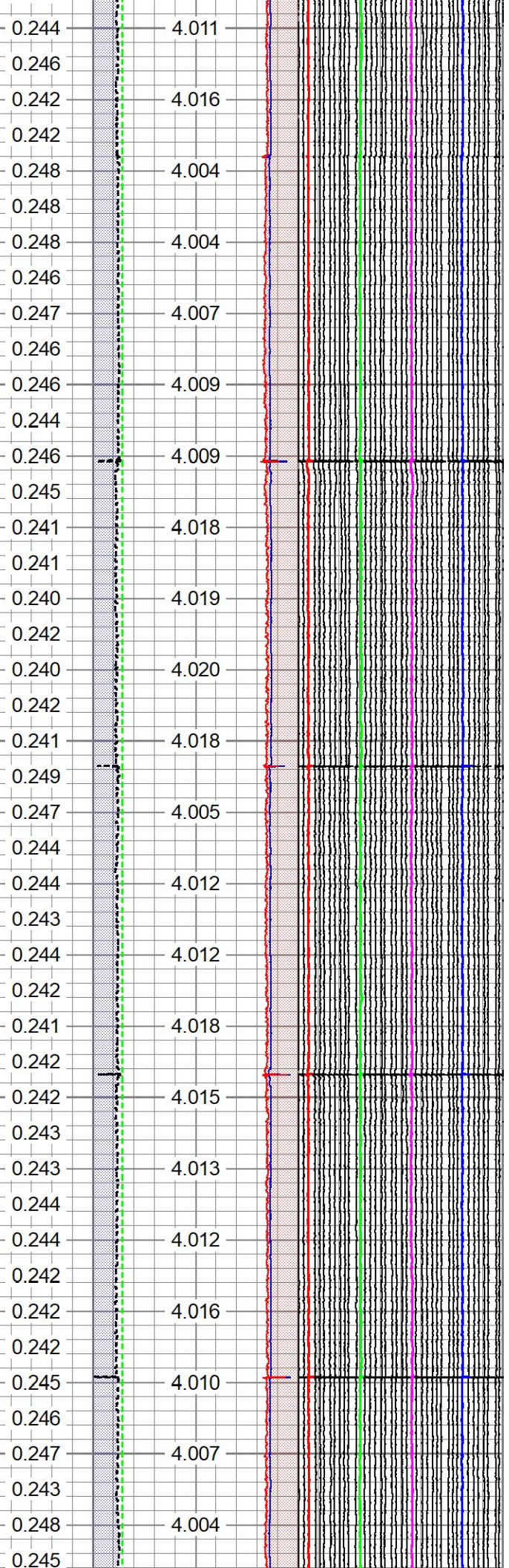
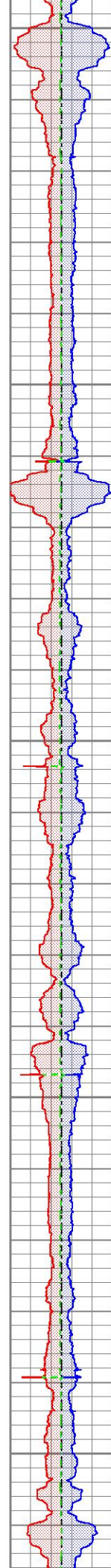
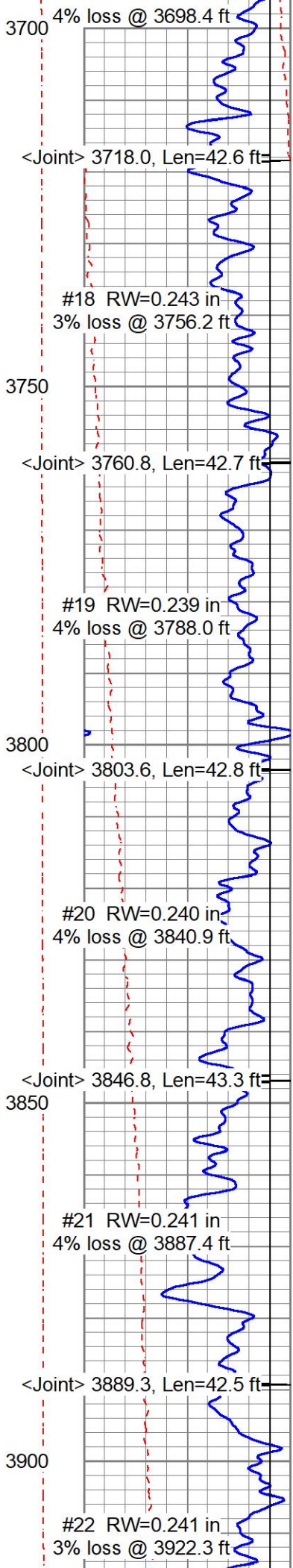
| | | | | | | | |
|---|-----------|-----|--------------|--------------------|--------------------|---------------------|-------------------------|
| GCT_Temp (degF) 0 200 ----- GCT_Temp 15 (degF) 25 ----- PTANN | Gamma Ray | 0 | IMGMAPC (in) | 100 | Nominal Thickness | Average ID | RC10 |
| | (GAPI) | 150 | | | 0 (in) 1 | 2.5 (in) 4.25 | 1.875 (in) 4.375 |
| | CCL\$1 | -1 | | | Minimum Thickness | Maximum ID | 1.25 RC20 (in) 3.75 |
| | | | | | 0 (in) 1 | 4.25 (in) 2.5 | RC30 |
| | | | | | Maximum Thickness | Minimum ID | 0.625 (in) 3.125 |
| | | | | | 0 (in) 1 | 2.5 (in) 4.25 | 0 RC40 (in) 2.5 |
| | | | | Average Thickness | Nominal ID | | |
| | | | | 0 (in) 1 | 4.25 (in) 2.5 | | |
| | | | | AVTK (in) | IDAV (in) | | |

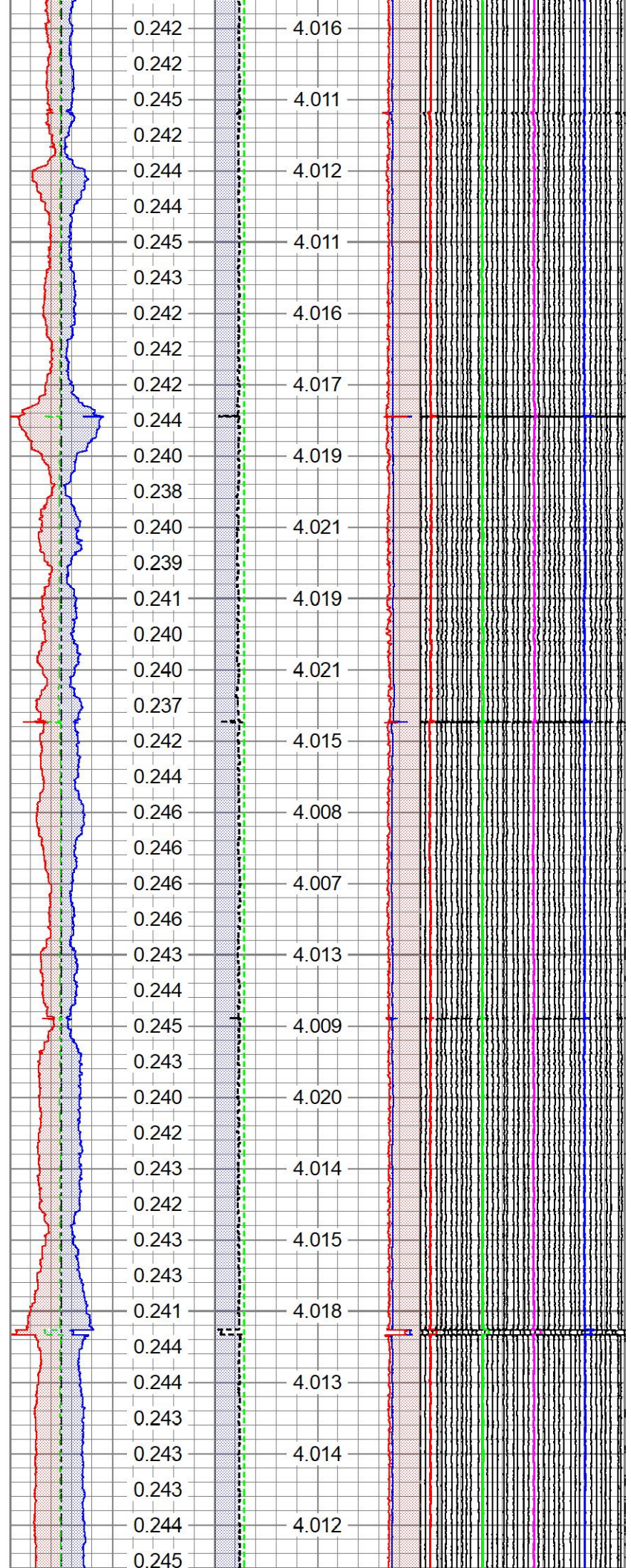
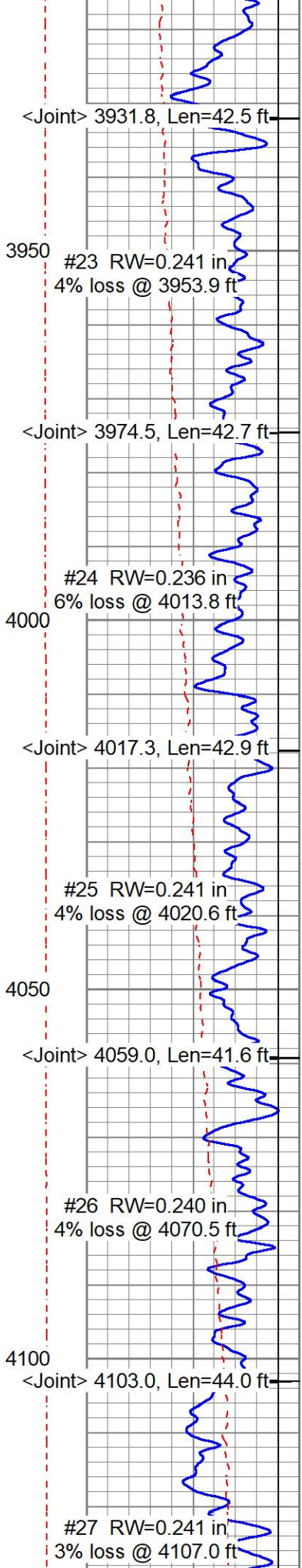


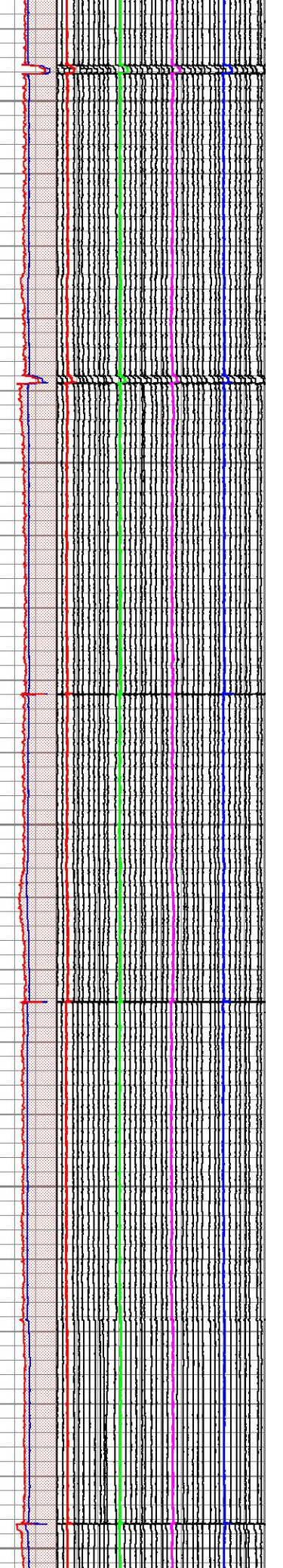
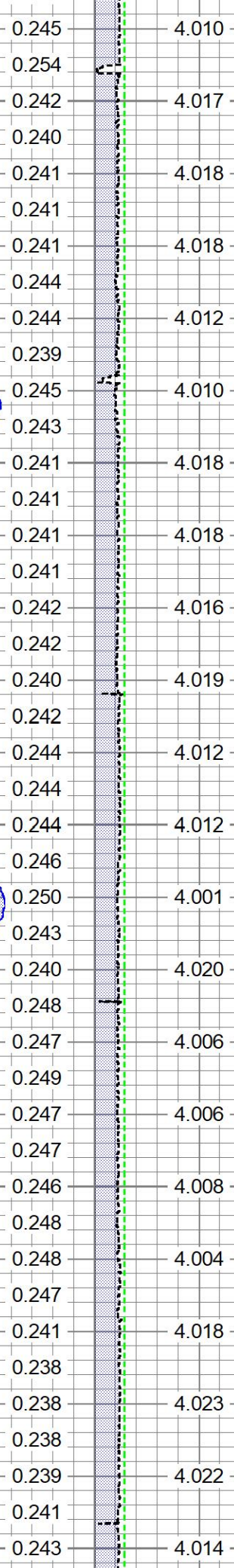
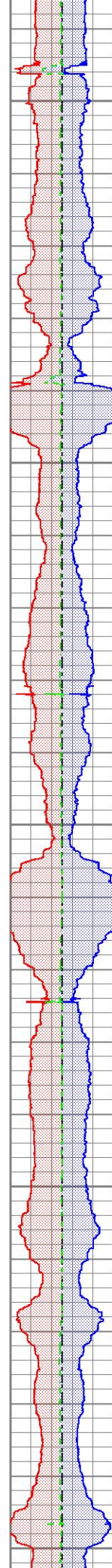
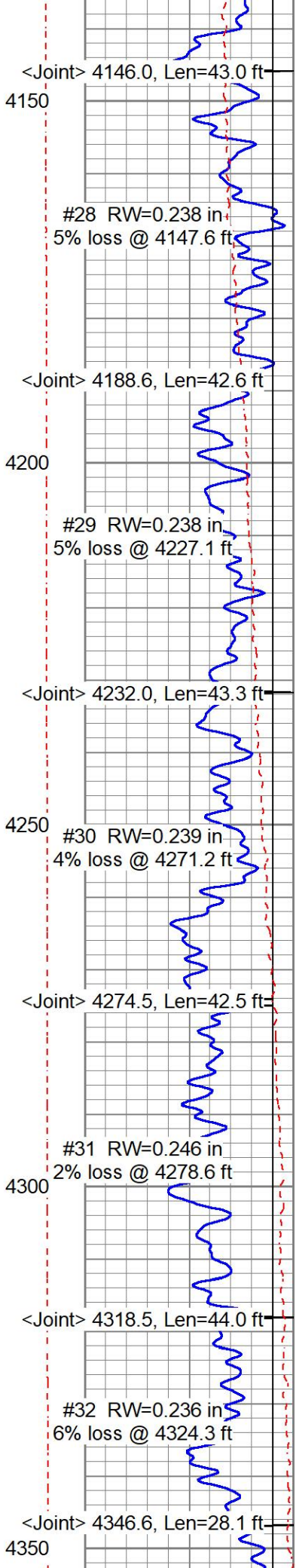


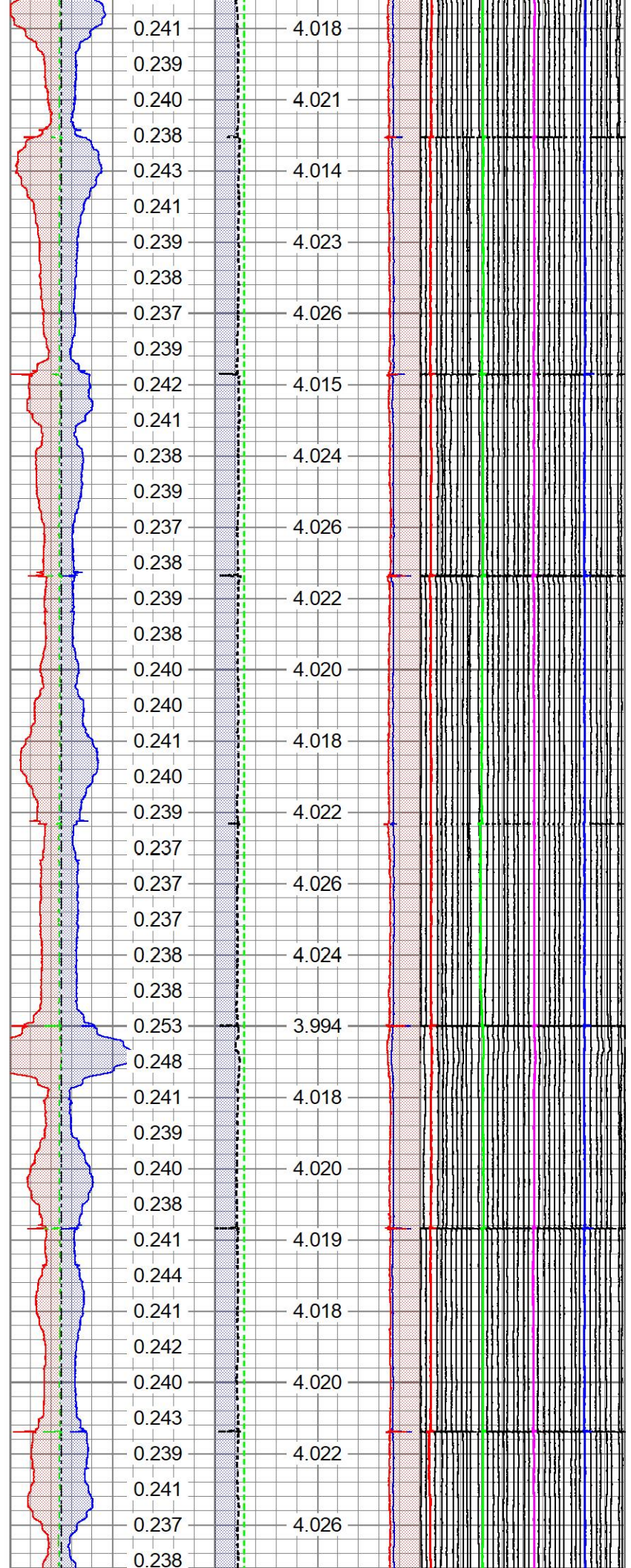
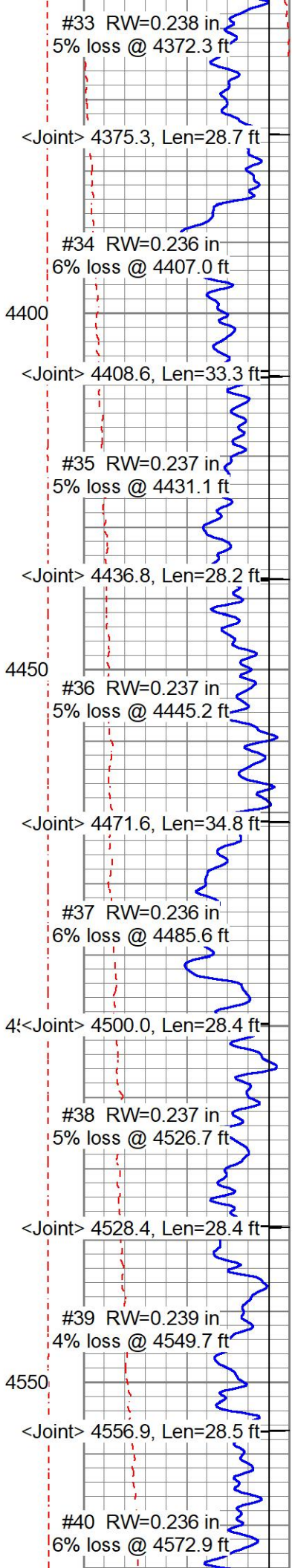


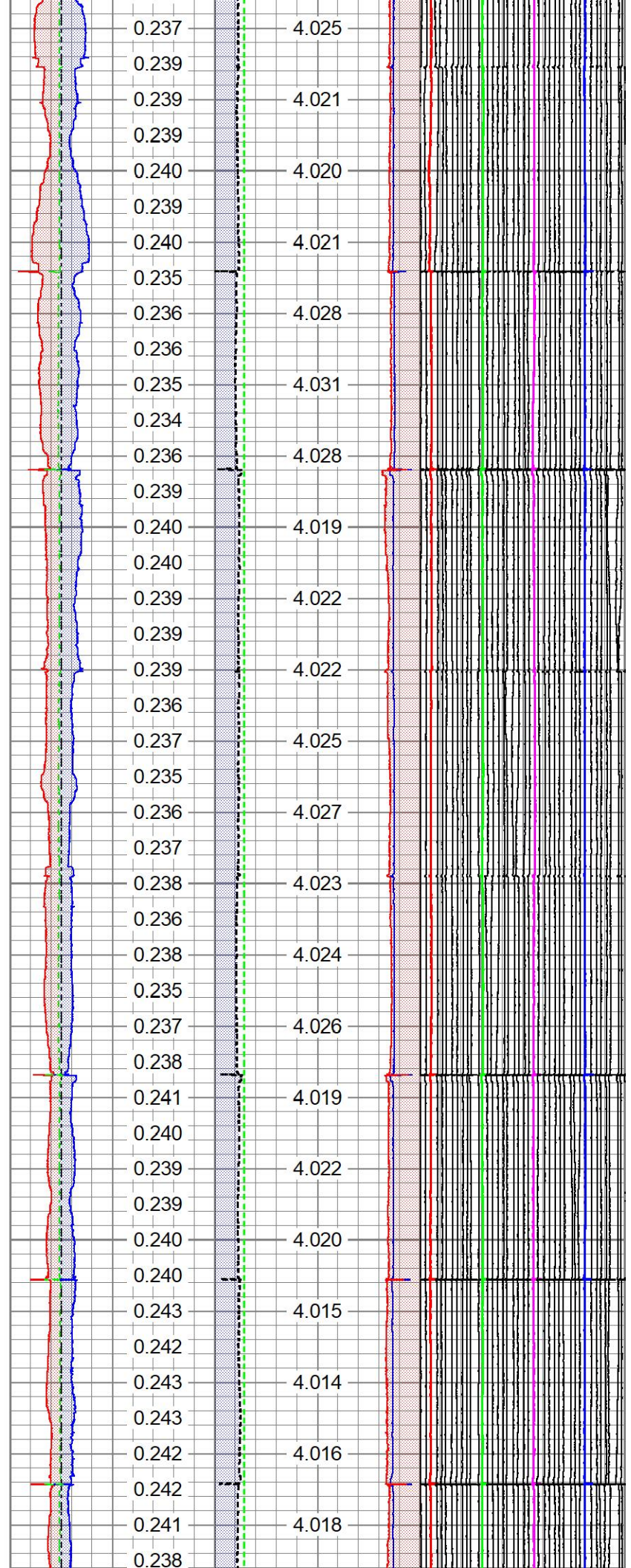
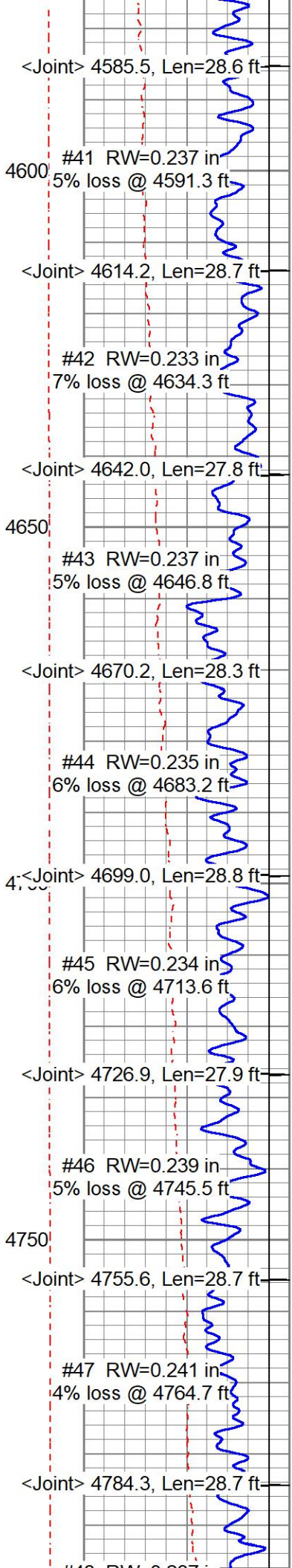


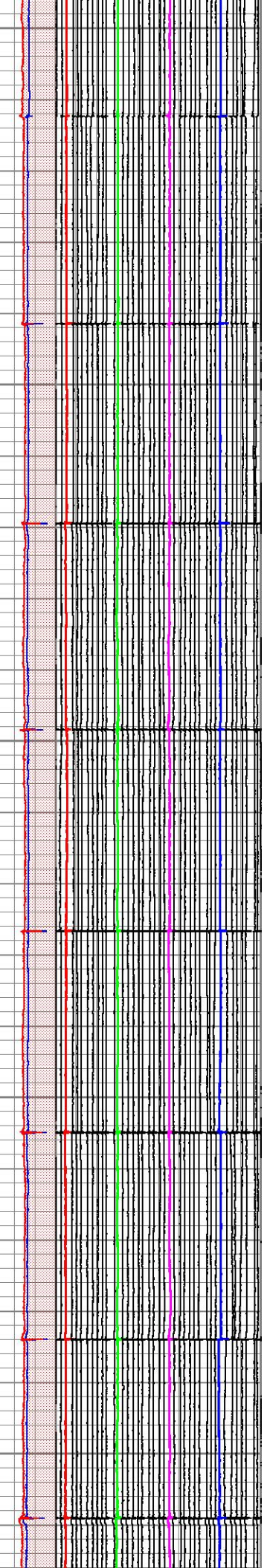
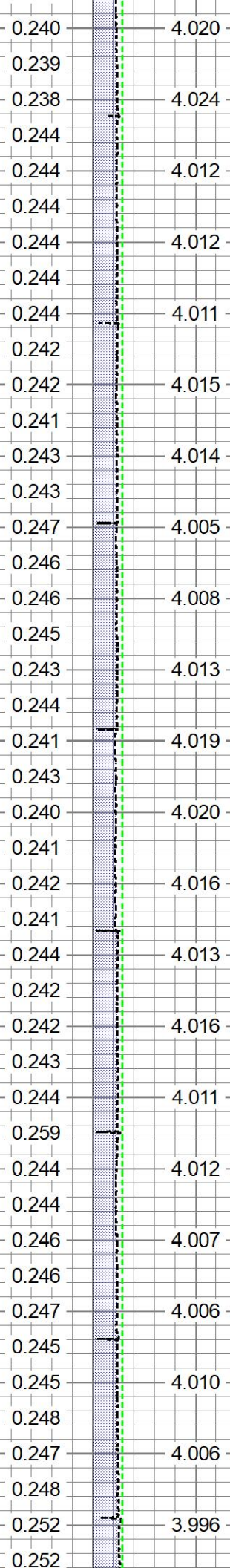
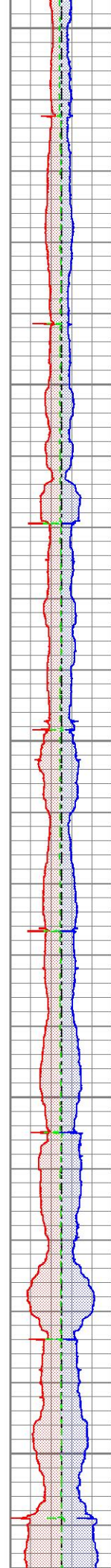
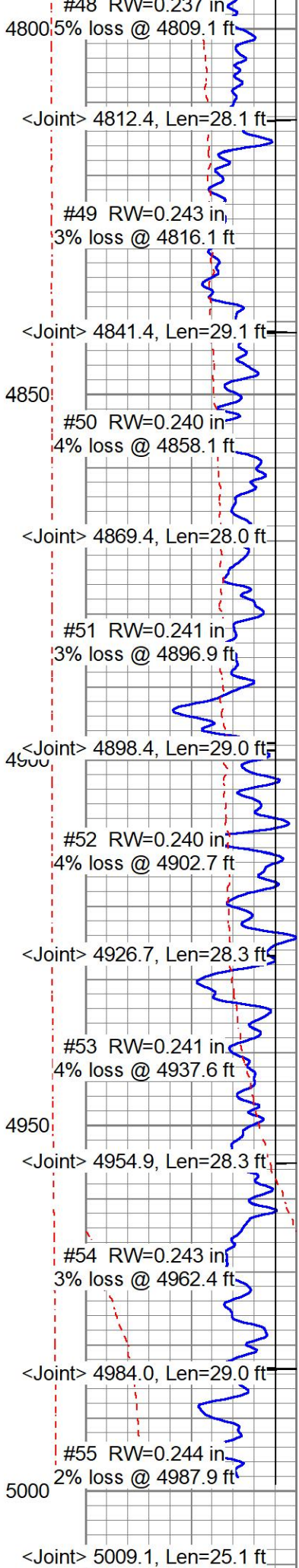


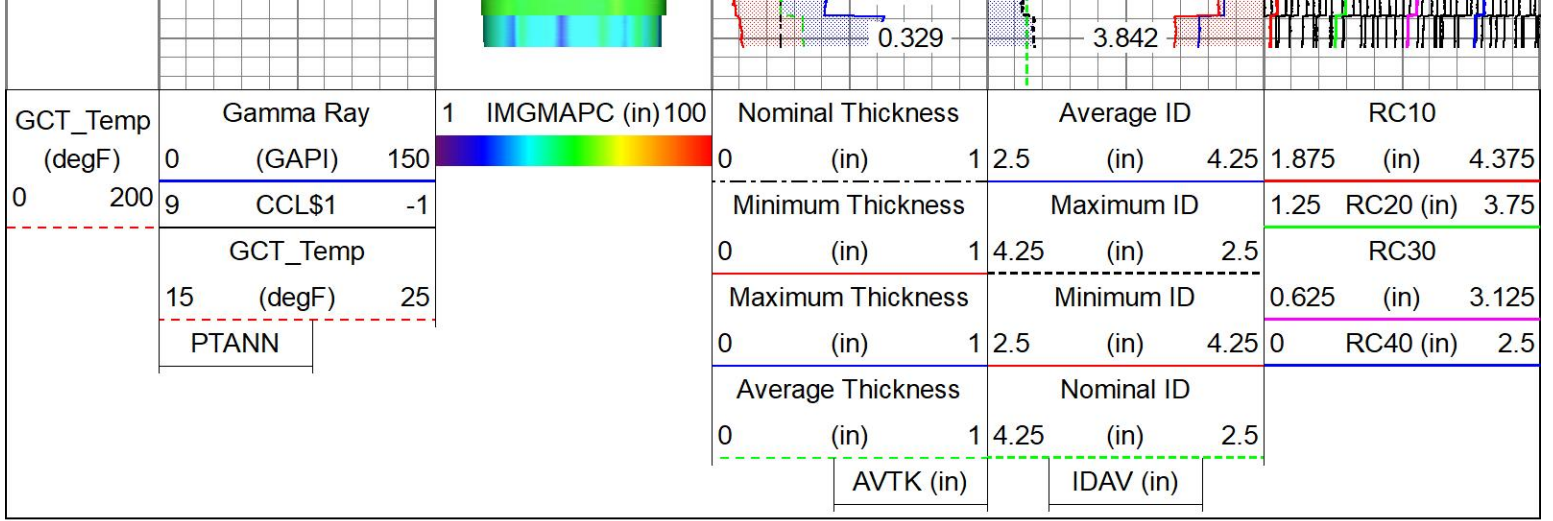






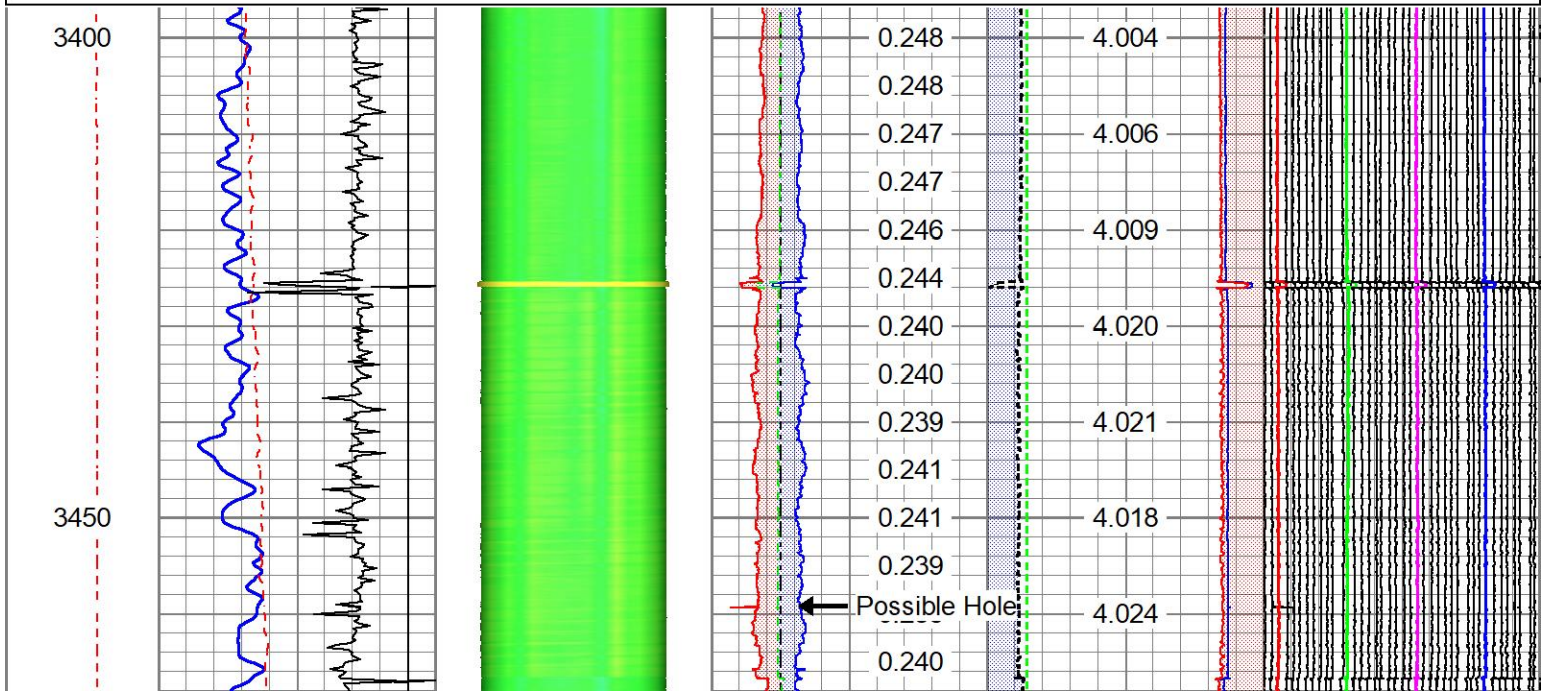
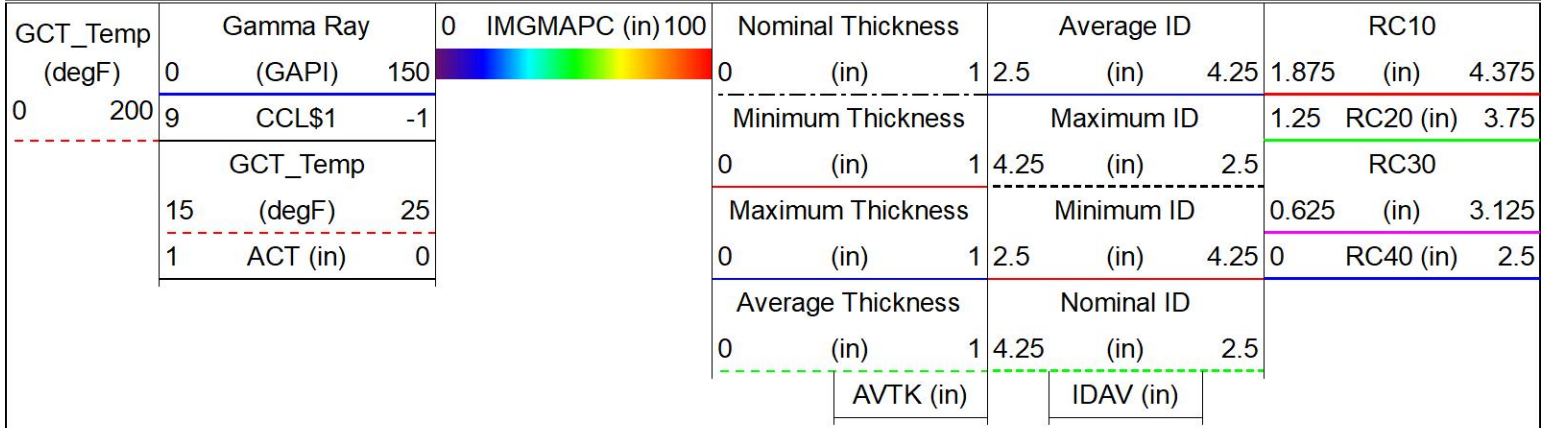


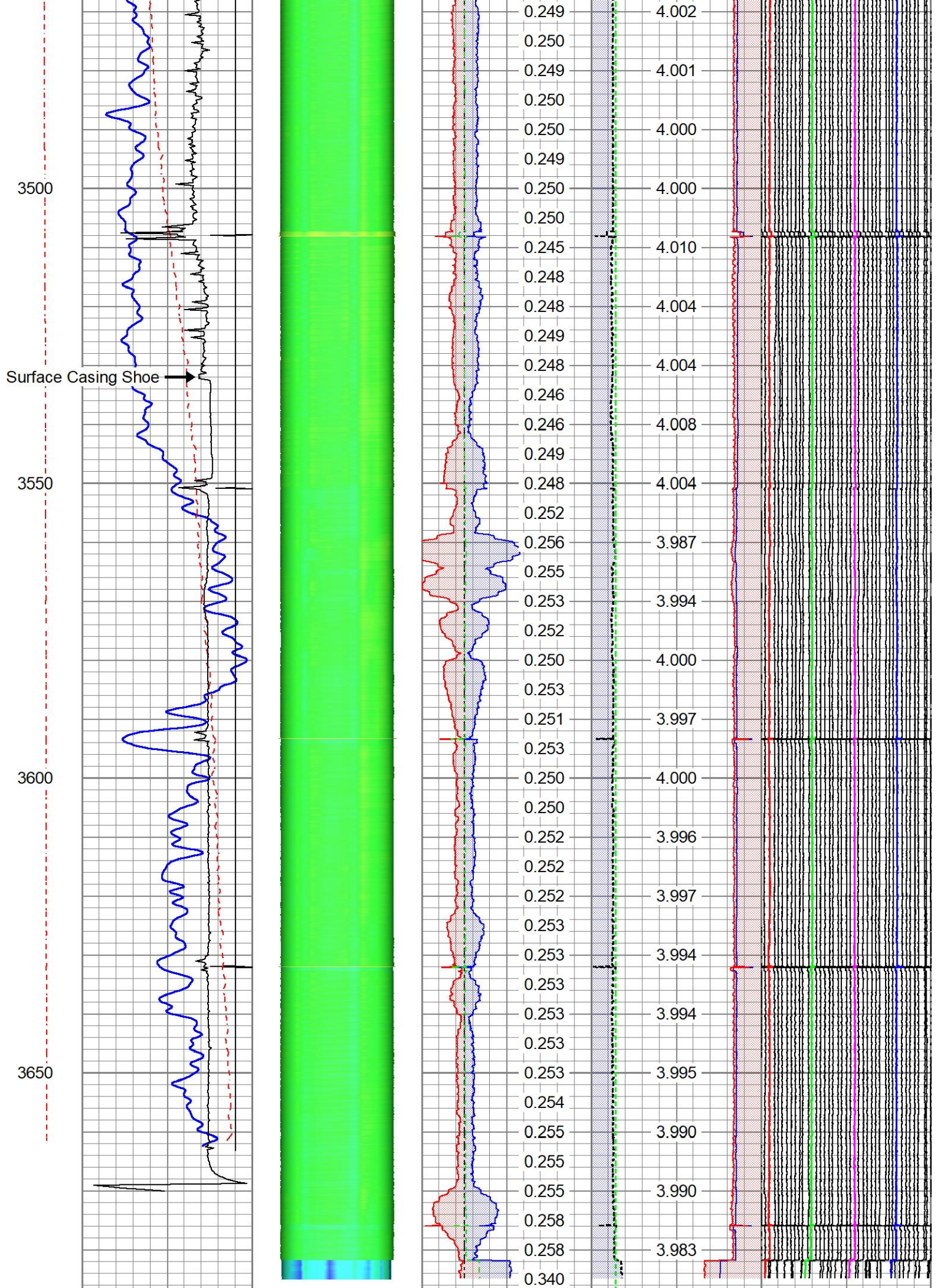




Repeat Pass 5" = 100' (0 PSI)

Database File tep ap #43-1-696 mac40 iq.db
 Dataset Pathname 1repeat.rc
 Presentation Format 8cm5c45gr
 Dataset Creation Mon Dec 15 15:26:00 2025
 Charted by Depth in Feet scaled 1:240





| | | | | | | | | | | | |
|--------------------|------------|-------------------|--------|------------------|-------------------|-----------|------------|---------------|-------|----------------|--|
| GCT_Temp (degF) | Gamma Ray | | 1 | IMGMAPC (in) 100 | Nominal Thickness | | Average ID | | RC10 | | |
| | 0 | (GAPI) 150 | | | 0 | (in) 1 | 2.5 | (in) 4.25 | 1.875 | (in) 4.375 | |
| 0 | 200 | 9 | CCL\$1 | -1 | Minimum Thickness | | Maximum ID | | 1.25 | RC20 (in) 3.75 | |
| GCT_Temp | | 0 | | (in) 1 | 4.25 | (in) 2.5 | RC30 | | | | |
| 15 | (degF) 25 | Maximum Thickness | | Minimum ID | | 0.625 | | (in) 3.125 | | | |
| 1 | ACT (in) 0 | 0 | | (in) 1 | 2.5 | (in) 4.25 | 0 | RC40 (in) 2.5 | | | |
| Average Thickness | | Nominal ID | | 0 | | (in) 1 | 4.25 | (in) 2.5 | | | |
| | | AVTK (in) | | IDAV (in) | | | | | | | |

Calibration Report

Database File tep ap #43-1-696 mac40 iq.db
 Dataset Pathname main.rc
 Dataset Creation Mon Dec 15 15:13:32 2025

40 Arm Multi Sensor Caliper Calibration Report

Serial Number: FW1406-12
 Tool Model: MAC40-0000
 Performed: Mon Dec 15 12:11:08 2025

| Ref Dia: | 3.00 | 4.00 | 5.00 | 6.00 | 7.00 | in |
|----------|------|------|------|------|------|----|
| Arm1 | 1.65 | 2.15 | 2.66 | 3.15 | 3.62 | |
| Arm2 | 1.73 | 2.25 | 2.75 | 3.25 | 3.67 | |
| Arm3 | 1.57 | 2.06 | 2.54 | 3.05 | 3.52 | |
| Arm4 | 1.54 | 2.06 | 2.56 | 3.08 | 3.56 | |
| Arm5 | 1.63 | 2.12 | 2.61 | 3.11 | 3.60 | |
| Arm6 | 1.64 | 2.11 | 2.62 | 3.12 | 3.59 | |
| Arm7 | 1.70 | 2.20 | 2.70 | 3.20 | 3.66 | |
| Arm8 | 1.44 | 1.95 | 2.44 | 2.95 | 3.47 | |
| Arm9 | 1.73 | 2.24 | 2.73 | 3.23 | 3.67 | |
| Arm10 | 1.57 | 2.08 | 2.59 | 3.11 | 3.58 | |
| Arm11 | 1.71 | 2.20 | 2.71 | 3.21 | 3.67 | |
| Arm12 | 1.46 | 1.96 | 2.46 | 2.97 | 3.47 | |
| Arm13 | 1.69 | 2.20 | 2.71 | 3.21 | 3.67 | |
| Arm14 | 1.47 | 1.98 | 2.47 | 2.98 | 3.48 | |
| Arm15 | 1.65 | 2.16 | 2.65 | 3.15 | 3.62 | |
| Arm16 | 1.48 | 1.98 | 2.48 | 2.99 | 3.49 | |
| Arm17 | 1.68 | 2.17 | 2.67 | 3.18 | 3.61 | |
| Arm18 | 1.64 | 2.16 | 2.65 | 3.14 | 3.62 | |
| Arm19 | 1.66 | 2.17 | 2.66 | 3.17 | 3.62 | |
| Arm20 | 1.52 | 2.01 | 2.51 | 3.02 | 3.50 | |
| Arm21 | 1.60 | 2.09 | 2.61 | 3.12 | 3.56 | |
| Arm22 | 1.54 | 2.04 | 2.52 | 3.01 | 3.51 | |
| Arm23 | 1.67 | 2.18 | 2.67 | 3.18 | 3.64 | |
| Arm24 | 1.64 | 2.12 | 2.61 | 3.11 | 3.58 | |
| Arm25 | 1.68 | 2.18 | 2.67 | 3.17 | 3.64 | |
| Arm26 | 1.60 | 2.11 | 2.60 | 3.09 | 3.58 | |
| Arm27 | 1.76 | 2.28 | 2.78 | 3.28 | 3.74 | |
| Arm28 | 1.60 | 2.09 | 2.60 | 3.10 | 3.57 | |
| Arm29 | 1.54 | 2.05 | 2.55 | 3.06 | 3.54 | |
| Arm30 | 1.66 | 2.16 | 2.66 | 3.16 | 3.63 | |
| Arm31 | 1.61 | 2.11 | 2.60 | 3.10 | 3.57 | |
| Arm32 | 1.38 | 1.88 | 2.38 | 2.92 | 3.44 | |
| Arm33 | 1.61 | 2.10 | 2.61 | 3.11 | 3.57 | |
| Arm34 | 1.58 | 2.08 | 2.59 | 3.11 | 3.55 | |
| Arm35 | 1.62 | 2.13 | 2.63 | 3.13 | 3.59 | |
| Arm36 | 1.59 | 2.12 | 2.62 | 3.13 | 3.61 | |
| Arm37 | 1.59 | 2.09 | 2.59 | 3.10 | 3.57 | |
| Arm38 | 1.66 | 2.16 | 2.64 | 3.13 | 3.60 | |
| Arm39 | 1.62 | 2.12 | 2.63 | 3.13 | 3.59 | |

Arm40

1.57

2.05

2.53

3.04

3.52

* Bad

PROBE Verifications Calibration Report

| Performed: | Pre Verification | Post Verification | Casing Check |
|------------|------------------|-------------------|--------------|
| Ref ID: | 0.00 | 0.00 | 0.00 |
| Min. | 0.00 | 0.00 | 0.00 |
| Max. | 0.00 | 0.00 | 0.00 |
| Avg. | 0.00 | 0.00 | 0.00 |
| Dia1 | 0.00 | 0.00 | 0.00 |
| Dia2 | 0.00 | 0.00 | 0.00 |
| Dia3 | 0.00 | 0.00 | 0.00 |
| Dia4 | 0.00 | 0.00 | 0.00 |
| Dia5 | 0.00 | 0.00 | 0.00 |
| Dia6 | 0.00 | 0.00 | 0.00 |
| Dia7 | 0.00 | 0.00 | 0.00 |
| Dia8 | 0.00 | 0.00 | 0.00 |
| Dia9 | 0.00 | 0.00 | 0.00 |
| Dia10 | 0.00 | 0.00 | 0.00 |
| Dia11 | 0.00 | 0.00 | 0.00 |
| Dia12 | 0.00 | 0.00 | 0.00 |
| Dia13 | 0.00 | 0.00 | 0.00 |
| Dia14 | 0.00 | 0.00 | 0.00 |
| Dia15 | 0.00 | 0.00 | 0.00 |
| Dia16 | 0.00 | 0.00 | 0.00 |
| Dia17 | 0.00 | 0.00 | 0.00 |
| Dia18 | 0.00 | 0.00 | 0.00 |
| Dia19 | 0.00 | 0.00 | 0.00 |
| Dia20 | 0.00 | 0.00 | 0.00 |

Inclinometer Calibration Report

| Performed: | Fri Jan 3 09:34:41 2025 | | Low Ref. | High Ref. |
|-----------------|-------------------------|------------|----------|-----------|
| | Low Read. | High Read. | | |
| X Accelerometer | -3622.00 | 3560.00 | -1.00 | 1.00 gee |
| Y Accelerometer | -3674.00 | 3598.00 | -1.00 | 1.00 gee |
| Z Accelerometer | -233333.00 | 3634.37 | 0.00 | 1.00 gee |

Inclinometer Calibration Report

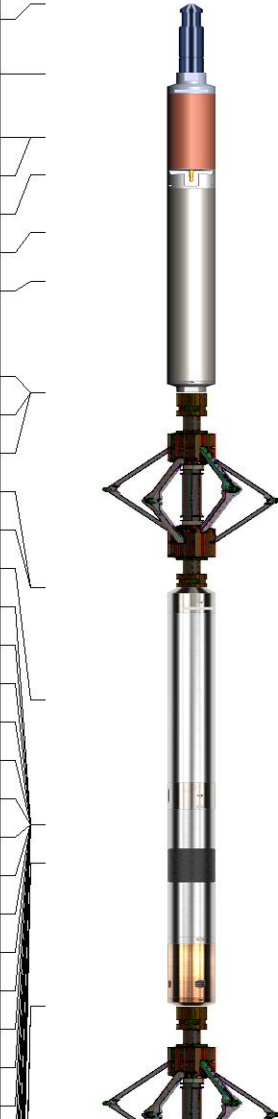
| Performed: | Mon Mar 18 13:37:49 2024 | | Low Ref. | High Ref. |
|-----------------|--------------------------|------------|----------|-----------|
| | Low Read. | High Read. | | |
| X Accelerometer | -1006.00 | 989.00 | -1.00 | 1.00 gee |
| Y Accelerometer | -1015.00 | 1001.00 | -1.00 | 1.00 gee |
| Z Accelerometer | 3.24 | -1001.22 | 0.00 | 1.00 gee |

Gamma Ray Calibration Report

| | | |
|---------------------|--------------------------|----------|
| Serial Number: | FW1305-88 | |
| Tool Model: | 50-GCT275-0000 | |
| Performed: | Tue Jan 23 09:57:44 2024 | |
| Calibrator Value: | 145.9 | GAPI |
| Background Reading: | 78.8 | cps |
| Calibrator Reading: | 300.5 | cps |
| Sensitivity: | 0.6579 | GAPI/cps |

Inclinometer Calibration Report

| | | | | | |
|-----------------|-----------------|------------|----------|-----------|-----|
| Performed: | (Not Performed) | | | | |
| | Low Read. | High Read. | Low Ref. | High Ref. | |
| X Accelerometer | 0.00 | 1.00 | 0.00 | 1.00 | gee |
| Y Accelerometer | 0.00 | 1.00 | 0.00 | 1.00 | gee |
| Z Accelerometer | 0.00 | 1.00 | 0.00 | 1.00 | gee |

| Sensor | Offset (ft) | Schematic | Description | Length (ft) | O.D. (in) | Weight (lb) |
|-------------|-------------|--|---|-------------|-----------|-------------|
| ErrCt | 28.15 |  | STD BLCH-14375 | 1.04 | 1.44 | 1.00 |
| GCT_HV | 27.10 | | Standard 1-7/16" Braided Line Cable Head with 1" Fishing Neck | | | |
| CCL\$2 | 26.15 | | | | | |
| CCL\$1 | 26.15 | | | | | |
| GCT_Temp | 25.60 | | GCT_acc-50-GCT275-0000 (FW1305-88) | 4.77 | 2.75 | 55.00 |
| GR | 24.73 | | Probe 2.75" Gamma Ray - CCL w/Temp (Single Pin) | | | |
| GCT_IntTemp | 24.01 | | | | | |
| GCT_ACCZ | 22.34 | | | | | |
| GCT_ACCY | 22.34 | | | | | |
| GCT_ACCX | 22.34 | | | | | |
| MPT_HV | 19.42 | | BTA-MUD | 2.92 | 2.72 | 25.00 |
| MPT_FWVERS | 19.42 | | BTA 2-3/4" Roller 6 Arm Centralizer with Reversible Ends | | | |
| MPT_IntTemp | 17.76 | | | | | |
| TKR8Q | 15.90 | | | | | |
| TKR8I | 15.90 | | | | | |
| TKR7Q | 15.90 | | | | | |
| TKR7I | 15.90 | | | | | |
| TKR6Q | 15.90 | | | | | |
| TKR6I | 15.90 | | iQ-MPT-CI275-0001 (FW2107-060) | 6.25 | 2.75 | 60.00 |
| TKR5Q | 15.90 | | Probe 2.75" iQ-MPT Thickness Tool | | | |
| TKR5I | 15.90 | | | | | |
| TKR4Q | 15.90 | | | | | |
| TKR4I | 15.90 | | | | | |
| TKR3Q | 15.90 | | | | | |
| TKR3I | 15.90 | | | | | |
| TKR2Q | 15.90 | | | | | |
| TKR2I | 15.90 | | BTA-MUD | 2.92 | 2.72 | 25.00 |
| | | | BTA 2-3/4" Roller 6 Arm Centralizer with Reversible Ends | | | |

| | | | | | | | |
|----------|-------|--|--|---|------|------|-------|
| TKR1Q | 15.90 | | BTA 2-3/4" Roller 6 Arm Centralizer with Reversible Ends | | | | |
| TKR1I | 15.90 | | | | | | |
| TTXQ | 15.90 | | | | | | |
| TTXI | 15.90 | | | | | | |
| CRXHFQ | 15.31 | | | | | | |
| CRXHFI | 15.31 | | | | | | |
| CRXMFQ | 15.31 | | | | | | |
| CRXMF1 | 15.31 | | | MAC40-MAC40-0000 (FW1406-12) Probe 40 arm Caliper | 7.01 | 2.87 | 71.00 |
| CTXHFQ | 15.31 | | | | | | |
| CTXHFI | 15.31 | | | | | | |
| CTXMFQ | 15.31 | | | | | | |
| CTXMF1 | 15.31 | | | | | | |
| MPT_ACCZ | 13.18 | | | | | | |
| MPT_ACCY | 13.18 | | | | | | |
| MPT_ACCX | 13.18 | | | | | | |
| ACCZ | 8.08 | | | | | | |
| ACCY | 8.08 | | | BTA-MUD BTA 2-3/4" Roller 6 Arm Centralizer with Reversible Ends | 2.92 | 2.72 | 25.00 |
| ACCX | 8.08 | | | | | | |
| ETEMP | 6.58 | | | | | | |
| Meas | 4.29 | | Plug-FA108-0000 1.38" Bull Plug | 0.33 | 1.38 | 1.00 | |

Dataset: tep ap #43-1-696 mac40 iq.db: field/well/run1/main.rc
 Total length: 28.15 ft
 Total weight: 263.00 lb
 O.D.: 2.87 in

Company **TEP Rocky Mountain LLC**
 Well **AP #43-1-696**
 Field **Parachute**
 County **Garfield**

State **Colorado**



Multi Sensor 40 Arm Caliper
 Magnetic Wall Thickness
 Gamma Ray CCL