



CDH Consulting, LLC
Thornton, Colorado
720.431.7468
www.CDHConsult.com

Wellhead Closure Investigation and Environmental Summary

LUNDVALL J 18-6 Wellhead
ECMC Remediation Project #42297
Weld County, Colorado

Attachments:

Field Form

Figure 1 – Site Location Map

Figure 2 – Soil Sample and Field Screening Locations Map

Figure 3 – Supplemental Source Mass Removal Map

Table 1 – Field Data Summary Table

Table 2 – Summary of Volatile Organic Soil Chemistry Data

Table 3 – Summary of Polycyclic Aromatic Hydrocarbon Soil Chemistry Data

Table 4 – Summary of Soil Suitability for Reclamation

Table 5 – Summary of Metals in Soil Chemistry Data

Photographic Log

Wellhead Closure Checklist



CDH Consulting, LLC
Thornton, Colorado
720.431.7468
www.CDHConsult.com

FIELD FORM



CDH Consulting, LLC
Thornton, Colorado
720.431.7468
www.CDHConsult.com

FIGURES

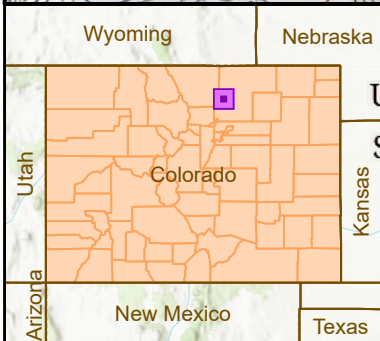
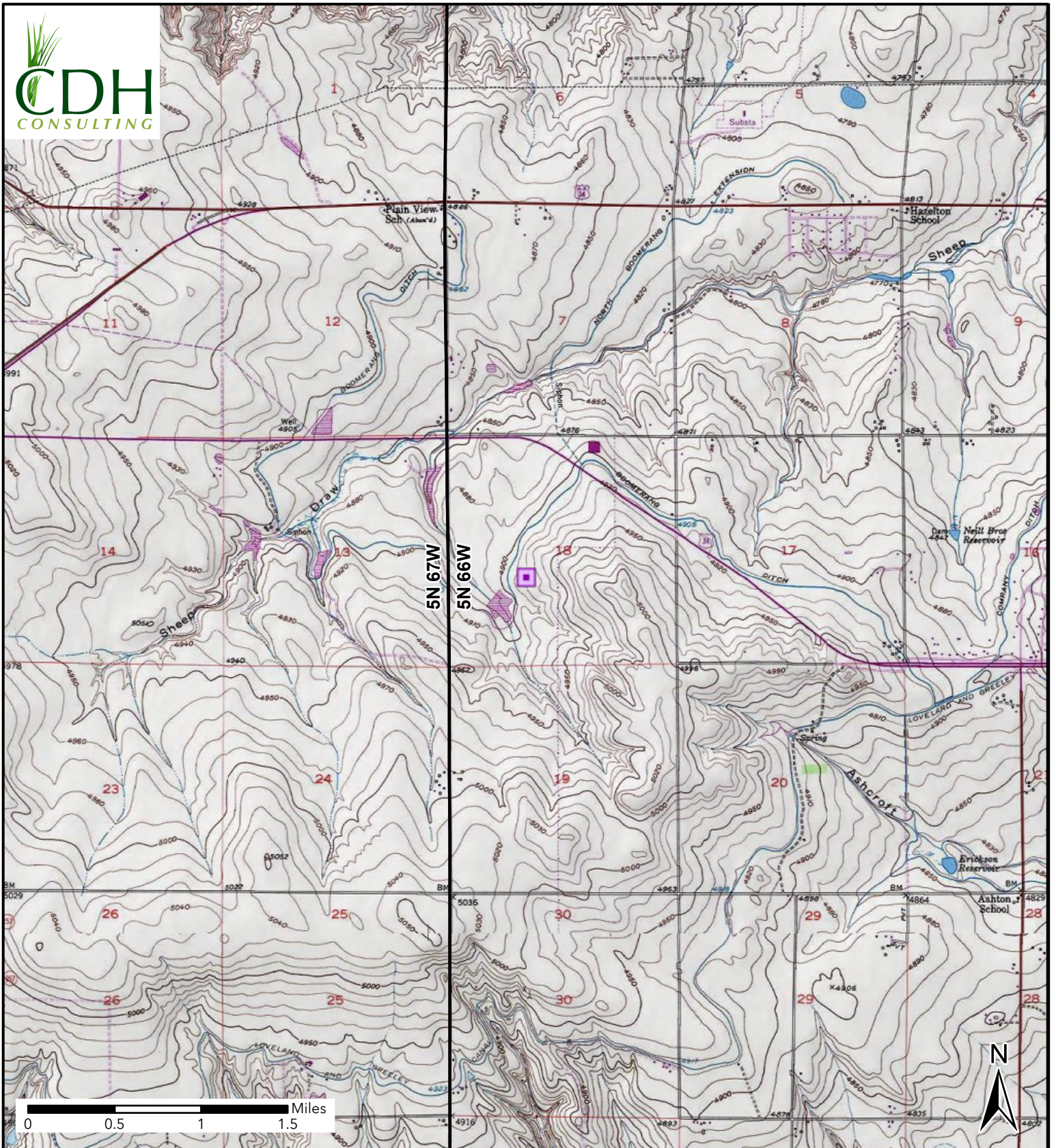
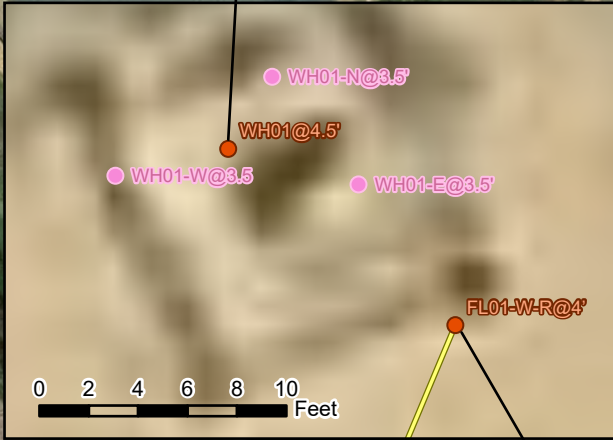


Figure 1
Site Location
LUNDVALL J18-6
L1 SEC 18-T5N-R66W
Weld County, Colorado
PDC Energy Inc

 Site Location



WH01@4.5'
 Date: 6/25/2025
 Arsenic: **11.4 mg/kg**



FL01-W-R@4'
 Date: 6/26/2025
 Naphthalene: **0.0694 mg/kg**
 1-Methyl - Naphthalene: **0.00683 mg/kg**
 2-Methyl- Naphthalene: **0.02 mg/kg**
 Chromium (VI): **0.215 mg/kg**

FL01-S-R@3'
 Date: 6/25/2025
 pH: **8.44**

NOTE:
 XXXX@X = Sample Name @ Depth in Feet
BOLD - Above ECMC Table 915-1 Standards
 "mg/kg" = milligrams per kilogram

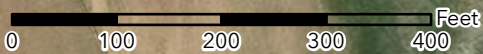


Figure 2
Sample Location Map
 LUNDVALL J 18-6
 L1 SEC 18-T5N-R66W
 Weld County, Colorado
 PDC Energy Inc.

- Soil Sample
- Screening Point
- Background Sample
- Flowline Abandoned In Place

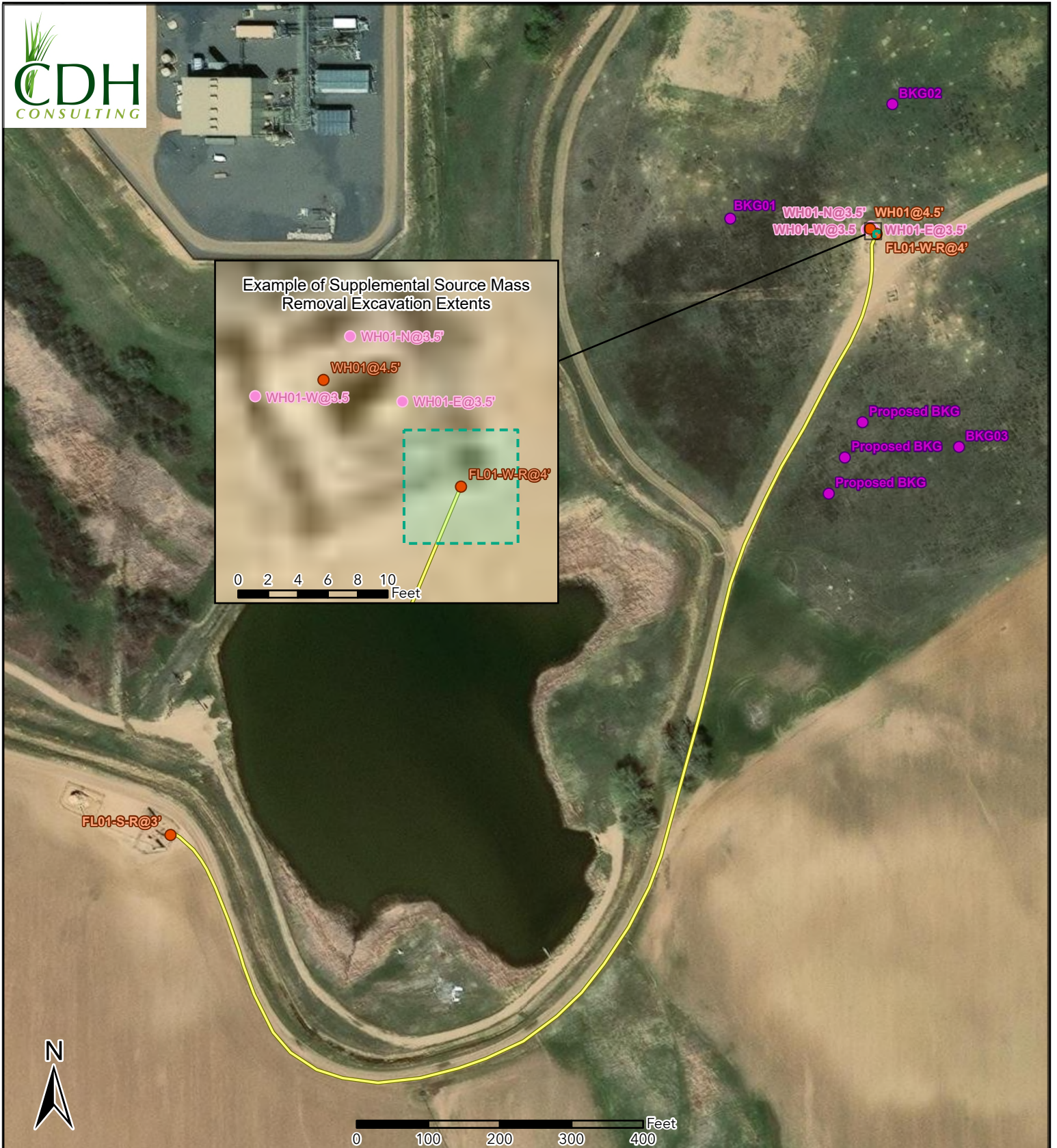


Figure 3 Supplemental Source Mass Removal Map

LUNDEVALL J 18-6
L1 SEC 18-T5N-R66W
Weld County, Colorado
PDC Energy Inc.

- Soil Sample
- Background Sample
- Screening Point
- Flowline Abandoned In Place
- 10' x 10' Proposed Excavation



CDH Consulting, LLC
Thornton, Colorado
720.431.7468
www.CDHConsult.com

TABLES

TABLE 1
FIELD DATA SUMMARY TABLE
PDC 69175
LUNDVALL J 18-6, WELD COUNTY, COLORADO
REM # 42297

Sample ID	Sample Date	Depth (ft)	GPS Data Latitude/Longitude		PDOP Value	VOC Concentration (ppm)
WH01@4.5'	10/27/2025	4.5	40.397681	-104.825635	0.900000	0.2
WH01-N-@3.5'	10/27/2025	3.5	40.397689	-104.825629	0.900000	0.3
WH01-S-@3.5'	10/27/2025	3.5	40.397677	-104.825616	0.900000	0.1
WH01-E-@3.5'	10/27/2025	3.5	40.397666	-104.825632	0.900000	0.2
WH01-W-@3.5'	10/27/2025	3.5	40.397678	-104.825652	0.900000	0.3
BKG01@4'	10/27/2025	4	40.397728	-104.826346	1.000000	1.2
BKG02@4'	10/27/2025	4	40.398165	-104.825532	1.000000	0.3
BKG03@4'	10/27/2025	4	40.396850	-104.82520	0.900000	1.3
FL01-S-R@3'	6/25/2025	3	40.395368	-104.829160	1.100000	0.0
FL01-W-R@4'	6/26/2025	4	40.397662	-104.825602	0.864239	2.4
BGK01@3.5'	6/26/2025	3.5	40.397471	-104.825933	0.979868	0.3
BGK02@3.5'	6/26/2025	3.5	40.397439	-104.826146	0.943478	0.4
BGK03@3.5'	6/26/2025	3.5	40.397196	-104.825969	0.849066	0.7

1. Global Positioning System (GPS) data is provided in decimal degrees using North American Datum (NAD) 83 UTMZone 13 North.

2. Volatile organic compound (VOC) concentrations are measured in the field using a photoionization detector (PID).

PDOP = Position Dilution of Precision

ppm = Parts per million

ft = Feet

TABLE 2
SUMMARY OF VOLATILE ORGANIC SOIL CHEMISTRY DATA
PDC 69175
LUNDVALL J 18-6, WELD COUNTY, COLORADO
REM # 42297

Sample ID	Sample Date	Depth (ft)	Benzene (mg/kg)	Toluene (mg/kg)	Ethyl-Benzene (mg/kg)	Xylenes (mg/kg)	1,2,4-Trimethyl-Benzene (mg/kg)	1,3,5-Trimethyl-Benzene (mg/kg)	Naphthalene (mg/kg)	TPH (mg/kg)	TPH GRO (mg/kg)	TPH DRO (mg/kg)	TPH ORO (mg/kg)
ECMC Table 915-1 Limits (Residential SSL)			1.2	490	5.8	58	30	27	2	500	500**		
ECMC Table 915-1 Limits (Protection of Groundwater SSL)			0.0026	0.69	0.78	9.9	0.0081	0.0087	0.0038	500	500**		
WH01@4.5	10/27/2025	4.5	<0.0012	<0.0025	<0.0025	<0.0025	<0.0025	<0.0025	<0.0025	18.6	<0.25	6.32	12.3
FL01-S-R@3'	6/25/2025	3	<0.00100	<0.0100	<0.0100	<0.100	<0.00500	<0.00500	<0.00300	<8.100	<0.100	<4.00	<4.00
FL01-W-R@4'	6/26/2025	4	<0.00100	<0.0100	<0.0100	<0.100	<0.00500	<0.00500	0.0694	66.2	<0.100	18.3	47.9

1. Bold values exceed the ECMC Table 915-1 limit(s)
 2. Red & blue highlighted soil analytical values indicate an exceedance of the referenced soil screening level (SSL)
 3. * Indicates laboratory minimum detection limit in excess of SSL
 4. ** Summation of GRO+DRO+ORO must be less than 500 mg/kg
 5. Samples are reported as dry weight unless otherwise indicated in the laboratory PDF report(s)
- (<) = Analytical result is less than the indicated laboratory reporting limit.
TPH-GRO = Total petroleum hydrocarbons - gasoline range organics
TPH-DRO = Total petroleum hydrocarbons - diesel range organics
TPH-ORO = Total petroleum hydrocarbons - oil range organics
mg/kg = Milligrams per kilogram
ft = Feet

TABLE 3
SUMMARY OF POLYCYCLIC AROMATIC HYDROCARBON SOIL CHEMISTRY DATA
PDC 69175
LUNDVALL J 18-6, WELD COUNTY, COLORADO
REM # 42297

Sample ID	Sample Date	Depth (ft)	Acenaphthene (mg/kg)	Anthracene (mg/kg)	Benzo (a) Anthracene (mg/kg)	Benzo (a) Pyrene (mg/kg)	Benzo (b) Fluoranthene (mg/kg)	Benzo (k) Fluoranthene (mg/kg)	Chrysene (mg/kg)	Dibenzo (a,h) Anthracene (mg/kg)	Fluoranthene (mg/kg)	Fluorene (mg/kg)	Indeno (1,2,3-cd) Pyrene (mg/kg)	Pyrene (mg/kg)	1-Methyl - Naphthalene (mg/kg)	2-Methyl- Naphthalene (mg/kg)
ECMC Table 915-1 Limits (Residential SSL)			360	1800	1.1	0.11	1.1	11	110	0.11	240	240	1.1	180	18	24
ECMC Table 915-1 Limits (Protection of Groundwater SSL)			0.55	5.8	0.011	0.24	0.3	2.9	9	0.096	8.9	0.54	0.98	1.3	0.006	0.019
WH01@4.5'	10/27/2025	4.5	<0.0049	<0.0049	<0.0062	<0.0049	<0.0049	<0.0049	<0.0049	<0.0049	<0.0049	<0.0049	<0.0049	<0.0049	<0.0049	<0.0049
FL01-S-R@3'	6/25/2025	3	<0.0330	<0.0330	<0.00600	<0.0330	<0.0330	<0.0330	<0.0330	<0.0330	<0.0330	<0.0330	<0.0330	<0.0330	<0.00300	<0.0120
FL01-W-R@4'	6/26/2025	4	<0.0330	<0.0330	<0.00600	<0.0330	<0.0330	<0.0330	<0.0330	<0.0330	<0.0330	<0.0330	<0.0330	<0.0330	0.00683	0.02

1. Bold values exceed the ECMC Table 915-1 limit(s)
 2. Red & blue highlighted soil analytical values indicate an exceedance of the referenced soil screening level (SSL)
 3. * Indicates laboratory minimum detection limit in excess of SSL
 4. Samples are reported as dry weight unless otherwise indicated in the laboratory PDF report(s)
- (<) = Analytical result is less than the indicated laboratory reporting limit.
mg/kg = Milligrams per kilogram
ft = Feet

TABLE 4
SUMMARY OF SOIL SUITABILITY FOR RECLAMATION
PDC 69175
LUNDVALL J 18-6, WELD COUNTY, COLORADO
REM # 42297

Sample ID	Sample Date	Depth (ft)	pH (Standard Units)	EC (mmhos/cm)	SAR (Standard Units)	Boron (mg/L)
ECMC Table 915-1 Soil Suitability Limits			6 - 8.3	<4	<6	2
WH01@4.5'	10/27/2025	4.5	7.68	0.870	0.594	<0.500
FL01-S-R@3'	6/25/2025	3	8.44	0.212	0.103	0.110
FL01-W-R@4'	6/26/2025	4	8.11	0.593	0.956	<0.100
BKG01@4'	10/27/2025	4	8.09	0.250	0.519	<0.500
BKG02@4'	10/27/2025	4	7.63	2.70	1.54	<0.500
BKG03@4'	10/27/2025	4	7.90	0.650	1.21	<0.500
BGK01@3.5'	6/26/2025	3.5	7.93	0.274	0.0982	<0.100
BGK02@3.5'	6/26/2025	3.5	7.99	0.205	0.0812	<0.100
BGK03@3.5'	6/26/2025	3.5	8.04	0.220	0.107	<0.100
Maximum Background Concentration			8.09	2.70	1.54	NA

1. **Bold** faced values exceed the ECMC Table 915-1 limit(s), but are within background concentrations.

2. **Bold** faced values exceed the ECMC Table 915-1 limit(s) and native background concentrations.

3. Brown highlighted soil analytical values indicate a regulatory exceedance.

4. Samples are reported as dry weight unless otherwise indicated in the laboratory PDF report(s)

ft = Feet

EC = Electrical Conductivity

SAR = Sodium adsorption ratio

mmhos/cm = millimhos per centimeter

mg/L = milligrams per liter

(<) = Analytical result is less than the indicated laboratory reporting limit

TABLE 5
SUMMARY OF METALS IN SOIL CHEMISTRY DATA
PDC 69175
LUNDVALL J 18-6, WELD COUNTY, COLORADO
REM # 42297

Sample ID	Sample Date	Depth (ft)	Arsenic (mg/kg)	Barium (mg/kg)	Cadmium (mg/kg)	Chromium (VI) (mg/kg)	Copper (mg/kg)	Lead (mg/kg)	Nickel (mg/kg)	Selenium (mg/kg)	Silver (mg/kg)	Zinc (mg/kg)
ECMC Table 915-1 Limits (Residential SSL)			0.68	15000	71	0.3	3100	400	1500	390	390	23000
ECMC Table 915-1 Limits (Protection of Groundwater SSL)			0.29	82	0.38	0.00067	46	14	26	0.26	0.8	370
WH01@4.5'	10/27/2025	4.5	11.4	115	0.150	<0.490 *	11.9	9.20	10.6	<0.270	<0.140	37.8
FL01-S-R@3'	6/25/2025	3	2.77	75.3	0.180	<0.193*	<10.0	<10.0	<10.0	0.16	<0.500	<50.0
FL01-W-R@4'	6/26/2025	4	4.08	121	0.334	0.215	13.9	<10.0	10.1	0.256	<0.500	82.9
BKG01@4'	10/27/2025	4	2.60	60.4	<0.110	<0.420 *	5.00	4.50	6.00	<0.220	<0.110	18.9
BKG02@4'	10/27/2025	4	3.50	74.8	0.120	<0.420 *	8.60	7.20	9.00	<0.200	<0.100	31.0
BKG03@4'	10/27/2025	4	4.60	99.2	<0.098	<0.410 *	5.20	5.80	8.50	<0.200	<0.098	21.3
BGK01@3.5'	6/26/2025	3.5	3.67	85.5	0.115	<0.200*	<10.0	<10.0	<10.0	0.183	<0.500	<50.0
BGK02@3.5'	6/26/2025	3.5	3.01	57.0	<0.100	<0.200*	<10.0	<10.0	<10.0	0.167	<0.500	<50.0
BGK03@3.5'	6/26/2025	3.5	2.67	52.9	<0.100	<0.200*	<10.0	<10.0	<10.0	0.138	<0.500	<50.0
1.25x Maximum Background Concentration			5.75	124	0.150	NA	10.8	9.0	11.3	0.229	NA	38.8

1. **Bold** faced values exceed the ECMC Table 915-1 limit(s), but are within 1.25x background concentrations.

2. **Bold** faced values exceed the ECMC Table 915-1 limit(s) and native background concentrations.

3. Red & blue highlighted soil analytical values indicate an exceedance of the referenced soil screening level (SSL).

4. Non-detect background results accounted for in the highest background concentration by using the reporting limit.

5. Samples are reported as dry weight unless otherwise indicated in the laboratory PDF report(s)

ECMC = Energy & Carbon Management Commission

(<) = Analytical result is less than the indicated laboratory reporting limit.

mg/kg = Milligrams per kilogram

ft = Feet

* Indicates laboratory minimum detection limit in excess of SSL

NA = Not analyzed



CDH Consulting, LLC
Thornton, Colorado
720.431.7468
www.CDHConsult.com

PHOTOGRAPHIC LOG

Photographic Log
LUNDVALL J 18-6 (REM # 42297)
PDC Energy, Inc.
10/27/2025

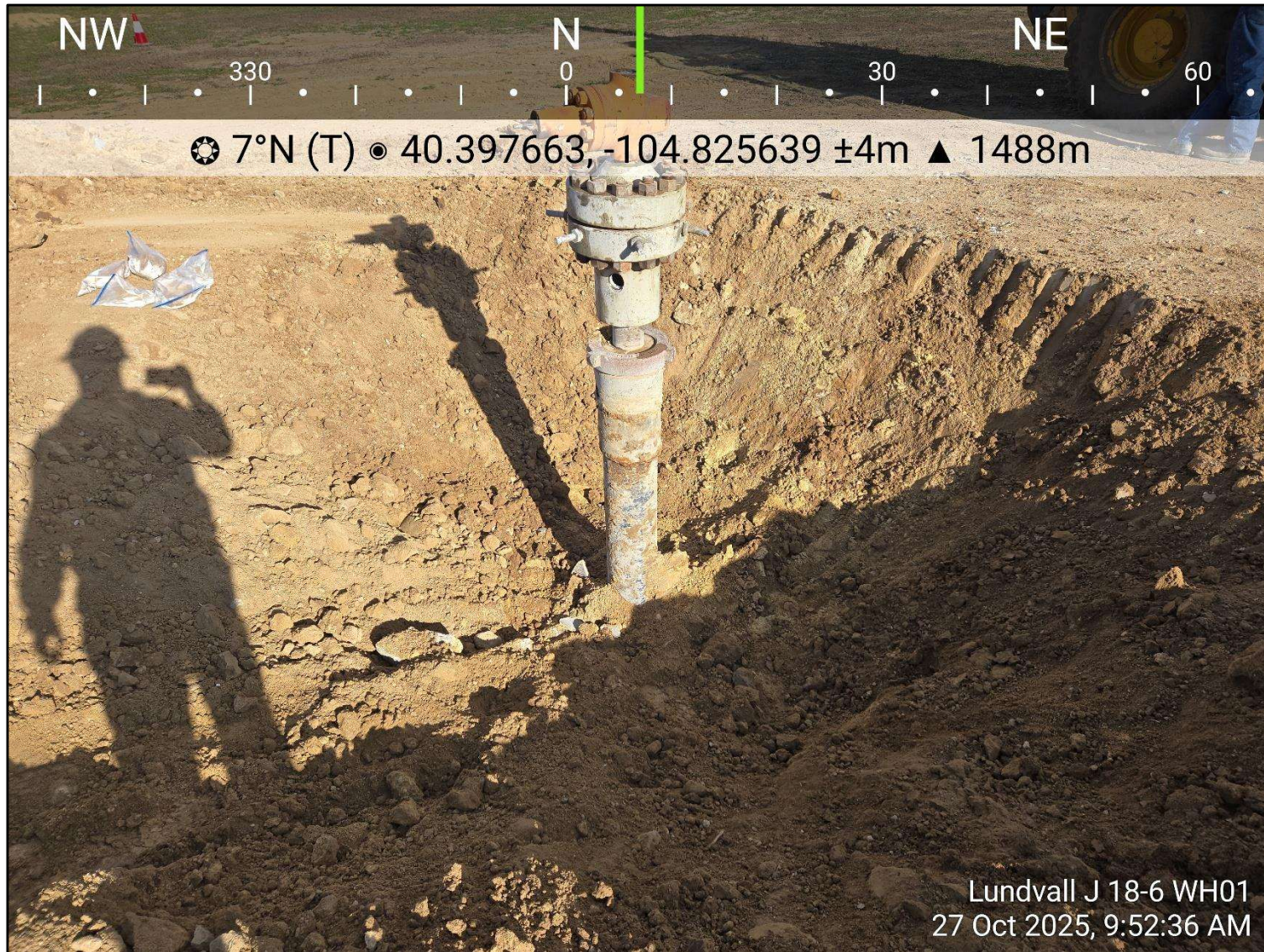


Photo 1: View of wellhead excavation, facing north

Photographic Log
LUNDVALL J 18-6 (REM # 42297)
PDC Energy, Inc.
10/27/2025

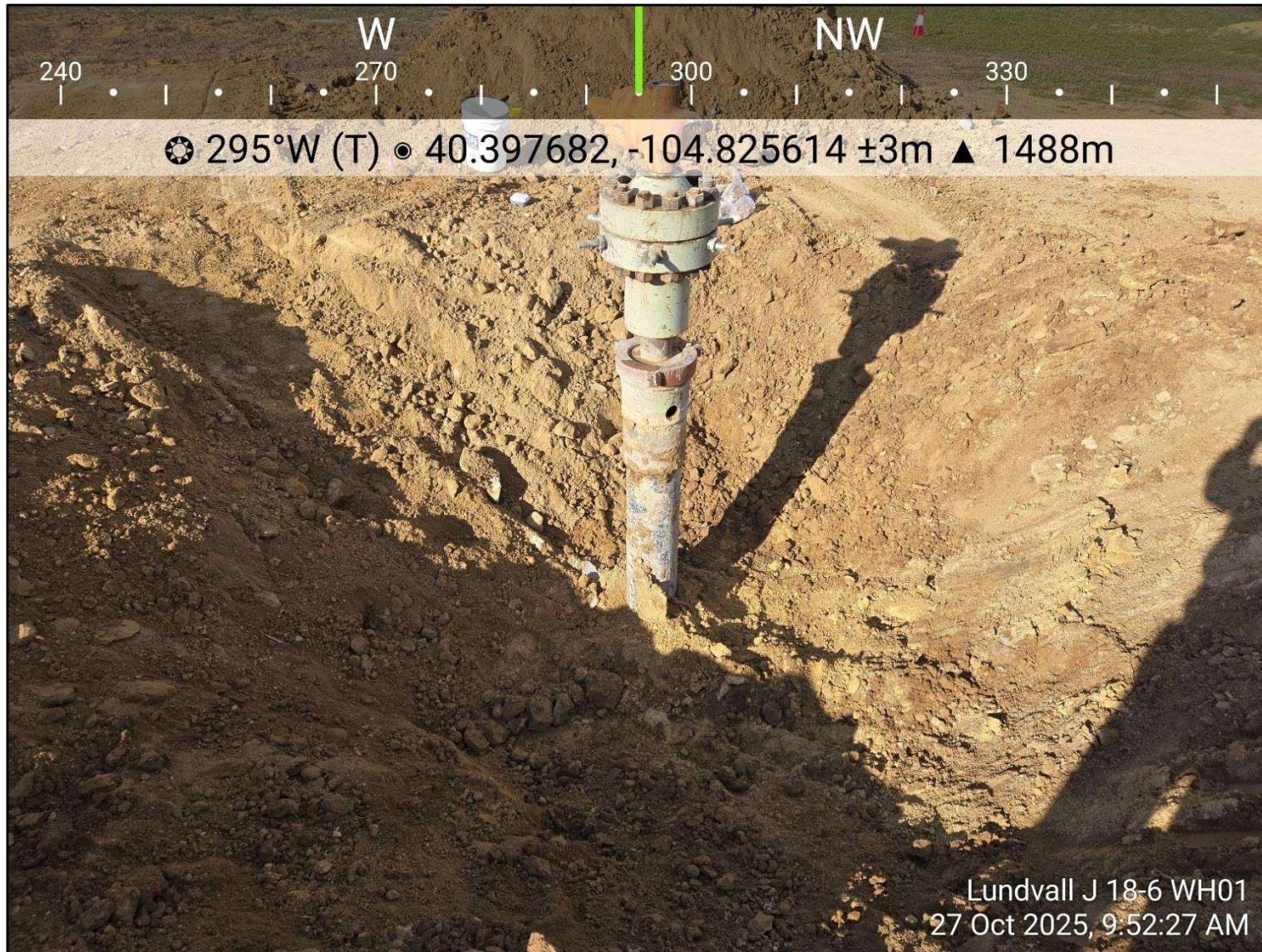


Photo 2: View of wellhead excavation, facing west - northwest

Photographic Log
LUNDVALL J 18-6 (REM # 42297)
PDC Energy, Inc.
10/27/2025



Photo 3: View of wellhead excavation, facing south

Photographic Log
LUNDVALL J 18-6 (REM # 42297)
PDC Energy, Inc.
10/27/2025



Photo 4: View of wellhead excavation, facing east

Photographic Log
LUNDVALL J 18-6 (REM # 42297)
PDC Energy, Inc.
10/27/2025

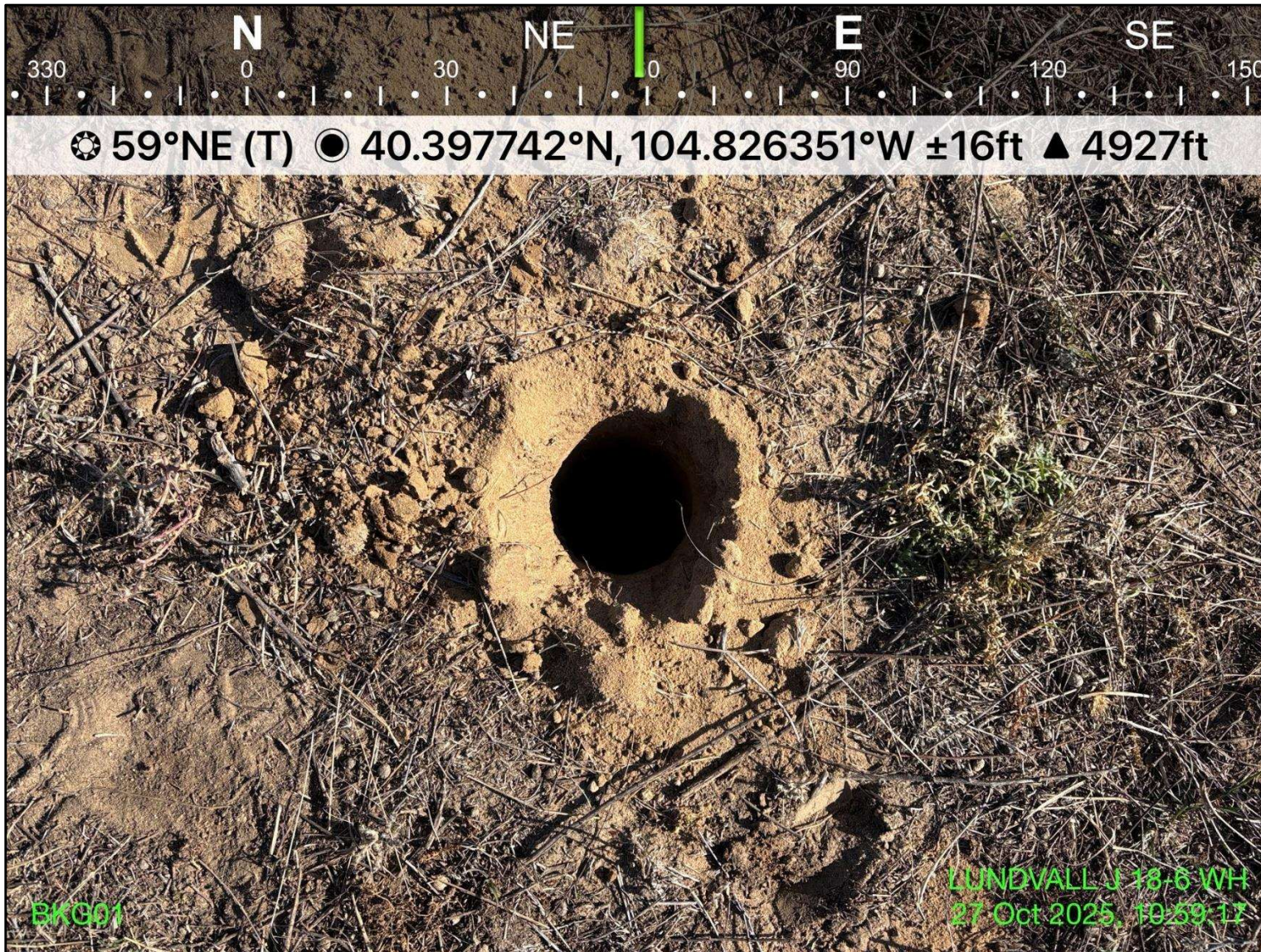


Photo 5: View of background location 1, facing east - northeast

Photographic Log
LUNDVALL J 18-6 (REM # 42297)
PDC Energy, Inc.
10/27/2025

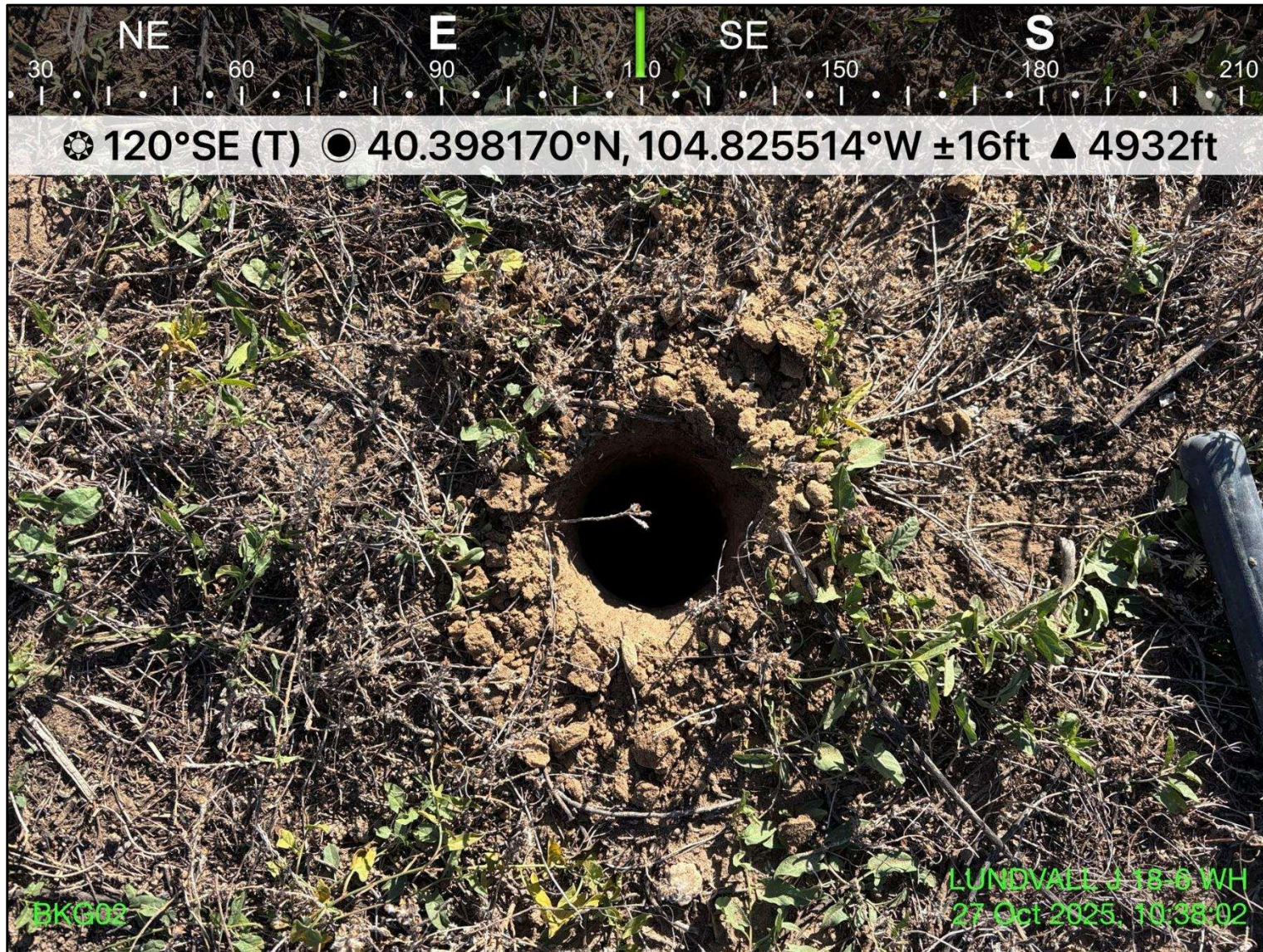


Photo 6: View of background location 2, facing east - southeast

Photographic Log
LUNDVALL J 18-6 (REM # 42297)
PDC Energy, Inc.
10/27/2025



Photo 7: View of background location 3, facing east - southeast



CDH Consulting, LLC
Thornton, Colorado
720.431.7468
www.CDHConsult.com

WELLHEAD CLOSURE CHECKLIST

Wellhead Closure Checklist

ECMC Rule 911.a.(4) Environmental Site Closure Assessment Field Form

Additional attachments (optional):		Pit Closure		Tank Battery Closure		Flowline Closure		Partially Buried Vault Closure	
Site Name & ECMC Facility Number: Lundvall J 18-6 / # 277551		Date: 10/27/2025						Remediation Project #: 42297	
Associated Wells: Lundvall J 18-6		Age of Site: 1/19/2006 Spud Date						Number of Photos Attached: 7	
Location: 40.397660, -104.825630							Estimated Facility Size (acres): 0.1		
General Condition of Site: Good									
USCS Soil Type: Clayey sands (SC)				Estimated Depth to Groundwater: Groundwater not encountered					
Hydrocarbon Impacted Soils / Spills: Not encountered									
Salt Crusted Soils or Impacted Vegetation: Not encountered									
Wellhead(s)									
Well API	05-123-22966								
Age	1/19/2006 (spud date)								
Condition of surface around wellhead	Good								
PID Readings	0.1 - 0.3 ppm								
Condition of subsurface	Good, no staining present								
PID Readings	0.1 - 0.3 ppm								
Sample taken? Location/Sample ID#	WH01@4.5'								
Photo Number(s)	See attached								
Other observations regarding wellheads: None									
Summary									
Was impacted soil identified? No Yes - less than 10 cubic yards Yes - more than 10 cubic yards									
Total number of samples field screened: 5				Total number of samples collected: 1					
Highest PID Reading: 0.3 ppm				Total number of samples submitted to lab for analysis: 1					
If more than 10 cubic yards of impacted soil were observed:									
Vertical extent:				Estimated spill volume:					
Lateral extent:				Volume of soil removed:					
Is additional investigation required?									
Was groundwater encountered during the investigation? No Yes - not impacted or in contact with impacted soils Yes - groundwater impacted and/or in contact with impacted soils									
Measured depth to groundwater:				Was remedial groundwater removal conducted?		Yes		No	
Date Groundwater was encountered:				Commencement date of removal:					
Sheen on groundwater?		Yes	No	Volume of groundwater removed prior to sampling:					
Free product observed?		Yes	No	Volume of groundwater removed post sampling:					
Total number of samples collected:				Total Volume of groundwater removed:					
Total number of samples submitted to lab for analysis:									