

Freund 14-15

SWSW Sec. 15-T5S-R63W

API #: 005-07109

Facility ID:

Remediation Project #: 42681

Wellhead, Flowline, and Facility Decommissioning Package

January 2026

Prepared by the GiSdT Soil Reporting Tool, version 2.2.0

On behalf of Axis Exploration LLC

FIELD NOTES AND PHOTO LOG





Freund 14-15

Data package
REM #42681

Site Name: Freund 14-15	Date: January 7, 2026	ECMC Rem #: 42681	Weather: Sunny
Sampler Name: Sam O'Boyle	Surface Gradient: W	Livestock: None	Surrounding Land Use: Undeveloped

Sample ID	Time	Depth	Soil PID (ppm)	Soil Stain / GW Sheen	Odor	Soil Description (USCS)	Photo (Y/N)	Associated Equipment	Lab (Y/N)
14-15WHN01@4	08:40	4	0	No	No	SW	Y	WH	No
14-15WHE01@4	08:45	4	0	No	No	SW	Y	WH	No
14-15WHS01@4	08:50	4	0	No	No	SW	Y	WH	No
14-15WHW01@4	08:55	4	0	No	No	SW	Y	WH	No
14-15WHB01@5	09:05	5	0	No	No	SW	Y	WH	Yes
14-15FLB01@3	09:15	3	0	No	No	SW	Y	FL	Yes
SP-CS01@5	09:30	5	0	No	No	SW	Y	SP-CS	Yes
14-15FLB02@3	09:50	3	0	No	No	SW	Y	FL	Yes

Sample ID: 14-15WHN01@4	
Location: 39.60921962, -104.43316986	
Depth (ft): 4	
	

Sample ID: 14-15WHE01@4	
Location: 39.60920964, -104.43315313	
Depth (ft): 4	
	

Sample ID: 14-15WHS01@4 Location: 39.60919384, -104.43316592
Depth (ft): 4



Sample ID: 14-15WHW01@4 Location: 39.60920603, -104.43318472
Depth (ft): 4





Sample ID: 14-15WHB01@5 Location: 39.60920844, -104.43317399
Depth (ft): 5



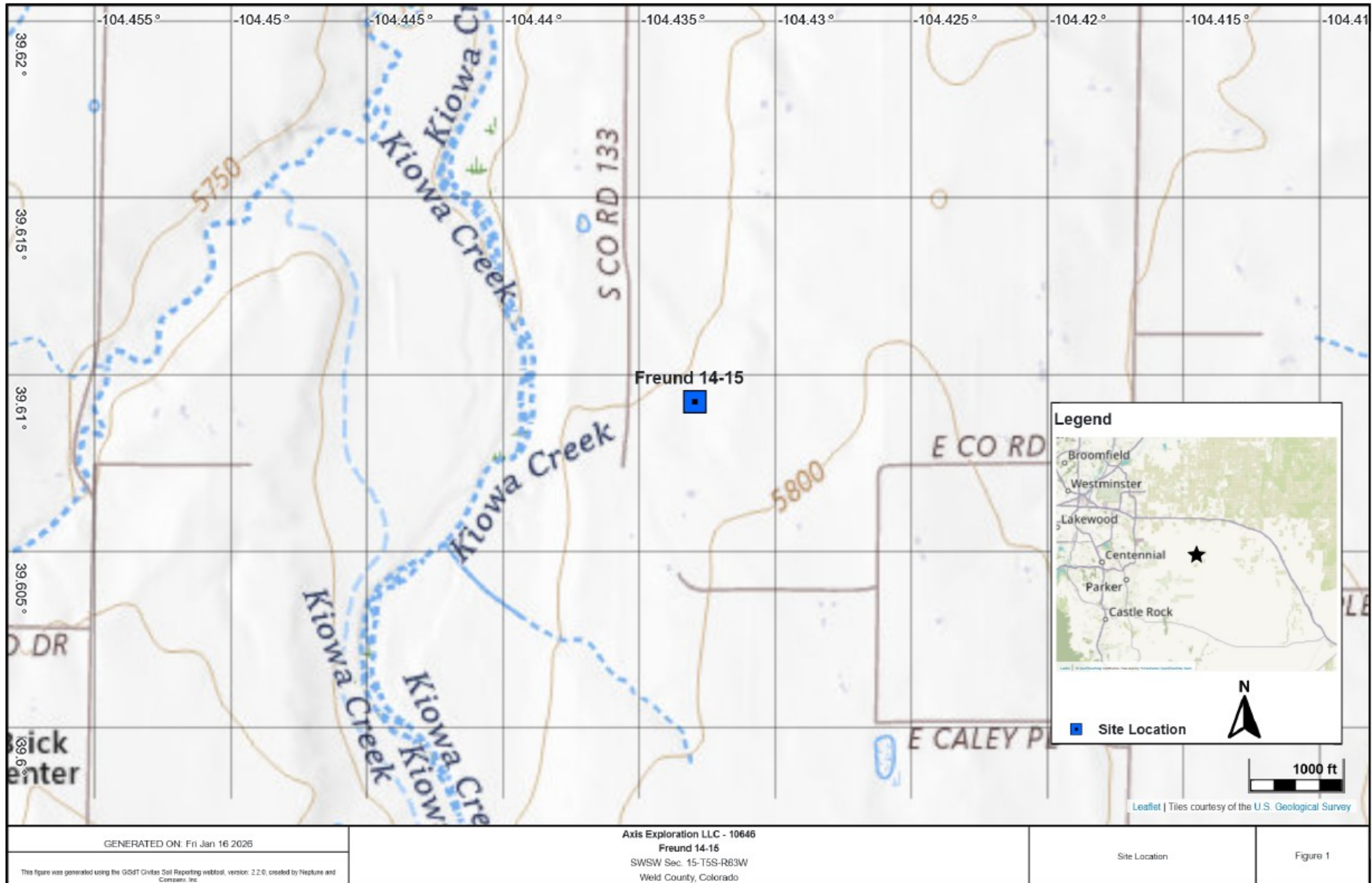
Sample ID: 14-15FLB01@3 Location: 39.60919756, -104.43317598
Depth (ft): 3



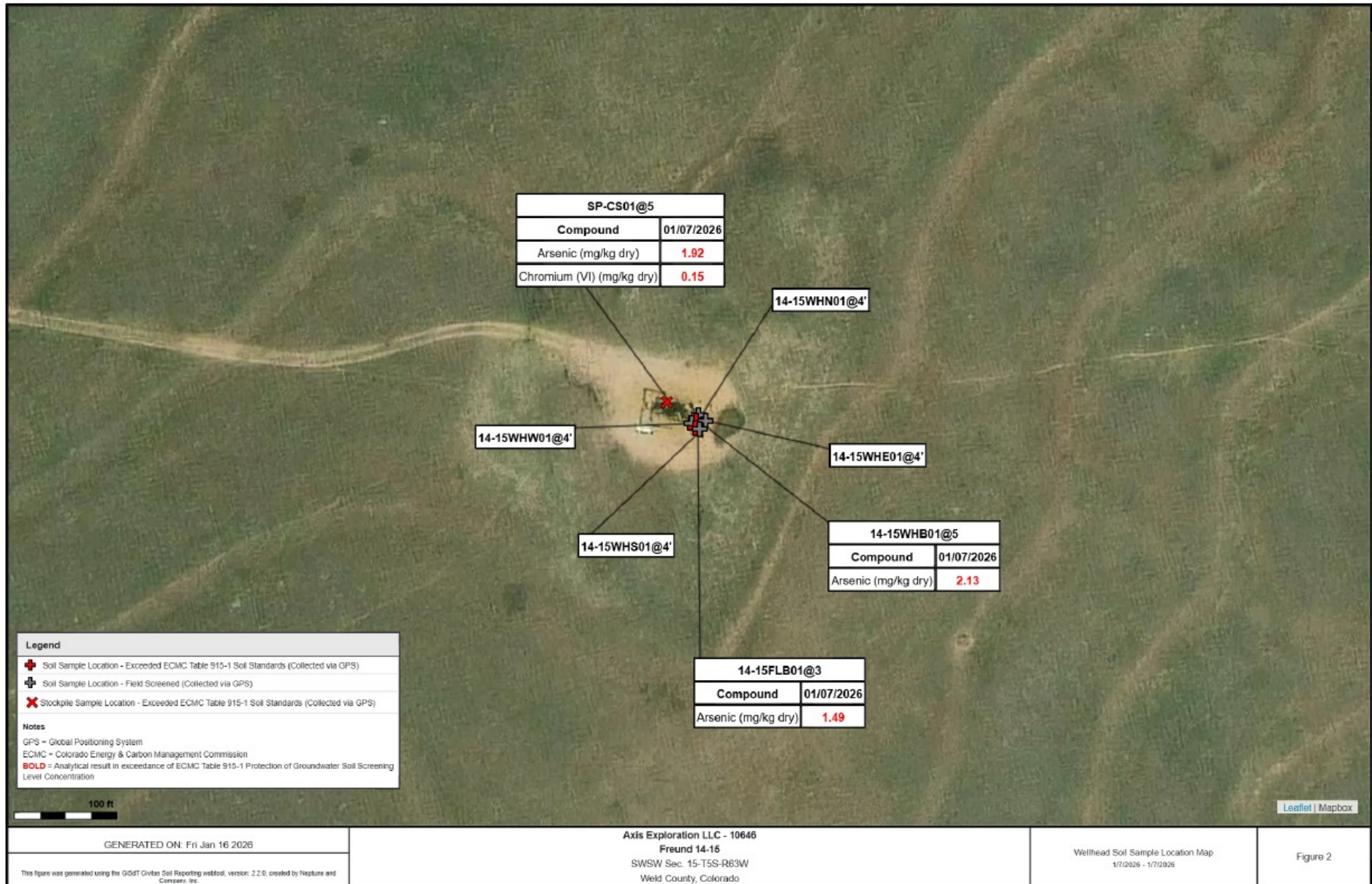
Sample ID: SP-CS01@5 Location: 39.60924313, -104.43324223	
Depth (ft): 5	
	

Sample ID: 14-15FLB02@3 Location: 39.60928613, -104.4339138	
Depth (ft): 3	
	

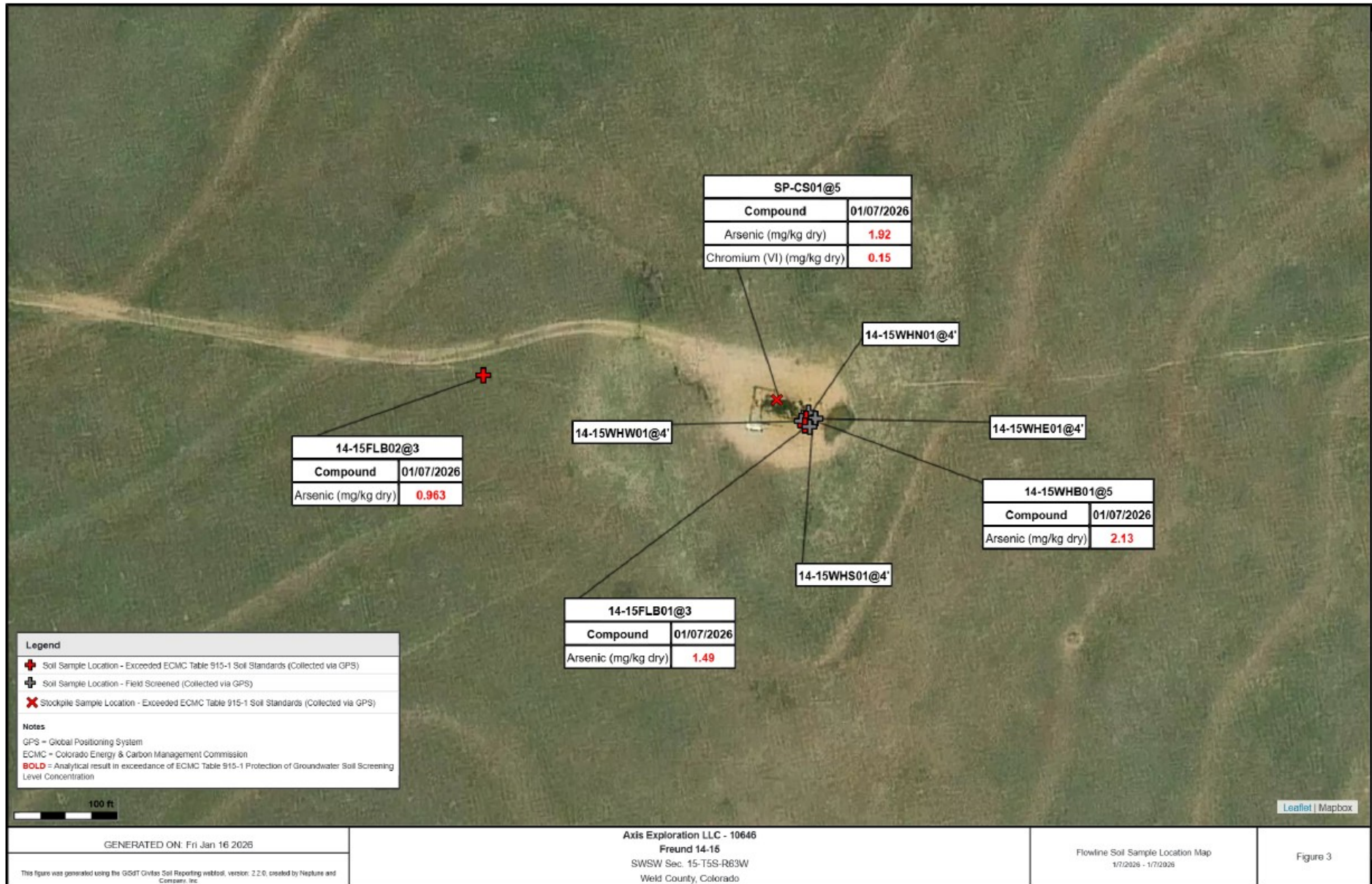
FIGURES



This report was generated using the GiSDT Civitas Soil Reporting webtool, Version 2.2.0, created by Neptune and Company, Inc.



This report was generated using the GiSDT Civitas Soil Reporting webtool, Version 2.2.0, created by Neptune and Company, Inc.



This report was generated using the GiSDT Civitas Soil Reporting webtool, Version 2.2.0, created by Neptune and Company, Inc.

TABLES

TABLE 1
Soil Sample Locations
Freund 14-15

Soil Sample Location	Depth (ft)	Date	PID Reading (ppm)	Latitude	Longitude	Lab (Y/N)	PDOP	Excavated (Y/N)
FLOWLINE								
14-15FLB01@3	3	01/07/26	0	39.609204	-104.4331859	Y	1.4	N
14-15FLB02@3	3	01/07/26	0	39.60929257	-104.4339238	Y	0.8	N
WELLHEAD								
14-15WHB01@5	5	01/07/26	0	39.60921488	-104.4331839	Y	1.4	N
14-15WHE01@4	4	01/07/26	0	39.60921608	-104.4331631	N	1.1	N
14-15WHN01@4	4	01/07/26	0	39.60922606	-104.4331798	N	0.9	N
14-15WHS01@4	4	01/07/26	0	39.60920028	-104.4331759	N	1.2	N
14-15WHW01@4	4	01/07/26	0	39.60921247	-104.4331947	N	1.5	N
SP-CS01@5	5	01/07/26	0	39.60924957	-104.4332522	Y	0.9	N

Notes:

- PID = Photoionization Detector
- ppm = parts per million
- GPS = Global Positioning System
- PDOP = Position Dilution of Precision

TABLE 2
VOCs SUMMARY TABLE
Freund 14-15

Soil Sample Location	Date Sampled	Depth (ft)	Benzene mg/kg	Toluene mg/kg	Ethylbenzene mg/kg	Total Xylenes mg/kg	Naphthalene mg/kg	TVPH-GRO mg/kg	TEPH-DRO mg/kg	TEPH-ORO mg/kg	1,2,4-TMB mg/kg	1,3,5-TMB mg/kg
SITE												
GSSL (1)			0.0026	0.69	0.78	9.9	0.0038	500			0.0081	0.0087
RSSL (2)			1.2	490	5.8	58	2	500			30	27
14-15FLB01@3	01/07/26	3	<0.002	<0.002	<0.002	<0.002	<0.002	<0.212	48.2	559	<0.002	<0.002
14-15FLB02@3	01/07/26	3	<0.002	<0.002	<0.002	<0.002	<0.002	<0.206	<25.9	<103	<0.002	<0.002
14-15WHB01@5	01/07/26	5	<0.002	<0.002	<0.002	<0.002	<0.002	<0.211	<26.9	<108	<0.002	<0.002
SP-CS01@5	01/07/26	5	<0.002	<0.002	<0.002	<0.002	<0.002	<0.207	51.8	186	<0.002	<0.002

VOCs = Volatile Organic Compounds

(1) Standards for soil are taken from ECMC Table 915-1 Organic Compounds in Soils - Protection of Groundwater Soil Screening Level Concentrations (Effective January 15 2021)

(2) Standards for soil are taken from ECMC Table 915-1: Organic Compounds in Soils - Residential Soil Screening Level Concentrations (Effective January 15, 2021)

ECMC = Energy and Carbon Management Commission

(<) = Sample result is less than the indicated sample-specific laboratory reporting limit

mg/kg = milligrams per kilogram

TVPH-GRO = Total Volatile Petroleum Hydrocarbons - Gasoline Range Organics

TEPH-DRO = Total Extractable Petroleum Hydrocarbons - Diesel Range Organics

TEPH-ORO = Total Extractable Petroleum Hydrocarbons - Oil Range Organics

1,2,4-TMB = 1,2,4 - Trimethylbenzene

1,3,5-TMB = 1,3,5 - Trimethylbenzene

BOLD = Analytical Result is in exceedance of GSSL

NA = Not Analyzed

**TABLE 3
PAHs SUMMARY TABLE**

Freund 14-15

Soil Sample Location	Date Sampled	Depth (ft)	Acenaphthene mg/kg	Anthracene mg/kg	Benzo(a)A mg/kg	Benzo(b)F mg/kg	Benzo(k)F mg/kg	Benzo(a)P mg/kg	Chrysene mg/kg	D(a,h)A mg/kg	Fluoranthene mg/kg	Fluorene mg/kg	1,2,3-CD mg/kg	1-M mg/kg	2-M mg/kg	Pyrene mg/kg
SITE																
GSSL (1)			0.55	5.8	0.011	0.3	2.9	0.24	9	0.096	8.9	0.54	0.98	0.006	0.019	1.3
RSSL (2)			360	1800	1.1	1.1	11	0.11	110	0.11	240	240	1.1	18	24	180
14-15FLB01@3	01/07/26	3	<0.021	<0.021	<0.005	<0.021	<0.021	<0.021	<0.021	<0.021	<0.021	<0.021	<0.021	0.003	0.003	<0.021
14-15FLB02@3	01/07/26	3	<0.021	<0.021	<0.005	<0.021	<0.021	<0.021	<0.021	<0.021	<0.021	<0.021	<0.021	<0.002	<0.002	<0.021
14-15WHB01@5	01/07/26	5	<0.021	<0.021	<0.005	<0.021	<0.021	<0.021	<0.021	<0.021	<0.021	<0.021	<0.021	<0.002	<0.002	<0.021
SP-CS01@5	01/07/26	5	<0.021	<0.021	<0.005	<0.021	<0.021	<0.021	<0.021	<0.021	<0.021	<0.021	<0.021	<0.002	<0.002	<0.021

PAHs = Polycyclic Aromatic Hydrocarbons

(1) Standards for soil are taken from ECMC Table 915-1 Organic Compounds in Soils - Protection of Groundwater Soil Screening Level Concentrations (Effective January 15 2021)

(2) Standards for soil are taken from ECMC Table 915-1: Organic Compounds in Soils - Residential Soil Screening Level Concentrations (Effective January 15, 2021)

ECMC = Energy and Carbon Management Commission

(<) = Sample result is less than the indicated sample-specific laboratory reporting limit

mg/kg = milligrams per kilogram

Benzo(a)A = Benzo(a)Anthracene

Benzo(b)F = Benzo(b)Fluoranthene

Benzo(k)F = Benzo(k)Fluoranthene

Benzo(a)P = Benzo(a)Pyrene

D (a,h) A = Dibenz(a,h)Anthracene

1,2,3-CD = Indeno(1,2,3-cd)Pyrene

1-M = 1-Methylnaphthalene

2-M = 2-Methylnaphthalene

BOLD = Analytical Result is in exceedance of GSSL

NA = Not Analyzed

TABLE 4
SOIL ANALYTICAL RESULTS SUMMARY - METALS
Freund 14-15

Soil Sample Location	Date Sampled	Depth (ft)	Arsenic mg/kg	Barium mg/kg	Cadmium mg/kg	Chromium (VI) mg/kg	Copper mg/kg	Lead mg/kg	Nickel mg/kg	Selenium mg/kg	Silver mg/kg	Zinc mg/kg
SITE												
GSSL (1)			0.29	82	0.38	0.00067	46	14	26	0.26	0.8	370
RSSL (2)			0.68	15000	71	0.3	3100	400	1500	390	390	23000
14-15FLB01@3	01/07/26	3	1.49	<58.7	<0.272	<0.21	<32.9	<10	<18.6	<0.176	<0.573	<265
14-15FLB02@3	01/07/26	3	0.963	<59.3	<0.275	<0.2	<33.3	<10.1	<18.8	<0.178	<0.578	<267
14-15WHB01@5	01/07/26	5	2.13	<56.5	<0.262	<0.22	<31.7	<9.64	<17.9	<0.169	<0.551	<255
SP-CS01@5	01/07/26	5	1.92	<58.4	<0.271	0.15	<32.8	<9.97	<18.5	<0.175	<0.57	<263

1. Standards for soil are taken from ECMC Table 915-1: Metals in Soils - Protection of Groundwater Soil Screening Level Concentrations (Effective January 15, 2021).

2. Standards for soil are taken from ECMC Table 915-1: Metals in Soils - Residential Soil Screening Level Concentrations (Effective January 15, 2021).

ECMC = Energy and Carbon Management Commission

(<) = Sample result is less than the indicated sample-specific laboratory reporting limit

mg/kg = milligrams per kilogram

Bolded values: Concentrations greater than GSSL

Italics = Laboratory method detection limit exceeds the ECMC Table 915-1 Standard

NA = Not Analyzed

TABLE 5
SOIL SUITABILITY RESULTS SUMMARY TABLE
Freund 14-15

Soil Sample Location	Date Sampled	Depth (ft)	Boron (mg/L)	pH	SAR	EC (mmhos/cm)
SITE						
ECMC Soil Suitability for Reclamation (1)			2	6-8.3	<6	<4
14-15FLB01@3	01/07/26	3	<0.106	7.52	0.155	0.0846
14-15FLB02@3	01/07/26	3	<0.103	7.35	0.168	0.0334
14-15WHB01@5	01/07/26	5	0.131	7.79	0.999	0.102
SP-CS01@5	01/07/26	5	<0.105	8.17	0.295	0.241

1. Standards for soil are taken from ECMC Table 915-1: Soil Suitability for Reclamation (Effective January 15 2021).

ECMC = Energy and Carbon Management Commission

(<) = Sample result is less than the indicated sample-specific laboratory reporting limit

mmhos/cm = millimhos per centimeter

mg/L = milligrams per liter

pH = Potential of Hydrogen

SAR = Sodium Adsorbtion Ratio

EC = Electrical Conductivity

Bolded values: Concentration greater than ECMC Table 915-1 cleanup concentration

[1] "TABLE 6: No groundwater data for site: Freund 14-15"

