

SITE ASSESSMENT REPORT
ALEXANDER FEDERAL H4-2JI

ECMC SPILL TRACKING # 492119 & 492120
ECMC REMEDIATION # 29328

Prepared for:

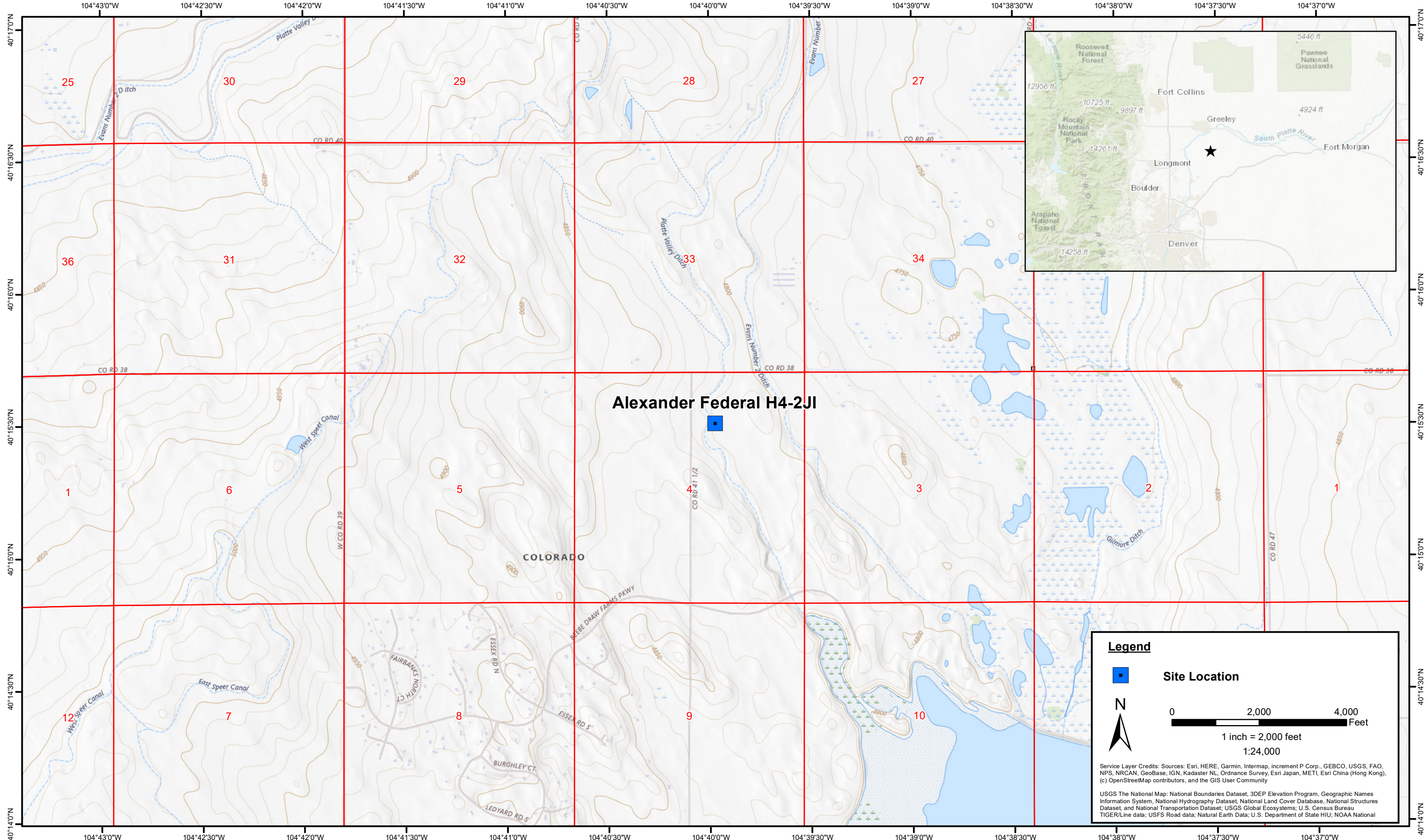


1099 18th Street
Suite 1500
Denver, CO 80202

Prepared by:



4725 Independence Street
Wheat Ridge, CO 80033



DATE:	October 2025
DESIGNED BY:	J. Whritenour
DRAWN BY:	J. Woffinden

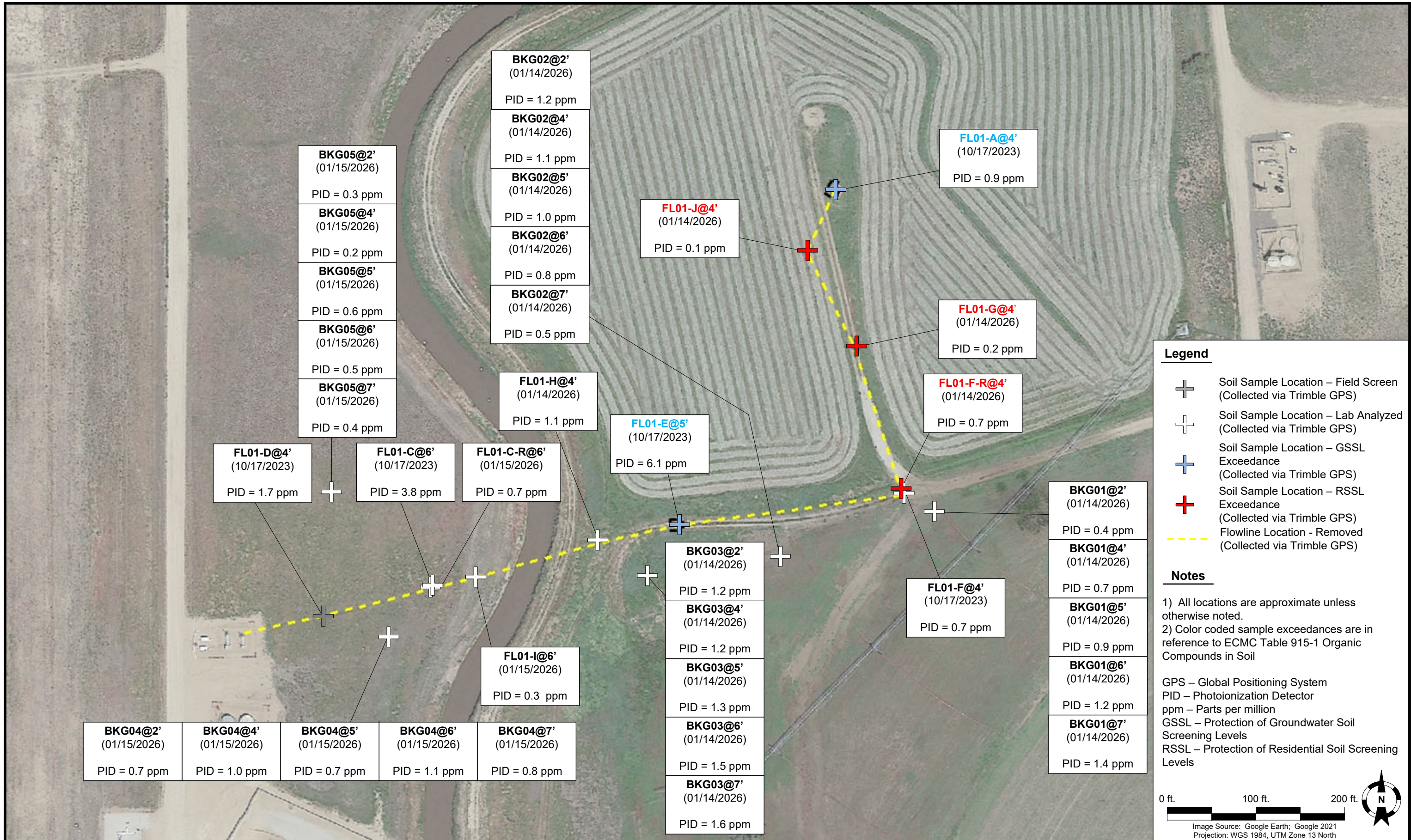


Tasman, Inc.
4725 Independence St.
Wheat Ridge, CO 80033

Noble Energy, Inc - 100322
Alexander Federal H4-2JI
 NWNE Sec. 4-T3N-R65W
 Weld County, Colorado

Site Location Map

Figure
1



Legend

- ⊕ Soil Sample Location – Field Screen (Collected via Trimble GPS)
- ⊕ Soil Sample Location – Lab Analyzed (Collected via Trimble GPS)
- ⊕ Soil Sample Location – GSSL Exceedance (Collected via Trimble GPS)
- ⊕ Soil Sample Location – RSSL Exceedance (Collected via Trimble GPS)
- - - Flowline Location - Removed (Collected via Trimble GPS)

Notes

- 1) All locations are approximate unless otherwise noted.
- 2) Color coded sample exceedances are in reference to ECMC Table 915-1 Organic Compounds in Soil

GPS – Global Positioning System
 PID – Photoionization Detector
 ppm – Parts per million
 GSSL – Protection of Groundwater Soil Screening Levels
 RSSL – Protection of Residential Soil Screening Levels

0 ft. 100 ft. 200 ft.

Image Source: Google Earth; Google 2021
 Projection: WGS 1984, UTM Zone 13 North

DATE: January 15, 2026

DESIGNED BY: J. Whritenour

DRAWN BY: J. Webster

Tasman, Inc.
 4725 Independence Street
 Wheat Ridge, CO 80033

Noble Energy, Inc. – 100322
Alexander Federal H4-2JI Flowline
 NWSE, Section 11, Township 3 North, Range 65 West
 Weld County, Colorado

SOIL SAMPLE LOCATION MAP (FLOWLINE)

FIGURE 2



DATE: January 15, 2026

DESIGNED BY: J. Whritenour

DRAWN BY: J. Webster

Tasman, Inc.
 4725 Independence Street
 Wheat Ridge, CO 80033

Noble Energy, Inc. – 100322
Alexander Federal H4-2JI Flowline
 NWSE, Section 11, Township 3 North, Range 65 West
 Weld County, Colorado

SOIL SAMPLE LOCATION MAP (EXCAVATION A)

FIGURE 3



Legend

- Soil Sample Location – Lab Analyzed (Collected via Trimble GPS)
- Soil Sample Location – GSSL Exceedance (Collected via Trimble GPS)
- Flowline Location - Removed (Collected via Trimble GPS)
- Excavation Extent (Collected via Trimble GPS)

Notes

- 1) All locations are approximate unless otherwise noted.
- 2) Color coded sample exceedances are in reference to ECMC Table 915-1 Organic Compounds in Soil

GPS – Global Positioning System
 PID – Photoionization Detector
 ppm – Parts per million
 GSSL – Protection of Groundwater Soil Screening Levels

0 ft. 10 ft. 20 ft.

Image Source: Google Earth; Google 2021
 Projection: WGS 1984, UTM Zone 13 North

DATE: January 15, 2026

DESIGNED BY: J. Whritenour

DRAWN BY: J. Webster

Tasman, Inc.
 4725 Independence Street
 Wheat Ridge, CO 80033

Noble Energy, Inc. – 100322
Alexander Federal H4-2JI Flowline
 NWSE, Section 11, Township 3 North, Range 65 West
 Weld County, Colorado

**SOIL SAMPLE
 LOCATION MAP
 (EXCAVATION E)**

**FIGURE
 4**

TABLE 1
FIELD DATA SUMMARY TABLE
NOBLE ENERGY, INC. - 100322
ALEXANDER FEDERAL H4-2JI, WELD COUNTY, COLORADO
REM # 29328



Sample ID	Sample Date	Depth (ft. bgs)	GPS Data ¹ Latitude/Longitude		PDOP Value	VOC Concentration ² (ppm)
FL01-A@4'	10/17/2023	4	40.259572	-104.665508	0.8	0.9
FL01-C@6'	10/17/2023	6	40.258348	-104.667148	1.3	3.8
FL01-D@4'	10/17/2023	4	40.258258	-104.667582	0.9	1.7
FL01-E@5'	10/17/2023	5	40.258539	-104.666148	1.0	6.1
FL01-F@4'	10/17/2023	4	40.258632	-104.665238	0.9	0.7
WH01@6 ⁽³⁾	05/02/2025	6	40.259578	-104.665519	NC	0.0
WH01-S@4 ⁽³⁾	05/02/2024	4	40.259558	-104.665518	NC	0.0
WH01-W@4 ⁽³⁾	05/02/2024	4	40.259575	-104.665538	NC	0.0
WH01-E@4 ⁽³⁾	05/02/2024	4	40.259579	-104.665498	NC	0.0
WH01-N@4 ⁽³⁾	05/02/2024	4	40.259596	-104.665518	NC	0.0
WH01@6.5 ⁽³⁾	05/02/2024	6.5	40.259578	-104.665519	NC	0.0
FL01-F-R@4'	01/14/2026	4	40.258638	-104.665239	0.9	0.7
FL01-G@4'	01/14/2026	4	40.259090	-104.665423	0.7	0.2
FL01-J@4'	01/14/2026	4	40.259382	-104.665617	0.7	0.1
FL01-H@4'	01/14/2026	4	40.258488	-104.666466	NC	1.1
FL01-I@6'	01/15/2026	6	40.258381	-104.666963	NC	0.3
FL01-C-R@6'	01/15/2026	6	40.258350	-104.667136	0.8	0.7
FS01-A@6'	01/15/2026	6	40.259572	-104.665508	NC	0.6
SS01-A@4'	01/15/2026	4	40.259598	-104.665493	0.7	0.6
SS02-A@4'	01/15/2026	4	40.259567	-104.665489	0.7	1.6
SS03-A@4'	01/15/2026	4	40.259556	-104.665522	0.8	0.6
SS04-A@4'	01/15/2026	4	40.259585	-104.665529	0.8	0.7
FS01-E@7'	01/15/2026	7	40.258539	-104.666143	0.9	0.5
SS01-E@5'	01/15/2026	5	40.258557	-104.666146	NC	0.1
SS02-E@5'	01/15/2026	5	40.258542	-104.666122	0.9	0.3
SS03-E@5'	01/15/2026	5	40.258523	-104.666144	0.8	0.4
SS04-E@5'	01/15/2026	5	40.258539	-104.666175	NC	0.5
BKG01@4 ⁽³⁾	04/15/2025	4	40.259274	-104.666008	NC	0.0
BKG01@6 ⁽³⁾	04/15/2025	6	40.259274	-104.666008	NC	0.0
BKG02@4 ⁽³⁾	04/15/2025	4	40.259393	-104.665031	NC	0.0
BKG02@6 ⁽³⁾	04/15/2025	6	40.259393	-104.665031	NC	0.0
BKG03@4 ⁽³⁾	04/15/2025	4	40.259842	-104.665102	NC	0.0
BKG03@6 ⁽³⁾	04/15/2025	6	40.259842	-104.665102	NC	0.0
BKG01@2'	01/14/2026	2	40.258580	-104.665114	0.8	0.4
BKG01@4'	01/14/2026	4	40.258580	-104.665114	0.8	0.7
BKG01@5'	01/14/2026	5	40.258580	-104.665114	0.8	0.9
BKG01@6'	01/14/2026	6	40.258580	-104.665114	0.8	1.2
BKG01@7'	01/14/2026	7	40.258580	-104.665114	0.8	1.4
BKG02@2'	01/14/2026	2	40.258444	-104.665734	0.8	1.2
BKG02@4'	01/14/2026	4	40.258444	-104.665734	0.8	1.1
BKG02@5'	01/14/2026	5	40.258444	-104.665734	0.8	1.0
BKG02@6'	01/14/2026	6	40.258444	-104.665734	0.8	0.8
BKG02@7'	01/14/2026	7	40.258444	-104.665734	0.8	0.5
BKG03@2'	01/14/2026	2	40.258377	-104.666270	0.8	1.2
BKG03@4'	01/14/2026	4	40.258377	-104.666270	0.8	1.2
BKG03@5'	01/14/2026	5	40.258377	-104.666270	0.8	1.3
BKG03@6'	01/14/2026	6	40.258377	-104.666270	0.8	1.5

TABLE 1
FIELD DATA SUMMARY TABLE
NOBLE ENERGY, INC. - 100322
ALEXANDER FEDERAL H4-2JI, WELD COUNTY, COLORADO
REM # 29328



Sample ID	Sample Date	Depth (ft. bgs)	GPS Data ¹		PDOP Value	VOC Concentration ² (ppm)
			Latitude	Longitude		
BKG03@7'	01/14/2026	7	40.258377	-104.666270	0.8	1.6
BKG04@2'	01/15/2026	2	40.258195	-104.667307	0.8	0.7
BKG04@4'	01/15/2026	4	40.258195	-104.667307	0.8	1.0
BKG04@5'	01/15/2026	5	40.258195	-104.667307	0.8	0.7
BKG04@6'	01/15/2026	6	40.258195	-104.667307	0.8	1.1
BKG04@7'	01/15/2026	7	40.258195	-104.667307	0.8	0.8
BKG05@2'	01/15/2026	2	40.258639	-104.667544	0.7	0.3
BKG05@4'	01/15/2026	4	40.258639	-104.667544	0.7	0.2
BKG05@5'	01/15/2026	5	40.258639	-104.667544	0.7	0.6
BKG05@6'	01/15/2026	6	40.258639	-104.667544	0.7	0.5
BKG05@7'	01/15/2026	7	40.258639	-104.667544	0.7	0.4

Notes:

1. Global Positioning System (GPS) data is provided in decimal degrees using North American Datum (NAD) 83 UTM Zone 13 North.
2. Volatile organic compound (VOC) concentrations are measured in the field using a photoionization detector (PID).
3. Sample collected by a third party Chevron business partner.

PDOP = Position Dilution of Precision

ppm = Parts per million

ft. = Feet

bgs = Below ground surface

NC = Not collected

NA = Not analyzed

Source material characterization sample, excavated and transported off site for disposal.

Material excavated and transported off site for disposal.

TABLE 2
SUMMARY OF VOLATILE ORGANIC SOIL CHEMISTRY DATA
NOBLE ENERGY, INC. - 100322
ALEXANDER FEDERAL H4-2JI, WELD COUNTY, COLORADO
REM # 29328



Sample ID	Sample Date	Depth (ft. bgs)	Benzene (mg/kg)	Toluene (mg/kg)	Ethyl-Benzene (mg/kg)	Xylenes (mg/kg)	1,2,4-Trimethyl-Benzene (mg/kg)	1,3,5-Trimethyl-Benzene (mg/kg)	Naphthalene (mg/kg)	TPH (mg/kg)	TPH GRO (mg/kg)	TPH DRO (mg/kg)	TPH ORO (mg/kg)
ECMC Table 915-1 Limits (Residential SSL)			1.2	490	5.8	58	30	27	2	500	500**		
ECMC Table 915-1 Limits (Protection of Groundwater SSL)			0.0026	0.69	0.78	9.9	0.0081	0.0087	0.0038	500	500**		
WH01@6.5 ⁽³⁾	05/02/2025	6.5	<0.00200	<0.00200	<0.00200	<0.00200	<0.00200	<0.00200	<0.002	<100	<0.200	<25.0	<100
FL01-F-R@4'	01/14/2026	4	<0.002	<0.002	<0.002	<0.002	<0.002	<0.002	0.047	44.2	<0.211	44.2	<108
FL01-G@4'	01/14/2026	4	<0.002	0.003	<0.002	<0.002	<0.002	<0.002	0.902	77.0	<0.219	77.0	<109
FL01-J@4'	01/14/2026	4	<0.002	<0.002	<0.002	<0.002	<0.002	<0.002	0.064	<109	<0.219	<27.2	<109
FL01-I@6'	01/15/2026	6	RP	RP	RP	RP	RP	RP	RP	RP	RP	RP	RP
FL01-C-R@6'	01/15/2026	6	RP	RP	RP	RP	RP	RP	RP	RP	RP	RP	RP
FS01-A@6'	01/15/2026	6	RP	RP	RP	RP	RP	RP	RP	RP	RP	RP	RP
SS01-A@4'	01/15/2026	4	RP	RP	RP	RP	RP	RP	RP	RP	RP	RP	RP
SS02-A@4'	01/15/2026	4	RP	RP	RP	RP	RP	RP	RP	RP	RP	RP	RP
SS03-A@4'	01/15/2026	4	RP	RP	RP	RP	RP	RP	RP	RP	RP	RP	RP
SS04-A@4'	01/15/2026	4	RP	RP	RP	RP	RP	RP	RP	RP	RP	RP	RP
FS01-E@7'	01/15/2026	7	RP	RP	RP	RP	RP	RP	RP	RP	RP	RP	RP
SS01-E@5'	01/15/2026	5	RP	RP	RP	RP	RP	RP	RP	RP	RP	RP	RP
SS02-E@5'	01/15/2026	5	RP	RP	RP	RP	RP	RP	RP	RP	RP	RP	RP
SS03-E@5'	01/15/2026	5	RP	RP	RP	RP	RP	RP	RP	RP	RP	RP	RP
SS04-E@5'	01/15/2026	5	RP	RP	RP	RP	RP	RP	RP	RP	RP	RP	RP

Notes:

1. **Bold** values exceed the ECMC Table 915-1 limit(s).
2. Red & blue highlighted soil analytical values indicate an exceedance of the referenced soil screening level (SSL).
3. Sample collected by a third party Chevron business partner.
4. ** Summation of GRO+DRO+ORO must be less than 500 mg/kg.
5. Samples are reported as dry weight unless otherwise indicated in the laboratory PDF report(s).

ECMC = Energy and Carbon Management Commission

(<) = Analytical result is less than the indicated laboratory reporting limit.

TPH-GRO = Total petroleum hydrocarbons - gasoline range organics

TPH-DRO = Total petroleum hydrocarbons - diesel range organics

TPH-ORO = Total petroleum hydrocarbons - oil range organics

mg/kg = Milligrams per kilogram

ft. = Feet

bgs = Below ground surface

NA = Not analyzed

RP = Result Pending

Source material characterization sample, excavated and transported off site for disposal.

Material excavated and transported off site for disposal.

TABLE 3
SUMMARY OF POLYCYCLIC AROMATIC HYDROCARBON SOIL CHEMISTRY DATA
NOBLE ENERGY, INC. - 100322
ALEXANDER FEDERAL H4-2JI, WELD COUNTY, COLORADO
REM # 29328



Sample ID	Sample Date	Depth (ft. bgs)	Acenaphthene (mg/kg)	Anthracene (mg/kg)	Benzo (a) Anthracene (mg/kg)	Benzo (a) Pyrene (mg/kg)	Benzo (b) Fluoranthene (mg/kg)	Benzo (k) Fluoranthene (mg/kg)	Chrysene (mg/kg)	Dibenzo (a,h) Anthracene (mg/kg)	Fluoranthene (mg/kg)	Fluorene (mg/kg)	Indeno (1,2,3-cd) Pyrene (mg/kg)	Pyrene (mg/kg)	1-Methyl - Naphthalene (mg/kg)	2-Methyl - Naphthalene (mg/kg)
ECMC Table 915-1 Limits (Residential SSL)			360	1800	1.1	0.11	1.1	11	110	0.11	240	240	1.1	180	18	24
ECMC Table 915-1 Limits (Protection of Groundwater SSL)			0.55	5.8	0.011	0.24	0.3	2.9	9	0.096	8.9	0.54	0.98	1.3	0.006	0.019
WH01@6.5 ⁽³⁾	05/02/2025	6.5	<0.020	<0.020	<0.005	<0.020	<0.020	<0.020	<0.020	<0.020	<0.020	<0.020	<0.020	<0.020	<0.002	<0.002
FL01-F-R@4'	01/14/2026	4	0.096	0.847	0.534	0.372	0.314	0.173	0.888	0.050	1.66	0.154	0.197	1.01	0.006	0.010
FL01-G@4'	01/14/2026	4	1.36	2.22	2.54	1.66	1.47	0.704	2.53	0.243	6.84	2.07	0.787	4.79	0.171	0.314
FL01-J@4'	01/14/2026	4	0.102	0.168	0.201	0.133	0.122	0.066	0.196	0.024	0.553	0.158	0.070	0.385	0.013	0.023
FL01-I@6'	01/15/2026	6	RP	RP	RP	RP	RP	RP	RP	RP	RP	RP	RP	RP	RP	RP
FL01-C-R@6'	01/15/2026	6	RP	RP	RP	RP	RP	RP	RP	RP	RP	RP	RP	RP	RP	RP
FS01-A@6'	01/15/2026	6	RP	RP	RP	RP	RP	RP	RP	RP	RP	RP	RP	RP	RP	RP
SS01-A@4'	01/15/2026	4	RP	RP	RP	RP	RP	RP	RP	RP	RP	RP	RP	RP	RP	RP
SS02-A@4'	01/15/2026	4	RP	RP	RP	RP	RP	RP	RP	RP	RP	RP	RP	RP	RP	RP
SS03-A@4'	01/15/2026	4	RP	RP	RP	RP	RP	RP	RP	RP	RP	RP	RP	RP	RP	RP
SS04-A@4'	01/15/2026	4	RP	RP	RP	RP	RP	RP	RP	RP	RP	RP	RP	RP	RP	RP
FS01-E@7'	01/15/2026	7	RP	RP	RP	RP	RP	RP	RP	RP	RP	RP	RP	RP	RP	RP
SS01-E@5'	01/15/2026	5	RP	RP	RP	RP	RP	RP	RP	RP	RP	RP	RP	RP	RP	RP
SS02-E@5'	01/15/2026	5	RP	RP	RP	RP	RP	RP	RP	RP	RP	RP	RP	RP	RP	RP
SS03-E@5'	01/15/2026	5	RP	RP	RP	RP	RP	RP	RP	RP	RP	RP	RP	RP	RP	RP
SS04-E@5'	01/15/2026	5	RP	RP	RP	RP	RP	RP	RP	RP	RP	RP	RP	RP	RP	RP

Notes:

- Bold** values exceed the ECMC Table 915-1 limit(s).
- Red & blue highlighted soil analytical values indicate an exceedance of the referenced soil screening level (SSL).
- Sample collected by a third party Chevron business partner.
- * Indicates laboratory minimum detection limit in excess of SSL.
- Samples are reported as dry weight unless otherwise indicated in the laboratory PDF report(s).

ECMC = Energy and Carbon Management Commission

(<) = Analytical result is less than the indicated laboratory reporting limit.

mg/kg = Milligrams per kilogram

ft. = Feet

bgs = Below ground surface

NA = Not analyzed

RP = Result Pending

Source material characterization sample, excavated and transported off site for disposal.

Material excavated and transported off site for disposal.

TABLE 4
SUMMARY OF SOIL SUITABILITY FOR RECLAMATION
NOBLE ENERGY, INC. - 100322
ALEXANDER FEDERAL H4-2JI, WELD COUNTY, COLORADO
REM # 29328



Sample ID	Sample Date	Depth (ft. bgs)	pH (Standard Units)	EC (mmhos/cm)	SAR (Standard Units)	Boron (mg/L)
ECMC Table 915-1 Soil Suitability Limits			6 - 8.3	<4	<6	2
WH01@6.5 ⁽³⁾	05/02/2025	6.5	8.28	0.797	2.09	0.278
FL01-F-R@4'	01/14/2026	4	RP	RP	RP	RP
FL01-G@4'	01/14/2026	4	RP	RP	RP	RP
FL01-J@4'	01/14/2026	4	RP	RP	RP	RP
FL01-I@6'	01/15/2026	6	RP	RP	RP	RP
FL01-C-R@6'	01/15/2026	6	RP	RP	RP	RP
FS01-A@6'	01/15/2026	6	RP	RP	RP	RP
SS01-A@4'	01/15/2026	4	RP	RP	RP	RP
SS02-A@4'	01/15/2026	4	RP	RP	RP	RP
SS03-A@4'	01/15/2026	4	RP	RP	RP	RP
SS04-A@4'	01/15/2026	4	RP	RP	RP	RP
FS01-E@7'	01/15/2026	7	RP	RP	RP	RP
SS01-E@5'	01/15/2026	5	RP	RP	RP	RP
SS02-E@5'	01/15/2026	5	RP	RP	RP	RP
SS03-E@5'	01/15/2026	5	RP	RP	RP	RP
SS04-E@5'	01/15/2026	5	RP	RP	RP	RP
BKG01@4 ⁽³⁾	04/15/2025	4	7.72	0.217	0.849	<2.00
BKG01@6 ⁽³⁾	04/15/2025	6	7.86	0.171	0.652	<2.00
BKG02@4 ⁽³⁾	04/15/2025	4	7.45	0.162	0.558	<2.00
BKG02@6 ⁽³⁾	04/15/2025	6	8.47	0.372	0.444	<2.00
BKG03@4 ⁽³⁾	04/15/2025	4	8.12	1.04	3.68	<2.00
BKG03@6 ⁽³⁾	04/15/2025	6	8.15	0.822	3.37	<2.00
BKG01@2'	01/14/2026	2	RP	RP	RP	RP
BKG01@4'	01/14/2026	4	RP	RP	RP	RP
BKG01@5'	01/14/2026	5	RP	RP	RP	RP
BKG01@6'	01/14/2026	6	RP	RP	RP	RP
BKG01@7'	01/14/2026	7	RP	RP	RP	RP
BKG02@2'	01/14/2026	2	RP	RP	RP	RP
BKG02@4'	01/14/2026	4	RP	RP	RP	RP
BKG02@5'	01/14/2026	5	RP	RP	RP	RP
BKG02@6'	01/14/2026	6	RP	RP	RP	RP
BKG02@7'	01/14/2026	7	RP	RP	RP	RP
BKG03@2'	01/14/2026	2	RP	RP	RP	RP
BKG03@4'	01/14/2026	4	RP	RP	RP	RP
BKG03@5'	01/14/2026	5	RP	RP	RP	RP
BKG03@6'	01/14/2026	6	RP	RP	RP	RP

TABLE 4
SUMMARY OF SOIL SUITABILITY FOR RECLAMATION
NOBLE ENERGY, INC. - 100322
ALEXANDER FEDERAL H4-2JI, WELD COUNTY, COLORADO
REM # 29328



Sample ID	Sample Date	Depth (ft. bgs)	pH (Standard Units)	EC (mmhos/cm)	SAR (Standard Units)	Boron (mg/L)
ECMC Table 915-1 Soil Suitability Limits			6 - 8.3	<4	<6	2
BKG03@7'	01/14/2026	7	RP	RP	RP	RP
BKG04@2'	01/15/2026	2	RP	RP	RP	RP
BKG04@4'	01/15/2026	4	RP	RP	RP	RP
BKG04@5'	01/15/2026	5	RP	RP	RP	RP
BKG04@6'	01/15/2026	6	RP	RP	RP	RP
BKG04@7'	01/15/2026	7	RP	RP	RP	RP
BKG05@2'	01/15/2026	2	RP	RP	RP	RP
BKG05@4'	01/15/2026	4	RP	RP	RP	RP
BKG05@5'	01/15/2026	5	RP	RP	RP	RP
BKG05@6'	01/15/2026	6	RP	RP	RP	RP
BKG05@7'	01/15/2026	7	RP	RP	RP	RP
Maximum Background Concentration			8.47	-	-	-

Notes:

1. **Bold** faced values exceed the ECMC Table 915-1 limit(s), but are within background concentrations.
2. **Bold** faced values exceed the ECMC Table 915-1 limit(s) and native background concentrations.
3. Sample collected by a third party Chevron business partner.
4. Brown highlighted soil analytical values indicate a regulatory exceedance.

ECMC = Energy and Carbon Management Commission

(<) = Analytical result is less than the indicated laboratory reporting limit.

mg/L = Milligrams per liter

ft. = Feet

bgs = Below ground surface

NA = Not analyzed

EC = Electrical conductivity

SAR = Sodium adsorption ratio

RP = Result Pending

mmhos/cm = Millimhos per centimeter

Source material characterization sample, excavated and transported off site for disposal.

Material excavated and transported off site for disposal.

TABLE 5
SUMMARY OF METALS IN SOIL CHEMISTRY DATA
NOBLE ENERGY, INC. - 100322
ALEXANDER FEDERAL H4-2JI, WELD COUNTY, COLORADO
REM # 29328



Sample ID	Sample Date	Depth (ft. bgs)	Arsenic (mg/kg)	Barium (mg/kg)	Cadmium (mg/kg)	Chromium (VI) ⁶ (mg/kg)	Copper (mg/kg)	Lead (mg/kg)	Nickel (mg/kg)	Selenium (mg/kg)	Silver (mg/kg)	Zinc (mg/kg)
ECMC Table 915-1 Limits (Residential SSL)			0.68	15000	71	0.3	3100	400	1500	390	390	23000
ECMC Table 915-1 Limits (Protection of Groundwater SSL)			0.29	82	0.38	0.00067	46	14	26	0.26	0.8	370
WH01@6.5 ⁽³⁾	05/02/2025	6.5	2.93	<80.6	<0.374	<0.5	<45.2	15.5	<25.6	<0.256	<0.787	<364
FL01-F-R@4'	01/14/2026	4	1.76	70.6	<0.282	RP	<34.1	<10.4	<19.3	<0.183	<0.594	<275
FL01-G@4'	01/14/2026	4	2.15	89.4	<0.284	RP	<34.3	<10.5	<19.4	<0.184	<0.597	<276
FL01-J@4'	01/14/2026	4	2.58	95.7	<0.283	RP	<34.3	<10.4	<19.4	<0.183	<0.596	<276
FL01-I@6'	01/15/2026	6	RP	RP	RP	RP	RP	RP	RP	RP	RP	RP
FL01-C-R@6'	01/15/2026	6	RP	RP	RP	RP	RP	RP	RP	RP	RP	RP
FS01-A@6'	01/15/2026	6	RP	RP	RP	RP	RP	RP	RP	RP	RP	RP
SS01-A@4'	01/15/2026	4	RP	RP	RP	RP	RP	RP	RP	RP	RP	RP
SS02-A@4'	01/15/2026	4	RP	RP	RP	RP	RP	RP	RP	RP	RP	RP
SS03-A@4'	01/15/2026	4	RP	RP	RP	RP	RP	RP	RP	RP	RP	RP
SS04-A@4'	01/15/2026	4	RP	RP	RP	RP	RP	RP	RP	RP	RP	RP
FS01-E@7'	01/15/2026	7	RP	RP	RP	RP	RP	RP	RP	RP	RP	RP
SS01-E@5'	01/15/2026	5	RP	RP	RP	RP	RP	RP	RP	RP	RP	RP
SS02-E@5'	01/15/2026	5	RP	RP	RP	RP	RP	RP	RP	RP	RP	RP
SS03-E@5'	01/15/2026	5	RP	RP	RP	RP	RP	RP	RP	RP	RP	RP
SS04-E@5'	01/15/2026	5	RP	RP	RP	RP	RP	RP	RP	RP	RP	RP
BKG01@4 ⁽³⁾	04/15/2025	4	0.940	94.7	<0.200	<0.30	8.81	6.76	9.05	<0.260	0.0287	36.2
BKG01@6 ⁽³⁾	04/15/2025	6	0.902	70.0	<0.200	<0.30	2.92	5.11	3.18	<0.260	0.0223	10.9
BKG02@4 ⁽³⁾	04/15/2025	4	0.935	61.8	<0.200	<0.30	3.09	4.10	3.57	<0.260	0.0228	10.0
BKG02@6 ⁽³⁾	04/15/2025	6	1.40	97.2	<0.200	<0.30	3.81	6.17	6.05	<0.260	0.0232	13.6
BKG03@4 ⁽³⁾	04/15/2025	4	1.41	103	<0.200	<0.30	4.68	7.85	6.08	<0.260	0.0464	14.3
BKG03@6 ⁽³⁾	04/15/2025	6	1.53	170	<0.200	<0.30	5.06	10.4	6.97	<0.260	0.0348	16.6
BKG01@2'	01/14/2026	2	1.80	64.7	<0.285	RP	<34.5	<10.5	<19.5	0.213	<0.599	<277
BKG01@4'	01/14/2026	4	2.06	96.1	<0.277	RP	<33.5	<10.2	<18.9	<0.179	<0.583	<0.269
BKG01@5'	01/14/2026	5	1.93	84.1	<0.280	RP	<33.9	<10.3	<19.2	0.181	<0.590	<273
BKG01@6'	01/14/2026	6	1.99	79.2	<0.281	RP	<34.0	<10.3	<19.2	0.194	<0.591	<273
BKG01@7'	01/14/2026	7	1.85	87.9	<0.263	RP	<31.8	<9.69	<18.0	<0.170	<0.554	<256
BKG02@2'	01/14/2026	2	3.30	126	<0.291	RP	<35.3	<10.7	<19.9	0.205	<0.613	<284
BKG02@4'	01/14/2026	4	3.03	109	<0.274	RP	<33.2	<10.1	<18.7	0.197	<0.577	<267
BKG02@5'	01/14/2026	5	5.97	179	<0.293	RP	<35.5	12.0	<20.1	0.312	<0.617	<285
BKG02@6'	01/14/2026	6	4.81	158	<0.278	RP	<33.6	<10.2	<19.0	0.222	<0.585	<271

TABLE 5
SUMMARY OF METALS IN SOIL CHEMISTRY DATA
NOBLE ENERGY, INC. - 100322
ALEXANDER FEDERAL H4-2JI, WELD COUNTY, COLORADO
REM # 29328



Sample ID	Sample Date	Depth (ft. bgs)	Arsenic (mg/kg)	Barium (mg/kg)	Cadmium (mg/kg)	Chromium (VI) ⁶ (mg/kg)	Copper (mg/kg)	Lead (mg/kg)	Nickel (mg/kg)	Selenium (mg/kg)	Silver (mg/kg)	Zinc (mg/kg)
ECMC Table 915-1 Limits (Residential SSL)			0.68	15000	71	0.3	3100	400	1500	390	390	23000
ECMC Table 915-1 Limits (Protection of Groundwater SSL)			0.29	82	0.38	0.00067	46	14	26	0.26	0.8	370
BKG02@7'	01/14/2026	7	3.65	105	<0.295	RP	<35.7	<10.9	<20.2	<0.191	<0.621	<287
BKG03@2'	01/14/2026	2	2.43	87.8	<0.292	RP	<35.4	<10.8	<20.0	0.192	<0.615	<285
BKG03@4'	01/14/2026	4	6.23	131	<0.297	RP	<36.0	<11.0	<20.3	0.254	<0.626	<289
BKG03@5'	01/14/2026	5	4.57	133	<0.289	RP	<34.9	10.7	<19.7	0.194	<0.607	<281
BKG03@6'	01/14/2026	6	3.94	111	<0.300	RP	<36.3	<11.0	<20.5	0.199	<0.631	<292
BKG03@7'	01/14/2026	7	5.33	166	<0.286	RP	<34.7	12.8	<19.6	0.224	<0.603	<279
BKG04@2'	01/15/2026	2	RP	RP	RP	RP	RP	RP	RP	RP	RP	RP
BKG04@4'	01/15/2026	4	RP	RP	RP	RP	RP	RP	RP	RP	RP	RP
BKG04@5'	01/15/2026	5	RP	RP	RP	RP	RP	RP	RP	RP	RP	RP
BKG04@6'	01/15/2026	6	RP	RP	RP	RP	RP	RP	RP	RP	RP	RP
BKG04@7'	01/15/2026	7	RP	RP	RP	RP	RP	RP	RP	RP	RP	RP
BKG05@2'	01/15/2026	2	RP	RP	RP	RP	RP	RP	RP	RP	RP	RP
BKG05@4'	01/15/2026	4	RP	RP	RP	RP	RP	RP	RP	RP	RP	RP
BKG05@5'	01/15/2026	5	RP	RP	RP	RP	RP	RP	RP	RP	RP	RP
BKG05@6'	01/15/2026	6	RP	RP	RP	RP	RP	RP	RP	RP	RP	RP
BKG05@7'	01/15/2026	7	RP	RP	RP	RP	RP	RP	RP	RP	RP	RP
1.25x Maximum Background Concentration			7.79	224	-	-	-	15.0	-	-	-	-

Notes:

1. **Bold** faced values exceed the ECMC Table 915-1 limit(s), but are within 1.25x background concentrations.
2. **Bold** faced values exceed the ECMC Table 915-1 limit(s) and native background concentrations.
3. Sample collected by a third party Chevron business partner.
4. Reporting limit used for 1.25 multiplier when all background results for a specific metal are non-detect.
5. * Indicates laboratory minimum detection limit in excess of SSL.
6. Compound falls within the ECMC Table 915-1 footnote 9.
7. Red & blue highlighted soil analytical values indicate an exceedance of the referenced soil screening level (SSL).

ECMC = Energy & Carbon Management Commission

(<) = Analytical result is less than the indicated laboratory reporting limit.

mg/kg = Milligrams per kilogram

ft. = Feet

bgs = Below ground surface

NA = Not analyzed

RP = Result Pending

Source material characterization sample, excavated and transported off site for disposal.

Material excavated and transported off site for disposal.



FLOWLINE ABANDONMENT FORM

CLIENT: Noble Energy		SITE NAME: Alexander Federal H4-2JI					DATE: 1/14/2026	REM. PROJECT #: 29328	WEATHER: Cloudy 50s	
SITE DIRECTIONS: CR38/CR41.5, 0.21 mi E, 0.18 mi S, SW into							JOB#: 6457			
LEGALS AND LAT/LONG: 40.259572, -104.665493							TASMAN PERSONNEL: JL			
SOIL TYPES: Poorly Graded Sand - SP							SURFACE GRADIENT: Southeast			
SOIL SAMPLING							FACILITY INFRASTRUCTURE			
Date/Time	Soil Sample ID	PID (ppm)	Visual	Olfactory	Photo?	Screen or Lab Sample?	EQUIPMENT		Quantity	
							Above Ground Storage Tank (AST)			
01-14-2026 11:49	FL01-G@4'	0.2	No Staining	No Odor	Yes	Lab	Buried or Partially Buried Vessel			
01-14-2026 12:05	FL01-J@4'	0.1	No Staining	No Odor	Yes	Lab	Separator			
01-14-2026 12:55	FL01-F-R@4'	0.7	No Staining	No Odor	Yes	Lab	Emission Control Device (ECD)			
01-14-2026 14:10	FL01-H@4'	1.1	No Staining	No Odor	Yes	Lab	Dump Line			
01-14-2026 13:06	BKG01@2'	0.4	No Staining	No Odor	Yes	Lab	Wellhead			
01-14-2026 13:08	BKG01@4'	0.7	No Staining	No Odor	Yes	Lab	Flowline		1 <input checked="" type="checkbox"/>	
01-14-2026 13:10	BKG01@5'	0.9	No Staining	No Odor	Yes	Lab	Other:			
01-14-2026 13:12	BKG01@6'	1.2	No Staining	No Odor	Yes	Lab	Soil Loads Removed			
01-14-2026 13:14	BKG01@7'	1.4	No Staining	No Odor	Yes	Lab	IMPACTED SOIL IDENTIFIED? Yes			
01-14-2026 13:20	BKG02@2'	1.2	No Staining	No Odor	Yes	Lab	ESTIMATED VOLUME OF IMPACTS:			
01-14-2026 13:22	BKG02@4'	1.1	No Staining	No Odor	Yes	Lab	Date	Number	CY	
01-14-2026 13:24	BKG02@5'	1.0	No Staining	No Odor	Yes	Lab	1/15/2026	6	60	
01-14-2026 13:26	BKG02@6'	0.8	No Staining	No Odor	Yes	Lab				
01-14-2026 13:28	BKG02@7'	0.5	No Staining	No Odor	Yes	Lab				
01-14-2026 13:50	BKG03@2'	1.2	No Staining	No Odor	Yes	Lab				
01-14-2026 13:52	BKG03@4'	1.2	No Staining	No Odor	Yes	Lab	Total Removed		6 60	
01-14-2026 13:54	BKG03@5'	1.3	No Staining	No Odor	Yes	Lab	Disposal Facility: WM - Buffalo Ridge			
01-14-2026 13:56	BKG03@6'	1.5	No Staining	No Odor	Yes	Lab	Groundwater Recovery			
01-14-2026 13:58	BKG03@7'	1.6	No Staining	No Odor	Yes	Lab	DATE GW ENCOUNTERED:		DEPTH:	
							GROUNDWATER IN CONTACT WITH IMPACTED SOIL?			
01-15-2026 09:30	FL01-I@6'	0.3	No Staining	No Odor	Yes	Lab				
01-15-2026 09:52	FL01-C-R@6'	0.7	No Staining	No Odor	Yes	Lab	LNAPL OR SHEEN OBSERVED ON GW?			
GROUNDWATER SAMPLING							Date	BBLs		
Date/Time	Groundwater Sample ID	Depth Collected	Turbid?	Sheen?	Odor?	Photo?				
							Total Removed		0	
							Disposal Facility:			

Chevron Rockies Business Unit

Field Qualitative Criteria for ECMC Reporting Associated with the Discovery of Potentially Impacted Material

If answered **Yes** to any of the questions listed below, this may suggest the presence of potentially impacted materials as outlined in ECMC Rule 912. Out of an abundance of caution, a “Yes” response will be reported to the ECMC within 24 hours after discovery, regardless of laboratory results. **Immediately notify the RBU Remediation Team.** Include a copy of this Field Qualitative Spill Criteria Checklist in the field Report.

Please answer the following questions when on-site:

1. Is there visible petroleum hydrocarbon staining in the soil? No_____
2. Does the soil sample from the stained area have a petroleum odor? No_____
3. Is there a petroleum hydrocarbon sheen on the nearby surface water? No_____
4. Does there appear to be a sheen of the surface of accumulated groundwater or seeps within the excavation indicative of petroleum? No_____
5. Is stained soil in contact with groundwater? No_____

Please Include relevant photos of the site conditions for items 1-5.

Location name: Alexander Federal H4-2JI

Please Circle Facility Type: Flowline



Date: 1/14/2026

GENERAL OBSERVATION FORM

Site Area/AOC: Alexander Federal H4-2JI Client: Noble Energy

Daily Forecast/Weather: Cloudy 50s Personnel: JL

Task/Location Description: Flowline removal, 915-1 Resampling, Excavation Oversight

Time	Description
08:30	Arrived onsite and completed JSA
	Marked out excavation locations at FL01-A and FL01-E
	Crew is beginning to pothole at former wellhead and failed sample location FL01-A@4'
	Flowline path deviates from initial SF27, waiting for locator to mark out path
	Flowline path marked out and samples collected
	Flowline fully removed
	Marked out backgrounds BKG01-BKG03
	Samples collected at 2', 4', 5', 6', & 7'
	Both excavations and flowline/background samples west of waterway will continue tomorrow
	Cleaned up work area
	Completed COC
15:05	Left site
	1/15/2026
08:30	Arrived onsite and completed JSA
	Completed excavation A
	Completed collecting BKG04-BKG05 and FL01-I and FL01-C-R
	Completed excavation E
	FL01-J, FL01-G, and FL01-F-R collected 1/14/26 came back hot for organics
	Crew will continue excavating those failed sample locations tomorrow
	Cleaned up work area
	Completed COC
15:40	Left site
	All background samples showed same lithology: Brown/tan, poorly graded sand, loose, fine-grained, moist, n/o/s

Need a photo log?



Need another General Observation Form?



Photographic Log



Equipment ID: FL01-G@4'		Equipment Type:		Equipment ID: FL01-J@4'		Equipment Type:	
Material:	Volume:	Contents:		Material:	Volume:	Contents:	
Notes/Conditions:				Notes/Conditions:			



Photographic Log



Equipment ID: FL01-F-R@4'		Equipment Type:	
Material:	Volume:	Contents:	
Notes/Conditions: Cut and capped end of flowline running north to south			

Equipment ID: FL01-H@4'		Equipment Type:	
Material:	Volume:	Contents:	
Notes/Conditions:			



Photographic Log



Equipment ID:		Equipment Type:	
Material:	Volume:	Contents:	
Notes/Conditions: BKG01@2', BKG01@4', BKG01@5', BKG01@6', BKG01@7'			

Equipment ID:		Equipment Type:	
Material:	Volume:	Contents:	
Notes/Conditions: BKG02@2', BKG02@4', BKG02@5', BKG02@6', BKG02@7'			



Photographic Log



Equipment ID:		Equipment Type:		Equipment ID: FL01-I@6'		Equipment Type:	
Material:	Volume:	Contents:		Material:	Volume:	Contents:	
Notes/Conditions: BKG03@2', BKG03@4', BKG03@5', BKG03@6', BKG03@7'				Notes/Conditions:			



Photographic Log



Equipment ID: FL01-C-R@6'		Equipment Type:		Equipment ID: FS01-A@6'		Equipment Type:	
Material:	Volume:	Contents:		Material:	Volume:	Contents:	
Notes/Conditions:				Notes/Conditions:			



Photographic Log



Equipment ID: SS01-A@4'		Equipment Type:		Equipment ID: SS02-A@4'		Equipment Type:	
Material:	Volume:	Contents:		Material:	Volume:	Contents:	
Notes/Conditions:				Notes/Conditions:			



Photographic Log



Equipment ID: SS03-A@4'		Equipment Type:		Equipment ID: SS04-A@4'		Equipment Type:	
Material:	Volume:	Contents:		Material:	Volume:	Contents:	
Notes/Conditions:				Notes/Conditions:			



Photographic Log



Equipment ID: FS01-E@7'		Equipment Type:		Equipment ID: SS01-E@5'		Equipment Type:	
Material:	Volume:	Contents:		Material:	Volume:	Contents:	
Notes/Conditions:				Notes/Conditions:			



Photographic Log



Equipment ID: SS02-E@5'		Equipment Type:		Equipment ID: SS03-E@5'		Equipment Type:	
Material:	Volume:	Contents:		Material:	Volume:	Contents:	
Notes/Conditions:				Notes/Conditions:			



Photographic Log



Equipment ID: SS04-E@5'		Equipment Type:		Equipment ID: BKG04		Equipment Type:	
Material:	Volume:	Contents:		Material:	Volume:	Contents:	
Notes/Conditions:				Notes/Conditions: BKG04@2', BKG04@4', BKG04@5', BKG04@6', BKG04@7'			



Photographic Log



Equipment ID: BKG05		Equipment Type:		Equipment ID:		Equipment Type:	
Material:		Volume:		Material:		Volume:	
Contents:				Contents:			
Notes/Conditions: BKG05@2', BKG05@4', BKG05@5', BKG05@6', BKG05@7'				Notes/Conditions:			