

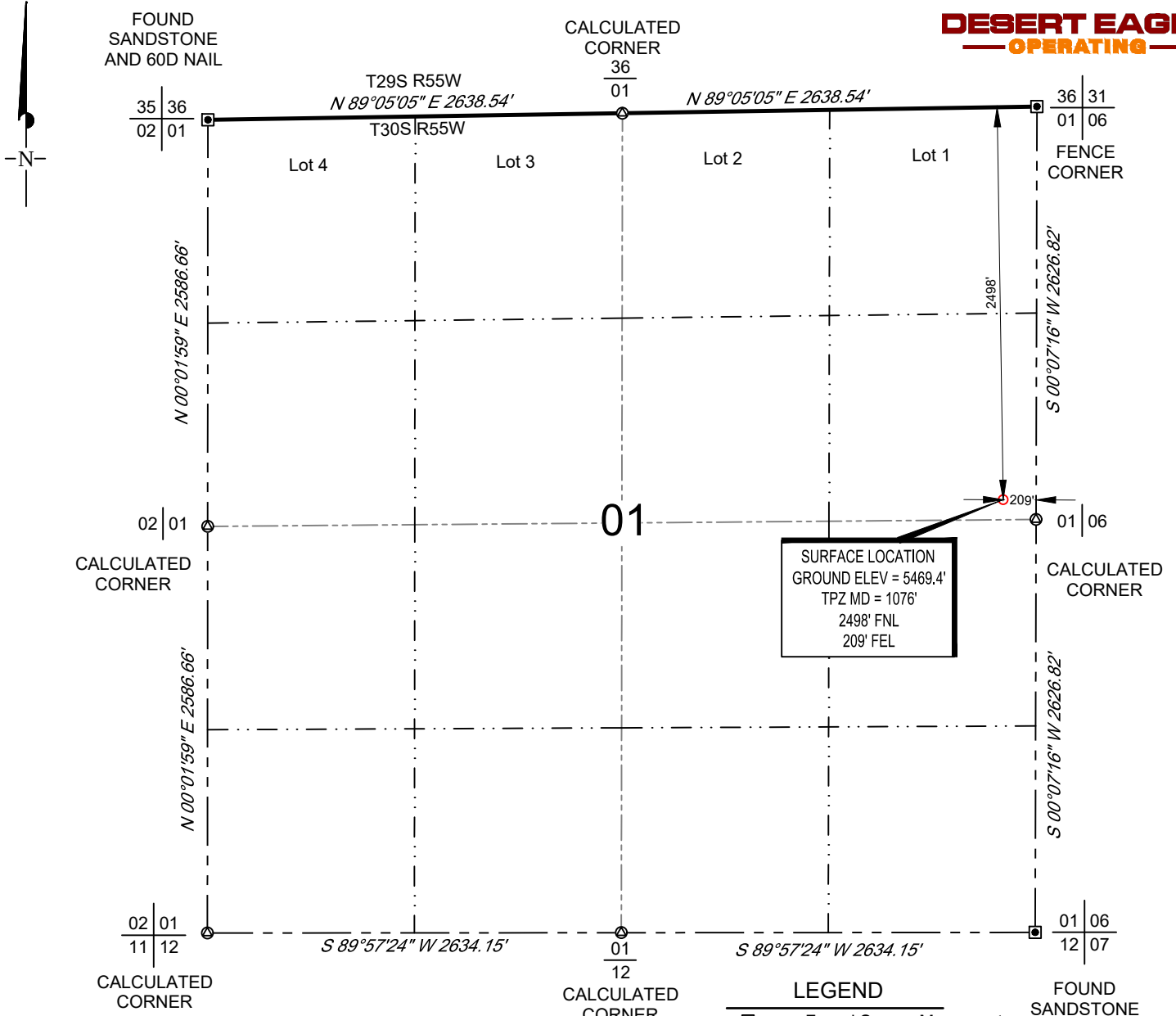
SCALE: 1" = 1000'
 0' 500' 1000'

WELL LOCATION MAP

SHL SE/4 NE/4, SECTION 01, TOWNSHIP 30-S, RANGE 55-W
 LAS ANIMAS COUNTY, COLORADO



DESERT EAGLE
 OPERATING



SURFACE LOCATION
 GROUND ELEV = 5469.4'
 TPZ MD = 1076'
 2498' FNL
 209' FEL

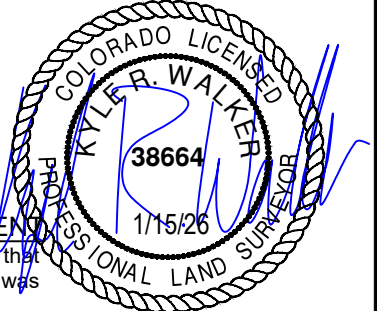
LEGEND	
	Found Survey Monument
	Calculated Corner Location
	Vertical Well Location
	Section Line
	Quarter Section Line
	Sixteenth Section Line

POINT	NAD 83		NAD 27	
	SURFACE HOLE LOCATION	N: 1295058.87	E: 3575527.62	N: 295049.40
	LAT: N37.460226	LONG: W103.517005	LAT: N37.460209	LONG: W103.516500

NOTES

- Horizontal (NAD 83) and vertical (NAVD 88) datum is based on the Trimble VRS Network or OPUS Solution.
- All directions, distances, and dimensions shown hereon are based on coordinates from the "Colorado coordinate system of 1983 central zone" (article 52 of title 38, C.R.S.).
- All section line dimensions shown hereon are based on field measurements of existing monuments and/or physical evidence found in the field unless otherwise indicated.
- See Form 2A, if applicable for visible improvements within 500' of wellhead.
- Distances to nearest section lines are measured perpendicularly.
- This is not a land survey nor land survey plat.

PDOP Reading: 2.281 Instrument Operator: Brian Martina
 Date Surveyed: 11/19/2025



SURVEYOR'S STATEMENT

The undersigned hereby states that the well location shown hereon was staked on the ground based on existing monumentation and/or physical evidence found in the field and is correct to the best of my knowledge, information and belief.



DESERT EAGLE OPERATING RED ROCKS #1-09	SW	01/03/2024	REVISION:	
	SHEET :	1 OF 1	INT	DATE
	FILE:LO_RED_ROCKS_1_09_REV1	EJK	01/15/2026	