



MIDWEST WIRELINE

DUAL COMP POROSITY LOG

Company Desert Eagle Operating

Well Red Rocks #1-09

Field

County Las Animas State Colorado

Location: API #: 05-071-09936-00

SE NE

SEC 1 TWP 30S RGE 55W

Other Services
DIL

Company Desert Eagle Operating
Well Red Rocks #1-09
Field
County Las Animas
State Colorado

Permanent Datum
Log Measured From
Drilling Measured From

Ground Level
Ground Level
Ground Level

Elevation
Elevation
Elevation

K.B.
D.F.
G.L.

Date 1/8/2026

Run Number One

Type Log CNL/CDL

Depth Driller

Depth Logger 1262

Bottom Logged Interval 1261

Top Logged Interval 0

Type Fluid In Hole Air

Salinity, PPM CL

Density

Level

Max. Rec. Temp. F

Operating Rig Time 2 Hours

Equipment -- Location 110 HAYS
Recorded By D. Schmidt
Witnessed By Brandon Parks

Borehole Record

Casing Record

Run No.	Bit	From	To	Size	Wgt.	From	To
One		0	10	13.375	46	0	10
Two		10	TD	7	20	0	TD

<<< Fold Here >>>

All interpretations are opinions based on inferences from electrical or other measurements and Midwest Wireline LLC cannot and does not guarantee the accuracy or correctness of any interpretation, and Midwest Wireline LLC will not be liable or responsible for any loss, costs, damages, or expenses incurred or sustained by anyone resulting from any interpretation made by any of our officers, agents or employees.

Comments

N/A DENOTES NOT AVAILABLE OR NON-APPLICABLE.

Desert Eagle yard,
East then South into

Log Measured From: Ground Level Ft. Above Permanent Datum

THANK YOU FOR USING MIDWEST WIRELINE LLC
785-625-3858

Your Midwest Wireline Crew

This Log Record Was Witnessed By

Engineer: D. Schmidt
Operator:
Operator:
Operator:

Primary Witness: Brandon Parks
Secondary Witness:
Secondary Witness:
Secondary Witness:

Sensor	Offset (ft)	Schematic	Description	Length (ft)	O.D. (in)	Weight (lb)
GR	9.50		GR-M&W (105)	3.00	3.50	50.00
			CDL-M&W (308-05)	8.50	4.00	250.00
LSD DCAL SSD	2.35 2.33 1.85					

Dataset: desert eagle_red rock 1-09.db: field/well/cdl/pass1.1
 Total length: 11.50 ft
 Total weight: 300.00 lb
 O.D.: 4.00 in

Sensor	Offset (ft)	Schematic	Description	Length (ft)	O.D. (in)	Weight (lb)
GR	15.00		GR-M&W (103)	3.00	3.50	50.00
LGRD	11.00		LGRD-M&W (49) Simlec Long Guard	3.50	3.50	40.00
SCAL SWN	5.10 4.45		SWN-M&W-SP (SP-701)	10.50	4.00	190.00
SP	0.20					

Dataset: desert eagle_red rock 1-09.db: field/well/Dil/pass4
 Total length: 17.00 ft
 Total weight: 280.00 lb
 O.D.: 4.00 in

Log Variables

DatabaseC:\ProgramData\Warrior\Data\desert eagle_red rock 1-09.db
 Dataset field/well/cdl/pass3.1/_vars_

Top - Bottom

AIR_HOLE?	BOREID in	BOTTEMP degF	CASEOD in	CASETHCK in	FLUIDDEN g/cc	MATRXDEN g/cc	MudWgt lb/gal
Yes	6.25	100	0	0	1	2.68	0
NPORSEL	PERFS	SNDERR mmho/m	SNDERRM mmho/m	SPSHIFT mV	SRFTEMP degF	SZCOR	TDEPTH ft
Sandstone	No	0	0	0	45	Off	1262



MIDWEST WIRELINE

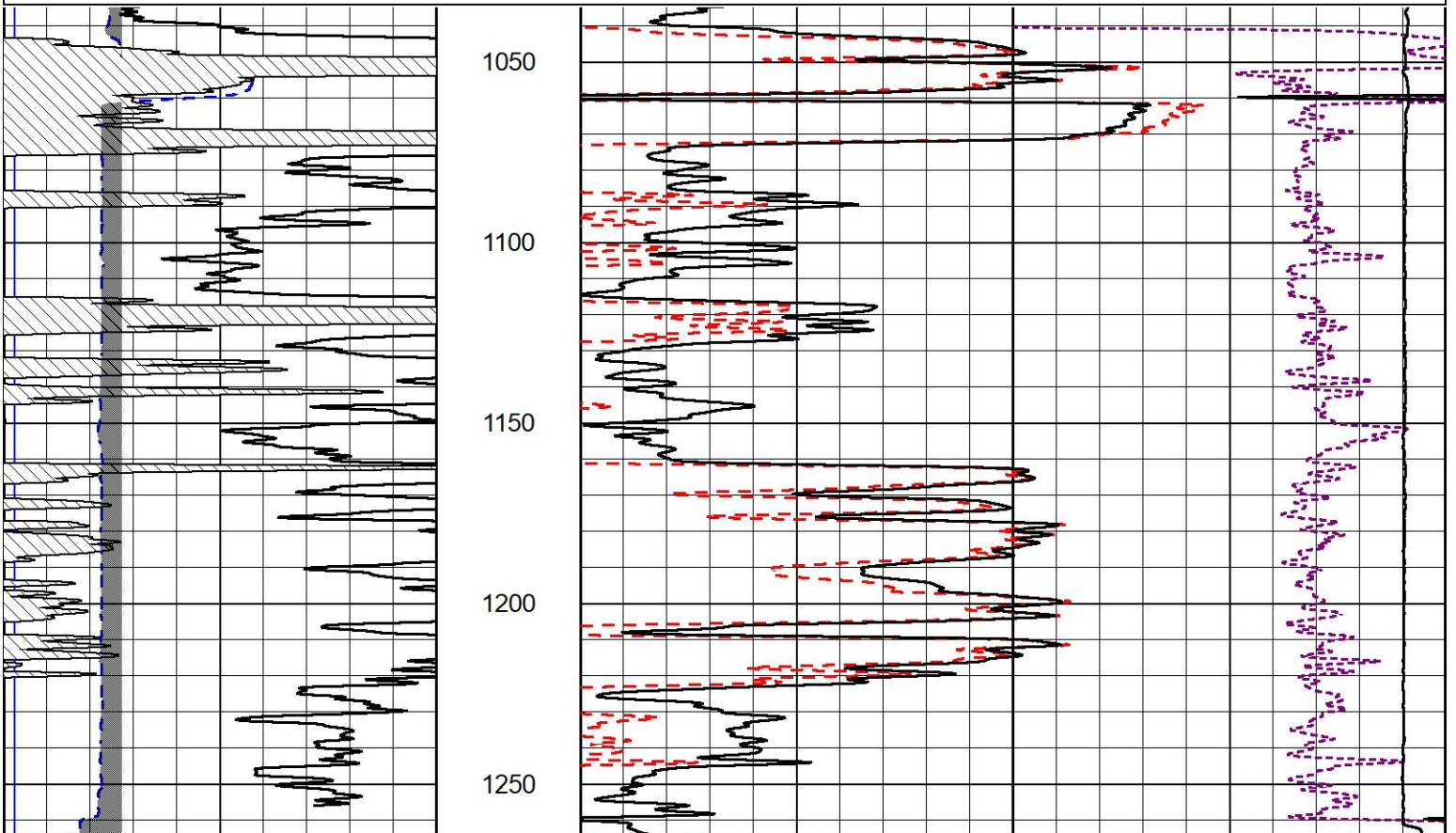
2" SCALE BULK DENSITY

MAIN PASS

Database File desert eagle_red rock 1-09.db
 Dataset Pathname cdl/pass3.2
 Presentation Format _cdl
 Dataset Creation Fri Jan 09 09:13:20 2026
 Charted by Depth in Feet scaled 1:600

0	Gamma Ray (GAPI)	150
4	Caliper (in)	14

30	Compensated Density (pu)	-10
2	Bulk Density (g/cc)	3
15000	Line Tension (lb)	0
-0.25	Correction (g/cc)	0.25



0	Gamma Ray (GAPI)	150
4	Caliper (in)	14

30	Compensated Density (pu)	-10
2	Bulk Density (g/cc)	3

15000

Line Tension (lb)

0

-0.25

Correction (g/cc)

0.25



MIDWEST WIRELINE

DETAIL SECTION

MAIN PASS

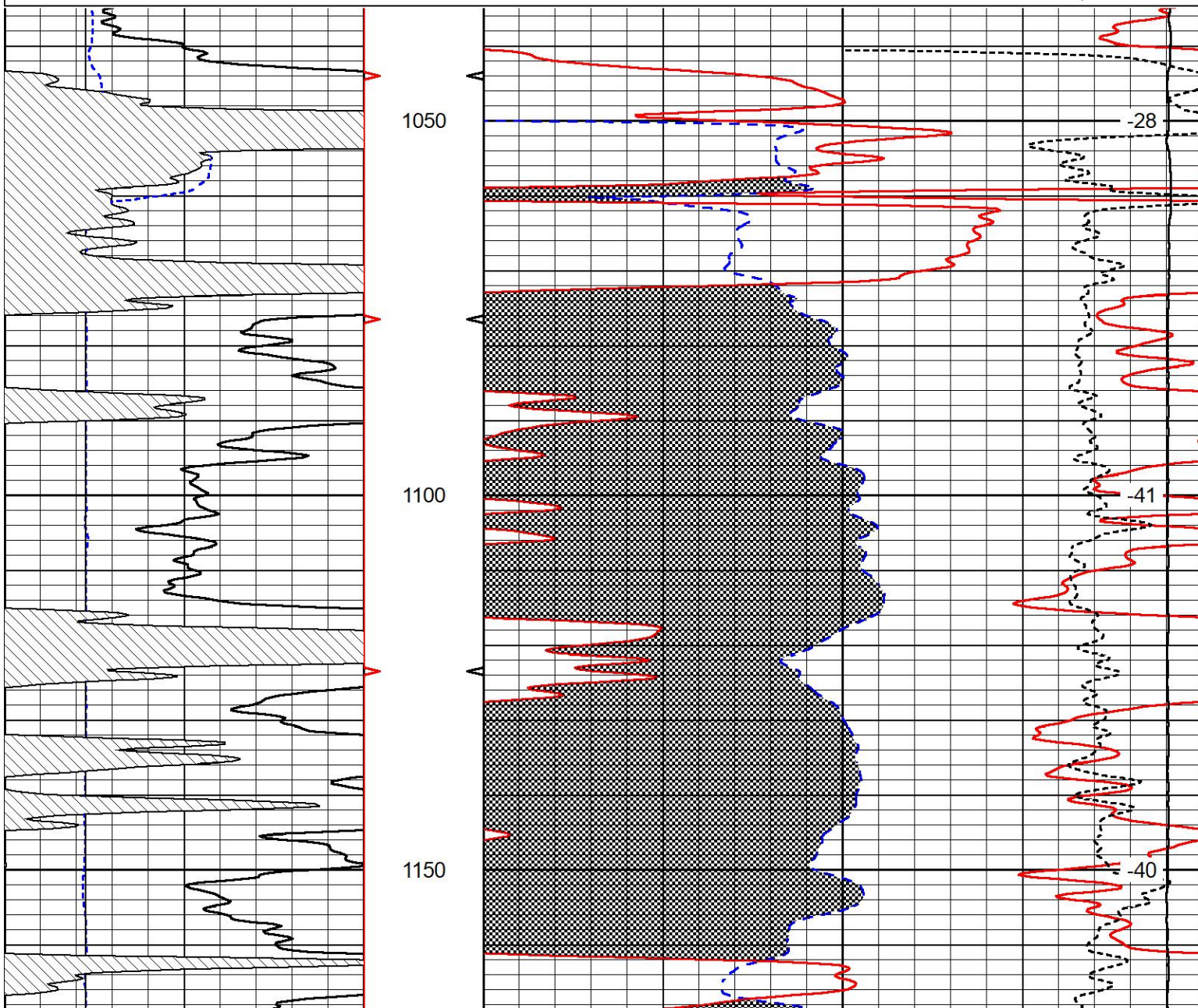
Database File desert eagle_red rock 1-09.db
 Dataset Pathname cdl/pass3.1
 Presentation Format swncdl
 Dataset Creation Fri Jan 09 09:13:14 2026
 Charted by Depth in Feet scaled 1:240

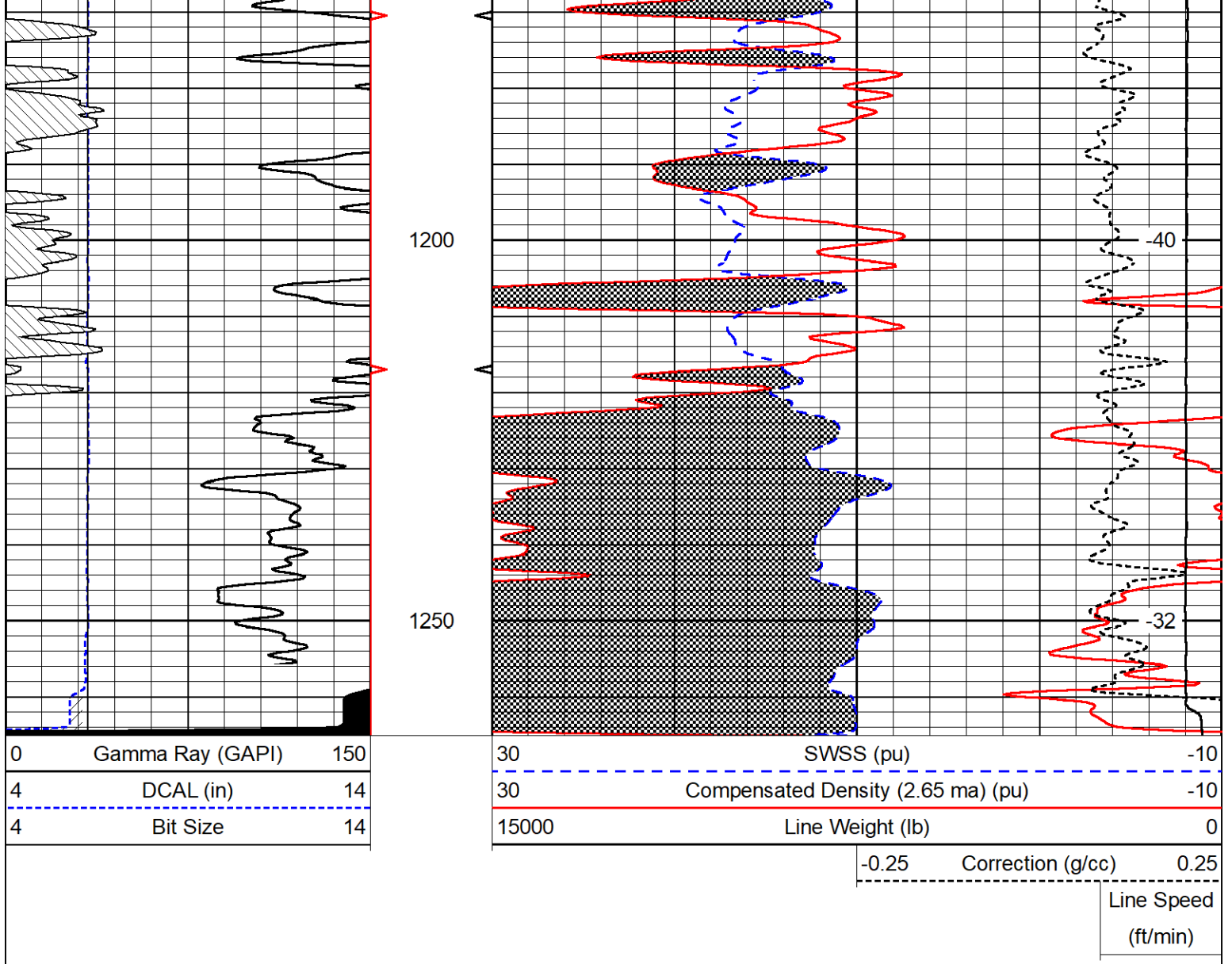
0	Gamma Ray (GAPI)	150
4	DCAL (in)	14
4	Bit Size	14

30	SWSS (pu)	-10
30	Compensated Density (2.65 ma) (pu)	-10
15000	Line Weight (lb)	0

-0.25 Correction (g/cc) 0.25

Line Speed
(ft/min)





Calibration Report

Database File: desert_eagle_red_rock_1-09.db
 Dataset Pathname: cdl/pass3.1
 Dataset Creation: Fri Jan 09 09:13:14 2026

Compensated Density Calibration Report

Serial-Model: 308-05-M&W
 Source #: 21170B
 Master Calibration Performed: Wed May 14 15:44:32 2025

Master Calibration

	Density		Far Detector	Near Detector	
Magnesium	1.755	g/cc	5263.39	6024.11	cps
Aluminum	2.570	g/cc	1137.62	4032.96	cps
Spine Angle = 75.32			Density/Spine Ratio = 0.515		
	Size		Reading		
Small Ring	6.00	in	1.03		
Large Ring	14.00	in	1.15		

Gamma Ray Calibration Report

Serial Number:	105	
Tool Model:	M&W	
Performed:	Tue Aug 26 12:59:12 2025	
Calibrator Value:	500.0	GAPI
Background Reading:	24.0	cps
Calibrator Reading:	637.0	cps
Sensitivity:	0.8000	GAPI/cps



Company	Desert Eagle Operating
Well	Red Rocks #1-09
Field	
County	Las Animas
State	Colorado