

# Final Reclamation Inspection

September 18th, 2025

Operator: Kerr McGee Oil & Gas Onshore - 47120

Location ID: 322832

Inspection Document #: 714003205

Weld County, CO

Corey Mcdonough  
Reclamation Specialist, ECMC



**COLORADO**

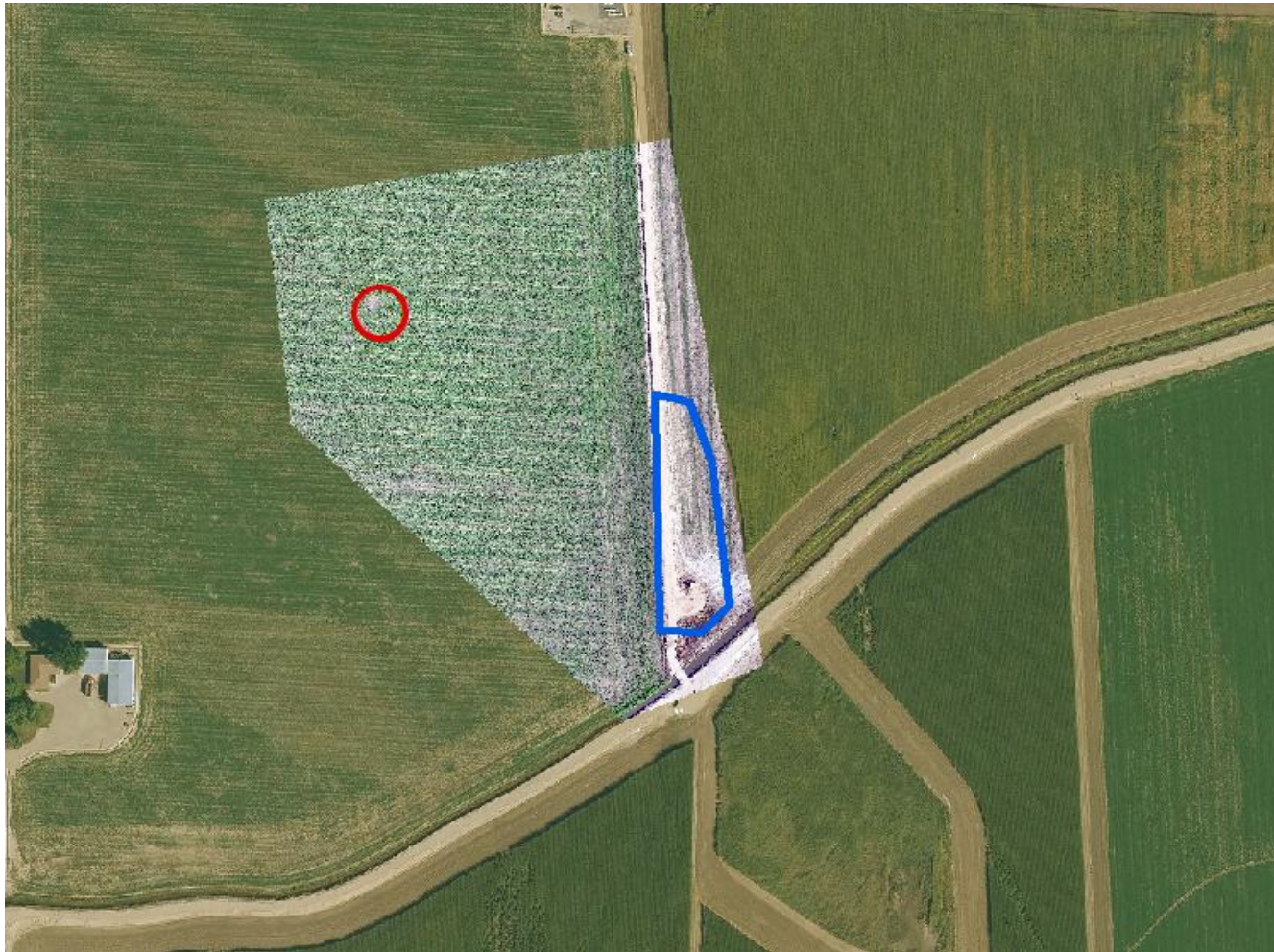
**Energy & Carbon Management  
Commission**

Department of Natural Resources



**Photo 1.** NAIP aerial imagery (2009) illustrating the well location (red circle), associated tank battery location (blue polygon), and well access road (black line). The tank battery is associated with the Bein 6-18 well API #123-25407 under location ID #332702.

Inspection Photos  
Location Name: Starck #1  
Location ID: 322832



**Photo 2.** Orthomosaic (drone) imagery taken 9/18/2025 and NAIP aerial imagery (2023) illustrating the well location (red circle) and associated tank battery (blue polygon).



Inspection Photos  
Location Name: Starck #1  
Location ID: 322832



**Photo 3.** Drone aerial imagery taken south of well location, facing north (displaying the well).



Inspection Photos  
Location Name: Starck #1  
Location ID: 322832



**Photo 4.** Drone aerial imagery taken west of well location, facing east (displaying the well and access road).



Inspection Photos  
Location Name: Starck #1  
Location ID: 322832



**Photo 5.** Drone aerial imagery taken north of well location, facing south (displaying the well).



Inspection Photos  
Location Name: Starck #1  
Location ID: 322832



**Photo 6.** Drone aerial imagery taken east of well location, facing west (displaying the well).



Inspection Photos  
Location Name: Starck #1  
Location ID: 322832



**Photo 7.** Drone aerial imagery taken directly above well location (displaying the well).





**Photo 8.** Drone aerial imagery taken northeast of well location, facing southwest (displaying the well, presumed flowline, and TB).