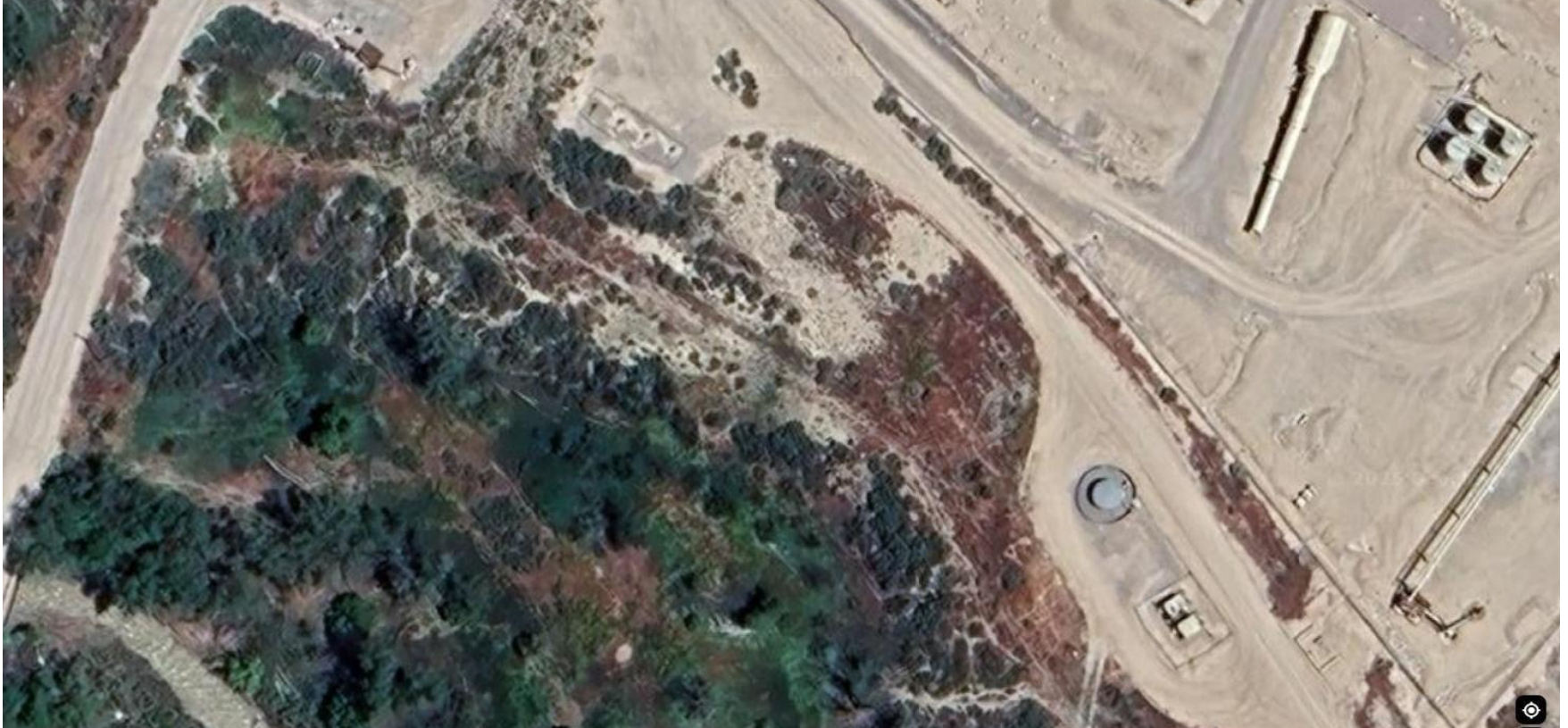


Storm Water Management and Erosion control
Location Name: TEP ROCKY MOUNTAIN LLC UNOCAL GM 31-33 Pad
Location ID: 335364



**Location Overview: Location is within High
Priority/Density/NSO/Black Bear Habitat areas. Location is
approximately 116 yards from Parachute Creek.
Section/Township/Range: 33 6S96W**

Storm water Management and Erosion control
Location Name: TEP ROCKY MOUNTAIN LLC UNOCAL GM 31-33 Pad
Location ID: 335364



North West corner of location.



North East corner of location.



South West corner of location.



South East corner of location.