

Looking at an open excavation at the location of Spill/Release Point ID 482194. Barbed wire fencing surrounds the excavation.



Frederick, CO, United States

Lat 40.123443 / Long -105.013374

01/13/2026 14:04 GMT-07:00

ECMC : Environmental Inspection



☁ 59°F

🌀 31° NE



17.27 mph



4905.81 ft



3.71 m

Salt crusting is visible within the excavation.



Weeds obscure visibility of the majority of the excavation base and sidewalls; groundwater is visible at the base of the excavation.



Frederick, CO, United States

Lat 40.123419, Long -105.013215
01/13/2026 14:04 GMT-07:00
ECMC : Environmental Inspection



☁ 59°F

🌍 6° N

🌬 17.27 mph

🏔 4904.72 ft

📍 3.45 m

Monitoring wells completed as PVC stickups are visible outside of the excavation. Fencing and stockpiles associated with Spill/Release Point ID 491349 are visible in the background and will be addressed in a separate Field Inspection Report.



Frederick, CO, United States

Lat 40.123423, Long -105.012938

01/13/2026 14:04 GMT-07:00

ECMC : Environmental Inspection



59°F

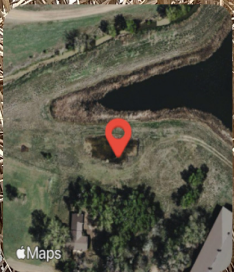
211° SW

17.27 mph

4906.89 ft

3.15 m

Looking at groundwater at the base of the excavation.



Frederick, CO, United States

Lat 40.123550, Long -105.013040
01/13/2026 14:06 GMT-07:00
ECMC : Environmental Inspection



☁ 59°F

🌬 129° SE

🌬 17.27 mph

🏠 4902.89 ft

📍 3.81 m

Looking at the pond adjacent to the location.



Frederick, CO, United States

Lat 40.123588, Long -105.013038
01/13/2026 14:06 GMT-07:00
ECMC : Environmental Inspection



☁ 59°F

🌐 323° NW



17.27 mph



4903.54 ft



7.14 m