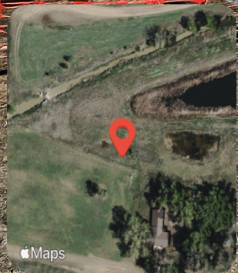


Looking at the spill location. Orange construction fencing has been installed around the open excavations, but has fallen.



### Frederick, CO, United States

Lat 40.123529, Long -105.013656  
01/13/2026 14:08 GMT-07:00  
ECMC : Environmental Inspection



59°F

148° SE

17.27 mph 4891.67 ft 3.54 m

Looking at the northern excavation open at the spill location. Stained soil and salt crusting are visible on the excavation sidewalls. A sheen is visible on groundwater at the base of the excavation. Bird netting has been installed over the open excavations. A segment of flowline is visible protruding from the excavation.



**Frederick, CO, United States**

Lat 40.123523, Long -105.013744  
01/13/2026 14:08 GMT-07:00  
ECMC : Environmental Inspection

17.27 mph   4902.03 ft   4.75 m

59°F  
148° SE

Looking at the southern excavation open at the spill location. Petroleum hydrocarbon saturated soil and salt crusting are visible on the excavation sidewalls. Free product is visible on groundwater at the base of the excavation. Bird netting has been installed over the open excavations.



Looking at the northern and southern excavations open at the spill location. Petroleum hydrocarbon saturated soil, stained soil, and salt crusting are visible on the excavation sidewalls. A sheen and free product are visible on groundwater at the base of the excavations. Bird netting has been installed over the open excavations.





### Frederick, CO, United States

Lat 40.123530, Long -105.014065

01/13/2026 14:10 GMT-07:00

ECMC: Environmental Inspection



☁ 59°F

🌍 349° N

🌬️ 17.27 mph

🏔️ 4906.2 ft

🔥 3.91 m

Stained soil is visible outside of the current spill response footprint.



Frederick, CO, United States

Lat 40.123541, Long -105.014053  
01/13/2026 14:10 GMT-07:00  
ECMC : Environmental Inspection



59°F

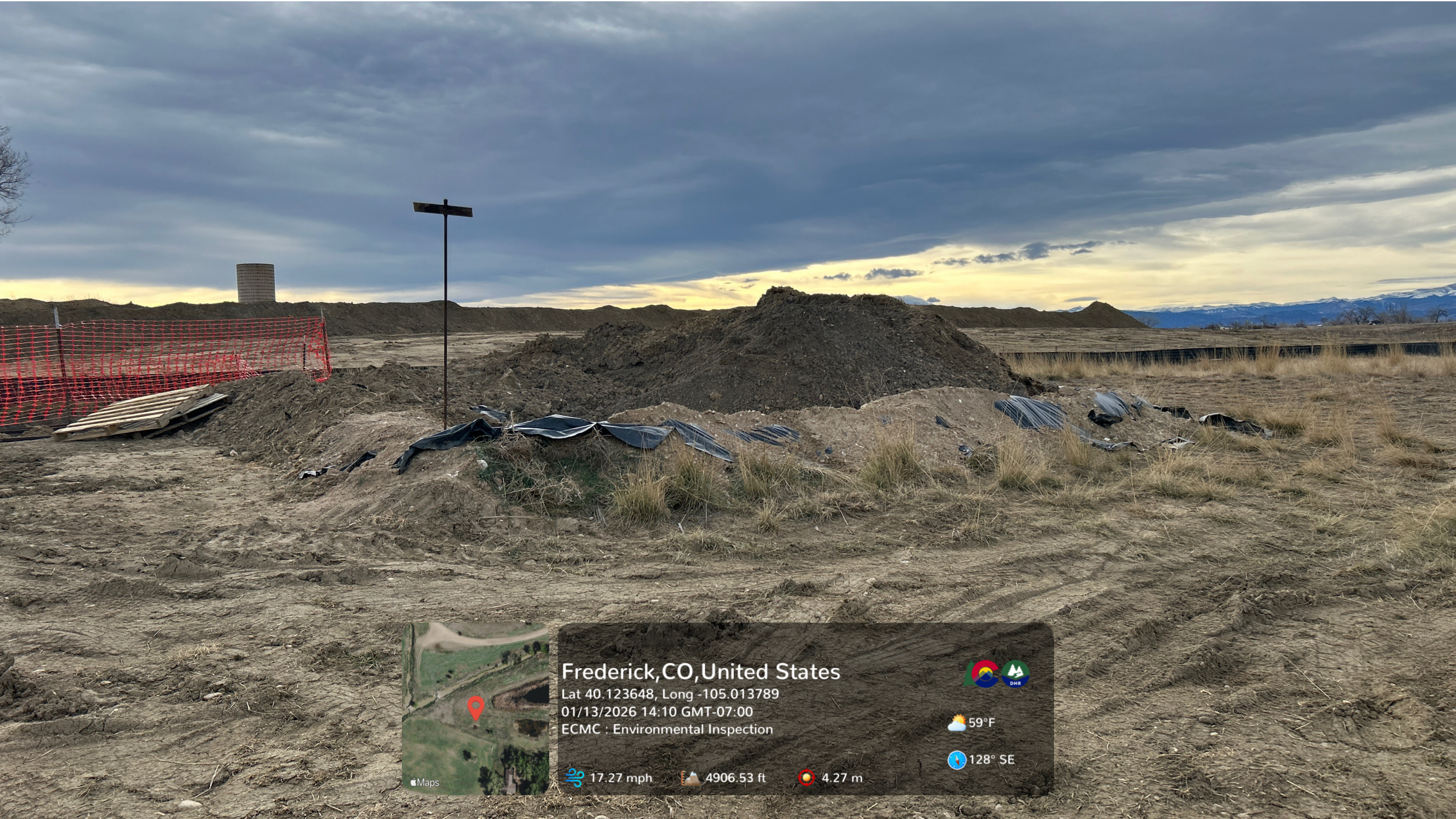
30° NE

17.27 mph 4908.01 ft 3.81 m



Maps

Looking at a stockpile marked "contaminated" which remains on location. Impacted soil was observed within the stockpile. A liner is visible but has been compromised by holes/tears; soil has spilled outside of containment.



 **Frederick, CO, United States**  
Lat 40.123648, Long -105.013789  
01/13/2026 14:10 GMT-07:00  
ECMC : Environmental Inspection

 59°F  
 128° SE

 17.27 mph  4906.53 ft  4.27 m



Looking at an unmarked, unlined soil stockpile with no stormwater BMPs which remains on location. Areas of gray staining are visible within the stockpile.



 **Frederick, CO, United States**  
Lat 40.123403, Long -105.013771  
01/13/2026 14:10 GMT-07:00  
ECMC : Environmental Inspection

 59°F  
298° NW

 17.27 mph  4908.4 ft  3.47 m

Looking at a third open excavation, located immediately east of the initial spill/release point. Stained soil and salt crusting are visible on the excavation sidewalls. A sheen is visible on groundwater at the base of the excavation. No wildlife protection equipment has been installed over the open excavation. A segment of flowline is visible protruding from the excavation.



Frederick, CO, United States

Lat 40.123526, Long -105.013644

01/13/2026 14:11 GMT-07:00

ECMC: Environmental Inspection



59°F

124° SE

17.27 mph

4901.8 ft

5.08 m

Looking at both excavations at the spill location. Orange construction fencing surrounds the eastern excavation but is beginning to fall.



**Frederick, CO, United States**

Lat 40.123507, Long -105.013596  
01/13/2026 14:11 GMT-07:00  
ECMC : Environmental Inspection



☁ 59°F

🌐 152° SE

🌬️ 17.27 mph    🏔️ 4902.46 ft    📶 7.08 m