

Final Reclamation Inspection

September 2nd, 2025

Operator: Kerr McGee Oil & Gas Onshore - 47120

Location ID: 327392

Inspection Document #: 714003055

Weld County, CO

Corey Mcdonough
Reclamation Specialist, ECMC



COLORADO

**Energy & Carbon Management
Commission**

Department of Natural Resources

Inspection Photos

Location Name: Moser Farm UPRR 32-9 5

Location ID: 327392



Photo 1. NAIP aerial imagery (2009) illustrating the well location (red circle), associated tank battery location (blue polygon), and well access road (black line).



Inspection Photos

Location Name: Moser Farm UPRR 32-9 5

Location ID: 327392

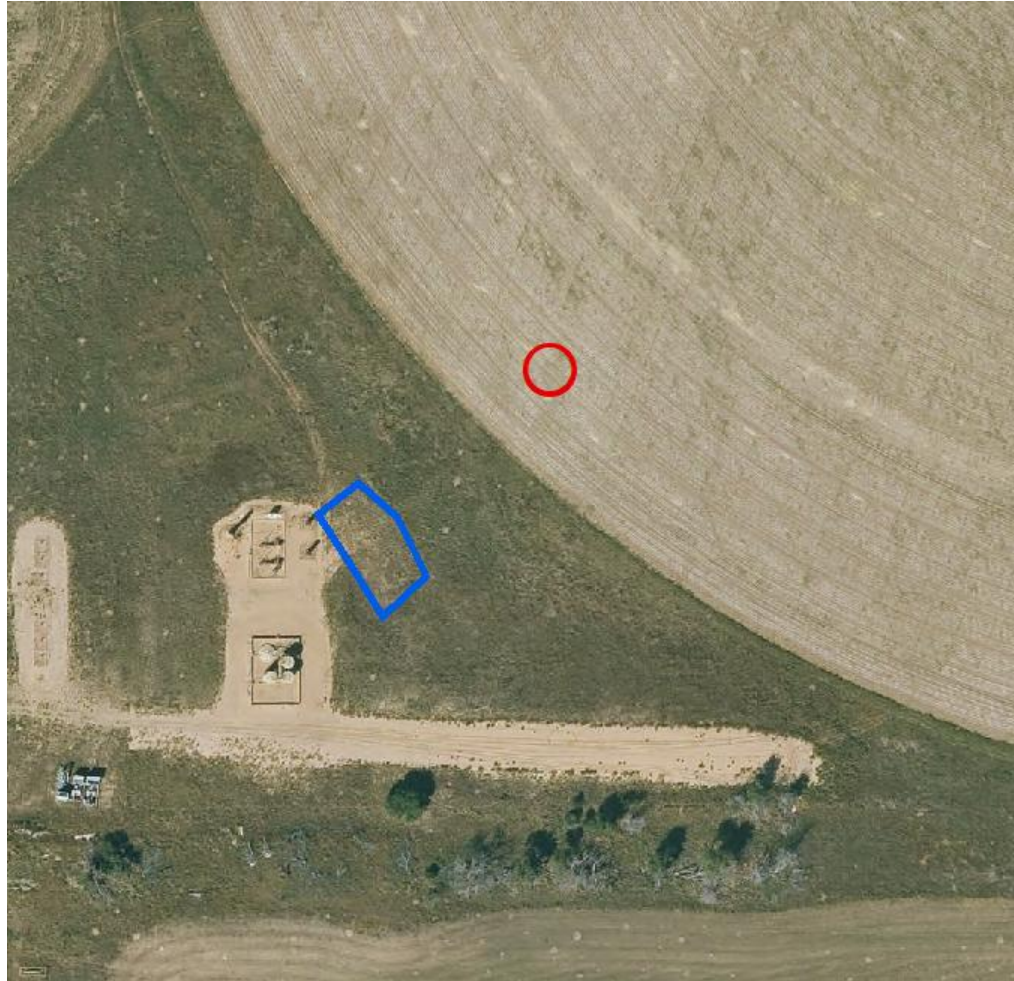


Photo 2. NAIP aerial imagery (2023) illustrating the well location (red circle) and associated tank battery (blue polygon).



Inspection Photos

Location Name: Moser Farm UPRR 32-9 5

Location ID: 327392



Photo 3. Drone aerial imagery taken south of well location, facing north (displaying the well).



Inspection Photos

Location Name: Moser Farm UPRR 32-9 5

Location ID: 327392



Photo 4. Drone aerial imagery taken west of well location, facing east (displaying the well).



Inspection Photos

Location Name: Moser Farm UPRR 32-9 5

Location ID: 327392



Photo 5. Drone aerial imagery taken north of well location, facing south (displaying the well, access road, and TB).



Inspection Photos

Location Name: Moser Farm UPRR 32-9 5

Location ID: 327392



Photo 6. Drone aerial imagery taken east of well location, facing west (displaying the well, access road, and TB).



Inspection Photos

Location Name: Moser Farm UPRR 32-9 5

Location ID: 327392



Photo 7. Drone aerial imagery taken northeast of well location, facing southwest (displaying the well, access road, presumed flowline, and TB).



Inspection Photos

Location Name: Moser Farm UPRR 32-9 5

Location ID: 327392



Photo 8. Drone aerial imagery taken south of the tank battery location, facing north (displaying the TB, access road, and well).





Photo 9. Drone aerial imagery taken west of the tank battery location, facing east (displaying TB, and access road).

Inspection Photos

Location Name: Moser Farm UPRR 32-9 5

Location ID: 327392



Photo 10. Drone aerial imagery taken north of the tank battery location, facing south (displaying the TB and part of the access road).



Inspection Photos

Location Name: Moser Farm UPRR 32-9 5

Location ID: 327392



Photo 11. Drone aerial imagery taken east of the tank battery location, facing west (displaying the TB and part of the access road).



Inspection Photos

Location Name: Moser Farm UPRR 32-9 5

Location ID: 327392



Photo 12. Ground photo taken from the center of the TB looking east with typical vegetation including musk thistle.



Inspection Photos

Location Name: Moser Farm UPRR 32-9 5

Location ID: 327392



Photo 13. Ground photo of musk thistle in the TB footprint.



Inspection Photos

Location Name: Moser Farm UPRR 32-9 5

Location ID: 327392



Photo 14. Ground photo of reference veg, northeast of TB looking northeast.

