



WILDLIFE SURVEY SUMMARY – T035

Bishop Loss of Containment

Galeton, CO

EXECUTIVE SUMMARY

The T035 parcel was visited on April 25, 2025, to assess potential impacts related to the Bishop Loss of Containment. On April 25, the wildlife team conducted an agricultural wildlife survey during the initial agricultural assessment. Impacts were not observed by CTEH and H2 evaluators, and structural and vegetative cleaning was not scoped for this parcel during the time of the initial assessment.

This parcel is situated within mule deer severe winter range high priority habitat. Operator incorporated best management practices to minimize the likelihood of potential impacts to wildlife resources. To date, wildlife assessments have been undertaken on April 25, and no potential impacts to wildlife resources have been observed.

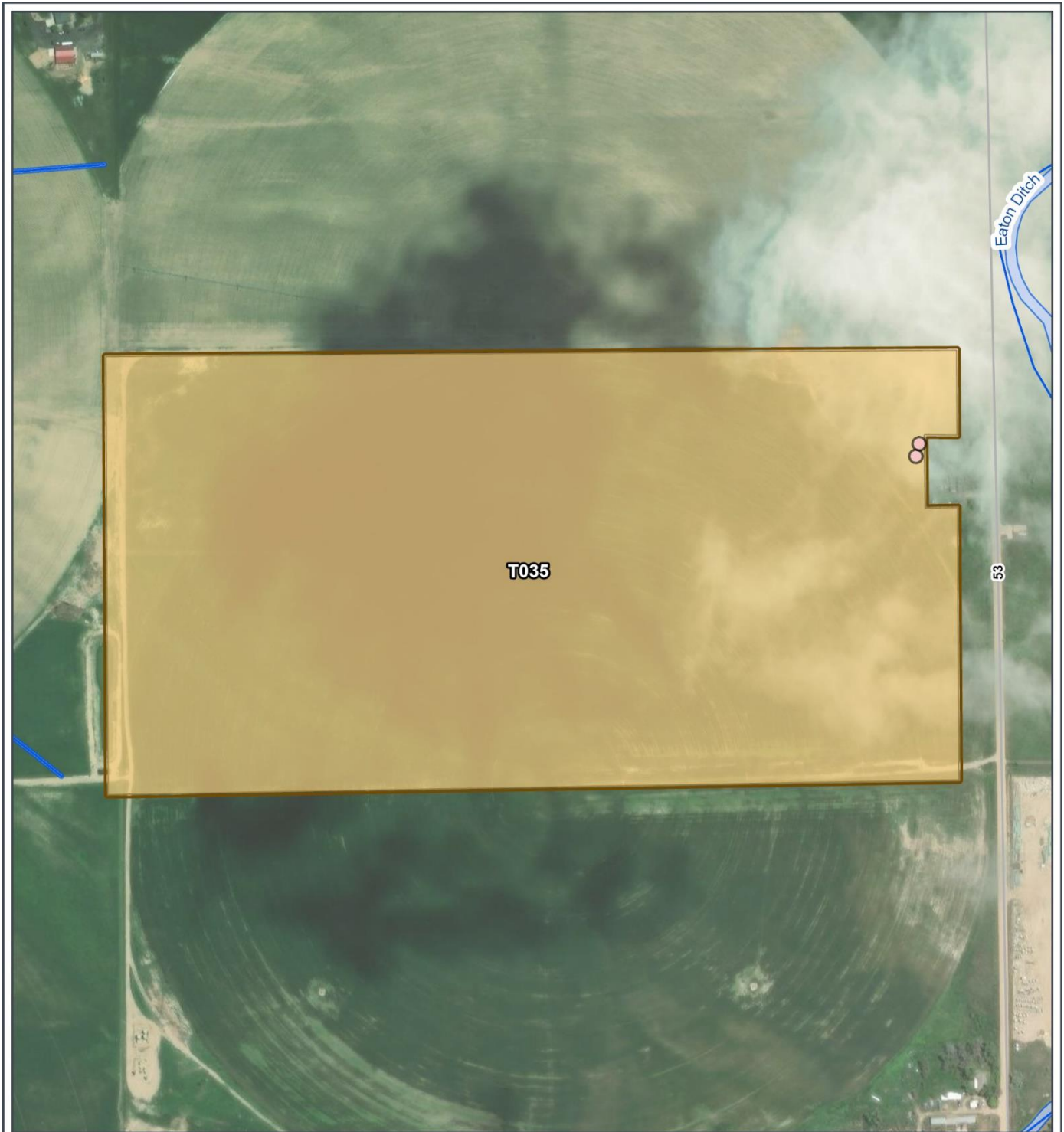
WILDLIFE FINDINGS

Property T #	Survey Date	Activity Type	Survey Notes
T035	April 25, 2025	Initial Assessment - Agricultural	Assessed as potential decontamination site. Two unknown status songbird nests were observed. No potential wildlife impacts observed.

METHODS

Initial Assessment – Agricultural Wildlife Survey: A visual survey was conducted covering all edge habitat, fencerows, and water sources within the agricultural parcel. Wildlife signs including burrows, nests and tracks were documented. Known raptor nests within 0.5 miles of the parcel were checked for activity to determine potential disturbance risk during planned remediation operations. No transects were conducted across actively cultivated cropland, as these areas are not considered suitable habitat for nesting or denning of species of concern per CPW. Observations were recorded in field notes and provided to H2. GPS locations and photographs were collected when appropriate.

SURVEY MAP



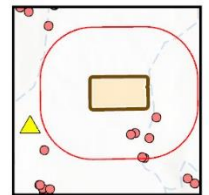
BISHOP LOSS OF CONTAINMENT
T035: 79.46 Acres

- ▲ Incident Location
- Undetermined Nest Status
- Local Road
- NHD Flowline
- NWI Wetland
- Parcel Boundary

WELD County, Colorado
 NAD 1983 UTM Zone 13N

- Raptor Nest
- Raptor Nest Buffer (0.5-mile)

N
 1:6,000



Base Map: CTEH,
 accessed December 2025
 Updated: 12/31/2025
 Project No. 820901.001
 File: Parcel Mapping



