

WGS84
±19ft

40.09451, -104.77822

▲^m
±5m

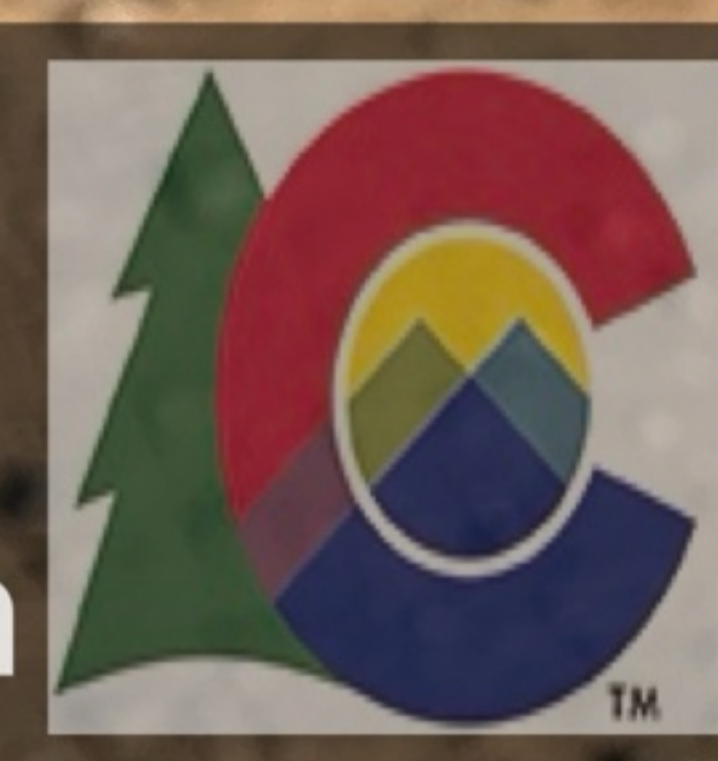
1520

°;T
±11

NE27



ECMC
Environmental
Field Inspection



© 05-Jan-26 12:55:59
KPK Locate Flag

WGS84
±19ft

40.09464, -104.77800

m
±5m

1520

°T
±11

NW295



**ECMC
Environmental
Field Inspection**



© 05-Jan-26 12:57:29
Piece of 3" fiberglass flowline east of KPK Facility 2

WGS84
±23ft

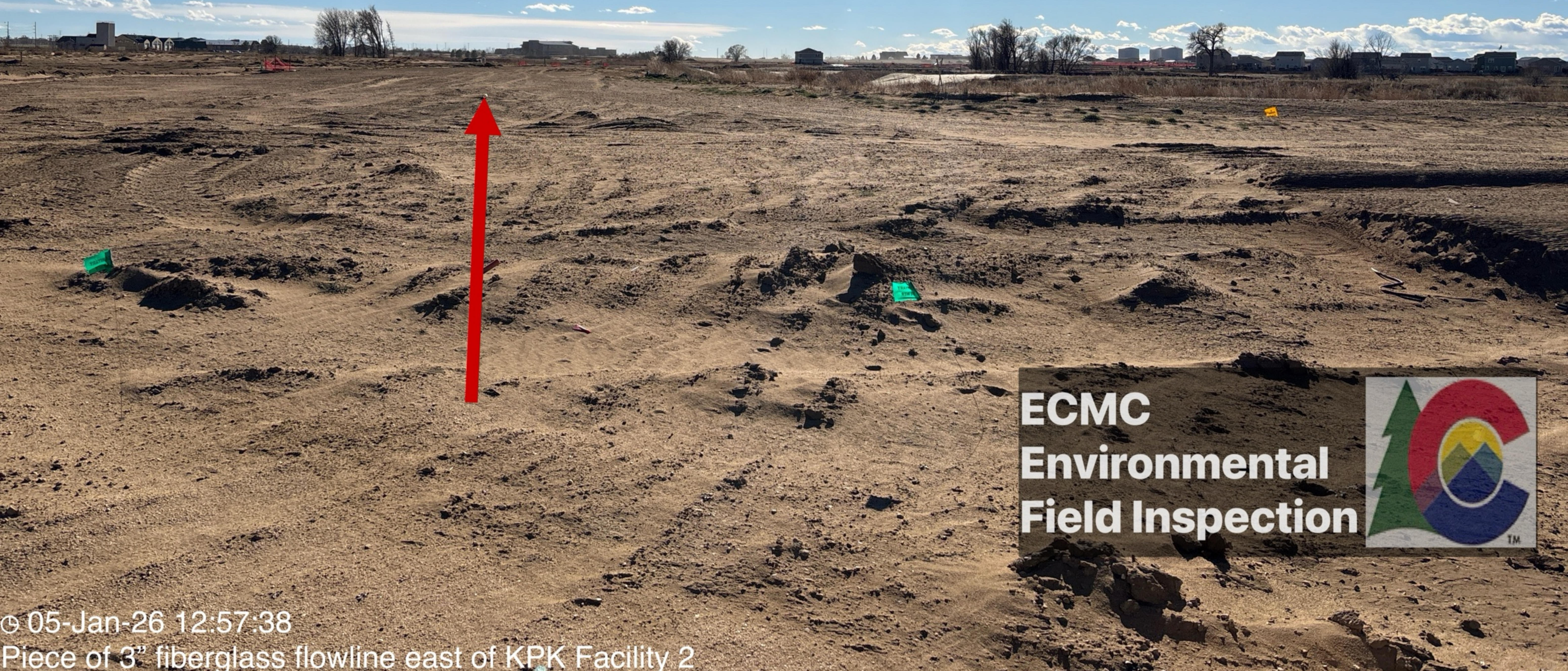
40.09462, -104.77787

Λ^m
±6m

1519

°T
±12

E100



**ECMC
Environmental
Field Inspection**



© 05-Jan-26 12:57:38
Piece of 3" fiberglass flowline east of KPK Facility 2

WGS84
±24ft

40.09462, -104.77781

m
±6m

1520

°T
±30

E101



**ECMC
Environmental
Field Inspection**



© 05-Jan-26 12:57:53
Piece of 3" fiberglass flowline east of KPK Facility 2

WGS84
#2511

40.09462, -104.77756

±7m

1520

±12

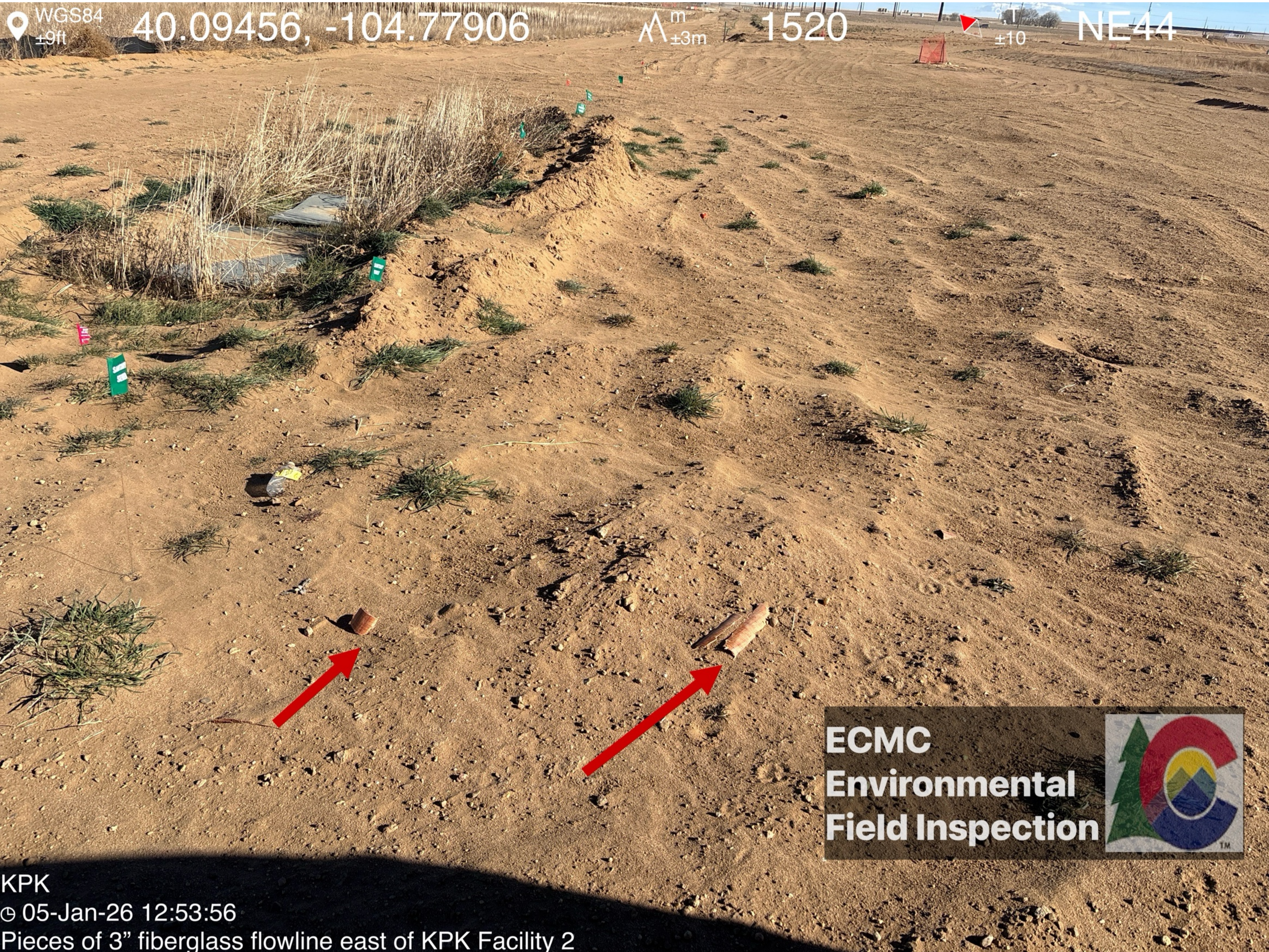
SE110



ECMC
Environmental
Field Inspection



© 05-Jan-26 12:58:05
Piece of 3" fiberglass flowline east of KPK Facility 2



WGS84
±9ft

40.09456, -104.77906

Λ^m
±3m

1520

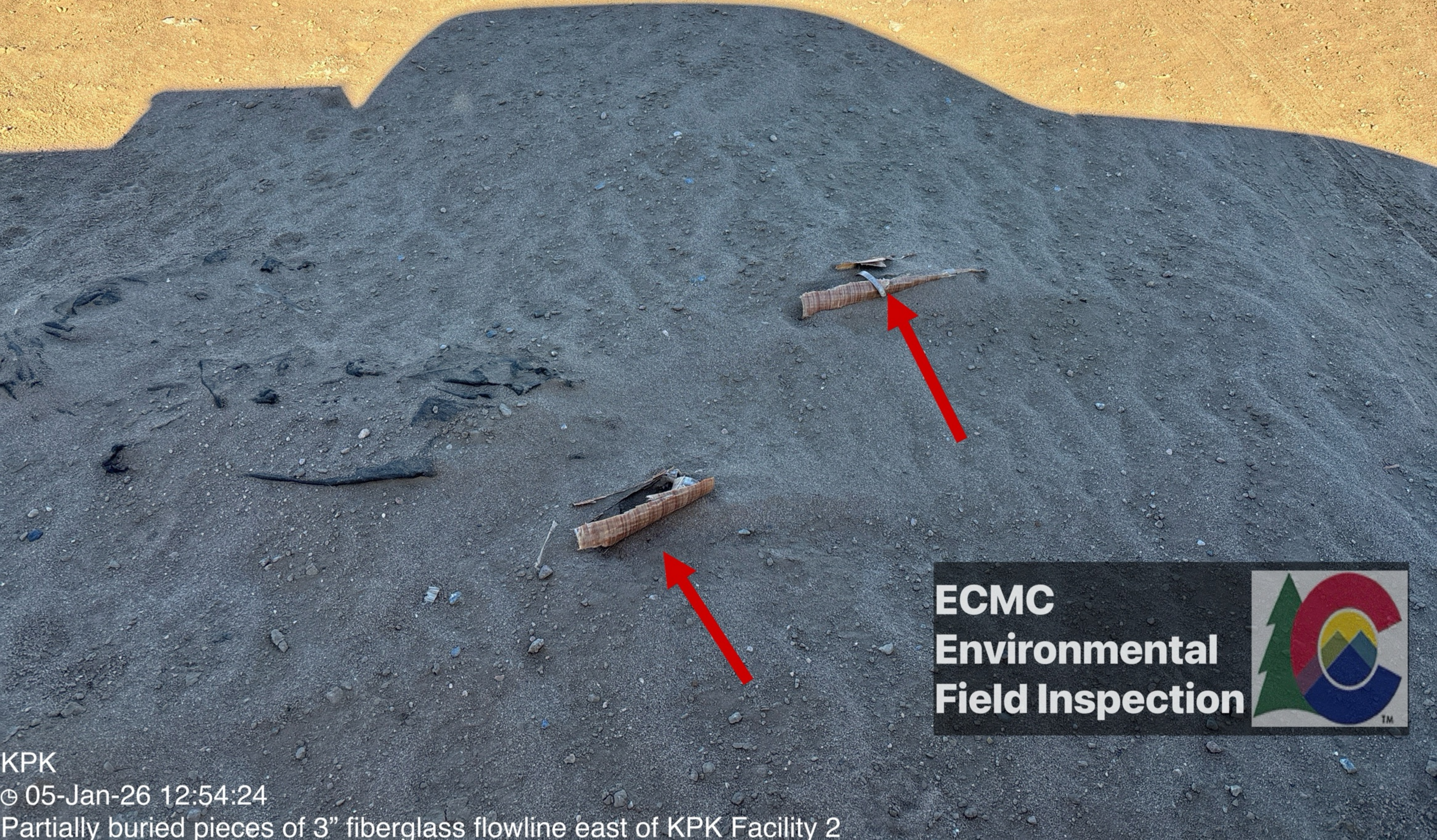
±10

NE44

**ECMC
Environmental
Field Inspection**



KPK
© 05-Jan-26 12:53:56
Pieces of 3" fiberglass flowline east of KPK Facility 2



KPK
© 05-Jan-26 12:54:24
Partially buried pieces of 3" fiberglass flowline east of KPK Facility 2

ECMC
Environmental
Field Inspection





**ECMC
Environmental
Field Inspection**



KPK
05-Jan-26 12:54:59
Pieces of 3" fiberglass flowline east of KPK Facility 2



WGS84
+27ft

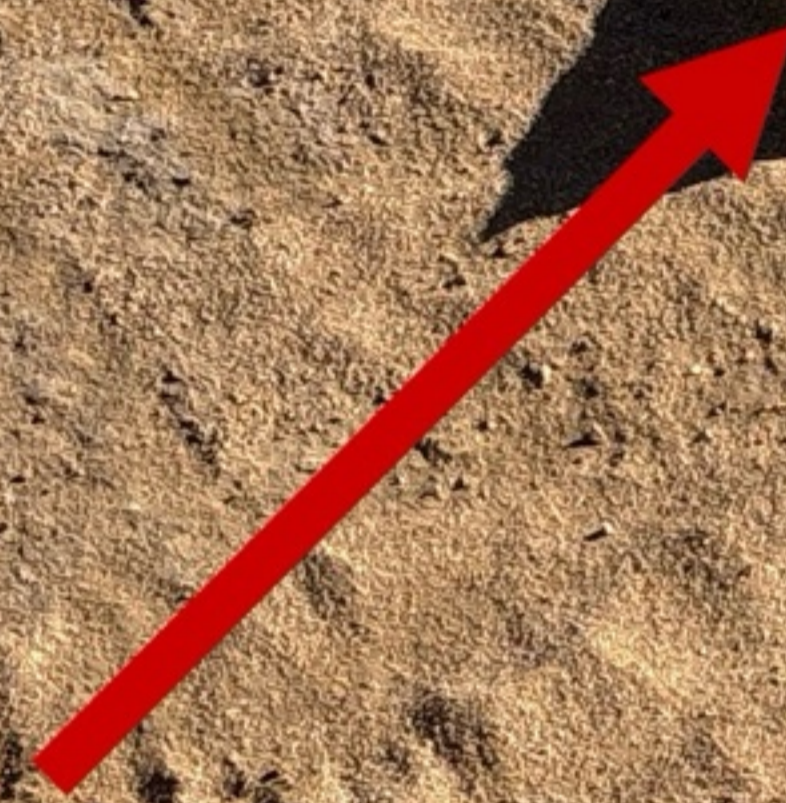
40.09466, -104.77848

Λ^m
±7m

1520

◀ °T
±10

E87



**ECMC
Environmental
Field Inspection**



KPK
© 05-Jan-26 12:55:10
Piece of 3" fiberglass flowline east of KPK Facility 2

WGS84 40.09462, -104.77833 1520 SE158



**ECMC
Environmental
Field Inspection**



KPK
© 05-Jan-26 12:55:23
Piece of 3" fiberglass flowline east of KPK Facility 2