



Legend

 **Site Location**

 N

0 2,000 4,000 Feet

1 inch = 2,000 feet
1:24,000

Service Layer Credits: Sources: Esri, HERE, Garmin, Intermap, increment P Corp., GEBCO, USGS, FAO, NPS, NRCAN, GeoBase, IGN, Kadaster NL, Ordnance Survey, Esri Japan, METI, Esri China (Hong Kong), (c) OpenStreetMap contributors, and the GIS User Community

USGS The National Map: National Boundaries Dataset, 3DEP Elevation Program, Geographic Names Information System, National Hydrography Dataset, National Land Cover Database, National Structures Dataset, and National Transportation Dataset; USGS Global Ecosystems; U.S. Census Bureau TIGER/Line data; USFS Road Data; Natural Earth Data; U.S. Department of State Humanitarian

DATE:	September 2023
DESIGNED BY:	J. Whritenour
DRAWN BY:	L. Reed



Tasman, Inc.
4725 Independence Street
Wheat Ridge, CO 80033

Noble Energy, Inc - DJ Basin
Vern Marshall 1
 NWSW, Section 32, Township 4 North, Range 65 West
 Weld County, Colorado

Site Location Map

Figure
1



SS05-A@4'
(10/06/2025)
PID = 0.0 ppm

SS04-A@4'
(10/03/2025)
PID = 0.1 ppm

FS01-A@7'
(10/03/2025)
PID = 0.4 ppm

SS01-A@4'
(10/03/2025)
PID = 0.0 ppm

BH02@4'
(01/03/2024)
PID = 0.1 ppm

SS02-A@4'
(10/03/2025)
PID = 0.0 ppm

SS03-A@4'
(10/03/2025)
PID = 0.0 ppm

SS01-B@4'
(10/02/2025)
PID = 0.2 ppm

FL01-B@4'
(09/05/2024)
PID = 0.0 ppm

SS04-B@4'
(10/02/2025)
PID = 0.0 ppm

SS02-B@4'
(10/02/2025)
PID = 0.0 ppm

BKG06@2-3'
(09/30/2025)
PID = 0.3 ppm

BKG06@3-4'
(09/30/2025)
PID = 0.4 ppm

BKG06@5-6'
(09/30/2025)
PID = 0.2 ppm

FS01-B@6'
(10/02/2025)
PID = 1.2 ppm

SS03-B@4'
(10/02/2025)
PID = 0.0 ppm

BKG07@2-3'
(09/30/2025)
PID = 0.3 ppm

BKG07@3-4'
(09/30/2025)
PID = 0.2 ppm

BKG07@5-6'
(09/30/2025)
PID = 0.1 ppm

DATE: October 06, 2025
 DESIGNED BY: J. Whritenour
 DRAWN BY: J. Woffinden



Tasman, Inc.
 4725 Independence Street
 Wheat Ridge, CO 80033

Noble Energy, Inc. – 100322
Vern Marshall 1
 NESW, Section 32, Township 4 North, Range 65 West
 Weld County, Colorado

SOIL SAMPLE LOCATION MAP (TANK BATTERY)

FIGURE 2



Legend

- Proposed Soil Boring Location
- Soil Sample Location – Field Screen (Collected via Trimble GPS)
- Soil Sample Location – Lab Analyzed (Collected via Trimble GPS)
- Soil Sample Location – Excavated (Collected via Trimble GPS)
- Excavation Extent (Collected via Trimble GPS)

Notes

- 1) All locations are approximate unless otherwise noted.
- 2) Color coded sample exceedances are in reference to ECMC Table 915-1 Organic Compounds in Soil.

Red text indicates an exceedance of RSSLs
Blue text indicates an exceedance of GSSLs

GPS – Global Positioning System
 PID – Photoionization Detector
 ppm – Parts per million
 GSSLs – Protection of Groundwater Soil Screening Levels
 RSSLs – Residential Soil Screening Levels

0 ft. 20 ft. 40 ft.

Image Source: Google Earth; Google 2021
 Projection: WGS 1984, UTM Zone 13 North

DATE: October 06, 2025

DESIGNED BY: J. Whritenour

DRAWN BY: J. Woffinden

Tasman, Inc.
 4725 Independence Street
 Wheat Ridge, CO 80033

Noble Energy, Inc. – 100322
Vern Marshall 1
 NESW, Section 32, Township 4 North, Range 65 West
 Weld County, Colorado

PROPOSED SOIL BORING
 LOCATION MAP

FIGURE
 3

TABLE 1
FIELD DATA SUMMARY TABLE
NOBLE ENERGY, INC. - 100322
VERN MARSHALL 1, WELD COUNTY, COLORADO
REM # 29144



Sample ID	Sample Date	Depth (ft. bgs)	GPS Data ¹ Latitude/Longitude		PDOP Value	VOC Concentration ² (ppm)
FL01-A@4'	09/05/23	4	40.267301	-104.694078	0.9	0.0
FL01-B@4'	09/05/23	4	40.266256	-104.692391	1.0	0.0
BH01@4'	01/03/24	4	40.266256	-104.692391	NC	0.0
BH01@8'	01/03/24	8	40.266256	-104.692391	NC	0.0
BH02@4'	01/03/24	4	40.266313	-104.692391	NC	0.1
BH02@8'	01/03/24	8	40.266313	-104.692391	NC	0.0
BH03@4'	01/03/24	4	40.266253	-104.692307	NC	0.2
BH03@8'	01/03/24	8	40.266253	-104.692307	NC	0.1
BH04@4'	01/03/24	4	40.266195	-104.692391	NC	0.0
BH04@8'	01/03/24	8	40.266195	-104.692391	NC	0.0
BH05@4'	01/03/24	4	40.266255	-104.692477	NC	0.0
BH05@8'	01/03/24	8	40.266255	-104.692477	NC	0.0
BG01@4'	01/03/24	4	40.266118	-104.692563	NC	0.1
BG01@8'	01/03/24	8	40.266118	-104.692563	NC	0.0
BG02@4'	01/03/24	4	40.266279	-104.692713	NC	0.0
BG02@8'	01/03/24	8	40.266279	-104.692713	NC	0.0
BG03@4'	01/03/24	4	40.266448	-104.692358	NC	0.2
BG03@8'	01/03/24	8	40.266448	-104.692358	NC	0.0
BG04@4'	01/03/24	4	40.266303	-104.692119	NC	0.0
BG04@8'	01/03/24	8	40.266303	-104.692119	NC	0.1
BG05@4'	01/03/24	4	40.266072	-104.692206	NC	0.0
BG05@8'	01/02/24	8	40.266072	-104.692206	NC	1.0
BKG06@2-3'	09/30/25	2 - 3	40.266101	-104.692827	1.0	0.3
BKG06@3-4'	09/30/25	3 - 4	40.266101	-104.692827	1.0	0.4

TABLE 1
FIELD DATA SUMMARY TABLE
NOBLE ENERGY, INC. - 100322
VERN MARSHALL 1, WELD COUNTY, COLORADO
REM # 29144



Sample ID	Sample Date	Depth (ft. bgs)	GPS Data ¹ Latitude/Longitude		PDOP Value	VOC Concentration ² (ppm)
BKG06@5-6'	09/30/25	5 - 6	40.266101	-104.692827	1.0	0.2
BKG07@2-3'	09/30/25	2 - 3	40.265986	-104.692724	0.8	0.3
BKG07@3-4'	09/30/25	3 - 4	40.265986	-104.692724	0.8	0.2
BKG07@5-6'	09/30/25	5 - 6	40.265986	-104.692724	0.8	0.1
2025 Excavation Data						
FS01-B@6'	10/02/25	6	40.266318	-104.692391	NC	1.2
SS01-B@4'	10/02/25	4	40.266251	-104.692391	0.7	0.2
SS02-B@4'	10/02/25	4	40.266272	-104.692394	0.7	0.0
SS03-B@4'	10/02/25	4	40.266250	-104.692363	0.7	0.0
SS04-B@4'	10/02/25	4	40.266231	-104.692392	0.7	0.0
FS01-A@7'	10/03/25	7	40.266318	-104.692391	NC	0.4
SS01-A@4'	10/03/25	4	40.266334	-104.692366	0.7	0.0
SS02-A@4'	10/03/25	4	40.266294	-104.692372	0.8	0.0
SS03-A@4'	10/03/25	4	40.266303	-104.692420	0.8	0.0
SS04-A@4'	10/03/25	4	40.266333	-104.692419	0.8	0.1
SS05-A@4'	10/06/25	4	40.266337	-104.692431	0.8	0.0

Notes:

1. Global Positioning System (GPS) data is provided in decimal degrees using North American Datum (NAD) 83 UTM Zone 13 North.
2. Volatile organic compound (VOC) concentrations are measured in the field using a photoionization detector (PID).

PDOP = Position Dilution of Precision

ppm = Parts per million

ft. = Feet

bgs = Below ground surface

NC = Not collected

Source material characterization sample, excavated and transported off site for disposal.

Material excavated and transported off site for disposal.

TABLE 2
SUMMARY OF VOLATILE ORGANIC SOIL CHEMISTRY DATA
NOBLE ENERGY, INC. - 100322
VERN MARSHALL 1, WELD COUNTY, COLORADO
REM # 29144



Sample ID	Sample Date	Depth (ft. bgs)	Benzene (mg/kg)	Toluene (mg/kg)	Ethyl-Benzene (mg/kg)	Xylenes (mg/kg)	1,2,4-Trimethyl-Benzene (mg/kg)	1,3,5-Trimethyl-Benzene (mg/kg)	Naphthalene (mg/kg)	TPH (mg/kg)	TPH GRO (mg/kg)	TPH DRO (mg/kg)	TPH ORO (mg/kg)
ECMC Table 915-1 Limits (Residential SSL)			1.2	490	5.8	58	30	27	2	500	500**		
ECMC Table 915-1 Limits (Protection of Groundwater SSL)			0.0026	0.69	0.78	9.9	0.0081	0.0087	0.0038	500	500**		
FL01-A@4'	09/05/23	4	<0.0020	<0.0050	<0.0050	<0.010	<0.0050	<0.0050	<0.0038	<50	<0.50	<50	<50
FL01-B@4'	09/05/23	4	<0.0020	<0.0050	<0.0050	<0.010	<0.0050	<0.0050	<0.0038	<50	<0.50	<50	<50
BH01@4'	01/03/24	4	<0.0020	<0.0050	<0.0050	<0.010	<0.0050	<0.0050	<0.0038	<50	<0.50	<50	<50
BH01@8'	01/03/24	8	<0.0020	<0.0050	<0.0050	<0.010	<0.0050	<0.0050	<0.0038	<50	<0.50	<50	<50
BH02@4'	01/03/24	4	<0.0020	<0.0050	<0.0050	<0.010	<0.0050	<0.0050	<0.0038	<50	<0.50	<50	<50
BH02@8'	01/03/24	8	<0.0020	<0.0050	<0.0050	<0.010	<0.0050	<0.0050	<0.0038	<50	<0.50	<50	<50
BH03@4'	01/03/24	4	<0.0020	<0.0050	<0.0050	<0.010	<0.0050	<0.0050	<0.0038	<50	<0.50	<50	<50
BH03@8'	01/03/24	8	<0.0020	<0.0050	<0.0050	<0.010	<0.0050	<0.0050	<0.0038	<50	<0.50	<50	<50
BH04@4'	01/03/24	4	<0.0020	<0.0050	<0.0050	<0.010	<0.0050	<0.0050	<0.0038	<50	<0.50	<50	<50
BH04@8'	01/03/24	8	<0.0020	<0.0050	<0.0050	<0.010	<0.0050	<0.0050	<0.0038	<50	<0.50	<50	<50
BH05@4'	01/03/24	4	<0.0020	<0.0050	<0.0050	<0.010	<0.0050	<0.0050	<0.0038	<50	<0.50	<50	<50
BH05@8'	01/03/24	8	<0.0020	<0.0050	<0.0050	<0.010	<0.0050	<0.0050	<0.0038	<50	<0.50	<50	<50
FS01-B@6'	10/02/25	6	<0.0012	<0.0024	<0.0024	<0.0024	<0.0024	<0.0024	<0.0024	<7.3	<0.24	<4.8	<7.3
SS01-B@4'	10/02/25	4	<0.0011	<0.0022	<0.0022	<0.0022	<0.0022	<0.0022	<0.0022	46.3	<0.22	16.6	29.7
SS02-B@4'	10/02/25	4	<0.00099	<0.0020	<0.0020	<0.0020	<0.0020	<0.0020	<0.0020	<6.3	<0.20	<4.2	<6.3
SS03-B@4'	10/02/25	4	<0.0011	<0.0022	<0.0022	<0.0022	<0.0022	<0.0022	<0.0022	<6.3	<0.22	<4.2	<6.3
SS04-B@4'	10/02/25	4	<0.0011	<0.0022	<0.0022	<0.0022	<0.0022	<0.0022	<0.0022	<6.9	<0.22	<4.6	<6.9
FS01-A@7'	10/03/25	7	<0.0012	<0.0023	<0.0023	<0.0023	<0.0023	<0.0023	<0.0023	31.7	<0.23	12.6	19.1
SS01-A@4'	10/03/25	4	<0.0011	<0.0021	<0.0021	<0.0021	<0.0021	<0.0021	<0.0021	6.22	<0.21	6.22	<6.2
SS02-A@4'	10/03/25	4	<0.0011	<0.0022	<0.0022	<0.0022	<0.0022	<0.0022	<0.0022	5.41	<0.22	5.41	<6.6
SS03-A@4'	10/03/25	4	<0.0011	<0.0021	<0.0021	<0.0021	<0.0021	<0.0021	<0.0021	100.7	<0.21	37.8	62.9
SS04-A@4'	10/03/25	4	<0.0010	<0.0021	<0.0021	<0.0021	<0.0021	<0.0021	<0.0021	611	<0.21	207	404
SS05-A@4'	10/06/25	4	<0.0010	<0.0021	<0.0021	<0.0021	<0.0021	<0.0021	<0.0021	<6.3	<0.21	<4.2	<6.3

Notes:

- 1. Bold** values exceed the ECMC Table 915-1 limit(s).
 - Red & blue highlighted soil analytical values indicate an exceedance of the referenced soil screening level (SSL).
 - ** Summation of GRO+DRO+ORO must be less than 500 mg/kg.
- ECMC = Energy and Carbon Management Commission
(<) = Analytical result is less than the indicated laboratory reporting limit.
TPH-GRO = Total petroleum hydrocarbons - gasoline range organics
TPH-DRO = Total petroleum hydrocarbons - diesel range organics
TPH-ORO = Total petroleum hydrocarbons - oil range organics
mg/kg = Milligrams per kilogram
ft. = Feet

TABLE 2
SUMMARY OF VOLATILE ORGANIC SOIL CHEMISTRY DATA
NOBLE ENERGY, INC. - 100322
VERN MARSHALL 1, WELD COUNTY, COLORADO
REM # 29144



Sample ID	Sample Date	Depth (ft. bgs)	Benzene (mg/kg)	Toluene (mg/kg)	Ethyl-Benzene (mg/kg)	Xylenes (mg/kg)	1,2,4-Trimethyl-Benzene (mg/kg)	1,3,5-Trimethyl-Benzene (mg/kg)	Naphthalene (mg/kg)	TPH (mg/kg)	TPH GRO (mg/kg)	TPH DRO (mg/kg)	TPH ORO (mg/kg)
ECMC Table 915-1 Limits (Residential SSL)			1.2	490	5.8	58	30	27	2	500	500**		
ECMC Table 915-1 Limits (Protection of Groundwater SSL)			0.0026	0.69	0.78	9.9	0.0081	0.0087	0.0038	500	500**		

bgs = Below ground surface

Source material characterization sample, excavated and transported off site for disposal.

Material excavated and transported off site for disposal.

TABLE 3
SUMMARY OF POLYCYCLIC AROMATIC HYDROCARBON SOIL CHEMISTRY DATA
NOBLE ENERGY, INC. - 100322
VERN MARSHALL 1, WELD COUNTY, COLORADO
REM # 29144



Sample ID	Sample Date	Depth (ft. bgs)	Acenaphthene (mg/kg)	Anthracene (mg/kg)	Benzo (a) Anthracene (mg/kg)	Benzo (a) Pyrene (mg/kg)	Benzo (b) Fluoranthene (mg/kg)	Benzo (k) Fluoranthene (mg/kg)	Chrysene (mg/kg)	Dibenzo (a,h) Anthracene (mg/kg)	Fluoranthene (mg/kg)	Fluorene (mg/kg)	Indeno (1,2,3-cd) Pyrene (mg/kg)	Pyrene (mg/kg)	1-Methyl - Naphthalene (mg/kg)	2-Methyl - Naphthalene (mg/kg)
ECMC Table 915-1 Limits (Residential SSL)			360	1800	1.1	0.11	1.1	11	110	0.11	240	240	1.1	180	18	24
ECMC Table 915-1 Limits (Protection of Groundwater SSL)			0.55	5.8	0.011	0.24	0.3	2.9	9	0.096	8.9	0.54	0.98	1.3	0.006	0.019
FL01-A@4'	09/05/23	4	<0.00500	<0.00500	<0.00500	<0.00500	<0.00500	<0.00500	<0.00500	<0.00500	<0.00500	<0.00500	<0.00500	<0.00500	<0.00500	<0.00500
FL01-B@4'	09/05/23	4	0.0340	0.0649	0.176	0.131	0.156	0.0649	0.152	<0.00500	0.365	0.0202	0.0672	0.363	0.00875	<0.00500
BH01@4'	01/03/24	4	<0.00500	<0.00500	<0.00500	<0.00500	<0.00500	<0.00500	<0.00500	<0.00500	<0.00500	<0.00500	<0.00500	<0.00500	<0.00500	<0.00500
BH01@8'	01/03/24	8	<0.00500	<0.00500	<0.00500	<0.00500	<0.00500	<0.00500	<0.00500	<0.00500	<0.00500	<0.00500	<0.00500	<0.00500	<0.00500	<0.00500
BH02@4'	01/03/24	4	<0.00500	0.00881	0.0111	<0.00500	0.00815	<0.00500	<0.00500	<0.00500	0.0383	<0.00500	<0.00500	0.0301	<0.00500	<0.00500
BH02@8'	01/03/24	8	<0.00500	<0.00500	<0.00500	<0.00500	<0.00500	<0.00500	<0.00500	<0.00500	0.0100	<0.00500	<0.00500	0.00676	<0.00500	<0.00500
BH03@4'	01/03/24	4	<0.00500	<0.00500	<0.00500	<0.00500	<0.00500	<0.00500	<0.00500	<0.00500	<0.00500	<0.00500	<0.00500	<0.00500	<0.00500	<0.00500
BH03@8'	01/03/24	8	<0.00500	<0.00500	<0.00500	<0.00500	<0.00500	<0.00500	<0.00500	<0.00500	<0.00500	<0.00500	<0.00500	<0.00500	<0.00500	<0.00500
BH04@4'	01/03/24	4	<0.00500	<0.00500	<0.00500	<0.00500	<0.00500	<0.00500	<0.00500	<0.00500	<0.00500	<0.00500	<0.00500	<0.00500	<0.00500	<0.00500
BH04@8'	01/03/24	8	<0.00500	<0.00500	<0.00500	<0.00500	<0.00500	<0.00500	<0.00500	<0.00500	<0.00500	<0.00500	<0.00500	<0.00500	<0.00500	<0.00500
BH05@4'	01/03/24	4	<0.00500	<0.00500	<0.00500	<0.00500	<0.00500	<0.00500	<0.00500	<0.00500	<0.00500	<0.00500	<0.00500	<0.00500	<0.00500	<0.00500
BH05@8'	01/03/24	8	<0.00500	<0.00500	<0.00500	<0.00500	<0.00500	<0.00500	<0.00500	<0.00500	<0.00500	<0.00500	<0.00500	<0.00500	<0.00500	<0.00500
FS01-B@6'	10/02/25	6	<0.0048	<0.0048	<0.0060	<0.0048	<0.0048	<0.0048	<0.0048	<0.0048	<0.0048	<0.0048	<0.0048	<0.0048	<0.0048	<0.0048
SS01-B@4'	10/02/25	4	<0.0043	<0.0043	<0.0053	<0.0043	<0.0043	<0.0043	<0.0043	<0.0043	<0.0043	<0.0043	<0.0043	<0.0043	<0.0043	<0.0043
SS02-B@4'	10/02/25	4	<0.0041	<0.0041	<0.0051	<0.0041	<0.0041	<0.0041	<0.0041	<0.0041	<0.0041	<0.0041	<0.0041	<0.0041	<0.0041	<0.0041
SS03-B@4'	10/02/25	4	<0.0043	<0.0043	<0.0054	<0.0043	<0.0043	<0.0043	<0.0043	<0.0043	<0.0043	<0.0043	<0.0043	<0.0043	<0.0043	<0.0043
SS04-B@4'	10/02/25	4	<0.0045	<0.0045	<0.0056	<0.0045	<0.0045	<0.0045	<0.0045	<0.0045	<0.0045	<0.0045	<0.0045	<0.0045	<0.0045	<0.0045
FS01-A@7'	10/03/25	7	<0.0047	<0.0047	<0.0058	<0.0047	<0.0047	<0.0047	<0.0047	<0.0047	<0.0047	<0.0047	<0.0047	<0.0047	<0.0047	<0.0047
SS01-A@4'	10/03/25	4	<0.0042	<0.0042	<0.0053	<0.0042	<0.0042	<0.0042	0.0044	<0.0042	0.0061	<0.0042	<0.0042	0.0057	<0.0042	<0.0042
SS02-A@4'	10/03/25	4	<0.0043	<0.0043	<0.0054	<0.0043	<0.0043	<0.0043	<0.0043	<0.0043	<0.0043	<0.0043	<0.0043	<0.0043	<0.0043	<0.0043
SS03-A@4'	10/03/25	4	<0.0042	<0.0042	<0.0052	<0.0042	<0.0042	<0.0042	<0.0042	<0.0042	<0.0042	<0.0042	<0.0042	<0.0042	<0.0042	<0.0042
SS04-A@4'	10/03/25	4	<0.0039	0.0067	0.0197	0.0167	0.0252	0.0073	0.0207	0.0048	0.0327	<0.0039	0.0111	0.0342	<0.0039	<0.0039
SS05-A@4'	10/06/25	4	<0.0042	<0.0042	0.0056	0.0064	<0.0042	<0.0042	0.0063	<0.0042	0.0075	<0.0042	0.0050	0.0082	<0.0042	<0.0021

Notes:

1. Bold values exceed the ECMC Table 915-1 limit(s).
2. Red & blue highlighted soil analytical values indicate an exceedance of the referenced soil screening level (SSL).
3. * Indicates laboratory minimum detection limit in excess of SSL.

ECMC = Energy and Carbon Management Commission

(<) = Analytical result is less than the indicated laboratory reporting limit.

mg/kg = Milligrams per kilogram

ft. = Feet

bgs = Below ground surface

Source material characterization sample, excavated and transported off site for disposal.

Material excavated and transported off site for disposal.

TABLE 4
SUMMARY OF SOIL SUITABILITY FOR RECLAMATION
NOBLE ENERGY, INC. - 100322
VERN MARSHALL 1, WELD COUNTY, COLORADO
REM # 29144



Sample ID	Sample Date	Depth (ft. bgs)	pH (Standard Units)	EC (mmhos/cm)	SAR (Standard Units)	Boron (mg/L)
ECMC Table 915-1 Soil Suitability Limits			6 - 8.3	<4	<6	2
FL01-A@4'	09/05/23	4	6.78	0.421	0.303	0.0854
FL01-B@4'	09/05/23	4	7.60	0.130	0.0484	0.0466
BH01@4'	01/03/24	4	7.71	0.0381	0.0230	<2.00
BH01@8'	01/03/24	8	8.46	0.165	0.776	<2.00
BH02@4'	01/03/24	4	8.18	0.0864	0.0741	<2.00
BH02@8'	01/03/24	8	8.46	0.167	0.734	<2.00
BH03@4'	01/03/24	4	7.29	0.0827	0.106	<2.00
BH03@8'	01/03/24	8	8.52	0.170	0.707	<2.00
BH04@4'	01/03/24	4	8.53	0.142	0.784	<2.00
BH04@8'	01/03/24	8	8.64	0.182	1.22	<2.00
BH05@4'	01/03/24	4	7.75	0.0386	0.126	<2.00
BH05@8'	01/03/24	8	8.62	0.160	0.854	<2.00
FS01-B@6'	10/02/25	6	7.86	0.42	0.985	<0.50
SS01-B@4'	10/02/25	4	7.77	0.45	0.594	<0.50
SS02-B@4'	10/02/25	4	7.54	0.28	0.228	<0.50
SS03-B@4'	10/02/25	4	7.28	0.42	0.907	<0.50
SS04-B@4'	10/02/25	4	7.88	0.53	2.46	<0.50
FS01-A@7'	10/03/25	7	8.10	0.54	1.35	<0.50
SS01-A@4'	10/03/25	4	7.45	0.27	0.136	<0.50
SS02-A@4'	10/03/25	4	7.75	0.35	0.576	<0.50
SS03-A@4'	10/03/25	4	6.61	0.21	0.106	<0.50
SS04-A@4'	10/03/25	4	7.76	0.43	0.532	<0.50
SS05-A@4'	10/06/25	4	7.83	0.37	0.388	<0.50
BG01@4'	01/03/24	4	7.83	0.0212	0.0748	NA
BG01@8'	01/03/24	8	8.60	0.175	1.15	NA
BG02@4'	01/03/24	4	7.48	0.0234	0.0632	NA
BG02@8'	01/03/24	8	8.61	0.176	1.05	NA
BG03@4'	01/03/24	4	8.15	0.0838	0.640	NA
BG03@8'	01/03/24	8	8.70	0.183	1.28	NA
BG04@4'	01/03/24	4	8.24	0.232	1.62	NA
BG04@8'	01/03/24	8	8.67	0.214	1.71	NA
BG05@4'	01/03/24	4	8.28	0.146	0.314	NA
BG05@8'	01/03/24	8	8.70	0.205	1.49	NA
BKG06@2-3'	09/30/25	2 - 3	7.98	3.2	11.3	<0.50
BKG06@3-4'	09/30/25	3 - 4	7.99	4.4	11.1	<0.50

TABLE 4
SUMMARY OF SOIL SUITABILITY FOR RECLAMATION
NOBLE ENERGY, INC. - 100322
VERN MARSHALL 1, WELD COUNTY, COLORADO
REM # 29144



Sample ID	Sample Date	Depth (ft. bgs)	pH (Standard Units)	EC (mmhos/cm)	SAR (Standard Units)	Boron (mg/L)
ECMC Table 915-1 Soil Suitability Limits			6 - 8.3	<4	<6	2
BKG06@5-6'	09/30/25	5 - 6	7.74	3.5	7.49	<0.50
BKG07@2-3'	09/30/25	2 - 3	7.74	3.1	5.04	<0.50
BKG07@3-4'	09/30/25	3 - 4	7.75	1.7	3.78	<0.50
BKG07@5-6'	09/30/25	5 - 6	7.64	2.1	3.67	<0.50
Maximum Background Concentration			8.70	-	-	-

Notes:

1. **Bold** faced values exceed the ECMC Table 915-1 limit(s), but are within background concentrations.
2. **Bold** faced values exceed the ECMC Table 915-1 limit(s) and native background concentrations.
3. Brown highlighted soil analytical values indicate a regulatory exceedance.

ECMC = Energy and Carbon Management Commission

(<) = Analytical result is less than the indicated laboratory reporting limit.

mg/L = Milligrams per liter

ft. = Feet

bgs = Below ground surface

NA = Not analyzed

EC = Electrical conductivity

SAR = Sodium adsorption ratio

mmhos/cm = Millimohs per centimeter

Material excavated and transported off site for disposal.

TABLE 5
SUMMARY OF METALS IN SOIL CHEMISTRY DATA
NOBLE ENERGY, INC. - 100322
VERN MARSHALL 1, WELD COUNTY, COLORADO
REM # 29144



Sample ID	Sample Date	Depth (ft. bgs)	Arsenic (mg/kg)	Barium (mg/kg)	Cadmium (mg/kg)	Chromium (VI) ⁶ (mg/kg)	Copper (mg/kg)	Lead (mg/kg)	Nickel (mg/kg)	Selenium (mg/kg)	Silver (mg/kg)	Zinc (mg/kg)
ECMC Table 915-1 Limits (Residential SSL)			0.68	15000	71	0.3	3100	400	1500	390	390	23000
ECMC Table 915-1 Limits (Protection of Groundwater SSL)			0.29	82	0.38	0.00067	46	14	26	0.26	0.8	370
BG04@8'	01/03/24	8	3.01	NA	NA	NA	NA	NA	NA	NA	NA	NA
BG05@4'	01/03/24	4	2.10	NA	NA	NA	NA	NA	NA	NA	NA	NA
BG05@8'	01/03/24	8	2.59	NA	NA	NA	NA	NA	NA	NA	NA	NA
BKG06@2-3'	09/30/25	2 - 3	1.7	53.9	<0.08	<0.43*	4.8	5.5	4.6	0.11	<0.080	19.4
BKG06@3-4'	09/30/25	3 - 4	2.2	77.5	0.13	<0.46*	5.7	6.7	6.1	0.12	<0.084	25.0
BKG06@5-6'	09/30/25	5 - 6	4.0	125	0.11	<0.49*	13.1	11.1	15.4	0.15	<0.10	43.0
BKG07@2-3'	09/30/25	2 - 3	3.1	188	0.25	<0.45*	12.8	11.3	10.0	0.22	<0.088	46.5
BKG07@3-4'	09/30/25	3 - 4	2.4	164	0.12	<0.45*	5.6	6.4	6.6	0.19	<0.070	25.7
BKG07@5-6'	09/30/25	5 - 6	3.4	301	0.17	<0.48*	10.8	9.5	13.2	<0.18	<0.091	39.6
1.25x Maximum Background Concentration			5.0	376	-	-	-	-	-	0.28	-	-

Notes:

1. **Bold** faced values exceed the ECMC Table 915-1 limit(s), but are within 1.25x background concentrations.
2. **Red** faced values exceed the ECMC Table 915-1 limit(s) and native background concentrations.
3. Red & blue highlighted soil analytical values indicate an exceedance of the referenced soil screening level (SSL).
4. Reporting limit used for 1.25 multiplier when all background results for a specific metal are non-detect.
5. * Indicates laboratory minimum detection limit in excess of SSL.
6. Compound falls within the ECMC Table 915-1 footnote 9.

ECMC = Energy & Carbon Management Commission

(<) = Analytical result is less than the indicated laboratory reporting limit.

mg/kg = Milligrams per kilogram

ft. = Feet

bgs = Below ground surface

NA = Not analyzed

Material excavated and transported off site for disposal.

Noble Excavation Field Form



Project: Vern Marshall 1 Date: 9/29/2025 08:00

Personnel: E. Lambert, J. Smithe Weather: Sunny 70s

Task Description: Flowline excavation

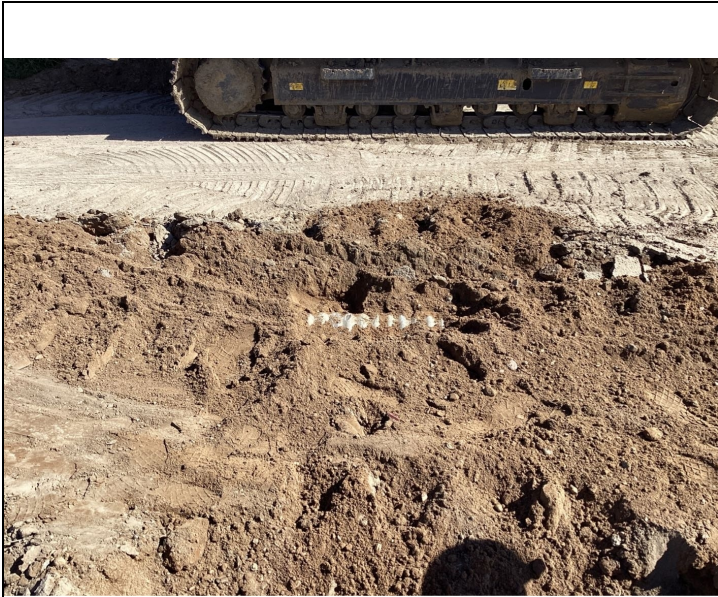
Description of Activities:

Time	Description
	9/29/25
08:00	On site, completed JSA, premarked dig locatioNs
	There is still infrastructure in / around dig area. Flowline is abandoned in place at 4'.
	Two 15x15x6' excavations proposed around FL01-B & BH02
10:26	Tom marking out lines running west of FL01-B excavation. Crew removing fencing between points.
11:18	Starting to dig at BH02 (-A sample IDs)
11:30	Culvert pipe exposed near BH02. Pausing dig to get in contact with LO
11:48	Crew is digging to find a connecting piece of culvert to partially remove it.
12:30	Hydravac arrived on site To expose lines west of FL01-B
	Coated line exposed in BH02 excavation. PACM sample will be collected first thing tomorrow morning.
	Two trucks (20 CY) out to buffalo ridge today.
	9/30/25
07:58	On site. Matt Bush was on site this morning to collect PACM sample.
08:36	Hydrovac crew starting on FL01-B exc - moving 10 feet east of lines towards FL01-B center point
10:04	PACM sample was ND - operator starting back up on BH02 exc
12:38	Hydrovac full and done for the day. They will be back tomorrow 10/1 to wrap up
12:49	Crew uncovered another coated line near south wall of BH02 exc. MB on site to collect PACM sample.
	One truck (10 CY) out to buffalo ridge today.
14:58	Finished hand augering two backgrounds (BKG06-BKG07) samples and wrapped up on site for the day.
	10/1/25
06:43	Line tested on 9/30/25 had ACM, worked paused for the day on BH02 exc. Hydrovac still on site to continue on FL01-B exc.
10:35	MB tested 2 more coated lines that were exposed by hydrovac.
	10/2/25
07:53	On site, completed JSA, met with crew
	hydrovac working on FL01-B. Plan is to sample that exc today.
08:11	Abatement crew on site to start work on ACM line in BH02 exc
08:53	Hydrovac full, leaving site to dump. They still need to get to 6'.
11:14	Collected sidewall samples at 4'
12:12	Hydrovac back on site

Photographic Log

Photo 1 Date&Time: 2025-09-29 11:30

Photo 2 Date&Time: 2025-09-30 13:24



Notes Culvert in BH02 dig area

Notes BKG06

Photo 3 Date&Time: 2025-09-30 13:48

Photo 4 Date&Time: 2025-10-02 11:18



Notes BKG07

Notes SS01-B@4'

Photographic Log

Photo 5 Date&Time: 2025-10-02 11:19

Photo 6 Date&Time: 2025-10-02 11:20



Notes SS02-B@4'

Notes SS03-B@4'

Photo 7 Date&Time: 2025-10-02 11:21

Photo 8 Date&Time: 2025-10-02 13:29



Notes SS04-B@4'

Notes FS01-B@6'

Photographic Log

Photo 9 Date&Time: 2025-10-03 10:34

Photo 10 Date&Time: 2025-10-03 10:35



Notes SS01-A@4'

Notes SS02-A@4'

Photo 11 Date&Time: 2025-10-03 10:37

Photo 12 Date&Time: 2025-10-03 10:39



Notes SS03-A@4'

Notes SS04-A@4'

Photographic Log

Photo 13 Date&Time: 2025-10-03 10:42

Photo 14 Date&Time: 2025-10-06 13:23



Notes FS01-A@7'

Notes SS05-A@4'

Photo 15 Date&Time: _____

Photo 16 Date&Time: _____



Notes

Notes

