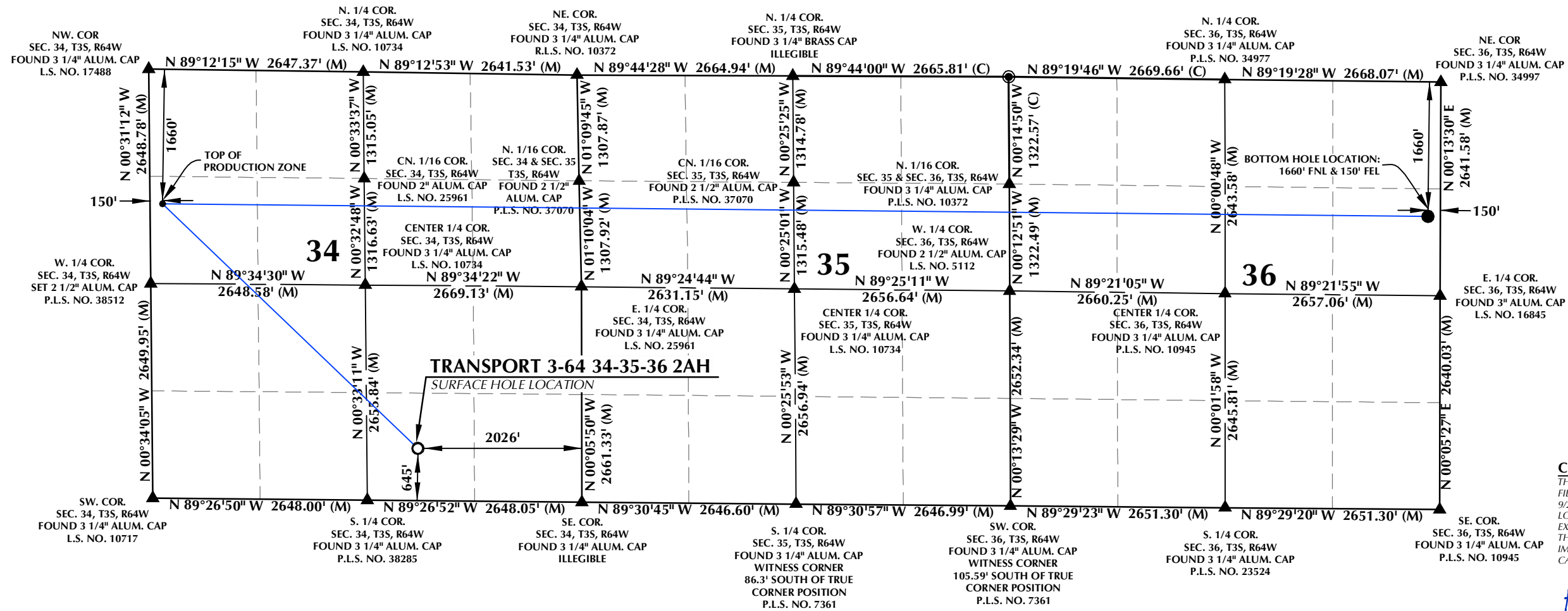


# T3S, R64W



**SURFACE HOLE LOCATION: NAD 83**  
 GROUND ELEVATION= 5572.1'  
 LATITUDE= 39.740435°  
 LONGITUDE= -104.534171°  
 LATITUDE= 39°44'25.566"  
 LONGITUDE= -104°32'03.014"

**TOP OF PRODUCTION ZONE: NAD 83**  
 LATITUDE= 39.748826°  
 LONGITUDE= -104.545270°  
 LATITUDE= 39°44'55.774"  
 LONGITUDE= -104°32'42.971"

**BOTTOM HOLE LOCATION: NAD 83**  
 LATITUDE= 39.747922°  
 LONGITUDE= -104.489676°  
 LATITUDE= 39°44'52.521"  
 LONGITUDE= -104°29'22.835"

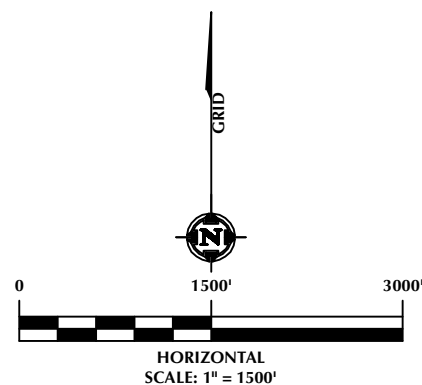
**CERTIFICATE OF SURVEYOR:**  
 THIS WELL LOCATION CERTIFICATE WAS PREPARED FROM AN ACTUAL FIELD SURVEY BY ME OR UNDER MY PERSONAL SUPERVISION ON 9/24/24, AND CORRECTLY SHOWS THE SURFACE HOLE LOCATION AS STAKED ON THE GROUND IN RELATION TO THE EXISTING SECTION LINE MONUMENTATION SHOWN HEREON. THIS CERTIFICATE DOES NOT REPRESENT A LAND SURVEY OR IMPROVEMENT SURVEY PLAT AS DEFINED BY C.R.S. §§ 38-1-101 AND CANNOT BE RELIED UPON TO DETERMINE OWNERSHIP.

*Randall K. French*  
 RANDALL K. FRENCH  
 PROFESSIONAL LAND SURVEYOR  
 COLORADO REGISTRATION NUMBER 38512  
 10/1/25

**NOTICE:**  
 ACCORDING TO COLORADO STATE LAW YOU MUST COMMENCE A LEGAL ACTION BASED UPON ANY DEFECT IN THIS SURVEY WITHIN THREE YEARS OF YOUR FIRST DISCOVERY OF SUCH DEFECT. IN NO EVENT MAY ANY ACTION BASED UPON ANY DEFECT IN THIS SURVEY BE COMMENCED MORE THAN TEN YEARS FROM THE DATE OF THE CERTIFICATION SHOWN HEREON.

**NOTES:**

- ▲ INDICATES SECTION CORNER.
- INDICATES CALCULATED CORNER.
- ELEVATION BASED ON NAVD88 (GEOID18).
- BASIS OF BEARINGS DERIVED FROM COLORADO COORDINATE SYSTEM OF 1983, NORTH ZONE.
- ALL MEASURED DISTANCES ARE GRID.  
 COMBINED SCALE FACTOR: .99973125 CALCULATED FROM THE W. 1/4 CORNER OF SECTION 34, T3S, R64W.
- OPERATOR: JASON CURNUTT / PDOP = 1.9/ STAKING DATE: 9/24/24
- WELL FOOTAGES ARE MEASURED AT RIGHT ANGLES TO THE SECTION LINES.



**609 CONSULTING, LLC**  
 LOVELAND OFFICE  
 6706 North Franklin Avenue  
 Loveland, Colorado 80538  
 Phone 970-776-4331  
 SHERIDAN OFFICE  
 1095 Saberton Avenue  
 Sheridan, Wyoming 82801  
 Phone 307-674-0609

Prepared For:  
  
 CRESTONE PEAK RESOURCES, LLC  
 555 17TH STREET, SUITE 3700  
 DENVER, CO 80202

**WELL PAD - BENNET D**

**TRANSPORT 3-64 34-35-36 2AH**  
**WELL LOCATION CERTIFICATE**  
 645' FSL & 2026' FEL (SWSE) (SURFACE HOLE LOCATION)  
 LOCATED IN SECTION 34  
 1660' FNL & 150' FWL (SW/NW) (TOP OF PRODUCTION ZONE)  
 LOCATED IN SECTION 34  
 1660' FNL & 150' FEL (SENE) (BOTTOM HOLE LOCATION)  
 LOCATED IN SECTION 36  
 T3S, R64W, 6TH P.M.  
 ADAMS COUNTY, COLORADO

DRAFTED BY:	SJM	CHECKED BY:	RKF	SHEET NO.:
DATE DRAFTED:	10/29/24	DATE SURVEYED:	10/11/24	<b>1</b>
REVISED:	10/1/25	FILE NAME:	23-182	1 OF 1

K:\CIVITAS RESOURCES\2023\1023\_182\_50236\_T3S\_R64W\_SEC\_36\PLATS\BENNET D\TRANSPORT 3-64 34-35-36 2AH.dwg, 10/2/2025 1:03:38 PM, smf