

DOWDY 6-4-10 (12336045_FL): Abandon in Place Layout

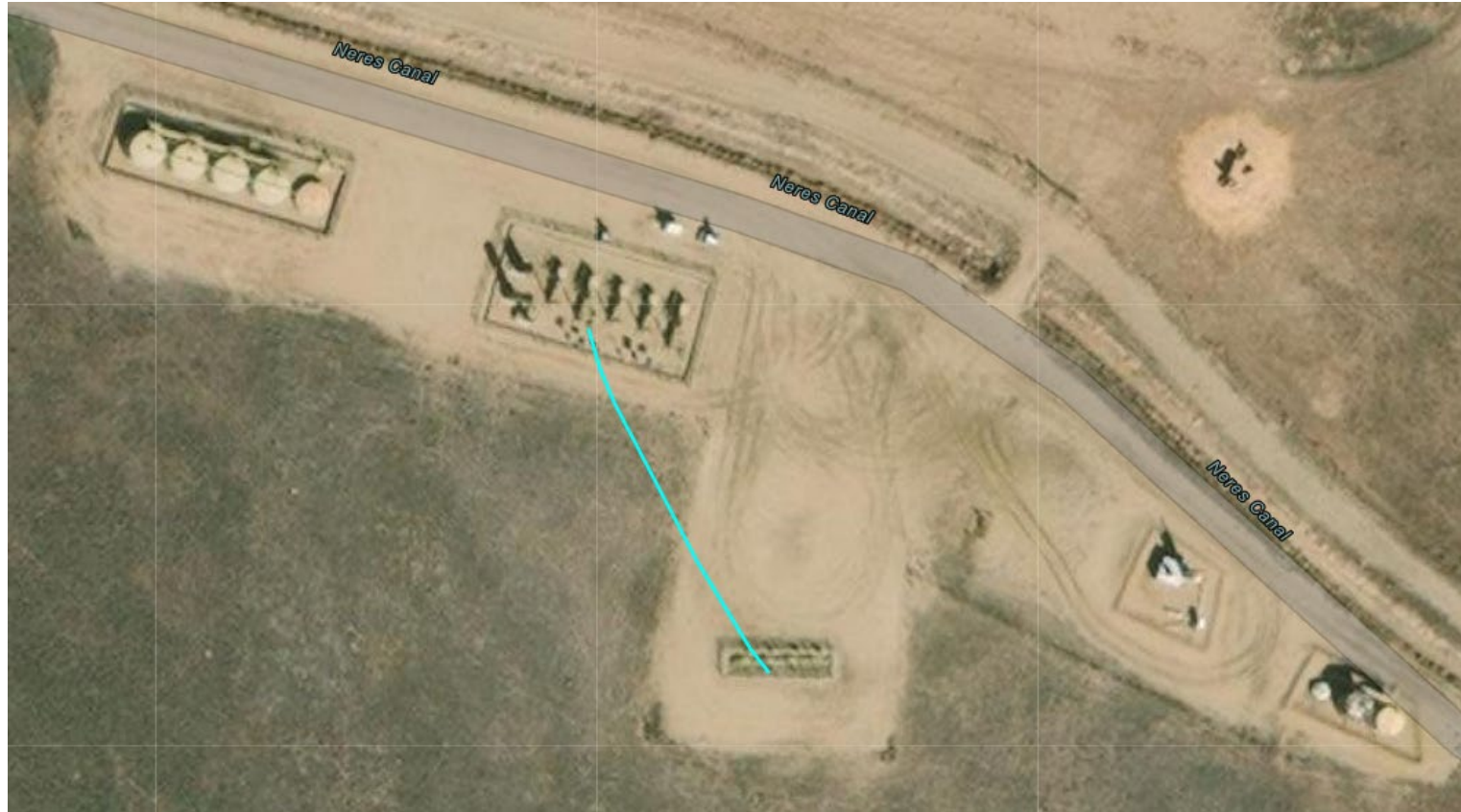
40.157445, -104.644486

NENE Sec. 10 T2N, R65W, 6th PM

Weld County, Colorado

Crestone Peak Resources (10633)

Flowline Unique OperFeatID	Line Type	Start Location Latitude	Start Location Longitude	End Location Latitude (Cut Point)	End Location Longitude (Cut Point)	Segment Length (ft)	Segment	Abandonment Type
12336045_FL	Multiphase	40.157445	-104.644486	40.157857	-104.644788	170	Blue	Abandon in Place



DOWDY 8-2-10 (12336044_FL): Abandon in Place Layout

40.157451, -104.644412

NENE Sec. 10 T2N, R65W, 6th PM

Weld County, Colorado

Crestone Peak Resources (10633)

Flowline Unique OperFeatID	Line Type	Start Location Latitude	Start Location Longitude	End Location Latitude (Cut Point)	End Location Longitude (Cut Point)	Segment Length (ft)	Segment	Abandonment Type
12336044_FL	Multiphase	40.157451	-104.644412	40.157852	-104.64475	175	Blue	Abandon in Place

