



WILDLIFE SURVEY SUMMARY – T155-1

Bishop Loss of Containment
Galeton, CO

EXECUTIVE SUMMARY

The T155-1 parcel was visited three times between May 2 and June 11, 2025, to assess potential impacts related to the Bishop Loss of Containment. On May 2, the wildlife team conducted a residential wildlife survey during the initial residential assessment. CTEH’s and H2’s evaluators determined that no impacts were observed within the parcel and therefore, no cleaning scope was developed for this parcel. On May 27, the wildlife team conducted a follow-up wildlife survey to assess and monitor wildlife impacts, and the parcel was accessed to conduct an ongoing wildlife surveillance survey on June 11, 2025.

This parcel is situated within mule deer severe winter range high priority habitat. Operator incorporated best management practices to minimize the likelihood of potential impacts to wildlife resources. To date, wildlife assessments have been undertaken on May 2, 27, and June 11, 2025 no potential impacts to wildlife resources have been observed.

WILDLIFE FINDINGS

Property T #	Survey Date	Activity Type	Survey Notes
T155-1	May 2, 2025	Initial Assessment - Residential	Assessed as potential decontamination site. Multiple active robin (MBTA) nests in trees in front yard near residential structure, nest avoidance is flagged. Inactive raptor nesting S and SE within 0.5mi Multiple inactive songbird nests and areas of potential small mammal refugia present. Small herd (7) mule deer was observed directly west of the parcel boundary utilizing the riparian corridor.
	May 27, 2025	Follow-up Assessment - Residential	Site surveyed prior to potential cleaning or remediation activities, known nests resurveyed, wildlife activity communicated to cleaning teams.
	June 11, 2025	Ongoing Wildlife Surveillance Survey	Survey conducted to detect wildlife use or sensitive species presence throughout the project areas. Also, to visually assess terrestrial habitat.

METHODS

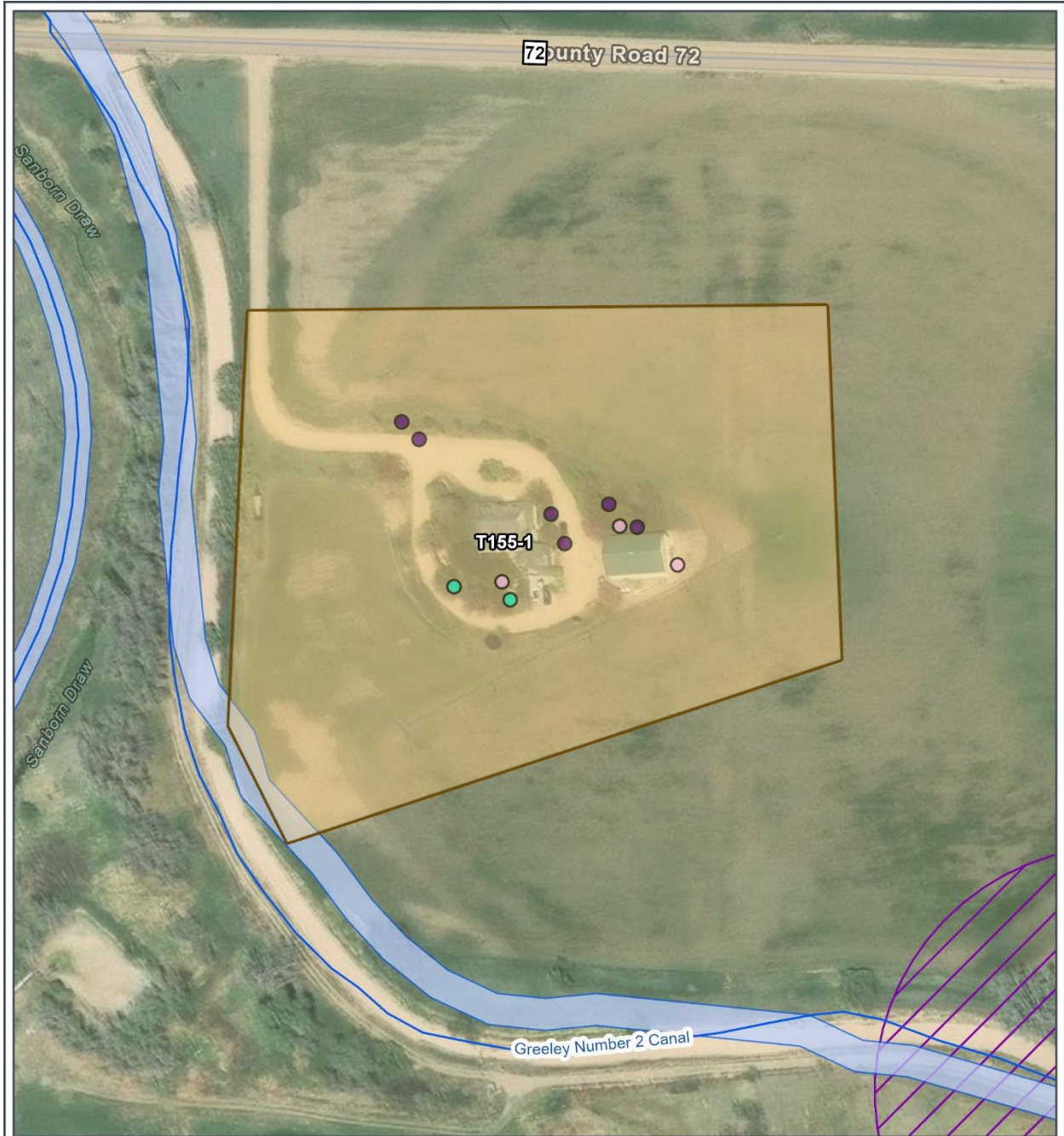
Initial Assessment – Residential Wildlife Survey: A systematic pedestrian survey was conducted covering all structures, debris piles, machinery, and vegetative cover within the residential parcel. The survey included a visual inspection for evidence of wildlife use, including nests, mammal refugia, amphibian and reptiles’ presence, and carcasses. Nest searches included observation of trees, shrubs, tall grasses, building exteriors, and other structural or mechanical cavities for both active and inactive songbird and raptor nests. Ground level searches focused on potential nesting sites in tall native grasses, in shrubs, or in burrows. Each nest or potential nest site was located, photographed, and its status documented. Potential small mammal refugia was inspected by searching parcel for debris piles, discarded machinery and equipment, burrows, and patches of dense vegetation that could provide cover to mammals, amphibians, and reptiles. Each location was located, photographed, and described in field notes as a potential site, confirmed mammal observation, or a sign of mammal use. Throughout the survey, the parcel was scanned for carcasses, signs of moribund wildlife, and oiled wildlife, with findings documented in accordance with Wildlife Response Plan. Additionally, a desktop assessment was conducted prior to the pedestrian survey to

review locations and statuses of known raptor nests within 0.5 mile of the parcel. These data informed targeted nest searches and were re-checked prior to any cleaning activities to ensure compliance with seasonal timing restrictions and Colorado Parks and Wildlife buffer requirements.

Follow-Up Assessment Residential (Pre-cleaning): Systematic pedestrian survey covering all structures, debris piles, and vegetative cover within the residential parcel. Visual inspection was conducted for nests, mammal activity, carcasses, and oiled wildlife. Additionally, a follow-up check of the status of known raptor nests within 0.5 miles of the parcel was conducted. Targeted areas of previously documented activity were revisited to confirm no changes had occurred that would delay or modify planned cleaning efforts.

Ongoing Wildlife Surveillance Survey: Regular reconnaissance surveys were conducted to detect presence of wildlife species, including sensitive or protected species, within and adjacent to the parcel. Surveys included visual scans of terrestrial and aquatic habitats, opportunistic observations of wildlife sign (tracks, scat, burrows), and documentation of any changes in habitat conditions since the previous visit.

SURVEY MAP



**BISHOP LOSS OF CONTAINMENT
T155-1: 6.29 Acres**



- | | |
|--------------------------|----------------------------|
| Incident Location | NHD Flowline |
| Active Songbird Nest | Local Road |
| Inactive Songbird Nest | Parcel Boundary |
| Undetermined Nest Status | NWI Wetland |
| | Priority Wildlife Corridor |

WELD County, Colorado
NAD 1983 UTM Zone 13N

- | | |
|--|-------------------------------|
| | Raptor Nest |
| | Raptor Nest Buffer (0.5-mile) |

Base Map: CTEH,
accessed December 2025
Updated: 12/12/2025
Project No. 620901.001
File: Parcel Mapping

