

NOBLE ENERGY, INC

Third and Fourth Quarter 2025 Groundwater Monitoring Summary

December 16, 2025

Bockius 15-1, 8, Pfannebecker C14-32D Tank Battery

SENE 15 T4N R64W

Remediation # 28820

This groundwater monitoring summary has been prepared by Fremont Environmental, Inc. (Fremont) for the former Bockius 15-1, 8, Pfannebecker C14-32D tank battery site.

Site History and Background

On January 16, 2025, impacted soil related to a historical release was identified following laboratory analysis of stained soil encountered ~0.5 feet below ground surface (bgs) during reclamation of the former Bockius 15-1,8, Pfannebecker C14-32 D, C15-22 tank battery pad. Soil impacts were delineated, and 2,860 cubic yards of impacted soil were removed in February 2025.

Groundwater was encountered at an approximate depth of 15 feet bgs during excavation activities. The laboratory analysis of a groundwater sample collected from the base of the excavation (GWS) indicated that the groundwater exceeded the ECMC Table 915-1 organic standards for benzene. On July 7, 2025, five groundwater monitoring wells (MW-1 through MW-5) were installed to delineate the magnitude and extent of groundwater impacts. The boring logs for these wells are attached to this report.

Groundwater Monitoring Activities

Third Quarter

Third quarter 2025 groundwater sampling was completed at the location on July 10, 2025. Five monitoring wells (MW-1 to MW-5) were sampled and submitted to PACE Analytical Laboratory for analysis of benzene, toluene, ethylbenzene, total xylenes (BTEX), naphthalene, 1,2,4-trimethylbenzene (TMB), and 1,3,5-TMB by EPA Method 8260B, semi volatile organic compounds by EPA Method 8270E-SIM, chloride ion & sulfate ion by EPA Method 9056A, total dissolved solids (TDS) by EPA Method 2540 C-2011. Laboratory analytical results indicate that the following samples exceeded ECMC Table 915-1 Limits:

- **MW-1:** Benzene = 88 µg/L, Chloride Ion = 367 mg/L, Sulfate Ion = 1090 mg/L.
- **MW-2:** Chloride Ion = 343 mg/L, Sulfate Ion = 650 mg/L.
- **MW-3:** Benzene = 8.68 µg/L, Chloride Ion = 296 mg/L, Sulfate Ion = 719 mg/L.
- **MW-4:** 1,2,4-Trimethylbenzene = 89.6 µg/L, Chloride Ion = 352 mg/L, Sulfate Ion = 617 mg/L.
- **MW-5:** Chloride Ion = 269 mg/L, Sulfate Ion = 781 mg/L.

Fourth Quarter

Fourth quarter 2025 groundwater sampling was completed at the location on October 6, 2025. Five monitoring wells (MW-1 to MW-5) were sampled and submitted to Origins Laboratory for analysis of benzene, toluene, ethylbenzene, total xylenes (BTEX), naphthalene, 1,2,4-trimethylbenzene (TMB), and 1,3,5-TMB by EPA Method 8260D, semi volatile organic compounds by EPA Method 8270E-SIM, chloride ion & sulfate ion by EPA Method 300.0, total dissolved solids (TDS) by EPA Method 2540 C-2011. Laboratory analytical results indicate that the following samples exceeded ECMC Table 915-1 Limits:

- **MW-1:** Chloride Ion = 402 mg/L, Sulfate Ion = 681 mg/L.
- **MW-2:** Chloride Ion = 337 mg/L, Sulfate Ion = 567 mg/L.
- **MW-3:** Chloride Ion = 389 mg/L, Sulfate Ion = 684 mg/L.
- **MW-4:** Chloride Ion = 386 mg/L, Sulfate Ion = 598 mg/L.
- **MW-5:** Chloride Ion = 321 mg/L, Sulfate Ion = 486 mg/L.

The groundwater analytical data are summarized in Tables 5 and 6. The site location is illustrated on Figure 1, monitoring well locations are illustrated on Figure 2, groundwater elevations are illustrated on Figure 3, and groundwater chemistry is illustrated on Figure 4. A copy of the laboratory report, quality control data, and chain-of-custody documentation is included separately.

Current Remediation Strategy and Path Forward

Impacted soil remains in situ in six locations in the N, E, and S excavation sidewalls and in one location in the east excavation floor. Conventional excavation is limited to the N and E by underground utilities, and to the S by overhead and underground utilities. The Operator proposes to treat residual soil impacts in place with a soil vapor extraction system. System wells are proposed on Figure 6 of the attached Q4 2025 figure suite.

The Operator proposes installing one groundwater monitoring well upgradient (south of MW-4), away from the release location, in an area undisturbed by oil and gas activity to characterize native groundwater conditions for background comparison.

Monitored natural attenuation (MNA) will be implemented at the site to address dissolved-phase groundwater impacts. No further action designation will be requested from the ECMC when remediation criteria have been achieved and following the observation of four consecutive quarters of groundwater compliant with the applicable ECMC Table 915-1 standards under static conditions at the site. The fourth quarter 2025 sampling event marks zero quarters of ECMC-compliant groundwater at the site for inorganic constituents.

TABLE OF CONTENTS

Tables

- 1 Field Data Summary Table
- 2 Summary Of Volatile Organic Soil Chemistry Data
- 3 Summary Of Polycyclic Aromatic Hydrocarbon Soil Chemistry Data
- 4 Summary Of Soil Suitability for Reclamation
- 5 Summary Of Metals in Soil Chemistry Data
- 6 Summary of Organic Groundwater Chemistry Data
- 7 Summary of Inorganic Groundwater Chemistry Data

Figures

Q3 2025

- 1 Site Location Map
- 2 Site Map
- 3 Organic Soil Chemistry Map
- 4 Metals And Inorganic Soil Chemistry Map
- 5 Inferred Groundwater Contour Map
- 6 Groundwater Chemistry With Benzene Iso-Concentration Map
- 7 Groundwater Chemistry With 1,2,4-Trimethylbenzene Iso-Concentration Map

Q4 2025

- 1 Site Location Map
- 2 Site Map
- 3 Inferred Groundwater Contour Map
- 4 Groundwater Chemistry Map
- 5 Monitoring Wells and Proposed System Wells Map

Boring Logs

- 1 MW-1
- 2 MW-2
- 3 MW-3
- 4 MW-4
- 5 MW-5

ANALYTICAL TABLES

TABLE 1
FIELD DATA SUMMARY TABLE
NOBLE 100322
BOCKIUS 15-1,8, PFANNEBECKER C14-32, WELD COUNTY, COLORADO
REM # 28820

Sample ID	Sample Date	Depth (ft)	GPS Data Latitude/Longitude		PDOP Value	VOC Concentration (ppm)
AST01@0.5'	11/16/2023	0.5	40.3127514	-104.5275597	-	27.4
AST02@0.5'	11/16/2023	0.5	40.3128035	-104.5275515	-	40.0
AST03@0.5'	11/16/2023	0.5	40.3126971	-104.5275635	-	71.6
DLO1@4'	11/16/2023	4	-	-	-	-
PWV01-B@5'	11/16/2023	5	40.3127988	-104.5276384	-	26.7
PWV01-N@4'	11/16/2023	4	40.3128312	-104.5276217	-	32.0
PWV01-NE@4'	11/16/2023	4	40.3127964	-104.5275845	-	22.0
PWV01-NW@4'	11/16/2023	4	40.3127882	-104.5276517	-	10.2
PWV01-S@4'	11/16/2023	4	40.3126831	-104.5276301	-	35.2
PWV01-SE@4'	11/16/2023	4	40.3127134	-104.5276034	-	17.6
PWV01-SW@4'	11/16/2023	4	40.3127243	-104.5276615	-	3.7
SEP01-DL@4'	11/16/2023	4	40.3126953	-104.5278590	-	-
SEP02-DL@4'	11/16/2023	4	40.3127290	-104.5278635	-	-
WC01@1Ft	01/16/2025	1	40.3126690	-104.5276715	0.90	7.0
Base@15Ft	01/23/2025	15	40.3127064	-104.52765	1.10	0.4
Backfill	01/29/2025	Grab	-	-	-	0.0
NBase 12Ft	01/29/2025	12	-	-	-	24.6
E Base 01 15Ft	02/05/2025	15	40.3126531	-104.52758	-	147.6
E Base 02 15Ft	02/05/2025	15	40.3126925	-104.52758	-	45.7
E Base 03 15Ft	02/05/2025	15	40.3127217	-104.52756	-	4.6
NBase01 15Ft	-	15	40.3127375	-104.52758	-	3.7
NBase02 15Ft	02/06/2025	15	40.3127314	-104.52767	-	3.1
NWall01 14Ft	02/06/2025	14	40.3127652	-104.52759	0.90	3.7
NWall02 14Ft	02/06/2025	14	40.3127750	-104.52764	0.90	1.7
NWall04 9Ft	02/06/2025	9	40.3127652	-104.52759	0.90	1.0
NWall05 9Ft	02/06/2025	9	40.3127652	-104.52759	0.90	6.7
SBase01 15FT	-	15	40.3126382	-104.52758	0.90	891.0

TABLE 1
FIELD DATA SUMMARY TABLE
NOBLE 100322
BOCKIUS 15-1,8, PFANNEBECKER C14-32, WELD COUNTY, COLORADO
REM # 28820

Sample ID	Sample Date	Depth (ft)	GPS Data Latitude/Longitude		PDOP Value	VOC Concentration (ppm)
SBase02 15Ft	02/06/2025	15	40.3126552	-104.52767	-	611.0
SWall01 14Ft	02/06/2025	14	40.3126356	-104.52757	0.80	1597.0
SWall02 14Ft	02/06/2025	14	40.3126235	-104.52763	0.80	148.0
SWall04 9Ft	02/06/2025	9	40.3126356	-104.52757	0.80	1423.0
SWall05 9Ft	02/06/2025	9	40.3126235	-104.52763	0.80	54.6
Nwall03 14Ft	02/07/2025	14	40.3127814	-104.52771	0.90	0.1
Nwall06 9Ft	02/07/2025	9	40.3127814	-104.52771	0.90	0.0
Swall03 14Ft	02/07/2025	14	40.3126235	-104.52775	0.80	0.2
Swall06 9Ft	02/07/2025	9	40.3126235	-104.52775	0.80	0.4
Wbase01 15Ft	02/07/2025	15	40.3127334	-104.52773	-	0.0
Wbase02 15Ft	02/07/2025	15	40.3126700	-104.52774	-	0.0
Wwall01 14Ft	02/07/2025	14	40.3127604	-104.52777	0.90	0.0
Wwall02 14Ft	02/07/2025	14	40.3127161	-104.52779	1.00	0.0
Wwall03 14Ft	02/07/2025	14	40.3126577	-104.52781	1.10	0.0
Wwall04 9Ft	02/07/2025	9	40.3127604	-104.52777	0.90	0.0
Wwall05 9Ft	02/07/2025	9	40.3127161	-104.52779	1.00	0.0
Wwall06 9Ft	02/07/2025	9	40.3126577	-104.52781	1.10	0.0
EWall 01 14Ft	02/11/2025	14	40.3126655	-104.52754	0.80	2.6
EWall 02 14Ft	02/11/2025	14	40.3127182	-104.52753	0.80	97.0
EWall 03 9Ft	02/11/2025	9	40.3126655	-104.52754	0.80	0.2
EWall 04 9Ft	02/11/2025	9	40.3127182	-104.52753	0.80	1.8
MW-1	7/7/2025	20	40.3127005	-104.52767	0.80	Refer to Boring Log
MW-2	7/7/2025	20	40.3127845	-104.52766	0.90	Refer to Boring Log
MW-3	7/7/2025	20	40.3126923	-104.52752	0.80	Refer to Boring Log
MW-4	7/7/2025	20	40.3126142	-104.52767	0.80	Refer to Boring Log
MW-5	7/7/2025	20	40.3127041	-104.52780	0.80	Refer to Boring Log

TABLE 1
FIELD DATA SUMMARY TABLE
NOBLE 100322
BOCKIUS 15-1,8, PFANNEBECKER C14-32, WELD COUNTY, COLORADO
REM # 28820

Sample ID	Sample Date	Depth (ft)	GPS Data Latitude/Longitude		PDOP Value	VOC Concentration (ppm)
BKG01	11/16/2023	0.5, 4, 5	40.3131941	-104.52765	-	0.0
BKG02	11/16/2023	0.5, 4, 5	40.3131266	-104.52785	-	0.0
BKG03	11/16/2023	0.5, 4, 5	40.3129794	-104.52805	-	0.0
BKG04	11/16/2023	0.5, 4, 5	40.3133250	-104.52788	-	0.0
BKG05	11/16/2023	0.5, 4, 5	40.3132146	-104.52810	-	0.0

1. Global Positioning System (GPS) data is provided in decimal degrees using North American Datum (NAD) 83 UTMZone 13 North.

2. Volatile organic compound (VOC) concentrations are measured in the field using a photoionization detector (PID).

PDOP = Position Dilution of Precision

ppm = Parts per million

in. = Inches

ft. = Feet

bgs = Below ground surface

Source material characterization sample, excavated and transported off site for disposal.

Material excavated and transported off site for disposal.

TABLE 2
SUMMARY OF VOLATILE ORGANIC SOIL CHEMISTRY DATA
NOBLE 100322
BOCKIUS 15-1,8, PFANNEBECKER C14-32, WELD COUNTY, COLORADO
REM # 28820

Sample ID	Sample Date	Depth (ft)	Benzene (mg/kg)	Toluene (mg/kg)	Ethyl-Benzene (mg/kg)	Xylenes (mg/kg)	1,2,4-Trimethyl-Benzene (mg/kg)	1,3,5-Trimethyl-Benzene (mg/kg)	Naphthalene (mg/kg)	TPH (mg/kg)	TPH GRO (mg/kg)	TPH DRO (mg/kg)	TPH ORO (mg/kg)
ECMC Table 915-1 Limits (Residential SSL)			1.2	490	5.8	58	30	27	2	500	500**		
ECMC Table 915-1 Limits (Protection of Groundwater SSL)			0.0026	0.69	0.78	9.9	0.0081	0.0087	0.0038	500	500**		
AST01@0.5'	11/16/2023	0.5	<0.0020	<0.0050	<0.0050	<0.010	<0.0050	<0.0050	<0.0038	<500	<0.50	74	<50
AST02@0.5'	11/16/2023	0.5	<0.0020	<0.0050	<0.0050	<0.010	0.0058	0.0059	<0.0038	<500	<0.50	86	<50
AST03@0.5'	11/16/2023	0.5	<0.0020	<0.0050	<0.0050	<0.010	<0.0050	<0.0050	<0.0038	<500	<0.50	<50	<50
DL01@4'	11/16/2023	4	<0.0020	<0.0050	<0.0050	<0.010	0.0056	<0.0050	<0.0038	<500	<0.50	<50	<50
PWV01-B@5'	11/16/2023	5	<0.0020	<0.0050	<0.0050	<0.010	<0.0050	<0.0050	<0.0038	<500	<0.50	<50	<50
PWV01-N@4'	11/16/2023	4	<0.0020	<0.0050	<0.0050	<0.010	<0.0050	<0.0050	<0.0038	<500	<0.50	<50	<50
PWV01-NE@4'	11/16/2023	4	<0.0020	<0.0050	<0.0050	<0.010	<0.0050	<0.0050	<0.0038	<500	<0.50	<50	<50
PWV01-NW@4'	11/16/2023	4	<0.0020	<0.0050	<0.0050	<0.010	<0.0050	<0.0050	<0.0038	<500	<0.50	<50	<50
PWV01-S@4'	11/16/2023	4	<0.0020	<0.0050	<0.0050	<0.010	<0.0050	<0.0050	<0.0038	<500	<0.50	<50	<50
PWV01-SE@4'	11/16/2023	4	<0.0020	<0.0050	<0.0050	<0.010	<0.0050	<0.0050	<0.0038	<500	<0.50	<50	<50
PWV01-SW@4'	11/16/2023	4	<0.0020	<0.0050	<0.0050	<0.010	<0.0050	<0.0050	<0.0038	<500	<0.50	<50	<50
SEP01-DL@4'	11/16/2023	4	<0.0020	<0.0050	<0.0050	<0.010	<0.0050	<0.0050	<0.0038	<500	<0.50	<50	<50
SEP02-DL@4'	11/16/2023	4	<0.0020	<0.0050	<0.0050	<0.010	<0.0050	<0.0050	<0.0038	<500	<0.50	<50	<50
WC01@1Ft	01/16/2025	1	<0.0020	<0.0050	<0.0050	<0.010	0.015	<0.0050	<0.0038	<500	<0.50	<50	<50
Base@15Ft	01/23/2025	15	<0.0020	<0.0050	<0.0050	<0.010	<0.0050	<0.0050	<0.0038	<500	<0.50	<50	<50
Backfill	01/29/2025	Grab	<0.0020	<0.0050	<0.0050	<0.010	<0.0050	<0.0050	<0.0038	<500	<0.50	<50	<50
NBase 12Ft	01/29/2025	12	0.0092	<0.0050	<0.0050	<0.010	<0.0050	<0.0050	<0.0038	<500	<0.50	<50	<50
E Base 01 15Ft	02/05/2025	15	<0.0020	<0.0050	0.012	0.045	0.085	3.7	0.016	500	400	100	<50
E Base 02 15Ft	02/05/2025	15	<0.0020	<0.0050	<0.0050	<0.010	<0.0050	<0.0050	<0.0038	<500	<0.50	<50	<50
E Base 03 15Ft	02/05/2025	15	<0.0020	<0.0050	<0.0050	<0.010	<0.0050	0.0058	<0.0038	<500	0.68	<50	<50
NBase02 15Ft	02/06/2025	15	<0.0020	<0.0050	<0.0050	<0.010	<0.0050	<0.0050	<0.0038	<500	<0.50	<50	<50
NWall01 14Ft	02/06/2025	14	<0.0020	<0.0050	<0.0050	<0.010	0.0086	<0.0050	<0.0038	<500	<0.50	<50	<50
NWall02 14Ft	02/06/2025	14	<0.0020	<0.0050	<0.0050	<0.010	<0.0050	<0.0050	<0.0038	<500	<0.50	<50	<50
NWall04 9Ft	02/06/2025	9	<0.0020	<0.0050	<0.0050	<0.010	<0.0050	<0.0050	<0.0038	<500	<0.50	<50	<50
NWall05 9Ft	02/06/2025	9	<0.0020	<0.0050	<0.0050	<0.010	0.022	0.33	<0.0038	<500	95	<50	<50
SBase02 15Ft	02/06/2025	15	<0.0020	<0.0050	<0.0050	<0.010	<0.0050	<0.0050	<0.0038	<500	<0.50	240	<50
SWall01 14Ft	02/06/2025	14	<0.20	0.62	5.3	66	46	25	2.6	5210	2100	2700	410
SWall02 14Ft	02/06/2025	14	<0.0020	<0.0050	0.42	4.2	21	0.42	0.4	3200	620	2200	380
SWall04 9Ft	02/06/2025	9	<0.20	<0.50	2.5	11	42	6.9	2.5	3850	1000	2400	450
SWall05 9Ft	02/06/2025	9	<0.0020	<0.0050	<0.0050	<0.010	0.012	<0.0050	<0.0038	<500	2.3	<50	<50
Nwall03 14Ft	02/07/2025	14	<0.0020	<0.0050	<0.0050	<0.010	<0.0050	<0.0050	<0.0038	<500	<0.50	<50	<50
Nwall06 9Ft	02/07/2025	9	<0.0020	<0.0050	<0.0050	<0.010	<0.0050	<0.0050	<0.0038	<500	<0.50	<50	<50

TABLE 2
SUMMARY OF VOLATILE ORGANIC SOIL CHEMISTRY DATA
NOBLE 100322
BOCKIUS 15-1,8, PFANNEBECKER C14-32, WELD COUNTY, COLORADO
REM # 28820

Sample ID	Sample Date	Depth (ft)	Benzene (mg/kg)	Toluene (mg/kg)	Ethyl-Benzene (mg/kg)	Xylenes (mg/kg)	1,2,4-Trimethyl-Benzene (mg/kg)	1,3,5-Trimethyl-Benzene (mg/kg)	Naphthalene (mg/kg)	TPH (mg/kg)	TPH GRO (mg/kg)	TPH DRO (mg/kg)	TPH ORO (mg/kg)
ECMC Table 915-1 Limits (Residential SSL)			1.2	490	5.8	58	30	27	2	500	500**		
ECMC Table 915-1 Limits (Protection of Groundwater SSL)			0.0026	0.69	0.78	9.9	0.0081	0.0087	0.0038	500	500**		
Swal03 14Ft	02/07/2025	14	<0.0020	<0.0050	<0.0050	<0.010	<0.0050	<0.0050	<0.0038	<500	<0.50	<50	<50
Swal06 9Ft	02/07/2025	9	<0.0020	<0.0050	<0.0050	<0.010	<0.0050	<0.0050	<0.0038	<500	<0.50	<50	<50
Wbase01 15Ft	02/07/2025	15	<0.0020	<0.0050	<0.0050	<0.010	<0.0050	<0.0050	<0.0038	<500	<0.50	<50	<50
Wbase02 15Ft	02/07/2025	15	<0.0020	<0.0050	<0.0050	<0.010	<0.0050	<0.0050	<0.0038	<500	<0.50	<50	<50
Wwall01 14Ft	02/07/2025	14	<0.0020	<0.0050	<0.0050	<0.010	<0.0050	<0.0050	<0.0038	<500	<0.50	<50	<50
Wwall02 14Ft	02/07/2025	14	<0.0020	<0.0050	<0.0050	<0.010	<0.0050	<0.0050	<0.0038	<500	<0.50	<50	<50
Wwall03 14Ft	02/07/2025	14	<0.0020	<0.0050	<0.0050	<0.010	<0.0050	<0.0050	<0.0038	<500	<0.50	<50	<50
Wwall04 9Ft	02/07/2025	9	<0.0020	<0.0050	<0.0050	<0.010	<0.0050	<0.0050	<0.0038	<500	<0.50	<50	<50
Wwall05 9Ft	02/07/2025	9	<0.0020	<0.0050	<0.0050	<0.010	<0.0050	<0.0050	<0.0038	<500	<0.50	<50	<50
Wwall06 9Ft	02/07/2025	9	<0.0020	<0.0050	<0.0050	<0.010	<0.0050	<0.0050	<0.0038	<500	<0.50	<50	<50
EWal01 14Ft	02/11/2025	14	<0.0020	<0.0050	<0.0050	<0.010	<0.0050	<0.0050	<0.0038	<500	<0.50	<50	<50
EWal02 14Ft	02/11/2025	14	<0.0020	<0.0050	<0.0050	<0.010	<0.0050	<0.0050	<0.0038	<500	7.3	<50	<50
EWal03 9Ft	02/11/2025	9	<0.0020	<0.0050	<0.0050	<0.010	<0.0050	<0.0050	<0.0038	<500	<0.50	<50	<50
EWal04 9Ft	02/11/2025	9	<0.0020	<0.0050	<0.0050	<0.010	<0.0050	<0.0050	<0.0038	<500	<0.50	<50	<50
MW-1 14FT	07/07/2025	14	<0.00100	<0.0100	<0.0100	<0.100	<0.00500	<0.00500	<0.00300	<500	<2.50	<4.00	<4.00
MW-2 12FT	07/07/2025	12	<0.00100	<0.0100	<0.0100	<0.100	<0.00500	<0.00500	<0.00300	<500	<0.100	<4.00	<4.00
MW-3 12FT	07/07/2025	12	<0.00100	<0.0100	<0.0100	<0.100	<0.00500	<0.00500	0.00303	<500	2.59	231	97.1
MW-4 5FT	07/07/2025	5	0.0255	<0.200	0.975	<2.00	5.1	0.256	4.45	5397	957	3400	1040
MW-4 14FT	07/07/2025	14	<0.0100	<0.100	1.46	<1.00	12.9	<0.0500	0.299	1299	557	592	150
MW-5 14FT	07/07/2025	14	<0.00100	<0.0100	<0.0100	<0.100	<0.00500	<0.00500	<0.00300	<500	<0.100	<4.00	<4.00

1. Bold values exceed the ECMC Table 915-1 limit(s)

2. Red & blue highlighted soil analytical values indicate an exceedance of the referenced soil screening level (SSL)

3. * Indicates laboratory minimum detection limit in excess of SSL

4. ** Summation of GRO+DRO+ORO must be less than 500 mg/kg

(<) = Analytical result is less than the indicated laboratory reporting limit.

TPH-GRO = Total petroleum hydrocarbons - gasoline range organics

TPH-DRO = Total petroleum hydrocarbons - diesel range organics

TPH-ORO = Total petroleum hydrocarbons - oil range organics

mg/kg = Milligrams per kilogram

ft. = Feet

bgs = Below ground surface

NA - Not analyzed

Source material characterization sample, excavated and transported off site for disposal.

Material excavated and transported off site for disposal.

TABLE 3
SUMMARY OF POLYCYCLIC AROMATIC HYDROCARBON SOIL CHEMISTRY DATA
NOBLE 100322
BOCKIUS 15-1,8, PFANNEBECKER C14-32, WELD COUNTY, COLORADO
REM # 28820

Sample ID	Sample Date	Depth (ft)	Acenaphthene (mg/kg)	Anthracene (mg/kg)	Benzo (a) Anthracene (mg/kg)	Benzo (a) Pyrene (mg/kg)	Benzo (b) Fluoranthene (mg/kg)	Benzo (k) Fluoranthene (mg/kg)	Chrysene (mg/kg)	Dibenzo (a,h) Anthracene (mg/kg)	Fluoranthene (mg/kg)	Fluorene (mg/kg)	Indeno (1,2,3-cd) Pyrene (mg/kg)	Pyrene (mg/kg)	1-Methyl - Naphthalene (mg/kg)	2-Methyl- Naphthalene (mg/kg)
ECMC Table 915-1 Limits (Residential SSL)			360	1800	1.1	0.11	1.1	11	110	0.11	240	240	1.1	180	18	24
ECMC Table 915-1 Limits (Protection of Groundwater SSL)			0.55	5.8	0.011	0.24	0.3	2.9	9	0.096	8.9	0.54	0.98	1.3	0.006	0.019
EWall 01 14Ft	02/11/2025	14	<0.00500	<0.00500	<0.00500	<0.00500	<0.00500	<0.00500	<0.00500	<0.00500	<0.00500	<0.00500	<0.00500	<0.00500	<0.00500	<0.00500
EWall 02 14Ft	02/11/2025	14	<0.00500	<0.00500	<0.00500	<0.00500	<0.00500	<0.00500	<0.00500	<0.00500	<0.00500	<0.00500	<0.00500	<0.00500	0.0177	0.0244
EWall 03 9Ft	02/11/2025	9	<0.00500	<0.00500	<0.00500	<0.00500	<0.00500	<0.00500	<0.00500	<0.00500	<0.00500	<0.00500	<0.00500	<0.00500	<0.00500	<0.00500
EWall 04 9Ft	02/11/2025	9	<0.00500	<0.00500	<0.00500	<0.00500	<0.00500	<0.00500	<0.00500	<0.00500	<0.00500	<0.00500	<0.00500	<0.00500	<0.00500	<0.00500
MW-1 14FT	07/07/2025	14	<0.0330	<0.0330	<0.00600	<0.0330	<0.0330	<0.0330	<0.0330	<0.0330	<0.0330	<0.0330	<0.0330	<0.0330	<0.00300	<0.0120
MW-2 12FT	07/07/2025	12	<0.0330	<0.0330	<0.00600	<0.0330	<0.0330	<0.0330	<0.0330	<0.0330	<0.0330	<0.0330	<0.0330	<0.0330	<0.00300	<0.0120
MW-3 12FT	07/07/2025	12	<0.0330	<0.0330	<0.00600	<0.0330	<0.0330	<0.0330	<0.0330	<0.0330	<0.0330	<0.0330	<0.0330	<0.0330	0.00599	<0.0120
MW-4 5FT	07/07/2025	5	<0.660	<0.0330	<0.00600	<0.0330	<0.0330	<0.0330	0.111	<0.0330	<0.0330	1.53	<0.0330	0.0689	8.12	20.4
MW-4 14FT	07/07/2025	14	<0.0330	<0.0330	<0.00600	<0.0330	<0.0330	<0.0330	<0.0330	<0.0330	<0.0330	0.0805	<0.0330	<0.0330	0.41	1.13
MW-5 14FT	07/07/2025	14	<0.0330	<0.0330	<0.00600	<0.0330	<0.0330	<0.0330	<0.0330	<0.0330	<0.0330	<0.0330	<0.0330	<0.0330	<0.00300	<0.0120

1. Bold values exceed the ECMC Table 915-1 limit(s)

2. Red & blue highlighted soil analytical values indicate an exceedance of the referenced soil screening level (SSL)

3. * Indicates laboratory minimum detection limit in excess of SSL

4. ** Summation of GRO+DRO+ORO must be less than 500 mg/kg

(<) = Analytical result is less than the indicated laboratory reporting limit.

TPH-GRO = Total petroleum hydrocarbons - gasoline range organics

TPH-DRO = Total petroleum hydrocarbons - diesel range organics

TPH-ORO = Total petroleum hydrocarbons - oil range organics

mg/kg = Milligrams per kilogram

ft. = Feet

bgs = Below ground surface

NA - Not analyzed

Source material characterization sample, excavated and transported off site for disposal.

Material excavated and transported off site for disposal.

TABLE 4
SUMMARY OF SOIL SUITABILITY FOR RECLAMATION
NOBLE 100322
BOCKIUS 15-1,8, PFANNEBECKER C14-32, WELD COUNTY, COLORADO
REM # 28820

Sample ID	Sample Date	Depth (ft)	pH (Standard Units)	EC (mmhos/cm)	SAR (Standard Units)	Boron (mg/L)
ECMC Table 915-1 Soil Suitability Limits			6 - 8.3	<4	<6	2
AST01@0.5'	11/16/2023	0.5	8.13	0.172	0.707	<2.00
AST02@0.5'	11/16/2023	0.5	8.24	0.102	0.576	<2.00
AST03@0.5'	11/16/2023	0.5	8.62	0.123	0.606	<2.00
DL01@4'	11/16/2023	4	8.02	0.884	7.39	<2.00
PWV01-N@4'	11/16/2023	4	8.05	0.606	1.21	<2.00
PWV01-NE@4'	11/16/2023	4	7.9	1.28	3.05	<2.00
PWV01-NW@4'	11/16/2023	4	8.74	0.258	2	<2.00
PWV01-S@4'	11/16/2023	4	7.89	0.365	0.452	<2.00
PWV01-SE@4'	11/16/2023	4	8.19	0.892	2.83	<2.00
PWV01-SW@4'	11/16/2023	4	7.89	1.83	2.24	<2.00
SEP01-DL@4'	11/16/2023	4	8.1	1.09	1.12	<2.00
SEP02-DL@4'	11/16/2023	4	8.08	0.758	0.474	<2.00
PWV01-B@5'	11/16/2023	5	8.14	0.24	0.488	<2.00
WC01@1Ft	01/16/2025	1	8.93	0.457	2.21	<2.00
Base@15Ft	01/23/2025	15	8.47	0.466	4.11	<2.00
Backfill	01/29/2025	Grab	8.21	0.275	0.923	<2.00
NBase 12Ft	01/29/2025	12	8.54	0.546	5.69	<2.00
E Base 01 15Ft	02/05/2025	15	7.88	0.936	3.48	<2.00
E Base 02 15Ft	02/05/2025	15	7.53	0.895	3.34	<2.00
E Base 03 15Ft	02/05/2025	15	7.66	0.894	3.48	<2.00
NBase02 15Ft	02/06/2025	15	8.15	1.58	1.47	<2.00
NWall01 14Ft	02/06/2025	14	8.43	1.22	8.84	<2.00
NWall02 14Ft	02/06/2025	14	8.28	0.67	3.32	<2.00
NWall04 9Ft	02/06/2025	9	8.59	0.844	4.73	<2.00
NWall05 9Ft	02/06/2025	9	8.08	0.763	1.12	<2.00
SBase02 15Ft	02/06/2025	15	7.95	1.48	1.68	<2.00
SWall01 14Ft	02/06/2025	14	8.39	1.09	10.4	<2.00

TABLE 4
SUMMARY OF SOIL SUITABILITY FOR RECLAMATION
NOBLE 100322
BOCKIUS 15-1,8, PFANNEBECKER C14-32, WELD COUNTY, COLORADO
REM # 28820

Sample ID	Sample Date	Depth (ft)	pH (Standard Units)	EC (mmhos/cm)	SAR (Standard Units)	Boron (mg/L)
ECMC Table 915-1 Soil Suitability Limits			6 - 8.3	<4	<6	2
SWall02 14Ft	02/06/2025	14	8.87	0.795	7.1	<2.00
SWall04 9Ft	02/06/2025	9	8.72	0.742	3.71	<2.00
SWall05 9Ft	02/06/2025	9	8.98	0.868	7.49	<2.00
Nwall03 14Ft	02/07/2025	14	8.50	1.01	5.52	<2.00
Nwall06 9Ft	02/07/2025	9	7.69	2.86	2.86	<2.00
Swall03 14Ft	02/07/2025	14	8.42	2.12	11.8	<2.00
Swall06 9Ft	02/07/2025	9	8.51	2.21	12.5	<2.00
Wbase01 15Ft	02/07/2025	15	8.79	0.631	3.89	<2.00
Wbase02 15Ft	02/07/2025	15	8.90	0.489	4.94	<2.00
Wwall01 14Ft	02/07/2025	14	8.41	1.41	7.37	<2.00
Wwall02 14Ft	02/07/2025	14	9.00	0.526	2.28	<2.00
Wwall03 14Ft	02/07/2025	14	8.73	0.829	8.27	<2.00
Wwall04 9Ft	02/07/2025	9	8.54	1.29	8.68	<2.00
Wwall05 9Ft	02/07/2025	9	8.40	0.891	7.23	<2.00
Wwall06 9Ft	02/07/2025	9	8.55	0.99	0.359	<2.00
EWall 01 14Ft	02/11/2025	14	9.18	0.583	0.489	<2.00
EWall 02 14Ft	02/11/2025	14	8.27	0.704	3.07	<2.00
EWall 03 9Ft	02/11/2025	9	8.88	0.606	1.73	<2.00
EWall 04 9Ft	02/11/2025	9	8.45	1.06	6.76	<2.00
MW-1 14FT	07/07/2025	14	8.67	0.964	6.11	<0.100
MW-2 12FT	07/07/2025	12	8.38	0.769	5.82	<0.100
MW-3 12FT	07/07/2025	12	8.56	0.521	5.3	<0.100
MW-4 5FT	07/07/2025	5	8.11	0.999	8.72	<0.100
MW-4 14FT	07/07/2025	14	8.45	1.18	8.59	<0.100
MW-5 14FT	07/07/2025	14	8.55	0.552	3.97	<0.100
BKG01@0.5'	11/16/2023	0.5	7.95	1.18	3.28	<2.00
BKG02@0.5'	11/16/2023	0.5	7.97	1.22	3.16	<2.00

TABLE 4
SUMMARY OF SOIL SUITABILITY FOR RECLAMATION
NOBLE 100322
BOCKIUS 15-1,8, PFANNEBECKER C14-32, WELD COUNTY, COLORADO
REM # 28820

Sample ID	Sample Date	Depth (ft)	pH (Standard Units)	EC (mmhos/cm)	SAR (Standard Units)	Boron (mg/L)
ECMC Table 915-1 Soil Suitability Limits			6 - 8.3	<4	<6	2
BKG03@0.5'	11/16/2023	0.5	7.9	1.47	2.98	<2.00
BKG04@0.5'	11/16/2023	0.5	8.14	0.857	2.26	<2.00
BKG05@0.5'	11/16/2023	0.5	7.75	1.58	2.57	<2.00
BKG01@4'	11/16/2023	4	7.87	1.48	3.58	<2.00
BKG02@4'	11/16/2023	4	7.97	1.21	2.31	<2.00
BKG03@4'	11/16/2023	4	8.59	1.21	2.9	<2.00
BKG04@4'	11/16/2023	4	8.04	0.958	2.32	<2.00
BKG05@4'	11/16/2023	4	7.89	1.33	2.5	<2.00
BKG01@5'	11/16/2023	5	7.78	1.82	2.99	<2.00
BKG02@5'	11/16/2023	5	8.01	1.09	2.97	<2.00
BKG03@5'	11/16/2023	5	7.97	1.04	2.82	<2.00
BKG04@5'	11/16/2023	5	7.87	1.18	3.4	<2.00
BKG05@5'	11/16/2023	5	7.92	1.36	2.54	<2.00
Maximum Background Concentration			8.59	1.82	3.58	NA

1. **Bold** faced values exceed the ECMC Table 915-1 limit(s), but are within background concentrations.

2. **Bold** faced values exceed the ECMC Table 915-1 limit(s) and native background concentrations.

3. Brown highlighted soil analytical values indicate a regulatory exceedance.

NA - Not analyzed/Not applicable

Source material characterization sample, excavated and transported off site for disposal.

Material excavated and transported off site for disposal.

TABLE 5
SUMMARY OF METALS IN SOIL CHEMISTRY DATA
NOBLE 100322
BOCKIUS 15-1,8, PFANNEBECKER C14-32, WELD COUNTY, COLORADO
REM # 28820

Sample ID	Sample Date	Depth (ft)	Arsenic (mg/kg)	Barium (mg/kg)	Cadmium (mg/kg)	Chromium (VI) (mg/kg)	Copper (mg/kg)	Lead (mg/kg)	Nickel (mg/kg)	Selenium (mg/kg)	Silver (mg/kg)	Zinc (mg/kg)
ECMC Table 915-1 Limits (Residential SSL)			0.68	15000	71	0.3	3100	400	1500	390	390	23000
ECMC Table 915-1 Limits (Protection of Groundwater SSL)			0.29	82	0.38	0.00067	46	14	26	0.26	0.8	370
AST01@0.5'	11/16/2023	0.5	0.446	4.62	<0.200	<0.30	<0.400	1.18	0.878	<0.260	<0.0200	1.63
AST02@0.5'	11/16/2023	0.5	0.616	4.79	<0.200	<0.30	0.773	1.39	1.14	<0.260	<0.0200	3.2
AST03@0.5'	11/16/2023	0.5	1.64	43	<0.200	<0.30	2.56	3.06	3.61	<0.260	<0.0200	6.65
DL01@4'	11/16/2023	4	4.67	157	0.359	<0.30	8.27	11.7	7.24	<0.260	0.0613	26
PWV01-N@4'	11/16/2023	4	3	125	0.293	<0.30	6.49	10	6.25	<0.260	0.0487	23.7
PWV01-NE@4'	11/16/2023	4	4.12	161	0.444	<0.30	8.33	15.2	7.49	0.272	0.0823	28.5
PWV01-NW@4'	11/16/2023	4	2.86	135	0.281	<0.30	6.85	9.84	6.35	<0.260	0.0513	23.5
PWV01-S@4'	11/16/2023	4	5.93	167	0.439	<0.30	9.32	13.6	7.62	0.281	0.0764	29.6
PWV01-SE@4'	11/16/2023	4	2.99	72.4	0.274	<0.30	6.93	8.25	6.28	<0.260	0.0292	24.9
PWV01-SW@4'	11/16/2023	4	3.1	90.6	0.311	<0.30	7.99	10.4	6.85	<0.260	0.0575	24.4
SEP01-DL@4'	11/16/2023	4	2.12	95.9	0.242	<0.30	6.83	8.83	4.88	<0.260	0.0414	23.9
SEP02-DL@4'	11/16/2023	4	3	108	0.257	<0.30	5.83	8.48	5.7	<0.260	0.0428	21.7
PWV01-B@5'	11/16/2023	5	3.3	129	0.283	<0.30	6.91	9.61	5.69	<0.260	0.0515	23.1
WC01@1Ft	01/16/2025	1	5.64	160	0.361	<0.30	10.7	12.6	7.57	<0.260	0.0867	27.3
Base@15Ft	01/23/2025	15	1.28	53.1	<0.200	<0.30	5.86	8.25	3.95	<0.260	0.026	21.1
Backfill	01/29/2025	Grab	4.01	223	0.497	<0.30	16.5	11.5	11	0.3	0.066	78.1
NBase 12Ft	01/29/2025	12	1.77	42.8	0.226	<0.30	13.7	8.53	6.87	<0.260	0.0502	30.2
E Base 01 15Ft	02/05/2025	15	0.456	5.9	<0.200	<0.30	0.832	1.92	0.86	<0.260	<0.0200	3.03
E Base 02 15Ft	02/05/2025	15	0.362	5.79	<0.200	<0.30	1.46	1.37	1.04	<0.260	<0.0200	4.62
E Base 03 15Ft	02/05/2025	15	0.518	10.1	<0.200	<0.30	2.62	2.17	1.41	<0.260	<0.0200	7.18
NBase02 15Ft	02/06/2025	15	0.788	137	<0.200	<0.30	2.33	9.95	3.02	<0.260	0.0344	8.65
NWall01 14Ft	02/06/2025	14	0.537	44.7	<0.200	<0.30	1.37	5.05	1.32	<0.260	0.0251	5.74
NWall02 14Ft	02/06/2025	14	0.702	70.7	<0.200	<0.30	1.79	5.77	1.65	<0.260	0.0293	6.77
NWall04 9Ft	02/06/2025	9	0.58	63.1	<0.200	<0.30	1.94	7.58	1.69	<0.260	0.0355	8
NWall05 9Ft	02/06/2025	9	0.645	81.7	<0.200	<0.30	2.14	7.15	1.63	<0.260	0.0316	7.4
SBase02 15Ft	02/06/2025	15	0.667	80.3	<0.200	<0.30	1.91	5.82	2.02	<0.260	0.0206	7.05
SWall01 14Ft	02/06/2025	14	0.504	48.4	<0.200	<0.30	0.979	2.72	1.18	<0.260	<0.0200	3.47
SWall02 14Ft	02/06/2025	14	0.611	82.7	<0.200	<0.30	1.79	6.62	1.88	<0.260	0.0316	7.05
SWall04 9Ft	02/06/2025	9	0.696	54.9	<0.200	<0.30	1.79	5.1	1.37	<0.260	0.0282	6.15
SWall05 9Ft	02/06/2025	9	0.75	93.2	<0.200	<0.30	1.79	6.94	1.72	<0.260	0.0271	6.84
Nwall03 14Ft	02/07/2025	14	1.29	8.07	<0.200	<0.30	1.5	2.95	1.42	<0.260	<0.0200	8.07
Nwall06 9Ft	02/07/2025	9	4.02	70.6	0.297	<0.30	6.78	9.82	5.56	<0.260	0.0584	23.4
Swall03 14Ft	02/07/2025	14	2.08	32.8	<0.200	<0.30	2.38	3.79	2.32	<0.260	<0.0200	11.4
Swall06 9Ft	02/07/2025	9	2.33	40.6	<0.200	<0.30	4.16	4.84	3.47	<0.260	0.0282	14.1
Wbase01 15Ft	02/07/2025	15	0.986	24.8	<0.200	<0.30	2.27	2.29	3.23	<0.260	<0.0200	6.84

TABLE 5
SUMMARY OF METALS IN SOIL CHEMISTRY DATA
NOBLE 100322
BOCKIUS 15-1,8, PFANNEBECKER C14-32, WELD COUNTY, COLORADO
REM # 28820

Sample ID	Sample Date	Depth (ft)	Arsenic (mg/kg)	Barium (mg/kg)	Cadmium (mg/kg)	Chromium (VI) (mg/kg)	Copper (mg/kg)	Lead (mg/kg)	Nickel (mg/kg)	Selenium (mg/kg)	Silver (mg/kg)	Zinc (mg/kg)
ECMC Table 915-1 Limits (Residential SSL)			0.68	15000	71	0.3	3100	400	1500	390	390	23000
ECMC Table 915-1 Limits (Protection of Groundwater SSL)			0.29	82	0.38	0.00067	46	14	26	0.26	0.8	370
Wbase02 15Ft	02/07/2025	15	1.18	72.2	<0.200	<0.30	3.71	6.42	3.13	<0.260	0.0223	13.6
Wwall01 14Ft	02/07/2025	14	1.76	45.3	<0.200	<0.30	3.57	4.55	3.23	<0.260	0.0268	13.6
Wwall02 14Ft	02/07/2025	14	2.01	30.2	<0.200	<0.30	4.93	7.6	3.76	<0.260	0.0415	20.2
Wwall03 14Ft	02/07/2025	14	1.43	48.4	<0.200	<0.30	2.62	3.27	2.65	<0.260	<0.0200	10
Wwall04 9Ft	02/07/2025	9	1.92	46	<0.200	<0.30	2.61	4.99	3.04	<0.260	<0.0200	11.6
Wwall05 9Ft	02/07/2025	9	2.82	99.6	0.249	<0.30	6.08	7.89	5.04	<0.260	0.0398	20.4
Wwall06 9Ft	02/07/2025	9	2.17	72.5	0.203	<0.30	5.15	6.68	4.38	<0.260	0.0399	18.9
EWall 01 14Ft	02/11/2025	14	1.73	128	0.267	<0.30	5	7.3	4.18	<0.260	0.0404	19.9
EWall 02 14Ft	02/11/2025	14	2.8	78.5	<0.200	<0.30	3.8	5.2	4.25	<0.260	0.0278	14.9
EWall 03 9Ft	02/11/2025	9	1.59	57.3	<0.200	<0.30	4.85	5.87	3.78	<0.260	0.0341	15.9
EWall 04 9Ft	02/11/2025	9	3.45	117	<0.200	<0.30	4.71	6.28	4.55	<0.260	0.0282	17.5
MW-1 14FT	07/07/2025	14	0.494	12.2	<0.100	<0.192	<10.0	<10.0	<10.0	0.123	<0.500	<50.0
MW-2 12FT	07/07/2025	12	1	164	0.102	<0.196	<10.0	<10.0	<10.0	<0.100	<0.500	<50.0
MW-3 12FT	07/07/2025	12	2.51	106	<0.100	<0.196	<10.0	<10.0	<10.0	0.137	<0.500	<50.0
MW-4 5FT	07/07/2025	5	1.5	67.2	<0.100	<0.193	<10.0	<10.0	<10.0	0.128	<0.500	<50.0
MW-4 14FT	07/07/2025	14	0.691	44.3	<0.100	<0.199	<10.0	<10.0	<10.0	<0.100	<0.500	<50.0
MW-5 14FT	07/07/2025	14	0.803	19.8	<0.100	<0.199	<10.0	<10.0	<10.0	<0.100	<0.500	<50.0
BKG01@0.5'	11/16/2023	0.5	3.45	141	0.668	<0.30	8.55	22.3	6.76	<0.260	0.0536	35
BKG02@0.5'	11/16/2023	0.5	3.65	149	1.13	<0.30	10.6	41.8	6.74	<0.260	0.0595	39.9
BKG03@0.5'	11/16/2023	0.5	3.7	162	0.937	<0.30	9.91	32.9	6.89	<0.260	0.0643	38
BKG04@0.5'	11/16/2023	0.5	0.897	153	0.516	<0.30	3.66	22.7	2.5	<0.260	0.0427	14.1
BKG05@0.5'	11/16/2023	0.5	0.984	147	0.641	<0.30	3.96	27	2.55	<0.260	0.055	14.7
BKG01@4'	11/16/2023	4	3.46	140	0.811	<0.30	9.59	54.9	6.58	<0.260	0.0636	36.4
BKG02@4'	11/16/2023	4	3.78	162	0.962	<0.30	11.2	58.3	7.13	<0.260	0.0664	42.3
BKG03@4'	11/16/2023	4	0.867	157	0.612	<0.30	3.86	27.4	2.46	<0.260	0.0387	15.2
BKG04@4'	11/16/2023	4	0.915	146	0.95	<0.30	5.17	32.9	2.85	<0.260	0.0452	17.8
BKG05@4'	11/16/2023	4	0.866	152	0.806	<0.30	4.87	45.8	2.49	<0.260	0.0407	18.1
BKG01@5'	11/16/2023	5	3.33	92.9	0.717	<0.30	8.5	25	6.29	<0.260	0.0635	32.1
BKG02@5'	11/16/2023	5	3.65	150	1.01	<0.30	11.2	55.8	6.91	<0.260	0.0535	42.1

TABLE 5
SUMMARY OF METALS IN SOIL CHEMISTRY DATA
NOBLE 100322
BOCKIUS 15-1,8, PFANNEBECKER C14-32, WELD COUNTY, COLORADO
REM # 28820

Sample ID	Sample Date	Depth (ft)	Arsenic (mg/kg)	Barium (mg/kg)	Cadmium (mg/kg)	Chromium (VI) (mg/kg)	Copper (mg/kg)	Lead (mg/kg)	Nickel (mg/kg)	Selenium (mg/kg)	Silver (mg/kg)	Zinc (mg/kg)
ECMC Table 915-1 Limits (Residential SSL)			0.68	15000	71	0.3	3100	400	1500	390	390	23000
ECMC Table 915-1 Limits (Protection of Groundwater SSL)			0.29	82	0.38	0.00067	46	14	26	0.26	0.8	370
BKG03@5'	11/16/2023	5	0.902	137	0.834	<0.30	4.39	36.3	2.44	<0.260	0.0382	16.3
BKG04@5'	11/16/2023	5	0.807	293	0.734	<0.30	3.79	20.1	2.52	<0.260	0.052	13.1
BKG05@5'	11/16/2023	5	0.899	124	0.836	<0.30	4.38	33.4	2.43	<0.260	0.0359	16.6
1.25x Maximum Background Concentration			4.725	366.25	1.4125	NA	14	72.875	8.9125	NA	0.083	52.875

- Bold** faced values exceed the ECMC Table 915-1 limit(s), but are within 1.25x background concentrations.
- Bold** faced values exceed the ECMC Table 915-1 limit(s) and native background concentrations.
- Red & blue highlighted soil analytical values indicate an exceedance of the referenced soil screening level (SSL).
- Non-detect background results accounted for in the highest background concentration by using the reporting limit.

ECMC = Energy & Carbon Management Commission

(<) = Analytical result is less than the indicated laboratory reporting limit.

mg/kg = Milligrams per kilogram

ft. = Feet

bgs = Below ground surface

* Indicates laboratory minimum detection limit in excess of SSL

NA - Not analyzed/Not applicable

Source material characterization sample, excavated and transported off site for disposal.

Material excavated and transported off site for disposal.

TABLE 6
SUMMARY OF GROUNDWATER ELEVATION DATA AND ORGANIC CHEMISTRY DATA
NOBLE 100322
BOCKIUS 15-1,8, PFANNEBECKER C14-32, WELD COUNTY, COLORADO
REM # 28820

Sample ID	Sample Date	Benzene (µg/L)	Toluene (µg/L)	Ethyl-Benzene (µg/L)	Xylenes (µg/L)	Naphthalene (µg/L)	1,2,4-Trimethyl-Benzene (µg/L)	1,3,5-Trimethyl-Benzene (µg/L)	TOC Elevation (ft)	Depth to Groundwater Below TOC (ft)	Depth to Groundwater Below Ground Surface (ft)	Groundwater Elevation (ft)	LNAPL Thickness (ft)
ECMC Table 915-1 Limits		5.0	560	700	1400	140	67	67					
GWS	01/29/2025	640	<1.0	96	61	15	62	12	NA	NA	~15	NA	NA
MW-1	07/10/2025	88	<1.00	4.4	<3.00	<5.00	<1.00	<1.00	100.00	10.03	NM	89.97	NP
	10/6/2025	1.06	1.03	<1.00	<1.00	<2.00	<2.00	<2.00		9.41	NM	90.59	NP
MW-2	07/10/2025	<1.00	<1.00	<1.00	<3.00	<5.00	<1.00	<1.00	99.73	11.99	NM	87.74	NP
	10/6/2025	<1.00	<1.00	<1.00	<1.00	<2.00	<2.00	<2.00		9.20	NM	90.53	NP
MW-3	07/10/2025	8.68	<1.00	1.45	<3.00	<5.00	<1.00	<1.00	100.57	13.85	NM	86.72	NP
	10/6/2025	1.21	<1.00	<1.00	<1.00	<2.00	<2.00	<2.00		10.01	NM	90.56	NP
MW-4	07/10/2025	<1.00	<1.00	88	<3.00	17.3	89.6	<1.00	99.94	11.49	NM	88.45	NP
	10/6/2025	<1.00	<1.00	<1.00	<1.00	<2.00	<2.00	<2.00		9.18	NM	90.76	NP
MW-5	07/10/2025	<1.00	<1.00	<1.00	<3.00	<5.00	<1.00	<1.00	99.42	13.08	NM	86.34	NP
	10/6/2025	<1.00	<1.00	<1.00	<1.00	<2.00	<2.00	<2.00		8.67	NM	90.75	NP

Notes:

- Groundwater standards referenced from 2 CCR 404-1, Table 915-1, January 15, 2021.
 - Depth to water measurements were measured from ground surface for excavation samples. Monitoring well measurements were collected from top of casing and adjusted using survey data to reflect depth of water from ground surface.
- TMB = Trimethylbenzene
ECMC = Colorado Energy and Carbon Management Commission
LNAPL = Light Non-Aqueous Phase Liquid
µg/L = Micrograms per liter
(<) = Analytical result is less than the indicated laboratory reporting limit.
ft. = Feet
bgs = below ground surface
AMSL = Above Mean Sea Level
NM = Not measured
ND = Not detected
NA = Constituent not analyzed
Red highlighted groundwater analytical values indicate an exceedance of ECMC Groundwater Standard
Bold faced values exceed the ECMC Table 915-1 limit(s)

TABLE 7
SUMMARY OF INORGANIC GROUNDWATER CHEMISTRY DATA
NOBLE 100322
BOCKIUS 15-1,8, PFANNEBECKER C14-32, WELD COUNTY, COLORADO
REM # 28820

Sample ID	Sample Date	Total Dissolved Solids (mg/L)	Chloride Ion (mg/L)	Sulfate Ion (mg/L)
ECMC Table 915-1 Limits*		<1.25 x local background	250 or <1.25 x local background	250 or <1.25 x local background
GWS	01/29/2025	3540	432	1250
MW-1	07/10/2025	2620	367	1090
	10/6/2025	2120	402	681
MW-2	07/10/2025	1930	343	650
	10/6/2025	1840	337	567
MW-3	07/10/2025	2010	296	719
	10/6/2025	2110	389	684
MW-4	07/10/2025	1990	352	617
	10/6/2025	2000	386	598

TABLE 7
SUMMARY OF INORGANIC GROUNDWATER CHEMISTRY DATA
NOBLE 100322
BOCKIUS 15-1,8, PFANNEBECKER C14-32, WELD COUNTY, COLORADO
REM # 28820

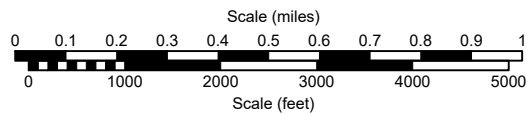
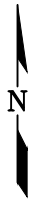
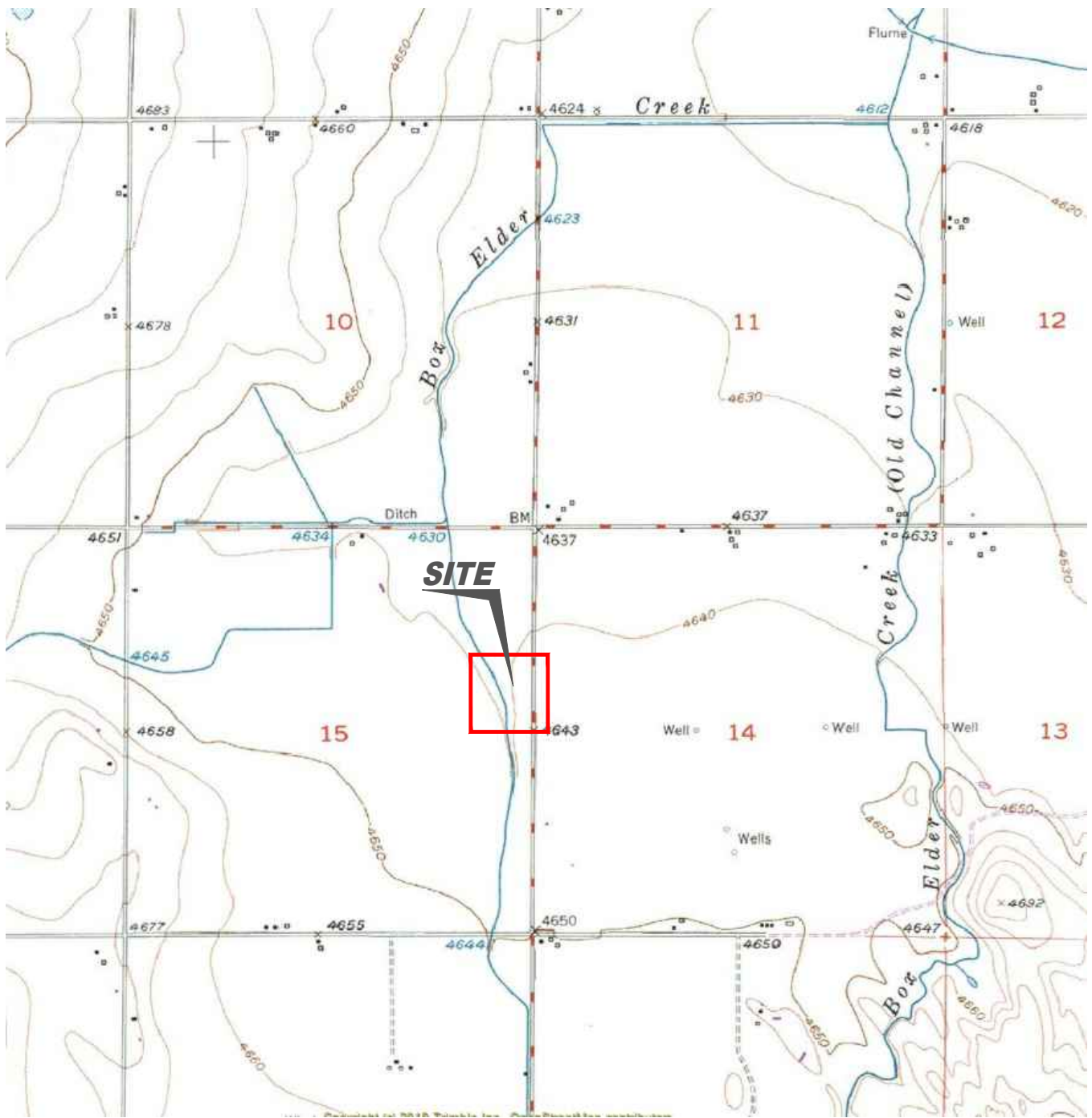
MW-5	07/10/2025	1880	269	781
	10/6/2025	1750	321	486
Maximum BKG Concentration x1.25		-	-	-

Notes:

1. Groundwater standards referenced from 2 CCR 404-1, Table 915-1, January 15, 2021.
 2. Depth to water measurements were measured from ground surface for excavation samples. Monitoring well measurements were collected from top of casing and adjusted using survey data to reflect depth of water from ground surface.
- ECMC = Colorado Energy and Carbon Management Commission
mg/L = Milligrams per liter
(<) = Analytical result is less than the indicated laboratory reporting limit.
ft. = feet
bgs = below ground surface
AMSL = Above Mean Sea Level
NM = Not measured
NA = Constituent not analyzed
BKG = Background
 = Up-gradient and/or cross-gradient well location used for background concentration.
Maximum historic background concentration used to compare to site inorganic parameters
Bold faced values exceed the ECMC Table 915-1 limit(s), but are within 1.25x background concentrations.
Red faced values exceed the ECMC Table 915-1 limit(s) and greater than 1.25x background concentrations.
Analyzed out of hold time


FIGURES

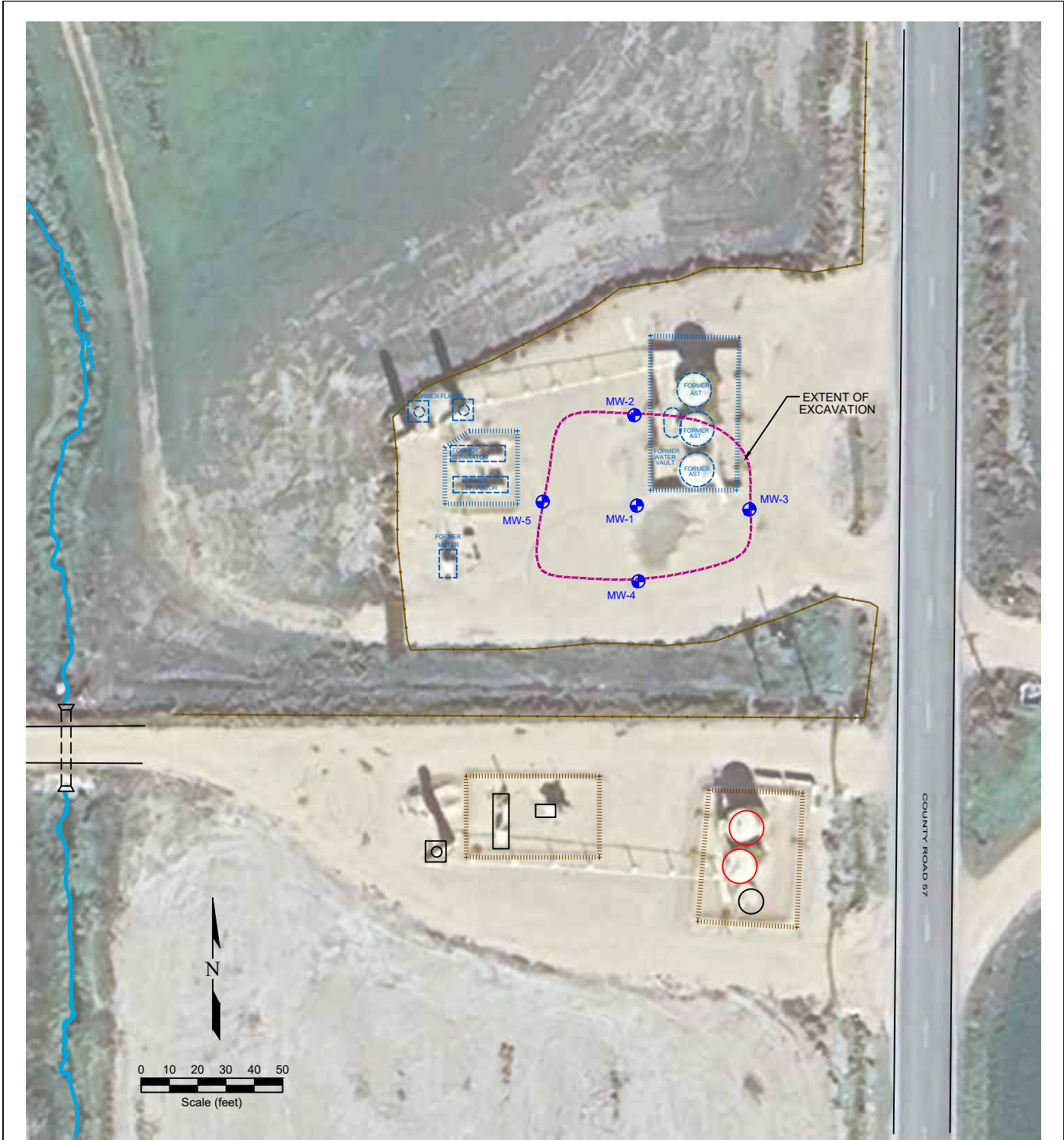
Q3 2025 GROUNDWATER FIGURES



USGS 7.5 MINUTE SERIES (TOPOGRAPHIC)

Figure 1
SITE LOCATION MAP
Noble Energy, Inc.
Bockius 15-1, 8, Pfannebecker C14-32, D, C,15-22
 SENE Section 15, T4N, R64W, 6th PM
 Weld County, Colorado
 40.312693°, -104.527923°

Project No. C023-304	API #	Facility # 447608	
Date 8/27/25	Remediation # 28820	Filename 23304T	



LEGEND

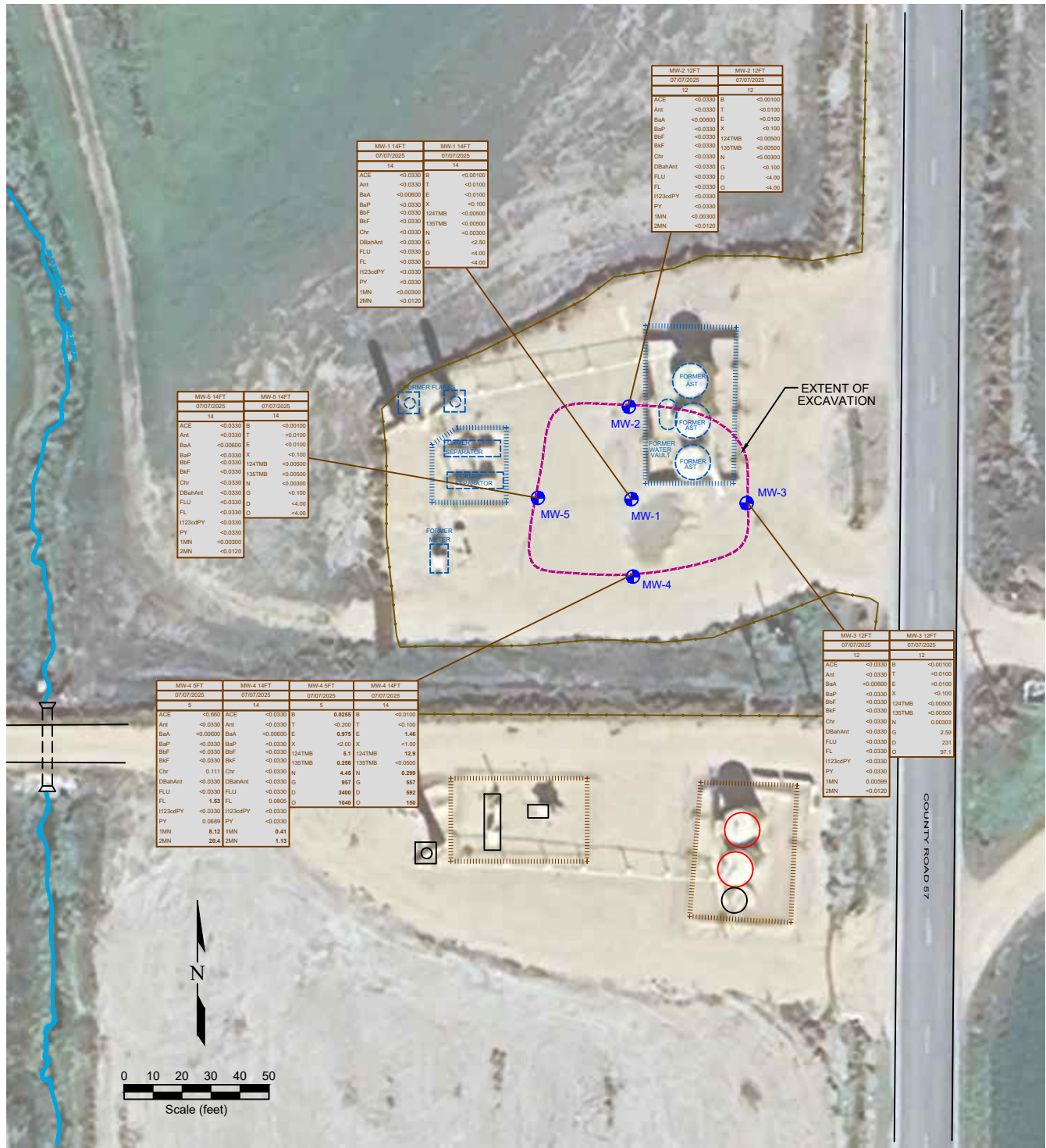
- WELL HEAD LOCATION
- ABOVE GROUND STORAGE TANK
- ⊕ MONITORING WELL LOCATION
- ▭ FORMER FACILITY
- EXTENT OF EXCAVATION
- FENCE LINE
- ▤ CONTAINMENT BERM
- CONTAINMENT WALL

Figure 2

SITE MAP

Noble Energy, Inc.
Bockius 15-1, 8, Pfannebecker C14-32, D, C, 15-22
 SENE Section 15, T4N, R64W, 6th PM
 Weld County, Colorado
 40.312693°, -104.527923°

Project No. C023-304	API #	Facility # 447608	
Date 8/27/25	Remediation # 28820	Filename 23304Q2	



MW-1 14FT		MW-5 14FT	
07/07/2025		07/07/2025	
14		14	
ACE	<0.0330	B	<0.00100
Ant	<0.0330	T	<0.0100
BaA	<0.00000	E	<0.0100
BaP	<0.0330	X	<0.100
BbF	<0.0330	124TMB	<0.00500
BbF	<0.0330	130TMB	<0.00500
Chr	<0.0330	N	<0.00500
DBahAnt	<0.0330	G	<0.300
FLU	<0.0330	D	<4.00
FL	<0.0330	O	<4.00
1123cdPY	<0.0330		
PY	<0.0330		
1MN	<0.00300		
2MN	<0.0120		

MW-5 14FT		MW-5 14FT	
07/07/2025		07/07/2025	
14		14	
ACE	<0.0330	B	<0.00100
Ant	<0.0330	T	<0.0100
BaA	<0.00000	E	<0.0100
BaP	<0.0330	X	<0.100
BbF	<0.0330	124TMB	<0.00500
BbF	<0.0330	130TMB	<0.00500
Chr	<0.0330	N	<0.00500
DBahAnt	<0.0330	G	<0.00300
FLU	<0.0330	D	<4.00
FL	<0.0330	O	<4.00
1123cdPY	<0.0330		
PY	<0.0330		
1MN	<0.00300		
2MN	<0.0120		

MW-4 5FT		MW-4 14FT		MW-4 5FT		MW-4 14FT	
07/07/2025		07/07/2025		07/07/2025		07/07/2025	
5		14		5		14	
ACE	<0.000	ACE	<0.0330	B	0.0255	B	<0.0100
Ant	<0.0330	Ant	<0.0330	T	<0.200	T	<0.100
BaA	<0.00000	BaA	<0.00000	E	0.975	E	1.46
BaP	<0.0330	BaP	<0.0330	X	<2.00	X	<1.00
BbF	<0.0330	BbF	<0.0330	124TMB	6.1	124TMB	12.9
BbF	<0.0330	BbF	<0.0330	130TMB	0.256	130TMB	<0.0500
Chr	0.111	Chr	<0.0330	N	4.45	N	0.299
DBahAnt	<0.0330	DBahAnt	<0.0330	D	967	D	957
FLU	<0.0330	FLU	<0.0330	D	3400	D	892
FL	1.83	FL	0.0805	O	1940	O	159
1123cdPY	<0.0330	1123cdPY	<0.0330				
PY	0.0689	PY	<0.0330				
1MN	8.12	1MN	0.41				
2MN	28.4	2MN	1.13				

MW-2 12FT		MW-2 12FT	
07/07/2025		07/07/2025	
12		12	
ACE	<0.0330	B	<0.00100
Ant	<0.0330	T	<0.0100
BaA	<0.00000	E	<0.0100
BaP	<0.0330	X	<0.100
BbF	<0.0330	124TMB	<0.00500
BbF	<0.0330	130TMB	<0.00500
Chr	<0.0330	N	<0.00500
DBahAnt	<0.0330	G	<0.100
FLU	<0.0330	D	<4.00
FL	<0.0330	O	<4.00
1123cdPY	<0.0330		
PY	<0.0330		
1MN	<0.00300		
2MN	<0.0120		

MW-3 12FT		MW-3 12FT	
07/07/2025		07/07/2025	
12		12	
ACE	<0.0330	B	<0.00100
Ant	<0.0330	T	<0.0100
BaA	<0.00000	E	<0.0100
BaP	<0.0330	X	<0.100
BbF	<0.0330	124TMB	<0.00500
BbF	<0.0330	130TMB	<0.00500
Chr	<0.0330	N	0.00303
DBahAnt	<0.0330	G	2.59
FLU	<0.0330	D	231
FL	<0.0330	O	97.1
1123cdPY	<0.0330		
PY	<0.0330		
1MN	0.00599		
2MN	<0.0120		



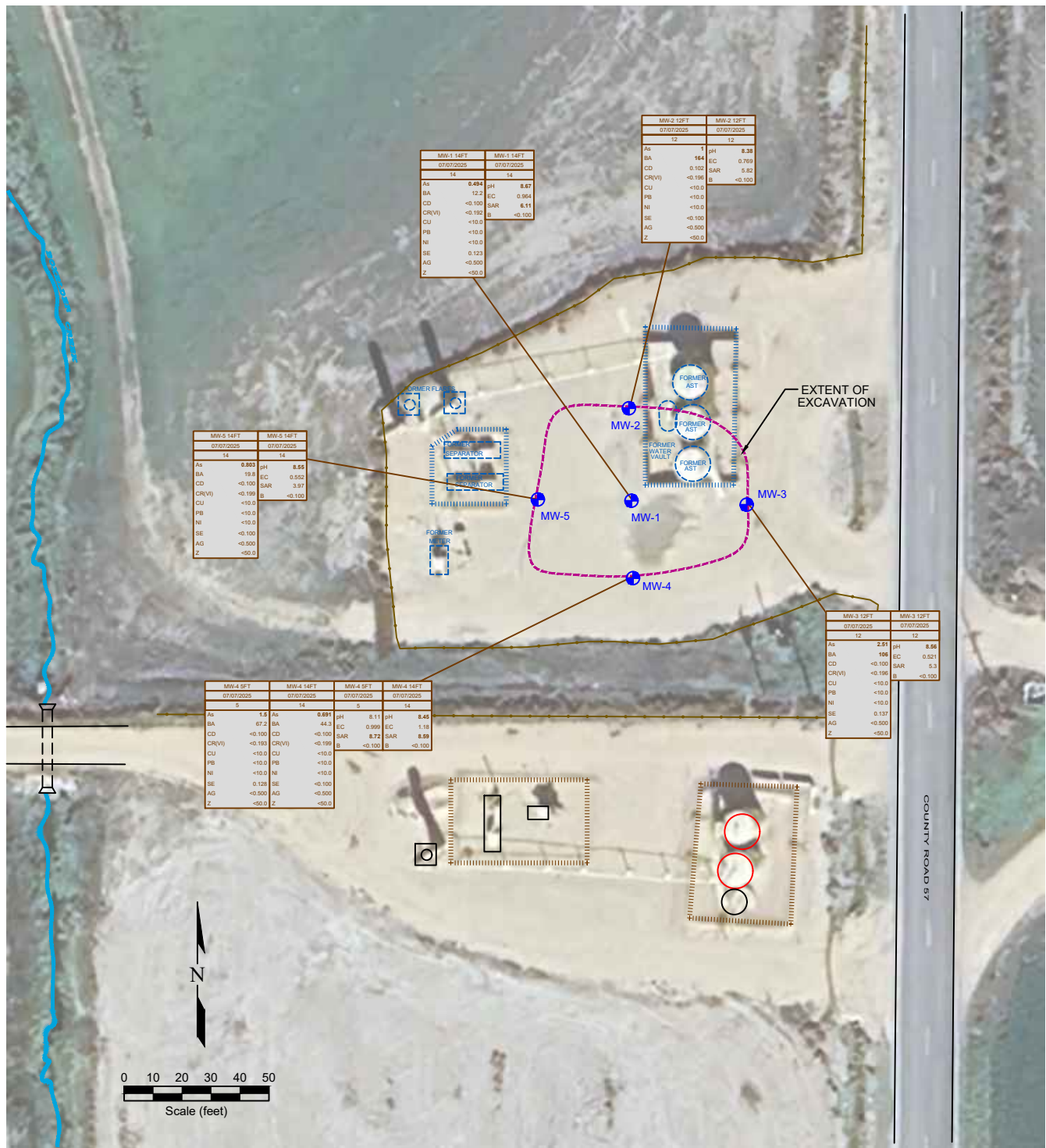
LEGEND

- WELL HEAD LOCATION
- ABOVE GROUND STORAGE TANK
- ⊕ MONITORING WELL LOCATION
- FORMER FACILITY
- EXTENT OF EXCAVATION
- FENCE LINE
- CONTAINMENT BERM
- CONTAINMENT WALL

SAMPLE ID	SAMPLE ID	DATE SAMPLED	DATE SAMPLED
DEPTH (ft)	DEPTH (ft)	DEPTH (ft)	DEPTH (ft)
ACE	<0.00000	ANTHRACENE (mg/kg)	
Ant	<0.00000	ANTHRACENE (mg/kg)	
BaA	<0.00000	BENZO (A) ANTHRACENE (mg/kg)	
BaP	<0.00000	BENZO (A) PYRENE (mg/kg)	
BbF	<0.00000	BENZO (B) FLUORANTHENE (mg/kg)	
BbF	<0.00000	BENZO (K) FLUORANTHENE (mg/kg)	
Chr	<0.00000	CHRYSENE (mg/kg)	
DBahAnt	<0.00000	DIBENZ (A,H) ANTHRACENE (mg/kg)	
FLU	<0.00000	FLUORANTHENE (mg/kg)	
FL	<0.00000	FLUORONE (mg/kg)	
1123cdPY	<0.00000	INDENO (1,2,3-CD) PYRENE (mg/kg)	
PY	<0.00000	PYRENE (mg/kg)	
1MN	<0.00000	1-METHYLNAPHTHALENE (mg/kg)	
2MN	<0.00000	2-METHYLNAPHTHALENE (mg/kg)	
B	<0.0020	BENZENE (mg/kg)	
T	<0.0050	TOLUENE (mg/kg)	
E	<0.0050	ETHYLBENZENE (mg/kg)	
X	<0.010	TOTAL XYLENES (mg/kg)	
124TMB	<0.0050	1,2,4-TRIMETHYLBENZENE (mg/kg)	
130TMB	<0.0050	1,3,5-TRIMETHYLBENZENE (mg/kg)	
N	<0.0050	NAPHTHALENE (mg/kg)	
G	<0.50	TPH-GRO (mg/kg)	
D	>0	TPH-ORO (mg/kg)	
D	<0	TPH-ORO (mg/kg)	

Figure 3
ORGANIC SOIL CHEMISTRY MAP
 Noble Energy, Inc.
 Bockius 15-1, 8, Pfannebecker C14-32, D, C, 15-22
 SENE Section 15, T4N, R64W, 6th PM
 Weld County, Colorado
 40.312693°, -104.527923°

Project No. C023-304	API #	Facility # 447608	
Date 8/27/25	Remediation # 28820	Filename 23304Q2	



MW-1 14FT		MW-1 14FT	
07/07/2025		07/07/2025	
As	0.484	pH	8.67
BA	12.2	EC	0.894
CD	<-0.100	SAR	6.11
CR(V)	<-0.100	B	<-0.100
CU	<-0.100		
PB	<-0.100		
NI	<-0.100		
SE	0.123		
AG	<-0.500		
Z	<-50.0		

MW-2 12FT		MW-2 12FT	
07/07/2025		07/07/2025	
As	12	pH	8.38
BA	164	EC	0.769
CD	0.100	SAR	5.52
CR(V)	<-0.198	B	<-0.100
CU	<-0.100		
PB	<-0.100		
NI	<-0.100		
SE	<-0.100		
AG	<-0.500		
Z	<-50.0		

MW-5 14FT		MW-5 14FT	
07/07/2025		07/07/2025	
As	0.893	pH	8.55
BA	19.8	EC	0.552
CD	<-0.100	SAR	3.97
CR(V)	<-0.198	B	<-0.100
CU	<-0.100		
PB	<-0.100		
NI	<-0.100		
SE	<-0.100		
AG	<-0.500		
Z	<-50.0		

MW-3 12FT		MW-3 12FT		
07/07/2025		07/07/2025		
As	12	2.51	pH	8.56
BA	106	EC	0.521	
CD	<-0.100	SAR	5.3	
CR(V)	<-0.198	B	<-0.100	
CU	<-0.100			
PB	<-0.100			
NI	<-0.100			
SE	0.137			
AG	<-0.500			
Z	<-50.0			

MW-4 5FT		MW-4 14FT		MW-4 5FT		MW-4 14FT		
07/07/2025		07/07/2025		07/07/2025		07/07/2025		
As	5	1.5	As	0.691	pH	8.11	pH	8.45
BA	67.2	BA	44.3	EC	0.999	EC	1.18	
CD	<-0.100	CD	<-0.100	SAR	8.72	SAR	8.89	
CR(V)	<-0.198	CR(V)	<-0.198	B	<-0.100	B	<-0.100	
CU	<-0.100	CU	<-0.100					
PB	<-0.100	PB	<-0.100					
NI	<-0.100	NI	<-0.100					
SE	0.138	SE	<-0.100					
AG	<-0.500	AG	<-0.500					
Z	<-50.0	Z	<-50.0					

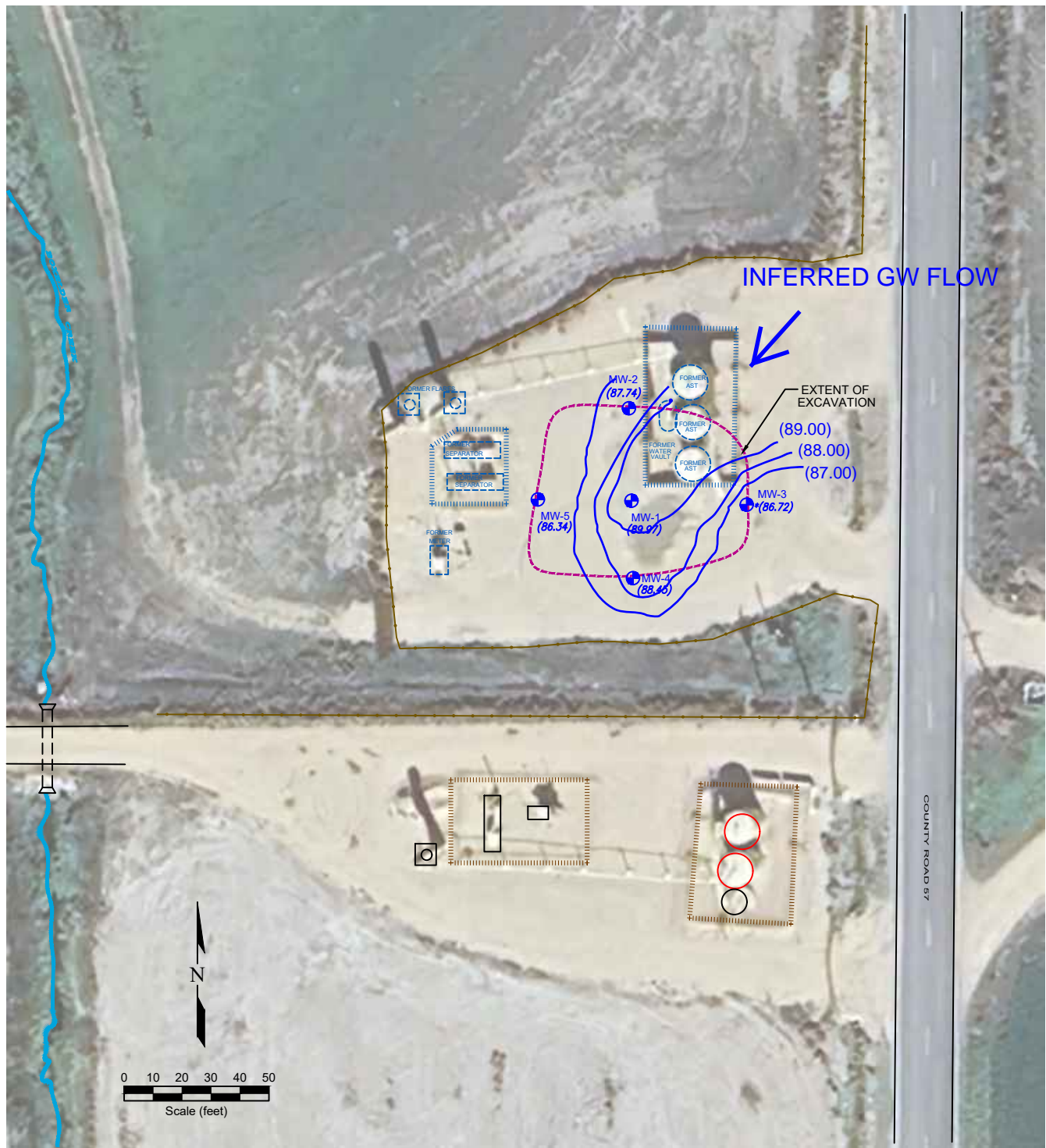


- LEGEND**
- WELL HEAD LOCATION
 - ABOVE GROUND STORAGE TANK
 - ⊕ MONITORING WELL LOCATION
 - FORMER FACILITY
 - EXTENT OF EXCAVATION
 - FENCE LINE
 - CONTAINMENT BERM
 - CONTAINMENT WALL

SAMPLE	SAMPLE ID	DATE SAMPLED	DEPTH (ft)	ANALYSIS
As	-02T	ARSENIC (mg/kg)		
BA	-02B	BARIUM (mg/kg)		
CD	-02C	CADMIUM (mg/kg)		
CR(V)	-02D	CHROMIUM (mg/kg)		
CU	-02E	COPPER (mg/kg)		
PB	-02F	LEAD (mg/kg)		
NI	-02G	NICKEL (mg/kg)		
SE	-02H	SELENIUM (mg/kg)		
AG	-02I	SILVER (mg/kg)		
Z	-02J	ZINC (mg/kg)		

Figure 4
METALS AND INORGANIC SOIL CHEMISTRY MAP
 Noble Energy, Inc.
 Bockius 15-1, 8, Pfannebecker C14-32, D, C, 15-22
 SENE Section 15, T4N, R64W, 6th PM
 Weld County, Colorado
 40.312693°, -104.527923°

Project No. C023-304	API #	Facility # 447608	
Date 8/27/25	Remediation # 28820	Filename 23304Q2	

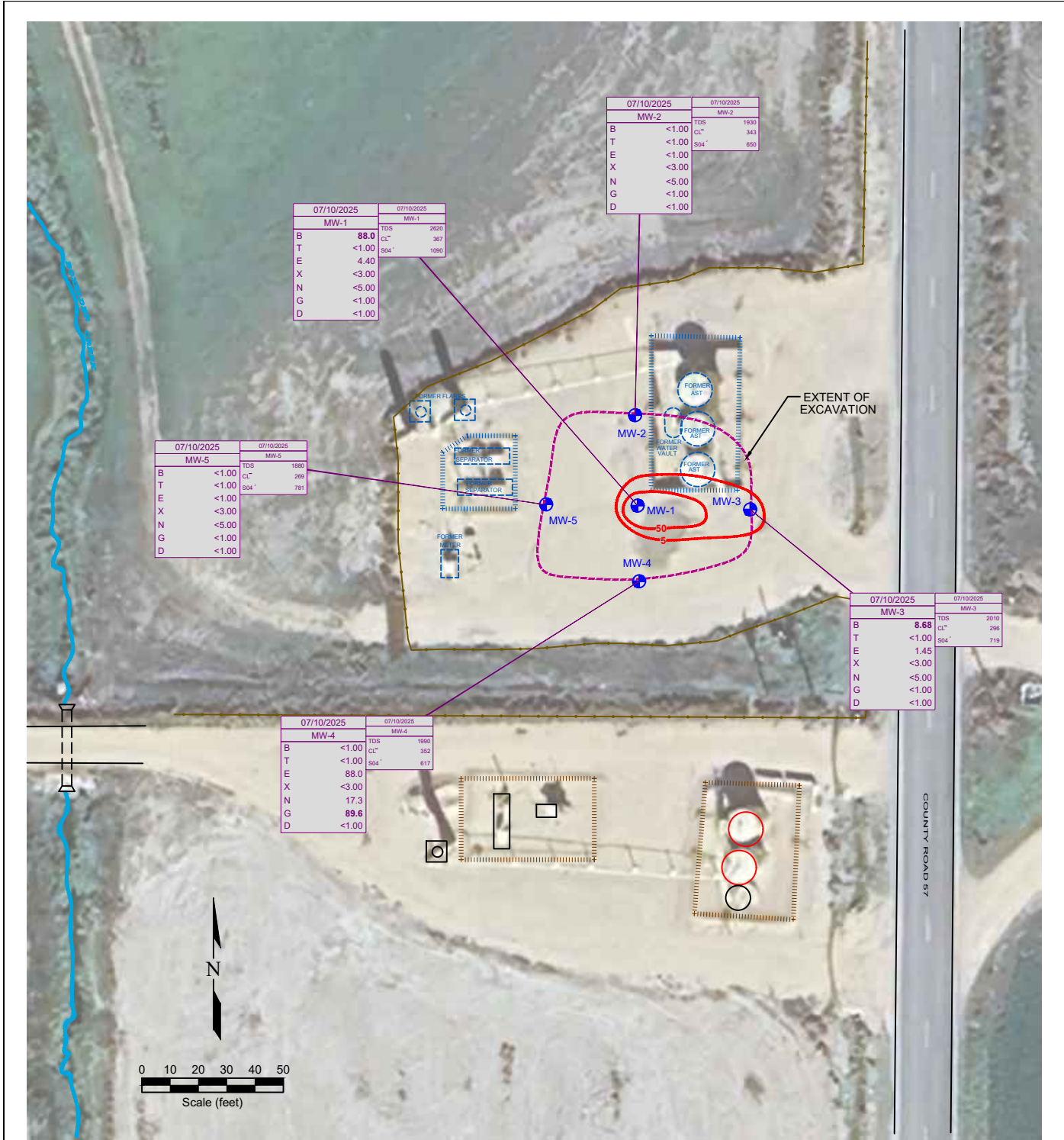


LEGEND

- WELL HEAD LOCATION
- ABOVE GROUND STORAGE TANK
- FORMER FACILITY
- EXTENT OF EXCAVATION
- MONITORING WELL LOCATION
- FENCE LINE
- CONTAINMENT BERM
- CONTAINMENT WALL
- (87.74) GROUND WATER ELEVATION (ft above arbitrary datum)
- NOT USED FOR CONTOURING
- NOT MEASURED
- WATER TABLE CONTOUR
- GROUND WATER FLOW DIRECTION

Figure 5
INFERRED GROUNDWATER CONTOUR MAP
 July 10, 2025
 Noble Energy, Inc.
 Bockius 15-1, 8, Pfannebecker C14-32, D, C, 15-22
 SENE Section 15, T4N, R64W, 6th PM
 Weld County, Colorado
 40.312693°, -104.527923°

Project No. C023-304	API #	Facility # 447608	
Date 8/27/25	Remediation # 28820	Filename 23304Q2	



LEGEND

- WELL HEAD LOCATION
- ABOVE GROUND STORAGE TANK
- ⊕ MONITORING WELL LOCATION
- ⊔ FORMER FACILITY
- EXTENT OF EXCAVATION
- FENCE LINE
- ⋯ CONTAINMENT BERM
- CONTAINMENT WALL

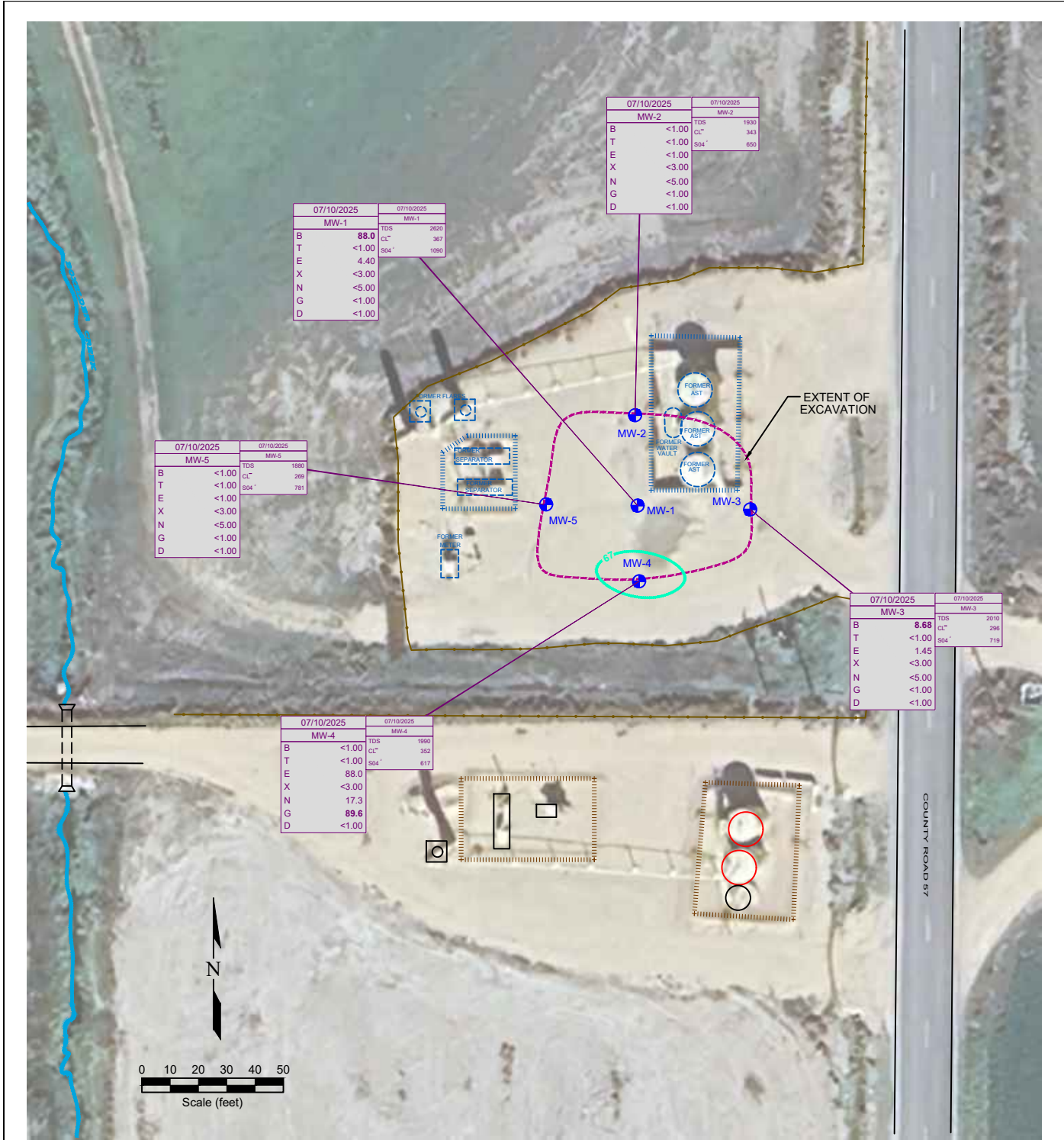
07/10/2025	DATE SAMPLED
MW-1	SAMPLE ID
88	BENZENE (ug/L)
<1.00	TOLUENE (ug/L)
4.4	ETHYLBENZENE (ug/L)
<3.00	TOTAL XYLENES (ug/L)
<5.00	NAPHTHALENE (ug/L)
<1.00	1,2,4-TRIMETHYLBENZENE (ug/L)
<1.00	1,3,5-TRIMETHYLBENZENE (ug/L)

BENZENE ISO-CONCENTRATION (ug/L)
(dashed where inferred)

07/10/2025	DATE SAMPLED
MW-1	SAMPLE ID
2620	TOTAL DISSOLVED SOLIDS (mg/L)
367	CHLORIDE ION (mg/L)
1090	SULFATE ION (mg/L)

Figure 6
GROUNDWATER CHEMISTRY WITH
BENZENE ISO-CONCENTRATION MAP
Noble Energy, Inc.
Bockius 15-1, 8, Pfannebecker C14-32, D, C, 15-22
SENE Section 15, T4N, R64W, 6th PM
Weld County, Colorado
40.312693°, -104.527923°

Project No. C023-304	API #	Facility # 447608	
Date 8/27/25	Remediation # 28820	Filename 23304Q2	



LEGEND

- WELL HEAD LOCATION
- ABOVE GROUND STORAGE TANK
- ⊕ MONITORING WELL LOCATION
- FORMER FACILITY
- EXTENT OF EXCAVATION
- FENCE LINE
- CONTAINMENT BERM
- CONTAINMENT WALL

07/10/2025		07/19/2025	
MW-1		MW-1	
B	88.0	TDS	2620
T	<1.00	CL ⁻	367
E	4.4	SO4 ⁻	1090
X	<3.00		
N	<5.00		
G	<1.00		
D	<1.00		

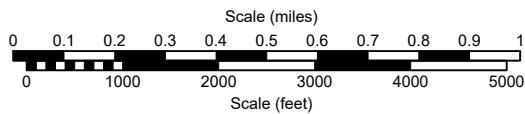
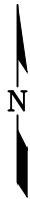
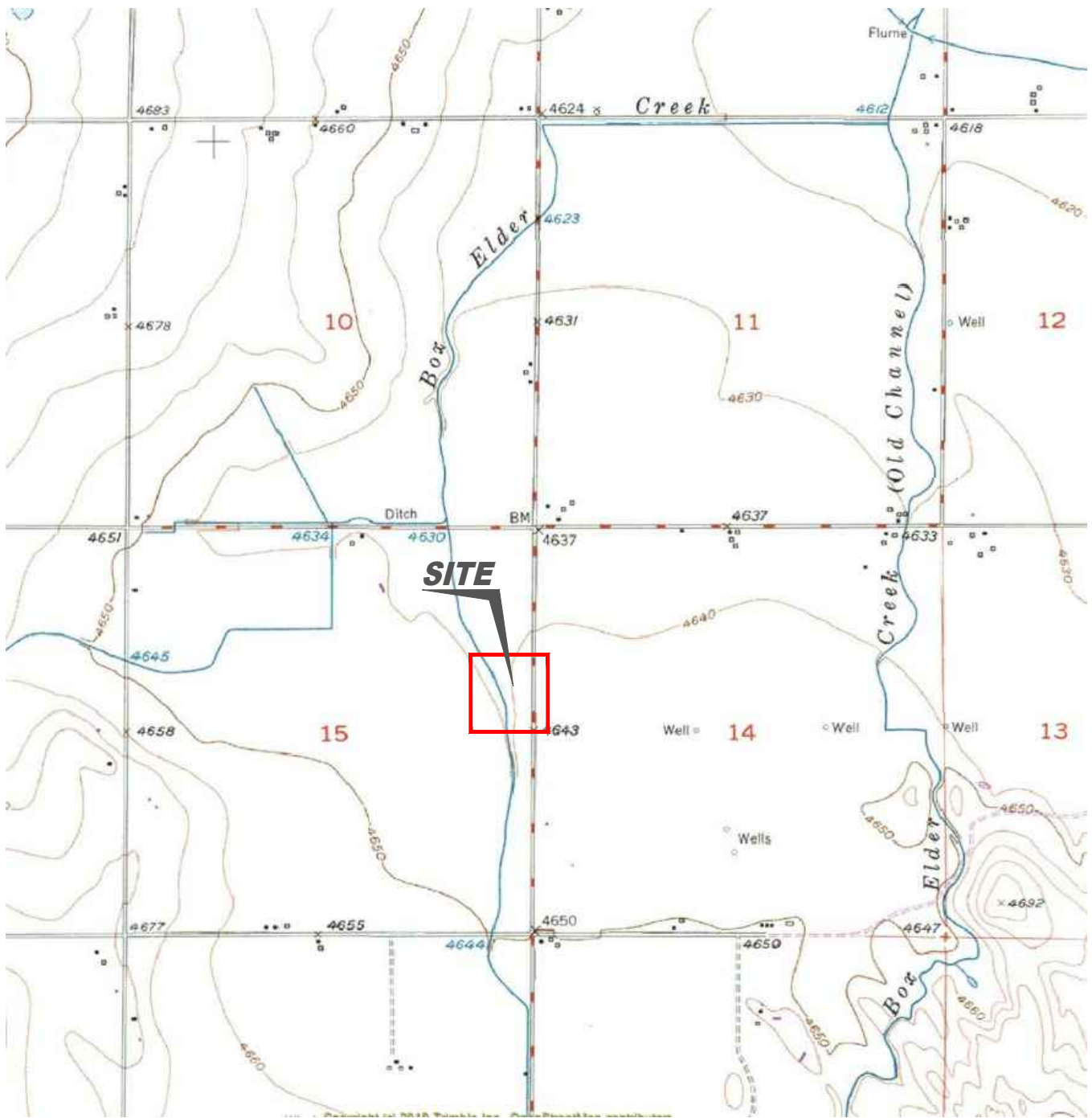
07/10/2025		07/19/2025	
MW-5		MW-5	
B	<1.00	TDS	1990
T	<1.00	CL ⁻	299
E	<1.00	SO4 ⁻	791
X	<3.00		
N	<5.00		
G	<1.00		
D	<1.00		

67 1, 2, 4-TRIMETHYLBENZENE ISOCONCENTRATION (µg/L)
(dashed where inferred)

Figure 7
GROUNDWATER CHEMISTRY WITH 1, 2, 4
TRIMETHYL BENZENE ISO-CONCENTRATION MAP
Noble Energy, Inc.
Bockius 15-1, 8, Pfannebecker C14-32, D, C,15-22
SENE Section 15, T4N, R64W, 6th PM
Weld County, Colorado
40.312693°, -104.527923°

Project No. C023-304	API #	Facility # 447608	
Date 8/27/25	Remediation # 28820	Filename 23304Q2	

Q4 2025 GROUNDWATER FIGURES

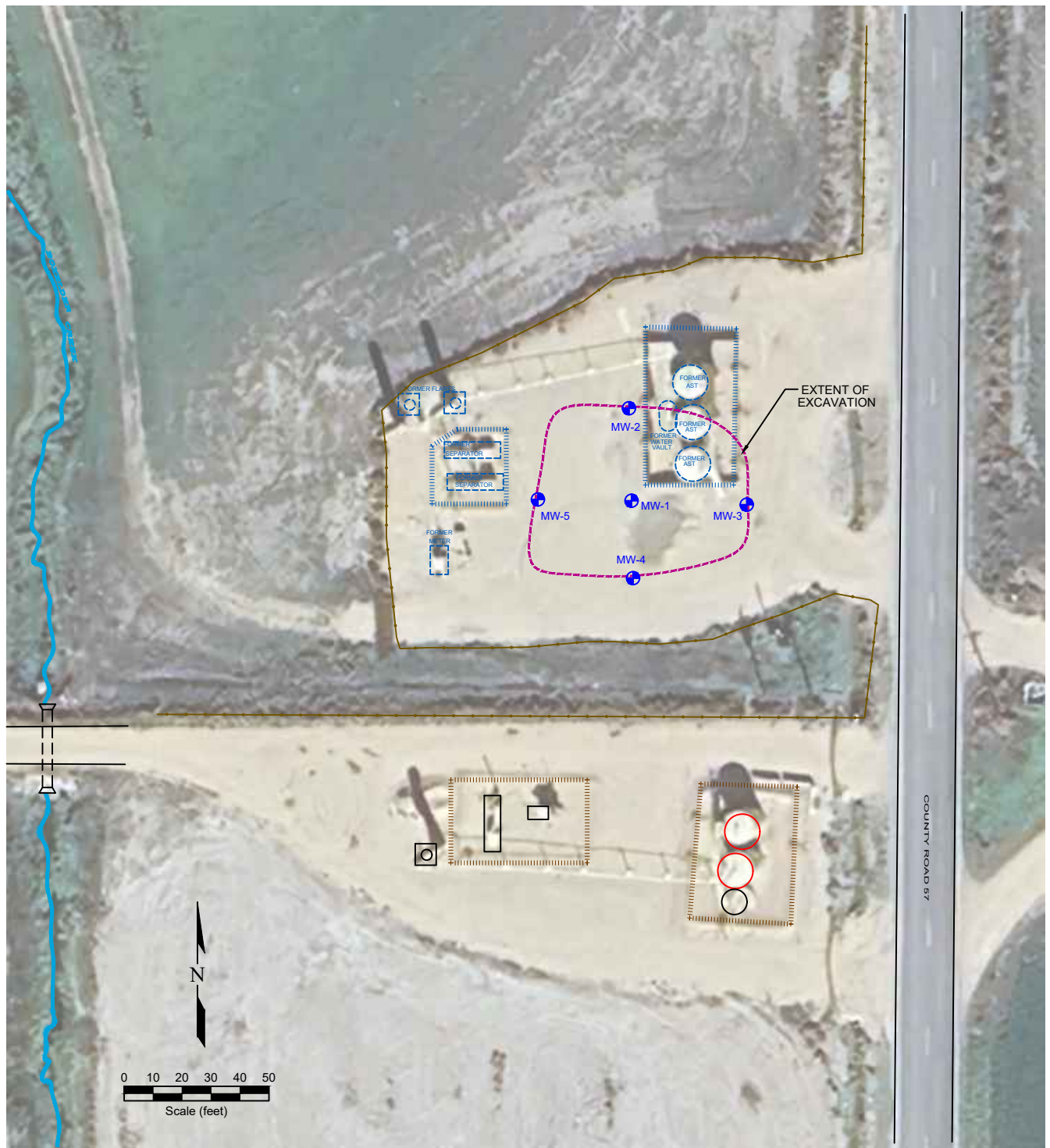


USGS 7.5 MINUTE SERIES (TOPOGRAPHIC)

Figure 1
SITE LOCATION MAP
 Noble Energy, Inc.
 Bockius 15-1, 8, Pfannebecker C14-32, D, C, 15-22
 Q4 2025 Groundwater Monitoring
 SENE Section 15, T4N, R64W, 6th PM
 Weld County, Colorado
 40.312693°, -104.527923°

Project No. C023-304	API #	Facility # 447608
Date 12/9/25	Remediation # 28820	Filename 23304T



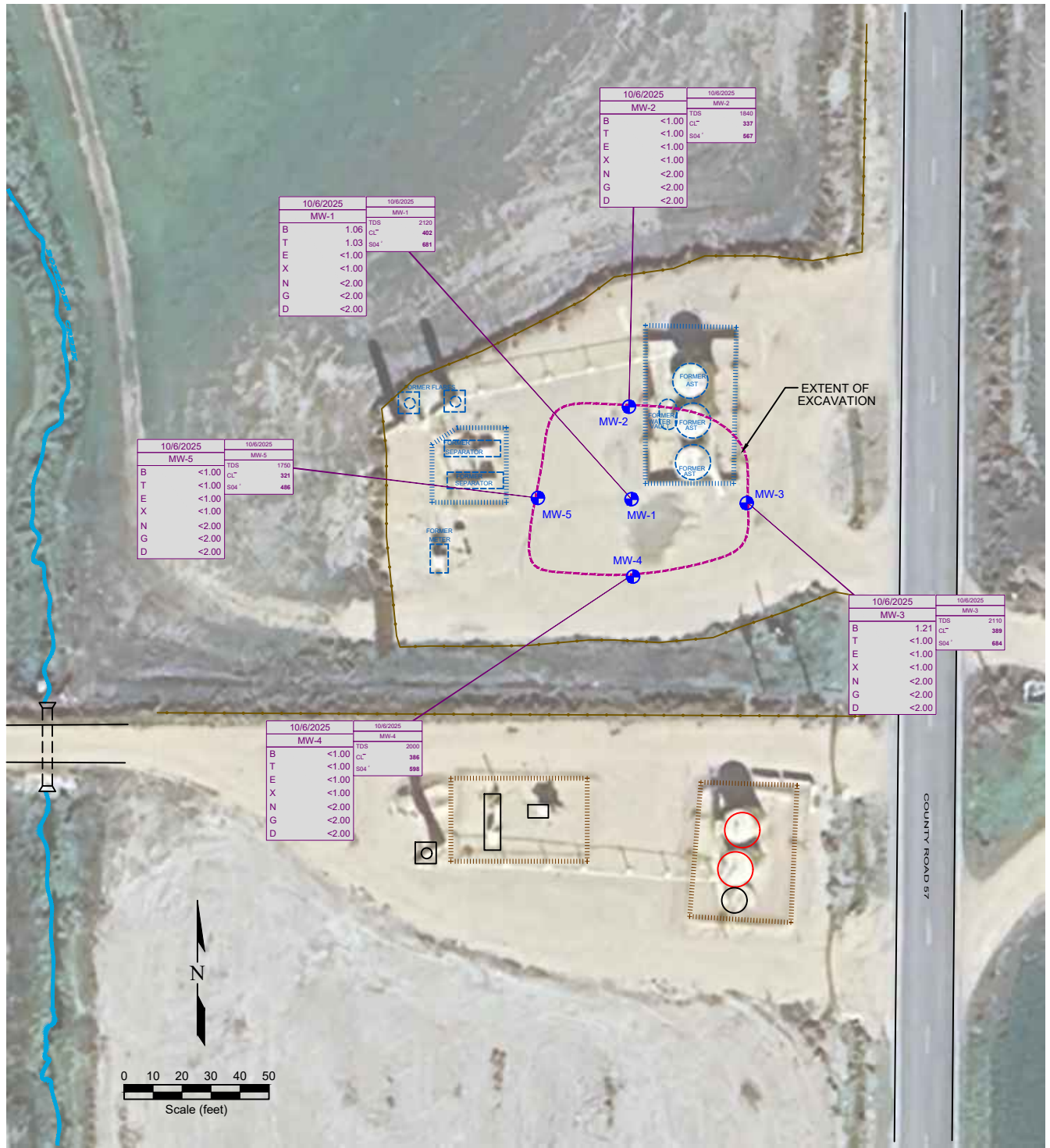


LEGEND

- WELL HEAD LOCATION
- ABOVE GROUND STORAGE TANK
- ⊕ MONITORING WELL LOCATION
- FORMER FACILITY
- EXTENT OF EXCAVATION
- FENCE LINE
- CONTAINMENT BERM
- CONTAINMENT WALL

Figure 2
SITE MAP
 Noble Energy, Inc.
 Bockius 15-1, 8, Pfannebecker C14-32, D, C,15-22
 Q4 2025 Groundwater Monitoring
 SENE Section 15, T4N, R64W, 6th PM
 Weld County, Colorado
 40.312693°, -104.527923°

Project No. C023-304	API #	Facility # 447608	
Date 12/9/25	Remediation # 28820	Filename 23304Q2	



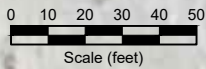
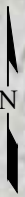
10/6/2025		10/6/2025	
MW-2		MW-2	
B	<1.00	TDS	1840
T	<1.00	CL ⁻	337
E	<1.00	SO4 ⁻	967
X	<1.00		
N	<2.00		
G	<2.00		
D	<2.00		

10/6/2025		10/6/2025	
MW-1		MW-1	
B	1.06	TDS	2120
T	1.03	CL ⁻	482
E	<1.00	SO4 ⁻	881
X	<1.00		
N	<2.00		
G	<2.00		
D	<2.00		

10/6/2025		10/6/2025	
MW-5		MW-5	
B	<1.00	TDS	1750
T	<1.00	CL ⁻	321
E	<1.00	SO4 ⁻	486
X	<1.00		
N	<2.00		
G	<2.00		
D	<2.00		

10/6/2025		10/6/2025	
MW-3		MW-3	
B	1.21	TDS	2110
T	<1.00	CL ⁻	389
E	<1.00	SO4 ⁻	684
X	<1.00		
N	<2.00		
G	<2.00		
D	<2.00		

10/6/2025		10/6/2025	
MW-4		MW-4	
B	<1.00	TDS	2000
T	<1.00	CL ⁻	386
E	<1.00	SO4 ⁻	898
X	<1.00		
N	<2.00		
G	<2.00		
D	<2.00		



LEGEND

- WELL HEAD LOCATION
- ABOVE GROUND STORAGE TANK
- ⊕ MONITORING WELL LOCATION
- ⌈⌋ FORMER FACILITY
- EXTENT OF EXCAVATION
- FENCE LINE
- ⋯ CONTAINMENT BERM
- CONTAINMENT WALL

07/10/2025		DATE SAMPLED	
MW-1		SAMPLE ID	
B	88	BENZENE (ug/L)	
T	<1.00	TOLUENE (ug/L)	
E	4.4	ETHYLBENZENE (ug/L)	
X	<3.00	TOTAL XYLENES (ug/L)	
N	<5.00	NAPHTHALENE (ug/L)	
G	<1.00	1,2,4-TRIMETHYLBENZENE (ug/L)	
D	<1.00	1,3,5-TRIMETHYLBENZENE (ug/L)	

07/10/2025		DATE SAMPLED	
MW-1		SAMPLE ID	
TDS	2020	TOTAL DISSOLVED SOLIDS (mg/L)	
CL ⁻	107	CHLORIDE ION (mg/L)	
SO4 ⁻	1000	SULFATE ION (mg/L)	

Figure 4
GROUNDWATER CHEMISTRY MAP
October 6, 2025
Noble Energy, Inc.
Bockius 15-1, 8, Pfannebecker C14-32, D, C, 15-22
Q4 2025 Groundwater Monitoring
SENE Section 15, T4N, R64W, 6th PM
Weld County, Colorado
40.312693°, -104.527923°

Project No. C023-304	API #	Facility # 447608	
Date 12/9/25	Remediation # 28820	Filename 23304Q2	

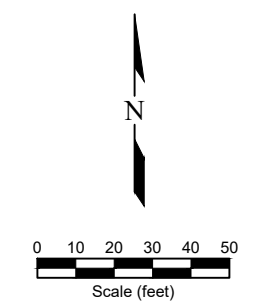
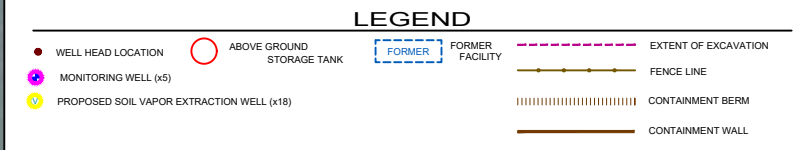


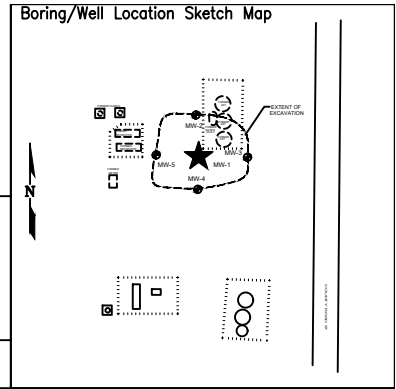
Figure 5
MONITORING WELLS AND PROPOSED SYSTEM WELLS MAP
 Noble Energy, Inc.
 Bockius 15-1, 8, Pfannebecker C14-32, D, C, 15-22
 SENE Section 15, T4N, R64W, 6th PM
 Weld County, Colorado
 40.312693°, -104.527923°

Project No. C023-304	API #	Facility # 447608	
Date 6/2/25	Remediation # 28820	Filename 23304T	

BORING LOGS



BORING/WELL CONSTRUCTION LOG



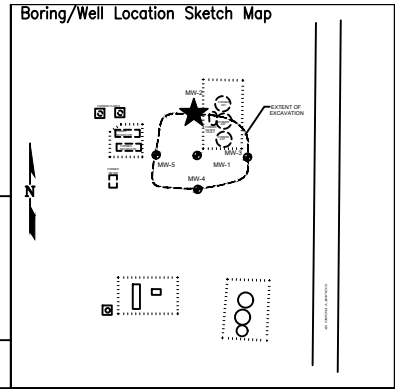
Page 1 of 1

Boring/Well No. MW-1		Total Depth 20'	Location Noble Energy, Inc. Bockius 15-1, 8, Pfannebecker C14-32, D, C 15-22 SENE Section 15, T4N, R64W, 6th PM Weld County, Colorado			
Project No./Name C023-304 / Noble Pfannebecker C14-32, D, C 15-22		Drilling Contractor/Driller DrillPro / Zack, Bennett				
Geologist/Office Ethan Black / Fremont Environmental, Inc.		Approved By				
Drilling Equipment/Method Geoprobe		Size/Type of Bit 2.5" direct push	Sampling Method direct push	Start/Finish Date 07/07/2025		
Well Installed? Yes <input checked="" type="checkbox"/> No <input type="checkbox"/>	Casing Mtrl./Dia. PVC/1"	Screen: Type Slotted Mtrl. PVC Length 10' Dia. 1" Slot Size 0.010"				
Elevation of: (ft. above datum)	Ground Surface	Top of Well Casing	Top of Screen	Bottom of Screen	Ground Water Surface/Date Measured	

DEPTH (feet)	WELL CONSTRUCTION		LITHOLOGY		Penetration Rate (blows/6")	Recovery (%)	Sample Interval (feet)	PID Values (ppm)
			GRAPHIC LOG	VISUAL DESCRIPTION				
5	Bentonite	1" Blank	SM	Fill				0.0
								0.0
								0.0
								0.0
								0.0
								0.0
								0.0
								0.0
								0.0
								0.0
10	#10-20 Silica Sand	1" Screen	GW	- Transition to gravel				0.0
								0.0
								0.0
								0.0
								0.0
								0.0
								0.0
								0.0
								0.0
								0.0
15			SP	Sand: gray to tan, fine, wet				0.0
								0.0
								0.0
								0.0
								0.0
								0.0
								0.0
								0.0
								0.0
								0.0
20								0.0
								0.0



BORING/WELL CONSTRUCTION LOG



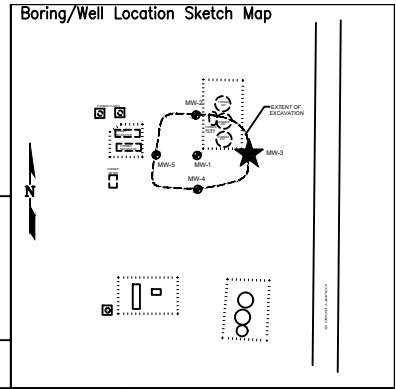
Page 1 of 1

Boring/Well No. MW-2		Total Depth 20'	Location Noble Energy, Inc. Bockius 15-1, 8, Pfannebecker C14-32, D, C 15-22 SENE Section 15, T4N, R64W, 6th PM Weld County, Colorado			
Project No./Name C023-304 / Noble Pfannebecker C14-32, D, C 15-22		Drilling Contractor/Driller DrillPro / Zack, Bennett				Approved By
Geologist/Office Ethan Black / Fremont Environmental, Inc.		Drilling Equipment/Method Geoprobe		Size/Type of Bit 2.5" direct push	Sampling Method direct push	Start/Finish Date 07/07/2025
Well Installed? Yes <input checked="" type="checkbox"/> No <input type="checkbox"/>	Casing Mtrl./Dia. PVC/1"	Screen: Type Slotted Mtrl. PVC Length 10' Dia. 1" Slot Size 0.010"				
Elevation of: (ft. above datum)		Ground Surface	Top of Well Casing	Top of Screen	Bottom of Screen	Ground Water Surface/Date Measured

DEPTH (feet)	WELL CONSTRUCTION	LITHOLOGY		Penetration Rate (blows/6")	Recovery (%)	Sample Interval (feet)	PID Values (ppm)
		GRAPHIC LOG	VISUAL DESCRIPTION				
5	Bentonite 1" Blank	SP	Sand				0.0
		CL	Clay: dark brown, non-plastic, moist		100%		0.0
10	#10-20 Silica Sand 1" Screen	SW	- fine sand 5.5' to 7.0'				0.0
		SP	- saturated		95%		0.0
15		SP	Sand: beige, fine plus medium, wet		100%		0.0
			- green/gray, clay lens				0.0
			- oxidized		100%		0.0
			- pink staining				0.0
20			TD 20'		100%		0.0



BORING/WELL CONSTRUCTION LOG



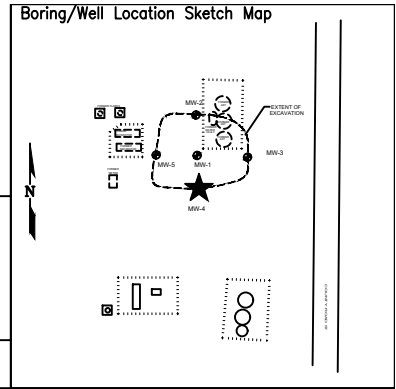
Page 1 of 1

Boring/Well No. MW-3		Total Depth 20'	Location Noble Energy, Inc. Bockius 15-1, 8, Pfannebecker C14-32, D, C 15-22 SENE Section 15, T4N, R64W, 6th PM Weld County, Colorado			
Project No./Name C023-304 / Noble Pfannebecker C14-32, D, C 15-22		Drilling Contractor/Driller DrillPro / Zack, Bennett				
Geologist/Office Ethan Black / Fremont Environmental, Inc.		Approved By				
Drilling Equipment/Method Geoprobe		Size/Type of Bit 2.5" direct push	Sampling Method direct push	Start/Finish Date 07/07/2025		
Well Installed? Yes <input checked="" type="checkbox"/> No <input type="checkbox"/>	Casing Mtrl./Dia. PVC/1"	Screen: Type Slotted Mtrl. PVC Length 10' Dia. 1" Slot Size 0.010"				
Elevation of: (ft. above datum)	Ground Surface	Top of Well Casing	Top of Screen	Bottom of Screen	Ground Water Surface/Date Measured	

DEPTH (feet)	WELL CONSTRUCTION	LITHOLOGY		Penetration Rate (blows/6")	Recovery (%)	Sample Interval (feet)	PID Values (ppm)
		GRAPHIC LOG	VISUAL DESCRIPTION				
5		SP	7" Sand	75%	75%	0.0	NS
		CL	Clay: brown, non-plastic, calcareous, silty, moist				
		SP	Sand: dark beige, very fine, moist, 2" clay lens at 7'				
			- wet				
			- increasing coarse grains, gray, wet				
15			- 1' greenish/gray clay lens at 15'	100%	100%	0.0	0.0
			- transition to brown oxidized sand with 2" clay lens interspersed				
20			TD 20'				



BORING/WELL CONSTRUCTION LOG



Page 1 of 1

Boring/Well No. MW-5		Total Depth 20'	Location Noble Energy, Inc. Bockius 15-1, 8, Pfannebecker C14-32, D, C 15-22 SENE Section 15, T4N, R64W, 6th PM Weld County, Colorado			
Project No./Name C023-304 / Noble Pfannebecker C14-32, D, C 15-22		Drilling Contractor/Driller DrillPro / Zack, Bennett				
Geologist/Office Ethan Black / Fremont Environmental, Inc.		Approved By				
Drilling Equipment/Method Geoprobe		Size/Type of Bit 2.5" direct push	Sampling Method direct push	Start/Finish Date 07/07/2025		
Well Installed? Yes <input checked="" type="checkbox"/> No <input type="checkbox"/>	Casing Mtrl./Dia. PVC/1"	Screen: Type Slotted Mtrl. PVC Length 10' Dia. 1" Slot Size 0.010"				
Elevation of: (ft. above datum)	Ground Surface	Top of Well Casing	Top of Screen	Bottom of Screen	Ground Water Surface/Date Measured	

DEPTH (feet)	WELL CONSTRUCTION		LITHOLOGY		Penetration Rate (blows/6")	Recovery (%)	Sample Interval (feet)	PID Values (ppm)
			GRAPHIC LOG	VISUAL DESCRIPTION				
5	Bentonite	1" Blank	CH	Clay: brown, plastic, moist				0.0
			SP	Sand: tan, fine, moist		80%	0.0	
			CL	- 2' clay lens, gray		80%	0.0	
10	#10-20 Silica Sand	1" Screen	SP	- wet, gray fine sand		100%	0.0	
			CL	- 6" clay lens		100%	0.0	
			SP	- sand transition from gray to brown		100%	0.0	
20				TD 20'		100%	0.0	