



**SECTOR CEMENT BOND
GAMMA RAY
CCL LOG**

Comp. OCCIDENTAL PETROLEUM CORP.
Well SAWDEY 21-30
Field WATTENBERG
Co. WELD
State COLORADO

Company **OCCIDENTAL PETROLEUM CORP.**
Well **SAWDEY 21-30**
Field **WATTENBERG**
County **WELD** State **COLORADO**

Location: **1474' FNL & 1430' FWL** API #: 05-123-30355 Other Services
SEC 30 TWP 2N RGE 68W
Permanent Datum GL Elevation 4994'
Log Measured From GL 0' Above Perm. Datum
Drilling Measured From KB
Elevation
K.B. 5009'
D.F. N/A
G.L. 4994'

Date of Service	25-SEP-2025
Run Number	ONE
Depth Driller or PBTD	7917'
Depth Logger	970'
Bottom Log Interval	970'
Top Log Interval	SURFACE
Open Hole Size	7-7/8"
Type Fluid	H2O
Fluid Level	SURFACE
Fluid Density	N/A
Max. Recorded Temperature	71° F.
Max. Wellhead Pressure	ZERO PSI
Wellhead Connection	7-1/16" 5K
Estimated Cement Top	SEE LOG
Unit Number	L-05
Wireline Size	9/32"
Location	FORT MORGAN
Recorded By	J. KOTT
Witnessed By	JOSE CASTILLO
Surface Casing	Size 8-5/8" W/Ft 24# Top SURFACE Bottom 882'
Production Casing	4-1/2" 11.6# SURFACE
Liner Casing	
Tubing Record	

<<< Fold Here >>>

All interpretations are opinions based on inferences from electrical or other measurements and Ranger Energy Services cannot and does not guarantee the accuracy or correctness of any interpretation, and Ranger Energy Services will not be liable or responsible for any loss, costs, damages, or expenses incurred or sustained by anyone resulting from any interpretation made by any of our officers, agents or employees.

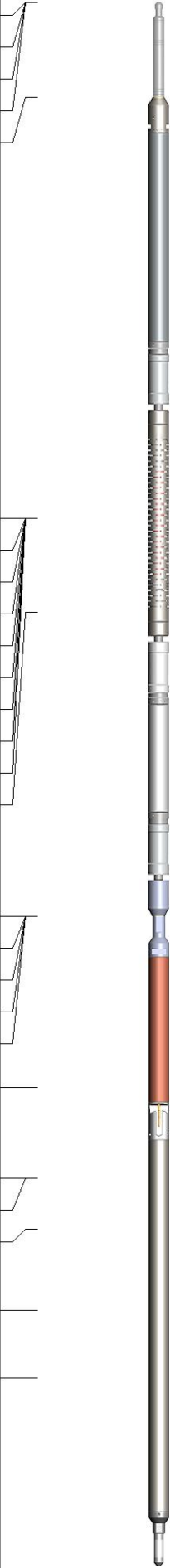
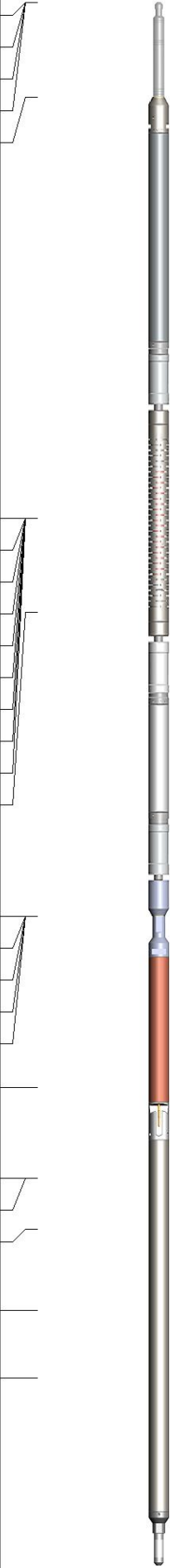
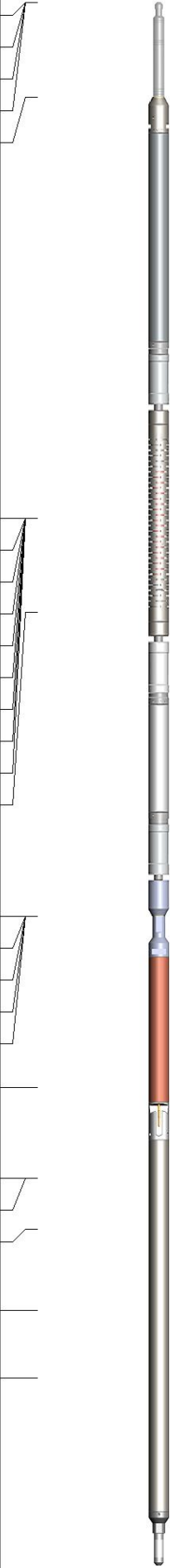
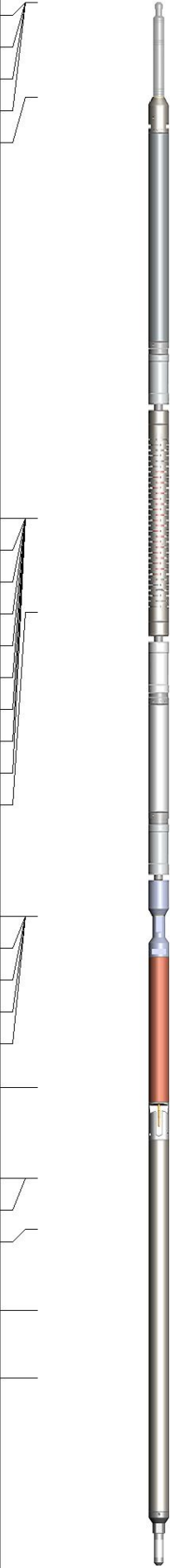
Comments

N/A DENOTES NOT AVAILABLE OR NON-APPLICABLE.
LOG CORRELATED TO GL

THANK YOU FOR USING RANGER ENERGY SERVICES! FIELD TICKET #05-1142745

Your Ranger Energy Services Crew	Tool Data - Services	Serial Number
Engineer: J. KOTT	PROBE 2-3/4" RBT	FW2208-107
Operator: C. MARCH	PROBE GR/CCL	FW2204-017
Operator: R. CINTORA		
Operator:		

Quantity	Offset (ft)	Substrate	Description	Length (ft)	O.D. (in)	Weight (lb)
----------	-------------	-----------	-------------	-------------	-----------	-------------

Sensor	Offset (ft)	Schematic	Description	Length (ft)	O.D. (in)	Weight (lb)
GCT_FMWR	16.71		Cable_Head-1_7/16 Titan 1 7/16" Cable Head	1.02	1.44	3.31
mSec_Count	16.71					
RBT_Status	16.71					
Error_Ct	16.71					
RBT_HV	15.69					
			RBT8-RADII-275C (RBT275C_Base) Probe 2.75" RADII 8 Sector Bond Tool	8.75	2.75	
WVFS8	11.19					
WVFS7	11.19					
WVFS6	11.19					
WVFS5	11.19					
WVFS4	11.19					
WVFS3	11.19					
WVFS2	11.19					
WVFS1	11.19					
WVF3FT	11.19					
WVF5FT	10.19					
						
RBT_ACCZ	6.94					
RBT_ACCY	6.94					
RBT_ACCX	6.94					
WVFSYNC	6.94					
WVFCAL	6.94					
GCT_HV	5.10					
			GCacc-GCT275-0000 (GCT275-0000_base) Probe 2.75" Gamma Ray - CCL w/ Temp	6.61	2.75	65.00
CCL\$2	4.14					
CCL\$1	4.14					
GCT_Temp	3.59					
GR	2.72					
GCT_IntTemp	2.00					

Dataset: I05-1142745_oxy_sawdey 21-30_0512330355_20250925_scbl-gr-ccl.db: field/well/run1/pass4
 Total length: 16.71 ft
 Total weight: 69.31 lb
 O.D.: 2.75 in

Log Variables

DatabaseC:\ProgramData\Warrior\Data\05-1142745_oxy_sawdey 21-30_0512330355_20250925_s
Dataset field/well/run1/pass4/_vars_

Top - Bottom

BOREID in 7.875	BOTTEMP degF 71	CASEOD in 4.5	CASETHCK in 0.25	CASEWGHT lb/ft 11.6	MAXAMPL mV 81.2	MINAMPL mV 0.7	MINATTN db/ft 0.8
PERFS No	PPT usec 249	SRFTEMP degF 80	TDEPTH ft 970				

Variable Description

BOREID : Borehole I.D.
BOTTEMP : Bottom Hole Temperature
CASEOD : Casing O.D.
CASETHCK : Casing Thickness

CASEWGHT : Casing Weight
MAXAMPL : Maximum Amplitude
MINAMPL : Minimum Amplitude
MINATTN : Minimum Attenuation

PERFS : Perforation Flag
PPT : Predicted Pipe Time
SRFTEMP : Surface Temperature
TDEPTH : Total Depth

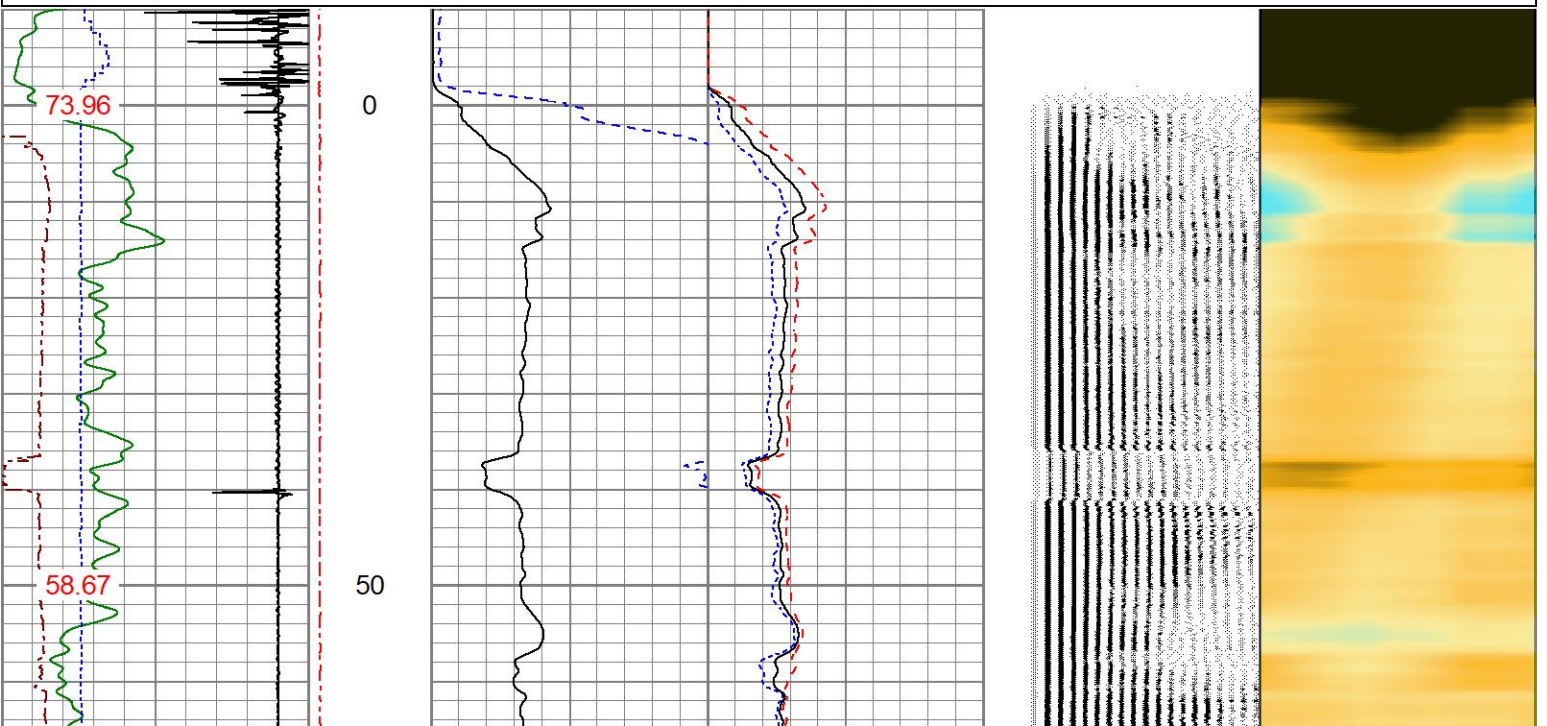


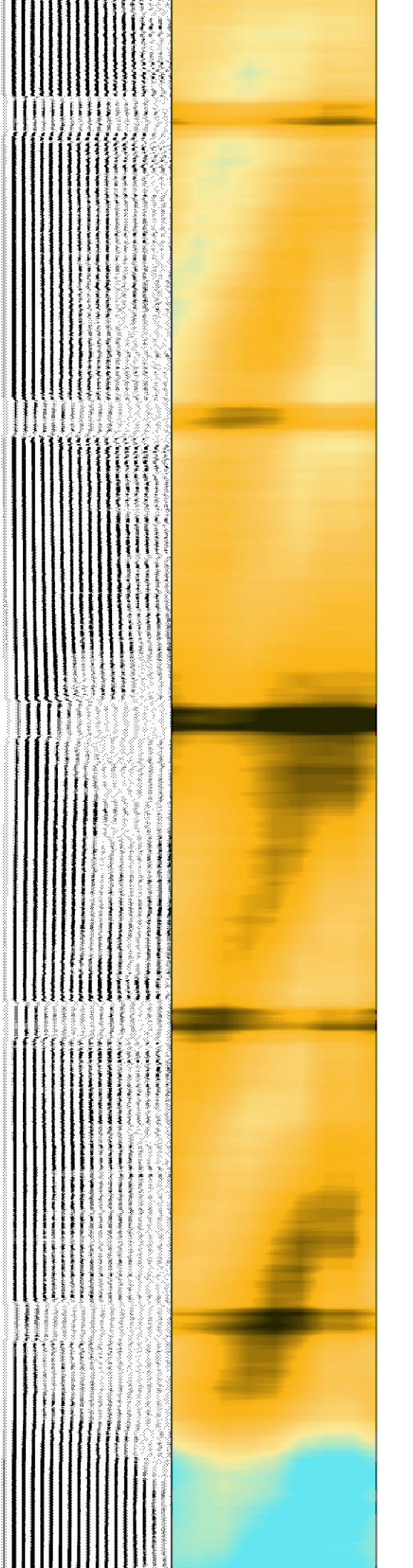
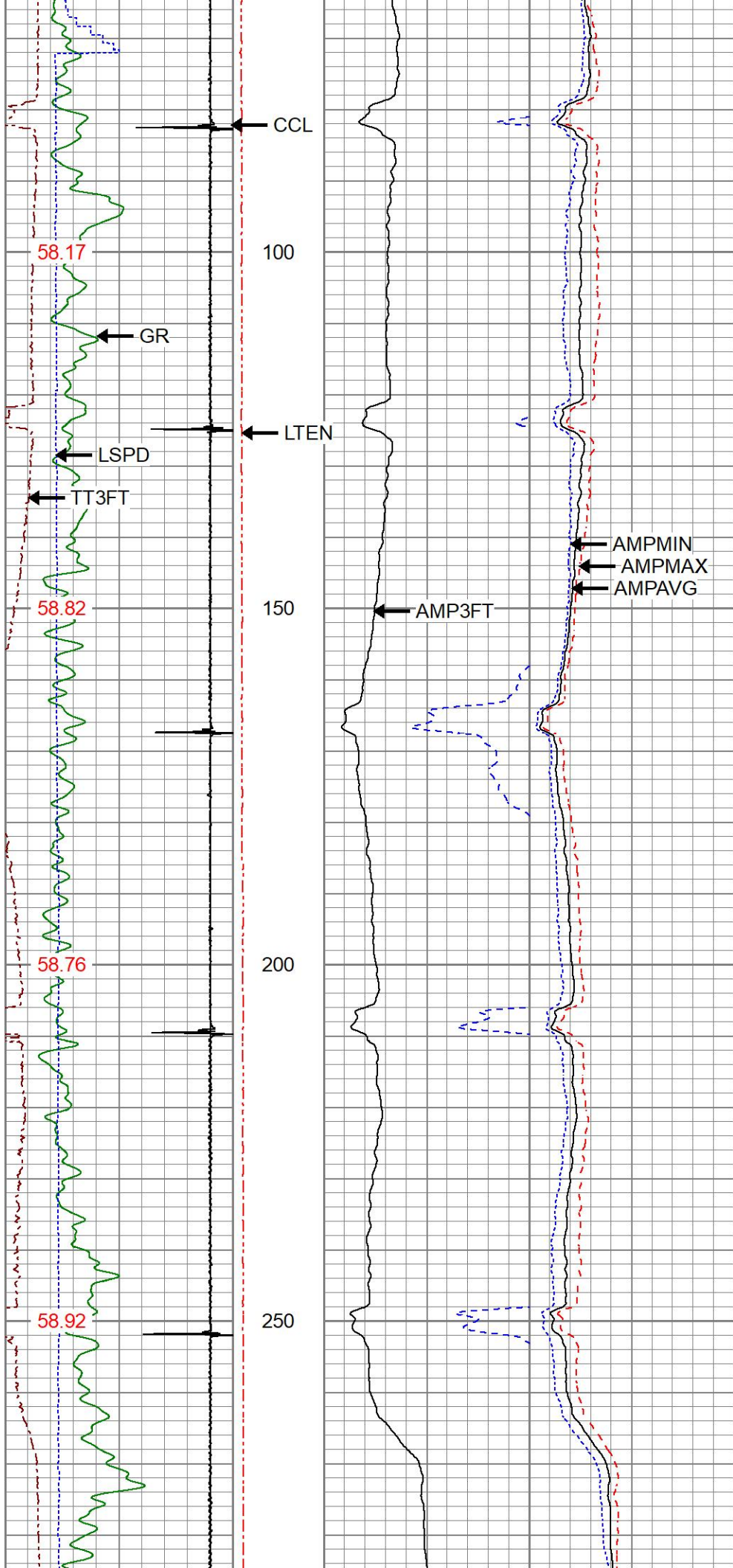
MAIN PASS

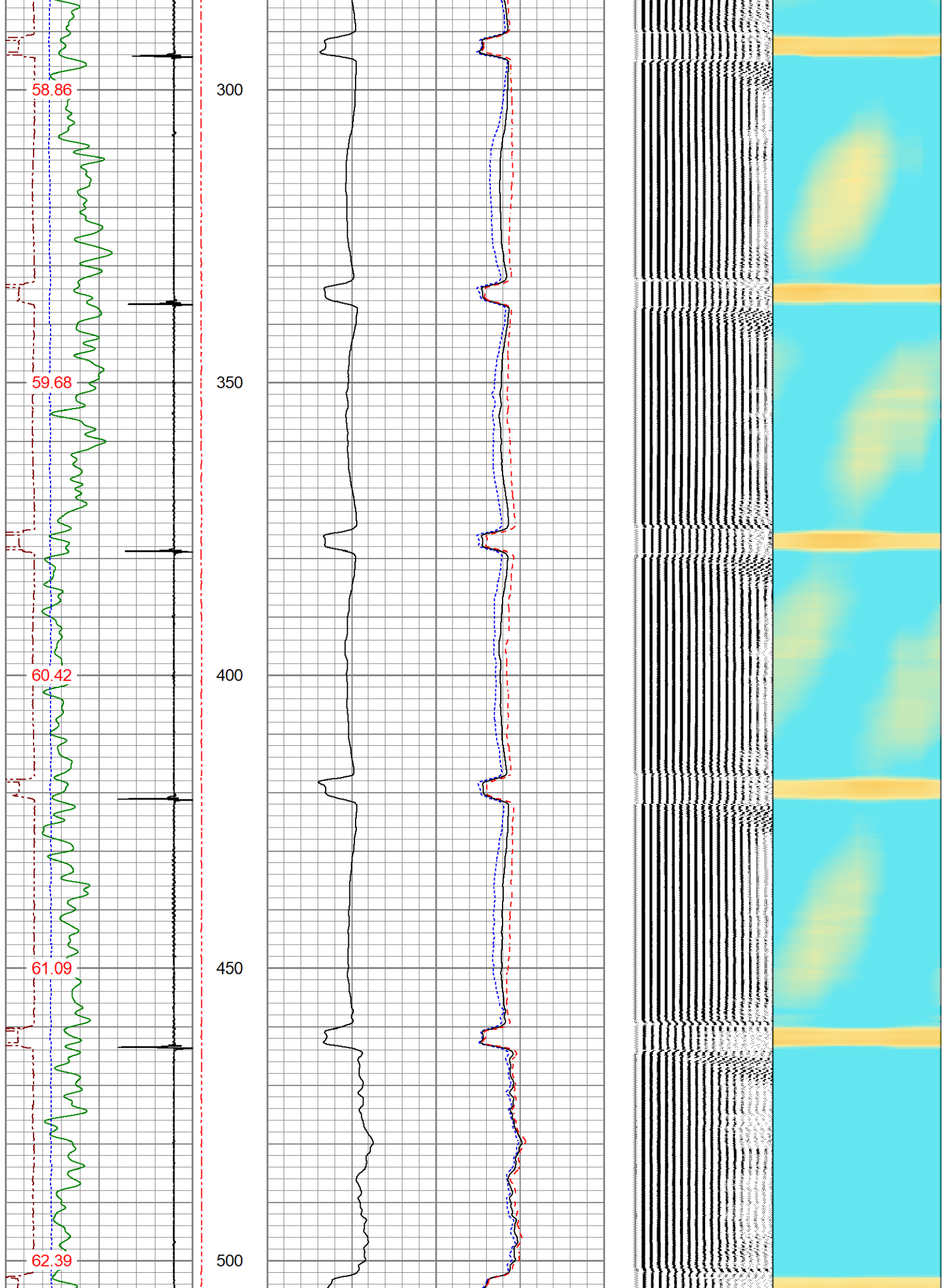
ZERO PSI APPLIED AT SURFACE

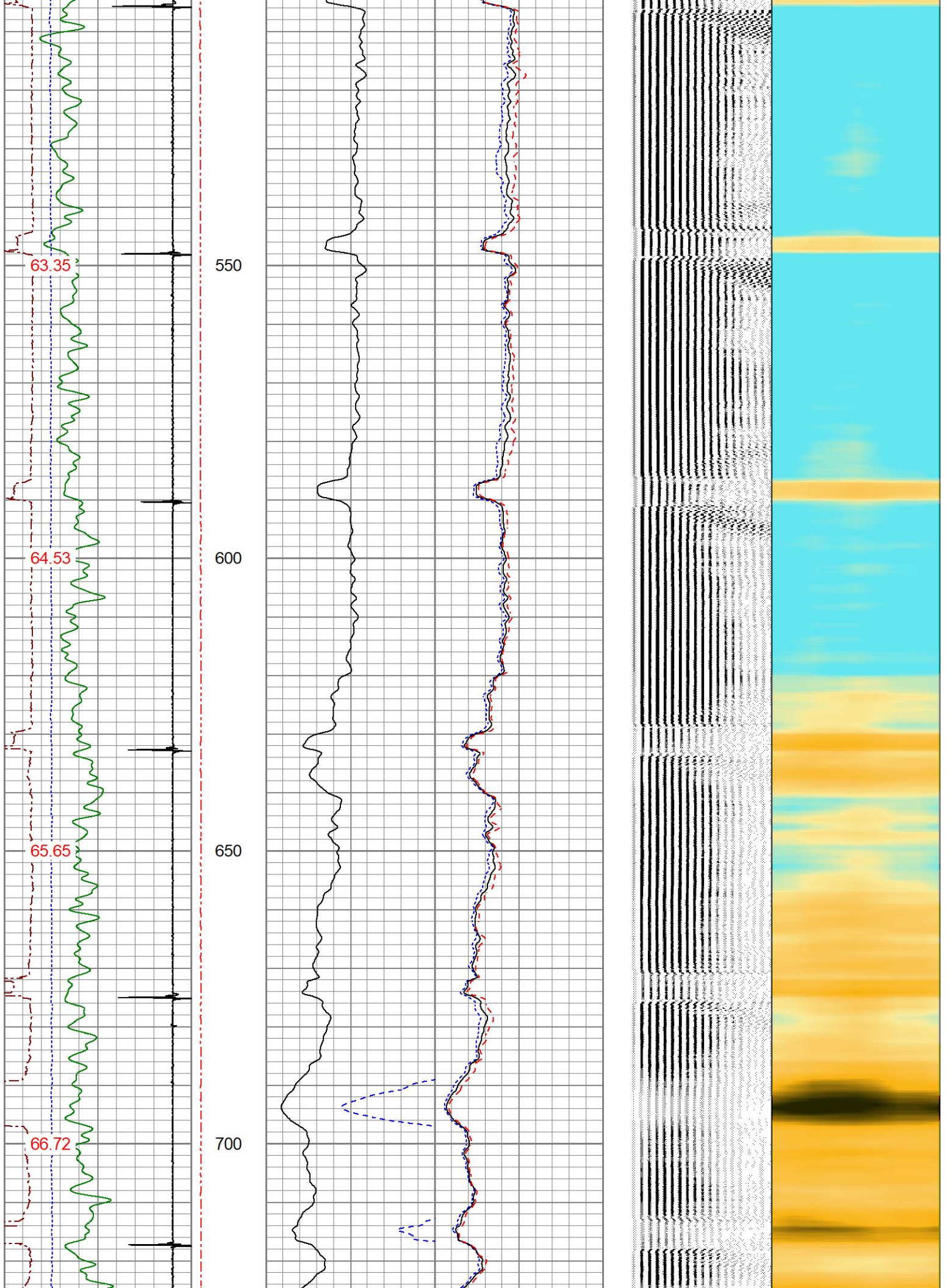
Database File I05-1142745_oxy_sawdey 21-30_0512330355_20250925_scbl-gr-ccl.db
Dataset Pathname pass4
Presentation Format res_scbl 8sec-gr-ccl
Dataset Creation Thu Sep 25 14:11:30 2025
Charted by Depth in Feet scaled 1:240

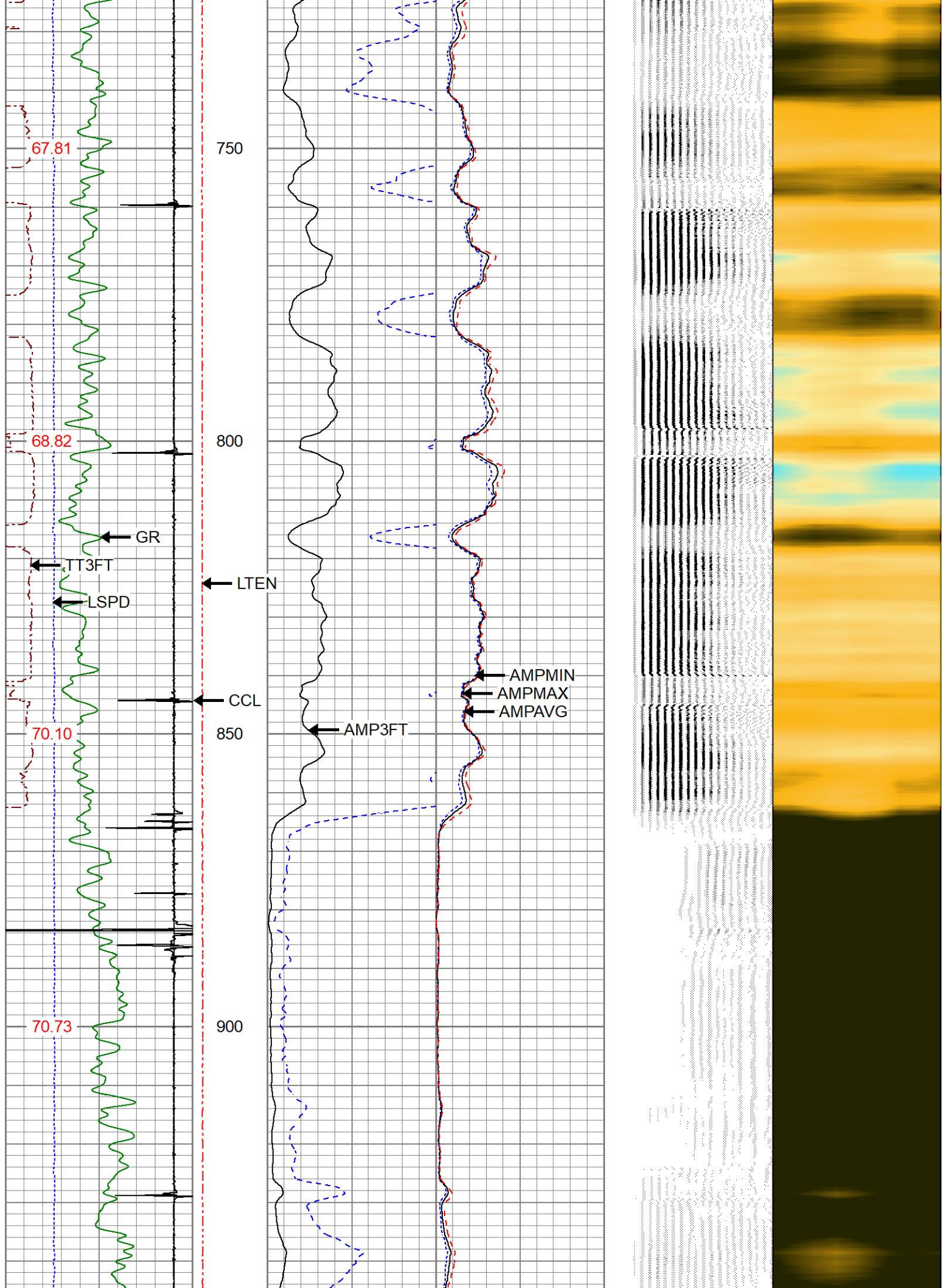
280 3FT TT (usec) 180	LTEN	3' Amplitude	0 Sector Min Amp 150	200 VDL (usec) 1200	1 Sector Map	8
0 GR (GAPI) 150	(lb)	(mV) 100	Sector Avg Amp			
-150 LSPD (ft/min) 150	0 2000	3' Amplified	0 150			
-9 CCL\$1 1		Amplitude X 5	Sector Max Amp			
GCT_Temp		(mV) 20	0 150			
(degF)						

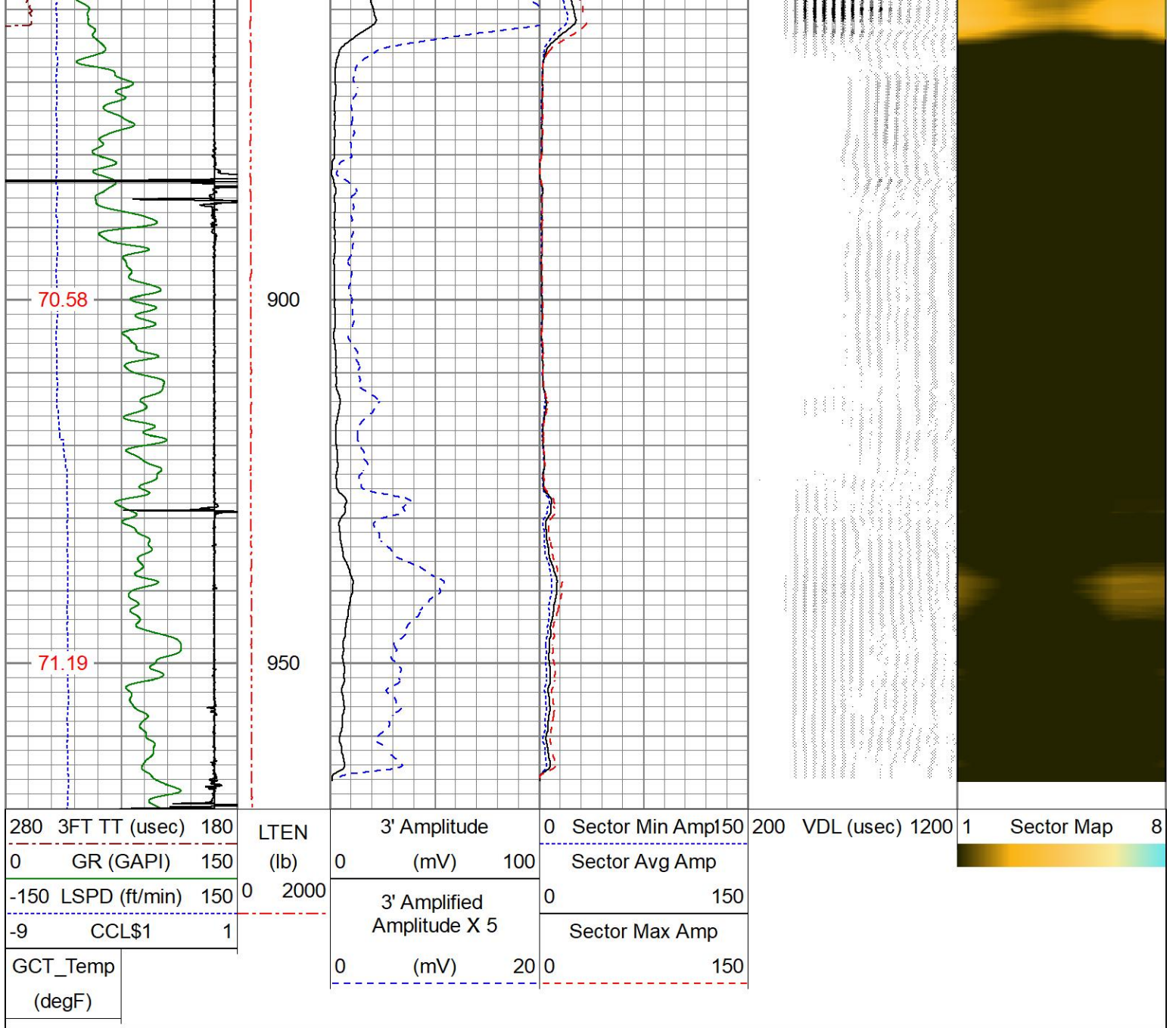












Calibration Report

Database File I05-1142745_oxy_sawdey 21-30_0512330355_20250925_scbl-gr-ccl.db
 Dataset Pathname pass4
 Dataset Creation Thu Sep 25 14:11:30 2025

Gamma Ray Calibration Report

Serial Number: GCT275-0000_base
 Tool Model: GCT275-0000
 Performed: (Not Performed)

Calibrator Value: 1.0 GAPI

Background Reading: 0.0 cps
 Calibrator Reading: 1.0 cps

Sensitivity: 1.0000 GAPI/cps

Segmented Cement Bond Log Calibration Report

Serial Number: RBT275C_Base
 Tool Model: RADII-275C

Calibration Casing Diameter: 4.500 in
 Calibration Depth: 13.133 ft

Master Calibration, performed Thu Sep 25 13:34:42 2025:

	Raw (v)		Calibrated (mv)		Results	
	Zero	Cal	Zero	Cal	Gain	Offset
3'	0.000	1.022	0.700	81.196	78.787	0.700
CAL	0.000	1.016				
5'	0.000	0.980	0.700	81.196	82.171	0.700
SUM						
S1	0.000	1.014	0.000	100.000	98.622	0.000
S2	0.000	1.006	0.000	100.000	99.417	0.000
S3	0.000	1.018	0.000	100.000	98.245	0.000
S4	0.000	1.004	0.000	100.000	99.600	0.000
S5	0.000	1.041	0.000	100.000	96.099	0.000
S6	0.000	1.037	0.000	100.000	96.438	0.000
S7	0.000	1.038	0.000	100.000	96.325	0.000
S8	0.000	1.042	0.000	100.000	95.971	0.000

Internal Reference Calibration, performed (Not Performed):

	Raw (v)		Calibrated (v)		Results	
	Zero	Cal	Zero	Cal	Gain	Offset
CAL	0.000	0.000	0.000	1.016	1.000	0.000

Air Zero Calibration, performed Thu Sep 25 13:33:53 2025:

	Raw (v)		Calibrated (v)		Results	
	Zero		Zero		Offset	
3'	0.000		0.000			0.000
5'	0.000		0.000			0.000
SUM						
S1	0.000		0.000			0.000
S2	0.000		0.000			0.000
S3	0.000		0.000			0.000
S4	0.000		0.000			0.000
S5	0.000		0.000			0.000
S6	0.000		0.000			0.000
S7	0.000		0.000			0.000
S8	0.000		0.000			0.000

Inclinometer Calibration Report

Performed:	Mon Jan 24 10:23:58 2022				
	Low Read.	High Read.	Low Ref.	High Ref.	
X Accelerometer	-918.00	908.00	-1.00	1.00	gee
Y Accelerometer	-941.00	887.00	-1.00	1.00	gee
Z Accelerometer	1.35	894.18	0.00	1.00	gee



Company

OCCIDENTAL PETROLEUM CORP.

Well

SAWDEY 21-30

Field

WATTENBERG

County

WELD

State

COLORADO