



CEMENT | FLUID | INFRASTRUCTURE SERVICES

WWW.MAGNUMSERVICES.COM



Post Job Report

Prepared for **CIVITAS RESOURCES**
STATE LA PLATA 5-65 13-14-15-16 1BH
API # 005-07594
Surface Casing Cement

September 1st, 2025

Disclaimer and Confidentiality Statement

This report and all accompanying materials, are confidential and intended solely for the use of the individual or entity to whom they are addressed. The interpretations provided by the Magnum Cementing Services Technical Team are based on available data and best practices at the time of reporting. If you are not the intended recipient, you are hereby notified that any disclosure, copying, distribution, or use of this information is strictly prohibited. If you have received this report in error, please notify the sender immediately and delete it from your system. Magnum Cementing Services assumes no responsibility for decisions made based on the contents of this report. The final use and application of the information contained herein remain the sole responsibility of the Customer.

Treatment Report



Customer: CIVITAS RESOURCES
Rep:
Supervisor: MICHAEL LOPEZ
Job Type: US Primary
 Casing-Surface

Rig: Patterson 572
Well: STATE LA PLATA 5-65 13-14-15-16 1BH
UWI: STATE LA PLATA 5-65 13-14-15-16 1BH
Surface: STATE LA PLATA 5-65 13-14-15-16 1BH

Job #: JOB00217111
Job Date: AUG 30 @ 00:00
Time Requested: AUG 30 @ 00:00
Time Arrived: AUG 31 @ 16:00
Time Released: AUG 31 @ 22:00

CONDUCTOR SIZE	16"	CONDUCTOR WEIGHT	65 LBS	Surface Casing Size (IN)	9.625
Surface Casing Grade	J-55	Surface Casing Weight	36 LBS	Casing DEPTH	80'
Float Depth (FT)	3538.5	OPEN HOLE SIZE	13.5"	Max Pressure (PSI)	2500
Mud Density	8.4 LBS	Mud Type	FW	Plug Type	Rig
TMD (FT)	3615	TVD (FT)	3279.17		Supplie d
9.625" CSG DEPTH	3605.8'				

Preflush: 10 BBLs MAG Mark & 10 BBLs Fresh Water & 10 BBLs Fresh Water

	Circulation Time:	1
	Slurry Temp:	75
	Water Temp:	65
	Bulk Temp:	68
Slurry Returns:	20	Plug Bumped: No
	Pump Out Lines:	No
	Bulk Sample:	Yes
	Water Sample:	Yes
	Slurry Sample:	Yes
	Float Held:	Yes

Displace: 273.8 BBLs Fresh Water

1589 sk MAG S 13.3 + 0.10% MCDF-P + 1.00% MCLC-2 + 0.10% MCLC-F

YIELD: 1.46 ft³/sk 413.2 bbls; Mix Water: 7.05 gal/sk 132 bbls

Time	Pressure PSI	Annular Pressure PSI	Volume Per Stage BBLs	Total Stage Volume BBLs	Rate BBLs/ min	Treatment Detail
16:00	0.00					Arrive on Location - SPOKE WITH COMPANY MAN; WATER TESTED: PH-8; HARDNESS-25 PPM; CHLORIDES- 296 PPM
17:15	0.00					Safety Meeting
17:45	350.00		20	20	3	Fill Lines - BOTTOM PLUG LOADED; DYE @ 17:45; FRESHWATER @ 17:48
17:53	3,000.00					Start Pressure Test
17:55	200.00		10	10	6.5	Pump Preflush - FRESHWATER
17:58	900.00		413.2	413.2	7	Pump Slurry - MAG S 13.3; 1589 SKS; 1.46 CUFT/SKS; 7.05 GAL/SK; TT: 3:19; 85 LBS/SK; TOT: SURFACE: 20 BBL; WET SAMPLE WEIGHED
19:15	0.00					Stop Pumping
19:18	0.00					Drop Plug - COMPANY MAN VERIFIED
19:19	1,260.00		253.8	253.8	7	Displace - FRESHWATER; FIRST 20 BBLs - 4 BPM - 50 PSI; 70 BBLs - 7 BPM - 300 PSI ; 100 BBLs - 7 BPM - 400 PSI; 150 BBLs - 7 BPM - 700 PSI; 200 BBLs - 7 BPM - 900 PSI; 250 BBLs - 7 BPM - 1260 PSI; (HESITATE FOR 5 MINS @ 250 BBLs AWAY (20:00-20:05))
20:06	950.00		20	273.8	3	Decrease Rate - LAST 20 BBLs
20:14	1,500.00					Bump Plug - 1500 PSI; CIRC. PRESS. - 1000 PSI
20:15	0.00					Check Floats - FLOATS HELD : 1.5 BBL BACK; 30 MIN CSG TEST: 20:18 - 20:50
22:00	0.00					Leave Location - WASH UP THEN LEAVE



Customer: Civitas Resources

Date: August 31, 2025

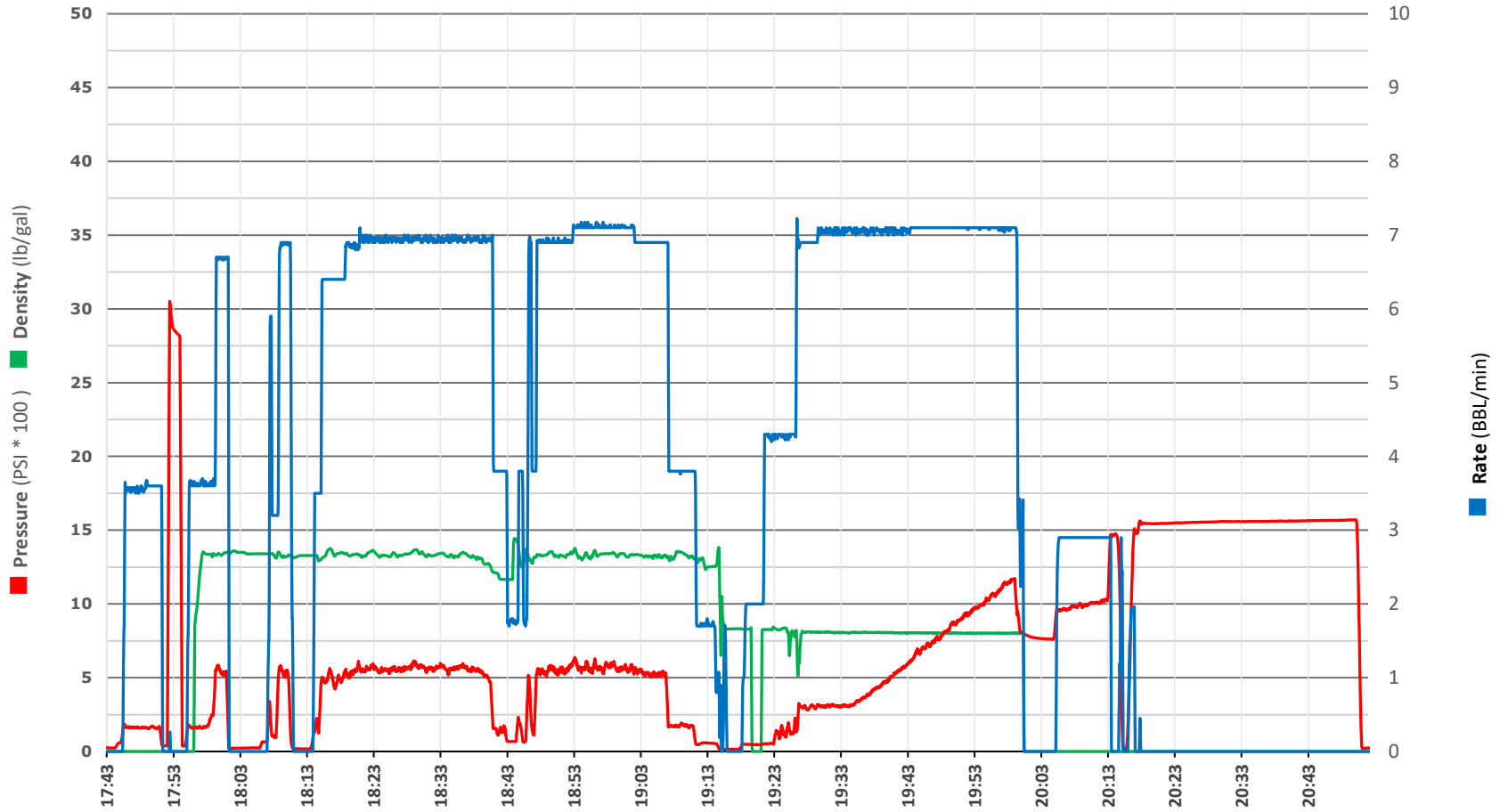
Ticket: JOB00217111

Location: STATE LA PLATA 5-65 13-14-15-16-1BH

Well Name: STATE LA PLATA 5-65 13-14-15-16-1BH

Job Type: 9.625" SURFACE

Magnum Unit #: 1507





Customer: Civitas Resources

Date: August 31, 2025

Ticket: JOB00217111

Location: STATE LA PLATA 5-65 13-14-15-16-1BH

Well Name: STATE LA PLATA 5-65 13-14-15-16-1BH

Job Type: 30 MIN CSG TEST

Magnum Unit #: 1507

