

# **CRESTONE PEAK RESOURCES**

**ARAPAHOE COUNTY**

**SEC 13-T5S-R65W**

**STATE LA PLATA 5-65 13-14-15-16 1BH - AS BUILT**

**OWB**

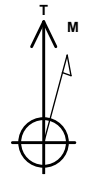
**Design: FINAL**

## **Standard Survey Report**

**13 December, 2025**

Project: ARAPAHOE COUNTY  
 Site: SEC 13-T5S-R65W  
 Well: STATE LA PLATA 5-65 13-14-15-16 1BH - AS BUILT  
 Wellbore: OWB  
 Design: FINAL

PROJECT DETAILS: ARAPAHOE COUNTY  
 Geodetic System: US State Plane 1983  
 Datum: North American Datum 1983  
 Ellipsoid: GRS 1980  
 Zone: Colorado Central Zone  
 System Datum: Mean Sea Level



Azimuths to True North  
 Magnetic North: 7.22°  
 Magnetic Field  
 Strength: 51074.2nT  
 Dip Angle: 65.86°  
 Date: 12/8/2025  
 Model: IGRF2020

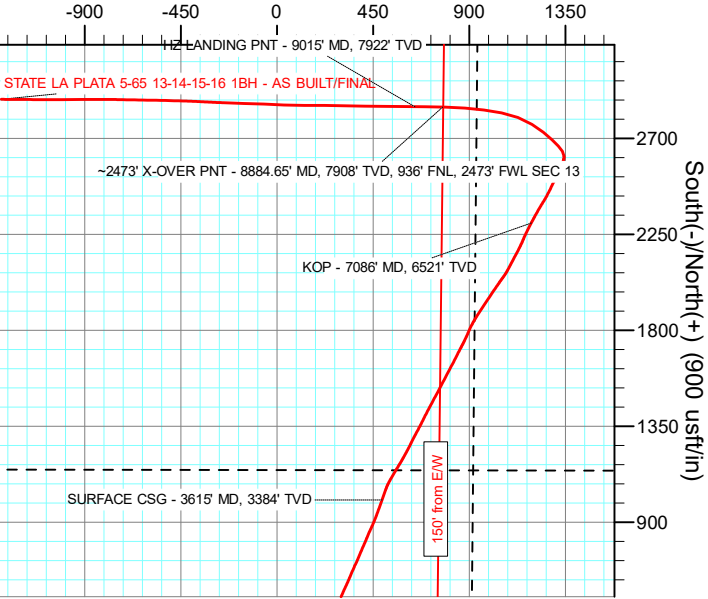
WELL DETAILS: STATE LA PLATA 5-65 13-14-15-16 1BH - AS BUILT

5898.00						Slot
+N/-S	+E/-W	Northing	Easting	Latitude	Longitude	
0.00	0.00	1649547.65	3248860.09	39.613478°N	104.616656°W	

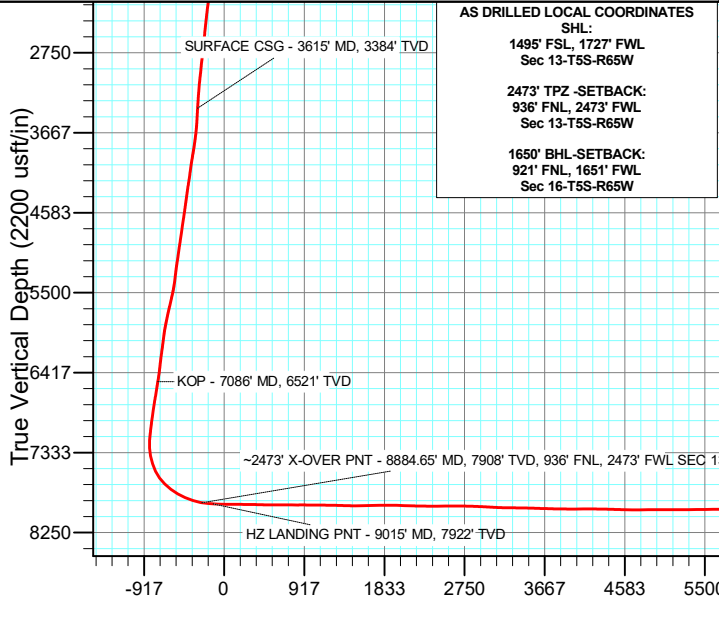
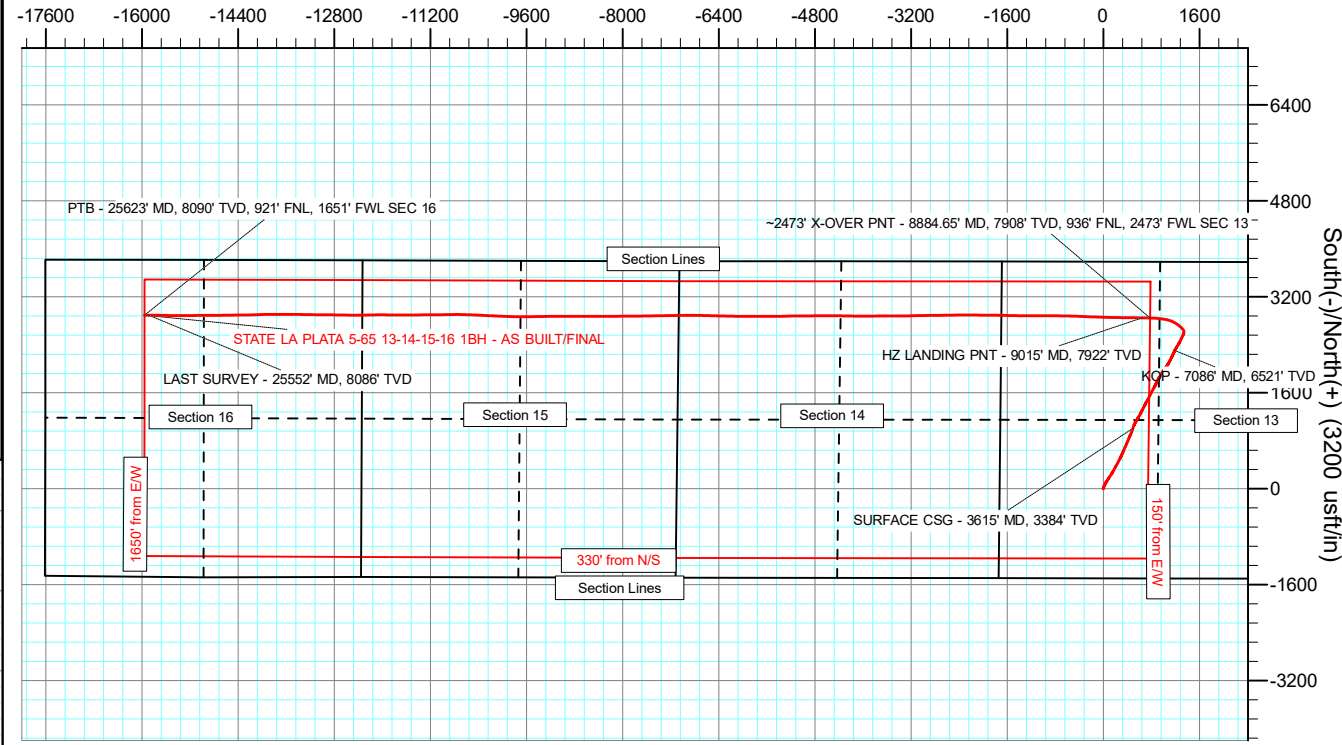
ANNOTATIONS

MD	Inc	Azi	TVD	+N/-S	+E/-W	VSec	Departure	Annotation
3615.00	20.41	19.46	3384.43	1003.91	491.37	-304.35	1128.00	SURFACE CSG - 3615' MD, 3384' TVD
7086.00	28.53	27.99	6520.85	2302.56	1189.74	-759.79	2606.43	KOP - 7086' MD, 6521' TVD
8884.65	81.22	271.37	7908.27	2846.69	775.25	-254.86	3605.19	~2473' X-OVER PNT - 8884.65' MD, 7908' TVD, 936' FNL, 2473' FWL SEC 13
9015.00	86.91	270.63	7921.91	2848.57	645.68	-127.03	3734.77	HZ LANDING PNT - 9015' MD, 7922' TVD
25552.00	87.19	270.45	8086.10	2893.04	-15885.38	16146.67	20268.37	LAST SURVEY - 25552' MD, 8086' TVD
25623.00	87.19	270.45	8089.58	2893.60	-15956.29	16216.54	20339.29	PTB - 25623' MD, 8090' TVD, 921' FNL, 1651' FWL SEC 16

West(-)/East(+) (900 usft/in)



West(-)/East(+) (3200 usft/in)



AS DRILLED LOCAL COORDINATES  
 SHL:  
 1495' FSL, 1727' FWL  
 Sec 13-T5S-R65W  
 2473' TPZ-SETBACK:  
 936' FNL, 2473' FWL  
 Sec 13-T5S-R65W  
 1650' BHL-SETBACK:  
 921' FNL, 1651' FWL  
 Sec 16-T5S-R65W

Vertical Section at 280.28° (2200 usft/in)

# Civitas Resources

## Survey Report

<b>Company:</b>	CRESTONE PEAK RESOURCES	<b>Local Co-ordinate Reference:</b>	Well STATE LA PLATA 5-65 13-14-15-16 1BH - AS BUILT
<b>Project:</b>	ARAPAHOE COUNTY	<b>TVD Reference:</b>	KB 25' @ 5923.00usft
<b>Site:</b>	SEC 13-T5S-R65W	<b>MD Reference:</b>	KB 25' @ 5923.00usft
<b>Well:</b>	STATE LA PLATA 5-65 13-14-15-16 1BH - AS BUILT	<b>North Reference:</b>	True
<b>Wellbore:</b>	OWB	<b>Survey Calculation Method:</b>	Minimum Curvature
<b>Design:</b>	FINAL	<b>Database:</b>	EDM

<b>Project</b> ARAPAHOE COUNTY		
<b>Map System:</b>	US State Plane 1983	<b>System Datum:</b> Mean Sea Level
<b>Geo Datum:</b>	North American Datum 1983	
<b>Map Zone:</b>	Colorado Central Zone	Using geodetic scale factor

<b>Site</b> SEC 13-T5S-R65W					
<b>Site Position:</b>		<b>Northing:</b>	1,648,038.50 usft	<b>Latitude:</b>	39.609381°N
<b>From:</b>	Lat/Long	<b>Easting:</b>	3,247,131.81 usft	<b>Longitude:</b>	104.622842°W
<b>Position Uncertainty:</b>	0.00 usft	<b>Slot Radius:</b>	13.200 in	<b>Grid Convergence:</b>	0.55 °

<b>Well</b> STATE LA PLATA 5-65 13-14-15-16 1BH - AS BUILT					
<b>Well Position</b>	<b>+N/-S</b>	0.00 usft	<b>Northing:</b>	1,649,547.65 usft	<b>Latitude:</b> 39.613478°N
	<b>+E/-W</b>	0.00 usft	<b>Easting:</b>	3,248,860.10 usft	<b>Longitude:</b> 104.616656°W
<b>Position Uncertainty</b>		0.00 usft	<b>Wellhead Elevation:</b>	usft	<b>Ground Level:</b> 5,898.00 usft

<b>Wellbore</b> OWB					
<b>Magnetics</b>	<b>Model Name</b>	<b>Sample Date</b>	<b>Declination (°)</b>	<b>Dip Angle (°)</b>	<b>Field Strength (nT)</b>
	IGRF2020	12/8/2025	7.22	65.86	51,074.24607391

<b>Design</b> FINAL					
<b>Audit Notes:</b>					
<b>Version:</b>	1.0	<b>Phase:</b>	ACTUAL	<b>Tie On Depth:</b>	0.00
<b>Vertical Section:</b>	<b>Depth From (TVD) (usft)</b>	<b>+N/-S (usft)</b>	<b>+E/-W (usft)</b>	<b>Direction (°)</b>	
	0.00	0.00	0.00	280.28	

<b>Survey Program</b>		<b>Date</b>	12/13/2025		
<b>From (usft)</b>	<b>To (usft)</b>	<b>Survey (Wellbore)</b>	<b>Tool Name</b>	<b>Description</b>	
208.00	25,623.00	FINAL (OWB)	MWD OWSG	OWSG MWD - Standard	

<b>Survey</b>										
Measured Depth (usft)	Inclination (°)	Azimuth (°)	Vertical Depth (usft)	+N/-S (usft)	+E/-W (usft)	Vertical Section (usft)	Dogleg Rate (°/100ft)	Build Rate (°/100ft)	Turn Rate (°/100ft)	
0.00	0.00	0.00	0.00	0.00	0.00	0.00	0.00	0.00	0.00	0.00
208.00	0.66	278.96	208.00	0.19	-1.18	1.20	0.32	0.32	0.00	
297.00	1.06	221.67	296.99	-0.35	-2.24	2.14	1.01	0.45	-64.37	
386.00	1.02	223.96	385.97	-1.53	-3.33	3.01	0.06	-0.04	2.57	
475.00	0.80	6.34	474.97	-1.49	-3.82	3.49	1.94	-0.25	159.98	
570.00	3.14	17.33	569.90	1.66	-2.97	3.22	2.48	2.46	11.57	
664.00	5.79	21.73	663.61	8.52	-0.44	1.96	2.84	2.82	4.68	
759.00	8.18	20.10	757.90	19.32	3.65	-0.15	2.52	2.52	-1.72	
854.00	11.18	20.94	851.54	34.27	9.27	-3.00	3.16	3.16	0.88	

# Civitas Resources

## Survey Report

<b>Company:</b>	CRESTONE PEAK RESOURCES	<b>Local Co-ordinate Reference:</b>	Well STATE LA PLATA 5-65 13-14-15-16 1BH - AS BUILT
<b>Project:</b>	ARAPAHOE COUNTY	<b>TVD Reference:</b>	KB 25' @ 5923.00usft
<b>Site:</b>	SEC 13-T5S-R65W	<b>MD Reference:</b>	KB 25' @ 5923.00usft
<b>Well:</b>	STATE LA PLATA 5-65 13-14-15-16 1BH - AS BUILT	<b>North Reference:</b>	True
<b>Wellbore:</b>	OWB	<b>Survey Calculation Method:</b>	Minimum Curvature
<b>Design:</b>	FINAL	<b>Database:</b>	EDM

Survey										
Measured Depth (usft)	Inclination (°)	Azimuth (°)	Vertical Depth (usft)	+N/-S (usft)	+E/-W (usft)	Vertical Section (usft)	Dogleg Rate (°/100ft)	Build Rate (°/100ft)	Turn Rate (°/100ft)	
948.00	14.01	23.85	943.27	53.19	17.13	-7.36	3.08	3.01	3.10	
1,043.00	15.91	28.96	1,035.05	75.11	28.08	-14.23	2.43	2.00	5.38	
1,137.00	17.54	29.67	1,125.07	98.69	41.33	-23.06	1.75	1.73	0.76	
1,231.00	19.13	32.22	1,214.29	124.03	56.56	-33.52	1.89	1.69	2.71	
1,326.00	20.19	33.55	1,303.75	150.86	73.92	-45.81	1.21	1.12	1.40	
1,421.00	22.32	33.28	1,392.29	179.61	92.88	-59.34	2.24	2.24	-0.28	
1,515.00	23.29	33.59	1,478.94	210.01	112.96	-73.67	1.04	1.03	0.33	
1,610.00	23.69	33.32	1,566.06	241.60	133.83	-88.57	0.44	0.42	-0.28	
1,705.00	25.06	28.57	1,652.60	275.23	153.94	-102.36	2.52	1.44	-5.00	
1,799.00	25.90	29.31	1,737.46	310.61	173.51	-115.30	0.96	0.89	0.79	
1,894.00	26.43	29.76	1,822.72	347.06	194.16	-129.12	0.60	0.56	0.47	
1,988.00	25.23	28.30	1,907.33	382.86	214.04	-142.29	1.44	-1.28	-1.55	
2,083.00	26.78	28.35	1,992.71	419.52	233.81	-155.20	1.63	1.63	0.05	
2,178.00	26.60	27.51	2,077.59	457.22	253.79	-168.14	0.44	-0.19	-0.88	
2,272.00	27.62	27.20	2,161.26	495.27	273.48	-180.71	1.10	1.09	-0.33	
2,367.00	25.63	25.39	2,246.18	533.42	292.35	-192.48	2.26	-2.09	-1.91	
2,461.00	25.85	22.88	2,330.86	570.67	309.04	-202.25	1.18	0.23	-2.67	
2,556.00	24.26	25.26	2,416.92	607.41	325.42	-211.82	1.98	-1.67	2.51	
2,650.00	23.86	22.53	2,502.76	642.43	340.95	-220.84	1.26	-0.43	-2.90	
2,745.00	24.48	23.50	2,589.43	678.23	356.16	-229.42	0.78	0.65	1.02	
2,839.00	24.57	25.52	2,674.95	713.73	372.34	-239.01	0.90	0.10	2.15	
2,934.00	24.70	21.69	2,761.31	750.00	388.19	-248.13	1.69	0.14	-4.03	
3,029.00	25.76	24.20	2,847.25	787.27	403.99	-257.03	1.59	1.12	2.64	
3,124.00	25.10	21.65	2,933.04	824.83	419.89	-265.97	1.35	-0.69	-2.68	
3,218.00	24.48	25.13	3,018.39	861.00	435.51	-274.89	1.69	-0.66	3.70	
3,312.00	23.29	23.10	3,104.34	895.72	451.08	-284.01	1.54	-1.27	-2.16	
3,407.00	23.33	20.55	3,191.58	930.61	465.05	-291.53	1.06	0.04	-2.68	
3,502.00	22.23	19.53	3,279.17	965.17	477.66	-297.77	1.23	-1.16	-1.07	
3,547.00	21.52	19.49	3,320.93	980.97	483.26	-300.46	1.58	-1.58	-0.09	
3,615.00	20.41	19.46	3,384.43	1,003.91	491.37	-304.35	1.63	-1.63	-0.04	
<b>SURFACE CSG - 3615' MD, 3384' TVD</b>										
3,763.00	17.99	19.40	3,524.19	1,049.80	507.56	-312.10	1.63	-1.63	-0.04	
3,857.00	19.05	25.44	3,613.33	1,077.35	518.98	-318.41	2.33	1.13	6.43	
3,952.00	19.84	30.42	3,702.91	1,105.25	533.80	-328.02	1.93	0.83	5.24	
4,046.00	22.14	30.42	3,790.67	1,134.29	550.85	-339.61	2.45	2.45	0.00	
4,140.00	24.44	31.69	3,877.01	1,166.11	570.03	-352.81	2.50	2.45	1.35	
4,235.00	26.96	29.18	3,962.60	1,201.64	590.86	-366.96	2.89	2.65	-2.64	
4,330.00	25.23	28.30	4,047.92	1,238.28	610.96	-380.20	1.87	-1.82	-0.93	
4,425.00	26.03	25.52	4,133.57	1,274.92	629.54	-391.95	1.52	0.84	-2.93	
4,519.00	26.65	28.74	4,217.82	1,312.02	648.57	-404.05	1.66	0.66	3.43	
4,614.00	27.00	27.29	4,302.59	1,349.86	668.70	-417.10	0.78	0.37	-1.53	
4,708.00	25.90	26.19	4,386.75	1,387.25	687.54	-428.97	1.28	-1.17	-1.17	

# Civitas Resources

## Survey Report

<b>Company:</b>	CRESTONE PEAK RESOURCES	<b>Local Co-ordinate Reference:</b>	Well STATE LA PLATA 5-65 13-14-15-16 1BH - AS BUILT
<b>Project:</b>	ARAPAHOE COUNTY	<b>TVD Reference:</b>	KB 25' @ 5923.00usft
<b>Site:</b>	SEC 13-T5S-R65W	<b>MD Reference:</b>	KB 25' @ 5923.00usft
<b>Well:</b>	STATE LA PLATA 5-65 13-14-15-16 1BH - AS BUILT	<b>North Reference:</b>	True
<b>Wellbore:</b>	OWB	<b>Survey Calculation Method:</b>	Minimum Curvature
<b>Design:</b>	FINAL	<b>Database:</b>	EDM

Survey										
Measured Depth (usft)	Inclination (°)	Azimuth (°)	Vertical Depth (usft)	+N/-S (usft)	+E/-W (usft)	Vertical Section (usft)	Dogleg Rate (°/100ft)	Build Rate (°/100ft)	Turn Rate (°/100ft)	
4,803.00	24.22	27.95	4,472.81	1,423.08	705.83	-440.58	1.93	-1.77	1.85	
4,897.00	24.97	28.12	4,558.28	1,457.61	724.22	-452.51	0.80	0.80	0.18	
4,992.00	25.94	27.73	4,644.06	1,493.69	743.34	-464.89	1.04	1.02	-0.41	
5,086.00	26.03	28.12	4,728.55	1,530.08	762.63	-477.37	0.21	0.10	0.41	
5,181.00	25.98	27.24	4,813.94	1,566.97	781.98	-489.83	0.41	-0.05	-0.93	
5,276.00	26.03	27.90	4,899.32	1,603.89	801.26	-502.21	0.31	0.05	0.69	
5,371.00	25.67	28.21	4,984.81	1,640.44	820.74	-514.85	0.40	-0.38	0.33	
5,465.00	26.16	26.14	5,069.36	1,676.99	839.49	-526.79	1.09	0.52	-2.20	
5,560.00	27.93	28.17	5,153.97	1,715.40	859.22	-539.35	2.10	1.86	2.14	
5,654.00	24.53	25.66	5,238.28	1,752.41	878.07	-551.29	3.80	-3.62	-2.67	
5,748.00	26.34	23.37	5,323.17	1,789.15	894.80	-561.19	2.19	1.93	-2.44	
5,843.00	27.49	27.11	5,407.88	1,828.01	913.15	-572.31	2.15	1.21	3.94	
5,937.00	28.68	33.19	5,490.83	1,866.21	935.39	-587.38	3.30	1.27	6.47	
6,032.00	30.40	33.19	5,573.48	1,905.41	961.03	-605.61	1.81	1.81	0.00	
6,126.00	30.45	33.72	5,654.54	1,945.12	987.27	-624.35	0.29	0.05	0.56	
6,221.00	28.37	34.07	5,737.29	1,983.84	1,013.28	-643.03	2.20	-2.19	0.37	
6,315.00	26.38	34.60	5,820.76	2,019.54	1,037.65	-660.64	2.13	-2.12	0.56	
6,410.00	23.20	35.62	5,906.99	2,052.13	1,060.54	-677.35	3.38	-3.35	1.07	
6,505.00	21.87	28.61	5,994.75	2,082.88	1,079.92	-690.93	3.15	-1.40	-7.38	
6,599.00	23.20	27.46	6,081.57	2,114.68	1,096.84	-701.90	1.49	1.41	-1.22	
6,694.00	24.44	28.12	6,168.48	2,148.62	1,114.73	-713.45	1.34	1.31	0.69	
6,788.00	23.77	27.42	6,254.28	2,182.59	1,132.62	-724.99	0.77	-0.71	-0.74	
6,883.00	25.23	22.88	6,340.73	2,218.24	1,149.31	-735.05	2.51	1.54	-4.78	
6,978.00	27.66	25.35	6,425.79	2,256.83	1,166.63	-745.21	2.81	2.56	2.60	
7,073.00	28.90	27.90	6,509.45	2,297.05	1,186.81	-757.89	1.82	1.31	2.68	
7,086.00	28.53	27.99	6,520.85	2,302.56	1,189.74	-759.79	2.89	-2.87	0.66	
<b>KOP - 7086' MD, 6521' TVD</b>										
7,167.00	26.20	28.57	6,592.79	2,335.35	1,207.37	-771.28	2.89	-2.87	0.72	
7,262.00	25.41	30.33	6,678.31	2,371.36	1,227.69	-784.85	1.16	-0.83	1.85	
7,357.00	26.03	31.74	6,763.90	2,406.68	1,248.95	-799.47	0.92	0.65	1.48	
7,452.00	25.98	27.24	6,849.29	2,442.91	1,269.44	-813.17	2.08	-0.05	-4.74	
7,546.00	25.90	25.22	6,933.82	2,479.79	1,287.61	-824.47	0.94	-0.09	-2.15	
7,641.00	24.92	25.97	7,019.63	2,516.56	1,305.22	-835.23	1.09	-1.03	0.79	
7,735.00	24.26	24.42	7,105.11	2,551.95	1,321.87	-845.30	0.98	-0.70	-1.65	
7,830.00	21.30	23.32	7,192.69	2,585.57	1,336.78	-853.97	3.15	-3.12	-1.16	
7,924.00	16.53	359.03	7,281.72	2,614.68	1,343.32	-855.21	9.69	-5.07	-25.84	
8,018.00	16.84	326.81	7,371.96	2,639.50	1,335.62	-843.21	9.73	0.33	-34.28	
8,113.00	21.70	317.91	7,461.63	2,664.07	1,316.30	-819.82	5.96	5.12	-9.37	
8,208.00	29.87	312.89	7,547.11	2,693.25	1,287.15	-785.92	8.89	8.60	-5.28	
8,302.00	39.42	308.88	7,624.36	2,728.00	1,246.66	-739.89	10.44	10.16	-4.27	
8,397.00	47.68	301.25	7,693.20	2,765.25	1,193.03	-680.47	10.29	8.69	-8.03	
8,492.00	53.29	291.25	7,753.71	2,797.34	1,127.36	-610.12	10.03	5.91	-10.53	

# Civitas Resources

## Survey Report

<b>Company:</b>	CRESTONE PEAK RESOURCES	<b>Local Co-ordinate Reference:</b>	Well STATE LA PLATA 5-65 13-14-15-16 1BH - AS BUILT
<b>Project:</b>	ARAPAHOE COUNTY	<b>TVD Reference:</b>	KB 25' @ 5923.00usft
<b>Site:</b>	SEC 13-T5S-R65W	<b>MD Reference:</b>	KB 25' @ 5923.00usft
<b>Well:</b>	STATE LA PLATA 5-65 13-14-15-16 1BH - AS BUILT	<b>North Reference:</b>	True
<b>Wellbore:</b>	OWB	<b>Survey Calculation Method:</b>	Minimum Curvature
<b>Design:</b>	FINAL	<b>Database:</b>	EDM

Survey										
Measured Depth (usft)	Inclination (°)	Azimuth (°)	Vertical Depth (usft)	+N/-S (usft)	+E/-W (usft)	Vertical Section (usft)	Dogleg Rate (°/100ft)	Build Rate (°/100ft)	Turn Rate (°/100ft)	
8,587.00	59.66	281.38	7,806.25	2,819.29	1,051.47	-531.54	10.94	6.71	-10.39	
8,681.00	67.04	277.55	7,848.39	2,833.01	968.67	-447.61	8.65	7.85	-4.07	
8,776.00	70.70	274.06	7,882.64	2,841.93	880.54	-359.31	5.16	3.85	-3.67	
8,871.00	80.65	271.51	7,906.12	2,846.35	788.72	-268.18	10.79	10.47	-2.68	
8,884.65	81.22	271.37	7,908.27	2,846.69	775.25	-254.86	4.29	4.18	-1.00	
<b>-2473' X-OVER PNT - 8884.65' MD, 7908' TVD, 936' FNL, 2473' FWL SEC 13</b>										
8,965.00	84.58	270.58	7,918.20	2,848.05	695.54	-176.18	4.29	4.18	-0.99	
9,015.00	86.91	270.63	7,921.91	2,848.57	645.68	-127.03	4.65	4.65	0.09	
<b>HZ LANDING PNT - 9015' MD, 7922' TVD</b>										
9,060.00	89.00	270.67	7,923.52	2,849.08	600.71	-82.70	4.65	4.65	0.09	
9,155.00	88.86	270.01	7,925.29	2,849.65	505.73	10.86	0.71	-0.15	-0.69	
9,249.00	89.53	271.24	7,926.61	2,850.67	411.75	103.52	1.49	0.71	1.31	
9,344.00	89.79	270.94	7,927.18	2,852.48	316.77	197.30	0.42	0.27	-0.32	
9,438.00	89.48	270.94	7,927.78	2,854.02	222.78	290.05	0.33	-0.33	0.00	
9,533.00	87.85	269.83	7,929.99	2,854.66	127.82	383.61	2.08	-1.72	-1.17	
9,628.00	89.84	272.39	7,931.91	2,856.50	32.87	477.36	3.41	2.09	2.69	
9,723.00	89.75	272.21	7,932.25	2,860.31	-62.06	571.44	0.21	-0.09	-0.19	
9,817.00	89.48	272.08	7,932.88	2,863.83	-155.99	664.49	0.32	-0.29	-0.14	
9,912.00	89.53	271.91	7,933.70	2,867.14	-250.93	758.50	0.19	0.05	-0.18	
10,006.00	90.32	273.14	7,933.82	2,871.28	-344.83	851.64	1.56	0.84	1.31	
10,101.00	89.62	271.69	7,933.87	2,875.28	-439.75	945.74	1.69	-0.74	-1.53	
10,290.00	89.35	270.89	7,935.57	2,879.54	-628.69	1,132.41	0.45	-0.14	-0.42	
10,384.00	89.13	271.33	7,936.82	2,881.36	-722.66	1,225.20	0.52	-0.23	0.47	
10,479.00	88.20	270.19	7,939.03	2,882.62	-817.62	1,318.86	1.55	-0.98	-1.20	
10,574.00	88.33	269.48	7,941.91	2,882.34	-912.58	1,412.25	0.76	0.14	-0.75	
10,668.00	90.77	269.92	7,942.64	2,881.85	-1,006.57	1,504.64	2.64	2.60	0.47	
10,763.00	91.16	270.05	7,941.04	2,881.83	-1,101.56	1,598.10	0.43	0.41	0.14	
10,857.00	91.74	270.23	7,938.67	2,882.06	-1,195.52	1,690.60	0.65	0.62	0.19	
10,952.00	90.41	270.98	7,936.88	2,883.06	-1,290.50	1,784.23	1.61	-1.40	0.79	
11,046.00	90.46	270.41	7,936.17	2,884.20	-1,384.49	1,876.91	0.61	0.05	-0.61	
11,140.00	88.03	271.02	7,937.41	2,885.37	-1,478.47	1,969.59	2.67	-2.59	0.65	
11,235.00	88.07	271.38	7,940.64	2,887.36	-1,573.39	2,063.35	0.38	0.04	0.38	
11,330.00	87.98	271.55	7,943.91	2,889.79	-1,668.30	2,157.17	0.20	-0.09	0.18	
11,424.00	89.13	270.50	7,946.29	2,891.47	-1,762.26	2,249.91	1.66	1.22	-1.12	
11,613.00	90.15	270.76	7,947.47	2,893.55	-1,951.24	2,436.23	0.56	0.54	0.14	
11,708.00	90.54	270.10	7,946.90	2,894.26	-2,046.23	2,529.83	0.81	0.41	-0.69	
11,803.00	91.03	270.58	7,945.60	2,894.82	-2,141.22	2,623.40	0.72	0.52	0.51	
11,897.00	88.78	270.23	7,945.75	2,895.49	-2,235.21	2,716.00	2.42	-2.39	-0.37	
11,992.00	88.47	269.35	7,948.03	2,895.14	-2,330.18	2,809.38	0.98	-0.33	-0.93	
12,086.00	87.67	269.79	7,951.20	2,894.43	-2,424.13	2,901.69	0.97	-0.85	0.47	
12,181.00	86.83	269.48	7,955.76	2,893.83	-2,519.01	2,994.95	0.94	-0.88	-0.33	
12,276.00	87.01	268.34	7,960.86	2,892.03	-2,613.86	3,087.95	1.21	0.19	-1.20	

# Civitas Resources

## Survey Report

<b>Company:</b>	CRESTONE PEAK RESOURCES	<b>Local Co-ordinate Reference:</b>	Well STATE LA PLATA 5-65 13-14-15-16 1BH - AS BUILT
<b>Project:</b>	ARAPAHOE COUNTY	<b>TVD Reference:</b>	KB 25' @ 5923.00usft
<b>Site:</b>	SEC 13-T5S-R65W	<b>MD Reference:</b>	KB 25' @ 5923.00usft
<b>Well:</b>	STATE LA PLATA 5-65 13-14-15-16 1BH - AS BUILT	<b>North Reference:</b>	True
<b>Wellbore:</b>	OWB	<b>Survey Calculation Method:</b>	Minimum Curvature
<b>Design:</b>	FINAL	<b>Database:</b>	EDM

Survey										
Measured Depth (usft)	Inclination (°)	Azimuth (°)	Vertical Depth (usft)	+N/-S (usft)	+E/-W (usft)	Vertical Section (usft)	Dogleg Rate (°/100ft)	Build Rate (°/100ft)	Turn Rate (°/100ft)	
12,370.00	88.25	269.53	7,964.75	2,890.28	-2,707.76	3,180.03	1.83	1.32	1.27	
12,465.00	89.75	269.57	7,966.41	2,889.53	-2,802.74	3,273.35	1.58	1.58	0.04	
12,560.00	89.35	268.69	7,967.15	2,888.09	-2,897.72	3,366.56	1.02	-0.42	-0.93	
12,654.00	88.78	269.17	7,968.69	2,886.34	-2,991.69	3,458.71	0.79	-0.61	0.51	
12,749.00	87.89	269.75	7,971.45	2,885.44	-3,086.65	3,551.98	1.12	-0.94	0.61	
12,842.00	88.82	268.95	7,974.12	2,884.39	-3,179.60	3,643.25	1.32	1.00	-0.86	
12,937.00	87.85	267.68	7,976.88	2,881.60	-3,274.52	3,736.14	1.68	-1.02	-1.34	
13,031.00	89.57	269.92	7,978.99	2,879.63	-3,368.46	3,828.23	3.00	1.83	2.38	
13,126.00	89.17	270.67	7,980.04	2,880.12	-3,463.46	3,921.79	0.89	-0.42	0.79	
13,220.00	90.41	270.01	7,980.38	2,880.67	-3,557.45	4,014.37	1.49	1.32	-0.70	
13,315.00	90.41	269.17	7,979.70	2,880.00	-3,652.45	4,107.72	0.88	0.00	-0.88	
13,409.00	89.84	269.44	7,979.50	2,878.85	-3,746.44	4,200.00	0.67	-0.61	0.29	
13,504.00	89.04	268.47	7,980.43	2,877.12	-3,841.42	4,293.15	1.32	-0.84	-1.02	
13,598.00	88.73	270.85	7,982.26	2,876.56	-3,935.39	4,385.51	2.55	-0.33	2.53	
13,692.00	88.03	269.83	7,984.91	2,877.12	-4,029.35	4,478.06	1.32	-0.74	-1.09	
13,787.00	88.86	270.89	7,987.49	2,877.72	-4,124.31	4,571.61	1.42	0.87	1.12	
13,882.00	88.78	270.63	7,989.45	2,878.98	-4,219.28	4,665.28	0.29	-0.08	-0.27	
13,976.00	90.85	271.51	7,989.75	2,880.73	-4,313.26	4,758.06	2.39	2.20	0.94	
14,070.00	90.54	270.50	7,988.61	2,882.38	-4,407.23	4,850.82	1.12	-0.33	-1.07	
14,165.00	90.46	269.92	7,987.78	2,882.73	-4,502.23	4,944.36	0.62	-0.08	-0.61	
14,259.00	90.06	270.67	7,987.36	2,883.22	-4,596.23	5,036.93	0.90	-0.43	0.80	
14,353.00	90.01	269.26	7,987.30	2,883.16	-4,690.22	5,129.41	1.50	-0.05	-1.50	
14,447.00	90.10	269.09	7,987.21	2,881.80	-4,784.21	5,221.65	0.20	0.10	-0.18	
14,542.00	90.32	269.83	7,986.86	2,880.91	-4,879.21	5,314.96	0.81	0.23	0.78	
14,637.00	90.41	269.83	7,986.26	2,880.63	-4,974.21	5,408.38	0.09	0.09	0.00	
14,731.00	90.77	269.75	7,985.29	2,880.28	-5,068.20	5,500.81	0.39	0.38	-0.09	
14,825.00	90.59	268.34	7,984.17	2,878.72	-5,162.18	5,593.00	1.51	-0.19	-1.50	
14,920.00	90.41	268.25	7,983.34	2,875.89	-5,257.13	5,685.92	0.21	-0.19	-0.09	
15,015.00	88.86	269.53	7,983.95	2,874.05	-5,352.11	5,779.05	2.12	-1.63	1.35	
15,122.00	88.33	269.79	7,986.57	2,873.41	-5,459.07	5,884.18	0.55	-0.50	0.24	
15,216.00	88.29	269.70	7,989.34	2,873.00	-5,553.03	5,976.56	0.10	-0.04	-0.10	
15,311.00	87.63	269.44	7,992.73	2,872.28	-5,647.97	6,069.84	0.75	-0.69	-0.27	
15,405.00	89.57	270.50	7,995.02	2,872.23	-5,741.93	6,162.29	2.35	2.06	1.13	
15,500.00	90.10	270.14	7,995.30	2,872.77	-5,836.93	6,255.86	0.67	0.56	-0.38	
15,594.00	90.54	270.41	7,994.77	2,873.22	-5,930.93	6,348.43	0.55	0.47	0.29	
15,689.00	91.12	270.63	7,993.39	2,874.08	-6,025.92	6,442.05	0.65	0.61	0.23	
15,783.00	91.56	270.50	7,991.20	2,875.01	-6,119.88	6,534.67	0.49	0.47	-0.14	
15,878.00	89.93	271.29	7,989.96	2,876.49	-6,214.86	6,628.39	1.91	-1.72	0.83	
15,972.00	89.84	271.46	7,990.15	2,878.74	-6,308.83	6,721.26	0.20	-0.10	0.18	
16,067.00	89.70	271.29	7,990.53	2,881.02	-6,403.81	6,815.11	0.23	-0.15	-0.18	
16,162.00	89.97	271.73	7,990.80	2,883.53	-6,498.77	6,909.00	0.54	0.28	0.46	
16,256.00	88.03	271.33	7,992.45	2,886.04	-6,592.72	7,001.89	2.11	-2.06	-0.43	
16,350.00	87.32	271.64	7,996.26	2,888.47	-6,686.61	7,094.71	0.82	-0.76	0.33	

# Civitas Resources

## Survey Report

<b>Company:</b>	CRESTONE PEAK RESOURCES	<b>Local Co-ordinate Reference:</b>	Well STATE LA PLATA 5-65 13-14-15-16 1BH - AS BUILT
<b>Project:</b>	ARAPAHOE COUNTY	<b>TVD Reference:</b>	KB 25' @ 5923.00usft
<b>Site:</b>	SEC 13-T5S-R65W	<b>MD Reference:</b>	KB 25' @ 5923.00usft
<b>Well:</b>	STATE LA PLATA 5-65 13-14-15-16 1BH - AS BUILT	<b>North Reference:</b>	True
<b>Wellbore:</b>	OWB	<b>Survey Calculation Method:</b>	Minimum Curvature
<b>Design:</b>	FINAL	<b>Database:</b>	EDM

Survey										
Measured Depth (usft)	Inclination (°)	Azimuth (°)	Vertical Depth (usft)	+N/-S (usft)	+E/-W (usft)	Vertical Section (usft)	Dogleg Rate (°/100ft)	Build Rate (°/100ft)	Turn Rate (°/100ft)	
16,445.00	88.25	270.80	7,999.93	2,890.49	-6,781.52	7,188.45	1.32	0.98	-0.88	
16,539.00	87.27	269.97	8,003.60	2,891.12	-6,875.44	7,280.98	1.37	-1.04	-0.88	
16,634.00	88.56	268.86	8,007.06	2,890.15	-6,970.37	7,374.21	1.79	1.36	-1.17	
16,729.00	88.20	269.00	8,009.75	2,888.38	-7,065.31	7,467.32	0.41	-0.38	0.15	
16,823.00	88.03	268.86	8,012.84	2,886.63	-7,159.25	7,559.43	0.23	-0.18	-0.15	
16,918.00	87.76	268.95	8,016.33	2,884.81	-7,254.16	7,652.50	0.30	-0.28	0.09	
17,012.00	89.62	269.48	8,018.48	2,883.52	-7,348.13	7,744.72	2.06	1.98	0.56	
17,107.00	89.35	269.26	8,019.33	2,882.48	-7,443.12	7,838.00	0.37	-0.28	-0.23	
17,202.00	89.35	269.39	8,020.41	2,881.36	-7,538.10	7,931.27	0.14	0.00	0.14	
17,295.00	89.00	269.04	8,021.75	2,880.09	-7,631.09	8,022.53	0.53	-0.38	-0.38	
17,390.00	88.64	268.78	8,023.70	2,878.28	-7,726.05	8,115.64	0.47	-0.38	-0.27	
17,485.00	90.54	270.01	8,024.38	2,877.28	-7,821.03	8,208.93	2.38	2.00	1.29	
17,579.00	90.15	269.39	8,023.82	2,876.79	-7,915.03	8,301.33	0.78	-0.41	-0.66	
17,674.00	90.01	269.44	8,023.68	2,875.82	-8,010.03	8,394.62	0.16	-0.15	0.05	
17,768.00	89.84	269.44	8,023.81	2,874.90	-8,104.02	8,486.95	0.18	-0.18	0.00	
17,863.00	90.01	269.75	8,023.93	2,874.23	-8,199.02	8,580.30	0.37	0.18	0.33	
17,957.00	89.40	270.05	8,024.42	2,874.06	-8,293.02	8,672.76	0.72	-0.65	0.32	
18,052.00	87.94	269.97	8,026.62	2,874.08	-8,387.99	8,766.21	1.54	-1.54	-0.08	
18,147.00	89.70	270.01	8,028.58	2,874.06	-8,482.96	8,859.66	1.85	1.85	0.04	
18,242.00	89.53	270.23	8,029.22	2,874.26	-8,577.96	8,953.17	0.29	-0.18	0.23	
18,336.00	89.00	269.92	8,030.42	2,874.38	-8,671.95	9,045.67	0.65	-0.56	-0.33	
18,430.00	89.00	269.97	8,032.06	2,874.29	-8,765.94	9,138.14	0.05	0.00	0.05	
18,525.00	88.91	270.45	8,033.79	2,874.64	-8,860.92	9,231.66	0.51	-0.09	0.51	
18,619.00	90.94	269.79	8,033.92	2,874.84	-8,954.92	9,324.18	2.27	2.16	-0.70	
18,714.00	90.72	269.31	8,032.54	2,874.09	-9,049.90	9,417.51	0.56	-0.23	-0.51	
18,808.00	90.81	269.61	8,031.29	2,873.21	-9,143.89	9,509.83	0.33	0.10	0.32	
18,902.00	90.63	269.31	8,030.11	2,872.32	-9,237.88	9,602.15	0.37	-0.19	-0.32	
18,997.00	90.81	269.39	8,028.91	2,871.24	-9,332.87	9,695.42	0.21	0.19	0.08	
19,091.00	90.50	268.86	8,027.84	2,869.81	-9,426.85	9,787.64	0.65	-0.33	-0.56	
19,186.00	90.72	269.26	8,026.83	2,868.25	-9,521.83	9,880.82	0.48	0.23	0.42	
19,280.00	90.54	269.00	8,025.79	2,866.82	-9,615.81	9,973.04	0.34	-0.19	-0.28	
19,375.00	91.25	270.94	8,024.31	2,866.77	-9,710.80	10,066.49	2.17	0.75	2.04	
19,469.00	91.65	270.98	8,021.93	2,868.35	-9,804.75	10,159.22	0.43	0.43	0.04	
19,564.00	89.66	272.08	8,020.84	2,870.88	-9,899.71	10,253.10	2.39	-2.09	1.16	
19,658.00	89.57	272.48	8,021.48	2,874.62	-9,993.63	10,346.18	0.44	-0.10	0.43	
19,752.00	89.48	272.70	8,022.25	2,878.87	-10,087.53	10,439.33	0.25	-0.10	0.23	
19,846.00	88.82	272.26	8,023.65	2,882.94	-10,181.43	10,532.45	0.84	-0.70	-0.47	
19,940.00	88.51	272.79	8,025.84	2,887.08	-10,275.31	10,625.57	0.65	-0.33	0.56	
20,034.00	88.03	272.83	8,028.68	2,891.68	-10,369.16	10,718.73	0.51	-0.51	0.04	
20,128.00	88.38	272.35	8,031.62	2,895.93	-10,463.02	10,811.84	0.63	0.37	-0.51	
20,222.00	88.11	271.86	8,034.50	2,899.38	-10,556.91	10,904.84	0.59	-0.29	-0.52	
20,316.00	87.89	272.04	8,037.78	2,902.58	-10,650.80	10,997.79	0.30	-0.23	0.19	

# Civitas Resources

## Survey Report

<b>Company:</b>	CRESTONE PEAK RESOURCES	<b>Local Co-ordinate Reference:</b>	Well STATE LA PLATA 5-65 13-14-15-16 1BH - AS BUILT
<b>Project:</b>	ARAPAHOE COUNTY	<b>TVD Reference:</b>	KB 25' @ 5923.00usft
<b>Site:</b>	SEC 13-T5S-R65W	<b>MD Reference:</b>	KB 25' @ 5923.00usft
<b>Well:</b>	STATE LA PLATA 5-65 13-14-15-16 1BH - AS BUILT	<b>North Reference:</b>	True
<b>Wellbore:</b>	OWB	<b>Survey Calculation Method:</b>	Minimum Curvature
<b>Design:</b>	FINAL	<b>Database:</b>	EDM

Survey										
Measured Depth (usft)	Inclination (°)	Azimuth (°)	Vertical Depth (usft)	+N/-S (usft)	+E/-W (usft)	Vertical Section (usft)	Dogleg Rate (°/100ft)	Build Rate (°/100ft)	Turn Rate (°/100ft)	
20,411.00	88.07	269.79	8,041.13	2,904.09	-10,745.72	11,091.46	2.37	0.19	-2.37	
20,505.00	89.88	268.78	8,042.81	2,902.92	-10,839.69	11,183.71	2.20	1.93	-1.07	
20,599.00	89.17	268.69	8,043.59	2,900.84	-10,933.66	11,275.81	0.76	-0.76	-0.10	
20,693.00	87.94	268.91	8,045.96	2,898.88	-11,027.61	11,367.90	1.33	-1.31	0.23	
20,788.00	88.95	269.83	8,048.54	2,897.83	-11,122.57	11,461.15	1.44	1.06	0.97	
20,882.00	90.23	270.05	8,049.21	2,897.73	-11,216.56	11,553.61	1.38	1.36	0.23	
20,976.00	89.44	269.83	8,049.48	2,897.63	-11,310.56	11,646.09	0.87	-0.84	-0.23	
21,070.00	90.15	269.79	8,049.82	2,897.32	-11,404.56	11,738.52	0.76	0.76	-0.04	
21,164.00	89.09	269.53	8,050.44	2,896.77	-11,498.56	11,830.91	1.16	-1.13	-0.28	
21,259.00	90.72	270.05	8,050.60	2,896.42	-11,593.55	11,924.32	1.80	1.72	0.55	
21,352.00	90.28	270.36	8,049.79	2,896.75	-11,686.55	12,015.88	0.58	-0.47	0.33	
21,446.00	89.57	269.70	8,049.91	2,896.80	-11,780.55	12,108.38	1.03	-0.76	-0.70	
21,541.00	90.32	270.45	8,050.00	2,896.92	-11,875.54	12,201.88	1.12	0.79	0.79	
21,635.00	90.99	271.29	8,048.93	2,898.35	-11,969.53	12,294.60	1.14	0.71	0.89	
21,729.00	89.17	269.04	8,048.80	2,898.62	-12,063.52	12,387.13	3.08	-1.94	-2.39	
21,823.00	89.09	269.39	8,050.22	2,897.33	-12,157.50	12,479.37	0.38	-0.09	0.37	
21,917.00	88.33	268.86	8,052.34	2,895.90	-12,251.46	12,571.57	0.99	-0.81	-0.56	
22,012.00	87.89	269.22	8,055.47	2,894.31	-12,346.39	12,664.70	0.60	-0.46	0.38	
22,105.00	89.22	270.14	8,057.82	2,893.79	-12,439.36	12,756.08	1.74	1.43	0.99	
22,199.00	89.13	270.45	8,059.17	2,894.27	-12,533.35	12,848.65	0.34	-0.10	0.33	
22,293.00	88.29	270.54	8,061.29	2,895.08	-12,627.32	12,941.26	0.90	-0.89	0.10	
22,387.00	89.79	270.76	8,062.86	2,896.15	-12,721.30	13,033.92	1.61	1.60	0.23	
22,481.00	89.66	271.07	8,063.31	2,897.65	-12,815.29	13,126.67	0.36	-0.14	0.33	
22,575.00	89.00	270.89	8,064.41	2,899.26	-12,909.27	13,219.42	0.73	-0.70	-0.19	
22,670.00	89.93	270.19	8,065.30	2,900.15	-13,004.26	13,313.05	1.23	0.98	-0.74	
22,764.00	89.79	270.50	8,065.53	2,900.72	-13,098.25	13,405.64	0.36	-0.15	0.33	
22,858.00	89.44	270.50	8,066.16	2,901.54	-13,192.25	13,498.27	0.37	-0.37	0.00	
22,953.00	89.31	271.51	8,067.20	2,903.21	-13,287.23	13,592.02	1.07	-0.14	1.06	
23,047.00	88.73	271.55	8,068.81	2,905.72	-13,381.18	13,684.91	0.62	-0.62	0.04	
23,141.00	89.35	269.92	8,070.38	2,906.92	-13,475.15	13,777.60	1.86	0.66	-1.73	
23,235.00	88.47	268.91	8,072.17	2,905.96	-13,569.13	13,869.89	1.42	-0.94	-1.07	
23,330.00	90.90	270.41	8,072.69	2,905.40	-13,664.12	13,963.26	3.01	2.56	1.58	
23,424.00	90.81	269.88	8,071.29	2,905.64	-13,758.11	14,055.78	0.57	-0.10	-0.56	
23,518.00	90.81	269.57	8,069.96	2,905.19	-13,852.10	14,148.18	0.33	0.00	-0.33	
23,612.00	90.81	269.26	8,068.63	2,904.23	-13,946.08	14,240.49	0.33	0.00	-0.33	
23,706.00	90.63	268.78	8,067.45	2,902.62	-14,040.06	14,332.67	0.55	-0.19	-0.51	
23,800.00	90.59	268.51	8,066.45	2,900.40	-14,134.03	14,424.73	0.29	-0.04	-0.29	
23,894.00	90.37	267.98	8,065.66	2,897.52	-14,227.98	14,516.66	0.61	-0.23	-0.56	
23,988.00	90.99	269.48	8,064.55	2,895.43	-14,321.95	14,608.75	1.73	0.66	1.60	
24,082.00	91.16	269.39	8,062.78	2,894.51	-14,415.93	14,701.06	0.20	0.18	-0.10	
24,176.00	91.16	269.13	8,060.88	2,893.29	-14,509.90	14,793.30	0.28	0.00	-0.28	
24,271.00	90.90	269.00	8,059.17	2,891.74	-14,604.87	14,886.48	0.31	-0.27	-0.14	
24,365.00	88.69	270.05	8,059.51	2,890.96	-14,698.86	14,978.82	2.60	-2.35	1.12	

# Civitas Resources

## Survey Report

<b>Company:</b>	CRESTONE PEAK RESOURCES	<b>Local Co-ordinate Reference:</b>	Well STATE LA PLATA 5-65 13-14-15-16 1BH - AS BUILT
<b>Project:</b>	ARAPAHOE COUNTY	<b>TVD Reference:</b>	KB 25' @ 5923.00usft
<b>Site:</b>	SEC 13-T5S-R65W	<b>MD Reference:</b>	KB 25' @ 5923.00usft
<b>Well:</b>	STATE LA PLATA 5-65 13-14-15-16 1BH - AS BUILT	<b>North Reference:</b>	True
<b>Wellbore:</b>	OWB	<b>Survey Calculation Method:</b>	Minimum Curvature
<b>Design:</b>	FINAL	<b>Database:</b>	EDM

Survey										
Measured Depth (usft)	Inclination (°)	Azimuth (°)	Vertical Depth (usft)	+N/-S (usft)	+E/-W (usft)	Vertical Section (usft)	Dogleg Rate (°/100ft)	Build Rate (°/100ft)	Turn Rate (°/100ft)	
24,458.00	88.51	269.97	8,061.78	2,890.98	-14,791.83	15,070.30	0.21	-0.19	-0.09	
24,552.00	87.98	269.75	8,064.66	2,890.75	-14,885.79	15,162.71	0.61	-0.56	-0.23	
24,646.00	87.45	269.44	8,068.41	2,890.09	-14,979.71	15,255.00	0.65	-0.56	-0.33	
24,740.00	89.26	269.04	8,071.10	2,888.84	-15,073.66	15,347.22	1.97	1.93	-0.43	
24,834.00	89.09	269.61	8,072.46	2,887.73	-15,167.64	15,439.50	0.63	-0.18	0.61	
24,928.00	88.82	269.57	8,074.17	2,887.06	-15,261.62	15,531.85	0.29	-0.29	-0.04	
25,022.00	88.25	269.31	8,076.58	2,886.14	-15,355.59	15,624.15	0.67	-0.61	-0.28	
25,115.00	90.01	270.72	8,077.99	2,886.17	-15,448.57	15,715.64	2.42	1.89	1.52	
25,209.00	89.84	271.07	8,078.11	2,887.64	-15,542.56	15,808.38	0.41	-0.18	0.37	
25,303.00	89.40	271.29	8,078.73	2,889.57	-15,636.54	15,901.20	0.52	-0.47	0.23	
25,396.00	88.69	271.07	8,080.28	2,891.49	-15,729.50	15,993.01	0.80	-0.76	-0.24	
25,490.00	87.63	270.32	8,083.30	2,892.63	-15,823.45	16,085.65	1.38	-1.13	-0.80	
25,552.00	87.19	270.45	8,086.10	2,893.04	-15,885.38	16,146.67	0.74	-0.71	0.21	
<b>LAST SURVEY - 25552' MD, 8086' TVD</b>										
25,623.00	87.19	270.45	8,089.58	2,893.60	-15,956.29	16,216.54	0.00	0.00	0.00	
<b>PTB - 25623' MD, 8090' TVD, 921' FNL, 1651' FWL SEC 16</b>										

Design Targets										
Target Name	Dip Angle (°)	Dip Dir. (°)	TVD (usft)	+N/-S (usft)	+E/-W (usft)	Northing (usft)	Easting (usft)	Latitude	Longitude	
LP-ST. LA PLATA 1BH (I - hit/miss target - Shape - Point	0.00	0.00	7,925.00	2,832.88	775.25	1,652,387.87	3,249,607.75	39.621255°N	104.613904°W	
- actual wellpath misses target center by 21.58usft at 8886.48usft MD (7908.55 TVD, 2846.73 N, 773.44 E)										
PBHL-ST. LA PLATA 1B - actual wellpath misses target center by 30.64usft at 25623.00usft MD (8089.58 TVD, 2893.60 N, -15956.29 E) - Point	0.00	0.00	8,100.00	2,864.80	-15,957.45	1,652,257.09	3,232,875.93	39.621329°N	104.673302°W	

Design Annotations					
Measured Depth (usft)	Vertical Depth (usft)	Local Coordinates		Comment	
		+N/-S (usft)	+E/-W (usft)		
3,615.00	3,384.43	1,003.91	491.37	SURFACE CSG - 3615' MD, 3384' TVD	
7,086.00	6,520.85	2,302.56	1,189.74	KOP - 7086' MD, 6521' TVD	
8,884.65	7,908.27	2,846.69	775.25	~2473' X-OVER PNT - 8884.65' MD, 7908' TVD, 936' FNL, 2473' FWL SEC 13	
9,015.00	7,921.91	2,848.57	645.68	HZ LANDING PNT - 9015' MD, 7922' TVD	
25,552.00	8,086.10	2,893.04	-15,885.38	LAST SURVEY - 25552' MD, 8086' TVD	
25,623.00	8,089.58	2,893.60	-15,956.29	PTB - 25623' MD, 8090' TVD, 921' FNL, 1651' FWL SEC 16	

Checked By: _____	Approved By: _____	Date: _____
-------------------	--------------------	-------------