

CRESTONE PEAK RESOURCES

ARAPAHOE COUNTY

SEC 13-T5S-R65W

STATE HURON 5-65 13-18-17 1AH - AS BUILT

OWB

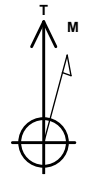
Design: FINAL

Standard Survey Report

13 December, 2025

Project: ARAPAHOE COUNTY
 Site: SEC 13-T5S-R65W
 Well: STATE HURON 5-65 13-18-17 1AH - AS BUILT
 Wellbore: OWB
 Design: FINAL

PROJECT DETAILS: ARAPAHOE COUNTY
 Geodetic System: US State Plane 1983
 Datum: North American Datum 1983
 Ellipsoid: GRS 1980
 Zone: Colorado Central Zone
 System Datum: Mean Sea Level



Azimuths to True North
 Magnetic North: 7.22°
 Magnetic Field
 Strength: 51074.6nT
 Dip Angle: 65.86°
 Date: 12/8/2025
 Model: IGRF2020

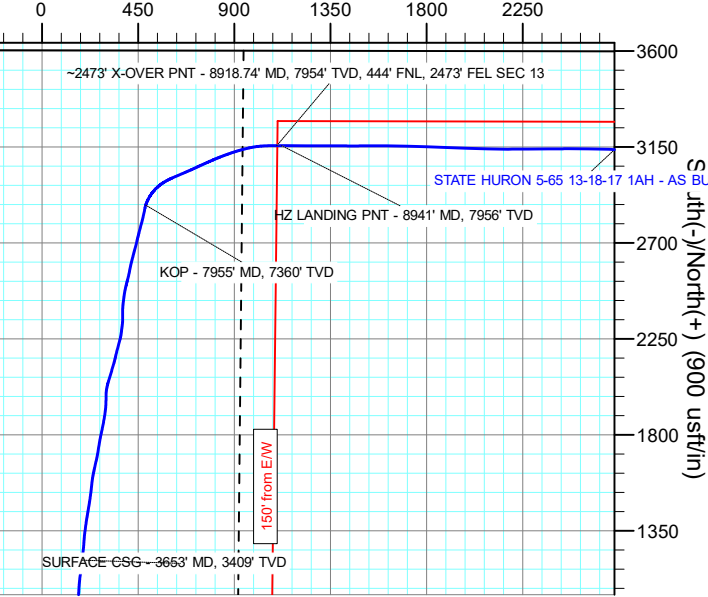
WELL DETAILS: STATE HURON 5-65 13-18-17 1AH - AS BUILT

		5892.00			Slot
+N/-S	+E/-W	Northing	Easting	Latitude	Longitude
0.00	0.00	1649728.32	3248859.75	39.613974°N	104.616651°W

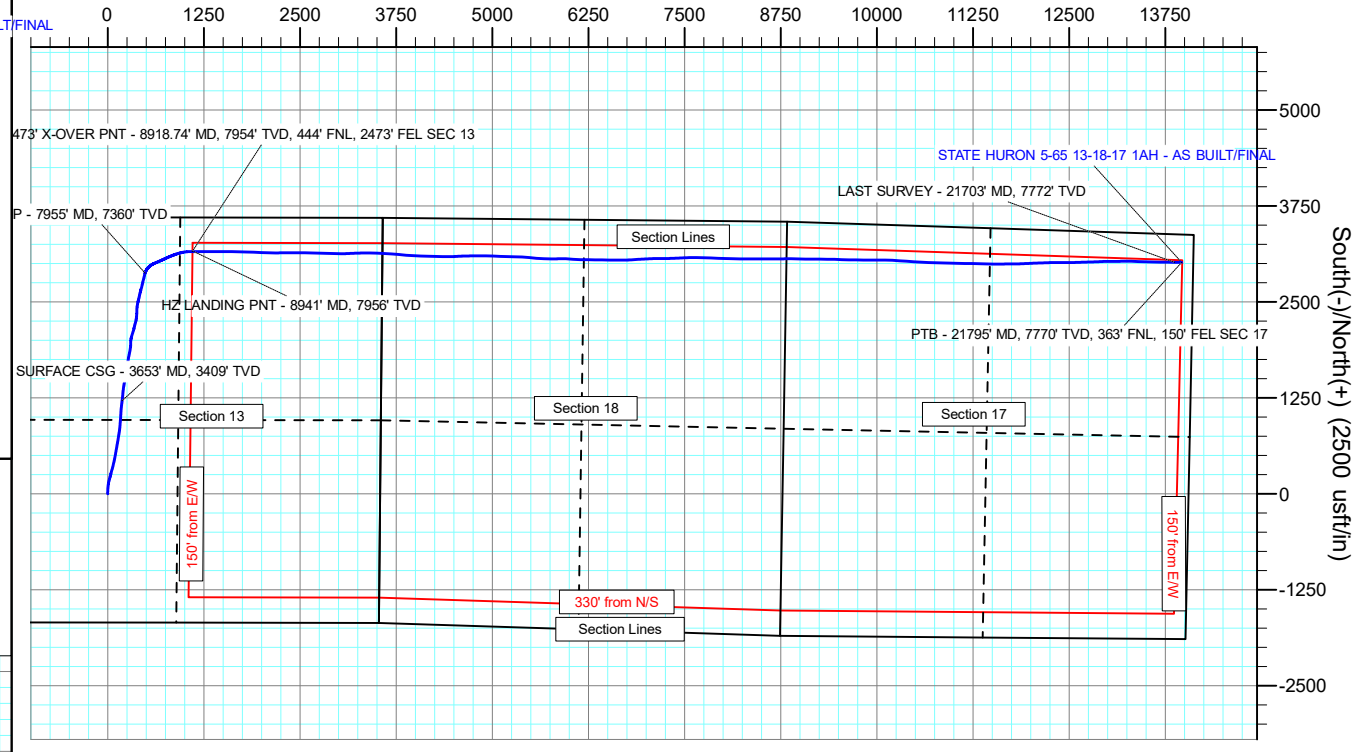
ANNOTATIONS

MD	Inc	Azi	TVD	+N/-S	+E/-W	VSec	Departure	Annotation
3653.00	20.91	6.83	3409.12	1212.63	187.30	439.12	1230.14	SURFACE CSG - 3653' MD, 3409' TVD
7955.00	26.75	17.32	7360.44	2877.32	485.40	1081.98	2927.44	KOP - 7955' MD, 7360' TVD
8918.74	83.39	89.76	7953.89	3156.81	1099.19	1740.94	3628.68	~2473' X-OVER PNT - 8918.74' MD, 7954' TVD, 444' FNL, 2473' FEL SEC 13
8941.00	84.91	90.65	7956.16	3156.73	1121.33	1762.57	3650.77	HZ LANDING PNT - 8941' MD, 7956' TVD
21703.00	91.74	90.48	7772.34	3016.92	13871.06	14195.34	16408.02	LAST SURVEY - 21703' MD, 7772' TVD
21795.00	91.74	90.48	7769.54	3016.15	13963.01	14285.06	16499.98	PTB - 21795' MD, 7770' TVD, 363' FNL, 150' FEL SEC 17

West(-)/East(+) (900 usft/in)

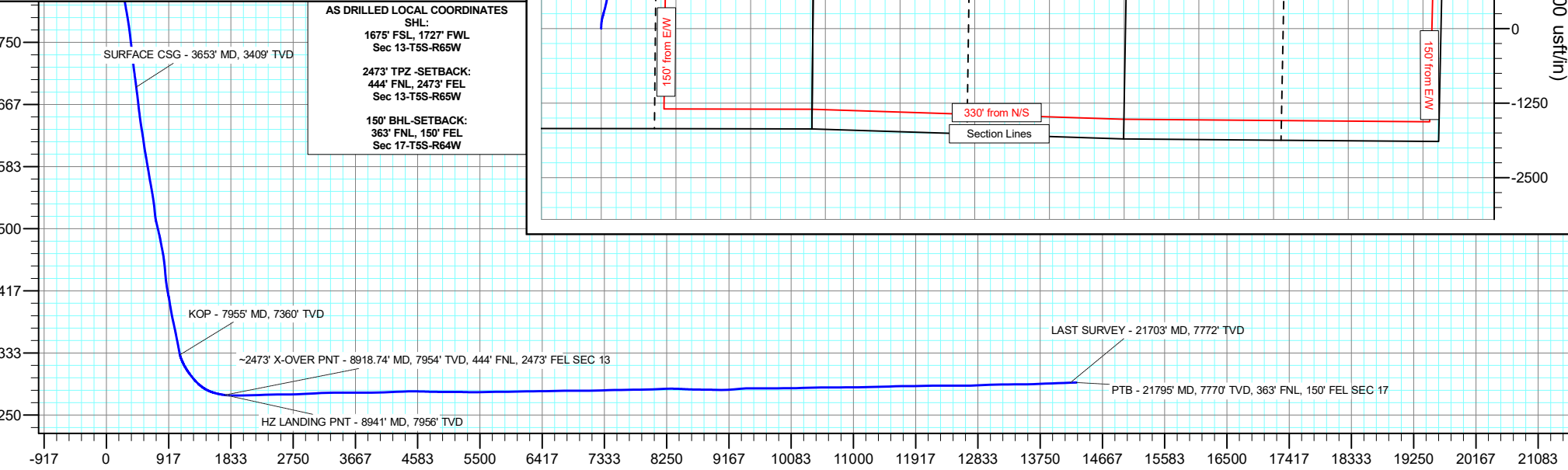


West(-)/East(+) (2500 usft/in)



AS DRILLED LOCAL COORDINATES
 SHL:
 1675' FSL, 1727' FWL
 Sec 13-T5S-R65W
 2473' TPZ - SETBACK:
 444' FNL, 2473' FEL
 Sec 13-T5S-R65W
 150' BHL - SETBACK:
 363' FNL, 150' FEL
 Sec 17-T5S-R64W

True Vertical Depth (2200 usft/in)



Vertical Section at 77.81° (2200 usft/in)

Civitas Resources

Survey Report

Company:	CRESTONE PEAK RESOURCES	Local Co-ordinate Reference:	Well STATE HURON 5-65 13-18-17 1AH - AS BUILT
Project:	ARAPAHOE COUNTY	TVD Reference:	KB 25' @ 5917.00usft
Site:	SEC 13-T5S-R65W	MD Reference:	KB 25' @ 5917.00usft
Well:	STATE HURON 5-65 13-18-17 1AH - AS BUILT	North Reference:	True
Wellbore:	OWB	Survey Calculation Method:	Minimum Curvature
Design:	FINAL	Database:	EDM

Project	ARAPAHOE COUNTY		
Map System:	US State Plane 1983	System Datum:	Mean Sea Level
Geo Datum:	North American Datum 1983		
Map Zone:	Colorado Central Zone		Using geodetic scale factor

Site	SEC 13-T5S-R65W				
Site Position:		Northing:	1,648,038.50 usft	Latitude:	39.609381°N
From:	Lat/Long	Easting:	3,247,131.81 usft	Longitude:	104.622842°W
Position Uncertainty:	0.00 usft	Slot Radius:	13.200 in	Grid Convergence:	0.55 °

Well	STATE HURON 5-65 13-18-17 1AH - AS BUILT					
Well Position	+N/-S	0.00 usft	Northing:	1,649,728.32 usft	Latitude:	39.613974°N
	+E/-W	0.00 usft	Easting:	3,248,859.75 usft	Longitude:	104.616651°W
Position Uncertainty		0.00 usft	Wellhead Elevation:	usft	Ground Level:	5,892.00 usft

Wellbore	OWB				
Magnetics	Model Name	Sample Date	Declination (°)	Dip Angle (°)	Field Strength (nT)
	IGRF2020	12/8/2025	7.22	65.86	51,074.55707467

Design	FINAL				
Audit Notes:					
Version:	1.0	Phase:	ACTUAL	Tie On Depth:	0.00
Vertical Section:	Depth From (TVD) (usft)	+N/-S (usft)	+E/-W (usft)	Direction (°)	
	0.00	0.00	0.00	77.81	

Survey Program	Date	12/13/2025			
From (usft)	To (usft)	Survey (Wellbore)	Tool Name	Description	
208.00	21,795.00	FINAL (OWB)	MWD OWSG	OWSG MWD - Standard	

Measured Depth (usft)	Inclination (°)	Azimuth (°)	Vertical Depth (usft)	+N/-S (usft)	+E/-W (usft)	Vertical Section (usft)	Dogleg Rate (°/100ft)	Build Rate (°/100ft)	Turn Rate (°/100ft)
0.00	0.00	0.00	0.00	0.00	0.00	0.00	0.00	0.00	0.00
208.00	2.43	358.45	207.94	4.41	-0.12	0.81	1.17	1.17	0.00
297.00	4.73	356.87	296.76	9.96	-0.37	1.74	2.59	2.58	-1.78
385.00	7.51	1.71	384.25	19.33	-0.40	3.69	3.21	3.16	5.50
474.00	9.24	3.65	472.30	32.28	0.23	7.04	1.97	1.94	2.18
569.00	11.58	1.80	565.73	49.42	1.02	11.43	2.49	2.46	-1.95
664.00	12.95	5.06	658.56	69.56	2.25	16.89	1.62	1.44	3.43
759.00	14.98	5.33	750.74	92.39	4.33	23.74	2.14	2.14	0.28
853.00	17.15	6.34	841.07	118.26	6.99	31.81	2.33	2.31	1.07
947.00	18.87	11.47	930.46	146.94	11.55	42.31	2.49	1.83	5.46

Civitas Resources

Survey Report

Company:	CRESTONE PEAK RESOURCES	Local Co-ordinate Reference:	Well STATE HURON 5-65 13-18-17 1AH - AS BUILT
Project:	ARAPAHOE COUNTY	TVD Reference:	KB 25' @ 5917.00usft
Site:	SEC 13-T5S-R65W	MD Reference:	KB 25' @ 5917.00usft
Well:	STATE HURON 5-65 13-18-17 1AH - AS BUILT	North Reference:	True
Wellbore:	OWB	Survey Calculation Method:	Minimum Curvature
Design:	FINAL	Database:	EDM

Survey									
Measured Depth (usft)	Inclination (°)	Azimuth (°)	Vertical Depth (usft)	+N/-S (usft)	+E/-W (usft)	Vertical Section (usft)	Dogleg Rate (°/100ft)	Build Rate (°/100ft)	Turn Rate (°/100ft)
1,042.00	19.71	15.17	1,020.13	177.46	18.79	55.84	1.56	0.88	3.89
1,137.00	21.26	14.51	1,109.12	209.59	27.30	70.94	1.65	1.63	-0.69
1,231.00	23.55	15.79	1,196.02	244.17	36.68	87.41	2.49	2.44	1.36
1,326.00	25.19	14.90	1,282.56	281.97	47.05	105.52	1.77	1.73	-0.94
1,420.00	25.36	15.52	1,367.56	320.70	57.58	123.99	0.33	0.18	0.66
1,515.00	25.32	13.80	1,453.42	360.03	67.87	142.35	0.78	-0.04	-1.81
1,610.00	25.36	13.27	1,539.28	399.56	77.38	160.00	0.24	0.04	-0.56
1,704.00	24.97	12.04	1,624.36	438.56	86.14	176.80	0.69	-0.41	-1.31
1,799.00	24.79	10.10	1,710.54	477.77	93.82	192.58	0.88	-0.19	-2.04
1,893.00	24.97	10.01	1,795.82	516.71	100.72	207.55	0.20	0.19	-0.10
1,988.00	24.83	9.79	1,881.99	556.12	107.60	222.59	0.18	-0.15	-0.23
2,082.00	24.75	10.72	1,967.32	594.90	114.62	237.64	0.42	-0.09	0.99
2,177.00	24.92	9.26	2,053.54	634.19	121.54	252.70	0.67	0.18	-1.54
2,272.00	25.63	10.45	2,139.44	674.15	128.48	267.93	0.92	0.75	1.25
2,366.00	25.41	9.09	2,224.27	714.06	135.36	283.07	0.67	-0.23	-1.45
2,461.00	25.81	9.35	2,309.94	754.59	141.94	298.06	0.44	0.42	0.27
2,555.00	24.70	8.91	2,394.96	794.19	148.30	312.65	1.20	-1.18	-0.47
2,650.00	24.17	7.44	2,481.45	833.08	153.90	326.32	0.85	-0.56	-1.55
2,744.00	23.29	5.33	2,567.50	870.67	158.11	338.38	1.30	-0.94	-2.24
2,839.00	22.71	4.18	2,654.95	907.66	161.20	349.20	0.77	-0.61	-1.21
2,934.00	21.83	4.58	2,742.86	943.56	163.94	359.47	0.94	-0.93	0.42
3,028.00	22.85	4.98	2,829.80	979.16	166.92	369.90	1.10	1.09	0.43
3,123.00	21.70	2.60	2,917.72	1,015.08	169.32	379.83	1.54	-1.21	-2.51
3,218.00	20.99	3.30	3,006.20	1,049.61	171.10	388.86	0.79	-0.75	0.74
3,312.00	21.92	3.70	3,093.68	1,083.93	173.20	398.16	1.00	0.99	0.43
3,407.00	23.11	6.17	3,181.44	1,120.17	176.35	408.88	1.60	1.25	2.60
3,501.00	22.71	7.18	3,268.03	1,156.51	180.60	420.71	0.60	-0.43	1.07
3,579.00	21.83	6.61	3,340.21	1,185.85	184.15	430.38	1.16	-1.13	-0.73
3,653.00	20.91	6.83	3,409.12	1,212.63	187.30	439.12	1.25	-1.25	0.30
SURFACE CSG - 3653' MD, 3409' TVD									
3,664.00	20.77	6.87	3,419.40	1,216.52	187.77	440.39	1.25	-1.25	0.32
3,759.00	21.48	7.09	3,508.02	1,250.50	191.93	451.64	0.75	0.75	0.23
3,853.00	22.14	4.14	3,595.29	1,285.25	195.34	462.30	1.36	0.70	-3.14
3,948.00	19.75	4.71	3,684.01	1,319.10	197.95	472.00	2.52	-2.52	0.60
4,042.00	20.24	7.84	3,772.34	1,351.04	201.47	482.19	1.25	0.52	3.33
4,137.00	20.59	7.71	3,861.38	1,383.87	205.95	493.50	0.37	0.37	-0.14
4,231.00	22.01	9.79	3,948.95	1,417.61	211.16	505.72	1.71	1.51	2.21
4,326.00	25.19	9.48	4,036.00	1,455.11	217.52	519.85	3.35	3.35	-0.33
4,420.00	23.07	8.47	4,121.78	1,493.06	223.53	533.74	2.30	-2.26	-1.07
4,515.00	22.45	7.22	4,209.38	1,529.46	228.55	546.33	0.83	-0.65	-1.32
4,610.00	24.66	5.55	4,296.46	1,567.19	232.75	558.40	2.43	2.33	-1.76
4,704.00	25.63	10.28	4,381.56	1,606.72	238.27	572.15	2.37	1.03	5.03

Civitas Resources

Survey Report

Company:	CRESTONE PEAK RESOURCES	Local Co-ordinate Reference:	Well STATE HURON 5-65 13-18-17 1AH - AS BUILT
Project:	ARAPAHOE COUNTY	TVD Reference:	KB 25' @ 5917.00usft
Site:	SEC 13-T5S-R65W	MD Reference:	KB 25' @ 5917.00usft
Well:	STATE HURON 5-65 13-18-17 1AH - AS BUILT	North Reference:	True
Wellbore:	OWB	Survey Calculation Method:	Minimum Curvature
Design:	FINAL	Database:	EDM

Survey									
Measured Depth (usft)	Inclination (°)	Azimuth (°)	Vertical Depth (usft)	+N/-S (usft)	+E/-W (usft)	Vertical Section (usft)	Dogleg Rate (°/100ft)	Build Rate (°/100ft)	Turn Rate (°/100ft)
4,799.00	21.70	12.79	4,468.56	1,644.08	245.83	587.42	4.27	-4.14	2.64
4,893.00	22.49	12.92	4,555.66	1,678.55	253.70	602.39	0.84	0.84	0.14
4,988.00	24.13	9.48	4,642.90	1,715.42	260.96	617.27	2.24	1.73	-3.62
5,083.00	24.22	8.87	4,729.57	1,753.82	267.16	631.44	0.28	0.09	-0.64
5,178.00	24.53	12.04	4,816.11	1,792.36	274.28	646.54	1.42	0.33	3.34
5,273.00	23.46	11.86	4,902.90	1,830.16	282.28	662.34	1.13	-1.13	-0.19
5,367.00	23.91	9.92	4,988.98	1,867.23	289.41	677.13	0.96	0.48	-2.06
5,462.00	24.04	7.80	5,075.78	1,905.37	295.35	691.00	0.92	0.14	-2.23
5,557.00	24.48	2.68	5,162.40	1,944.21	298.90	702.66	2.26	0.46	-5.39
5,651.00	22.09	359.69	5,248.74	1,981.34	299.71	711.30	2.84	-2.54	-3.18
5,745.00	21.65	10.01	5,336.01	2,016.11	302.63	721.49	4.11	-0.47	10.98
5,840.00	25.98	16.89	5,422.92	2,053.30	311.73	738.24	5.41	4.56	7.24
5,934.00	26.87	16.84	5,507.10	2,093.33	323.87	758.55	0.95	0.95	-0.05
6,029.00	26.34	15.83	5,592.04	2,134.16	335.84	778.87	0.73	-0.56	-1.06
6,123.00	23.02	12.52	5,677.44	2,172.18	345.51	796.36	3.82	-3.53	-3.52
6,218.00	23.46	15.08	5,764.74	2,208.57	354.46	812.79	1.16	0.46	2.69
6,312.00	22.49	15.52	5,851.28	2,243.96	364.14	829.72	1.05	-1.03	0.47
6,407.00	21.79	6.65	5,939.30	2,278.99	371.04	843.87	3.59	-0.74	-9.34
6,502.00	18.38	7.88	6,028.51	2,311.35	375.14	854.70	3.62	-3.59	1.29
6,597.00	19.66	1.01	6,118.33	2,342.17	377.48	863.49	2.71	1.35	-7.23
6,692.00	23.20	359.42	6,206.75	2,376.87	377.57	870.91	3.78	3.73	-1.67
6,786.00	22.58	6.52	6,293.37	2,413.32	379.43	880.43	3.01	-0.66	7.55
6,881.00	25.36	7.58	6,380.16	2,451.62	384.19	893.16	2.96	2.93	1.12
6,976.00	26.07	13.27	6,465.77	2,492.11	391.66	909.02	2.70	0.75	5.99
7,070.00	21.17	14.90	6,551.87	2,528.64	400.77	925.64	5.26	-5.21	1.73
7,165.00	21.21	11.07	6,640.45	2,562.08	408.48	940.23	1.46	0.04	-4.03
7,259.00	22.71	12.22	6,727.63	2,596.51	415.59	954.45	1.66	1.60	1.22
7,354.00	24.17	15.35	6,814.79	2,633.19	424.62	971.02	2.02	1.54	3.29
7,448.00	26.38	14.46	6,899.78	2,671.97	434.93	989.29	2.39	2.35	-0.95
7,543.00	26.51	13.63	6,984.84	2,713.01	445.20	1,007.99	0.41	0.14	-0.87
7,638.00	23.38	15.12	7,070.97	2,751.82	455.11	1,025.87	3.36	-3.29	1.57
7,733.00	23.11	14.64	7,158.26	2,788.06	464.74	1,042.94	0.35	-0.28	-0.51
7,828.00	24.35	12.88	7,245.23	2,825.19	473.82	1,059.65	1.50	1.31	-1.85
7,922.00	24.79	10.94	7,330.72	2,863.43	481.88	1,075.60	0.98	0.47	-2.06
7,955.00	26.75	17.32	7,360.44	2,877.32	485.40	1,081.98	10.28	5.93	19.32
KOP - 7955' MD, 7360' TVD									
8,016.00	30.98	26.93	7,413.88	2,904.45	496.61	1,098.66	10.28	6.94	15.76
8,111.00	32.04	40.77	7,494.98	2,945.39	524.18	1,134.25	7.68	1.12	14.57
8,205.00	33.98	55.93	7,573.94	2,979.05	562.29	1,178.61	9.00	2.06	16.13
8,300.00	37.61	66.82	7,651.06	3,005.36	611.00	1,231.77	7.70	3.82	11.46
8,395.00	41.10	66.60	7,724.50	3,029.18	666.32	1,290.88	3.68	3.67	-0.23
8,489.00	47.99	65.19	7,791.46	3,056.14	726.45	1,355.34	7.40	7.33	-1.50
8,584.00	56.39	66.33	7,849.65	3,086.89	794.84	1,428.69	8.89	8.84	1.20

Civitas Resources

Survey Report

Company:	CRESTONE PEAK RESOURCES	Local Co-ordinate Reference:	Well STATE HURON 5-65 13-18-17 1AH - AS BUILT
Project:	ARAPAHOE COUNTY	TVD Reference:	KB 25' @ 5917.00usft
Site:	SEC 13-T5S-R65W	MD Reference:	KB 25' @ 5917.00usft
Well:	STATE HURON 5-65 13-18-17 1AH - AS BUILT	North Reference:	True
Wellbore:	OWB	Survey Calculation Method:	Minimum Curvature
Design:	FINAL	Database:	EDM

Survey									
Measured Depth (usft)	Inclination (°)	Azimuth (°)	Vertical Depth (usft)	+N/-S (usft)	+E/-W (usft)	Vertical Section (usft)	Dogleg Rate (°/100ft)	Build Rate (°/100ft)	Turn Rate (°/100ft)
8,679.00	66.86	70.43	7,894.75	3,117.50	872.47	1,511.03	11.65	11.02	4.32
8,773.00	74.77	76.16	7,925.64	3,142.88	957.42	1,599.42	10.19	8.41	6.10
8,867.00	79.85	87.66	7,946.34	3,155.67	1,048.03	1,690.69	13.10	5.40	12.23
8,918.74	83.39	89.76	7,953.89	3,156.81	1,099.19	1,740.94	7.93	6.83	4.06
-2473' X-OVER PNT - 8918.74' MD, 7954' TVD, 444' FNL, 2473' FEL SEC 13									
8,941.00	84.91	90.65	7,956.16	3,156.73	1,121.33	1,762.57	7.93	6.85	4.01
HZ LANDING PNT - 8941' MD, 7956' TVD									
8,962.00	86.35	91.49	7,957.76	3,156.34	1,142.27	1,782.95	7.93	6.85	3.99
9,056.00	88.60	89.51	7,961.90	3,155.52	1,236.16	1,874.55	3.19	2.39	-2.11
9,151.00	92.00	90.30	7,961.40	3,155.68	1,331.15	1,967.43	3.67	3.58	0.83
9,245.00	91.83	90.39	7,958.26	3,155.12	1,425.09	2,059.14	0.20	-0.18	0.10
9,340.00	90.63	89.20	7,956.22	3,155.46	1,520.07	2,152.04	1.78	-1.26	-1.25
9,434.00	92.36	91.05	7,953.77	3,155.25	1,614.03	2,243.84	2.69	1.84	1.97
9,529.00	91.38	90.96	7,950.67	3,153.59	1,708.96	2,336.28	1.04	-1.03	-0.09
9,623.00	91.21	92.02	7,948.54	3,151.14	1,802.90	2,427.59	1.14	-0.18	1.13
9,718.00	91.07	92.11	7,946.65	3,147.72	1,897.82	2,519.65	0.18	-0.15	0.09
9,813.00	90.68	92.37	7,945.20	3,144.01	1,992.74	2,611.64	0.49	-0.41	0.27
9,908.00	89.53	91.45	7,945.03	3,140.84	2,087.68	2,703.78	1.55	-1.21	-0.97
10,002.00	92.40	89.82	7,943.44	3,139.80	2,181.65	2,795.41	3.51	3.05	-1.73
10,096.00	92.09	89.55	7,939.76	3,140.32	2,275.58	2,887.32	0.44	-0.33	-0.29
10,191.00	92.58	89.60	7,935.89	3,141.02	2,370.49	2,980.25	0.52	0.52	0.05
10,286.00	94.61	89.38	7,929.94	3,141.86	2,465.30	3,073.10	2.15	2.14	-0.23
10,381.00	91.78	91.27	7,924.64	3,141.32	2,560.14	3,165.68	3.58	-2.98	1.99
10,476.00	92.00	91.58	7,921.51	3,138.96	2,655.05	3,257.96	0.40	0.23	0.33
10,570.00	90.50	91.89	7,919.46	3,136.12	2,748.99	3,349.17	1.63	-1.60	0.33
10,665.00	89.84	91.80	7,919.17	3,133.06	2,843.94	3,441.34	0.70	-0.69	-0.09
10,759.00	90.23	91.67	7,919.12	3,130.21	2,937.89	3,532.57	0.44	0.41	-0.14
10,853.00	89.88	89.95	7,919.03	3,128.88	3,031.88	3,624.16	1.87	-0.37	-1.83
10,947.00	89.35	87.09	7,919.66	3,131.31	3,125.84	3,716.51	3.09	-0.56	-3.04
11,042.00	90.10	87.70	7,920.12	3,135.63	3,220.74	3,810.18	1.02	0.79	0.64
11,136.00	91.12	89.42	7,919.11	3,137.99	3,314.70	3,902.53	2.13	1.09	1.83
11,231.00	91.56	89.55	7,916.89	3,138.84	3,409.67	3,995.53	0.48	0.46	0.14
11,325.00	91.83	92.95	7,914.11	3,136.80	3,503.59	4,086.91	3.63	0.29	3.62
11,420.00	92.31	93.26	7,910.68	3,131.65	3,598.39	4,178.48	0.60	0.51	0.33
11,514.00	91.91	93.08	7,907.22	3,126.46	3,692.18	4,269.06	0.47	-0.43	-0.19
11,609.00	92.49	97.00	7,903.57	3,118.12	3,786.72	4,359.72	4.17	0.61	4.13
11,703.00	90.90	94.62	7,900.79	3,108.61	3,880.19	4,449.07	3.04	-1.69	-2.53
11,797.00	89.79	92.68	7,900.22	3,102.63	3,973.99	4,539.49	2.38	-1.18	-2.06
11,892.00	88.82	92.11	7,901.38	3,098.66	4,068.90	4,631.42	1.18	-1.02	-0.60
11,986.00	87.72	92.15	7,904.21	3,095.17	4,162.79	4,722.46	1.17	-1.17	0.04
12,080.00	89.48	91.01	7,906.51	3,092.58	4,256.72	4,813.72	2.23	1.87	-1.21
12,175.00	88.42	90.39	7,908.25	3,091.42	4,351.70	4,906.31	1.29	-1.12	-0.65
12,269.00	90.54	90.08	7,909.10	3,091.03	4,445.69	4,998.10	2.28	2.26	-0.33

Civitas Resources

Survey Report

Company:	CRESTONE PEAK RESOURCES	Local Co-ordinate Reference:	Well STATE HURON 5-65 13-18-17 1AH - AS BUILT
Project:	ARAPAHOE COUNTY	TVD Reference:	KB 25' @ 5917.00usft
Site:	SEC 13-T5S-R65W	MD Reference:	KB 25' @ 5917.00usft
Well:	STATE HURON 5-65 13-18-17 1AH - AS BUILT	North Reference:	True
Wellbore:	OWB	Survey Calculation Method:	Minimum Curvature
Design:	FINAL	Database:	EDM

Survey										
Measured Depth (usft)	Inclination (°)	Azimuth (°)	Vertical Depth (usft)	+N/-S (usft)	+E/-W (usft)	Vertical Section (usft)	Dogleg Rate (°/100ft)	Build Rate (°/100ft)	Turn Rate (°/100ft)	
12,363.00	90.46	86.07	7,908.28	3,094.19	4,539.61	5,090.58	4.27	-0.09	-4.27	
12,458.00	89.35	88.63	7,908.44	3,098.58	4,634.50	5,184.25	2.94	-1.17	2.69	
12,552.00	88.20	89.07	7,910.45	3,100.46	4,728.46	5,276.49	1.31	-1.22	0.47	
12,647.00	88.82	89.33	7,912.92	3,101.79	4,823.42	5,369.59	0.71	0.65	0.27	
12,741.00	91.56	91.45	7,912.61	3,101.15	4,917.40	5,461.32	3.69	2.91	2.26	
12,836.00	91.47	92.33	7,910.10	3,098.02	5,012.31	5,553.43	0.93	-0.09	0.93	
12,930.00	90.94	91.63	7,908.12	3,094.77	5,106.23	5,644.55	0.93	-0.56	-0.74	
13,025.00	90.77	91.63	7,906.70	3,092.07	5,201.19	5,736.79	0.18	-0.18	0.00	
13,119.00	89.70	91.67	7,906.32	3,089.36	5,295.14	5,828.06	1.14	-1.14	0.04	
13,213.00	90.77	92.82	7,905.93	3,085.68	5,389.07	5,919.09	1.67	1.14	1.22	
13,308.00	90.63	95.72	7,904.77	3,078.61	5,483.79	6,010.18	3.06	-0.15	3.05	
13,402.00	92.22	95.68	7,902.43	3,069.28	5,577.29	6,099.60	1.69	1.69	-0.04	
13,497.00	90.41	92.15	7,900.25	3,062.79	5,672.03	6,190.83	4.17	-1.91	-3.72	
13,591.00	90.90	90.04	7,899.18	3,061.00	5,766.00	6,282.31	2.30	0.52	-2.24	
13,686.00	90.54	87.57	7,897.98	3,062.98	5,860.96	6,375.55	2.63	-0.38	-2.60	
13,781.00	91.34	92.29	7,896.43	3,063.10	5,955.92	6,468.39	5.04	0.84	4.97	
13,875.00	91.12	95.28	7,894.41	3,056.89	6,049.68	6,558.73	3.19	-0.23	3.18	
13,969.00	90.54	91.58	7,893.04	3,051.27	6,143.49	6,649.23	3.98	-0.62	-3.94	
14,064.00	90.72	89.73	7,892.00	3,050.18	6,238.47	6,741.85	1.96	0.19	-1.95	
14,159.00	91.12	91.05	7,890.47	3,049.54	6,333.46	6,834.55	1.45	0.42	1.39	
14,253.00	89.35	90.79	7,890.09	3,048.03	6,427.44	6,926.10	1.90	-1.88	-0.28	
14,348.00	89.93	89.91	7,890.69	3,047.45	6,522.43	7,018.83	1.11	0.61	-0.93	
14,442.00	90.59	90.61	7,890.26	3,047.02	6,616.43	7,110.62	1.02	0.70	0.74	
14,536.00	91.52	90.17	7,888.53	3,046.38	6,710.41	7,202.34	1.09	0.99	-0.47	
14,631.00	92.14	86.29	7,885.49	3,049.31	6,805.30	7,295.71	4.13	0.65	-4.08	
14,726.00	91.30	86.25	7,882.64	3,055.49	6,900.05	7,389.64	0.89	-0.88	-0.04	
14,820.00	91.03	87.13	7,880.73	3,060.92	6,993.88	7,482.49	0.98	-0.29	0.94	
14,915.00	90.59	87.84	7,879.39	3,065.09	7,088.78	7,576.13	0.88	-0.46	0.75	
15,010.00	91.43	90.35	7,877.71	3,066.59	7,183.74	7,669.27	2.79	0.88	2.64	
15,104.00	90.50	89.25	7,876.13	3,066.91	7,277.72	7,761.20	1.53	-0.99	-1.17	
15,199.00	90.46	87.31	7,875.33	3,069.77	7,372.67	7,854.61	2.04	-0.04	-2.04	
15,293.00	91.87	87.48	7,873.42	3,074.04	7,466.55	7,947.28	1.51	1.50	0.18	
15,387.00	92.14	87.35	7,870.13	3,078.27	7,560.40	8,039.91	0.32	0.29	-0.14	
15,482.00	92.80	91.01	7,866.04	3,079.63	7,655.29	8,132.94	3.91	0.69	3.85	
15,576.00	91.91	92.55	7,862.18	3,076.71	7,749.16	8,224.08	1.89	-0.95	1.64	
15,671.00	89.70	92.37	7,860.84	3,072.64	7,844.05	8,315.97	2.33	-2.33	-0.19	
15,765.00	87.89	92.07	7,862.82	3,069.00	7,937.96	8,406.99	1.95	-1.93	-0.32	
15,860.00	87.27	92.07	7,866.83	3,065.57	8,032.81	8,498.98	0.65	-0.65	0.00	
15,955.00	87.72	90.61	7,870.98	3,063.35	8,127.69	8,591.26	1.61	0.47	-1.54	
16,049.00	89.35	90.57	7,873.39	3,062.38	8,221.65	8,682.90	1.73	1.73	-0.04	
16,144.00	88.78	90.61	7,874.94	3,061.40	8,316.64	8,775.53	0.60	-0.60	0.04	
16,239.00	89.70	90.26	7,876.20	3,060.68	8,411.62	8,868.22	1.04	0.97	-0.37	

Civitas Resources

Survey Report

Company:	CRESTONE PEAK RESOURCES	Local Co-ordinate Reference:	Well STATE HURON 5-65 13-18-17 1AH - AS BUILT
Project:	ARAPAHOE COUNTY	TVD Reference:	KB 25' @ 5917.00usft
Site:	SEC 13-T5S-R65W	MD Reference:	KB 25' @ 5917.00usft
Well:	STATE HURON 5-65 13-18-17 1AH - AS BUILT	North Reference:	True
Wellbore:	OWB	Survey Calculation Method:	Minimum Curvature
Design:	FINAL	Database:	EDM

Survey										
Measured Depth (usft)	Inclination (°)	Azimuth (°)	Vertical Depth (usft)	+N/-S (usft)	+E/-W (usft)	Vertical Section (usft)	Dogleg Rate (°/100ft)	Build Rate (°/100ft)	Turn Rate (°/100ft)	
16,333.00	89.00	89.91	7,877.26	3,060.54	8,505.62	8,960.07	0.83	-0.74	-0.37	
16,428.00	89.00	89.42	7,878.92	3,061.10	8,600.60	9,053.03	0.52	0.00	-0.52	
16,522.00	93.37	89.60	7,876.98	3,061.90	8,694.55	9,145.03	4.65	4.65	0.19	
16,616.00	95.10	89.69	7,870.03	3,062.48	8,788.29	9,236.78	1.84	1.84	0.10	
16,711.00	95.49	90.04	7,861.27	3,062.71	8,882.89	9,329.29	0.55	0.41	0.37	
16,805.00	91.21	91.49	7,855.78	3,061.45	8,976.69	9,420.72	4.81	-4.55	1.54	
16,899.00	90.01	91.01	7,854.78	3,059.40	9,070.66	9,512.13	1.37	-1.28	-0.51	
16,994.00	89.22	90.52	7,855.41	3,058.13	9,165.65	9,604.71	0.98	-0.83	-0.52	
17,088.00	90.54	89.86	7,855.61	3,057.82	9,259.65	9,696.53	1.57	1.40	-0.70	
17,183.00	90.01	90.79	7,855.15	3,057.28	9,354.64	9,789.27	1.13	-0.56	0.98	
17,277.00	90.32	91.85	7,854.88	3,055.12	9,448.62	9,880.66	1.17	0.33	1.13	
17,372.00	90.54	91.54	7,854.17	3,052.31	9,543.57	9,972.89	0.40	0.23	-0.33	
17,466.00	89.75	91.93	7,853.93	3,049.46	9,637.53	10,064.12	0.94	-0.84	0.41	
17,561.00	91.74	90.13	7,852.70	3,047.75	9,732.50	10,156.59	2.82	2.09	-1.89	
17,655.00	91.69	90.57	7,849.88	3,047.18	9,826.45	10,248.30	0.47	-0.05	0.47	
17,749.00	91.65	90.00	7,847.15	3,046.71	9,920.41	10,340.05	0.61	-0.04	-0.61	
17,843.00	91.12	89.86	7,844.87	3,046.83	10,014.38	10,431.92	0.58	-0.56	-0.15	
17,937.00	90.63	90.61	7,843.44	3,046.44	10,108.37	10,523.71	0.95	-0.52	0.80	
18,031.00	90.32	92.82	7,842.66	3,043.63	10,202.32	10,614.95	2.37	-0.33	2.35	
18,125.00	89.57	94.75	7,842.75	3,037.42	10,296.11	10,705.31	2.20	-0.80	2.05	
18,219.00	91.16	93.08	7,842.15	3,031.01	10,389.88	10,795.62	2.45	1.69	-1.78	
18,314.00	90.50	95.33	7,840.77	3,024.04	10,484.61	10,886.74	2.47	-0.69	2.37	
18,408.00	90.37	91.98	7,840.06	3,018.05	10,578.40	10,977.15	3.57	-0.14	-3.56	
18,502.00	90.01	92.24	7,839.75	3,014.59	10,672.34	11,068.24	0.47	-0.38	0.28	
18,596.00	91.91	91.27	7,838.17	3,011.71	10,766.27	11,159.45	2.27	2.02	-1.03	
18,691.00	91.43	91.36	7,835.40	3,009.53	10,861.21	11,251.78	0.51	-0.51	0.09	
18,785.00	89.93	92.99	7,834.29	3,005.96	10,955.13	11,342.83	2.36	-1.60	1.73	
18,879.00	92.31	91.14	7,832.45	3,002.58	11,049.04	11,433.91	3.21	2.53	-1.97	
18,973.00	92.22	90.74	7,828.74	3,001.04	11,142.95	11,525.38	0.44	-0.10	-0.43	
19,067.00	92.00	90.39	7,825.28	3,000.11	11,236.88	11,617.00	0.44	-0.23	-0.37	
19,162.00	90.63	90.00	7,823.10	2,999.79	11,331.86	11,709.76	1.50	-1.44	-0.41	
19,256.00	90.28	93.08	7,822.35	2,997.26	11,425.81	11,801.06	3.30	-0.37	3.28	
19,349.00	90.59	90.70	7,821.64	2,994.19	11,518.75	11,891.26	2.58	0.33	-2.56	
19,443.00	90.77	89.07	7,820.53	2,994.38	11,612.74	11,983.17	1.74	0.19	-1.73	
19,538.00	91.78	89.86	7,818.41	2,995.27	11,707.71	12,076.19	1.35	1.06	0.83	
19,632.00	90.41	89.07	7,816.62	2,996.15	11,801.68	12,168.23	1.68	-1.46	-0.84	
19,726.00	89.97	87.66	7,816.30	2,998.83	11,895.64	12,260.64	1.57	-0.47	-1.50	
19,820.00	90.06	87.09	7,816.28	3,003.13	11,989.54	12,353.33	0.61	0.10	-0.61	
19,914.00	89.79	88.10	7,816.40	3,007.08	12,083.46	12,445.96	1.11	-0.29	1.07	
20,009.00	89.70	87.66	7,816.83	3,010.59	12,178.39	12,539.50	0.47	-0.09	-0.46	
20,103.00	90.15	89.55	7,816.95	3,012.88	12,272.36	12,631.83	2.07	0.48	2.01	
20,196.00	91.03	90.22	7,815.99	3,013.07	12,365.35	12,722.77	1.19	0.95	0.72	
20,290.00	92.89	89.47	7,812.78	3,013.32	12,459.29	12,814.64	2.13	1.98	-0.80	

Civitas Resources

Survey Report

Company:	CRESTONE PEAK RESOURCES	Local Co-ordinate Reference:	Well STATE HURON 5-65 13-18-17 1AH - AS BUILT
Project:	ARAPAHOE COUNTY	TVD Reference:	KB 25' @ 5917.00usft
Site:	SEC 13-T5S-R65W	MD Reference:	KB 25' @ 5917.00usft
Well:	STATE HURON 5-65 13-18-17 1AH - AS BUILT	North Reference:	True
Wellbore:	OWB	Survey Calculation Method:	Minimum Curvature
Design:	FINAL	Database:	EDM

Survey										
Measured Depth (usft)	Inclination (°)	Azimuth (°)	Vertical Depth (usft)	+N/-S (usft)	+E/-W (usft)	Vertical Section (usft)	Dogleg Rate (°/100ft)	Build Rate (°/100ft)	Turn Rate (°/100ft)	
20,384.00	93.02	89.03	7,807.93	3,014.55	12,553.16	12,906.65	0.49	0.14	-0.47	
20,478.00	91.78	87.97	7,803.99	3,017.01	12,647.04	12,998.94	1.73	-1.32	-1.13	
20,573.00	91.47	88.41	7,801.30	3,020.01	12,741.96	13,092.34	0.57	-0.33	0.46	
20,667.00	90.90	87.84	7,799.36	3,023.08	12,835.89	13,184.81	0.86	-0.61	-0.61	
20,761.00	90.37	87.31	7,798.31	3,027.06	12,929.79	13,277.44	0.80	-0.56	-0.56	
20,855.00	90.81	89.73	7,797.35	3,029.49	13,023.75	13,369.79	2.62	0.47	2.57	
20,950.00	90.01	89.95	7,796.67	3,029.75	13,118.75	13,462.70	0.87	-0.84	0.23	
21,044.00	89.97	89.11	7,796.68	3,030.52	13,212.74	13,554.74	0.89	-0.04	-0.89	
21,138.00	92.22	91.41	7,794.89	3,030.10	13,306.71	13,646.50	3.42	2.39	2.45	
21,232.00	92.84	92.55	7,790.74	3,026.85	13,400.56	13,737.55	1.38	0.66	1.21	
21,327.00	92.58	91.89	7,786.25	3,023.18	13,495.39	13,829.46	0.75	-0.27	-0.69	
21,421.00	92.18	91.45	7,782.34	3,020.44	13,589.26	13,920.64	0.63	-0.43	-0.47	
21,515.00	92.14	90.74	7,778.80	3,018.65	13,683.18	14,012.06	0.76	-0.04	-0.76	
21,609.00	92.00	90.44	7,775.40	3,017.68	13,777.11	14,103.67	0.35	-0.15	-0.32	
21,703.00	91.74	90.48	7,772.34	3,016.92	13,871.06	14,195.34	0.28	-0.28	0.04	
LAST SURVEY - 21703' MD, 7772' TVD										
21,795.00	91.74	90.48	7,769.54	3,016.15	13,963.01	14,285.06	0.00	0.00	0.00	
PTB - 21795' MD, 7770' TVD, 363' FNL, 150' FEL SEC 17										

Design Targets										
Target Name	Dip Angle (°)	Dip Dir. (°)	TVD (usft)	+N/-S (usft)	+E/-W (usft)	Northing (usft)	Easting (usft)	Latitude	Longitude	
PBHL-ST. HURON 1AH - hit/miss target - Shape	0.00	0.00	7,820.00	2,979.11	13,963.38	1,652,842.99	3,262,793.17	39.622142°N	104.567083°W	
- actual wellpath misses target center by 62.59usft at 21794.14usft MD (7769.57 TVD, 3016.16 N, 13962.16 E)										
- Point										
LP-ST. HURON 1AH (P; - actual wellpath misses target center by 30.89usft at 8917.49usft MD (7953.74 TVD, 3156.81 N, 1097.95 E)	0.00	0.00	7,950.00	3,126.17	1,099.19	1,652,864.96	3,249,928.46	39.622556°N	104.612749°W	
- Point										

Design Annotations					
Measured Depth (usft)	Vertical Depth (usft)	Local Coordinates		Comment	
		+N/-S (usft)	+E/-W (usft)		
3,653.00	3,409.12	1,212.63	187.30	SURFACE CSG - 3653' MD, 3409' TVD	
7,955.00	7,360.44	2,877.32	485.40	KOP - 7955' MD, 7360' TVD	
8,918.74	7,953.89	3,156.81	1,099.19	~2473' X-OVER PNT - 8918.74' MD, 7954' TVD, 444' FNL, 2473' FEL SEC 13	
8,941.00	7,956.16	3,156.73	1,121.33	HZ LANDING PNT - 8941' MD, 7956' TVD	
21,703.00	7,772.34	3,016.92	13,871.06	LAST SURVEY - 21703' MD, 7772' TVD	
21,795.00	7,769.54	3,016.15	13,963.01	PTB - 21795' MD, 7770' TVD, 363' FNL, 150' FEL SEC 17	

Checked By: _____ Approved By: _____ Date: _____