

CRESTONE PEAK RESOURCES

ARAPAHOE COUNTY

SEC 13-T5S-R65W

STATE LA PLATA 5-65 13-14-15-16 4BH - AS BUILT

OWB

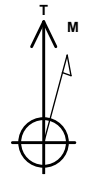
Design: FINAL

Standard Survey Report

13 December, 2025

Project: ARAPAHOE COUNTY
 Site: SEC 13-T5S-R65W
 Well: STATE LA PLATA 5-65 13-14-15-16 4BH - AS BUILT
 Wellbore: OWB
 Design: FINAL

PROJECT DETAILS: ARAPAHOE COUNTY
 Geodetic System: US State Plane 1983
 Datum: North American Datum 1983
 Ellipsoid: GRS 1980
 Zone: Colorado Central Zone
 System Datum: Mean Sea Level



Azimuths to True North
 Magnetic North: 7.22°
 Magnetic Field
 Strength: 51074.1nT
 Dip Angle: 65.86°
 Date: 12/8/2025
 Model: IGRF2020

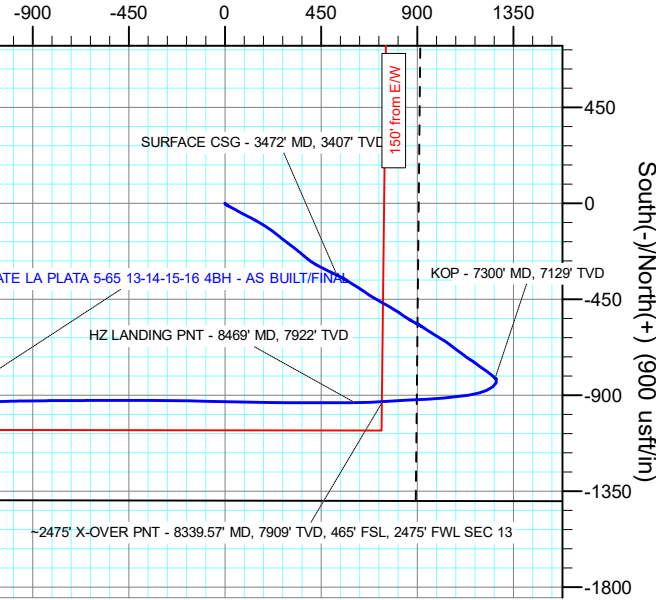
WELL DETAILS: STATE LA PLATA 5-65 13-14-15-16 4BH - AS BUILT

+N/-S	+E/-W	Northing	Easting	Latitude	Longitude	Slot
0.00	0.00	1649447.12	3248860.51	39.613202°N	104.616658°W	

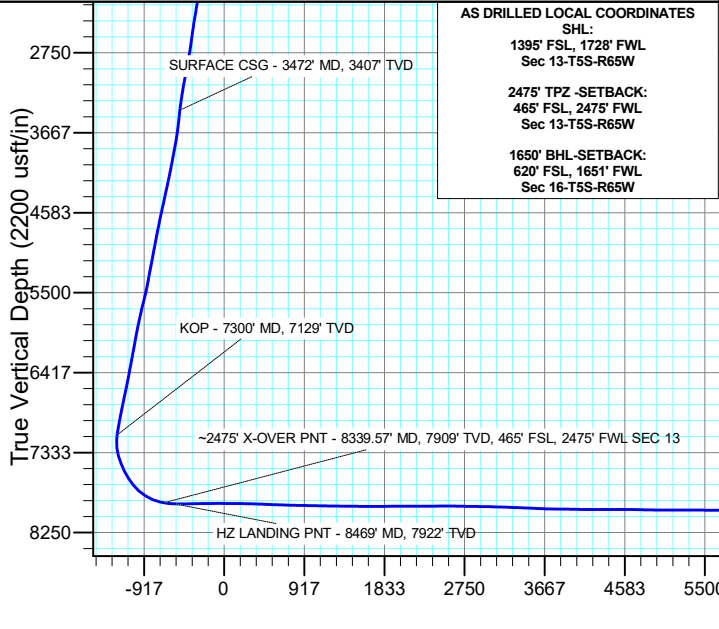
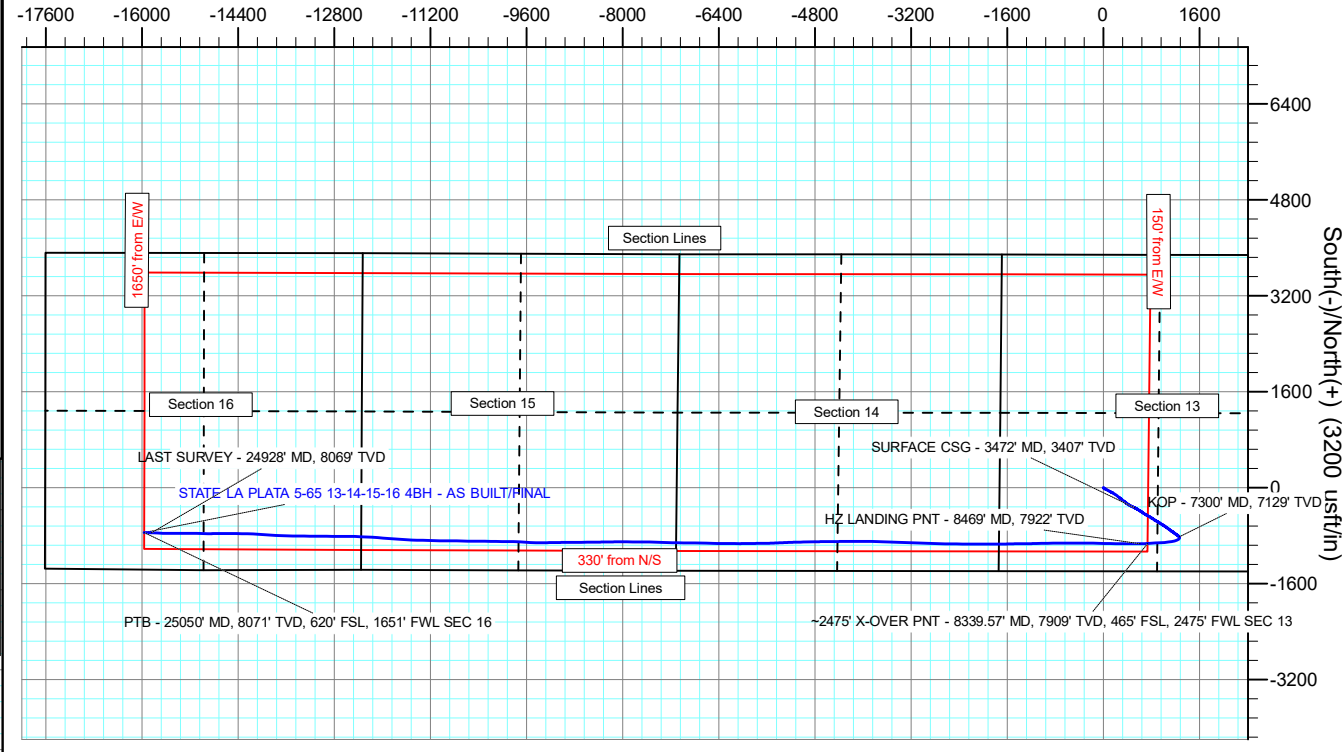
ANNOTATIONS

MD	Inc	Azi	TVD	+N/-S	+E/-W	VSec	Departure	Annotation
3472.00	7.97	116.19	3407.13	-336.59	523.66	-507.33	625.43	SURFACE CSG - 3472' MD, 3407' TVD
7300.00	10.58	135.48	7128.99	-819.25	1264.40	-1224.69	1510.94	KOP - 7300' MD, 7129' TVD
8339.57	79.23	266.72	7909.44	-930.42	736.77	-692.44	2089.13	~2475' X-OVER PNT - 8339.57' MD, 7909' TVD, 465' FSL, 2475' FWL SEC 13
8469.00	88.86	269.51	7922.38	-935.32	608.25	-563.83	2217.54	HZ LANDING PNT - 8469' MD, 7922' TVD
24928.00	89.00	272.21	8068.66	-752.34	-15840.52	15858.37	18672.44	LAST SURVEY - 24928' MD, 8069' TVD
25050.00	89.00	272.21	8070.79	-747.64	-15962.41	15979.91	18794.42	PTB - 25050' MD, 8071' TVD, 620' FSL, 1651' FWL SEC 16

West(-)/East(+) (900 usft/in)



West(-)/East(+) (3200 usft/in)



AS DRILLED LOCAL COORDINATES
 SHL:
 1395' FSL, 1728' FWL
 Sec 13-T5S-R65W
 2475' TPZ -SETBACK:
 465' FSL, 2475' FWL
 Sec 13-T5S-R65W
 1650' BHL-SETBACK:
 620' FSL, 1651' FWL
 Sec 16-T5S-R65W

Vertical Section at 267.32° (2200 usft/in)

Civitas Resources

Survey Report

Company:	CRESTONE PEAK RESOURCES	Local Co-ordinate Reference:	Well STATE LA PLATA 5-65 13-14-15-16 4BH - AS BUILT
Project:	ARAPAHOE COUNTY	TVD Reference:	KB 25' @ 5922.00usft
Site:	SEC 13-T5S-R65W	MD Reference:	KB 25' @ 5922.00usft
Well:	STATE LA PLATA 5-65 13-14-15-16 4BH - AS BUILT	North Reference:	True
Wellbore:	OWB	Survey Calculation Method:	Minimum Curvature
Design:	FINAL	Database:	EDM

Project	ARAPAHOE COUNTY		
Map System:	US State Plane 1983	System Datum:	Mean Sea Level
Geo Datum:	North American Datum 1983		
Map Zone:	Colorado Central Zone		Using geodetic scale factor

Site	SEC 13-T5S-R65W				
Site Position:		Northing:	1,648,038.50 usft	Latitude:	39.609381°N
From:	Lat/Long	Easting:	3,247,131.81 usft	Longitude:	104.622842°W
Position Uncertainty:	0.00 usft	Slot Radius:	13.200 in	Grid Convergence:	0.55 °

Well	STATE LA PLATA 5-65 13-14-15-16 4BH - AS BUILT					
Well Position	+N/-S	0.00 usft	Northing:	1,649,447.11 usft	Latitude:	39.613202°N
	+E/-W	0.00 usft	Easting:	3,248,860.51 usft	Longitude:	104.616658°W
Position Uncertainty		0.00 usft	Wellhead Elevation:	usft	Ground Level:	5,897.00 usft

Wellbore	OWB				
Magnetics	Model Name	Sample Date	Declination (°)	Dip Angle (°)	Field Strength (nT)
	IGRF2020	12/8/2025	7.22	65.86	51,074.10706650

Design	FINAL				
Audit Notes:					
Version:	1.0	Phase:	ACTUAL	Tie On Depth:	0.00
Vertical Section:		Depth From (TVD) (usft)	+N/-S (usft)	+E/-W (usft)	Direction (°)
		0.00	0.00	0.00	267.32

Survey Program		Date	12/13/2025		
From (usft)	To (usft)	Survey (Wellbore)	Tool Name	Description	
208.00	25,050.00	FINAL (OWB)	MWD OWSG	OWSG MWD - Standard	

Survey										
Measured Depth (usft)	Inclination (°)	Azimuth (°)	Vertical Depth (usft)	+N/-S (usft)	+E/-W (usft)	Vertical Section (usft)	Dogleg Rate (°/100ft)	Build Rate (°/100ft)	Turn Rate (°/100ft)	
0.00	0.00	0.00	0.00	0.00	0.00	0.00	0.00	0.00	0.00	0.00
208.00	0.31	233.48	208.00	-0.33	-0.45	0.47	0.15	0.15	0.00	
297.00	2.03	144.15	296.98	-1.76	0.28	-0.20	2.30	1.93	-100.37	
386.00	3.62	127.94	385.87	-4.76	3.42	-3.19	1.98	1.79	-18.21	
475.00	6.01	120.93	474.55	-8.88	9.63	-9.20	2.76	2.69	-7.88	
570.00	8.93	118.99	568.73	-15.02	20.35	-19.62	3.08	3.07	-2.04	
664.00	10.12	116.08	661.44	-22.18	34.15	-33.07	1.37	1.27	-3.10	
759.00	10.12	119.70	754.96	-29.99	48.89	-47.44	0.67	0.00	3.81	
854.00	10.52	119.39	848.42	-38.38	63.70	-61.84	0.43	0.42	-0.33	

Civitas Resources

Survey Report

Company:	CRESTONE PEAK RESOURCES	Local Co-ordinate Reference:	Well STATE LA PLATA 5-65 13-14-15-16 4BH - AS BUILT
Project:	ARAPAHOE COUNTY	TVD Reference:	KB 25' @ 5922.00usft
Site:	SEC 13-T5S-R65W	MD Reference:	KB 25' @ 5922.00usft
Well:	STATE LA PLATA 5-65 13-14-15-16 4BH - AS BUILT	North Reference:	True
Wellbore:	OWB	Survey Calculation Method:	Minimum Curvature
Design:	FINAL	Database:	EDM

Survey										
Measured Depth (usft)	Inclination (°)	Azimuth (°)	Vertical Depth (usft)	+N/-S (usft)	+E/-W (usft)	Vertical Section (usft)	Dogleg Rate (°/100ft)	Build Rate (°/100ft)	Turn Rate (°/100ft)	
948.00	10.87	118.60	940.79	-46.83	78.96	-76.68	0.40	0.37	-0.84	
1,043.00	11.53	116.66	1,033.98	-55.38	95.31	-92.61	0.80	0.69	-2.04	
1,137.00	12.02	117.76	1,126.00	-64.15	112.37	-109.24	0.57	0.52	1.17	
1,232.00	12.46	117.32	1,218.84	-73.47	130.23	-126.65	0.47	0.46	-0.46	
1,326.00	13.21	119.30	1,310.49	-83.38	148.60	-144.54	0.92	0.80	2.11	
1,421.00	13.92	120.89	1,402.84	-94.55	167.87	-163.27	0.84	0.75	1.67	
1,515.00	14.01	122.83	1,494.07	-106.53	187.14	-181.95	0.51	0.10	2.06	
1,610.00	14.05	124.72	1,586.23	-119.33	206.28	-200.47	0.48	0.04	1.99	
1,705.00	13.96	126.84	1,678.41	-132.77	224.93	-218.47	0.55	-0.09	2.23	
1,799.00	13.61	128.29	1,769.70	-146.42	242.68	-235.57	0.52	-0.37	1.54	
1,894.00	13.57	129.22	1,862.04	-160.39	260.09	-252.30	0.23	-0.04	0.98	
1,988.00	12.95	127.41	1,953.54	-173.77	277.00	-268.57	0.79	-0.66	-1.93	
2,083.00	13.70	126.88	2,045.98	-186.98	294.45	-285.38	0.80	0.79	-0.56	
2,178.00	12.59	128.47	2,138.49	-200.18	311.56	-301.85	1.23	-1.17	1.67	
2,272.00	12.59	127.76	2,230.23	-212.82	327.68	-317.36	0.16	0.00	-0.76	
2,367.00	12.33	128.69	2,322.99	-225.50	343.78	-332.86	0.35	-0.27	0.98	
2,461.00	11.67	129.30	2,414.93	-237.80	358.97	-347.46	0.71	-0.70	0.65	
2,556.00	11.05	129.96	2,508.07	-249.73	373.39	-361.29	0.67	-0.65	0.69	
2,651.00	10.08	129.48	2,601.46	-260.87	386.78	-374.15	1.03	-1.02	-0.51	
2,745.00	11.14	125.43	2,693.85	-271.36	400.53	-387.40	1.38	1.13	-4.31	
2,839.00	11.27	121.68	2,786.06	-281.45	415.75	-402.12	0.79	0.14	-3.99	
2,934.00	12.77	118.42	2,878.98	-291.32	432.88	-418.78	1.73	1.58	-3.43	
3,029.00	12.90	117.18	2,971.61	-301.16	451.55	-436.97	0.32	0.14	-1.31	
3,124.00	11.62	117.32	3,064.44	-310.40	469.48	-454.45	1.35	-1.35	0.15	
3,218.00	10.91	116.30	3,156.63	-318.68	485.87	-470.43	0.78	-0.76	-1.09	
3,312.00	9.85	114.67	3,249.09	-325.98	501.15	-485.35	1.17	-1.13	-1.73	
3,404.00	8.84	115.25	3,339.86	-332.28	514.70	-498.59	1.10	-1.10	0.63	
3,472.00	7.97	116.19	3,407.13	-336.59	523.66	-507.33	1.29	-1.27	1.38	
SURFACE CSG - 3472' MD, 3407' TVD										
3,575.00	6.67	118.07	3,509.29	-342.56	535.35	-518.73	1.29	-1.27	1.83	
3,670.00	7.87	116.04	3,603.53	-348.01	546.06	-529.18	1.29	1.26	-2.14	
3,764.00	10.03	120.75	3,696.38	-355.02	558.88	-541.66	2.42	2.30	5.01	
3,859.00	12.15	122.56	3,789.60	-364.64	574.41	-556.73	2.26	2.23	1.91	
3,953.00	13.70	122.65	3,881.21	-375.97	592.13	-573.89	1.65	1.65	0.10	
4,048.00	12.33	121.42	3,973.77	-387.32	610.25	-591.47	1.47	-1.44	-1.29	
4,142.00	13.30	122.30	4,065.43	-398.33	627.96	-608.64	1.05	1.03	0.94	
4,237.00	15.20	124.54	4,157.50	-411.24	647.46	-627.51	2.08	2.00	2.36	
4,331.00	14.54	125.21	4,248.35	-425.03	667.25	-646.63	0.73	-0.70	0.71	
4,426.00	15.02	120.09	4,340.21	-438.07	687.64	-666.39	1.46	0.51	-5.39	
4,521.00	13.74	120.67	4,432.24	-450.00	708.00	-686.17	1.36	-1.35	0.61	
4,615.00	15.02	119.30	4,523.29	-461.66	728.22	-705.83	1.41	1.36	-1.46	
4,710.00	14.23	119.34	4,615.21	-473.40	749.14	-726.17	0.83	-0.83	0.04	

Civitas Resources

Survey Report

Company:	CRESTONE PEAK RESOURCES	Local Co-ordinate Reference:	Well STATE LA PLATA 5-65 13-14-15-16 4BH - AS BUILT
Project:	ARAPAHOE COUNTY	TVD Reference:	KB 25' @ 5922.00usft
Site:	SEC 13-T5S-R65W	MD Reference:	KB 25' @ 5922.00usft
Well:	STATE LA PLATA 5-65 13-14-15-16 4BH - AS BUILT	North Reference:	True
Wellbore:	OWB	Survey Calculation Method:	Minimum Curvature
Design:	FINAL	Database:	EDM

Survey										
Measured Depth (usft)	Inclination (°)	Azimuth (°)	Vertical Depth (usft)	+N/-S (usft)	+E/-W (usft)	Vertical Section (usft)	Dogleg Rate (°/100ft)	Build Rate (°/100ft)	Turn Rate (°/100ft)	
4,804.00	13.12	120.84	4,706.54	-484.53	768.37	-744.86	1.24	-1.18	1.60	
4,899.00	13.92	121.28	4,798.91	-495.99	787.39	-763.33	0.85	0.84	0.46	
4,994.00	12.46	121.64	4,891.40	-507.30	805.89	-781.27	1.54	-1.54	0.38	
5,088.00	14.05	125.03	4,982.90	-519.17	823.86	-798.67	1.88	1.69	3.61	
5,183.00	12.37	124.94	5,075.38	-531.62	841.65	-815.86	1.77	-1.77	-0.09	
5,277.00	14.18	121.59	5,166.87	-543.42	859.71	-833.35	2.09	1.93	-3.56	
5,372.00	11.98	117.67	5,259.40	-554.10	878.36	-851.47	2.50	-2.32	-4.13	
5,466.00	11.49	117.27	5,351.43	-562.92	895.32	-868.00	0.53	-0.52	-0.43	
5,561.00	14.10	122.12	5,444.07	-573.41	913.54	-885.71	2.97	2.75	5.11	
5,656.00	16.70	123.27	5,535.65	-587.05	934.75	-906.26	2.76	2.74	1.21	
5,750.00	16.88	122.56	5,625.64	-601.80	957.55	-928.34	0.29	0.19	-0.76	
5,844.00	15.91	122.96	5,715.82	-616.16	979.86	-949.96	1.04	-1.03	0.43	
5,939.00	14.85	121.33	5,807.42	-629.57	1,001.18	-970.63	1.20	-1.12	-1.72	
6,033.00	13.48	120.62	5,898.56	-641.42	1,020.90	-989.78	1.47	-1.46	-0.76	
6,128.00	13.83	126.00	5,990.87	-653.73	1,039.62	-1,007.89	1.39	0.37	5.66	
6,223.00	12.68	127.94	6,083.34	-666.81	1,057.03	-1,024.67	1.30	-1.21	2.04	
6,317.00	13.88	126.66	6,174.83	-679.89	1,074.21	-1,041.22	1.31	1.28	-1.36	
6,412.00	13.04	126.22	6,267.22	-693.03	1,092.00	-1,058.38	0.89	-0.88	-0.46	
6,506.00	14.05	126.39	6,358.60	-706.06	1,109.74	-1,075.49	1.08	1.07	0.18	
6,601.00	13.61	128.20	6,450.85	-719.82	1,127.80	-1,092.89	0.65	-0.46	1.91	
6,695.00	13.83	120.67	6,542.17	-732.39	1,146.16	-1,110.64	1.91	0.23	-8.01	
6,790.00	15.55	125.60	6,634.07	-745.59	1,166.28	-1,130.12	2.24	1.81	5.19	
6,884.00	14.45	127.81	6,724.86	-760.12	1,185.79	-1,148.93	1.32	-1.17	2.35	
6,979.00	14.98	124.28	6,816.75	-774.30	1,205.30	-1,167.76	1.10	0.56	-3.72	
7,074.00	13.48	124.90	6,908.83	-787.55	1,224.53	-1,186.34	1.59	-1.58	0.65	
7,169.00	13.65	129.74	7,001.18	-801.05	1,242.23	-1,203.39	1.21	0.18	5.09	
7,264.00	12.51	127.67	7,093.72	-814.51	1,259.00	-1,219.51	1.30	-1.20	-2.18	
7,300.00	10.58	135.48	7,128.99	-819.25	1,264.40	-1,224.69	6.88	-5.35	21.70	
KOP - 7300' MD, 7129' TVD										
7,359.00	8.09	155.52	7,187.22	-826.89	1,269.92	-1,229.85	6.88	-4.22	33.96	
7,453.00	12.37	202.06	7,279.85	-842.28	1,268.88	-1,228.08	9.53	4.55	49.51	
7,548.00	20.24	232.86	7,371.12	-861.69	1,251.90	-1,210.22	12.04	8.28	32.42	
7,642.00	22.32	248.55	7,458.77	-878.05	1,222.30	-1,179.88	6.43	2.21	16.69	
7,736.00	25.90	254.45	7,544.57	-890.09	1,185.89	-1,142.95	4.59	3.81	6.28	
7,831.00	34.56	261.55	7,626.60	-899.63	1,139.15	-1,095.81	9.85	9.12	7.47	
7,925.00	36.94	263.58	7,702.89	-906.71	1,084.70	-1,041.09	2.83	2.53	2.16	
8,020.00	48.56	263.93	7,772.53	-913.69	1,020.70	-976.83	12.23	12.23	0.37	
8,115.00	58.06	268.12	7,829.24	-918.79	944.81	-900.79	10.60	10.00	4.41	
8,209.00	67.34	266.57	7,872.31	-922.70	861.47	-817.35	9.98	9.87	-1.65	
8,304.00	76.32	266.31	7,901.90	-928.31	771.47	-727.19	9.46	9.45	-0.27	
8,339.57	79.23	266.72	7,909.44	-930.42	736.77	-692.44	8.25	8.17	1.14	
-2475' X-OVER PNT - 8339.57' MD, 7909' TVD, 465' FSL, 2475' FWL SEC 13										

Civitas Resources

Survey Report

Company:	CRESTONE PEAK RESOURCES	Local Co-ordinate Reference:	Well STATE LA PLATA 5-65 13-14-15-16 4BH - AS BUILT
Project:	ARAPAHOE COUNTY	TVD Reference:	KB 25' @ 5922.00usft
Site:	SEC 13-T5S-R65W	MD Reference:	KB 25' @ 5922.00usft
Well:	STATE LA PLATA 5-65 13-14-15-16 4BH - AS BUILT	North Reference:	True
Wellbore:	OWB	Survey Calculation Method:	Minimum Curvature
Design:	FINAL	Database:	EDM

Survey										
Measured Depth (usft)	Inclination (°)	Azimuth (°)	Vertical Depth (usft)	+N/-S (usft)	+E/-W (usft)	Vertical Section (usft)	Dogleg Rate (°/100ft)	Build Rate (°/100ft)	Turn Rate (°/100ft)	
8,398.00	84.00	267.37	7,917.96	-933.40	679.06	-634.65	8.25	8.17	1.12	
8,469.00	88.86	269.51	7,922.38	-935.32	608.25	-563.83	7.47	6.84	3.01	
HZ LANDING PNT - 8469' MD, 7922' TVD										
8,493.00	90.50	270.23	7,922.51	-935.38	584.25	-539.85	7.47	6.84	3.00	
8,588.00	90.81	269.83	7,921.43	-935.33	489.26	-444.96	0.53	0.33	-0.42	
8,683.00	91.56	270.23	7,919.46	-935.28	394.28	-350.09	0.89	0.79	0.42	
8,777.00	91.30	270.01	7,917.12	-935.08	300.31	-256.23	0.36	-0.28	-0.23	
8,872.00	89.75	270.80	7,916.25	-934.41	205.32	-161.38	1.83	-1.63	0.83	
8,967.00	90.81	271.73	7,915.78	-932.31	110.35	-66.61	1.48	1.12	0.98	
9,061.00	88.64	270.32	7,916.23	-930.63	16.37	27.19	2.75	-2.31	-1.50	
9,156.00	90.06	271.99	7,917.31	-928.72	-78.60	121.96	2.31	1.49	1.76	
9,250.00	88.82	271.02	7,918.23	-926.25	-172.56	215.70	1.67	-1.32	-1.03	
9,440.00	87.98	270.19	7,923.53	-924.24	-362.47	405.31	0.62	-0.44	-0.44	
9,534.00	87.45	270.10	7,927.28	-924.01	-456.39	499.12	0.57	-0.56	-0.10	
9,724.00	88.33	269.48	7,934.28	-924.70	-646.26	688.82	0.57	0.46	-0.33	
9,819.00	88.20	270.01	7,937.15	-925.12	-741.22	783.69	0.57	-0.14	0.56	
9,913.00	89.00	269.26	7,939.45	-925.72	-835.18	877.58	1.17	0.85	-0.80	
10,007.00	89.13	269.31	7,940.98	-926.90	-929.16	971.51	0.15	0.14	0.05	
10,102.00	88.82	268.42	7,942.68	-928.78	-1,024.13	1,066.46	0.99	-0.33	-0.94	
10,197.00	88.91	268.51	7,944.57	-931.32	-1,119.08	1,161.42	0.13	0.09	0.09	
10,291.00	89.17	269.35	7,946.14	-933.08	-1,213.05	1,255.37	0.94	0.28	0.89	
10,386.00	89.53	269.66	7,947.22	-933.90	-1,308.04	1,350.30	0.50	0.38	0.33	
10,480.00	89.26	269.26	7,948.21	-934.78	-1,402.03	1,444.23	0.51	-0.29	-0.43	
10,575.00	89.53	268.95	7,949.21	-936.27	-1,497.01	1,539.17	0.43	0.28	-0.33	
10,670.00	89.66	268.07	7,949.89	-938.74	-1,591.97	1,634.15	0.94	0.14	-0.93	
10,764.00	90.10	269.48	7,950.08	-940.75	-1,685.95	1,728.12	1.57	0.47	1.50	
10,858.00	90.37	269.44	7,949.70	-941.63	-1,779.94	1,822.05	0.29	0.29	-0.04	
10,953.00	90.63	269.70	7,948.87	-942.35	-1,874.94	1,916.97	0.39	0.27	0.27	
11,142.00	90.01	270.54	7,947.81	-941.95	-2,063.93	2,105.74	0.55	-0.33	0.44	
11,237.00	90.06	270.58	7,947.75	-941.02	-2,158.93	2,200.59	0.07	0.05	0.04	
11,331.00	90.06	270.32	7,947.66	-940.28	-2,252.92	2,294.45	0.28	0.00	-0.28	
11,426.00	90.37	270.23	7,947.30	-939.83	-2,347.92	2,389.32	0.34	0.33	-0.09	
11,520.00	90.23	270.72	7,946.81	-939.05	-2,441.92	2,483.18	0.54	-0.15	0.52	
11,615.00	90.19	270.58	7,946.46	-937.97	-2,536.91	2,578.02	0.15	-0.04	-0.15	
11,709.00	88.73	271.55	7,947.34	-936.22	-2,630.89	2,671.81	1.86	-1.55	1.03	
11,804.00	88.91	271.95	7,949.30	-933.32	-2,725.82	2,766.50	0.46	0.19	0.42	
11,899.00	89.26	271.69	7,950.82	-930.31	-2,820.76	2,861.20	0.46	0.37	-0.27	
11,993.00	89.62	271.91	7,951.74	-927.35	-2,914.71	2,954.91	0.45	0.38	0.23	
12,088.00	88.03	271.51	7,953.68	-924.52	-3,009.65	3,049.60	1.73	-1.67	-0.42	
12,183.00	88.07	271.86	7,956.92	-921.73	-3,104.55	3,144.27	0.37	0.04	0.37	
12,277.00	88.16	271.82	7,960.01	-918.71	-3,198.45	3,237.93	0.10	0.10	-0.04	
12,372.00	87.85	271.99	7,963.32	-915.55	-3,293.34	3,332.57	0.37	-0.33	0.18	

Civitas Resources

Survey Report

Company:	CRESTONE PEAK RESOURCES	Local Co-ordinate Reference:	Well STATE LA PLATA 5-65 13-14-15-16 4BH - AS BUILT
Project:	ARAPAHOE COUNTY	TVD Reference:	KB 25' @ 5922.00usft
Site:	SEC 13-T5S-R65W	MD Reference:	KB 25' @ 5922.00usft
Well:	STATE LA PLATA 5-65 13-14-15-16 4BH - AS BUILT	North Reference:	True
Wellbore:	OWB	Survey Calculation Method:	Minimum Curvature
Design:	FINAL	Database:	EDM

Survey										
Measured Depth (usft)	Inclination (°)	Azimuth (°)	Vertical Depth (usft)	+N/-S (usft)	+E/-W (usft)	Vertical Section (usft)	Dogleg Rate (°/100ft)	Build Rate (°/100ft)	Turn Rate (°/100ft)	
12,467.00	87.50	272.17	7,967.17	-912.11	-3,388.20	3,427.16	0.41	-0.37	0.19	
12,561.00	87.72	272.35	7,971.09	-908.41	-3,482.04	3,520.73	0.30	0.23	0.19	
12,656.00	86.96	272.26	7,975.50	-904.59	-3,576.86	3,615.27	0.81	-0.80	-0.09	
12,751.00	88.91	271.91	7,978.92	-901.14	-3,671.74	3,709.87	2.09	2.05	-0.37	
12,844.00	88.86	272.39	7,980.73	-897.65	-3,764.65	3,802.53	0.52	-0.05	0.52	
12,938.00	89.79	269.53	7,981.84	-896.07	-3,858.62	3,896.32	3.20	0.99	-3.04	
13,127.00	88.29	270.67	7,985.01	-895.74	-4,047.59	4,085.06	1.00	-0.79	0.60	
13,222.00	89.97	269.48	7,986.45	-895.62	-4,142.57	4,179.94	2.17	1.77	-1.25	
13,316.00	90.54	269.53	7,986.03	-896.43	-4,236.57	4,273.87	0.61	0.61	0.05	
13,411.00	90.46	269.57	7,985.20	-897.18	-4,331.56	4,368.79	0.09	-0.08	0.04	
13,600.00	89.48	269.70	7,985.30	-898.38	-4,520.55	4,557.63	0.52	-0.52	0.07	
13,694.00	89.13	269.17	7,986.44	-899.31	-4,614.54	4,651.56	0.68	-0.37	-0.56	
13,789.00	89.04	269.04	7,987.96	-900.79	-4,709.52	4,746.50	0.17	-0.09	-0.14	
13,883.00	88.69	268.82	7,989.82	-902.55	-4,803.48	4,840.45	0.44	-0.37	-0.23	
14,072.00	89.93	268.73	7,992.10	-906.59	-4,992.42	5,029.37	0.66	0.66	-0.05	
14,166.00	90.01	268.91	7,992.14	-908.52	-5,086.40	5,123.34	0.21	0.09	0.19	
14,260.00	89.93	268.16	7,992.19	-910.93	-5,180.37	5,217.32	0.80	-0.09	-0.80	
14,355.00	89.62	267.23	7,992.57	-914.75	-5,275.29	5,312.31	1.03	-0.33	-0.98	
14,449.00	89.97	267.81	7,992.90	-918.81	-5,369.20	5,406.31	0.72	0.37	0.62	
14,543.00	89.62	267.32	7,993.24	-922.81	-5,463.12	5,500.31	0.64	-0.37	-0.52	
14,638.00	89.66	267.85	7,993.84	-926.81	-5,558.03	5,595.30	0.56	0.04	0.56	
14,733.00	89.66	269.79	7,994.40	-928.77	-5,653.00	5,690.27	2.04	0.00	2.04	
14,922.00	90.28	269.44	7,994.50	-930.04	-5,842.00	5,879.11	0.38	0.33	-0.19	
15,028.00	90.59	268.82	7,993.69	-931.65	-5,947.98	5,985.06	0.65	0.29	-0.58	
15,122.00	89.79	269.70	7,993.38	-932.86	-6,041.97	6,079.00	1.27	-0.85	0.94	
15,216.00	89.88	270.80	7,993.65	-932.45	-6,135.97	6,172.87	1.17	0.10	1.17	
15,311.00	90.01	270.58	7,993.74	-931.31	-6,230.96	6,267.71	0.27	0.14	-0.23	
15,405.00	90.46	269.66	7,993.36	-931.11	-6,324.96	6,361.60	1.09	0.48	-0.98	
15,500.00	89.31	271.77	7,993.55	-929.92	-6,419.94	6,456.42	2.53	-1.21	2.22	
15,594.00	89.53	271.55	7,994.50	-927.20	-6,513.90	6,550.15	0.33	0.23	-0.23	
15,689.00	89.88	271.24	7,994.99	-924.89	-6,608.87	6,644.91	0.49	0.37	-0.33	
15,878.00	89.70	270.80	7,995.68	-921.52	-6,797.84	6,833.51	0.25	-0.10	-0.23	
15,972.00	88.29	270.05	7,997.33	-920.83	-6,891.82	6,927.35	1.70	-1.50	-0.80	
16,067.00	87.80	270.63	8,000.57	-920.26	-6,986.76	7,022.17	0.80	-0.52	0.61	
16,162.00	86.79	270.94	8,005.06	-918.96	-7,081.65	7,116.88	1.11	-1.06	0.33	
16,256.00	84.80	270.85	8,011.95	-917.50	-7,175.38	7,210.44	2.12	-2.12	-0.10	
16,350.00	85.68	271.91	8,019.75	-915.24	-7,269.02	7,303.88	1.46	0.94	1.13	
16,445.00	90.06	271.99	8,023.28	-912.01	-7,363.88	7,398.48	4.61	4.61	0.08	
16,539.00	89.75	272.35	8,023.43	-908.45	-7,457.81	7,492.15	0.51	-0.33	0.38	
16,634.00	89.57	269.97	8,024.00	-906.53	-7,552.78	7,586.92	2.51	-0.19	-2.51	
16,729.00	89.97	270.85	8,024.38	-905.85	-7,647.78	7,681.78	1.02	0.42	0.93	
16,823.00	89.75	270.36	8,024.61	-904.86	-7,741.77	7,775.63	0.57	-0.23	-0.52	
16,918.00	89.44	270.41	8,025.28	-904.22	-7,836.77	7,870.49	0.33	-0.33	0.05	

Civitas Resources

Survey Report

Company:	CRESTONE PEAK RESOURCES	Local Co-ordinate Reference:	Well STATE LA PLATA 5-65 13-14-15-16 4BH - AS BUILT
Project:	ARAPAHOE COUNTY	TVD Reference:	KB 25' @ 5922.00usft
Site:	SEC 13-T5S-R65W	MD Reference:	KB 25' @ 5922.00usft
Well:	STATE LA PLATA 5-65 13-14-15-16 4BH - AS BUILT	North Reference:	True
Wellbore:	OWB	Survey Calculation Method:	Minimum Curvature
Design:	FINAL	Database:	EDM

Survey										
Measured Depth (usft)	Inclination (°)	Azimuth (°)	Vertical Depth (usft)	+N/-S (usft)	+E/-W (usft)	Vertical Section (usft)	Dogleg Rate (°/100ft)	Build Rate (°/100ft)	Turn Rate (°/100ft)	
17,012.00	89.22	270.85	8,026.38	-903.19	-7,930.76	7,964.33	0.52	-0.23	0.47	
17,107.00	88.82	269.75	8,028.01	-902.69	-8,025.74	8,059.18	1.23	-0.42	-1.16	
17,201.00	90.23	269.22	8,028.78	-903.53	-8,119.73	8,153.11	1.60	1.50	-0.56	
17,295.00	89.84	269.04	8,028.73	-904.96	-8,213.72	8,247.06	0.46	-0.41	-0.19	
17,390.00	89.48	269.22	8,029.29	-906.40	-8,308.71	8,342.01	0.42	-0.38	0.19	
17,485.00	88.82	268.82	8,030.70	-908.03	-8,403.68	8,436.96	0.81	-0.69	-0.42	
17,579.00	89.04	269.53	8,032.46	-909.38	-8,497.65	8,530.89	0.79	0.23	0.76	
17,674.00	88.60	269.70	8,034.41	-910.02	-8,592.63	8,625.80	0.50	-0.46	0.18	
17,768.00	87.89	269.70	8,037.27	-910.51	-8,686.58	8,719.67	0.76	-0.76	0.00	
17,863.00	90.10	268.82	8,038.96	-911.74	-8,781.56	8,814.60	2.50	2.33	-0.93	
17,957.00	90.32	270.23	8,038.61	-912.52	-8,875.55	8,908.52	1.52	0.23	1.50	
18,052.00	89.31	269.17	8,038.92	-913.01	-8,970.54	9,003.44	1.54	-1.06	-1.12	
18,147.00	89.40	270.01	8,039.99	-913.69	-9,065.54	9,098.36	0.89	0.09	0.88	
18,242.00	88.86	268.64	8,041.43	-914.81	-9,160.52	9,193.28	1.55	-0.57	-1.44	
18,336.00	88.78	268.42	8,043.37	-917.22	-9,254.46	9,287.24	0.25	-0.09	-0.23	
18,430.00	88.29	270.50	8,045.77	-918.11	-9,348.42	9,381.14	2.27	-0.52	2.21	
18,524.00	86.92	270.98	8,049.70	-916.90	-9,442.33	9,474.89	1.54	-1.46	0.51	
18,619.00	88.73	272.26	8,053.30	-914.21	-9,537.22	9,569.55	2.33	1.91	1.35	
18,713.00	87.36	274.15	8,056.51	-908.96	-9,631.01	9,662.99	2.48	-1.46	2.01	
18,808.00	89.44	273.18	8,059.16	-902.89	-9,725.77	9,757.37	2.42	2.19	-1.02	
18,902.00	92.49	270.50	8,057.58	-899.87	-9,819.69	9,851.04	4.32	3.24	-2.85	
18,997.00	92.53	270.67	8,053.42	-898.91	-9,914.60	9,945.79	0.18	0.04	0.18	
19,091.00	92.31	270.76	8,049.45	-897.73	-10,008.50	10,039.55	0.25	-0.23	0.10	
19,186.00	92.14	270.58	8,045.76	-896.62	-10,103.43	10,134.31	0.26	-0.18	-0.19	
19,280.00	92.14	270.89	8,042.25	-895.42	-10,197.35	10,228.08	0.33	0.00	0.33	
19,374.00	92.14	270.67	8,038.74	-894.14	-10,291.28	10,321.84	0.23	0.00	-0.23	
19,469.00	92.84	269.88	8,034.61	-893.68	-10,386.19	10,416.62	1.11	0.74	-0.83	
19,564.00	93.90	270.41	8,029.03	-893.44	-10,481.02	10,511.34	1.25	1.12	0.56	
19,658.00	92.14	271.73	8,024.08	-891.69	-10,574.87	10,605.01	2.34	-1.87	1.40	
19,752.00	89.17	271.33	8,023.00	-889.18	-10,668.82	10,698.74	3.19	-3.16	-0.43	
19,846.00	88.78	270.85	8,024.69	-887.39	-10,762.78	10,792.52	0.66	-0.41	-0.51	
19,940.00	88.91	269.97	8,026.58	-886.72	-10,856.76	10,886.36	0.95	0.14	-0.94	
20,034.00	89.09	269.35	8,028.22	-887.28	-10,950.75	10,980.27	0.69	0.19	-0.66	
20,128.00	89.70	271.64	8,029.21	-886.47	-11,044.73	11,074.11	2.52	0.65	2.44	
20,222.00	89.66	272.70	8,029.74	-882.91	-11,138.66	11,167.77	1.13	-0.04	1.13	
20,316.00	88.95	270.94	8,030.88	-879.92	-11,232.60	11,261.47	2.02	-0.76	-1.87	
20,411.00	88.86	271.42	8,032.69	-877.97	-11,327.56	11,356.24	0.51	-0.09	0.51	
20,505.00	88.07	270.85	8,035.21	-876.10	-11,421.51	11,449.99	1.04	-0.84	-0.61	
20,599.00	89.75	274.15	8,037.00	-872.01	-11,515.39	11,543.58	3.94	1.79	3.51	
20,693.00	88.78	273.18	8,038.21	-866.00	-11,609.19	11,636.99	1.46	-1.03	-1.03	
20,788.00	87.98	273.40	8,040.89	-860.55	-11,703.99	11,731.44	0.87	-0.84	0.23	
20,882.00	89.84	273.62	8,042.68	-854.79	-11,797.79	11,824.87	1.99	1.98	0.23	

Civitas Resources

Survey Report

Company:	CRESTONE PEAK RESOURCES	Local Co-ordinate Reference:	Well STATE LA PLATA 5-65 13-14-15-16 4BH - AS BUILT
Project:	ARAPAHOE COUNTY	TVD Reference:	KB 25' @ 5922.00usft
Site:	SEC 13-T5S-R65W	MD Reference:	KB 25' @ 5922.00usft
Well:	STATE LA PLATA 5-65 13-14-15-16 4BH - AS BUILT	North Reference:	True
Wellbore:	OWB	Survey Calculation Method:	Minimum Curvature
Design:	FINAL	Database:	EDM

Survey										
Measured Depth (usft)	Inclination (°)	Azimuth (°)	Vertical Depth (usft)	+N/-S (usft)	+E/-W (usft)	Vertical Section (usft)	Dogleg Rate (°/100ft)	Build Rate (°/100ft)	Turn Rate (°/100ft)	
20,976.00	89.22	274.81	8,043.45	-847.89	-11,891.53	11,918.18	1.43	-0.66	1.27	
21,070.00	90.41	274.64	8,043.75	-840.14	-11,985.21	12,011.39	1.28	1.27	-0.18	
21,164.00	90.37	274.37	8,043.11	-832.76	-12,078.92	12,104.65	0.29	-0.04	-0.29	
21,259.00	89.88	272.79	8,042.91	-826.83	-12,173.73	12,199.08	1.74	-0.52	-1.66	
21,352.00	89.70	272.35	8,043.25	-822.66	-12,266.64	12,291.69	0.51	-0.19	-0.47	
21,446.00	90.23	273.76	8,043.31	-817.65	-12,360.50	12,385.22	1.60	0.56	1.50	
21,540.00	90.72	270.67	8,042.53	-814.02	-12,454.41	12,478.86	3.33	0.52	-3.29	
21,635.00	90.85	270.36	8,041.22	-813.16	-12,549.40	12,573.70	0.35	0.14	-0.33	
21,729.00	90.81	270.41	8,039.86	-812.53	-12,643.39	12,667.56	0.07	-0.04	0.05	
21,823.00	90.90	269.66	8,038.46	-812.47	-12,737.38	12,761.44	0.80	0.10	-0.80	
21,917.00	90.94	270.94	8,036.95	-811.98	-12,831.36	12,855.30	1.36	0.04	1.36	
22,011.00	90.68	270.98	8,035.62	-810.41	-12,925.34	12,949.10	0.28	-0.28	0.04	
22,105.00	90.32	270.14	8,034.80	-809.49	-13,019.33	13,042.95	0.97	-0.38	-0.89	
22,199.00	89.75	269.83	8,034.74	-809.51	-13,113.33	13,136.84	0.69	-0.61	-0.33	
22,293.00	89.44	270.89	8,035.41	-808.92	-13,207.32	13,230.71	1.17	-0.33	1.13	
22,387.00	88.60	270.98	8,037.02	-807.39	-13,301.30	13,324.51	0.90	-0.89	0.10	
22,481.00	90.41	270.41	8,037.83	-806.25	-13,395.28	13,418.34	2.02	1.93	-0.61	
22,575.00	90.50	271.02	8,037.08	-805.07	-13,489.27	13,512.17	0.66	0.10	0.65	
22,670.00	89.97	271.73	8,036.69	-802.79	-13,584.24	13,606.93	0.93	-0.56	0.75	
22,764.00	89.93	272.21	8,036.77	-799.56	-13,678.19	13,700.62	0.51	-0.04	0.51	
22,858.00	90.01	272.43	8,036.82	-795.76	-13,772.11	13,794.26	0.25	0.09	0.23	
22,953.00	89.53	273.58	8,037.21	-790.78	-13,866.98	13,888.79	1.31	-0.51	1.21	
23,047.00	89.48	274.29	8,038.02	-784.33	-13,960.75	13,982.16	0.76	-0.05	0.76	
23,141.00	89.66	274.95	8,038.72	-776.76	-14,054.44	14,075.39	0.73	0.19	0.70	
23,235.00	89.04	271.69	8,039.79	-771.31	-14,148.27	14,168.86	3.53	-0.66	-3.47	
23,330.00	88.91	271.42	8,041.49	-768.74	-14,243.22	14,263.58	0.32	-0.14	-0.28	
23,424.00	88.42	270.67	8,043.68	-767.02	-14,337.17	14,357.36	0.95	-0.52	-0.80	
23,518.00	87.80	270.67	8,046.78	-765.92	-14,431.12	14,451.15	0.66	-0.66	0.00	
23,612.00	87.19	271.51	8,050.89	-764.14	-14,525.01	14,544.85	1.10	-0.65	0.89	
23,706.00	89.84	269.09	8,053.32	-763.65	-14,618.96	14,638.68	3.82	2.82	-2.57	
23,800.00	90.01	270.41	8,053.45	-764.06	-14,712.96	14,732.59	1.42	0.18	1.40	
23,894.00	88.73	267.72	8,054.48	-765.59	-14,806.93	14,826.53	3.17	-1.36	-2.86	
23,988.00	88.95	270.32	8,056.38	-767.20	-14,900.89	14,920.46	2.78	0.23	2.77	
24,083.00	89.62	272.04	8,057.57	-765.24	-14,995.85	15,015.24	1.94	0.71	1.81	
24,176.00	89.62	271.55	8,058.19	-762.33	-15,088.81	15,107.95	0.53	0.00	-0.53	
24,271.00	89.35	270.36	8,059.04	-760.74	-15,183.79	15,202.75	1.28	-0.28	-1.25	
24,365.00	89.26	270.10	8,060.18	-760.37	-15,277.78	15,296.62	0.29	-0.10	-0.28	
24,458.00	89.04	270.01	8,061.56	-760.28	-15,370.77	15,389.51	0.26	-0.24	-0.10	
24,552.00	88.73	269.61	8,063.39	-760.59	-15,464.75	15,483.40	0.54	-0.33	-0.43	
24,646.00	88.11	269.61	8,065.98	-761.23	-15,558.71	15,577.29	0.66	-0.66	0.00	
24,740.00	89.97	271.86	8,067.56	-760.02	-15,652.68	15,671.10	3.11	1.98	2.39	
24,834.00	89.84	272.65	8,067.71	-756.32	-15,746.61	15,764.75	0.85	-0.14	0.84	
24,928.00	89.00	272.21	8,068.66	-752.34	-15,840.52	15,858.37	1.01	-0.89	-0.47	

Civitas Resources

Survey Report

Company:	CRESTONE PEAK RESOURCES	Local Co-ordinate Reference:	Well STATE LA PLATA 5-65 13-14-15-16 4BH - AS BUILT
Project:	ARAPAHOE COUNTY	TVD Reference:	KB 25' @ 5922.00usft
Site:	SEC 13-T5S-R65W	MD Reference:	KB 25' @ 5922.00usft
Well:	STATE LA PLATA 5-65 13-14-15-16 4BH - AS BUILT	North Reference:	True
Wellbore:	OWB	Survey Calculation Method:	Minimum Curvature
Design:	FINAL	Database:	EDM

Survey	Measured Depth (usft)	Inclination (°)	Azimuth (°)	Vertical Depth (usft)	+N/-S (usft)	+E/-W (usft)	Vertical Section (usft)	Dogleg Rate (°/100ft)	Build Rate (°/100ft)	Turn Rate (°/100ft)
LAST SURVEY - 24928' MD, 8069' TVD										
	25,050.00	89.00	272.21	8,070.79	-747.64	-15,962.41	15,979.91	0.00	0.00	0.00
PTB - 25050' MD, 8071' TVD, 620' FSL, 1651' FWL SEC 16										

Design Targets	Target Name	- hit/miss target	- Shape	Dip Angle (°)	Dip Dir. (°)	TVD (usft)	+N/-S (usft)	+E/-W (usft)	Northing (usft)	Easting (usft)	Latitude	Longitude
	LP-ST. LA PLATA 4BH (I			0.00	0.00	7,920.00	-995.51	736.77	1,648,458.84	3,249,606.91	39.610469°N	104.614043°W
	- actual wellpath misses target center by 65.71usft at 8344.43usft MD (7910.33 TVD, -930.69 N, 732.00 E)											
	PBHL-ST. LA PLATA 4B			0.00	0.00	8,030.00	-787.22	-15,963.00	1,648,504.73	3,232,906.30	39.611027°N	104.673316°W
	- actual wellpath misses target center by 56.82usft at 25048.36usft MD (8070.76 TVD, -747.70 N, -15960.77 E)											

Design Annotations	Measured Depth (usft)	Vertical Depth (usft)	Local Coordinates		Comment
			+N/-S (usft)	+E/-W (usft)	
	3,472.00	3,407.13	-336.59	523.66	SURFACE CSG - 3472' MD, 3407' TVD
	7,300.00	7,128.99	-819.25	1,264.40	KOP - 7300' MD, 7129' TVD
	8,339.57	7,909.44	-930.42	736.77	~2475' X-OVER PNT - 8339.57' MD, 7909' TVD, 465' FSL, 2475' FWL SEC 13
	8,469.00	7,922.38	-935.32	608.25	HZ LANDING PNT - 8469' MD, 7922' TVD
	24,928.00	8,068.66	-752.34	-15,840.52	LAST SURVEY - 24928' MD, 8069' TVD
	25,050.00	8,070.79	-747.64	-15,962.41	PTB - 25050' MD, 8071' TVD, 620' FSL, 1651' FWL SEC 16

Checked By: _____ Approved By: _____ Date: _____