

# Chevron Rockies Business Unit

## Field Qualitative Criteria for ECMC Reporting Associated with the Discovery of Potentially Impacted Material

If answered **Yes** to any of the questions listed below, this may suggest the presence of potentially impacted materials as outlined in ECMC Rule 912. Out of an abundance of caution, a “Yes” response will be reported to the ECMC within 24 hours after discovery, regardless of laboratory results. **Immediately notify the RBU Remediation Team.** Include a copy of this Field Qualitative Spill Criteria Checklist in the field Report.

Please answer the following questions when on-site:

1. Is there visible petroleum hydrocarbon staining in the soil?  
Yes
2. Does the soil sample from the stained area have a petroleum odor?  
Yes
3. Is there a petroleum hydrocarbon sheen on the nearby surface water?  
No
4. Does there appear to be a sheen of the surface of accumulated groundwater or seeps within the excavation indicative of petroleum?  
No
5. Is stained soil in contact with groundwater?  
No

Please Include relevant photos of the site conditions for items 1-5.

Location name: Weidenkeller 64N65W 1NWNW

Please Circle Facility Type: Tank Battery

### Form 19 Information Summary

Site Name	Weidenkeller 64N65W 1NWNW
API #	N/A
REM #	34496
Facility ID	328364
Coordinates	40.347261, -104.620498 (SEP01-DL01-SB@2') 40.347261, -104.620498 (SEP01-DL01-SB@4') 40.347316, -104.620498 (SB05@3') 40.347296, -104.620443 (SB06@3') 40.347261, -104.620569 (SB11@3') 40.347303, -104.620544 (SB12@2-2.5') 40.347303, -104.620544 (SB12@3')
S/T/R	NWNW 1/4N/65W
Cause of Release	Presumed production activities
Date of Discovery	12/30/2025
Spill Type	Historical
Land Use	Cropland
Weather Conditions	30's and Fair
Surface Water	Stream/River 187ft NE Lake/Pond 0.24mi ESE Riverine 0.17mi NE
Number of Water Wells within ½ Mile Radius	18
Distance to Closest Water Well	0.10 mi SE
Approximate Depth to Groundwater	>20ft below ground surface
Distance to Nearest Wetland	Freshwater Emergent Wetland 0.04mi E
Sensitive Area / Habitat	Freshwater Emergent Wetland 0.04mi E, 0.24mi SE Stream/River 187ft NE, Gilmore Ditch 0.15mi NE, Riverine 0.17mi NE, 0.24mi SE, Lake/Pond, 0.23 mi ESE Freshwater Pond 0.23mi ESE Farming Structure 0.04/0.06/0.08/0.17/0.18mi SSE, 0.15/0.27mi ENE, 0.21//0.24mi NE Livestock Structure 0.03 mi S, 0.23 mi NE Residential Structure 0.06mi S, 0.16mi S, 0.13/0.21.0,24mi NE
100 Year Floodplain	No
Release in Municipality	No
Fluid Released	Presumed production fluids
Volume of Release	Unknown

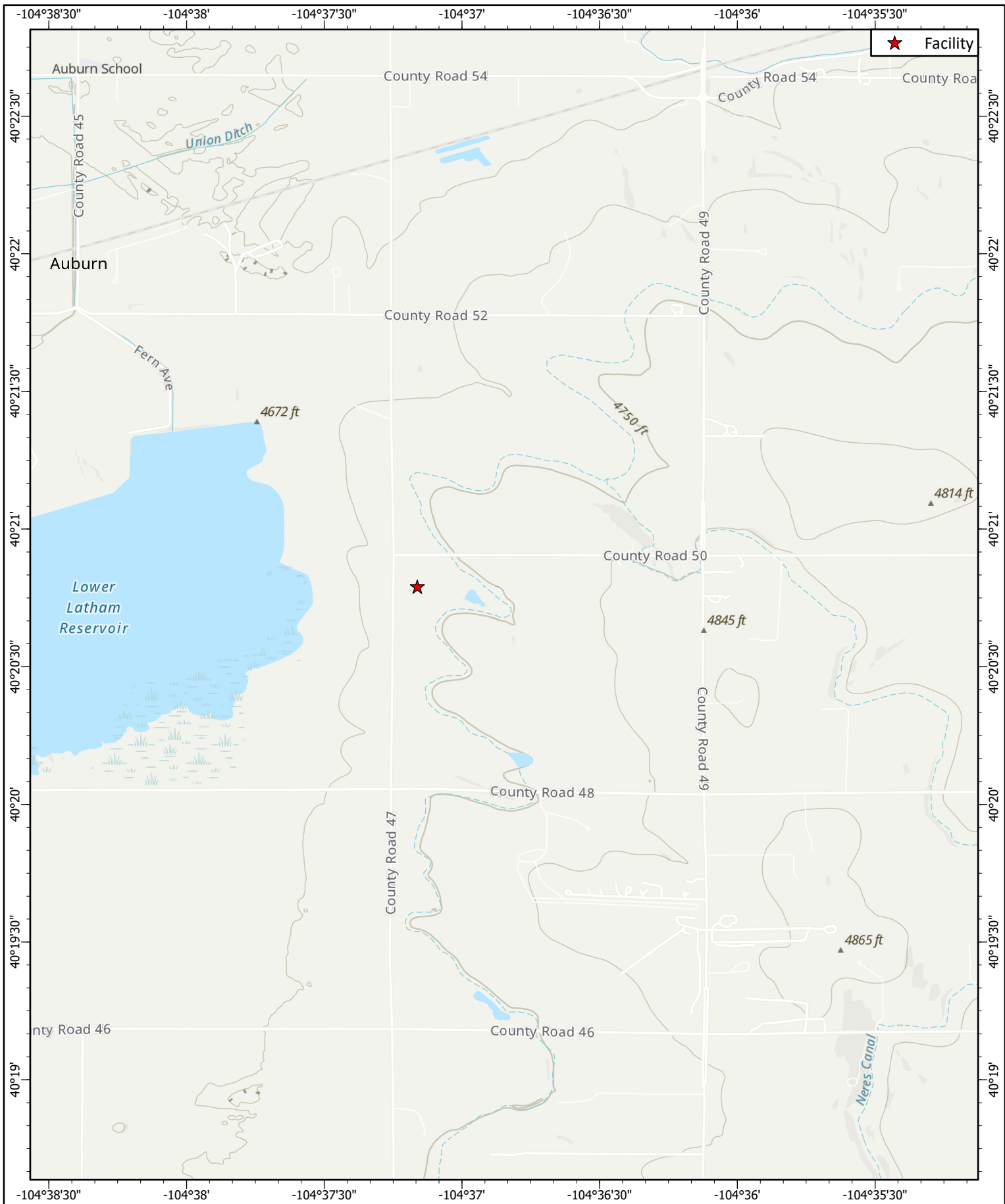
Livestock Present	No
Closest Building	Farming Structure 0.04mi SSE Livestock Structure 0.03mi S Residential Structure 0.06mi S
Soil Type(s)	SW
Disposal Facility	N/A
Excavation Dimensions	N/A

**Notes:**

On Tuesday, December 30, 2025, Montrose personnel mobilized to the Weidenkeller 64N65W 1NWNW location (40.346494, -104.619372) to collect soil samples as part of a Supplemental Site Investigation (SSI) to delineate inorganic exceedances identified at sample location SEP01-DL01@3', originally sampled on December 3, 2025 as part of previous decommissioning activities. The SSI conducted on December 30, 2025 was completed in accordance with the Supplemental Site Investigation Plan provided with Supplemental Form 27 Document #404076962.

Visibly stained soils were encountered during the SSI sampling activities completed on December 30, 2025. Visibly stained soil was observed at sampling location SEP01-DL01-SB (40.347261, -104.620498) from approximately 1.5 to four (4) feet below ground surface (bgs); at sampling location SB05 (40.347316, -104.620498) from approximately one (1) to three (3) feet bgs; at sampling location SB06 (40.347296, -104.620443) at approximately three (3) feet bgs; at sampling location SB11 (40.347261, -104.620569) from approximately 2.5 to three (3) feet bgs; and at sampling location SB12 (40.347303, -104.620544) from approximately 0.5 to three (3) feet bgs. The stained soils encountered at sampling locations SEP01-DL01-SB, SB05, SB06, and SB12 also exhibited petroleum odors.

As shown in Table 1 (Field Data Summary Table; attached), photoionization detector (PID) readings collected at these sampling locations ranged from 3.0 parts per million (ppm) to 2,103 ppm. Per Chevron guidance, soil samples were collected from SEP01-DL01-SB at depths of two (2) and four (4) feet bgs (SEP01-DL01-SB@2' and SEP01-DL01-SB@4'), from SB05 at a depth of three (3) feet bgs (SB05@3'), from SB06 at a depth of three (3) feet bgs (SB05@3'), from SB11 at a depth of three (3) feet bgs (SB11@3'), and from SB12 at depths of two (2) to 2.5 feet bgs, and three (3) feet bgs (SB12@2-2.5' and SB12@3'). These samples were submitted for the full ECMC Table 915-1 suite of analyses. Laboratory analyses are pending and will be submitted upon their receipt.



**MONTROSE ENVIRONMENTAL**

Montrose Environmental Group  
Date: 12/31/2025

Reviewed By: R. Bumgardner  
Author: D. Virilar-Knight

**Topographic Map of Weidenkeller 64N65W 1NWNW**

Noble-100322      Facility Number: 328364  
 NWNW/S1/T4N/R65W      REM Number: 34496  
 Weld County, Colorado      API Number: N/A

Figure 1

0 1,000 2,000 4,000  
Feet

Coord. Sys.: GCS North American 1983



**MONTROSE**  
ENVIRONMENTAL

Montrose Environmental Group  
Date: 12/31/2025

Reviewed By: R. Bumgardner  
Author: D. Virilar-Knight

**Potential Release Locations (12/30/2025)**  
Weidenkeller 64N65W 1NWNW

Noble-100322  
NWNW/S1/T4N/R65W  
Weld County, Colorado

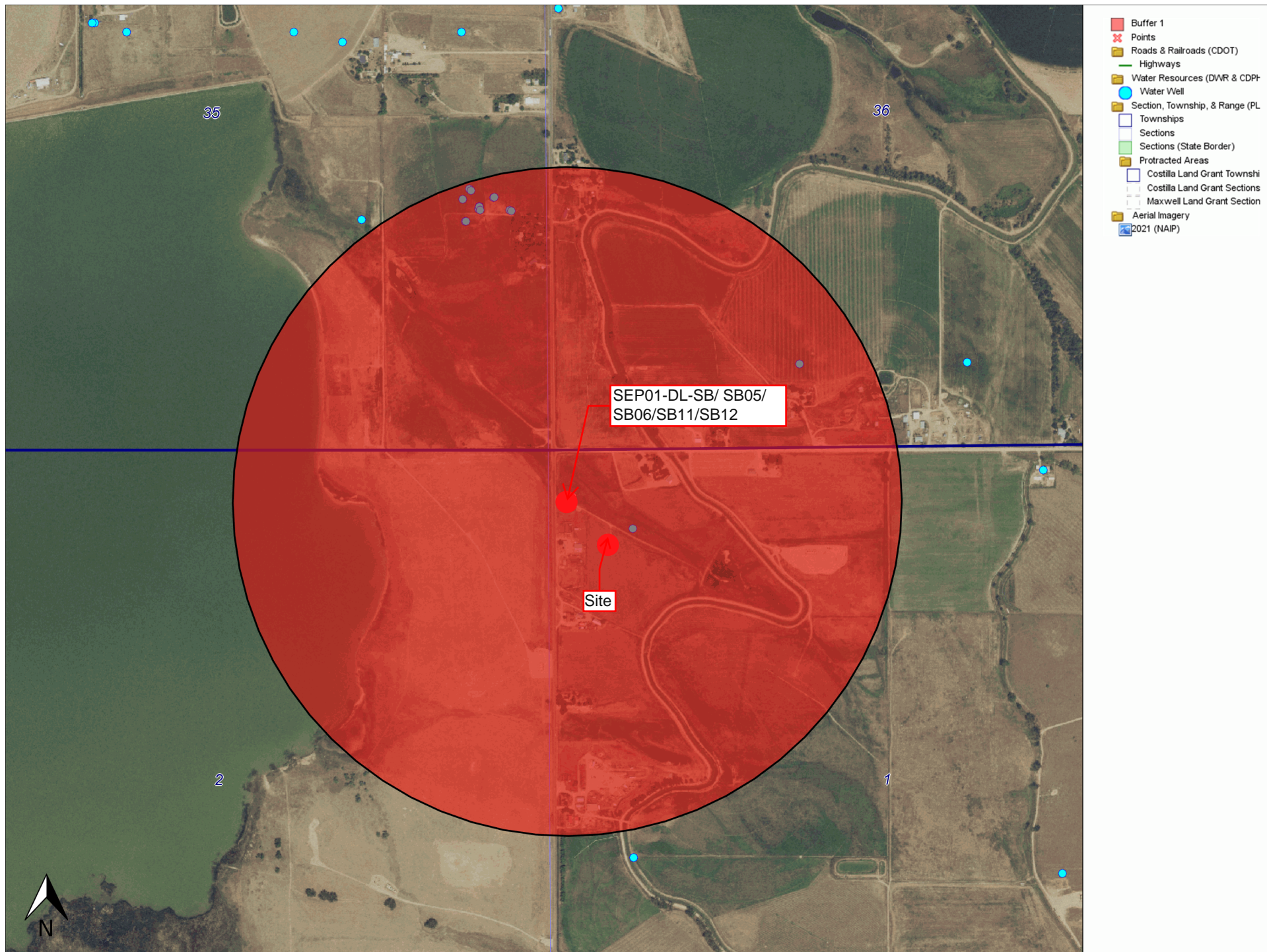
Facility Number: 328364  
REM Number: 34496  
API Number: N/A

Figure 2

0 34 67 130 200 Feet

Coord. Sys.: GCS North American 1983

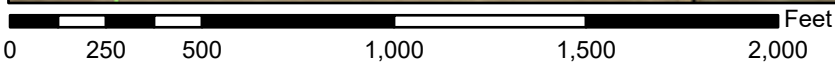
# DWR Weidenkeller 64N65W 1NWNW



# National Flood Hazard Layer FIRMMette



104°37'33"W 40°21'4"N



1:6,000

104°36'55"W 40°20'36"N

Basemap Imagery Source: USGS National Map 2023

## Legend

SEE FIS REPORT FOR DETAILED LEGEND AND INDEX MAP FOR FIRM PANEL LAYOUT

SPECIAL FLOOD HAZARD AREAS		Without Base Flood Elevation (BFE) <i>Zone A, V, A99</i>
		With BFE or Depth <i>Zone AE, AO, AH, VE, AR</i>
		Regulatory Floodway
OTHER AREAS OF FLOOD HAZARD		0.2% Annual Chance Flood Hazard, Areas of 1% annual chance flood with average depth less than one foot or with drainage areas of less than one square mile <i>Zone X</i>
		Future Conditions 1% Annual Chance Flood Hazard <i>Zone X</i>
		Area with Reduced Flood Risk due to Levee. See Notes. <i>Zone X</i>
		Area with Flood Risk due to Levee <i>Zone D</i>
OTHER AREAS		NO SCREEN Area of Minimal Flood Hazard <i>Zone X</i>
		Effective LOMRs
		Area of Undetermined Flood Hazard <i>Zone D</i>
GENERAL STRUCTURES		Channel, Culvert, or Storm Sewer
		Levee, Dike, or Floodwall
OTHER FEATURES		20.2 Cross Sections with 1% Annual Chance
		17.5 Water Surface Elevation
		Coastal Transect
		Base Flood Elevation Line (BFE)
		Limit of Study
		Jurisdiction Boundary
MAP PANELS		Digital Data Available
		No Digital Data Available
		Unmapped
		The pin displayed on the map is an approximate point selected by the user and does not represent an authoritative property location.

This map complies with FEMA's standards for the use of digital flood maps if it is not void as described below. The basemap shown complies with FEMA's basemap accuracy standards

The flood hazard information is derived directly from the authoritative NFHL web services provided by FEMA. This map was exported on **12/30/2025 at 9:10 PM** and does not reflect changes or amendments subsequent to this date and time. The NFHL and effective information may change or become superseded by new data over time.

This map image is void if the one or more of the following map elements do not appear: basemap imagery, flood zone labels, legend, scale bar, map creation date, community identifiers, FIRM panel number, and FIRM effective date. Map images for unmapped and unmodernized areas cannot be used for regulatory purposes.



<b>Client Name:</b> Chevron	<b>Project Name:</b> Weidenkeller 64N65W 1NWNW	<b>Project Location:</b> 40.346494, -104.619372	<b>REM Number:</b> 34496
--------------------------------	--	--	-----------------------------

<b>Photo:</b> 1	<b>Date:</b> 12/30/2025	<b>Description:</b> Representative picture of general conditions at soil sampling location SB05 (soil boring; 40.347316, -104.620498) in well graded sand (SW) at a depth of approximately three (3) feet below ground surface (bgs) (PID: 1,783 ppm). Soil staining and petroleum odors were observed.
--------------------	----------------------------	---



<b>Photo:</b> 2	<b>Date:</b> 12/30/2025	<b>Description:</b> Representative picture of general conditions at soil sampling location SB06 (40.347296, -104.620443) in well graded sand (SW) at a depth of approximately three (3) feet bgs (PID: 6.0 ppm). Soil staining and petroleum odors were observed.
--------------------	----------------------------	---

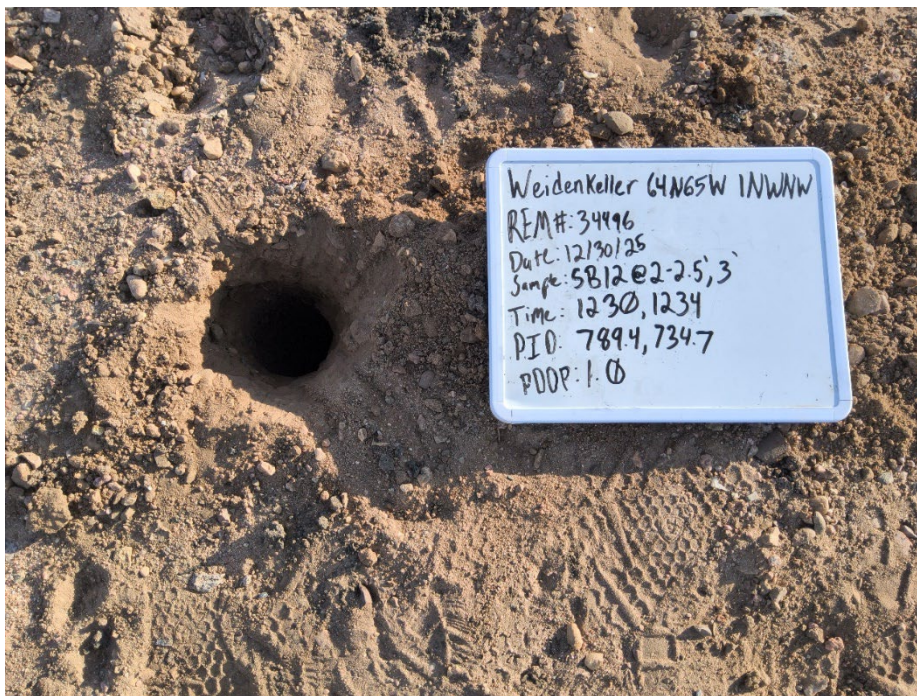


<b>Client Name:</b> Chevron	<b>Project Name:</b> Weidenkeller 64N65W 1NWNW	<b>Project Location:</b> 40.346494, -104.619372	<b>REM Number:</b> 34496
--------------------------------	---	--	-----------------------------

<b>Photo:</b> 3	<b>Date:</b> 12/30/2025	<b>Description:</b> Representative picture of general conditions at soil sampling location SB11 (40.347261, -104.620569) in well graded sand (SW) at a depth of approximately three (3) bgs (PID: 3.0 ppm). Soil staining observed.
--------------------	----------------------------	---



<b>Photo:</b> 4	<b>Date:</b> 12/30/2025	<b>Description:</b> Representative picture of general conditions at soil sampling location SB12 (40.347303, -104.620544) in well graded sand (SW) at a depth of approximately two (2) to 2.5 feet and three (3) feet bgs (PID: 789.4 and 734.7 ppm). Soil staining and petroleum odors were observed.
--------------------	----------------------------	---



<b>Client Name:</b> Chevron	<b>Project Name:</b> Weidenkeller 64N65W 1NWNW	<b>Project Location:</b> 40.346494, -104.619372	<b>REM Number:</b> 34496
--------------------------------	--	--	-----------------------------

<b>Photo:</b> 5	<b>Date:</b> 12/30/2025	<b>Description:</b> Representative picture of general conditions at soil sampling location SEP01-DL01-SB (40.347261, -104.620498) in well graded sand (SW) at a depth of approximately two (2) and four (4) feet bgs (PID: 186.2 and 2103 ppm). Soil staining and petroleum odors were observed.
--------------------	----------------------------	--



**TABLE 1**  
**FIELD DATA SUMMARY TABLE**  
**OPERATOR (NOBLE 100322)**  
**WEIDENKELLER 64N65W 1NWNW, WELD COUNTY, COLORADO**  
**REM # 34496**

Sample ID	Sample Date	Depth (ft)	GPS Data		PDOP Value	VOC Concentration (ppm)
			Latitude/Longitude			
SEP01-DL01-SB@2'	12/30/2025	2.0	40.347261	-104.620498	1.0	186.2
SEP01-DL01-SB@4'	12/30/2025	4.0	40.347261	-104.620498	1.0	2103.0
SB05@3'	12/30/2025	3.0	40.347316	-104.620498	1.0	1783.0
SB06@3'	12/30/2025	3.0	40.347296	-104.620443	1.0	6.0
SB07@3'	12/30/2025	3.0	40.347261	-104.620426	1.0	5.8
SB08@3'	12/30/2025	3.0	40.347226	-104.620443	1.0	0.4
SB09@3'	12/30/2025	3.0	40.347206	-104.620498	1.0	1.1
SB10@3'	12/30/2025	3.0	40.347226	-104.620553	1.0	103.5
SB11@3'	12/30/2025	3.0	40.347261	-104.620569	1.0	3.0
SB12@2-2.5'	12/30/2025	2.0-2.5	40.347303	-104.620544	1.0	789.4
SB12@3'	12/30/2025	3.0	40.347303	-104.620544	1.0	734.7

1. Global Positioning System (GPS) data is provided in decimal degrees using North American Datum (NAD) 83 UTMZone 13 North.

2. Volatile organic compound (VOC) concentrations are measured in the field using a photoionization detector (PID).

PDOP = Position Dilution of Precision

ppm = Parts per million

in. = Inches

ft. = Feet

bgs = Below ground surface