



**SECTOR CEMENT BOND  
GAMMA RAY  
CCL LOG**

Comp. OCCIDENTAL PETROLEUM CORP.  
Well FRENCH LAKE 4-63-36 1M  
Field WATTENBERG  
Co. WELD  
State CO

Company **OCCIDENTAL PETROLEUM CORP.**  
Well **FRENCH LAKE 4-63-36 1M**  
Field **WATTENBERG**  
County **WELD** State **CO**

Location: API #: 05-123-33137  
Permanent Datum SEC 36 TWP 4N RGE 63W  
Log Measured From  
Drilling Measured From  
Elevation Above Perm. Datum  
Other Services  
PERF  
K.B.  
D.F.  
G.L.

Date of Service	02-OCT-2025
Run Number	ONE
Depth Driller or PBTD	7293'
Depth Logger	1600'
Bottom Log Interval	1600'
Top Log Interval	SURFACE
Open Hole Size	7-7/8"
Type Fluid	H2O
Fluid Level	SURFACE
Fluid Density	8.3 LB/GAL
Max. Recorded Temperature	85 DEG
Max. Wellhead Pressure	ZERO
Wellhead Connection	5K
Estimated Cement Top	200'
Unit Number	L172458
Wireline Size	1/4"
Location	BRIGHTON
Recorded By	C. SHEPPARD
Witnessed By	J. CASTILLO
Surface Casing	Size 8-5/8" Wt 32# Top SURFACE Bottom 725'
Production Casing	Size 5-1/2" Wt 20# Top SURFACE Bottom 7293'
Liner Casing	
Tubing Record	

<<< Fold Here >>>

All interpretations are opinions based on inferences from electrical or other measurements and Ranger Energy Services cannot and does not guarantee the accuracy or correctness of any interpretation, and Ranger Energy Services will not be liable or responsible for any loss, costs, damages, or expenses incurred or sustained by anyone resulting from any interpretation made by any of our officers, agents or employees.

**Comments**

N/A DENOTES NOT AVAILABLE OR NON-APPLICABLE.  
LOG CORRELATED TO KB

ZERO PRESSURE APPLIED @ SURFACE

THANK YOU FOR USING RANGER ENERGY SERVICES!!

THANK YOU FOR USING RANGER ENERGY SERVICES! FIELD TICKET #

Your Ranger Energy Services Crew	Tool Data - Services	Serial Number
Engineer: C. SHEPPARD Operator: E. CARRANZA Operator: R. CINTORA Operator:		

Operator	Offset (ft)	Substrate	Description	Length (ft)	O.D. (in)	Weight (lb)
----------	-------------	-----------	-------------	-------------	-----------	-------------

Sensor	Offset (ft)	Schematic	Description	Length (ft)	O.D. (in)	Weight (lb)	
GCT_FMWR	15.69						
mSec_Count	15.69						
RBT_Status	15.69						
Error_Ct	15.69						
RBT_HV	15.69						
WVFS8	11.19			RBT8-RADII-275C (RBT275C_Base) Probe 2.75" RADII 8 Sector Bond Tool	8.75	2.75	
WVFS7	11.19						
WVFS6	11.19						
WVFS5	11.19						
WVFS4	11.19						
WVFS3	11.19						
WVFS2	11.19						
WVFS1	11.19						
WV3FT	11.19						
WV5FT	10.19						
RBT_ACCZ	6.94						
RBT_ACCY	6.94						
RBT_ACCX	6.94						
WVFSYNC	6.94						
WVFCAL	6.94						
GCT_HV	5.10						
CCL\$2	4.14						
CCL\$1	4.14						
GCT_Temp	3.59		GCacc-GCT275-0000 (GCT275-0000_base) Probe 2.75" Gamma Ray - CCL w/ Temp	6.61	2.75	65.00	
GR	2.72						
GCT_IntTemp	2.00						
			Plug-FA108-0000 1.38" Bull Plug	0.33	1.38	1.00	

Dataset: 1160734\_occidental\_frenchlake4-63-361m\_0512322505\_20251002\_scbl.db: field/well/run1/pass3  
 Total length: 15.69 ft  
 Total weight: 66.00 lb  
 O.D.: 2.75 in

# Log Variables

DatabaseC:\ProgramData\Warrior\Data\1160734\_occidental\_frenchlake4-63-361m\_0512322505\_2  
 Dataset field/well/run1/pass3/\_vars\_

## Top - Bottom

BOREID in 4.778	BOTTEMP degF 85	CASEOD in 5.5	CASETHCK in 0.361	CASEWGHT lb/ft 20	MAXAMPL mV 71.9	MINAMPL mV 2.2	MINATTN db/ft 9
PERFS No	PPT usec 261	SRFTEMP degF 48	TDEPTH ft 1600				

## Variable Description

BOREID : Borehole I.D.  
 BOTTEMP : Bottom Hole Temperature  
 CASEOD : Casing O.D.  
 CASETHCK : Casing Thickness

CASEWGHT : Casing Weight  
 MAXAMPL : Maximum Amplitude  
 MINAMPL : Minimum Amplitude  
 MINATTN : Minimum Attenuation

PERFS : Perforation Flag  
 PPT : Predicted Pipe Time  
 SRFTEMP : Surface Temperature  
 TDEPTH : Total Depth

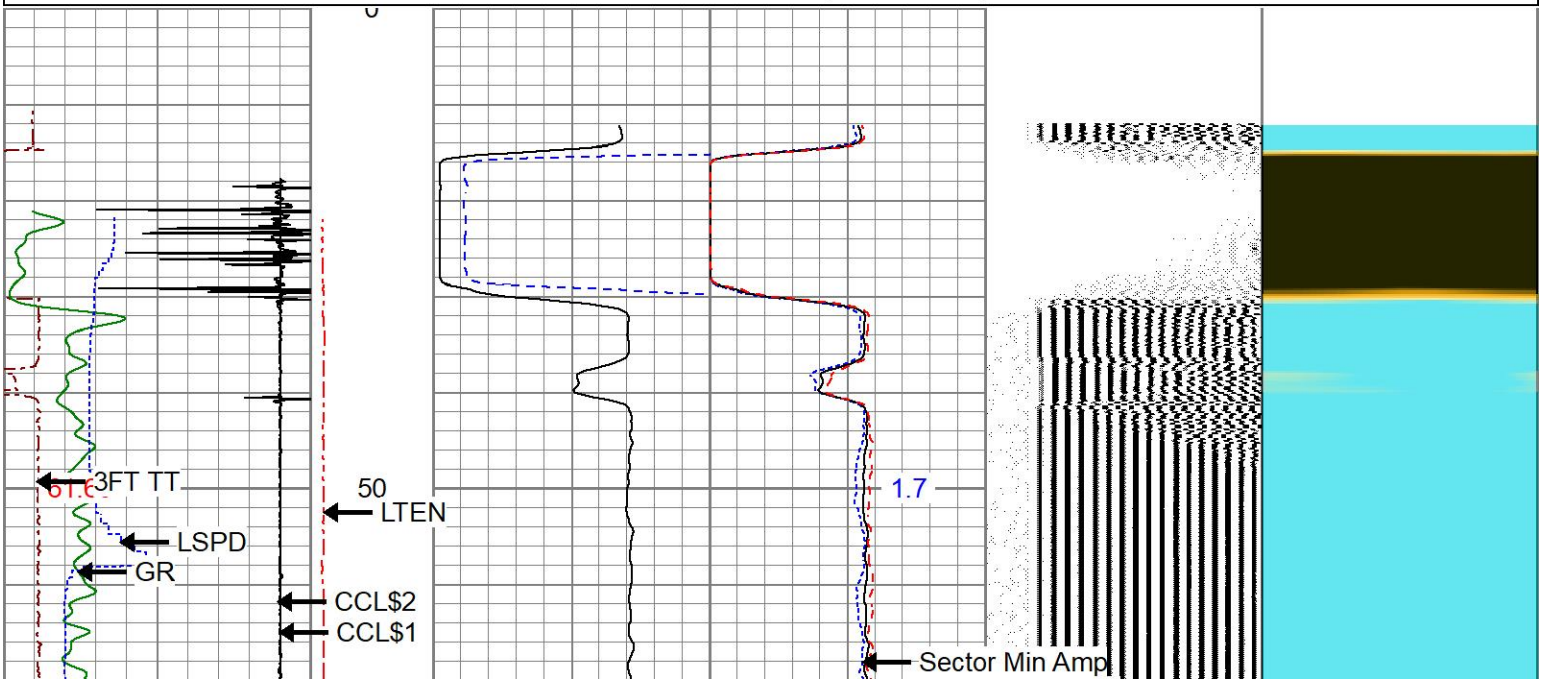


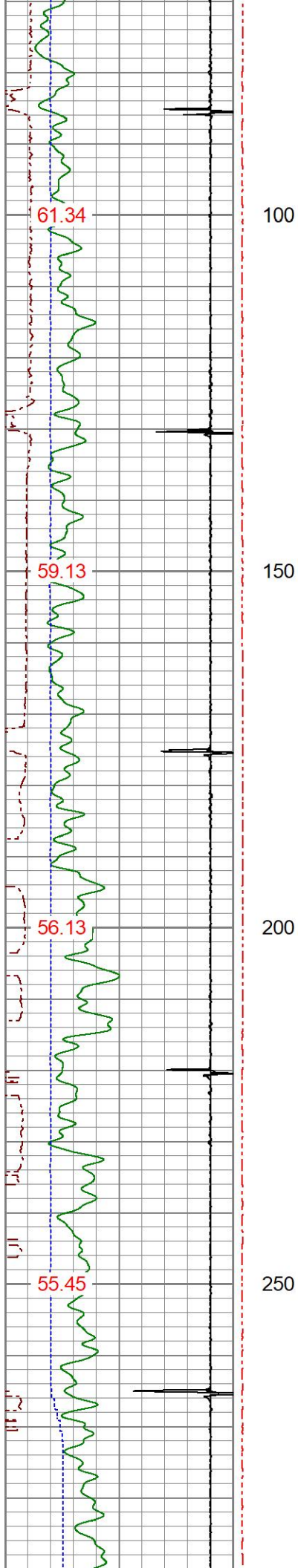
## MAIN PASS

0 PSI APPLIED AT SURFACE

Database File 1160734\_occidental\_frenchlake4-63-361m\_0512322505\_20251002\_scbl.db  
 Dataset Pathname merge1  
 Presentation Format res\_scbl 8sec-gr-ccl  
 Dataset Creation Thu Oct 02 08:36:22 2025  
 Charted by Depth in Feet scaled 1:240

290 3FT TT (usec) 190	LTEN	3' Amplitude	0 Sector Min Amp 150	200 VDL (usec) 1200	1 Sector Map 8
0 GR (GAPI) 150	(lb)	(mV) 100	Sector Avg Amp		
-150 LSPD (ft/min) 150	0 2000	3' Amplified Amplitude X 5	0 150		
-9 CCL\$1 1		(mV) 20	Sector Max Amp		
GCT_Temp (degF)			0 150		
			DEVIATION (deg)		



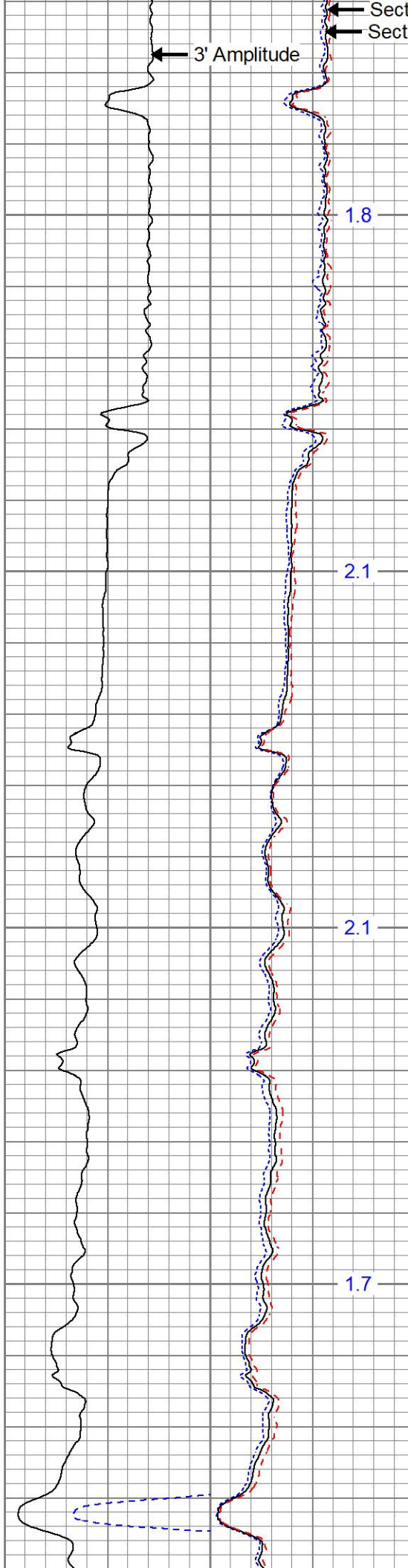


100

150

200

250



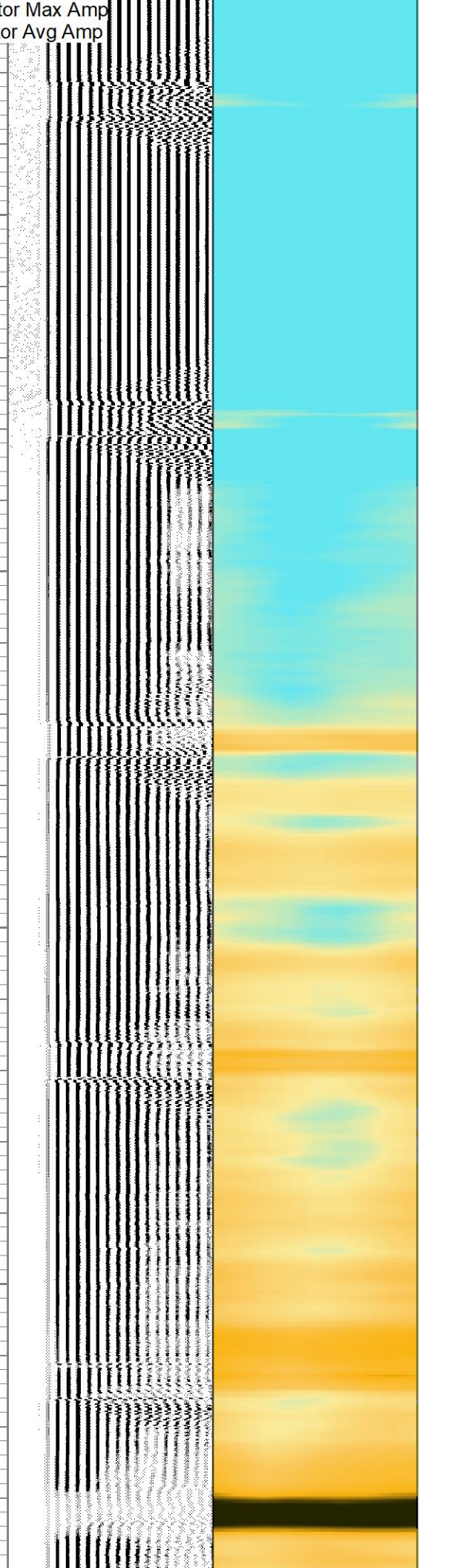
1.8

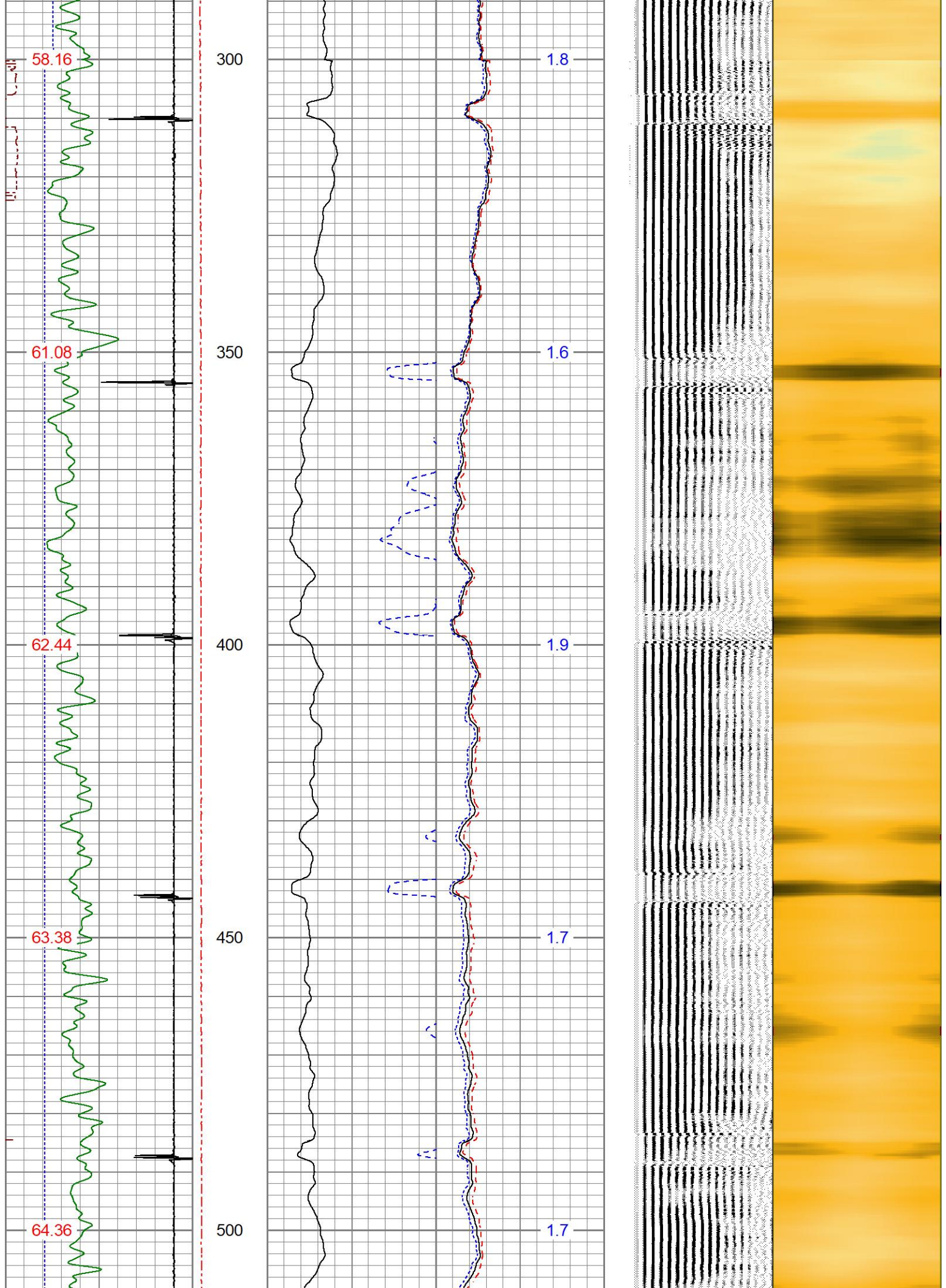
2.1

2.1

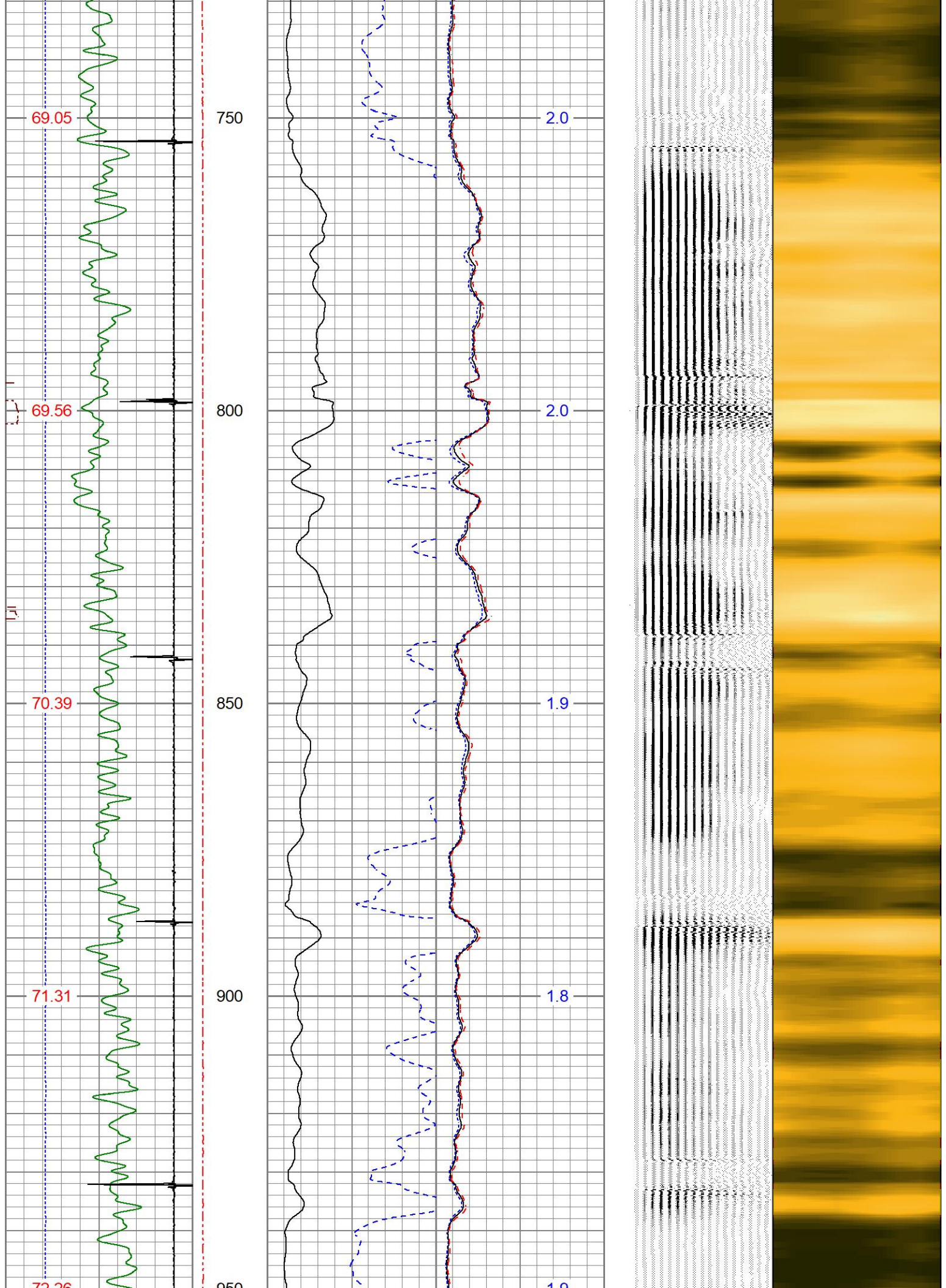
1.7

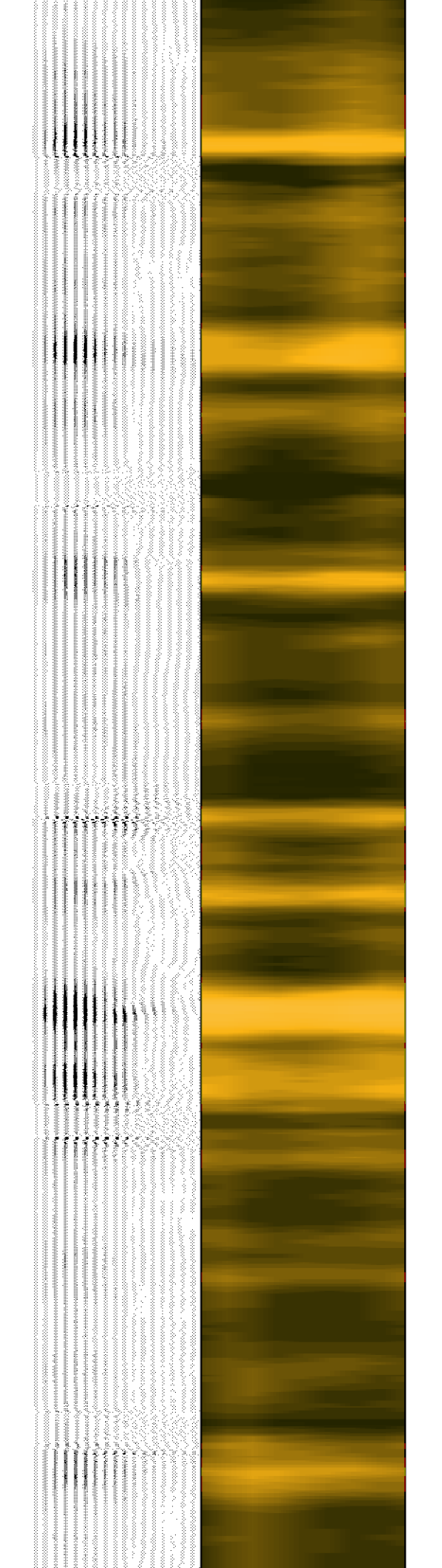
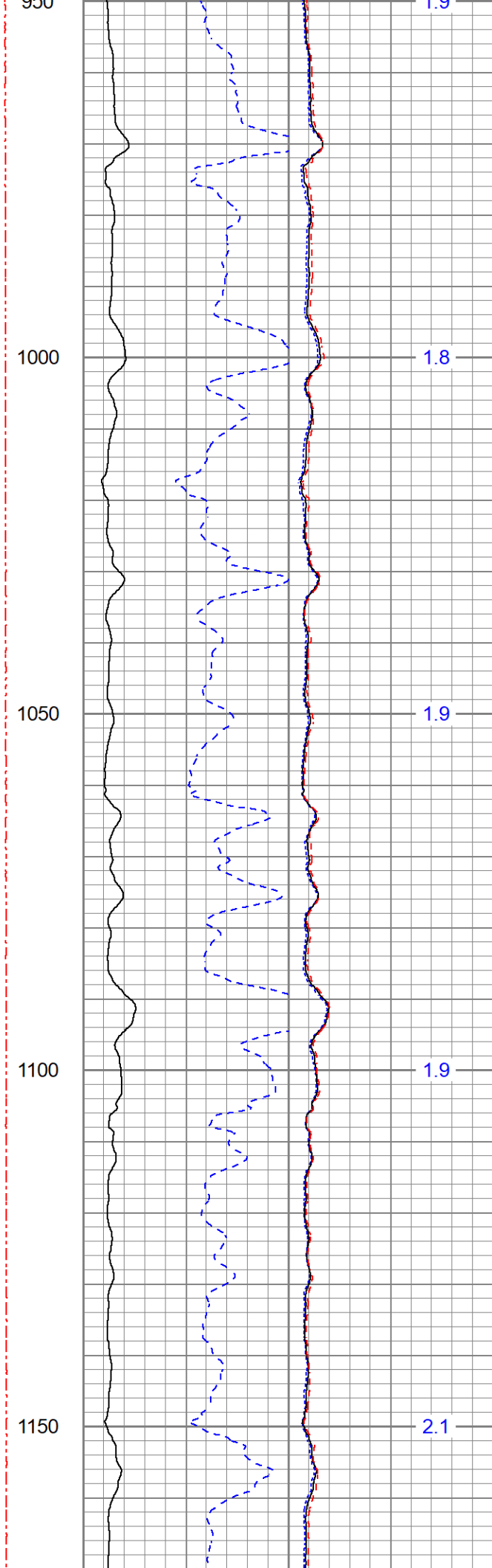
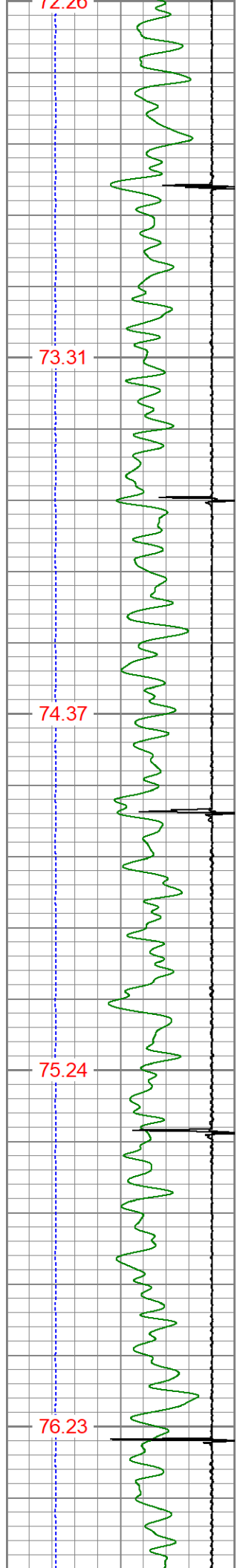
Sector Max Amp  
Sector Avg Amp











77.31

78.39

79.40

80.40

1200

1250

1300

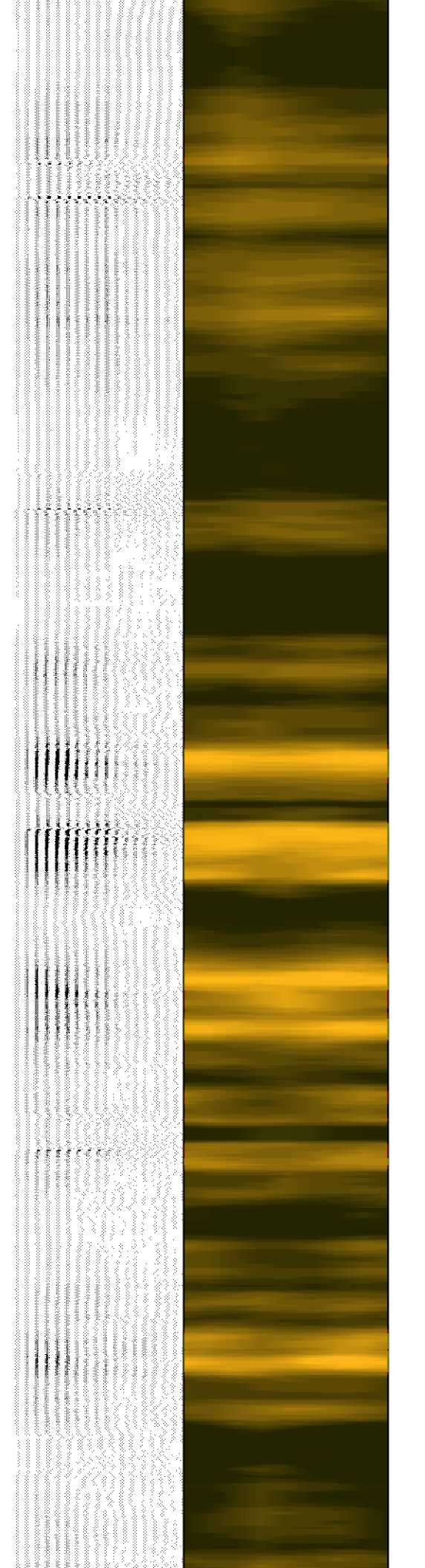
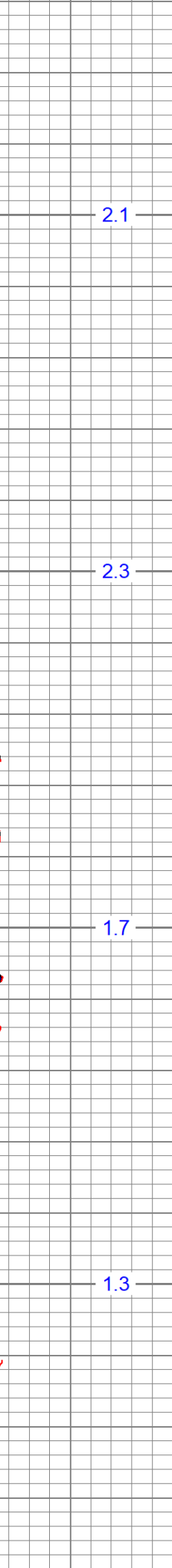
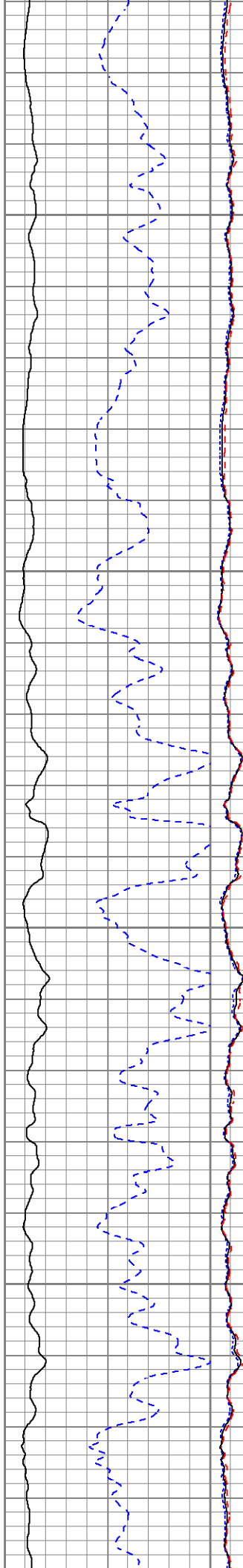
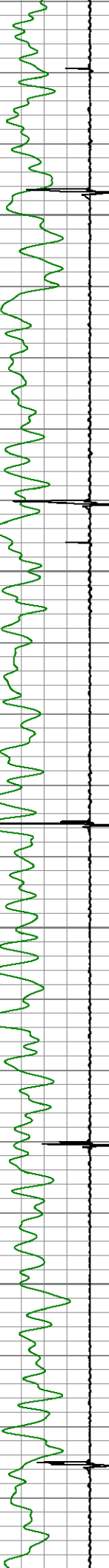
1350

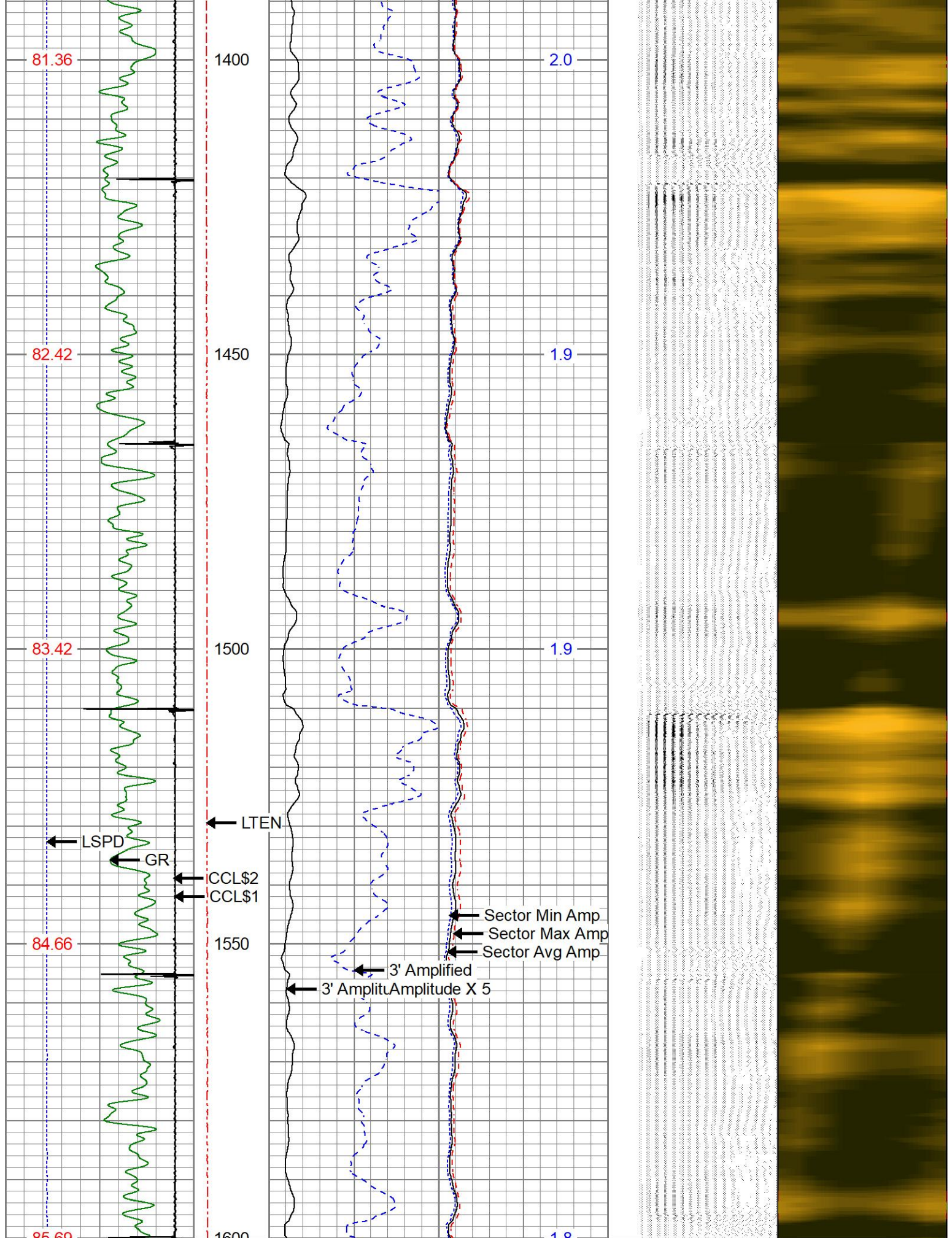
2.1

2.3

1.7

1.3





290	3FT TT (usec)	190	LTEN	3' Amplitude	0	Sector Min Amp	150	200	VDL (usec)	1200	1	Sector Map	8
0	GR (GAPI)	150	(lb)	(mV)	0	Sector Avg Amp	100						

-150 LSPD (ft/min)	150	0	2000	3' Amplified Amplitude X 5	0	150
-9 CCL\$1	1				Sector Max Amp	
GCT_Temp (degF)		0	20	(mV)	0	150
					DEVIATION (deg)	

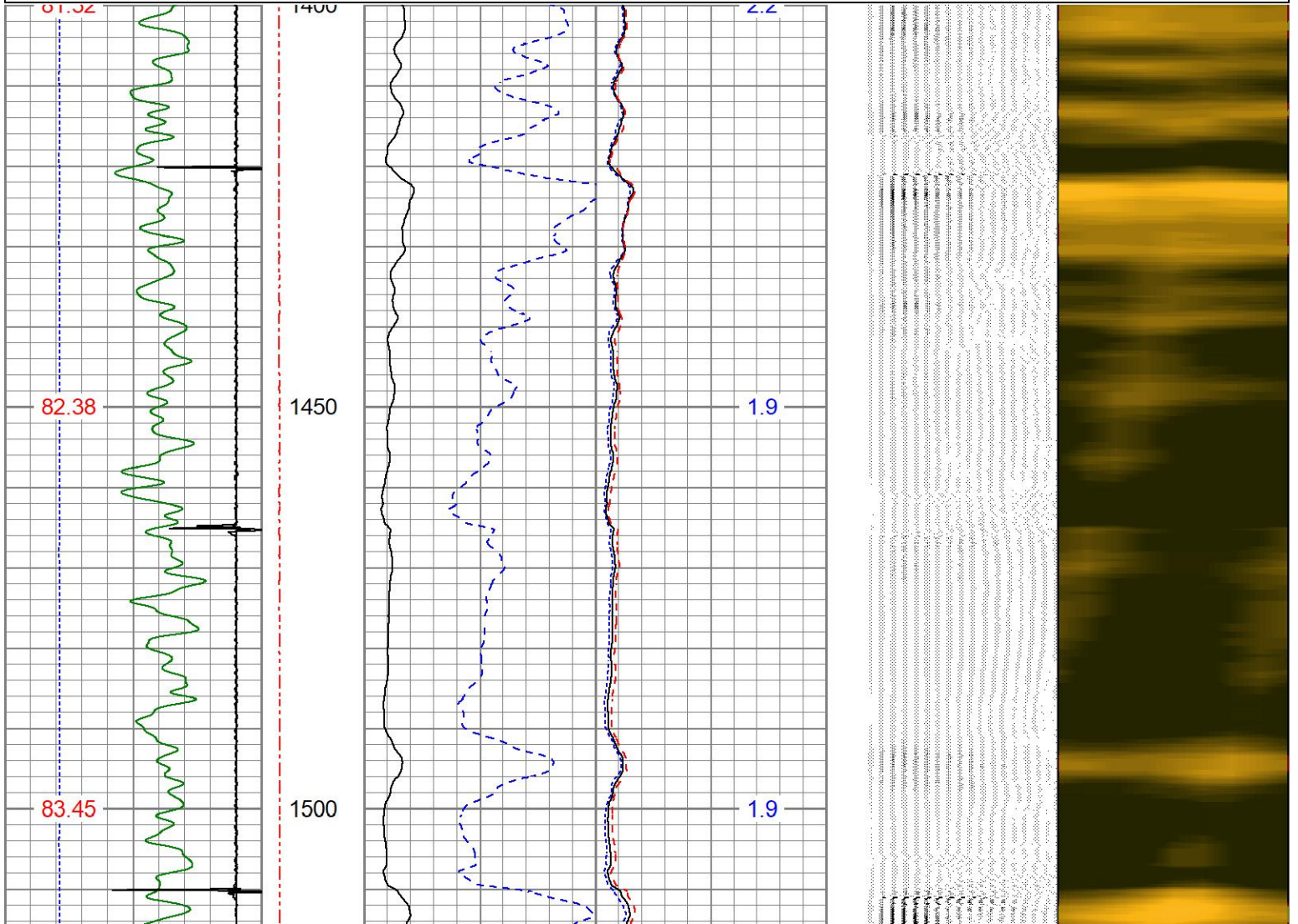


# REPEAT PASS

0 PSI APPLIED AT SURFACE

Database File 1160734\_occidental\_frenchlake4-63-361m\_0512322505\_20251002\_scbl.db  
 Dataset Pathname pass2  
 Presentation Format res\_scbl 8sec-gr-ccl  
 Dataset Creation Thu Oct 02 07:48:21 2025  
 Charted by Depth in Feet scaled 1:240

290 3FT TT (usec)	190	LTEN (lb)	0	2000	3' Amplitude (mV)	100	0	Sector Min Amp	150	200	VDL (usec)	1200	1	Sector Map	8
0 GR (GAPI)	150							Sector Avg Amp							
-150 LSPD (ft/min)	150				3' Amplified Amplitude X 5		0	Sector Max Amp							
-9 CCL\$1	1						0	Sector Max Amp							
GCT_Temp (degF)					(mV)	20	0	Sector Max Amp							
								DEVIATION (deg)							





	Raw (v)		Calibrated (mv)		Results	
	Zero	Cal	Zero	Cal	Gain	Offset
3'	0.008	1.022	2.200	71.900	68.741	1.624
CAL	0.008	1.013				
5'	0.008	0.991	2.200	71.900	70.929	1.603
SUM						
S1	0.008	1.025	0.000	100.000	98.353	-0.809
S2	0.007	1.019	0.000	100.000	98.856	-0.737
S3	0.008	1.046	0.000	100.000	96.383	-0.799
S4	0.008	1.038	0.000	100.000	97.052	-0.755
S5	0.007	1.034	0.000	100.000	97.393	-0.730
S6	0.008	1.031	0.000	100.000	97.808	-0.814
S7	0.008	1.034	0.000	100.000	97.479	-0.746
S8	0.008	1.039	0.000	100.000	96.995	-0.755

Internal Reference Calibration, performed (Not Performed):

	Raw (v)		Calibrated (v)		Results	
	Zero	Cal	Zero	Cal	Gain	Offset
CAL	0.000	0.000	0.008	1.013	1.000	0.000

Air Zero Calibration, performed Mon Oct 10 10:36:11 2022:

	Raw (v)		Calibrated (v)		Results	
	Zero		Zero		Offset	
3'	0.000		0.000			0.000
5'	0.000		0.000			0.000
SUM						
S1	0.000		0.000			0.000
S2	0.000		0.000			0.000
S3	0.000		0.000			0.000
S4	0.000		0.000			0.000
S5	0.000		0.000			0.000
S6	0.000		0.000			0.000
S7	0.000		0.000			0.000
S8	0.000		0.000			0.000

### Inclinometer Calibration Report

Performed:	Mon Jan 24 09:23:58 2022				
	Low Read.	High Read.	Low Ref.	High Ref.	
X Accelerometer	-918.00	908.00	-1.00	1.00	gee
Y Accelerometer	-941.00	887.00	-1.00	1.00	gee
Z Accelerometer	1.35	894.18	0.00	1.00	gee



Company  
Well  
Field

**OCCIDENTAL PETROLEUM CORP.**  
**FRENCH LAKE 4-63-36 1M**  
**WATTENBERG**  
WELD

County  
State

**WELD**  
**CO**