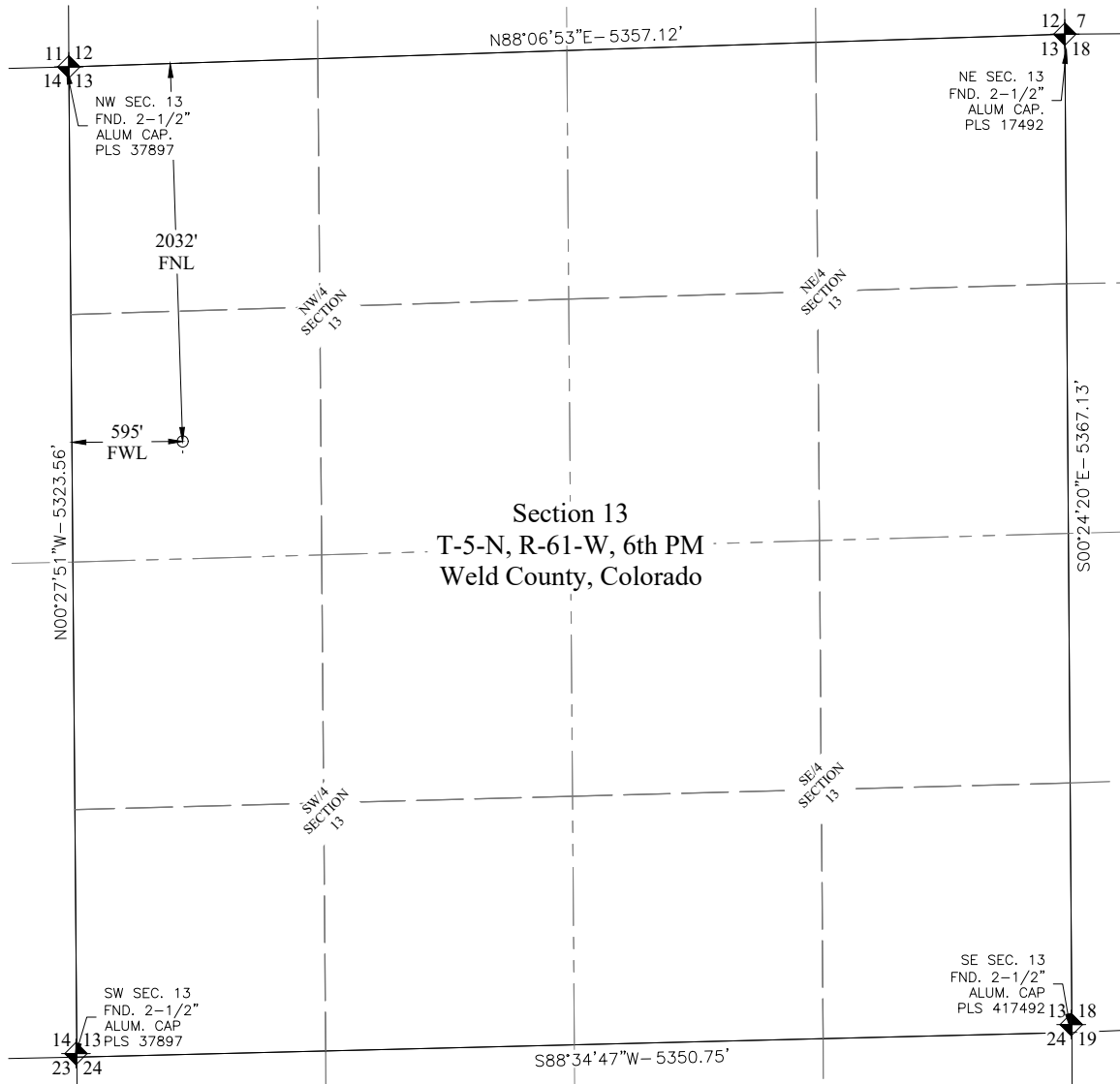


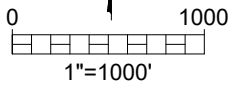
PLUGGED AND ABANDONED WELL EXHIBIT

FELTS 1 (API#05-123-11857)






Section 13
T-5-N, R-61-W, 6th PM
Weld County, Colorado

PDOP: 1.2
INSTRUMENT OPERATOR: NATHAN NASIF
LANDMAN: CORY NEIGHBORS
SURFACE USE: RANGELAND



LEGEND

-  - ALIQUOT MONUMENT AS DESCRIBED
-  - CALCULATED POSITION
-  - ABANDONED WELL

I, STANLEY W. DRANNON, a Licensed Land Surveyor in the State of Colorado, do hereby certify that this Exhibit is a true and correct representation of a survey made on the ground under my direct supervision and all facts are as shown herein.



Stanley Drannon
Registered Professional Land Surveyor
Colorado Registration No. 38543



Avery Land Services LLC
1321 W. Main St. #522 Sterling, CO 80751

FELTS 1 (API#05-123-11857)				
SHL (GROUND EL. 4658')				
SHL FOOTAGE	SEC 1/4-1/4	LAT°	LONG°	
2032' FNL	595' FWL	13 SW-NW	40.40305900	-104.16391034

DESCRIPTION: FOUND CAPPED WELL IN BELL HOLE

NOTES:

1. COORDINATES, BEARINGS, AND DISTANCES SHOWN ARE LAMBERT GRID AND CONFORM TO THE COLORADO STATE PLANE COORDINATE SYSTEM, "NORTH ZONE", NORTH AMERICAN DATUM 1983, U.S. SURVEY FOOT
2. DISTANCES TO SECTION LINES ARE MEASURED AT 90 DEGREES FROM SAID SECTION LINES.
3. GROUND ELEVATIONS ARE BASED ON AN OBSERVED GPS ELEVATION (NAVD 1988 DATUM)
4. THIS EXHIBIT WAS PREPARED WITHOUT THE BENEFIT OF A TITLE COMMITMENT. ONLY ABOVE GROUND SURFACE FEATURES WERE LOCATED AS A PART OF THIS SURVEY.
5. THIS MAP DOES NOT REPRESENT A BOUNDARY SURVEY.

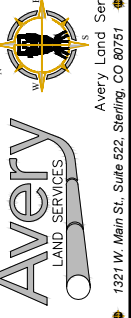
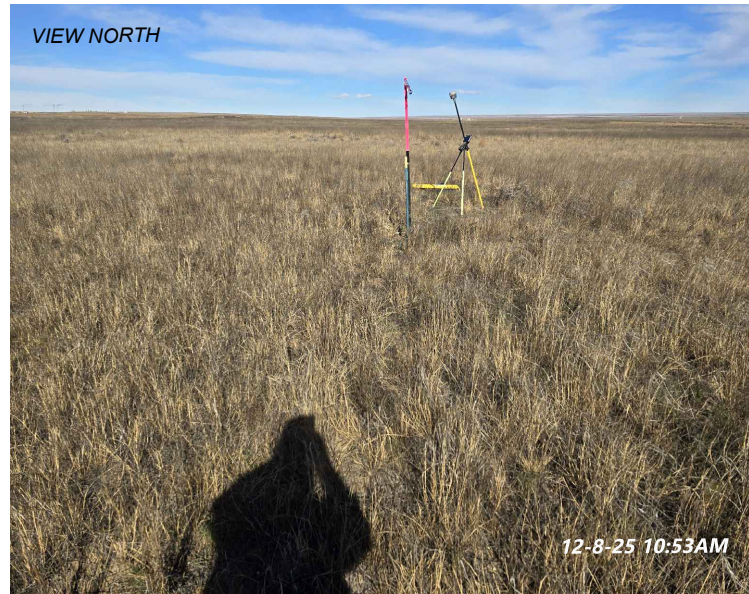


SECTION 13 T-5-N, R-61-W, 6th PM
WELD COUNTY, COLORADO

Survey Date: 12/08/25	Drawn By: EBM	Chk'd By: SWD
Date: December 30, 2025	SCALE: 1"=1000'	SHEET 1 OF 1

REFERENCE AREA PICTURES

FELTS 1 (API#05-123-11857)
BISON IV OPERATING, LLC



Avery Land Services
1321 W. Main St., Suite 522, Sterling, CO 80751

REFERENCE AREA PICTURES

FELTS 1 (API#05-123-11857)
LOCATION DESCRIPTION:
SW 1/4 OF NW 1/4 OF
SECTION 13 T-5-N, R-61-W, 6th P.M.
WELD COUNTY, COLORADO

Revision	Date	Description

Field Date: 12/08/25

Drawing Date: 12/30/25

Drawn By: EBM

Sheet Number: